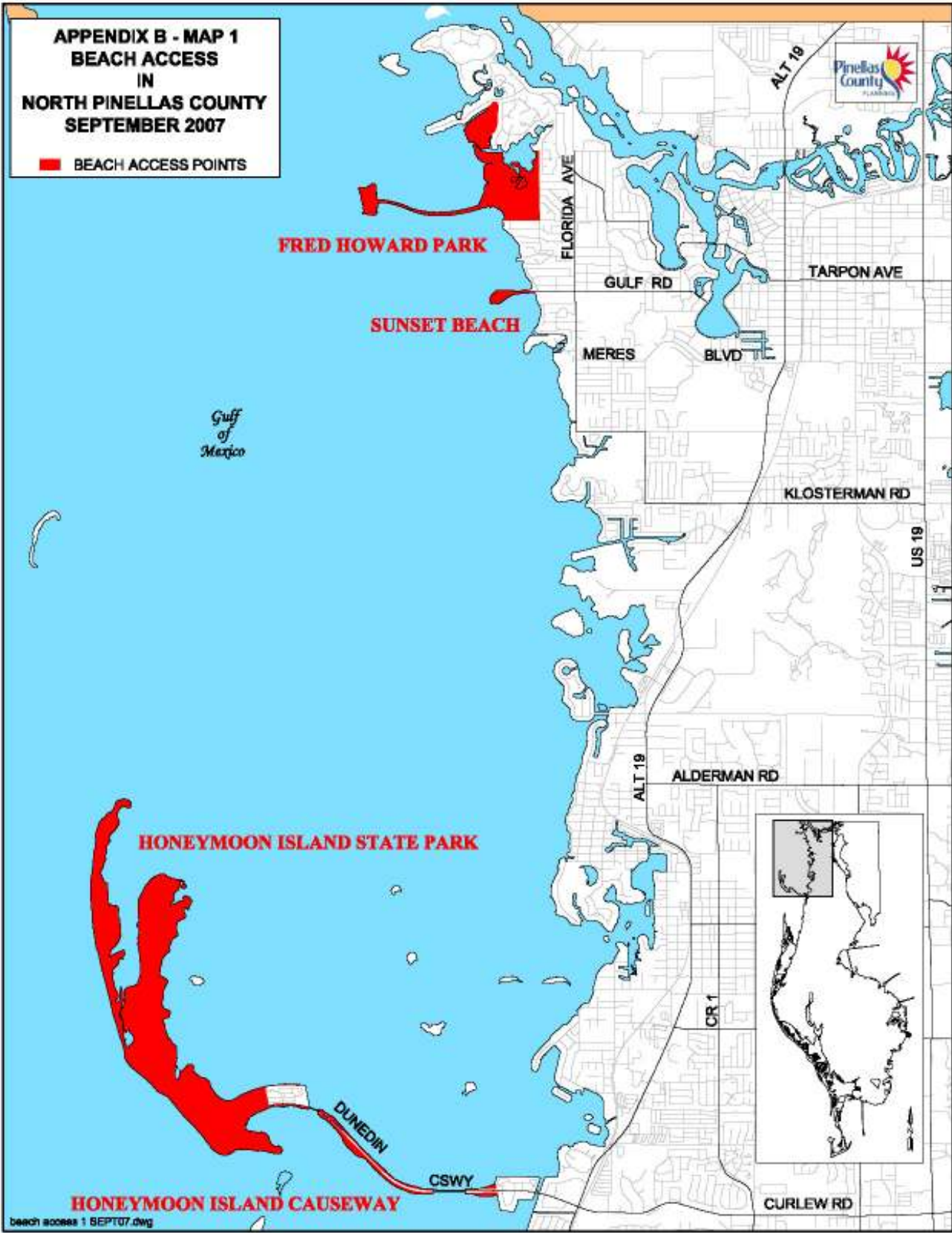


Appendix B

Beach Access in Pinellas County Map Series and Inventory



**APPENDIX B - MAP 2
BEACH ACCESS
IN
PINELLAS COUNTY
NORTH BEACHES
SEPTEMBER 2007**

 **BEACH ACCESS POINTS**



- JUNIPER STREET
- LAUREL STREET
- GARDENIA STREET
- BOHENIA CIRCLE N
- MANGO STREET
- BOHENIA CIRCLE S
- ASTER STREET
- SOMERSET STREET
- CAMBRIA STREET
- IDLEWILD STREET
- GLENDALE STREET
- HEILWOOD STREET
- AVALON STREET
- KENDALL STREET
- NORTH BEACH PARK
- BAYMONT STREET
- SAN MARCO STREET
- PAPAYA STREET

SOUTH BEACH PARK

SAND KEY PARK

1200 GULF BLVD

**1290 GULF BLVD
1340 GULF BLVD**

1480 GULF BLVD

**1560 GULF BLVD
1590 GULF BLVD**

3500 GULF BLVD

**2940 GULF BLVD
MORGAN DRIVE**

25th STREET

21st STREET

19th STREET

12th STREET

**6th STREET
28th AVENUE**

Gulf of Mexico

MEMORIAL CSWY

SUNSET POINT RD

DREW ST

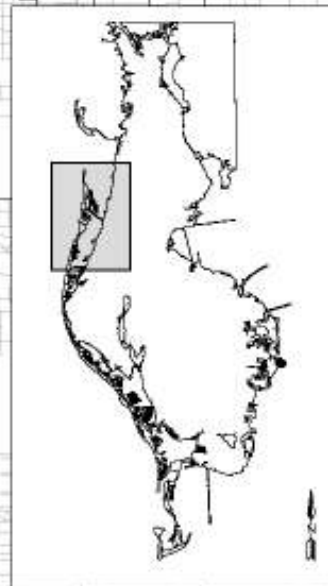
FT HARRISON AVE

MYRTLE AVE

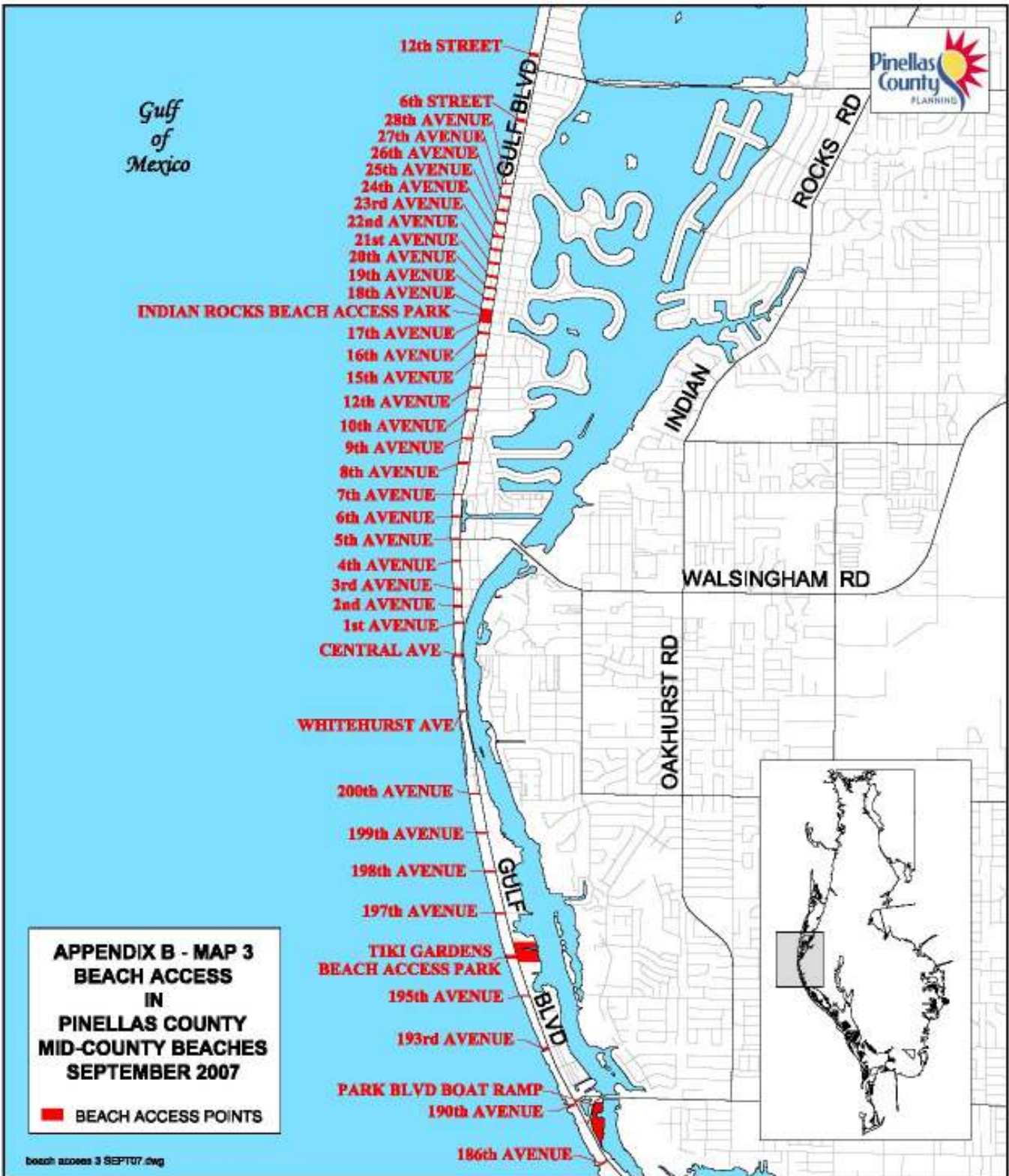
INDIAN ROCKS RD

HIGHLAND AVE

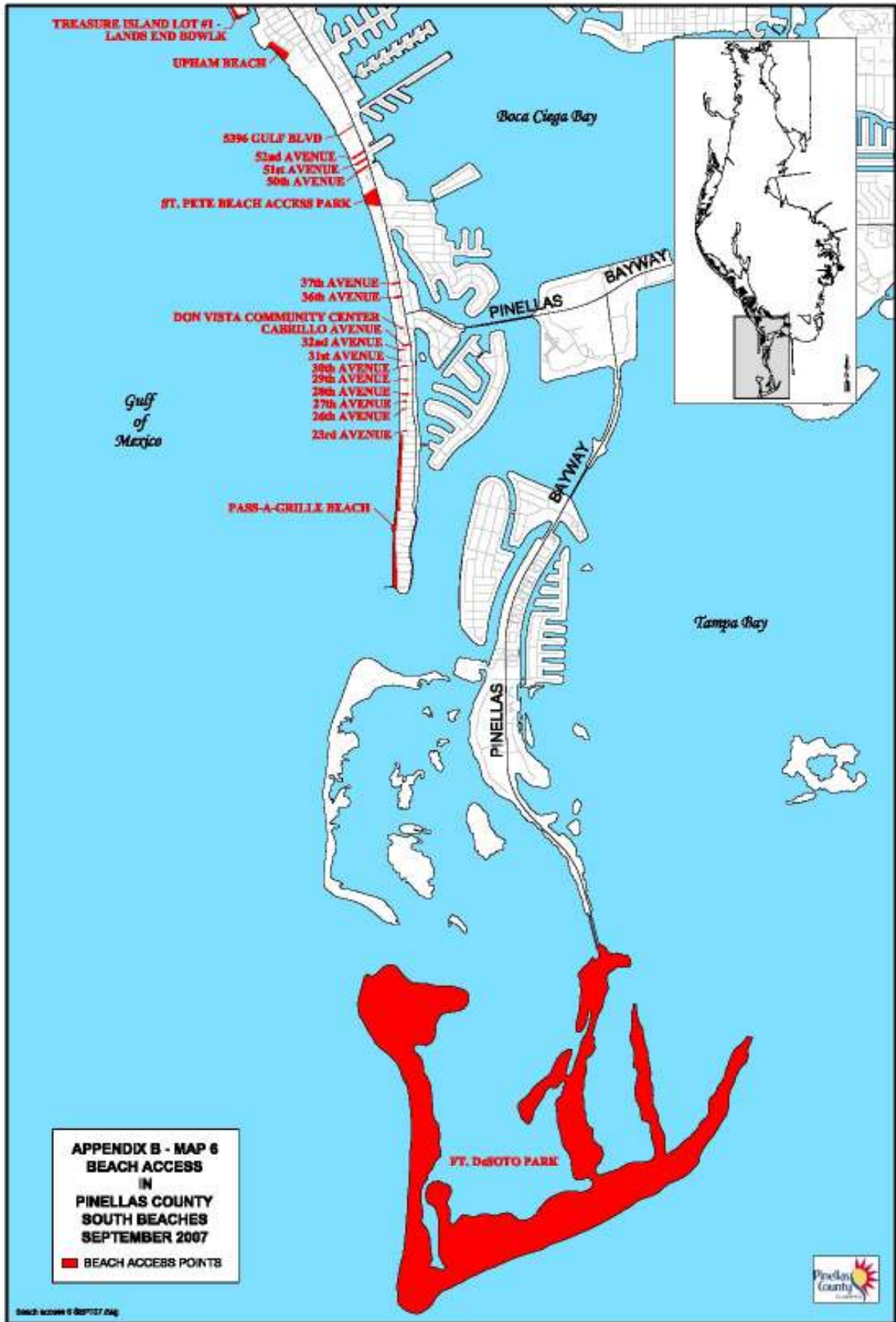
WEST BAY DR



beach access 2 SEPT07.dwg







APPENDIX B: INVENTORY OF BEACH ACCESS IN PINELLAS COUNTY

							Public Facilities						
Public Access Facility	Address & Jurisdiction	Acreage	Beach Front (Feet)	Boat Ramps	Fishing Piers	Other uses	Rest Rooms	Showers	Changing Facilities	Food Concessions	Off-site Parking	Parking Spaces	
State Recreation Area	Anclote Key Recreation Area, Tarpon Springs	35.00	3000									Boat Access Only	
County Park	Fred Howard Park & Cswy, Tarpon Springs	155.00	1,000		10,150' Causeway	x	x	x			100 approx. unpaved on causeway	784 paved (Park)	
City Park	Sunset Beach, Tarpon Springs	8.60	1,400	1 lane		2,400' Scenic Walk	x					70 paved	
Sate Recreation Area	Honeymoon Island, Dunedin	407.70	26,400			(4)	x	x	x	x		1,005 paved Approx. 3,000 unpaved	
State Park	Caladesi Island, Dunedin	630.70	13,600			(4)	x		x	x		Ferry and Boat Access Only	
Causeway	Dunedin Causeway, Dunedin	36.00	10,000	(3)								Free unpaved parking on Causeway, approx. 200	
Street End	Juniper St. , Clearwater	0.14	60										
Street End	Laurel St. , Clearwater	0.14	55										
Street End	Gardenia St. , Clearwater	0.14	60			(4)							
Street End	Bohemia Cir., Clearwater	0.14	60			(4)							
Street End	Mango St. , Clearwater	0.14	60			(4)							
Street End	Aster St. , Clearwater	0.12	60										

APPENDIX B: INVENTORY OF BEACH ACCESS IN PINELLAS COUNTY

							Public Facilities					
Public Access Facility	Address & Jurisdiction	Acreage	Beach Front (Feet)	Boat Ramps	Fishing Piers	Other uses	Rest Rooms	Showers	Changing Facilities	Food Concessions	Off-site Parking	Parking Spaces
Street End	Somerset St. , Clearwater	0.12	40									2 spaces & parking along Mandalay Blvd.
Street End	Cambria St. , Clearwater	0.12	40									8 spaces & parking along Mandalay Blvd.
Street End	Idlewild St. , Clearwater	0.12	40									Free Parking along Mandalay Blvd.
Street End	Glendale St. , Clearwater	0.12	40									Free Parking along Mandalay Blvd.
Street End	Heilwood St. , Clearwater	0.12	40									Free Parking along Mandalay Blvd.
Street End	Avalon St. Clearwater	0.30	40					x			(2)	56 Metered parking along Avalon St.
Street End	Kendall St. , Clearwater	0.54	40					x				To Kendall St.

APPENDIX B: INVENTORY OF BEACH ACCESS IN PINELLAS COUNTY

							Public Facilities					
Public Access Facility	Address & Jurisdiction	Acreage	Beach Front (Feet)	Boat Ramps	Fishing Piers	Other uses	Rest Rooms	Showers	Changing Facilities	Food Concessions	Off-site Parking	Parking Spaces
Street End	City of Clearwater Park, Clearwater	4.54	521				x	x	x		(2)	190 paved metered between Clearwater St. & Rockaway St.
Street End	Ambler St. , Clearwater	0.12	10								(2)	Access only - parking available 200' to North
Street End	Baymont St. , Clearwater		50									Free Parking along Mandalay Blvd.
Street End	Mangrove St. , Clearwater		50									None
Street End	Papaya St. , Clearwater		50									Free Parking along Mandalay Blvd.
City Park	Clearwater Municipal Beach, Clearwater	35.60	3100		600'		x	x	x	x	Marina 246 Civic Ctr. 62	843 paved & metered
County Park	Sand Key County Park, Clearwater	95.00	2100			(4)	x	x	x			674 paved & metered
Pedestrian Access	1310 Gulf Blvd., Clearwater	0.02	5									
Pedestrian Access	1370 Gulf Blvd., Clearwater	0.02	5									Restaurant owner allows parking

APPENDIX B: INVENTORY OF BEACH ACCESS IN PINELLAS COUNTY

							Public Facilities						
Public Access Facility	Address & Jurisdiction	Acreeage	Beach Front (Feet)	Boat Ramps	Fishing Piers	Other uses	Rest Rooms	Showers	Changing Facilities	Food Concessions	Off-site Parking	Parking Spaces	
Pedestrian Access	1582 Gulf Blvd., Clearwater	0.02	5								70 spaces (bay side)		
Causeway	East-end of south side of Courtney Campbell Causeway, Clearwater		4,500	(3)								Approx. 225 unpaved	
Mini-Park	Morgan Drive, Belleair Beach	1.65	75									10 public, 10 permit only	
Mini-Park PRIVATE (deed restricted residents only)	19th St., Belleair Shore	0.40	85					x				20 paved - permit only	
Mini-Park PRIVATE (deed restricted residents only)	12th St., Belleair Shore	0.40	80					x				20 paved - permit only	
Mini-Park PRIVATE (deed restricted residents only)	6th St., Belleair Shore	0.34	80			(4)		X				20 paved - permit only	
Pedestrian Access	28th Ave. , Indian Rocks Beach	0.12	20			(4)							
Street End	27th Ave. , Indian Rocks Beach	0.12	50			(4)						4 public, 2 permit only	
Street End	26th Ave. , Indian Rocks Beach	0.12	50			(4)						13 public, 2 permit only	
Street End	25th Ave. , Indian Rocks Beach	0.12	50			(4)						14 public, 2 permit only	
Street End	24th Ave. , Indian Rocks Beach	0.12	50			(4)						13 public, 1 permit only	
Street End	23rd Ave. , Indian Rocks Beach	0.12	50			(4)						15 public, 2 permit only, 1 handicap	

APPENDIX B: INVENTORY OF BEACH ACCESS IN PINELLAS COUNTY

							Public Facilities					
Public Access Facility	Address & Jurisdiction	Acreeage	Beach Front (Feet)	Boat Ramps	Fishing Piers	Other uses	Rest Rooms	Showers	Changing Facilities	Food Concessions	Off-site Parking	Parking Spaces
Street End	22nd Ave. , Indian Rocks Beach	0.12	50			(4)						7 public, 2 permit only
Street End	21st Ave. , Indian Rocks Beach	0.12	50			(4)						8 public, 2 permit only
Street End	20th Ave. , Indian Rocks Beach	0.12	50			(4)						6 public, 2 permit only
Street End	19th Ave. , Indian Rocks Beach	0.12	50			(4)						8 public, 2 permit only
Street End	18th Ave. , Indian Rocks Beach	0.12	50			(4)						
County Park	18th Ave. , Indian Rocks Beach	0.12	250			(4)	x	x				79 paved
Street End	17th Ave. , Indian Rocks Beach	0.12	50			(4)						
Street End	16th Ave. , Indian Rocks Beach	0.12	50			(4)						13 public, 2 permit only
Street End	15th Ave. , Indian Rocks Beach	0.12	50			(4)						13 public, 2 permit only
Street End	12th Ave. , Indian Rocks Beach	0.12	50			(4)						15 public, 2 permit only, 1 handicap
Pedestrian Access	10th Ave. , Indian Rocks Beach	0.12	25			(4)						
Pedestrian Access	9th Ave. , Indian Rocks Beach	0.12	30			(4)						
Street End	8th Ave. , Indian Rocks Beach	0.12	50			(4)						10 public, 2 permit only, 1 handicap
Pedestrian Access	7th Ave. , Indian Rocks Beach	0.12	40			(4)						
Street End	6th Ave. , Indian Rocks Beach	0.12	40			(4)						9 public, 2 permit only
Pedestrian Access	5th Ave. , Indian Rocks Beach	0.12	40			(4)						

APPENDIX B: INVENTORY OF BEACH ACCESS IN PINELLAS COUNTY

							Public Facilities					
Public Access Facility	Address & Jurisdiction	Acreage	Beach Front (Feet)	Boat Ramps	Fishing Piers	Other uses	Rest Rooms	Showers	Changing Facilities	Food Concessions	Off-site Parking	Parking Spaces
Street End	3rd Ave. , Indian Rocks Beach	0.12	30			(4)						9 public, 2 permit only
Street End	2nd Ave. , Indian Rocks Beach	0.12	50			(4)						9 public, 2 permit only
Street End	1st Ave. , Indian Rocks Beach	0.12	60			(4)						11 public, 2 permit only, 1 handicap
Street End	Central Ave. , Indian Rocks Beach	0.14	50									4 public, 2 permit only
Causeway	Belleair Causeway, Belleair Beach		3,600	(3)								Unpaved along Causeway approx. 125
Street End	Whitehurst Ave/1st Lane, Indian Shores/Indian Rocks Beach	0.12	50			(4)						
Street End (Street does not exist by court order) ⁵	202nd Ave. , Indian Shores	0.09	25									None
Pedestrian Access	200th Ave. , Indian Shores	0.05	25									
Street End	199th Ave. , Indian Shores	0.08	45			(3)						
Street End	198th Ave. , Indian Shores	0.08	45			(3)						
Street End	197th Ave. , Indian Shores	0.08	45			(4)						Parking on 197th Ave. east of Gulf Blvd.
Street End	196th Ave. , Indian Shores	0.12	45									

APPENDIX B: INVENTORY OF BEACH ACCESS IN PINELLAS COUNTY

							Public Facilities					
Public Access Facility	Address & Jurisdiction	Acreeage	Beach Front (Feet)	Boat Ramps	Fishing Piers	Other uses	Rest Rooms	Showers	Changing Facilities	Food Concessions	Off-site Parking	Parking Spaces
County Park (Tiki Gardens)	196th Ave. , Indian Shores	0.12	50			(4)	x	x				170 paved, 5 handicap - \$1/hr.
Pedestrian Access	195th Ave. , Indian Shores	0.02	20									
Street End	193rd Ave. , Indian Shores	0.11	70			(4)						100 paved (Town Hall)
Street End	190th Ave. , Indian Shores	0.11	60			(4)						Approx. 10 spaces
Street End	186th Ave. , Indian Shores	0.09	45			(3)						10 spaces east side of Gulf Blvd.
Pedestrian Access	183rd Terrace W, Redington Shores	0.01	5									Wheelchair Ramp
Pedestrian Access	183rd Ave. W, Redington Shores	0.08	10									Wheelchair Ramp
County Park	Redington Shores County Park, Redington Shores	3.50	350			(4)	x	x				170 paved
Pedestrian Access	Coral & Lee Ave. W, Redington Shores	0.23	10									Wheelchair Ramp
Pedestrian Access	Beach & Lee Ave. W, Redington Shores	0.03	10									
Pedestrian Access	Atoll & Lee Ave. W, Redington Shores	0.03	10									
Pedestrian Access	178th & Lee Ave. W, Redington Shores	0.03	10									
Pedestrian Access	177th Terr. & Lee Ave. W, Redington Shores	0.03	10									Wheelchair Ramp

APPENDIX B: INVENTORY OF BEACH ACCESS IN PINELLAS COUNTY

							Public Facilities					
Public Access Facility	Address & Jurisdiction	Acreage	Beach Front (Feet)	Boat Ramps	Fishing Piers	Other uses	Rest Rooms	Showers	Changing Facilities	Food Concessions	Off-site Parking	Parking Spaces
Pedestrian Access	176th Terr. & Lee Ave. W, Redington Shores	0.30	10									
Pedestrian Access	176th & Lee Ave. W, Redington Shores	0.02	10									
Pedestrian Access	174th Terr. & Lee Ave. W, Redington Shores	0.02	3									
Pedestrian Access	173rd & Lee Ave. W, Redington Shores	0.03	5									4 free spaces on Gulf Blvd
Pedestrian Access	17140 Gulf Blvd. N., Redington Beach	0.06	8									4 free spaces on Gulf Blvd
Pedestrian Access	17100 Gulf Blvd. N., Redington Beach	0.34	10									4 free spaces on Gulf Blvd
Pedestrian Access	17006 Gulf Blvd. N., Redington Beach	0.05	5									4 free spaces on Gulf Blvd
Pedestrian Access	170th Ave. W, North Redington Beach	0.02	5									4 free spaces on Gulf Blvd
Pedestrian Access	16830 Gulf Blvd., North Redington Beach	0.06	3									Free limited parking on Gulf Blvd.
Pedestrian Access PRIVATE (deed restricted residents only) ⁵	163rd Ave. , Redington Beach	0.12	10									
Pedestrian Access PRIVATE (deed restricted residents only) ⁵	162nd Ave. , Redington Beach	0.12	10									

APPENDIX B: INVENTORY OF BEACH ACCESS IN PINELLAS COUNTY

							Public Facilities						
Public Access Facility	Address & Jurisdiction	Acreage	Beach Front (Feet)	Boat Ramps	Fishing Piers	Other uses	Rest Rooms	Showers	Changing Facilities	Food Concessions	Off-site Parking	Parking Spaces	
Mini-Park PRIVATE (deed restricted residents only) ⁵	15916 Gulf Blvd., Redington Beach	0.32	80					x				18 paved permit only	
Pedestrian Access PRIVATE (deed restricted residents only) ⁵	158th Ave. , Redington Beach	0.34	10										
Mini-Park PRIVATE (deed restricted residents only) ⁵	Donald Moon Park, 15680 Gulf Blvd., Redington Beach	0.25	60					x					
Street End PRIVATE (deed restricted residents only) ⁵	156th Ave. , Redington Beach	0.02	25									Private use only	
Street End PRIVATE (deed restricted residents only) ⁵	155th Ave. , Redington Beach	0.25	50										
Pedestrian Access	154th Ave. , Madeira Beach	0.06	5										
City Park	Archibald Memorial Park, Madeira Beach	1.10	600				x	x	x	x		120 metered and 4 handicap	
Pedestrian Access	14900 Gulf Blvd., Madeira Beach	0.14	5										
Pedestrian Access	14710 Gulf Blvd., Madeira Beach	0.09	10										
Pedestrian Access	14600 Gulf Blvd., Madeira Beach	0.09	10										
County Park	145th Ave. , Madeira Beach	1.50	448			(4)	x	x				104 pavead metered	
Pedestrian Access	142nd Ave., Madeira Beach	0.09	20										

APPENDIX B: INVENTORY OF BEACH ACCESS IN PINELLAS COUNTY

							Public Facilities					
Public Access Facility	Address & Jurisdiction	Acreage	Beach Front (Feet)	Boat Ramps	Fishing Piers	Other uses	Rest Rooms	Showers	Changing Facilities	Food Concessions	Off-site Parking	Parking Spaces
City Park	141st Ave. , Madeira Beach	0.15	64			(4)						7 metered paved
Pedestrian Access	137th Ave., Madeira Beach	0.14	50									
Street End	136th Ave., Madeira Beach	0.09	50			(4)						9 metered paved
Street End	135th Ave., Madeira Beach	0.14	50			(4)						5 metered paved
Street End	134th Ave., Madeira Beach	0.17	50			(4)						5 metered paved
Street End	135th Ave., Madeira Beach	0.14	50			(4)						5 metered paved
Street End	134th Ave., Madeira Beach	0.17	50			(4)						9 metered paved
Pedestrian Access	133rd Ave., Madeira Beach	0.14	50			(4)						
Street End	132nd Ave., Madeira Beach	0.14	50			(4)						5 paved and 22 metered paved on Gulf blvd.
Street End	131st Ave., Madeira Beach	0.14	50			(4)						7 spaces
Street End	130th Ave., Madeira Beach	0.09	50			(4)						137 paved
Mini Park	John's Pass, Madeira Beach	2.30	270			x	x	x				127 paved metered
Municipal Beach	Shore & Beach Blvd., Gulfport	23.60	1,500		521' pier			x				150 spaces
City Park	North Shore Dr. & 7th Ave., St. Petersburg	33.36	1,700		1,150' scenic walk	x	x	x				260 spaces
City Park	Spa Beach (2nd Ave), St. Petersburg	10.40	900		walk	x	x	x				Adjacent museum provides parking

APPENDIX B: INVENTORY OF BEACH ACCESS IN PINELLAS COUNTY

							Public Facilities					
Public Access Facility	Address & Jurisdiction	Acreage	Beach Front (Feet)	Boat Ramps	Fishing Piers	Other uses	Rest Rooms	Showers	Changing Facilities	Food Concessions	Off-site Parking	Parking Spaces
City Park	66th St Grand View Park, St. Petersburg	7.90	200	1		x						
City Park	34th St South, St. Petersburg	65.00	300	5 lanes	x	x	x					75 spaces
Street End	127th Ave., Treasure Island	0.50	50									8 spaces
Street End	126th Ave., Treasure Island	0.10	50									12 paved metered
Street End	125th Ave., Treasure Island	0.03	50									5 spaces available from Gulf Blvd to 1st St.
Street End	124th Ave., Treasure Island	0.55	50			(4) x						4 spaces available from Gulf Blvd to 1st St.
Street End	123rd Ave., Treasure Island	0.75	50			(4) x						3 spaces available from Gulf Blvd to 1st St.
Street End	122nd Ave., Treasure Island	0.55	50			(4) x						2 spaces available from Gulf Blvd to 1st St.
Street End	121st Ave., Treasure Island	0.09	50			(4)						
Street End	120th Ave., Treasure Island	0.21	50			(4)						
Street End	119th Ave., Treasure Island	0.21	50			x						
Pedestrian Access	11750 Gulf Blvd., Treasure Island	0.12	10									

APPENDIX B: INVENTORY OF BEACH ACCESS IN PINELLAS COUNTY

							Public Facilities					
Public Access Facility	Address & Jurisdiction	Acreage	Beach Front (Feet)	Boat Ramps	Fishing Piers	Other uses	Rest Rooms	Showers	Changing Facilities	Food Concessions	Off-site Parking	Parking Spaces
Pedestrian Access	11600 Gulf Blvd., Treasure Island	0.12	10									
Street Petersburg City Park	112th Ave., Treasure Island	1.72	475				x	x	x	x		139 metered and 3 handicap
Pedestrian Access	10836 Gulf Blvd., Treasure Island	0.12	10									
Pedestrian Access	105th Ave., Treasure Island	0.02	10									
County Park	104th Ave., Treasure Island	1.00	200			(4)	x	x				67 spaces
Mini-Park	10300 Gulf Blvd., Treasure Island	0.10	50			(4)						17 spaces and 3 handicap
Street End	102nd Ave., Treasure Island	0.09	50									14 spaces
Street End	101st Ave., Treasure Island	0.10	50									4 spaces
Street End	100th Ave., Treasure Island	0.10	72			x						16 metered and wheelchair ramp
Pedestrian Access	9940 Gulf Blvd., Treasure Island	0.16	10									
Street End	99th Ave., Treasure Island	0.08	50									3 spaces
Street End	97th Ave., Treasure Island	0.05	50									5 spaces
Street End	32nd Ave., Treasure Island		50									
Mini-Park	West Gulf Blvd. & 88th Ave., Treasure Island	0.39	50									10 metered
Pedestrian Access	8574 Gulf Blvd., Treasure Island	0.12	10									

APPENDIX B: INVENTORY OF BEACH ACCESS IN PINELLAS COUNTY

							Public Facilities					
Public Access Facility	Address & Jurisdiction	Acreage	Beach Front (Feet)	Boat Ramps	Fishing Piers	Other uses	Rest Rooms	Showers	Changing Facilities	Food Concessions	Off-site Parking	Parking Spaces
Pedestrian Access	8478 West Gulf Blvd., Treasure Island	0.02	10									
Pedestrian Access	8456 Gulf Blvd., Treasure Island	0.12	10									
Pedestrian Access	8406 Gulf Blvd., Treasure Island	0.12	10									
Mini-Park	81st Ave., Treasure Island	0.96	190			(4)						43 metered
Pedestrian Access	80th Ave., Treasure Island	0.12	10									
Mini-Park	79th Ave., Treasure Island	0.90	460			(4)						55 metered
Mini-Park	Upham Beach, St. Pete Beach	3.94	781			(4)						198 paved metered
Pedestrian Access	Near 55th Ave., St. Pete Beach	0.37	6									
Street End	52nd Ave., St. Pete Beach	0.12	50			(4)						
Street End	51st Ave., St. Pete Beach	0.12	50			(4)						8 metered
County Park	Weaver Tract, St. Pete Beach	5.50	500			(4)	x	x				235 metered spaces
Pedestrian Access	Adjacent to Weaver Tract, St. Pete Beach		3									
Pedestrian Access	Near 45th Ave., St. Pete Beach		4									
Pedestrian Access	44th Ave. & Gulf Blvd., St. Pete Beach	0.14	6									
Pedestrian Access	Near 43rd Ave., St. Pete Beach	0.33	10									
Street End	37th Ave., St. Pete Beach	0.12	50									

APPENDIX B: INVENTORY OF BEACH ACCESS IN PINELLAS COUNTY

							Public Facilities						
Public Access Facility	Address & Jurisdiction	Acreage	Beach Front (Feet)	Boat Ramps	Fishing Piers	Other uses	Rest Rooms	Showers	Changing Facilities	Food Concessions	Off-site Parking	Parking Spaces	
Street End	36th Ave., St. Pete Beach	0.14	50										
Street End	Cabrilo Ave., St. Pete Beach	0.12	50									Parking available on 32nd Ave.	
Street End	31st Ave., St. Pete Beach	0.01	5										
Street End	30th Ave., St. Pete Beach	0.12	5									8 paved permit only	
Street End	29th Ave., St. Pete Beach	0.12	50									8 paved permit only	
Street End	28th Ave., St. Pete Beach	0.12	50									7 paved permit only	
Street End	27th Ave., St. Pete Beach	0.12	50									6 paved permit only	
Street End	26th Ave., St. Pete Beach	0.12	45									10 paved permit only	
Street End	23 rd Ave., St. Pete Beach	0.12	50									Permit only	
Pass-A-Grille Beach	1 st Ave. through 22 nd Ave., St. Pete Beach	20	5,400			(4)	x	x		x		616 metered spaces along beach	
County Park	Fort DeSoto Park, Pinellas County	900	29,040	37 lane	1,500'	camping	x	x	x	x		3,252 paved	
TOTAL		2,519.37⁶	117,739⁶	37	12,771⁶						534	13,766⁶	

Sources: Pinellas County Planning Department, 1996;; Florida Department of Environmental Protection Florida Recreation and Parks Facility Inventory, 1991.

¹ Location indicated in Figure

² 156 off-street parking spaces available for public use in the Avalon, Kendall, Rockaway Street area

³ Boat launching is permitted in shallow water along beach, however no improved pick ups exist

⁴ Site has dune walkovers

⁵ Quantities not included in grand totals

⁶ Totals do not include quantities from sites designated as private and for residents only