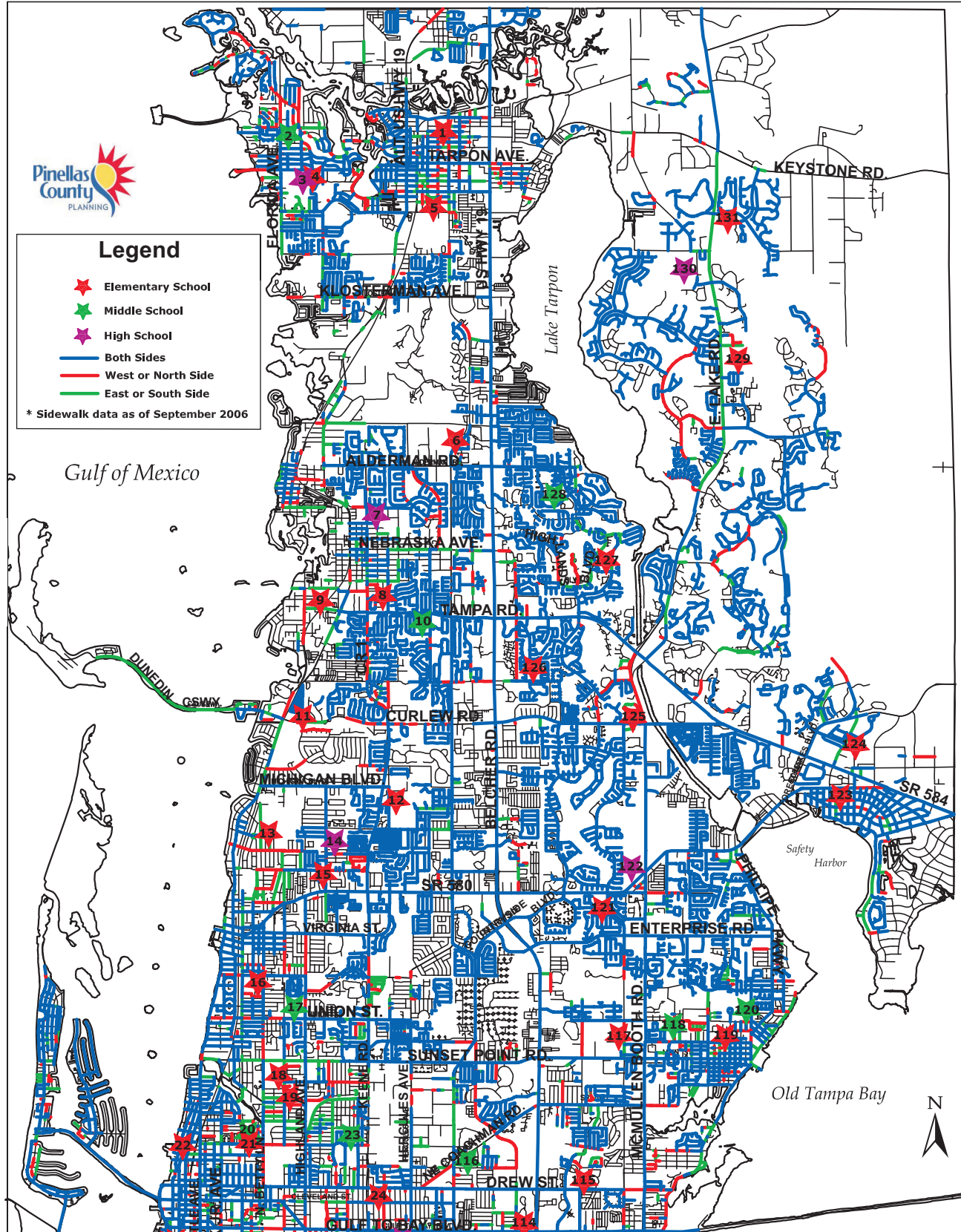




**Legend**

- ★ Elementary School
- ★ Middle School
- ★ High School
- Both Sides
- West or North Side
- East or South Side

\* Sidewalk data as of September 2006



- |                                |                                     |                                 |
|--------------------------------|-------------------------------------|---------------------------------|
| 1. TARPON SPRINGS ELEMENTARY   | 17. DUNEDIN HIGHLAND MIDDLE         | 120. SAFETY HARBOR MIDDLE       |
| 2. TARPON SPRINGS MIDDLE       | 18. SANDY LANE ELEMENTARY           | 121. LEILA G. DAVIS ELEMENTARY  |
| 3. TARPON SPRINGS HIGH         | 19. KINGS HIGHWAY ELEMENTARY        | 122. COUNTRYSIDE HIGH           |
| 4. SUNSET HILLS ELEMENTARY     | 20. CLEARWATER INTERMEDIATE MIDDLE  | 123. OLDSMAR ELEMENTARY         |
| 5. TARPON SPRINGS FUNDAMENTAL  | 21. CURTIS FUNDAMENTAL              | 124. FOREST LAKES ELEMENTARY    |
| 6. SUTHERLAND ELEMENTARY       | 22. NORTH WARD ELEMENTARY           | 125. CURLEW CREEK ELEMENTARY    |
| 7. PALM HARBOR UNIVERSITY HIGH | 23. KENNEDY MIDDLE                  | 126. LAKE ST. GEORGE ELEMENTARY |
| 8. PALM HARBOR ELEMENTARY      | 24. SKYCREST ELEMENTARY             | 127. HIGHLAND LAKES ELEMENTARY  |
| 9. OZONA ELEMENTARY            | 25. SOUTH WARD ELEMENTARY           | 128. CARWISE MIDDLE             |
| 10. PALM HARBOR MIDDLE         | 113. CLEARWATER HIGH                | 129. CYPRESS WOODS ELEMENTARY   |
| 11. THE ATHENIAN ACADEMY       | 114. PLATO ACADEMY                  | 130. EAST LAKE HIGH             |
| 12. GARRISON JONES ELEMENTARY  | 115. EISENHOWER ELEMENTARY          | 131. BROOKER CREEK ELEMENTARY   |
| 13. SAN JOSE ELEMENTARY        | 116. COACHMAN FUNDAMENTAL           |                                 |
| 14. DUNEDIN HIGH               | 117. MCMULLEN BOOTH ELEMENTARY      |                                 |
| 15. ACADEMIE DA VINCI          | 118. SAFETY HARBOR SECONDARY SCHOOL |                                 |
| 16. DUNEDIN ELEMENTARY         | 119. SAFETY HARBOR ELEMENTARY       |                                 |

**SIDEWALKS - NORTH COUNTY**

**Figure 4-2A**

*Pinellas County Comprehensive Plan*

NCoSwalksFig4\_2A.cdr  
5/19/09