

How-to Access Pinellas Enterprise Wireless

for: Windows 7

Important! Business Technology Services (BTS) **must** know your wireless network adapters' MAC address for a successful connection. See 'Finding_your_MAC_address_on_Windows' for details on how to provide this information to BTS.

*The following procedure is a **one-time configuration**.* This process will install a client certificate on your computer and auto-configure your wireless profile.

1. Click the wireless icon on your taskbar.
2. Click the Pinellas_Enterprise SSID

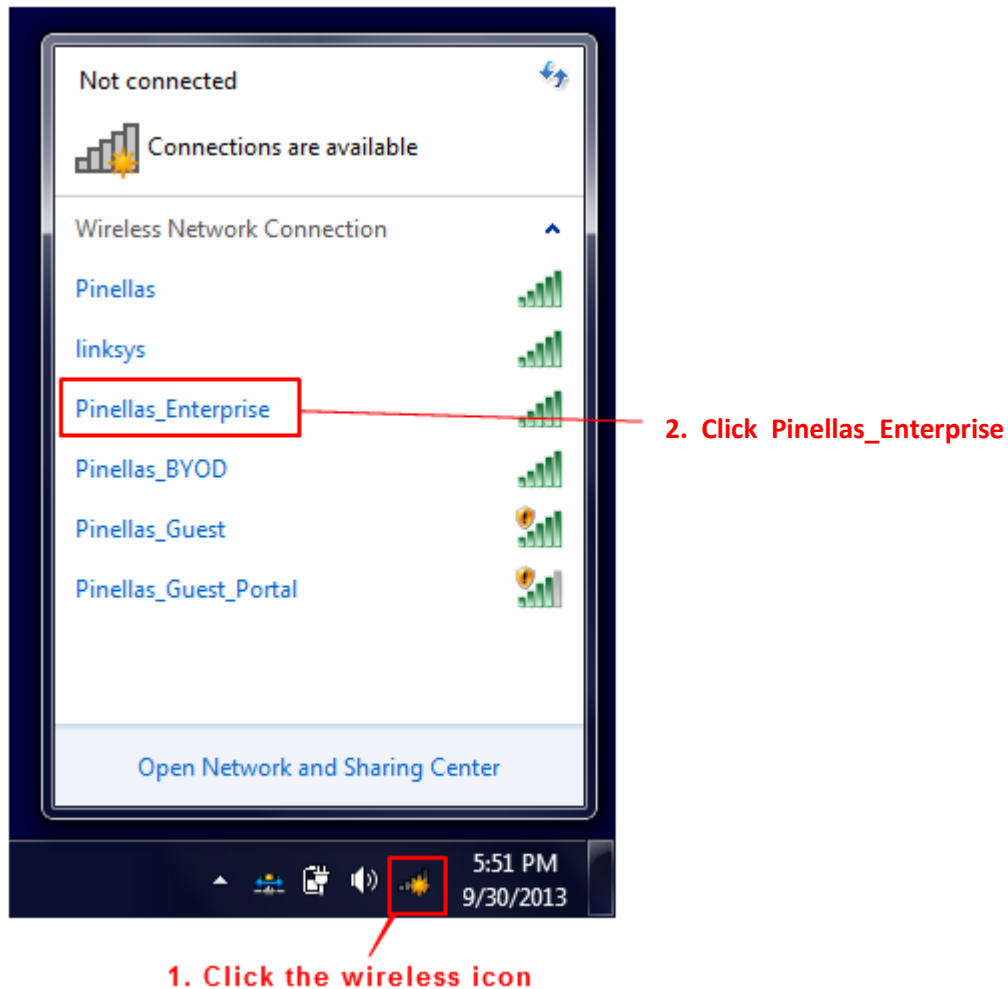


Figure 1

3. Click the Connect button.

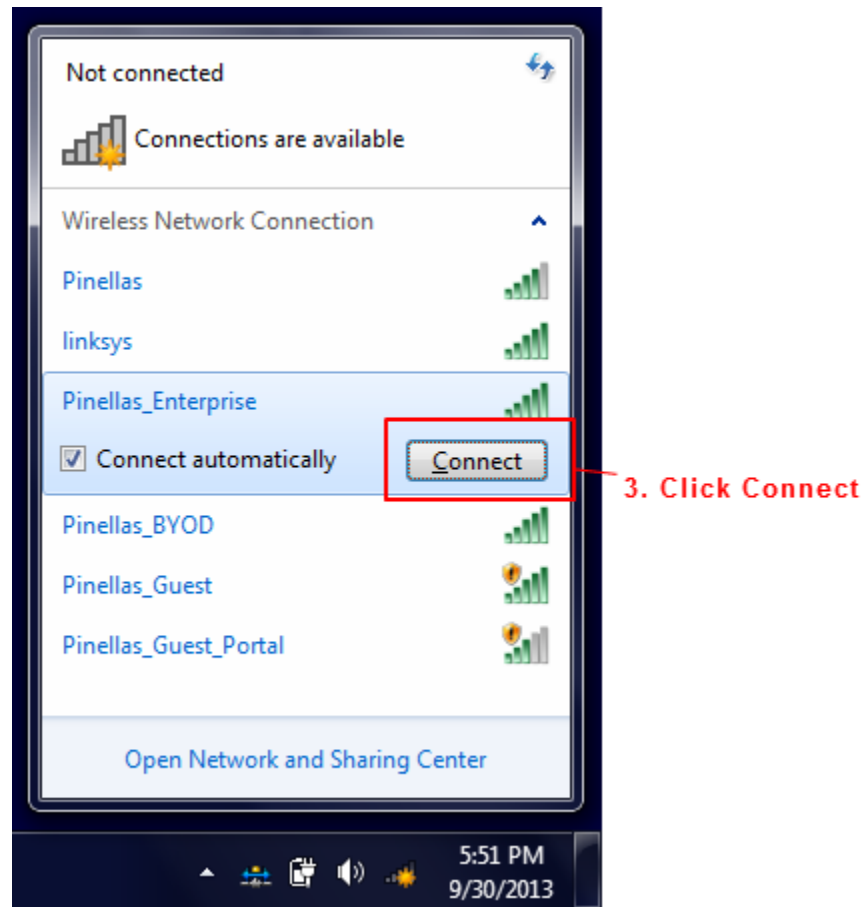


Figure 2

4. Click the Connect button for this security alert.
This may not occur for all users.

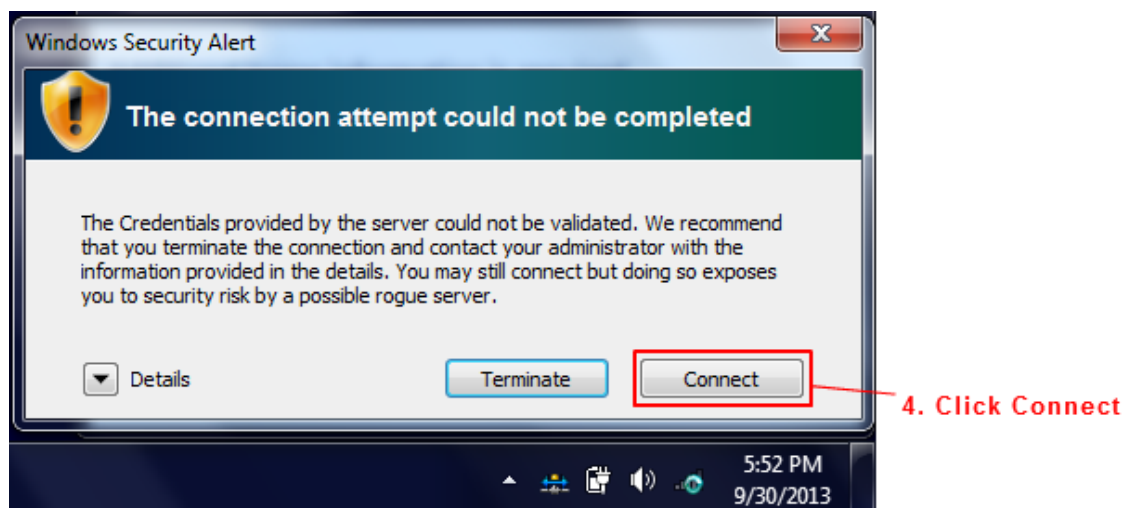


Figure 3

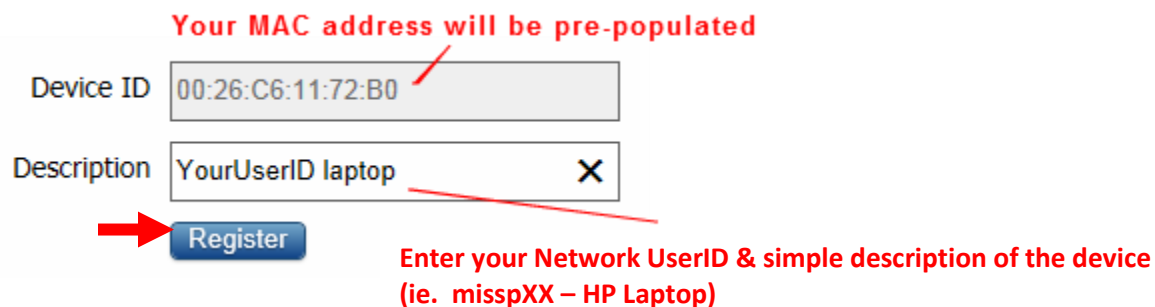
5. Open Internet Explorer and browse to any website. You will be redirected to the following dialog.



The dialog box is titled "Device Registration". It contains a message: "This device has not been registered. Click the 'Register' button to run the Cisco Network Setup Assistant. This application installs the required certificates and configures your device to use the secure network." Below the message are two input fields: "Device ID" with the value "00:26:C6:11:72:B0" and "Description" with the value "YourUserID laptop". There is a "Register" button at the bottom.

Figure 4

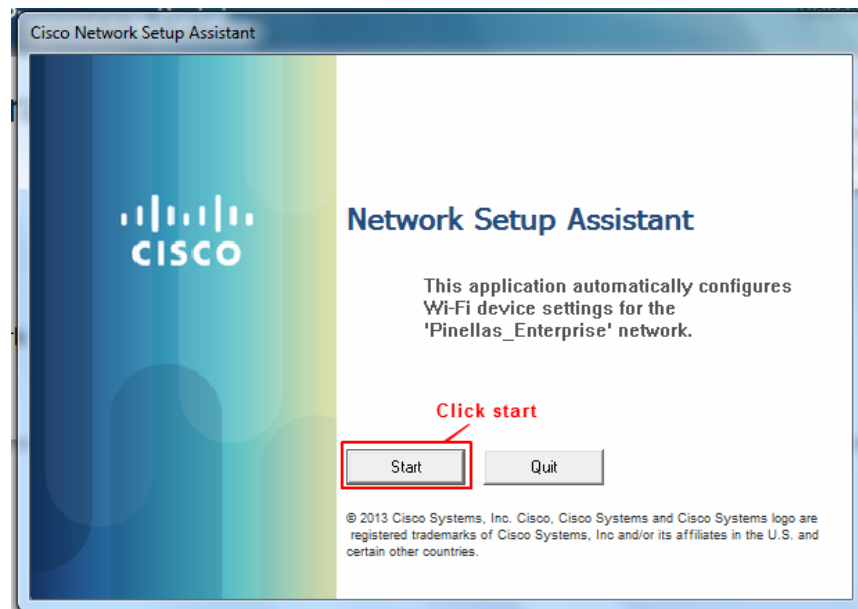
6. You will see your Device ID (MAC address) pre-populated.
7. Enter your network user ID and a simple description of the device you are connecting with.
8. Click the Register button.



This figure shows the same "Device Registration" dialog box as Figure 4, but with red annotations. A red arrow points to the "Device ID" field with the text "Your MAC address will be pre-populated". Another red arrow points to the "Description" field with the text "Enter your Network UserID & simple description of the device (ie. misspXX – HP Laptop)". A red arrow points to the "Register" button.

Figure 5

9. Click start once the Network Setup Assistant appears.



The window is titled "Cisco Network Setup Assistant". It features the Cisco logo on the left. The main text says: "Network Setup Assistant. This application automatically configures Wi-Fi device settings for the 'Pinellas_Enterprise' network." At the bottom, there are two buttons: "Start" and "Quit". A red box highlights the "Start" button with the text "Click start" above it. At the very bottom, there is a copyright notice: "© 2013 Cisco Systems, Inc. Cisco, Cisco Systems and Cisco Systems logo are registered trademarks of Cisco Systems, Inc and/or its affiliates in the U.S. and certain other countries."

Figure 4

10. Say Yes to the installation of any certificates.

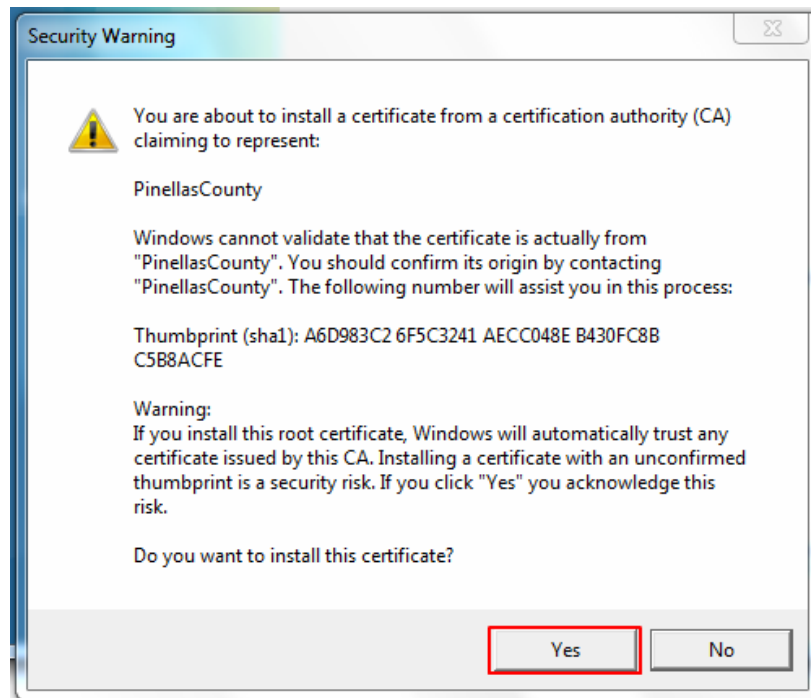


Figure 5

11. The configuration is complete! Click exit.

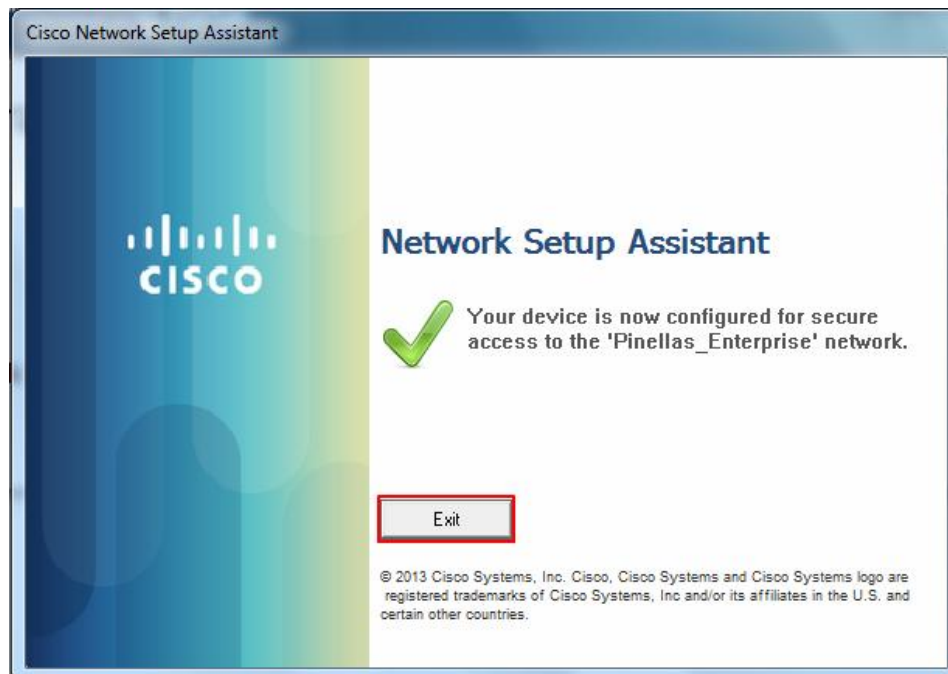


Figure 6

12. Close the Internet Explorer window below.

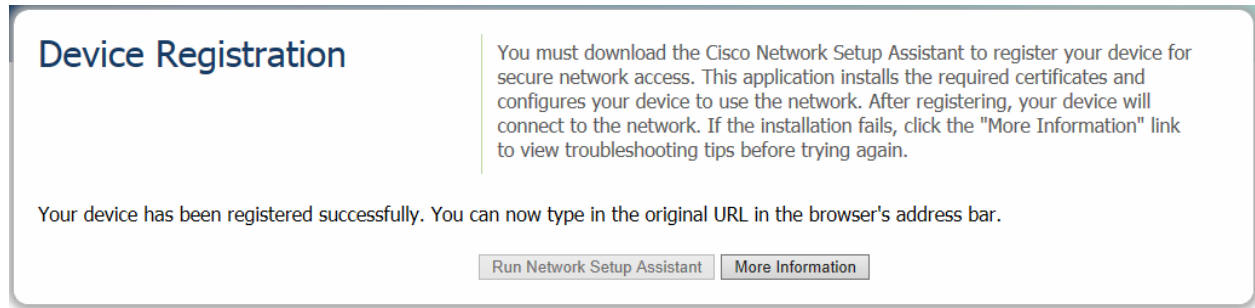


Figure 7

If any issue should occur, please contact the Customer Service Center for assistance.
Customer Service Center: 727-453-HELP (4357)