

# Wireless How-to for Windows XP Pinellas Enterprise

The following procedure is a one-time configuration. This process will install a client certificate on your computer and auto-configure your wireless profile.

**Important!** BTS must know your wireless network adapters' MAC address for a successful connection.

1. Click the wireless icon on your taskbar. (figure1)
  - a. Alternatively you can click the **Start Button > Settings > Control Panel > Network Connections**. Right-click the "Wireless Network Connection" icon and select "View Available Wireless Networks".



Figure 1

2. Click on "Change advanced settings" located on the left side of the window. (figure 2)

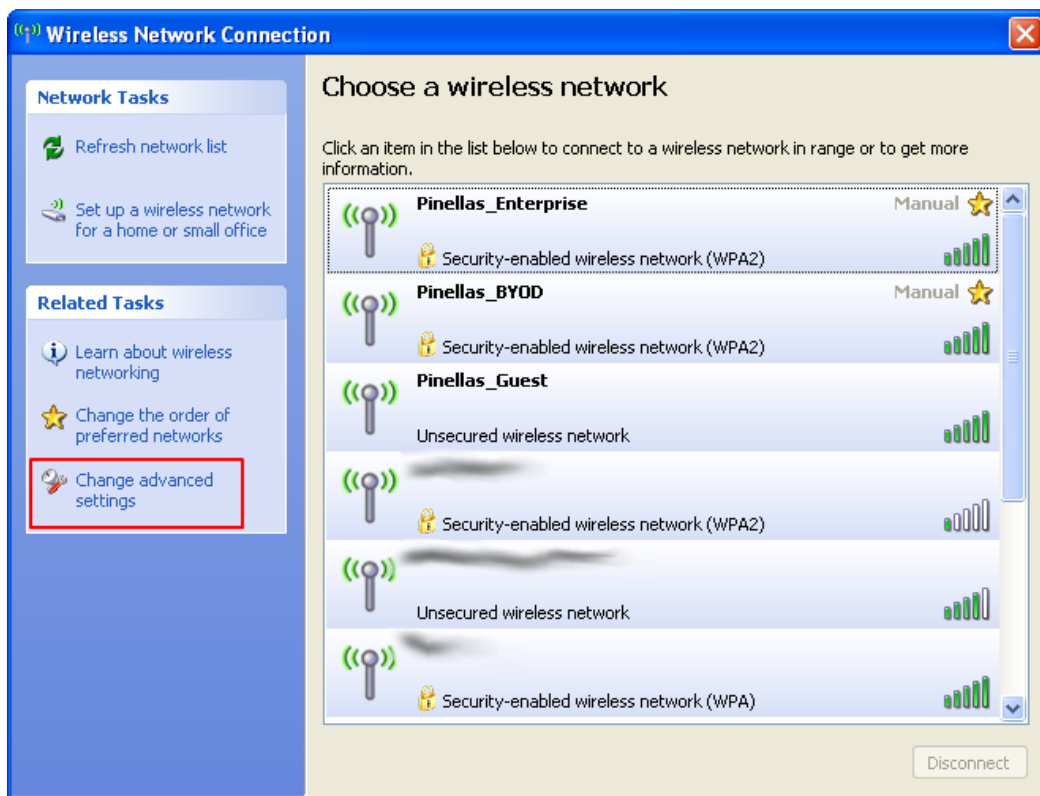


Figure 2

3. Click on the center tab "Wireless Networks". (Figure 3)
4. Click the **Add...** button in the "Preferred networks" section of the window. (Figure 3)

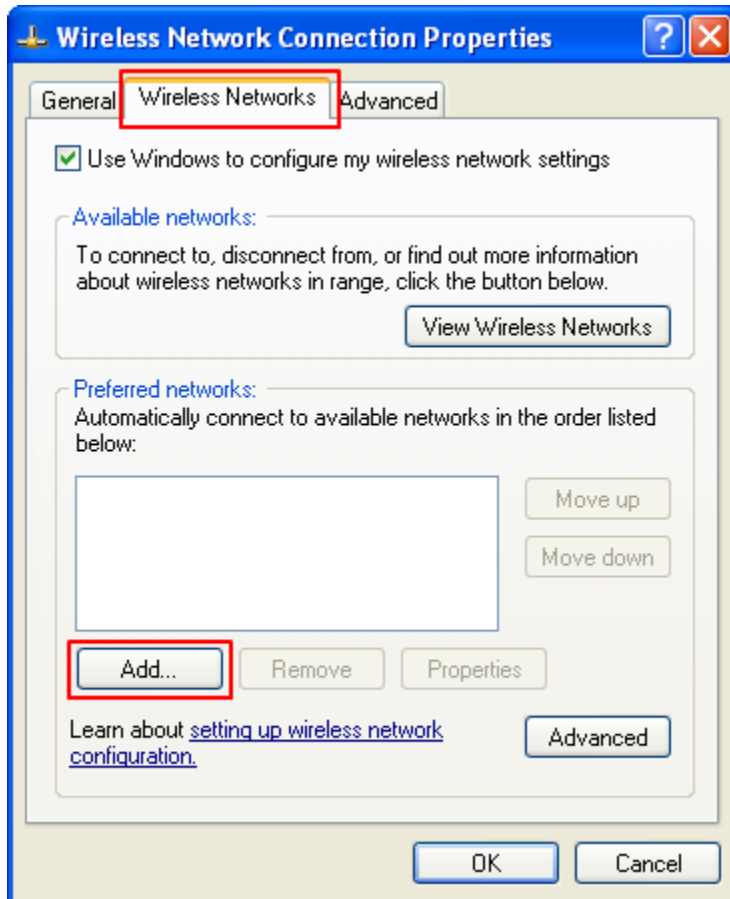


Figure 3

- From the “Association” tab, enter **Pinellas\_Enterprise** (case sensitive and include underscore) in the “Network name (SSID)” field. (Figure 4)
- Under the “Wireless network key” section make sure to select **WPA2** and **AES**. (Figure 4)

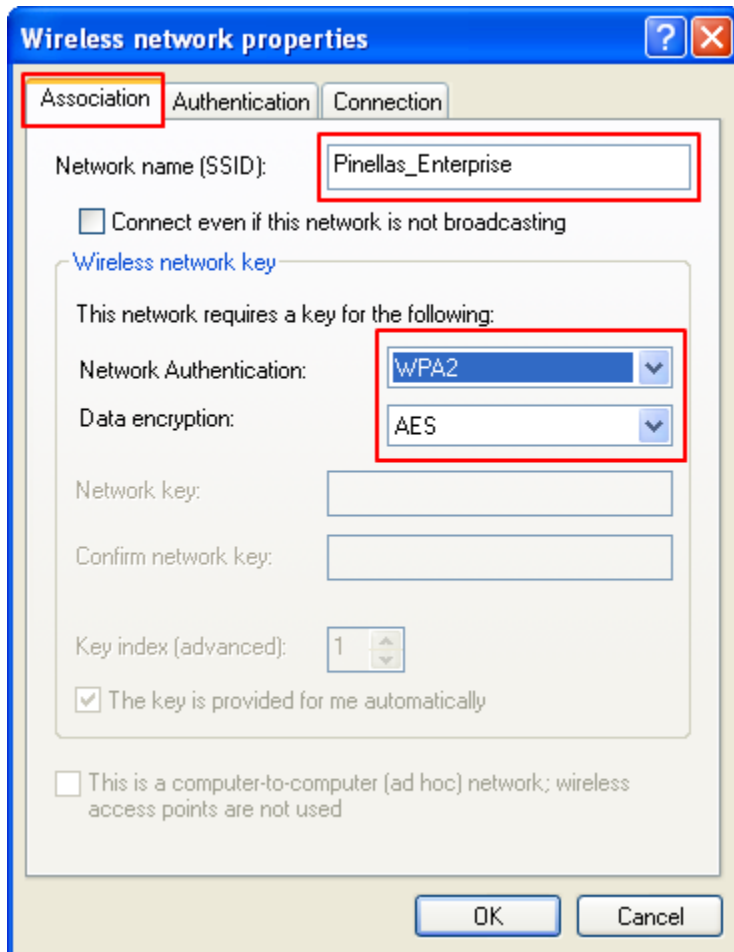


Figure 4

7. From the “Authentication” tab, select **Protected EAP (PEAP)**. (figure 5)
8. Uncheck the checkbox “Authenticate as computer...” (figure 5)
9. Click the “Properties” button. (figure 5)

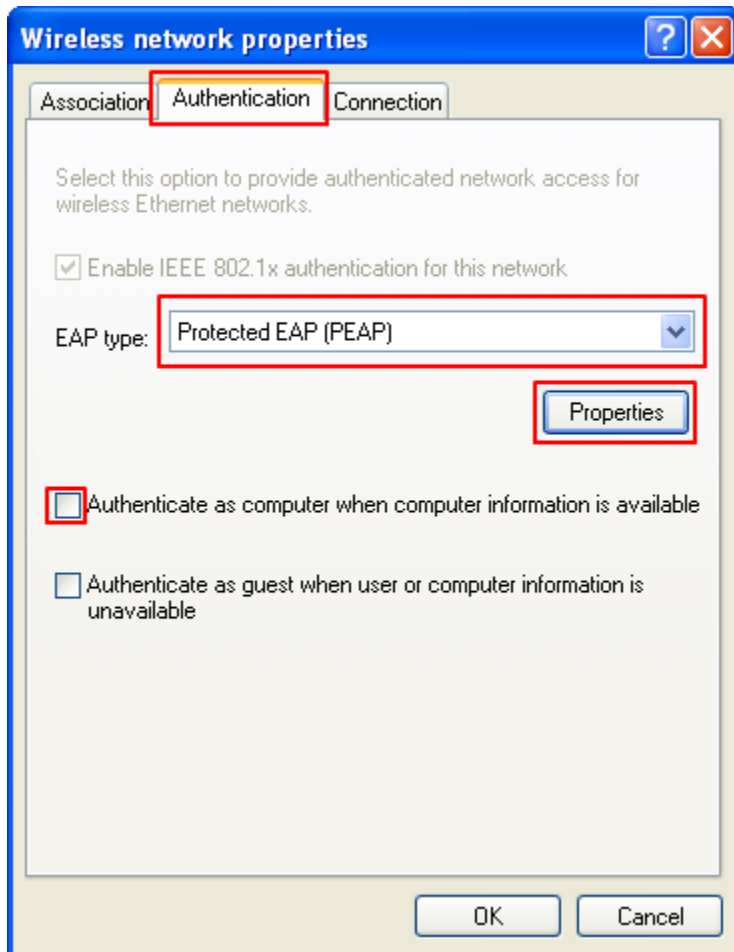


Figure 5

10. Uncheck the checkbox for “Validate server certificate”. (figure 6)

11. Click the “Configure...” button. (figure 6)

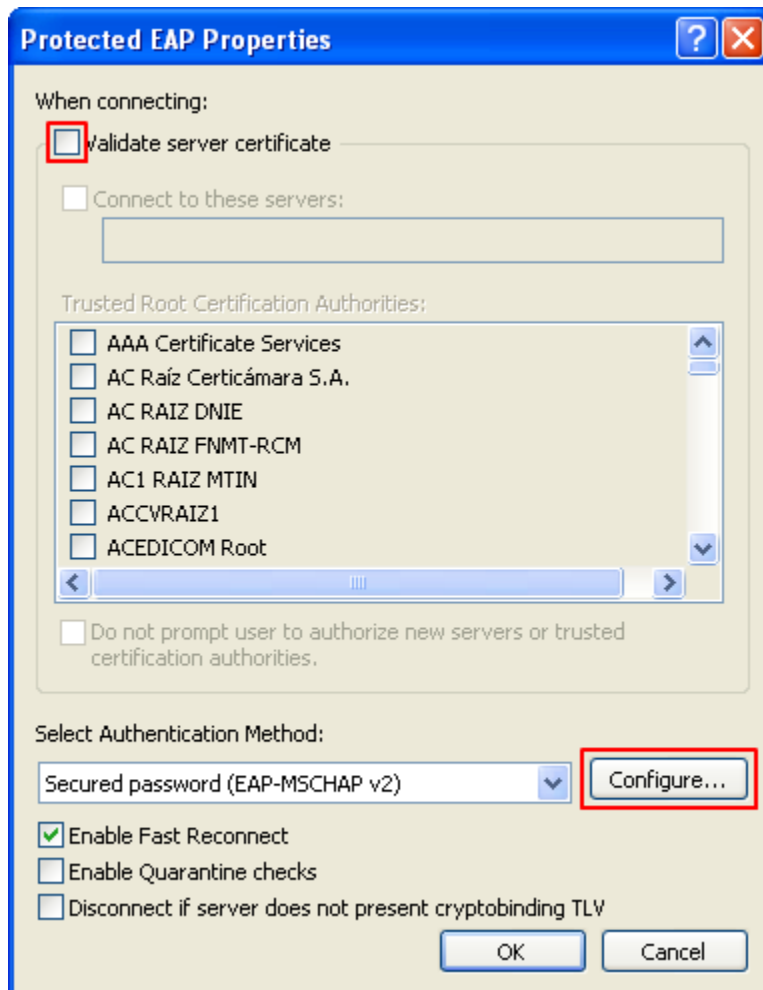


Figure 6

12. Make sure that the checkbox is checked. (This will be the case for most users)
  - a. If your laptop is **not** joined to an Active Directory domain you will need to uncheck the checkbox. Click the “OK” button. (figure 7)

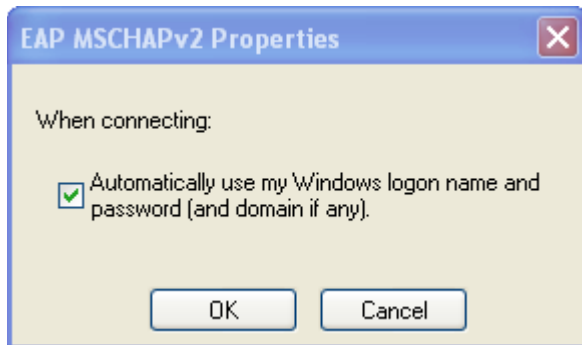


Figure 7

13. Click the “OK” button on each window to close and save the configuration.
14. You will now need to connect to the Pinellas\_Enterprise wireless network by clicking the wireless icon on you taskbar. (figure 8)



Figure 8

15. Click the **Pinellas\_Enterprise** SSID and then click the “Connect” button. (figure 9)

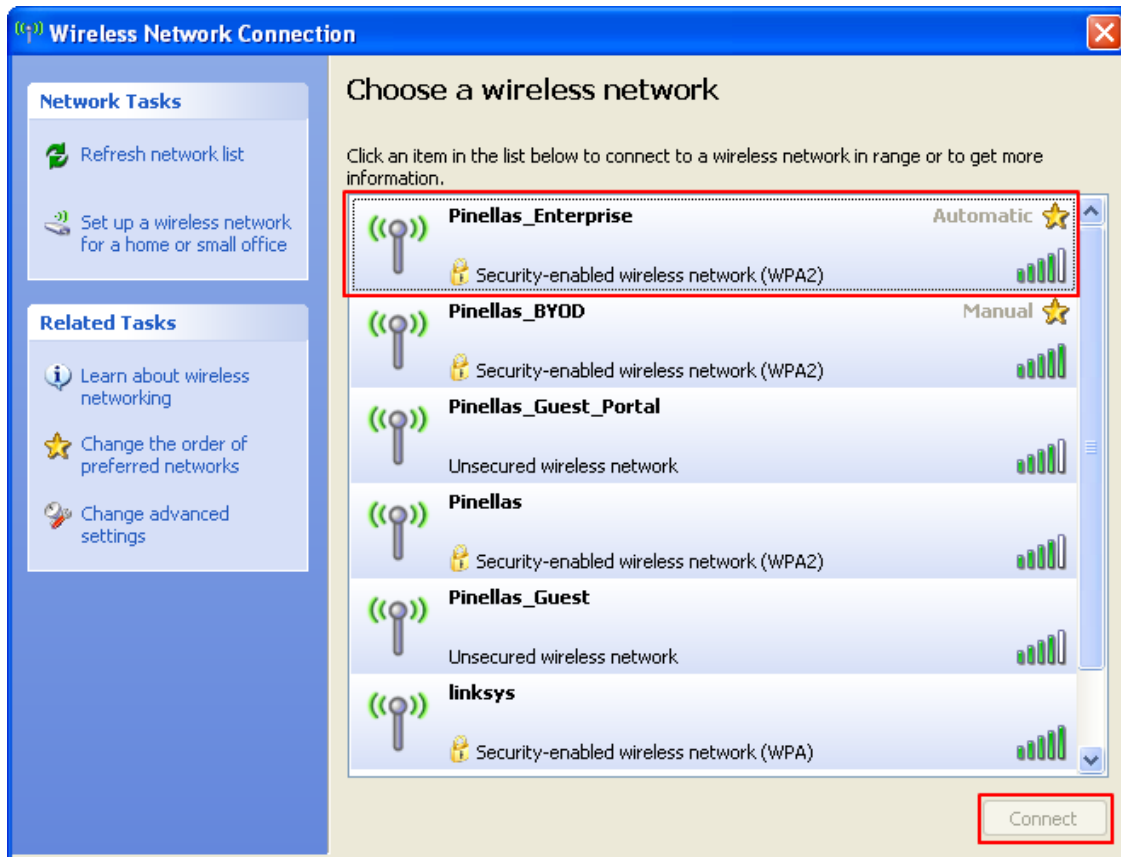


Figure 9

16. You may see a balloon popup (figure 10), which when clicked will open the **Enter Credentials** dialog.
17. Enter your username and password. The Logon domain will usually not be necessary. (figure 11)

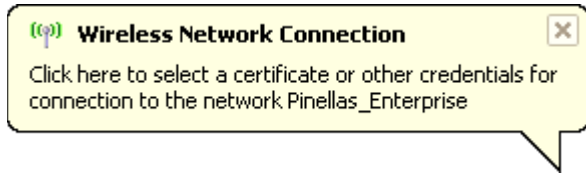


Figure 10

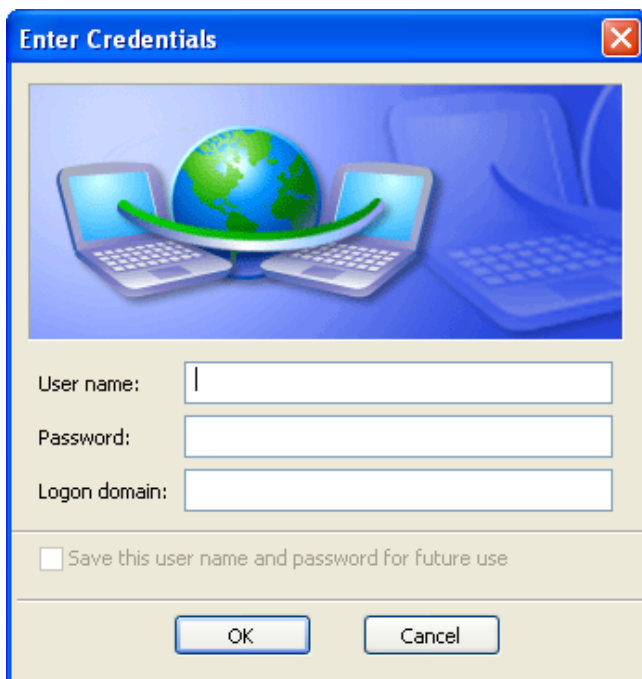


Figure 11



18. You will see a connecting window which will show “Connected!” when complete. (figures 12 and 13)

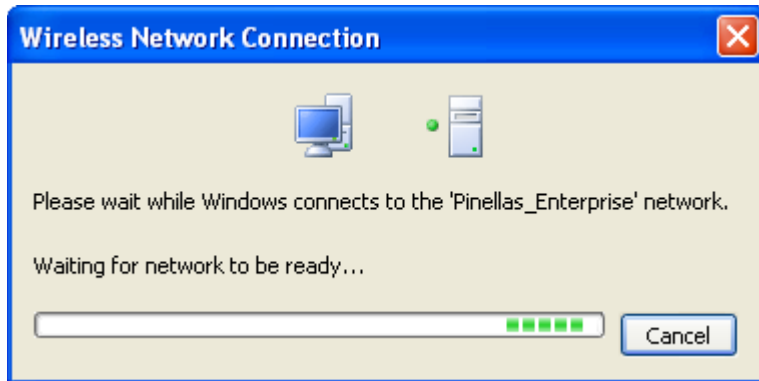


Figure 12



Figure 13

**You’re not fully connected yet. Please continue. The installation of a certificate and reconfiguration of the wireless settings is required.**

19. Now launch Internet Explorer and browse to any website. You will be redirected to the following dialog. (figure 14)

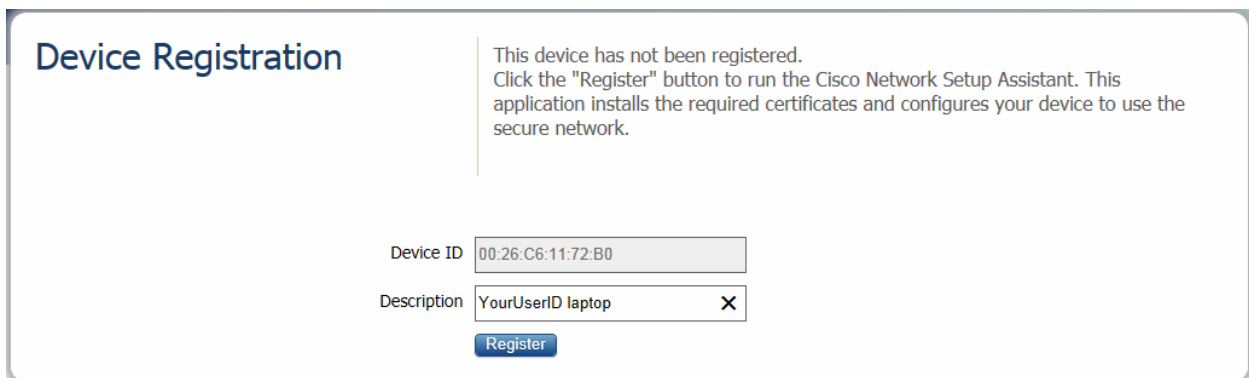


Figure 14

20. You will see your Device ID (MAC address) pre-populated. (figure 15)
21. Enter your user ID and a simple description of the device you are connecting with. (figure 15)
22. Click the Register button. (figure 15)

**Your MAC address will be pre-populated**

Device ID

Description  X

**Enter your User ID and a simple description of the device**

Figure 15

23. Click start once the Network Setup Assistant appears. (figure 16)

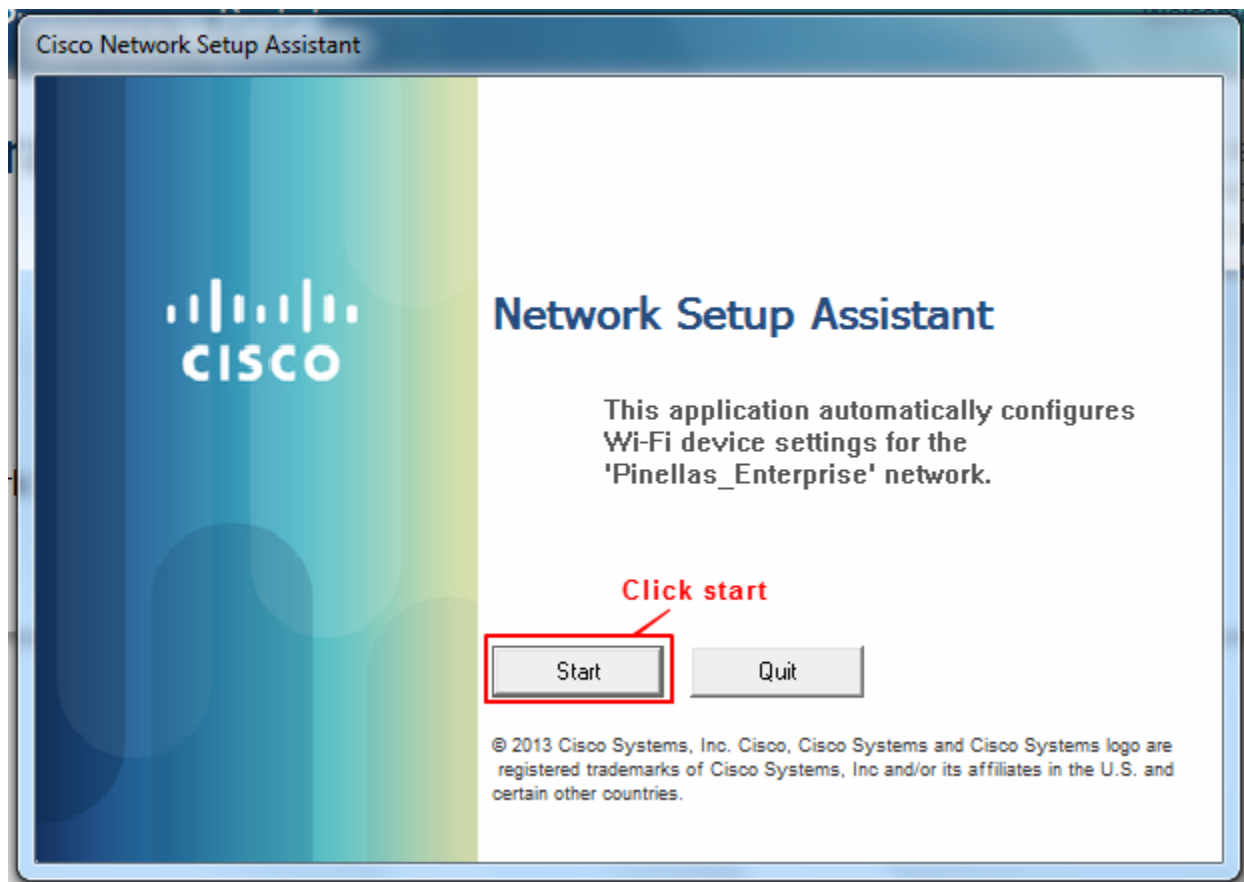


Figure 16

24. Say Yes to the installation of any certificates. (figure 17)

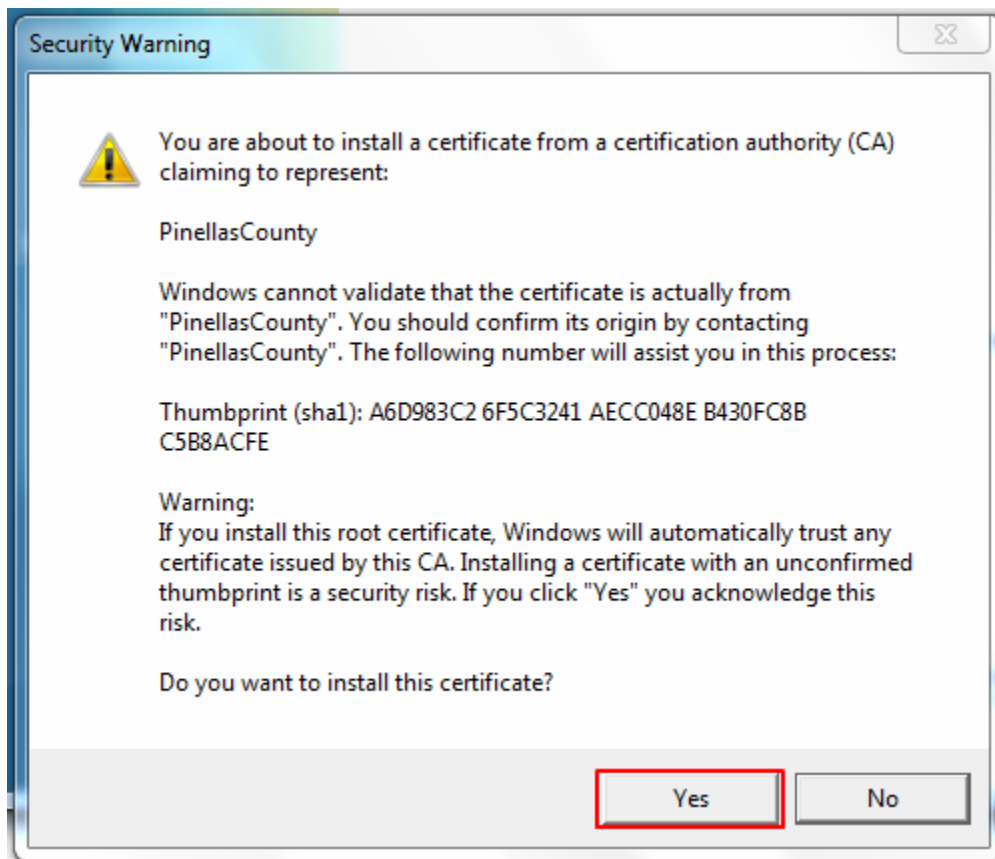


Figure 17

25. You may now click exit. (figure 18)

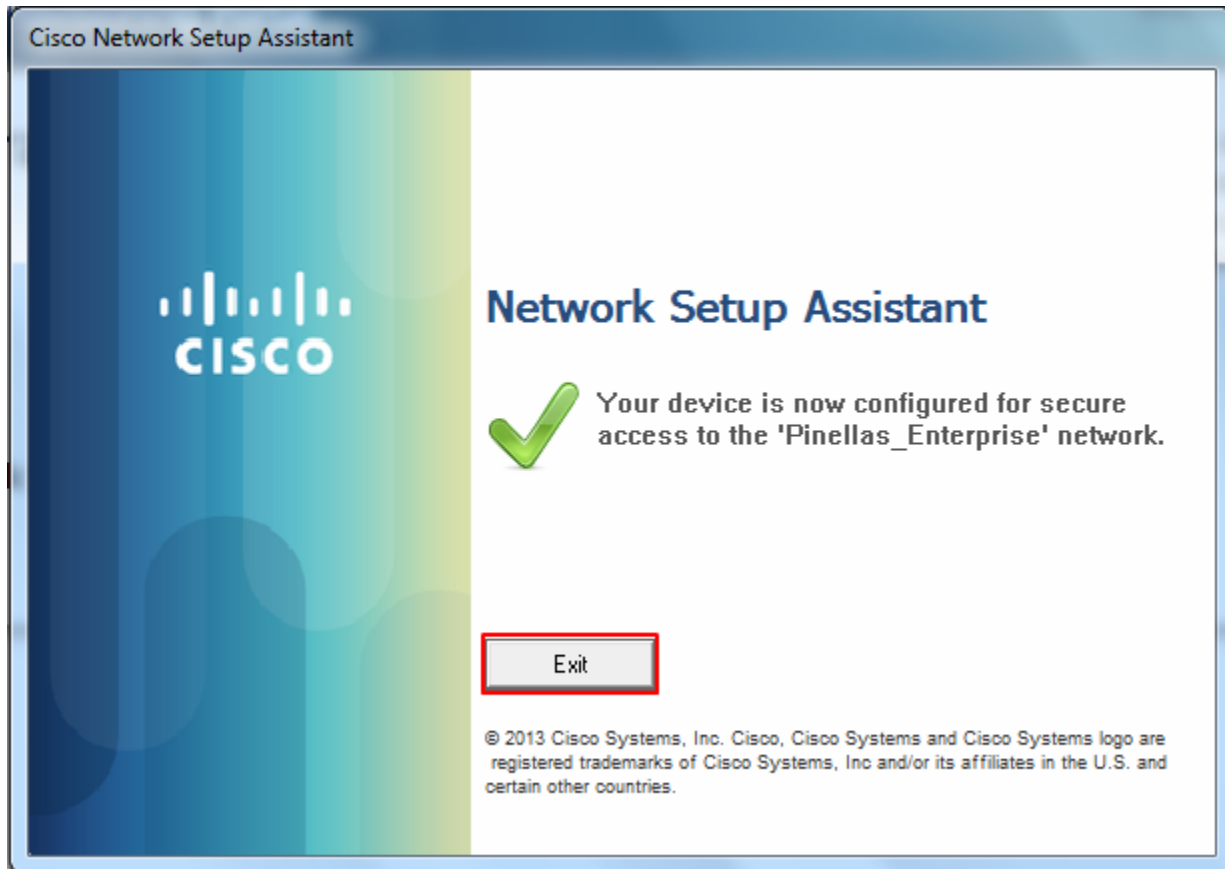


Figure 18

26. You may close the Internet Explorer window below. (figure 19)

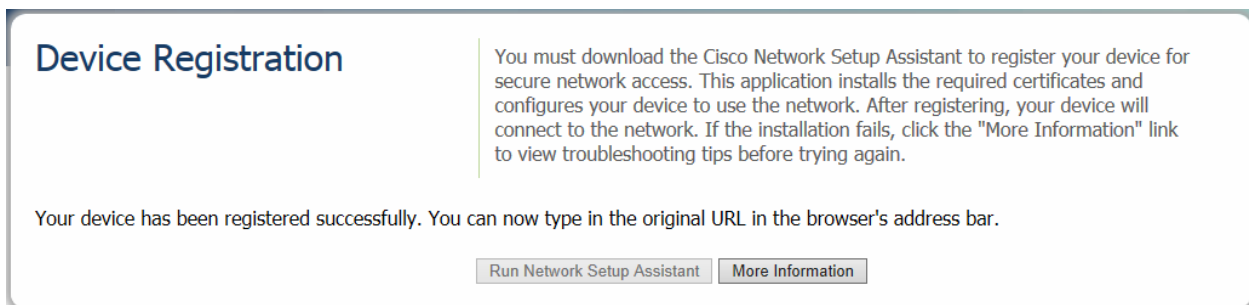


Figure 19

## Let's verify the wireless configuration is correct.

27. Click the wireless icon on your taskbar. *(figure 20)*
  - a. Alternatively you can click the **Start Button > Settings > Control Panel > Network Connections**. Right-click the "Wireless Network Connection" icon and select "View Available Wireless Networks".



Figure 20

28. Click on "Change advanced settings" located on the left side of the window. *(figure 21)*

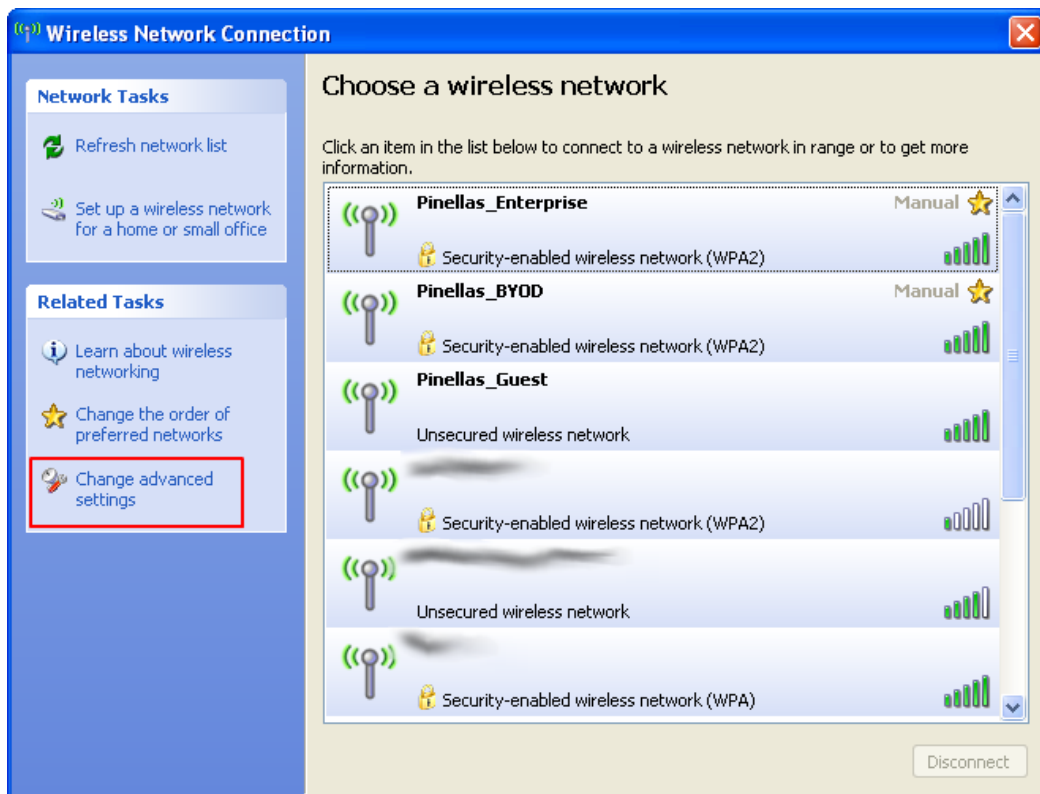


Figure 21

29. Click on the center tab “Wireless Networks”. (figure 22)
30. Select the **Pinellas\_Enterprise** and click the “Properties” button in the “Preferred networks” section of the window. (figure 22)

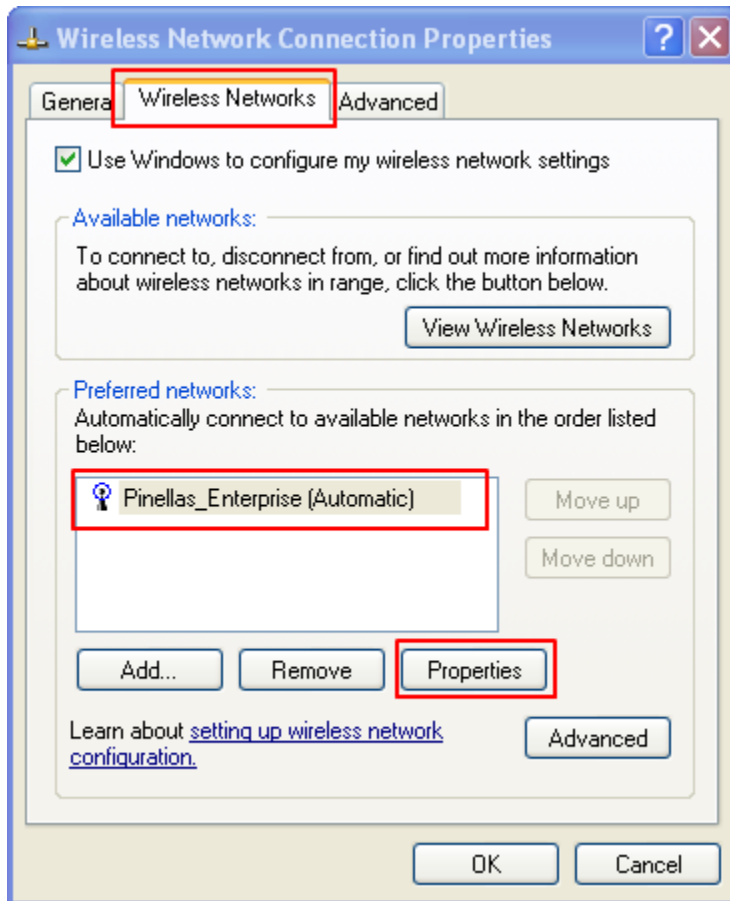


Figure 22

31. From the “Association” tab, verify the following.

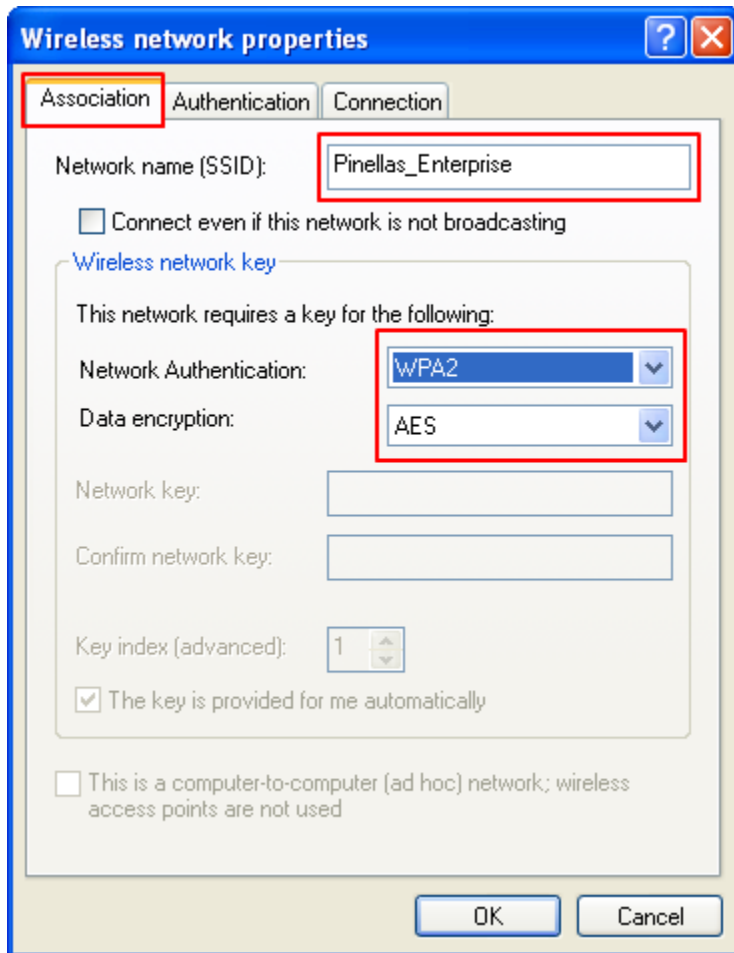


Figure 23

32. Verify the following are now configured.
33. Click the "Properties" button. (figure 24)

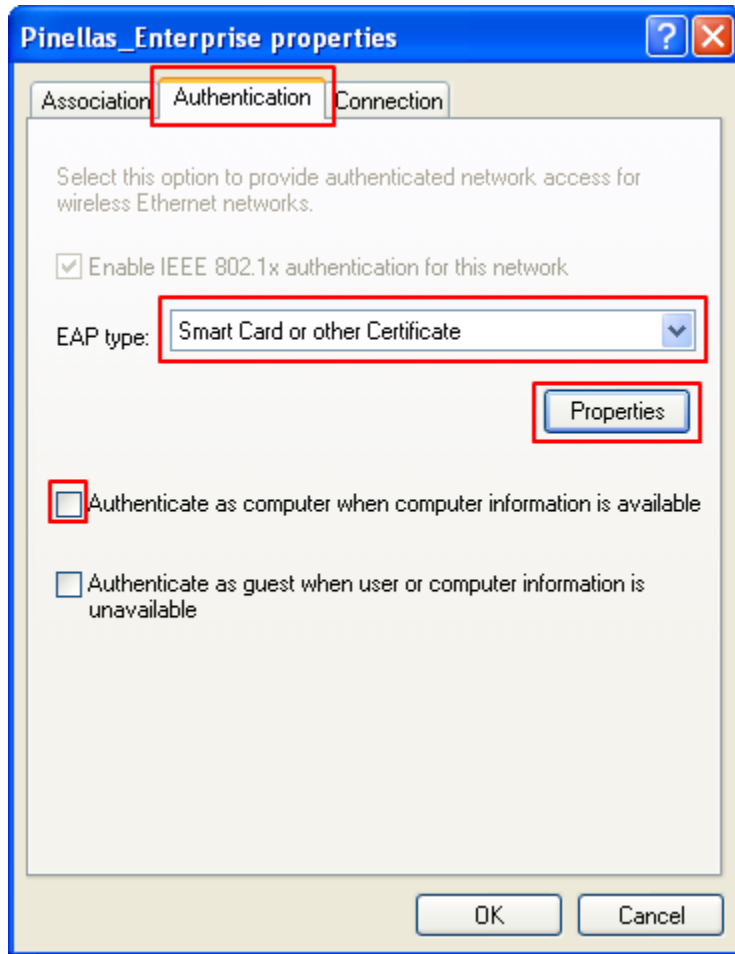


Figure 24



34. Verify the following is correctly configured. (figure 25)

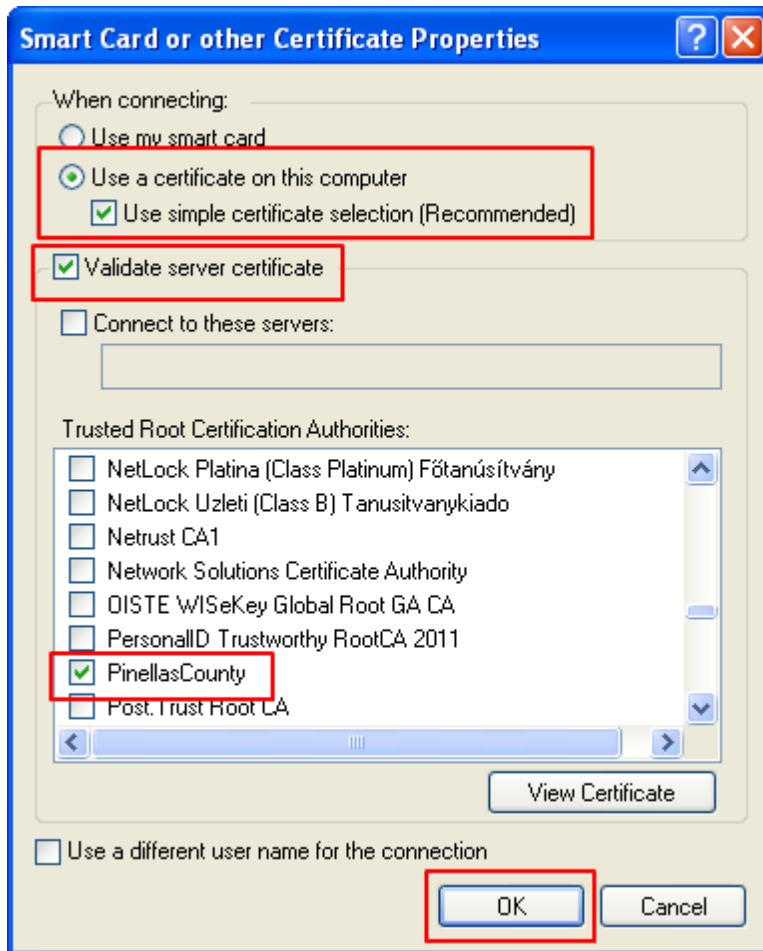


Figure 25

35. Click the "OK" button until you exit out of any open windows.

36. You may now connect to the **Pinellas\_Enterprise** wireless network.

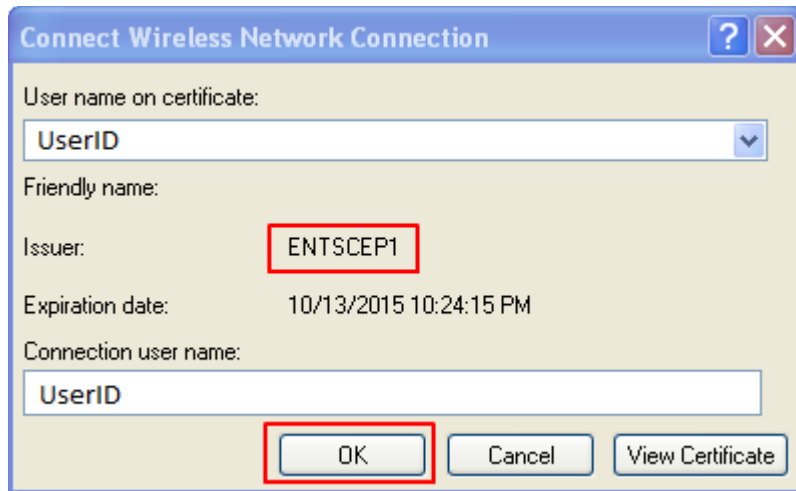


Figure 25

**If you cannot connect please try restarting your laptop.**

**If any issue should occur please contact the Customer Service Center for assistance.**