

NOTICE OF PROPOSED RULE

NAME OF AGENCY

Florida Fish and Wildlife Conservation Commission

RULE NO: RULE TITLE:

68C-22.016 Pinellas County Zones

PURPOSE AND EFFECT: The purpose of the proposed rule is to improve protection of manatees and manatee habitat by limiting allowable motorboat speed in portions of Pinellas County. This rule is being proposed after considering recommendations made by the Pinellas County Local Rule Review Committee that was formed pursuant to 379.2431(2)(f), FS. The effect of the rule would be to limit allowable motorboat speed in portions of western Pinellas County. Additional information is available at:

<http://myfwc.com/wildlifehabitats/managed/manatee/rulemaking/>.

SUMMARY: The proposed rule would establish manatee protection zones in portions of western Pinellas County that limit allowable motorboat speed to Slow Speed. Most zones would be in effect only between April and October, while some would be in effect year-round and one would be in effect only between November 15 and March 31. The zones would add 0.5 linear miles of new Slow Speed zone on the Intracoastal Waterway. In many locations the zones would have no impact on the water because of existing boating safety zones that are more restrictive. The proposed rule includes new descriptions of the existing zones in the eastern portion of the county but the zones in this area are not being substantively changed. The new descriptions are needed so that all zone descriptions are based on the same geographic projection and the most up-to-date and accurate shoreline information.

SUMMARY OF STATEMENT OF ESTIMATED REGULATORY COSTS AND LEGISLATIVE

RATIFICATION: The Agency has determined that this rule will not have an adverse impact on small business or likely increase directly or indirectly regulatory costs in excess of \$200,000 in the aggregate within one year after the implementation of the rule. A SERC has not been prepared by the Agency. The Agency has determined that the proposed rule is not expected to require legislative ratification based on the statement of estimated regulatory costs or if no SERC is required, the information expressly relied upon and described herein: the nature of the rule and the preliminary information and analysis conducted to date. Any person who wishes to provide information regarding the statement of estimated regulatory costs, or to provide a proposal for a lower cost regulatory alternative must do so in writing within 21 days of this notice.

RULEMAKING AUTHORITY: 379.2431(2), FS

LAW IMPLEMENTED: 379.2431(2), FS

HEARINGS WILL BE HELD BY COMMISSION STAFF AT THE DATES, TIMES AND PLACES SHOWN BELOW:

DATE AND TIME: January 27, 2015; 6:00 PM

PLACE: Treasure Island City Hall Auditorium, 120 108th Avenue, Treasure Island, FL 33706

DATE AND TIME: January 28, 2015; 6:00 PM

PLACE: Clearwater Community Sailing Association, 1001 Gulf Blvd, Clearwater, FL 33767

The final public hearing will be held by the Commission in April 2015 or later. Another notice will be published in the FAR when the date and location of the final hearing is set. The Commission's agenda for this meeting will indicate the specific day when this item is scheduled to be addressed.

Pursuant to the provisions of the Americans with Disabilities Act, any person requiring special accommodations to participate in these hearings is asked to advise the agency at least 5 days before the hearing by contacting the FWC at 850-488-6411. If you are hearing or speech impaired, please contact the agency using the Florida Relay Service, 1-800-955-8771 (TDD) or 1-800-955-8770 (Voice).

THE PERSON TO BE CONTACTED REGARDING THE PROPOSED RULE IS: Mr. Scott Calleson, Florida Fish and Wildlife Conservation Commission, Imperiled Species Management Section, 620 South Meridian Street, Tallahassee, Florida 32399-1600. Comments may be submitted by e-mail to ManateeRuleComments@MyFWC.com (please reference Pinellas County in the subject line).

THE FULL TEXT OF THE PROPOSED RULE IS:

(Substantial rewording of Rule 68C-22.016 follows. See Florida Administrative Code for present text.)

68C-22.016 Pinellas County Zones.

(1) The Commission hereby designates the waters within Pinellas County, as described below, as areas where manatee sightings are frequent and where the best available information supports the conclusion that manatees inhabit these areas on a regular or periodic basis. The primary purpose of this rule is to protect manatees from harmful collisions with motorboats and from harassment by regulating the speed and operation of motorboats within these designated areas. A secondary purpose is to protect manatee habitat. In consideration of balancing the rights of fishers, boaters, and water skiers to use the waters of the state for recreational and commercial purposes (as applicable under 379.2431(2)(k), F.S.) with the need to provide manatee protection, the Commission has examined the need for limited lanes, corridors, or unregulated areas that allow higher speeds through or within regulated areas. Such lanes, corridors, or areas are provided in those locations where the Commission determined they are consistent with manatee protection needs.

(2) The following year-round and seasonal zones are established, which include all associated and navigable tributaries, lakes, creeks, coves, bends, backwaters, canals, channels, boat basins, and other waterways unless otherwise designated or excluded. Coordinates used in the descriptions of zone boundaries are referenced to the North American Datum of 1983 (NAD83) using the HARN Florida GDL Albers projection.

(a) SLOW SPEED (year-round)

1. Anclote River, Tarpon Bayou, Spring Bayou Area: All waters east of a line that bears 46° from a point (approximate latitude 28° 9' 44.0" North, approximate longitude 82° 46' 47.6" West) on the southern shoreline of the Anclote River (about 800 feet southeast of North Florida Avenue), and west of a line that bears 346° from a point (approximate latitude 28° 9' 24.4" North, approximate longitude 82° 45' 51.6" West) on the southern shoreline of the Anclote River (about 100 feet west of Roosevelt Blvd), including all waters of Spring Bayou and Tarpon Bayou north of a line that bears 270° from a point (approximate latitude 28° 8' 45.6" North, approximate longitude 82° 45' 43.4" West) on the shoreline on the south side of the boat ramp at Craig Park, but excluding Kreamer Bayou and associated waters west and south of a line that bears 358° from a point (approximate latitude 28° 9' 26.2" North, approximate longitude 82° 46' 12.0" West) on the northern shoreline of Chesapeake Point to the southern shoreline of the peninsula that contains Bayshore Drive and North Casamia Circle;

2. Clearwater Area:

a. All waters, including the Intracoastal Waterway channel, north of the centerline of the Memorial Causeway (SR 60) Bridge, south of a line that bears 283° from a point (approximate latitude 27° 58' 29.8" North, approximate longitude 82° 48' 11.3" West) on the western shoreline of the peninsula that contains the Seminole Street boat ramp to the eastern shoreline of the island that contains Windward Island Road, and east of a line that bears 188° from a point (approximate latitude 27° 58' 23.7" North, approximate longitude 82° 48' 39.6" West) on the southern shoreline of the island that contains Windward Island Road to the northern shoreline of the Memorial Causeway;
and

b. All waters east of the marked channel of the Intracoastal Waterway, north of the aforementioned line that bears 283° from the western shoreline of the peninsula that contains the Seminole Street boat ramp and south of a line that bears 271° from a point (approximate latitude 27° 59' 20.5" North, approximate longitude 82° 47' 55.9" West) on the shoreline of the peninsula on the south side of Stevenson Creek that contains Venetian Point Drive;

3. Narrows Area: All waters outside of the marked channel of the Intracoastal Waterway (ICW) south of a line that bears 58° from a point (approximate latitude 27° 51' 52.3" North, approximate longitude 82° 50' 49.7" West) on the western shoreline of The Narrows (about 7340 feet south of the Indian Rocks Beach / Walsingham Road (SR 688) Bridge, running through green ICW channel marker 27), and north of a line that bears 83° from a point (approximate latitude 27° 51' 3.3" North, approximate longitude 82° 50' 32.4" West) on the western shoreline of The Narrows (about 350 feet south of green ICW channel marker 19);

4. Johns Pass Area: All waters of Johns Pass and Boca Ciega Bay (excluding the residential canals and side waterways of Madeira Beach and Treasure Island) east of the centerline of the Gulf Boulevard (SR 699) Bridge, and west of the following line: Begin at a point (approximate latitude 27° 47' 43.5" North, approximate longitude 82° 46'

49.5" West) on the eastern shoreline of the island that contains Johns Pass Avenue, then bear 96° for a distance of approximately 2310 feet to a point (latitude 27° 47' 41.0" North, longitude 82° 46' 23.9" West) in the water near to the northeast of Little Bird Key, then bear 135° for a distance of approximately 3095 feet to another point (approximate latitude 27° 47' 19.1" North, approximate longitude 82° 45' 59.8" West) in the water, then bear 202° to the line's terminus on the northeastern shoreline of the peninsula that contains 126th Avenue;

5. Boca Ciega Isle Area: All waters south of 55th Avenue, north of 41st Avenue, and west of the following line: Begin at a point (approximate latitude 27° 43' 51.4" North, approximate longitude 82° 44' 11.9" West) on the southeastern shoreline of the peninsula that contains Pali Way, then bear 170° for a distance of approximately 2400 feet to a point (approximate latitude 27° 43' 28.0" North, approximate longitude 82° 44' 7.6" West) in the water northwest of Boca Ciega Isle, then bear 123° for a distance of approximately 290 feet to another point (approximate latitude 27° 43' 26.4" North, approximate longitude 82° 44' 4.9" West) in the water, then bear 50° for a distance of approximately 2510 feet to a point (approximate latitude 27° 43' 42.1" North, approximate longitude 82° 43' 43.2" West) in the water north of Boca Ciega Isle (west of red Intracoastal Waterway channel marker 30), then bear 155° for a distance of approximately 2430 feet to a point (approximate latitude 27° 43' 20.1" North, approximate longitude 82° 43' 32.1" West) in the water (west of green Intracoastal Waterway channel marker 29), then bear 198° to the line's terminus on the eastern shoreline of the peninsula that contains 41st Avenue;

6. Broadwater Area: All waters in the canal system between 42nd Avenue South and 46th Avenue South, east of a line that bears 12° from a point (approximate latitude 27° 43' 50.9" North, approximate longitude 82° 41' 33.8" West) on the shoreline of the peninsula that contains 45th Street South; and all waters of the canal system between 48th Avenue South and 49th Avenue South, east of a line that bears 191° from a point (approximate latitude 27° 43' 30.1" North, approximate longitude 82° 41' 40.6" West) on the shoreline of the peninsula that contains 48th Street South;

7. Indian Key, Frenchman Creek Area: All waters of Frenchman Creek; and all waters north of Indian Key and a line that bears 66° from a point (approximate latitude 27° 42' 16.0" North, approximate longitude 82° 41' 5.3" West) on the eastern shoreline of Indian Key to a point (approximate latitude 27° 42' 22.1" North, approximate longitude 82° 40' 49.7" West) on the eastern shoreline of Boca Ciega Bay, south of 62nd Avenue South and a line that bears 81° from a point (approximate latitude 27° 42' 38.3" North, approximate longitude 82° 41' 33.2" West) on the eastern shoreline of the peninsula that contains 62nd Avenue South, and east of a line beginning at a point (approximate latitude 27° 42' 8.4" North, approximate longitude 82° 41' 52.5" West) in the water approximately 120 feet west of Indian Key, then bearing 15° for a distance of approximately 1350 feet to a point (approximate latitude 27° 42' 21.2" North, approximate longitude 82° 41' 48.4" West) in the water, then bearing 355° to the line's terminus on the southwestern shoreline of the peninsula that contains 62nd Avenue South, excluding those water within 200 feet of said peninsula west of a line that bears 150° from a point (approximate latitude 27° 42' 37.1" North, approximate longitude 82° 41' 34.1" West) on the southern shoreline;

8. Fort De Soto Area: All waters of Mullet Key Bayou and associated waters east and north of Anderson Boulevard, west of Pinellas Bayway South, and south of a line that bears 358° from a point (approximate latitude 27° 38' 36.4" North, approximate longitude 82° 43' 52.5" West) on the northern shoreline of Mullet Key to a point (latitude 27° 38' 39.2" North, longitude 82° 43' 52.5" West) in the water then bears 85° to a point (approximate latitude 27° 38' 42.2" North, approximate longitude 82° 43' 5.6" West) on the western shoreline of Madeline Key (southwest of the boat ramps).

(b) SLOW SPEED (April 1 – November 15)

1. Safety Harbor Area: All waters south and east of the centerline of the SR 580 Bridge and inshore of the following line: Begin at a point (approximate latitude 28° 0' 8.2" North, approximate longitude 82° 40' 43.2" West) on the western shoreline of Old Tampa Bay, then bear 80° for a distance of approximately 1620 feet to a point (approximate latitude 28° 0' 10.8" North, approximate longitude 82° 40' 25.3" West) in the water, then bear 12° for a distance of approximately 1245 feet to a point (approximate latitude 28° 0' 22.8" North, approximate longitude 82° 40' 22.2" West) in the water, then bear 333° for a distance of approximately 1055 feet to a point (approximate latitude 28° 0' 32.2" North, approximate longitude 82° 40' 27.4" West) in the water, then bear 321° for a distance of approximately 2920 feet to a point (approximate latitude 28° 0' 54.8" North, approximate longitude 82° 40' 47.7" West) in the water, then bear 335° for a distance of approximately 1990 feet to a point (approximate latitude 28° 1' 12.7" North, approximate longitude 82° 40' 56.8" West) in the water, then bear 348° for a distance of approximately 1650 feet to a point (approximate latitude 28° 1' 28.7" North, approximate longitude 82° 41' 0.5" West) in the water, then bear 41° for a distance of approximately 1560 feet to a point (approximate latitude 28° 1' 40.2" North, approximate longitude 82° 40' 48.8" West) in the water, then bear 79° for a distance of approximately 2125 feet to a point (approximate latitude 28° 1' 44.1" North, approximate longitude 82° 40' 25.5" West) in the water, then bear 101° for a distance of approximately 905 feet to a point (approximate latitude 28° 1' 42.3" North, approximate

longitude 82° 40' 15.6" West) in the water, then bear 139° for a distance of approximately 1280 feet to a point (approximate latitude 28° 1' 32.7" North, approximate longitude 82° 40' 6.4" West) in the water, then bear 172° for a distance of approximately 635 feet to a point (approximate latitude 28° 1' 26.4" North, approximate longitude 82° 40' 5.4" West) in the water, then bear 190° for a distance of approximately 1750 feet to a point (approximate latitude 28° 1' 9.4" North, approximate longitude 82° 40' 9.0" West) in the water, then bear 201° for a distance of approximately 555 feet to a point (approximate latitude 28° 1' 4.3" North, approximate longitude 82° 40' 11.3" West) in the water, then bear 183° for a distance of approximately 1035 feet to a point (approximate latitude 28° 0' 54.1" North, approximate longitude 82° 40' 12.0" West) in the water, then bear 168° for a distance of approximately 705 feet to a point (approximate latitude 28° 0' 47.3" North, approximate longitude 82° 40' 10.4" West) in the water, then bear 143° for a distance of approximately 715 feet to a point (approximate latitude 28° 0' 41.6" North, approximate longitude 82° 40' 5.6" West) in the water, then bear 164° for a distance of approximately 1610 feet to a point (approximate latitude 28° 0' 26.3" North, approximate longitude 82° 40' 0.9" West) in the water, then bear 174° for a distance of approximately 1205 feet to a point (approximate latitude 28° 0' 14.4" North, approximate longitude 82° 39' 59.6" West) in the water, then bear 88° for a distance of approximately 870 feet to the line's terminus on the eastern shoreline of Safety Harbor;

2. North of Courtney Campbell Causeway: All waters north of Courtney Campbell Causeway, south of a line that bears 80° from a point (approximate latitude 28° 0' 8.2" North, approximate longitude 82° 40' 43.2" West) on the western shoreline of Old Tampa Bay, and west of the following line: Begin at a point (approximate latitude 27° 57' 46.2" North, approximate longitude 82° 41' 8.4" West) on the northern shoreline of the Courtney Campbell Causeway, then bear 13° for a distance of approximately 2825 feet to a point (approximate latitude 27° 58' 13.3" North, approximate longitude 82° 41' 1.0" West) in the water, then bear 28° for a distance of approximately 2000 feet to a point (approximate latitude 27° 58' 30.6" North, approximate longitude 82° 40' 50.2" West) in the water, then bear 327° for a distance of approximately 1310 feet to a point (approximate latitude 27° 58' 41.6" North, approximate longitude 82° 40' 58.0" West) in the water, then bear 346° for a distance of approximately 2840 feet to a point (approximate latitude 27° 59' 8.9" North, approximate longitude 82° 41' 5.2" West) in the water, then bear 5° for a distance of approximately 680 feet to a point (approximate latitude 27° 59' 15.6" North, approximate longitude 82° 41' 4.4" West) in the water, then bear 36° for a distance of approximately 4410 feet to a point (approximate latitude 27° 59' 50.8" North, approximate longitude 82° 40' 35.3" West) in the water, then bear 29° for a distance of approximately 1365 feet to a point (approximate latitude 28° 0' 2.5" North, approximate longitude 82° 40' 27.7" West) in the water, then bearing 13° for a distance of approximately 870 feet to the line's terminus on the aforementioned line that bears 80° from a point on the western shoreline of Old Tampa Bay.

(c) SLOW SPEED (April 1 – October 31)

1. Indian Rocks Beach Area: All waters south of a line that bears 114° from a point (approximate latitude 27° 54' 29.1" North, approximate longitude 82° 50' 6.3" West) on the shoreline of the peninsula that contains Harbor Drive North to the western shoreline of the island that contains Buttonwood Lane, and north of the centerline of the Indian Rocks Beach / Walsingham Road (SR 688) Bridge, including the waters of McKay Creek west of the centerline of Indian Rocks Road, but excluding the marked channel of the Intracoastal Waterway and the following areas:

a. The basin between 20th Avenue and Harbor Drive, west of a line that bears 6° from a point (approximate latitude 27° 54' 17.4" North, approximate longitude 82° 50' 31.9" West) on the shoreline of the peninsula that contains 20th Avenue Parkway; and

b. The basins between 12th Avenue and 20th Avenue, west of a line that bears 46° from a point (approximate latitude 27° 53' 51.2" North, approximate longitude 82° 50' 26.1" West) on the shoreline of the peninsula that contains 12th Avenue to the shoreline of the peninsula that contains 20th Avenue;

2. Redington Shores Area: All waters east of a line that bears 189° from a point (approximate latitude 27° 50' 4.1" North, approximate longitude 82° 49' 49.8" West) on the southern shoreline of Conch Key (about 250 feet east of red Intracoastal Waterway channel marker 4), west of the peninsula that contains Oakhurst Drive, and north of the following line: Begin at the southern terminus of the aforementioned line from Conch Key, then run approximately 1500 feet east along the northern shoreline of the peninsula that contains 182nd Avenue East to the easternmost point (approximate latitude 27° 49' 56.0" North, approximate longitude 82° 49' 35.7" West) of the peninsula, then bear 28° for a distance of approximately 600 feet to a point (approximate latitude 27° 50' 1.1" North, approximate longitude 82° 49' 32.6" West) in the water on the northern boundary of the marked channel of the Intracoastal Waterway (about 230 feet east of red Intracoastal Waterway channel marker 2), then bear 118° for a distance of approximately 2050 feet to red Intracoastal Waterway channel marker 24 (approximate latitude 27° 49' 51.4" North, approximate longitude 82° 49' 12.5" West), then bear 102° to a point (approximate latitude 27° 49' 47.3" North, approximate longitude 82° 48' 52.5" West) on the northwestern shoreline of the large unnamed island south of Boca Ciega

Millennium Park, then run along the northern and eastern shorelines of said island to a point (approximate latitude 27° 49' 40.2" North, approximate longitude 82° 48' 46.0" West) on its southeastern shoreline, then bear 113° to a point (approximate latitude 27° 49' 34.5" North, approximate longitude 82° 48' 31.2" West) on the northwestern shoreline of the unnamed island to the southeast, then run along the northern and eastern shorelines of said island to a point (approximate latitude 27° 49' 28.8" North, approximate longitude 82° 48' 24.1" West) on its southeastern shoreline, then bear 129° to the line's terminus at a point on the western shoreline of the peninsula that contains Oakhurst Drive;

3. West of War Veteran's Memorial Park: All waters north of a line that bears 131° from a point (approximate latitude 27° 48' 37.5" North, approximate longitude 82° 47' 16.2" West) on the shoreline of Boca Ciega Bay near Madeira Beach Elementary School and runs approximately 6225 feet to a point (latitude 27° 47' 56.8" North, longitude 82° 46' 24.1" West) in the water then bears 83° to a point (approximate latitude 27° 47' 57.8" North, approximate longitude 82° 46' 13.6" West) on the western shoreline of Turtlecraw Point in War Veteran's Memorial Park, excluding the basin east of Bay Pines Terrace;

4. Long Bayou, Dog Leg Key Area: All waters east of the following line: Begin at a point (latitude 27° 48' 6.1" North, longitude 82° 45' 52.7" West) in the water west of Dog Leg Key and east of Bay Pines channel marker 16, then bear 176° for a distance of approximately 325 feet to another point (approximate latitude 27° 48' 2.9" North, approximate longitude 82° 45' 52.5" West) in the water, then bear 143° for a distance of approximately 3130 feet to Jungle Beach channel marker 7 (approximate latitude 27° 47' 37.9" North, approximate longitude 82° 45' 31.8" West), then bear 154° for a distance of approximately 1580 feet to another point (approximate latitude 27° 47' 23.8" North, approximate longitude 82° 45' 24.3" West) in the water, then bear 141° to the line's terminus at a point (approximate latitude 27° 47' 18.6" North, approximate longitude 82° 45' 19.7" West) in the water approximately 315 feet west of the eastern shoreline of Boca Ciega Bay just to the north of the Jungle Prada boat ramp, south of the following line: Begin at a point (approximate latitude 27° 48' 9.2" North, approximate longitude 82° 45' 27.4" West) on the eastern shoreline of Long Bayou (near 33rd Avenue North), then bear 260° to the easternmost point of Dog Leg Key, then run along the southern shoreline of Dog Leg Key to its westernmost point, then bear approximately 257° for a distance of approximately 370 to the line's terminus at the aforementioned point in the water east of Bay Pines channel marker 16, and north of a line that bears 275° from a point (approximate latitude 27° 47' 18.3" North, approximate longitude 82° 45' 16.2" West) on the eastern shoreline of Boca Ciega Bay just to the north of the Jungle Prada boat ramp;

5. North of Treasure Island Causeway: All waters south of a line that bears 275° from a point (approximate latitude 27° 47' 18.3" North, approximate longitude 82° 45' 16.2" West) on the eastern shoreline of Boca Ciega Bay just to the north of the Jungle Prada boat ramp, north of the centerline of the Treasure Island / Central Avenue Bridge, and west of the following line: Begin at a point (approximate latitude 27° 47' 18.6" North, approximate longitude 82° 45' 19.7" West) in the water approximately 315 feet west of the eastern shoreline of Boca Ciega Bay just to the north of the Jungle Prada boat ramp, then bear 190° for a distance of approximately 1585 feet to another point (approximate latitude 27° 47' 3.2" North, approximate longitude 82° 45' 23.0" West) in the water, then bear 152° for a distance of approximately 3450 feet to a point (approximate latitude 27° 46' 32.9" North, approximate longitude 82° 45' 5.4" West) in the water northeast of Intracoastal Waterway channel marker 16, then bear approximately 183° for a distance of approximately 1330 feet to a point (approximate latitude 27° 46' 19.8" North, approximate longitude 82° 45' 6.5" West) in the water (corresponding to the current northeast corner of a state boating safety zone), then bear 179° to the line's terminus on the Treasure Island Causeway;

6. 79th Street South, South Pasadena Area: All waters south of a line that bears 231° from a point (approximate latitude 27° 45' 44.4" North, approximate longitude 82° 44' 30.1" West) on the eastern shoreline of Boca Ciega Bay (near the southwesterly extension of Villa Grande Avenue South) to the eastern shoreline of the peninsula that contains 9th Avenue South (including those waters in the basin between 9th Avenue South and 10th Avenue South and in the basin between 10th Avenue South and 79th Street South), and north of the following line: Begin at a point (approximate latitude 27° 45' 18.1" North, approximate longitude 82° 45' 2.6" West) on the southern shoreline of the peninsula that contains the southernmost section of 79th Street South, then bear 134° to the northernmost point (approximate latitude 27° 45' 16.4" North, approximate longitude 82° 45' 0.7" West) of Deadman Key, then bear 92° to a point (approximate latitude 27° 45' 15.6" North, approximate longitude 82° 44' 42.9" West) on the northwestern shoreline of the peninsula that contains Sun Island Drive South, then run along the northern shoreline of said peninsula to a point (approximate latitude 27° 45' 15.6" North, approximate longitude 82° 44' 40.1" West) on its northeastern shoreline, then bear 93° to a point (approximate latitude 27° 45' 15.3" North, approximate longitude 82° 44' 36.1" West) on the northwestern shoreline of the peninsula that contains Bay Island Drive South, then run along the northern shoreline of said peninsula to a point (approximate latitude 27° 45' 15.2" North, approximate longitude

82° 44' 33.5" West) on its northeastern shoreline, then bear 90° to the line's terminus on the eastern shoreline of Boca Ciega Bay (about 250 feet north of Huffman Way);

7. Pasadena Avenue Area:

a. All waters, including the Intracoastal Waterway channel, south of a line that bears 261° from a point (approximate latitude 27° 45' 22.4" North, approximate longitude 82° 45' 18.9" West) on the shoreline of the peninsula that contains 13th Avenue South, north and west of the centerline of the Pasadena Avenue South (SR 693) Bridge, and west of a line that bears 134° from a point (approximate latitude 27° 45' 18.1" North, approximate longitude 82° 45' 2.6" West) on the southern shoreline of the peninsula that contains the southernmost section of 79th Street South to the northernmost point (approximate latitude 27° 45' 16.4" North, approximate longitude 82° 45' 0.7" West) of Deadman Key, excluding the basin between 79th Street South and 80th Street South; and

b. All waters, including the Intracoastal Waterway channel, east and south of the centerline of the Pasadena Avenue South (SR 693) Bridge, south of a line that bears 100° from a point (approximate latitude 27° 44' 50.5" North, approximate longitude 82° 44' 43.7" West) on the southeastern shoreline of Deadman Key to a point (approximate latitude 27° 44' 47.3" North, approximate longitude 82° 44' 24.0" West) on the western shoreline of Pasadena Isle and then runs along the southern shoreline of said isle to a point (approximate latitude 27° 44' 37.3" North, approximate longitude 82° 44' 5.2" West) on its southern shoreline, and north and west of a line that bears 178° from the aforementioned point on the southern shoreline of Pasadena Isle for a distance of approximately 300 feet to a point (latitude 27° 44' 34.3" North, longitude 82° 44' 5.2" West) in the water southeast of South Pasadena Marina channel marker 2 and then bears 229° to a point (approximate latitude 27° 44' 25.7" North, approximate longitude 82° 44' 16.8" West) on the eastern shoreline of the peninsula that contains 64th Avenue;

8. Pasadena Golf Club Area: All waters of Bear Creek west and south of La Plaza Avenue South; and all waters east of the centerline of the Shore Drive South Bridge to Pasadena Isle, and north of the following line: Begin at a point (approximate latitude 27° 44' 37.3" North, approximate longitude 82° 44' 5.2" West) on the southern shoreline of Pasadena Isle, then bear 178° for a distance of approximately 300 feet to a point (latitude 27° 44' 34.3" North, longitude 82° 44' 5.2" West) in the water southeast of South Pasadena Marina channel marker 2, then bear 139° for a distance of approximately 1490 feet to a point (approximate latitude 27° 44' 23.1" North, approximate longitude 82° 43' 54.4" West) in the water (east of red Intracoastal Waterway channel marker 34), then bear 99° for a distance of approximately 2590 feet to a point (approximate latitude 27° 44' 19.0" North, approximate longitude 82° 43' 25.9" West) in the water south of Kipps Colony, then bear 36° to the line's terminus on the southwestern shoreline of the peninsula that contains Bayview Circle South;

9. Isle Del Sol Area: All waters west of the Pinellas Bayway South, north of a line that bears 311° from a point (approximate latitude 27° 41' 42.8" North, approximate longitude 82° 43' 1.4" West) on the western shoreline of the Pinellas Bayway South Causeway to a point (latitude 27° 41' 58.1" North, longitude 82° 43' 21.0" West) in the water (northeast of red Intracoastal Waterway channel marker 24), and east of a line bearing 8° from said point in the water east of channel marker 24 to a point (approximate latitude 27° 42' 12.8" North, approximate longitude 82° 43' 18.3" West) on the southern shoreline of Isle Del Sol;

10. Tierra Verde Area: All waters south of a line that bears 108° from a point (approximate latitude 27° 40' 57.5" North, approximate longitude 82° 43' 8.6" West) on the eastern shoreline of Paradise Key, west of a line that bears 179° from a point (approximate latitude 27° 40' 33.3" North, approximate longitude 82° 41' 47.3" West) in the water northwest of Tarpon Key to a point (approximate latitude 27° 39' 28.0" North, approximate longitude 82° 41' 47.0" West) in the water on the northern boundary of the marked channel in Bunces Pass, north of the marked channel in Bunces Pass, and east of the Pinellas Bayway South, excluding the canals north of 13th Street East and the deeper water area bounded on the east by a line that bears 182° from a point (approximate latitude 27° 40' 55.5" North, approximate longitude 82° 43' 1.9" West) in the water south of Little Bird Key to a point (approximate latitude 27° 40' 24.5" North, approximate longitude 82° 43' 3.5" West) in the water east of 13th Street East and bounded on the south by a line that bears 107° from a point (approximate latitude 27° 40' 26.4" North, approximate longitude 82° 43' 10.0" West) on the shoreline of the peninsula that contains 13th Street East to the aforementioned point in the water east of 13th Street East.

(d) SLOW SPEED (November 15 – March 31) – Whitcomb Bayou Area: All waters of Whitcomb Bayou south of a line that bears 270° from a point (approximate latitude 28° 8' 45.6" North, approximate longitude 82° 45' 43.4" West) on the shoreline on the south side of the boat ramp at Craig Park.

(3) Maps depicting the zones described in this rule are available on the agency's website at <http://myfwc.com>. The maps are intended only as visual aids and do not have regulatory effect; therefore, in the event of conflict between the maps and the descriptions of the zones provided by this rule, the rule text shall prevail.

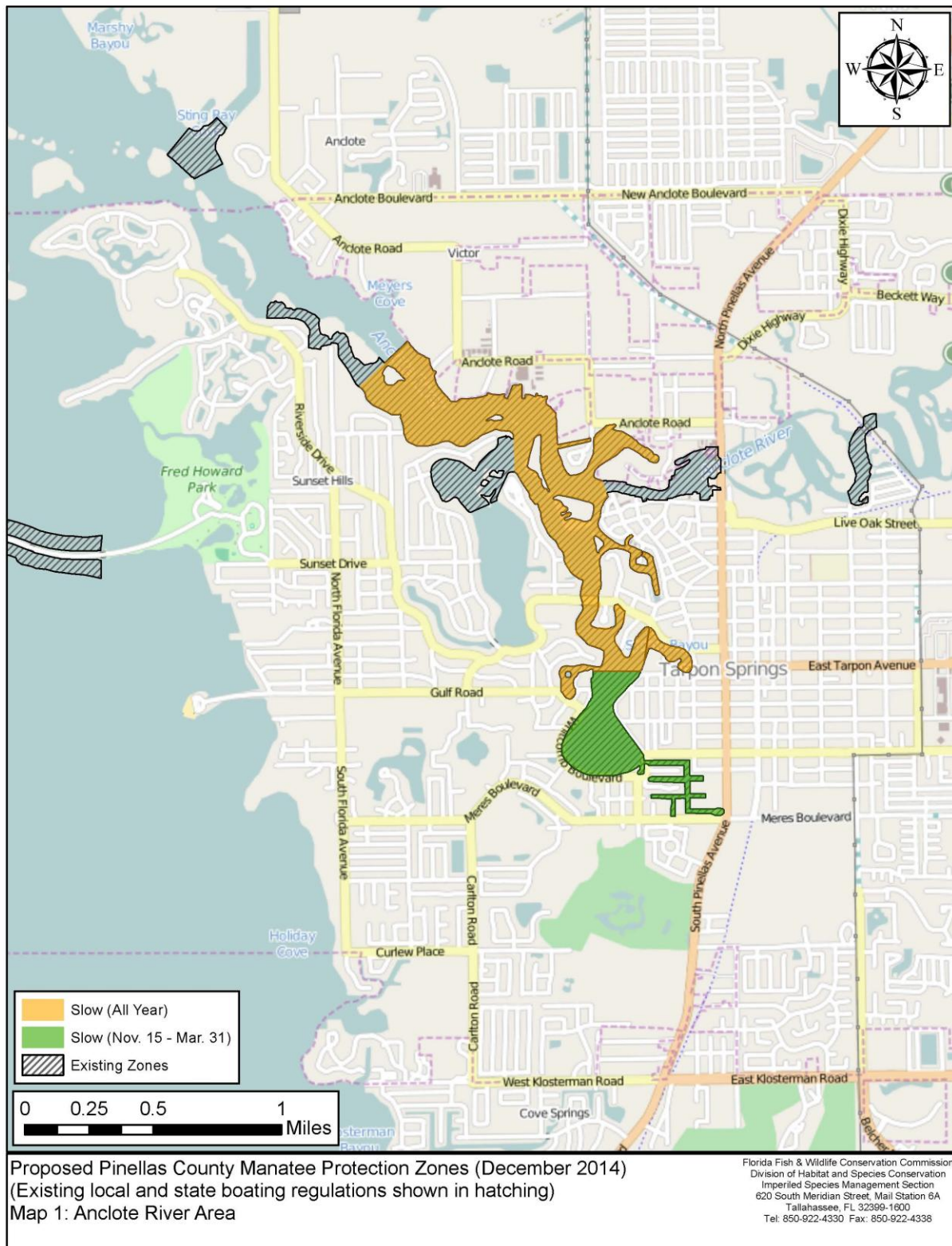
Rulemaking Authority 379.2431(2) ~~370.12(2)(n)~~ FS. Law Implemented 379.2431(2) ~~370.12(2)(d), (k), (n)~~ FS. History—New 1-5-05, Amended _____.

NAME OF PERSON ORIGINATING PROPOSED RULE: Mr. Thomas Eason, Director of the Division of Habitat and Species Conservation

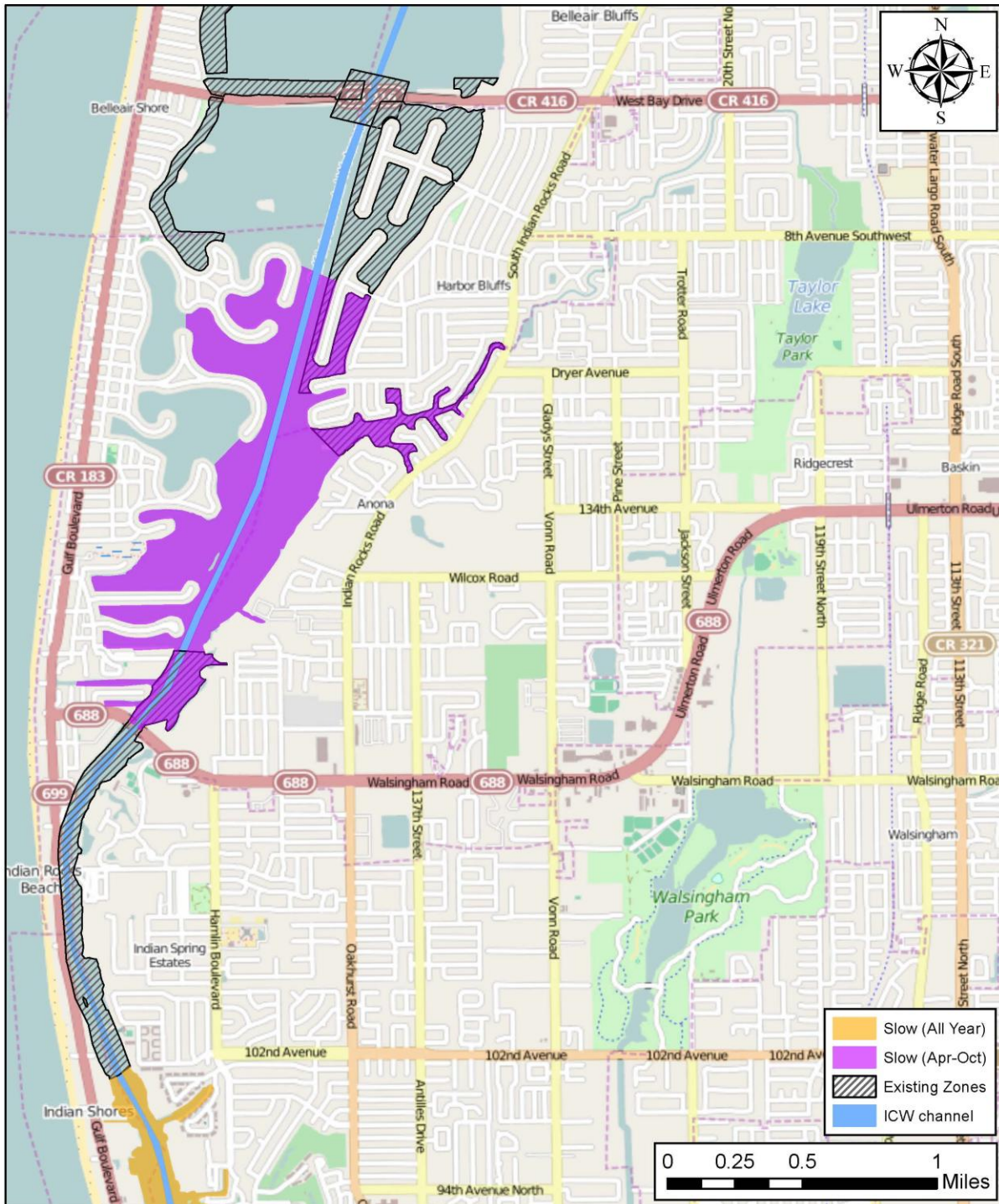
NAME OF AGENCY HEAD WHO APPROVED THE PROPOSED RULE: Commissioners of the Florida Fish and Wildlife Conservation Commission

DATE PROPOSED RULE APPROVED BY AGENCY HEAD: November 20, 2014

DATE NOTICE OF PROPOSED RULE DEVELOPMENT PUBLISHED IN FAR: September 10, 2014







Proposed Pinellas County Manatee Protection Zones (December 2014)
 (Existing local and state boating regulations shown in hatching)
 Map 3: Indian Rocks Beach Area

Florida Fish & Wildlife Conservation Commission
 Division of Habitat and Species Conservation
 Imperiled Species Management Section
 620 South Meridian Street, Mail Station 6A
 Tallahassee, FL 32399-1600
 Tel: 850-922-4330 Fax: 850-922-4338

