

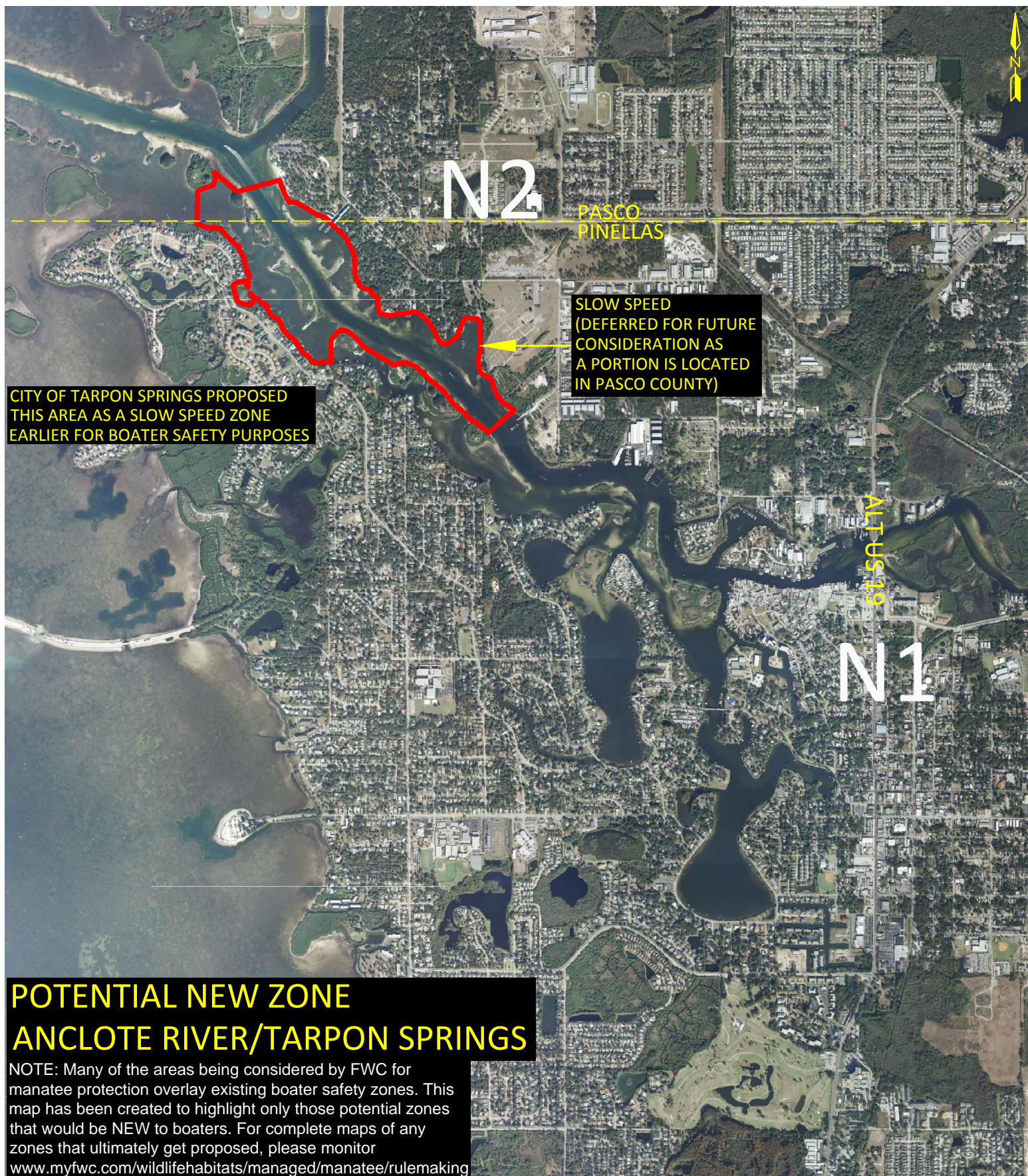
## **A NOTE ON THE FOLLOWING MAPS**

Many of the areas being considered for manatee protection zones overlap existing boater safety zones. The following maps were drafted to highlight those areas where potential manatee protection zones would NOT overlap existing speed zones. Full maps can be reviewed in the "*FWC response to LRRC and Maps of Potential Zones*" which can be found on the County's webpage: [www.pinellascounty.org/StateManateePlan](http://www.pinellascounty.org/StateManateePlan). The following maps can be used if you wish to review only those speed zones that would be new to boaters. They also include some notes on some of the compromises that were made based on comments from the Local Rule Review Committee, citizens, municipal officials, and law enforcement.

Here are some additional statistics pulled from the FWC report that may be of help.

- The total area of inshore waters in Western Pinellas County is 53,132 acres.
- The total area presented to the LRRC as "of concern" was 7,147 acres.
- The total area being considered for potential manatee protection zones is 6,144 acres (11.6% of the inshore waters).
- The total area of potential manatee protection zones that would be new to boaters (i.e. that DO NOT overlap existing boater safety speed zones) is 4,339 acres (8.2% of the inshore waters).
- The total length of the Intracoastal Waterway (ICW) in the County is 46.4 miles.
- There are 8.2 miles of existing boater safety speed zones on the ICW.
- There are 0.5 miles of new speed zone (during the warm season only) being considered for the ICW.





CITY OF TARPON SPRINGS PROPOSED  
THIS AREA AS A SLOW SPEED ZONE  
EARLIER FOR BOATER SAFETY PURPOSES

SLOW SPEED  
(DEFERRED FOR FUTURE  
CONSIDERATION AS  
A PORTION IS LOCATED  
IN PASCO COUNTY)

## POTENTIAL NEW ZONE ANCLOTE RIVER/TARPON SPRINGS

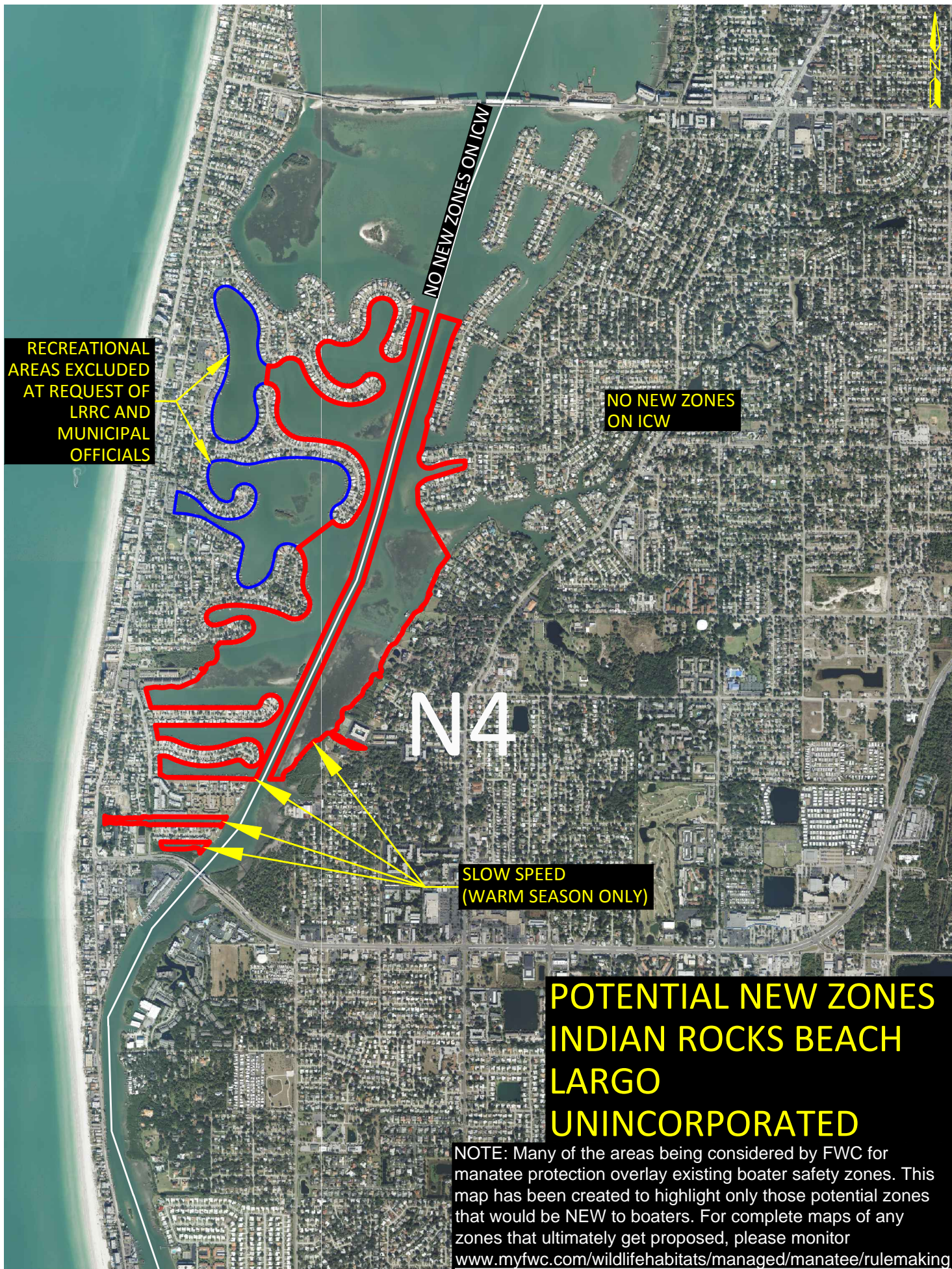
NOTE: Many of the areas being considered by FWC for manatee protection overlay existing boater safety zones. This map has been created to highlight only those potential zones that would be NEW to boaters. For complete maps of any zones that ultimately get proposed, please monitor [www.myfwc.com/wildlifehabitats/managed/manatee/rulemaking](http://www.myfwc.com/wildlifehabitats/managed/manatee/rulemaking)



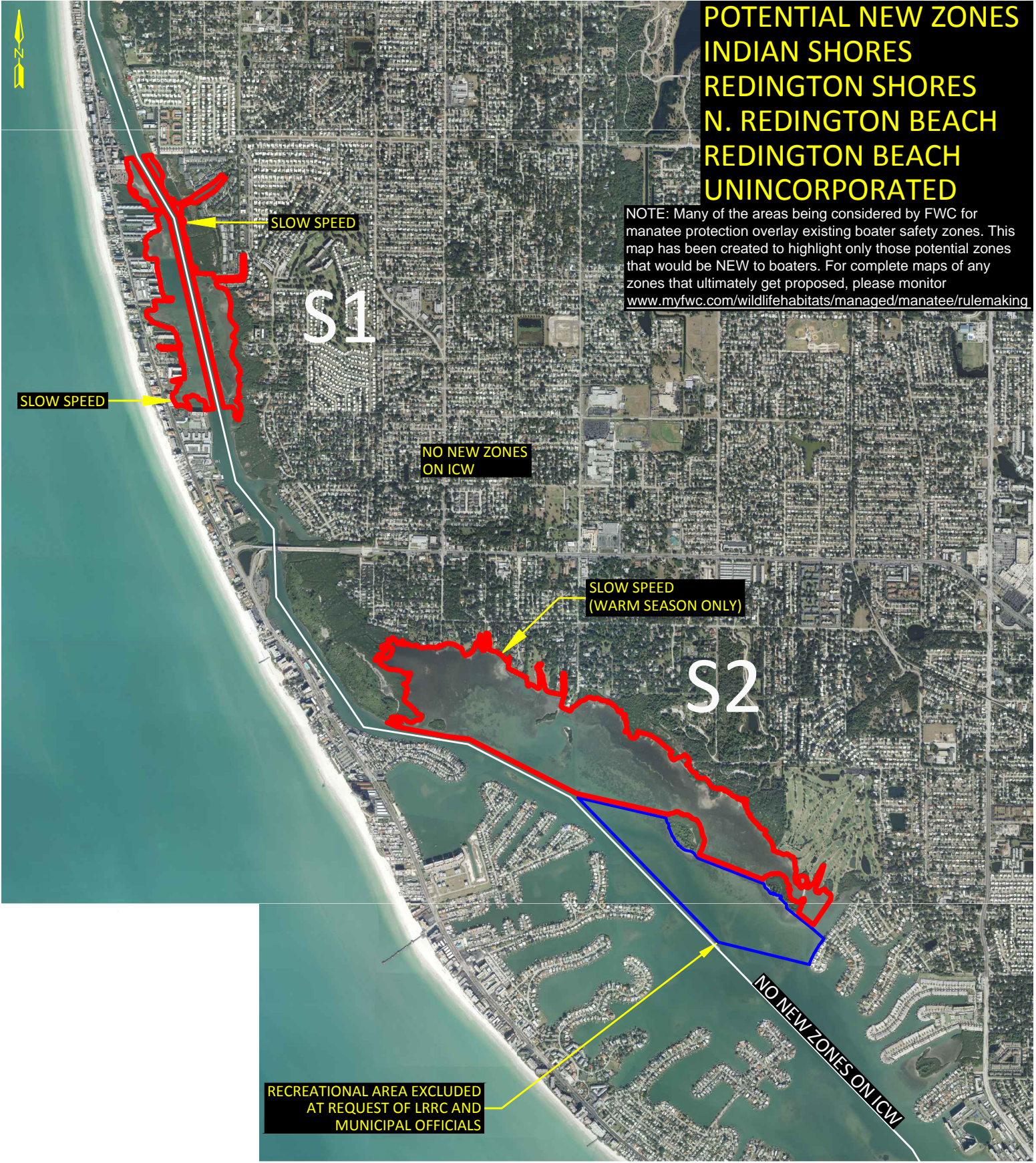
# POTENTIAL NEW ZONES CLEARWATER











POTENTIAL NEW ZONES  
INDIAN SHORES  
REDINGTON SHORES  
N. REDINGTON BEACH  
REDINGTON BEACH  
UNINCORPORATED

NOTE: Many of the areas being considered by FWC for manatee protection overlay existing boater safety zones. This map has been created to highlight only those potential zones that would be NEW to boaters. For complete maps of any zones that ultimately get proposed, please monitor [www.myfwc.com/wildlifehabitats/managed/manatee/rulemaking](http://www.myfwc.com/wildlifehabitats/managed/manatee/rulemaking)

NO NEW ZONES  
ON ICW

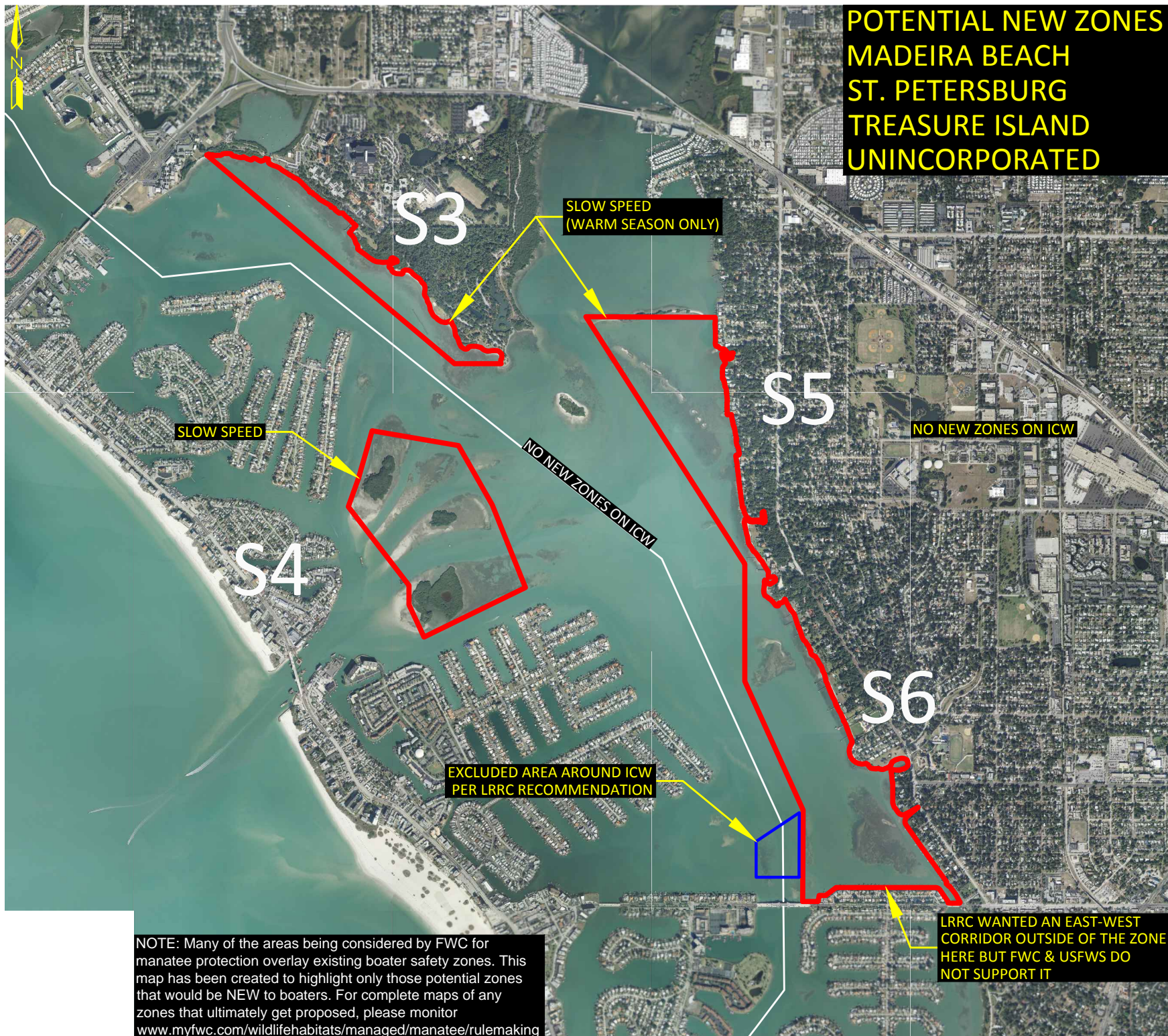
SLOW SPEED  
(WARM SEASON ONLY)

RECREATIONAL AREA EXCLUDED  
AT REQUEST OF LRRC AND  
MUNICIPAL OFFICIALS

NO NEW ZONES ON ICW



**POTENTIAL NEW ZONES  
MADEIRA BEACH  
ST. PETERSBURG  
TREASURE ISLAND  
UNINCORPORATED**



NOTE: Many of the areas being considered by FWC for manatee protection overlay existing boater safety zones. This map has been created to highlight only those potential zones that would be NEW to boaters. For complete maps of any zones that ultimately get proposed, please monitor [www.myfwc.com/wildlifehabitats/managed/manatee/rulemaking](http://www.myfwc.com/wildlifehabitats/managed/manatee/rulemaking)



**POTENTIAL NEW ZONES**  
**ST. PETERSBURG**  
**SOUTH PASADENA**  
**ST. PETE BEACH**  
**GULFPORT**  
**UNINCORPORATED**





# POTENTIAL NEW ZONES ST. PETERSBURG

NOTE: Many of the areas being considered by FWC for manatee protection overlay existing boater safety zones. This map has been created to highlight only those potential zones that would be NEW to boaters. For complete maps of any zones that ultimately get proposed, please monitor [www.myfwc.com/wildlifehabitats/managed/manatee/rulemaking](http://www.myfwc.com/wildlifehabitats/managed/manatee/rulemaking)





