

2017

RecycleToday

Pinellas County's

Guide to Resource Management



Save this guide to use year-round
or visit pinellascounty.org/recycle





Where Do YOUR Recyclables Go?

Learn what happens to the items you recycle.

After you place your items in a recycling container in Pinellas County, they are transformed into new products, saving natural resources while conserving energy, water and oil. The recycling process relies on machines to individually sort materials into bales at Material Recovery Facilities (MRFs). The graphic (page 5) describes the typical recycling process in a MRF from the arrival of the materials to where they are sorted, baled and sold to make new products. The machines must be able to recognize the item to properly sort it. If it cannot recognize the item, it is considered a recycling contaminant or a non-recyclable item in a curbside drop-off center program. *Help contribute to the success of recycling programs by recycling the correct items! **Recycle Right.***

Frequently Asked Questions

What should I do with plastic bags? First, try to reduce use of plastic bags by using reusable bags or decline taking a bag when buying only a few items. Recycle plastic bags using specifically marked containers at grocery stores. Plastic bags placed in residential recycling programs become entangled in the sorting equipment at the MRF and can shut it down. Hoses, Christmas lights, twine and plastic wrap also cause problems for processing equipment. These “tangles” and “wrappables” should be placed in the garbage. Many residents place their recyclables in a plastic bag for transport from their kitchen to the recycling container. We suggest using a reusable container for transporting. Place items LOOSE in the container for better recycling.

How can I help? Read the instruction sticker on your recycling container or look at pages 6-11 for items that local programs accept. Recycle the “right” items for your program.

If I put an item in my garbage that should be recycled, is anyone pulling it out? No. You must place the item in the recycling container for it to be recycled. However, at Pinellas County Solid Waste, aluminum, steel and tin cans, and other metals are mechanically removed from the ash after the garbage is burned as part of the recovery process. Recovered metals are sold to a scrap metal company for recycling. However, it is best to recycle your cans before the burning process to conserve energy and resources.

Do I have to wash items? No. Rinsed is fine. Empty and dry is better.

What about bottle caps? Either leave cap on or place cap in garbage.

What about Styrofoam take-out containers, plates, cups, etc.?

Unfortunately, most local MRFs do not have an end use market for Styrofoam. During processing, Styrofoam breaks apart and contaminates recyclable products. It is best to place in trash so it can be burned for energy recovery. A few stores offer specifically marked recycling containers for clean Styrofoam trays and egg cartons.

Anything else? Remember, recycle only glass bottles and jars (no mirrors, panes, drinking glasses or vases). Yard waste does not go in your curbside recycling container.

Resource Management Opportunities

77% of the incoming trash at the Solid Waste facility could easily be recycled!

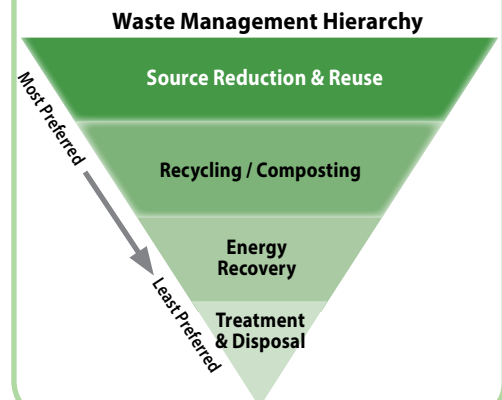


- 1 - Paper & cardboard (28.8%)
- 2 - Food (16.3%)
- 3 - Bottles & cans (8.3%)
- 4 - Construction debris (8.6%)
- 5 - Yard waste (8.5%)
- 6 - Electronics (1.8%)
- 7 - Clothing & fabric (3.6%)
- 8 - Metals (1.5%)
- 9 - Items not easily recycled (22.6%)

The pie chart is based on 2014 waste composition data for solid waste disposed of at Pinellas County Solid Waste.

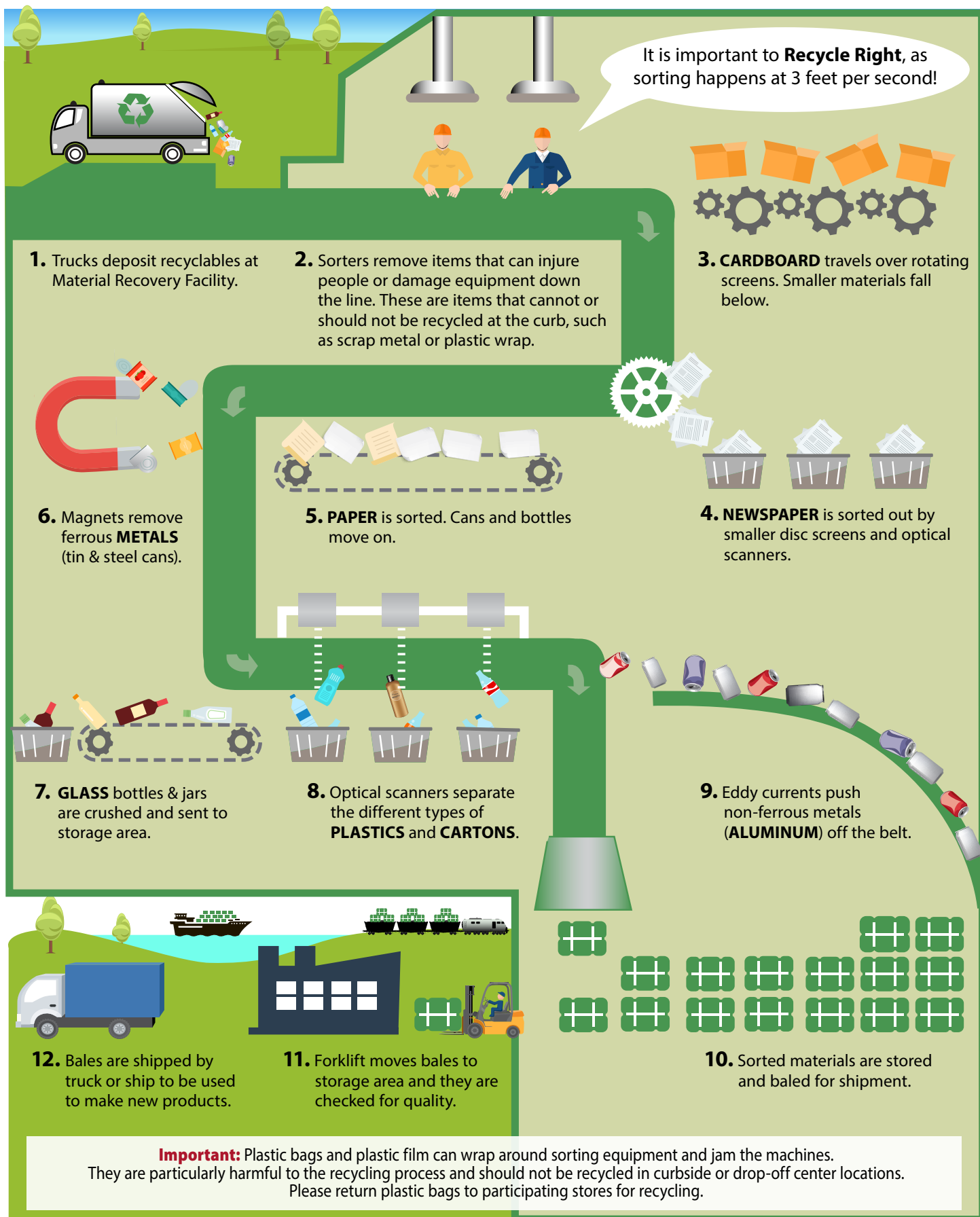
Waste Management Hierarchy

Use the graphic below to guide you to reduce the amount of your disposable waste and preserve limited landfill space.



What Happens in a Recycling Facility

Learn how recycled items go through a Material Recovery Facility (MRF).



Use the information below to determine the items accepted in municipal programs.

MUNICIPAL CONTACTS/ Curbside Recycling	SINGLE STREAM	ALUMINUM CANS	AEROSOL CANS	CARDBOARD	CARTONS	GLASS BOTTLES & JARS	MIXED PAPER	NEWSPAPER	PLASTICS #1-7	STEEL CANS	YARD WASTE	ELECTRONICS	BIN REQUEST
BELLEAIR • 588-3769 x406 • www.townofbelleair.com	✓	✓	✓	✓	✓	✓	✓	✓	✓	✓			City/588-3769 x401
BELLEAIR BEACH • 595-4646 x120 • www.cityofbelleairbeach.com	✓	✓		✓	✓	✓	✓	✓	✓	✓			City/595-4646 x120
BELLEAIR BLUFFS ¹ • 584-2151 • www.belleairbluffs.org	✓	✓		✓	✓	✓	✓	✓	✓	✓			Recycler/572-8779
BELLEAIR SHORE • 593-9296 • www.belleairshore.com	✓	✓		✓	✓	✓	✓	✓	✓	✓			Recycler/572-6800
CLEARWATER • 562-4920 • www.myclearwater.com	✓	✓	✓	✓	✓	✓	✓	✓	✓	✓	see pg.	see pg. 12	City/562-4920
DUNEDIN ² • 298-3215 x1324 • www.dunedingov.com	✓	✓	✓	✓	✓	✓	✓	✓	✓	✓	see pg.		City/298-3215
GULFPORT (two bins) • 893-1089 • www.mygulfport.us		✓		✓	✓		✓	✓	✓	✓	see pg.	see pg. 12	City/893-1089
INDIAN ROCKS BEACH • 595-6889 • www.indian-rocks-beach.com	✓	✓		✓	✓	✓	✓	✓	✓	✓	see pg.		City/595-6889
INDIAN SHORES • 595-4020 • www.myindianshores.com	✓	✓		✓	✓	✓	✓	✓	✓ no #6	✓			Recycler/572-6800
KENNETH CITY • 498-8948 • www.kennethcityfl.org	✓	✓		✓	✓	✓	✓	✓	✓	✓	see pg.		Recycler/572-6800
LARGO • 587-6760 • www.largorecycles.com	✓	✓	✓	✓	✓	✓	✓	✓	✓	✓	see pg.		City/587-6760
MADEIRA BEACH • 543-8154 • www.madeirabeachfl.gov	✓	✓		✓	✓	✓	✓	✓	✓	✓	see pg.		City/543-8154
N. REDINGTON BEACH ³ • 391-4848 • www.townofnrb.com	✓	✓		✓	✓	✓	✓	✓	✓	✓			Recycler/572-6800
OLDSMAR • 813/749-1135 • www.myoldsmar.com	✓	✓	✓	✓	✓	✓	✓	✓	✓	✓	see pg.		City/(813)855-5257
PINELLAS PARK • 369-0700 • www.pinellas-park.com	✓	✓		✓	✓	✓	✓	✓	✓	✓	see pg.		City/369-0690
REDINGTON BEACH • 391-3875 • www.townofredingtonbeach.com	✓	✓		✓	✓	✓	✓	✓	✓	✓			Recycler/572-6800
REDINGTON SHORES • 397-5538 • www.townofredingtonshores.com	✓	✓		✓	✓	✓	✓	✓	✓	✓			City/397-5538
SAFETY HARBOR • 724-1550 x2002 • www.cityofsafetyharbor.com	✓	✓		✓	✓	✓	✓	✓	✓	✓	see pg.		City/724-1550 x2002
SEMINOLE • 397-6383 x3 • www.myseminole.com	✓	✓		✓	✓	✓	✓	✓	✓	✓			City/397-6383 x3
SOUTH PASADENA • 384-0701 • www.mysouthpasadena.com	✓	✓		✓	✓	✓	✓	✓	✓	✓			Recycler/572-6800
ST. PETERSBURG • 893-7838 • www.stpete.org/recycle	✓	✓		✓	✓	✓	✓	✓	✓	✓	see pg.	see pg. 12	City/893-7838
ST. PETE BEACH • 363-9243 • www.stpetebeach.org	✓	✓		✓	✓	✓	✓	✓	✓	✓	see pg.		City/363-9243
TARPON SPRINGS • 943-4837 • www.ctsfl.us	✓	✓		✓	✓	✓	✓	✓	✓	✓	see pg.		City/943-4837
TREASURE ISLAND • 547-4575 x253 • www.mytreasureisland.org	✓	✓		✓	✓	✓	✓	✓	✓	✓	see pg.	see pg. 12	City/547-4575 x253

1. BELLEAIR BLUFFS New 64-gallon carts available for a one-time \$25 fee and \$1/month charge.

2. DUNEDIN Place furniture curbside on your collection day. No item limit, but more than two pieces will incur a charge.

3. N. REDINGTON BEACH provides “back door” recycling service.

Listed below are the recycling drop-off centers in Pinellas County operated by the 24 cities and Pinellas County Solid Waste. Locations are listed in alphabetical order by city. The location numbers correspond with the map on page 3.

MUNICIPAL AND COUNTY RECYCLING Drop-off Sites													ALUMINUM CANS	AEROSOL CANS (EMPTY, NO CAPS)	CARDBOARD	CARTONS	GLASS BOTTLES & JARS	MIXED PAPER	NEWSPAPER	PLASTICS #1-7	STEEL CANS	CLOTHING	COOKING OIL	YARD WASTE	OTHER
BELLEAIR																									
1 John J. Osborne Public Works Bldg. • 1075 Ponce de Leon Blvd.													✓	✓	✓	✓	✓	✓	✓	✓	✓				
CLEARWATER																									
2 Clearwater Solid Waste Facility • 1701 N. Hercules Ave.													✓	✓	✓	✓	✓	✓	✓	✓	✓		✓		
55 North County Service Center • 29582 U.S. 19 N. • west side, south of Curlew Rd. **													✓	✓	✓	✓	✓	✓	✓	✓	✓				
59 Sand Key Park • 1060 Gulf Blvd. * 65 Walmart • 23106 U.S. 19 N. • SE corner of parking lot **													✓	✓	✓	✓	✓	✓	✓	✓	✓				
DUNEDIN																									
3 Highlander Park Recycling Site • Ed Eckert Dr. • across from Highlander Pool													✓	✓	✓	✓	✓	✓	✓	✓	✓	✓			
4 Lake Haven Recycling Site • 817 Lake Haven Rd.													✓	✓	✓	✓	✓	✓	✓	✓	✓	✓	✓		
GULFPORT																									
5 1617 49 th St. S. • Gulfport Neighborhood Center													✓		✓	✓	✓	✓	✓	✓	✓				
INDIAN ROCKS BEACH																									
6 Brown Park • Bay Blvd. & 27 th Ave.													✓			✓	✓	✓	✓	✓	✓	✓			
7 10 th Ave. Park • corner of 10 th Ave. and Bay Pine Blvd.													✓					✓	✓	✓	✓				
8 Nature Preserve • 903 Gulf Blvd. 9 Historical House • 203 Fourth Ave.													✓					✓	✓	✓	✓				
10 Kolb Park • 1507 Bay Palm Blvd.													✓		✓	✓	✓	✓	✓	✓	✓				
INDIAN SHORES																									
11 Behind Town Hall • 19305 Gulf Blvd.													✓		✓	✓	✓	✓	✓	No #6	✓				
KENNETH CITY																									
12 Public Works Bldg. • 4600 58 th St. N.													✓		✓	✓	✓	✓	✓	✓	✓			see pg. 12	
LARGO																									
49 Bank of America • 10900 Seminole Blvd. ** 56 Hamlin Blvd. • 14644 113 th Ave. N. **													✓	✓	✓	✓	✓	✓	✓	✓	✓				
57 Pinellas County Extension • 12520 Ulmerton Rd. • N. of Ulmerton Rd. entrance on 125 th St. N. Frontage Rd. **													✓	✓	✓	✓	✓	✓	✓	✓	✓				
13 Tri-City Plaza • U.S. 19 N. & East Bay Dr. • behind Ross Store													✓	✓	✓	✓	✓	✓	✓	✓	✓				
14 Starkey Road Recycling • 1551 Starkey Rd. • north of Ulmerton Rd. south of East Bay Dr.													✓	✓	✓	✓	✓	✓	✓	✓	✓		✓		
MADEIRA BEACH																									
15 Madeira Beach Municipal Marina • 503 150 th Ave.													✓		✓	✓	✓	✓	✓	✓	✓				
PALM HARBOR - UNICORPORATED AREA OF PINELLAS COUNTY																									
51 Curlew Retention Pond • 1825 Curlew Rd. • between Belcher Rd. & C.R. 1 **													✓	✓	✓	✓	✓	✓	✓	✓	✓				
53 John Chesnut Sr. Park • SW corner of Sandy Point Road & East Lake Rd. **													✓	✓	✓	✓	✓	✓	✓	✓	✓				
60 William E. Dunn Water Reclamation Facility • 4111 Dunn Dr. off Alt U.S. 19 N. **													✓	✓	✓	✓	✓	✓	✓	✓	✓				
PINELLAS PARK																									
16 Waste Management Brush Site • 12950 40 th St. N.																								see pg. 12	
REDINGTON SHORES																									
17 Redington Shores Town Hall • 17425 Gulf Blvd.													✓		✓	✓	✓	✓	✓	✓	✓				

* Pinellas County Site open 7 a.m. to dusk ** Pinellas County Site open 24 hours a day

Listed below are the recycling drop-off centers in Pinellas County operated by the 24 cities and Pinellas County Solid Waste. Locations are listed in alphabetical order by city. The location numbers correspond with the map on page 3.

MUNICIPAL AND COUNTY RECYCLING Drop-off Sites		ALUMINUM CANS	AEROSOL CANS (EMPTY.NO CAPS)	CARDBOARD	CARTONS	GLASS BOTTLES & JARS	MIXED PAPER	NEWSPAPER	PLASTICS #1-7	STEEL CANS	CLOTHING	COOKING OIL	YARD WASTE	OTHER
SAFETY HARBOR														
18 Safety Harbor Fire Department • 3095 McMullen Booth Rd.		✓	✓	✓	✓	✓	✓	✓	✓	✓				
19 Safety Harbor Public Works • 1200 Railroad Ave.		✓	✓	✓	✓	✓	✓	✓	✓	✓				Antifreeze/motor oil
SEMINOLE														
54 Lake Seminole Park • 10015 Park Blvd. • east of Seminole Blvd. *		✓	✓	✓	✓	✓	✓	✓	✓	✓				
SOUTH PASADENA														
20 Winn Dixie • 6851 Gulfport Blvd. at Pasadena Ave. • SW corner of the store parking lot		✓		✓	✓	✓	✓	✓	✓	✓				
ST. PETERSBURG														
21 1000 62 nd Ave. N.E. 22 7750 26 th Ave. N.		✓		✓	✓	✓	✓	✓	✓	✓			see pg. 12	Appliances/mixed metal
23 2453 20 th Ave. N. 24 2500 26 th Ave. S.		✓		✓	✓	✓	✓	✓	✓	✓			see pg. 12	Appliances/mixed metal
25 4015 Dr. MLK Jr. St. S.		✓		✓	✓	✓	✓	✓	✓	✓			see pg. 12	Appliances/mixed metal
26 Crescent Lake • 1320 Fifth St. N. 27 Pinellas Bayway • 3802 54 th Ave. S.		✓		✓	✓	✓	✓	✓	✓	✓				
28 Old Sweetbay • 6095 Ninth Ave. N. • beside store		✓		✓	✓	✓	✓	✓	✓	✓				
30 Clearview United Methodist Church • 4515 38 th Ave. N.		✓		✓	✓	✓	✓	✓	✓	✓				
31 Grace Lutheran Church • 4301 16 th St. N. 32 Municipal Marina • 300 Second Ave. S.E.		✓		✓	✓	✓	✓	✓	✓	✓				
33 Enoch Davis Center • 1111 18 th Ave. S. 34 Fire Station #9 • 475 66 th St. N.		✓												
35 Kiwanis Park • 38 th Ave. N. & 18 th St. N. 36 Main Library • 3745 Ninth Ave. N.				✓			✓	✓						
37 Bay Vista Park • 7000 Fourth St. S. 38 Childs Park Sports Complex • 601 45 th St. S.		✓		✓			✓	✓						
39 Fossil Park • 6635 Dr. MLK Jr. St. N. 40 Lakewood Youth Association • 31 st St. S. & 54 th Ave. S.		✓		✓			✓	✓						
41 Northwest Park • 2331 60 th St. N.		✓		✓			✓	✓						
58 Pinellas County Solid Waste • 2855 109 th Ave. N. • next to HEC ₃ **		✓	✓	✓	✓	✓	✓	✓	✓	✓		at HEC ₃ see pg. 20	see pg. 12	
TARPON SPRINGS														
42 Between fire station & church • 1023 Gulf Rd.		✓		✓	✓	✓	✓	✓	✓	✓				
43 Yard Waste Facility • 898 S. Levis Ave.		✓		✓	✓	✓	✓	✓	✓	✓			see pg. 12	Bulk items/call city
48 A.L. Anderson Park • 39699 U.S. 19 N. • between Klosterman Rd. & Tarpon Ave. *		✓	✓	✓	✓	✓	✓	✓	✓	✓				
50 Brooker Creek Education Center • 3940 Keystone Rd. *		✓	✓	✓	✓	✓	✓	✓	✓	✓				
TIERRE VERDE														
66 Ft. De Soto Park • 3222 Pinellas Bayway S. • in boat ramp overflow parking area **		✓	✓	✓	✓	✓	✓	✓	✓	✓				
TREASURE ISLAND														
44 Isle of Capri • Rosselli Park Capri Circle S. & Second St. E.		✓	✓	✓	✓	✓	✓	✓	✓	✓				
45 Downtown, Public Works at City Hall • 120 108 th Ave.		✓	✓	✓	✓	✓	✓	✓	✓	✓				
46 Paradise Island, Treasure Bay • 10315 Paradise Blvd.		✓	✓	✓	✓	✓	✓	✓	✓	✓				
47 Sunset Beach • West Gulf Blvd. at 82 nd Ave.		✓	✓	✓	✓	✓	✓	✓	✓	✓				

* Pinellas County Site open 7 a.m. to dusk ** Pinellas County Site open 24 hours a day



Yard Waste/Electronics: Curbside/Drop-off Info

Some municipalities in Pinellas County provide curbside yard waste collection. Yard waste must be set to the curb separate from the garbage and meet the requirements below. If a municipality is not listed, it does not provide this service and yard waste should be taken to a yard waste processing center, brought to Pinellas County Solid Waste (for a fee/ details listed below) or put in the garbage. Yard waste should not be placed in residential recycling.

Yard Waste

All Pinellas County Residents – **Drop-off:**

Pinellas County Solid Waste (3095 114th Ave. N., St. Petersburg). Mon.–Fri., 6 a.m. – 6 p.m., Sat., 7 a.m. – 5 p.m. Closed Sundays. For holiday closings, hours and fees, visit www.pinellascounty.org/solidwaste.

Clearwater – **Curbside:** For loose items, use bags or non-city garbage cans (up to 32 gallons). Cut limbs not to exceed 4" in diameter into 4' lengths and bundle. Do not put yard waste in black or blue barrel. Place curbside on collection day.

Dunedin – **Curbside:** Place loose grass clippings and leaves in 32-gallon cans or bags no more than 50 lbs. Cut, tie and bundle brush materials into 4' lengths and put into manageable bundles no more than 50 lbs. each. Not to exceed 4 cubic yards. Place curbside on collection day.

Gulfport – **Curbside:** Place a single pile of loose brush at the curb or alley for free pickup on Wednesdays. Pile cannot exceed 4' long x 4' wide x 3.5' high. Tree limbs cannot be larger than 4" in diameter. Use bags for leaves. Call city for pick up of bagged leaves and larger piles.

Indian Rocks Beach – **Curbside:** Place loose yard waste in a container or pile (no bags). (Brush not to exceed 4' in length or 6" in diameter) curbside on Wednesdays.

Kenneth City – **Curbside:** Limited yard waste recycling. Yard debris, resident produced and capable of being run through a chipper, for a fee. Check www.kennethcityfl.org for requirements.

Largo – **Curbside:** Place branches, bagged leaves and grass on your recycling day in a bundle or bag. No yard waste in green or blue carts.

Madeira Beach – **Curbside:** Cut brush into 4' lengths and place at the curb on Wednesdays. Brush piles cannot exceed 4' in height or 8' in length. No bags or garbage cans. No grass clippings or leaves.

Oldsmar – **Curbside:** On garbage collection days, place loose grass clippings and leaves in cans or bags, not to exceed 32 gallons (up to 50 lbs.). Brush materials must be tied, stacked and cut not to exceed 6" in diameter and 4' in length (up to 50 lbs.).

Pinellas Park – **Drop-off:** Take yard waste to Waste Management Brush Site (12950 40th St. N.). Show proof of residency such as a utility bill. Drop off loose brush not exceeding 4' in length. Open daily 7:30 a.m. – 4:30 p.m.

Safety Harbor – **Curbside:** On Wednesday, place loose items in unlined cans not to exceed 32 gallons. Cut limbs not exceeding 6" in diameter into 4' lengths, bundle with twine, and stack at the curb. Limit eight cans or bundles. No bags.

St. Petersburg – **Drop-off:** Take yard waste to one of the city's four Recycling and Brush Sites open Mon.–Fri., 9 a.m. – 5:30 p.m., Sat.–Sun., 8 a.m. – 5:30 p.m. Locations listed on page 13. Show proof of residency such as a utility bill. Logs should not exceed 4' in length or weigh over 300 lbs. For more information, visit www.stpete.org/brushsites.

St. Pete Beach – **Curbside:** Bundle with twine. No single bundle to exceed 40 lbs. No branches over 4' long. Place curbside on your collection day.

Tarpon Springs – **Curbside:** Use bio-degradable bags, bundles, or loose in 32-gallon containers not exceeding 50 lbs. (no loose brush). Branches not to exceed 4" in diameter or 4' in length. Monday collection for residents west of Pinellas Ave. and Thursday collection for residents east of Pinellas Ave. Place at the curb by 7 a.m. **Drop-off:** All yard waste is accepted at Yard Waste Facility (898 S. Levis Ave.). A fee is charged. City residents with a pick up truck or 4' x 8' single axle trailer pay a reduced fee (show utility bill as proof of residency). Mon.–Fri., 7 a.m. – 4:30 p.m., Sat., 7 a.m. – 12 p.m.

Treasure Island – **Curbside:** On trash day, put leaves or yard clippings in 32-gallon or smaller garbage cans or bags. Larger brush piled at the curb not to exceed 3' in length or 5" in diameter. No charge for first hopper load (4' wide x 3' high x 6' long).

Electronics

(For other options, see pages 20 & 21)

Clearwater – **Drop-off:** Free Electronics Collection Days are held on the last Wednesday of the month, from 7 a.m. – 3 p.m. (1701 N. Hercules Ave.). Up to six electronic items. Bring utility bill for proof of residency. Call **562-4933**.

Gulfport – **Curbside:** Residents may call the city at **893-1089** to request a pick up of electronic items (\$28/item).

St. Petersburg – **Curbside:** Residents may call the Sanitation Department at **893-7398** to arrange for free pick up of unwanted TVs or computers. Call first, then put the electronic item(s) curbside on the date specified.

Treasure Island – **Curbside:** Residents call **547-4575 x 253** to request curbside pick up of electronic items (\$15/first item and \$5/second item).



Free Recycled Mulch

Pick up mulch at convenient sites around the county. The site numbers correspond with the map on page 3.

Recycled Mulch Information

- Clean loads of yard trimmings (tree branches, leaves, brush and grass clippings) are collected and processed separate from regular trash.
- Mulch not only makes landscaping more attractive, it also saves water by conserving soil moisture.
- At Pinellas County Solid Waste, weed seeds, plant diseases and insects are eliminated or distorted using a natural heating and decomposition process prescribed by the University of Florida. The result is a high-quality landscaping product.
- Bulk loading is available for pick up trucks at Pinellas County Solid Waste (see #58 on this page).
- Be prepared with a tarp or vehicle cover to keep your mulch load secured, as required by law.
- Bring a pitchfork or shovel and something to place mulch in, and help yourself. There is no limit while supplies last.

CLEARWATER

61 Moccasin Lake Nature Park
2750 Park Trail Ln., east of US 19 N.
(793-2976) *Open Thurs.–Sat., 10 a.m. - 6 p.m.,
Sun., 12 - 4 p.m.*

2 Clearwater Solid Waste Facility
1701 N. Hercules Ave. (562-4920)
Daylight hours/7 days

DUNEDIN

4 Lake Haven Recycling
817 Lake Haven Rd., behind
Solid Waste & Recycling (298-3215)
Open 24 hours/7 days

GULFPORT

5 Neighborhood Center
1617 49th St. S. (893-1089)
Open 24 hours/7 days

INDIAN ROCKS BEACH

67 Behind the Art Center
1515 Bay Palm Blvd. (595-6889)
Open 24 hours/7 days

LARGO

14 Starkey Road Recycling
1551 Starkey Rd. (587-6760)
Open 24 hours/7 days

62 Walsingham Park
12615 102nd Ave. N. (464-7500)
Open 7 a.m. to dusk/7 days

MADEIRA BEACH

63 Bicentennial Park
Before Tom Stuart Causeway
(409-7074) *Open 24 hours/7 days*

OLDSMAR

64 Near Cypress Forest Recreation Center (813-749-1135) 200 feet north of 650 Pine Ave. N., *Open 8 a.m. - 8 p.m./7 days*

PALM HARBOR AREA

53 John Chesnut Sr. Park
2200 East Lake Rd. (464-7500)
Open 7 a.m. to dusk/7 days

PINELLAS PARK

16 12950 40th St. N.
(369-0690) Residents only.
Open 7:30 a.m. - 4:30 p.m./7 days

SAFETY HARBOR

19 Public Works
1200 Railroad Ave. (724-1550)
Open Mon. - Fri., 7 a.m. - 2 p.m.

ST. PETERSBURG

58 Pinellas County Solid Waste
(464-7500)

- 2855 109th Ave. N., west of the Household Electronics and Chemical Collection Center (HEC₃).
Open 24 hours/7 days
- 3095 114th Ave. N., bulk quantities available with free loading.
*Open Mon.–Fri., 6 a.m. - 6 p.m.,
Sat., 7 a.m. - 5 p.m.*

City of St. Petersburg Recycling and Brush Sites (893-7398)

21 1000 62nd Ave. N.E.

22 7750 26th Ave. N.

23 2453 20th Ave. N.

24 2500 26th Ave. S.

25 4015 Dr. MLK Jr. St. S.

Delivery available in city (fee).
*Open Mon.–Fri., 9 a.m. - 5:30 p.m.,
Sat.–Sun., 8 a.m. - 5:30 p.m.*

TARPON SPRINGS

48 A.L. Anderson Park
39699 US 19 N. (464-7500)
Open 7 a.m. to dusk/7 days

TREASURE ISLAND

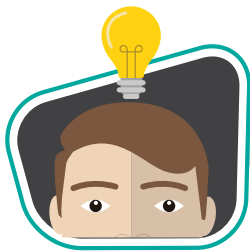
44 Isle of Capri
Rosselli Park,
Capri Circle S. at Second St. E.
(547-4575, ext. 250)
Open 24 hours/7 days



Good to Know...Proper Medicine Disposal

Do not flush unwanted household medications down the drain! The wastewater treatment process is not designed to remove them. The Pinellas County Sheriff's Office Operation Medicine Cabinet has permanent drop-off centers and collection

events for residents (www.pcsoweb.com). To learn how to properly dispose of your household medications, refer to www.pinellascounty.org/recycle, select A to Z Guide, then enter the word "Medications."



Education & Outreach Resources

Learn about the educational resources available to Pinellas County residents.

Drop in for a tour or schedule a presentation



Learn about Pinellas County's award-winning integrated solid waste management facility. Discover the science and principles used to manage the resources you no longer need while touring Pinellas County's waste processing and disposal facilities, located in a natural park-like setting. Tours and presentations can be modified to fit the age and special interests of your group. Great for adult and school groups (grades 3 and above). Information is online under Tours and Presentations at www.pinellascounty.org/solidwaste/educational or call 464-7500.

Join a prescheduled tour the first Friday of the month from 11:30 a.m. to 1 p.m. Register on Eventbrite at www.eventbrite.com and type "Pinellas County Solid Waste."

Learn about the Four Rs

- **Reduce:** Buy only what you need. Select items that have the least packaging.
- **Reuse:** Before you throw items away, think whether or not they can be reused or repurposed.
- **Recycle:** Traditional materials (cans, bottles, paper) are easily recycled either curbside or at one of the 65 drop-off locations throughout Pinellas County.
- **Recover:** Pinellas County Solid Waste uses garbage as fuel by converting it to electricity—enough to power over 40,000 homes per day. We recover and treat the stormwater from our 705-acre site and reuse it in our Waste-to-Energy facility. Metals are recovered from the ash left from burning the garbage and are later recycled. The remaining ash is used as landfill cover. Additionally, yard waste is ground up and recycled into mulch, which is available free at 20 convenient sites around the county (see page 13).



Pinellas County Solid Waste invites you to attend the First Annual Eco Fun Festival Sunday, Feb. 26, 2017 • 11 a.m. to 4 p.m.

Learn how to make positive environmental changes in your home and community. The event will feature facility tours, Touch-a-Truck, educational presentations, environmentally-themed exhibitors, food vendors and giveaways.

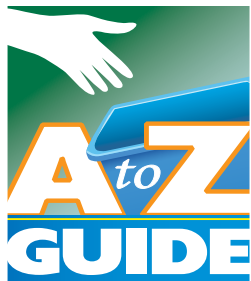
Register on Eventbrite for **FREE** giveaways at the event at www.pinellascounty.org/ecofunfest. Separate registration for tours is required.

FREE
Admission



Web Resources

Find helpful web resources on Pinellas County Solid Waste's website or at the following cities' websites.



Pinellas County's NEW A to Z Recycling & Disposal Guide

A NEW widget to find out what to do with over 350 items. The widget is full of useful information about what to do with what you no longer need

to keep. The widget is geolocatable to help you find the recycling or disposal outlet closest to you. Go to www.pinellascounty.org/solidwaste/getridofit.

Clearwater's Recycling Perks Program

Recycling Perks is a free service available to Clearwater residents. Activate your free account at www.recyclingperks.com (select FIND MY CITY, Clearwater, FL for details). Then, every time your recycling container is picked up, you will receive 25 points that can be redeemed at participating local businesses.

Oldsmar's NEW Recycle Coach App

Oldsmar puts garbage, recycling, special waste collection details and more at your fingertips, anytime you want them! Check out Oldsmar's NEW Recycle Coach app. Go to www.myoldsmar.com and select Solid Waste Division for more information.



Pinellas County GIS

Use the Recycle Finder application to help you locate a recycling location, find out the materials accepted and map directions on how to get there. Download the GIS app to your phone or visit www.pinellascounty.org/egis.



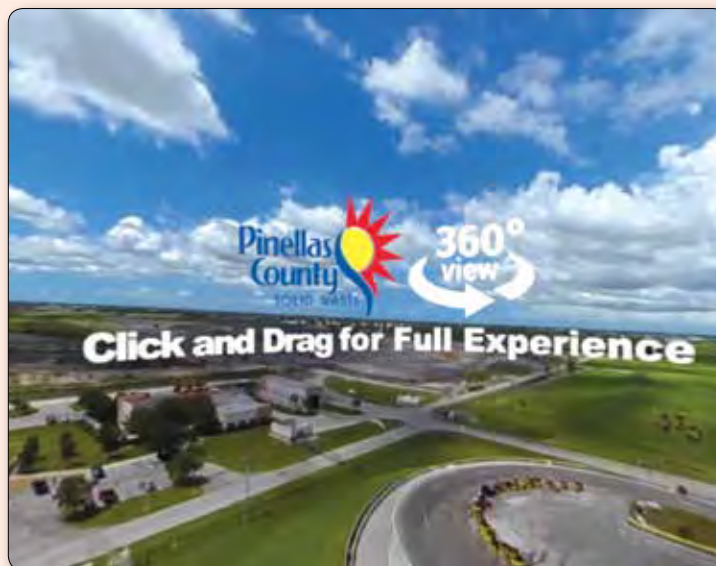
St. Pete Collects Mobile App

Never miss another residential trash and/or recycling collection day with St. Pete Collects! Download the app for personal reminders before collection days and automatic notifications when holidays or bad weather impact your schedule. Make recycling easy with mobile collection events, tips for a greener lifestyle and the Waste Wizard to look up accepted materials. Go to www.stpete.org/recycle for more information.

Visit your city's website for detailed recycling information.

Take a virtual tour of Pinellas County Solid Waste

Explore Pinellas County Solid Waste in this 360 degree video where you hover over the tipping floor next to the 6-ton "claw" at the Waste-to-Energy facility, go behind the scenes at our Household Electronics and Chemical Collection Center (HEC₃), and feel the need and speed of 1,000+ vehicles per day that go through the Scalehouse. Experience Pinellas County's Bridgeway Acres like you have never seen it before. To watch this video, visit www.pinellascounty.org/solidwaste, or Pinellas County's YouTube channel at www.youtube.com/PCCTV1 and type "360".





What Can I Do?

Pinellas County Solid Waste strives to practice superior environmental stewardship by working with 24 municipalities and private haulers to provide information and options for disposing what residents no longer need. Learn how you can be a part of it.

Resource Conservation

Small changes in your life can add up to a big difference when you learn about ways to conserve water, energy and solid waste! Visit www.pinellascounty.org/solidwaste/green.



Beaches and Parks

Enjoy our local environment while learning about ways to protect it. Pinellas County Extension offers free homeowner courses, guided hikes and volunteer

opportunities. Learn more: <http://pinellas.ifas.ufl.edu>. You can also visit more than 20,000 acres of county's parks and preserves: www.pinellascounty.org/park. While visiting our beaches and parks, remember to use Pinellas County's Beach and Park Recycling Program's blue recycling bins.

Volunteer

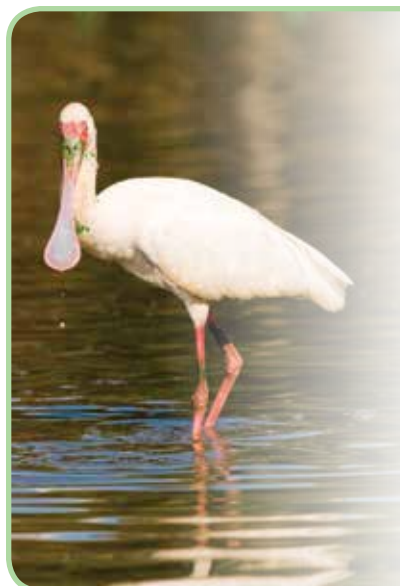
Do you have a desire to give back to your environment? Pinellas County has many opportunities to take part in community restoration and cleanup events through local organizations such as **Keep Pinellas Beautiful**, **Keep Tampa Bay Beautiful**, the **Tampa Bay Estuary Program** and **Tampa Bay Watch**. Keep up to date with their events using social media! You can also check out Pinellas County's opportunities by calling Volunteer Services at **582-2910** or visiting its website at www.pinellascounty.org/volunteer.



At Work



Encourage your business to recycle and take steps toward becoming more environmentally conscious. Please see page 19 for information about our free Cutting Waste at Work Program and the Green Business Partnership.



Keep Pinellas Beautiful is a nonprofit environmental service organization whose mission is to conserve and beautify our natural environment by means of community engagement and education. For information on how you can get involved, visit www.KPBcares.org, call **533-0402** or email info@kpbcares.org.



Got Litter?

Call the Pinellas Litter Hotline: **210-GONE (4663)** to report illegal dumping and heavily littered areas on public rights of way.



Event Recycling

Suggestions for providing recycling and electronic and chemical collection to groups.

Haz-to-Go



Haz-to-Go is a **FREE** service for Pinellas County residents. It is a great complement to neighborhood seasonal cleanups, corporate sustainability and Earth Day events. Haz-to-Go is a service that brings a truck to groups to host their own mini-mobile events for the collection of household electronics and chemicals.

Civic groups, condo and homeowner associations, manufactured home parks and businesses hosting an employee sustainability event (for employees' household waste, not business waste) may schedule the Haz-to-Go truck. On the scheduled day, the Haz-to-Go truck and staff arrive, and participants drop off unwanted items from their homes such as TVs, cell phones, computers, rechargeable batteries, fluorescent bulbs, cleaning chemicals, paints and other household chemicals. For



limits, see page 20. The Haz-to-Go truck is available Tuesday, Wednesday, Thursday and Saturday, from 10 a.m. - 1 p.m. To reserve it or obtain more information, email

Solid Waste at waste@pinellascounty.org or call **464-7500**. Materials collected at Haz-to-Go events increase recycling in Pinellas County.

Recyclin' Roadie

It's easy to recycle at an event—simply supply your guests with a recycling bin next to each trash can. For a small event, simply label a few trash cans with "Recycle Cans and Bottles Here." For a larger event, contact Pinellas County Solid Waste, your city or another provider for portable recycling bins. For occasions such as a festival or sporting events you can borrow Pinellas County's recycling bins or the Recyclin' Roadie. The Recyclin' Roadie is a **FREE** service for Pinellas County



residents for collection of recyclables. To request the Recyclin' Roadie or recycling bins, contact us at least 30 days prior to your event by calling **464-7500** or emailing recycle@pinellascounty.org. We request that the Roadie events have a minimum of 200 participants and a maximum of 2,000 participants. Our recycling outreach

staff can help coordinate recycling efforts or provide educational exhibits for your event.





Multi-Family Recycling

Waste reduction and recycling information for condominiums, apartments, townhomes and manufactured home parks

Residents living in apartments, condos and manufactured home parks should work with their property owners or management companies to establish recycling services.

All units within the development should receive the same service, based on available space for the carts or dumpsters. Many municipalities offer multi-family recycling programs. Private haulers also offer a variety of services.

Our Building Recycles



Benefits

Cost Savings: An increase in recycling may allow for less frequent garbage collection service or a smaller container.

Tenant Satisfaction: Residents want to conserve and protect the environment by recycling to save natural resources, energy, water and oil.

Sustainability: Recycling conserves resources.

Get Started

Management Support: Obtain the support of your property manager or board of directors. When renewing your garbage contract, include recycling service.

Research Recycling Programs:

Contact your municipality (see page 6 for contact information) or current garbage hauler to determine what they can offer, or contact one of the private haulers listed in the shaded box on this page.

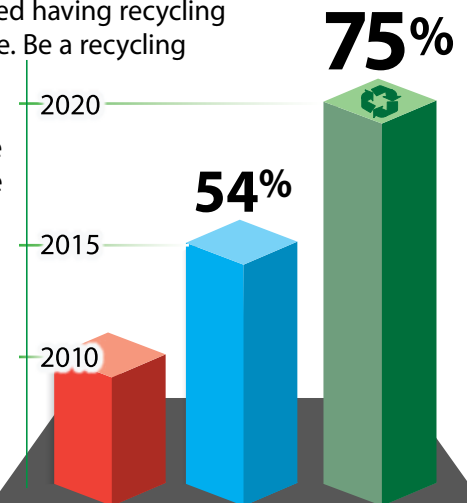
Space: Determine available space for the collection containers. Use 96-gallon carts instead of dumpster if space is limited.



Educate: Provide information to your residents about proper recycling and how to use your program. Use a reusable bag, bucket or laundry basket to carry loose recyclables to the designated location. Search the Internet for ideas about signage for your recycling containers.

Help: Contact Pinellas County Solid Waste for an assessment (described see on page 19). Call **464-7500** or email recycle@pinellascounty.org.

Did You Know? It is estimated that multi-family residents produce an average of 20 gallons/unit/week of recyclables. According to the 2016 Pinellas County Recycling Awareness Survey by Research Data Services, 51 percent of multi-family residents reported having recycling services available. Be a recycling champion and request recycling service to help the State of Florida reach its goal of recycling 75 percent of its waste by 2020.



Haulers Offering Recycling Services in Pinellas County

Municipalities

If your multi-family or business development is located in a city, we suggest you contact the city first to inquire about what they can offer. Some cities offer recycling to multi-family residences as part of their garbage and recycling collection service. See page 6 for municipal contact information, including city websites, where specific information can be found.



Business Waste & Recycling

Waste reduction and disposal for businesses

EnviroBusiness Days

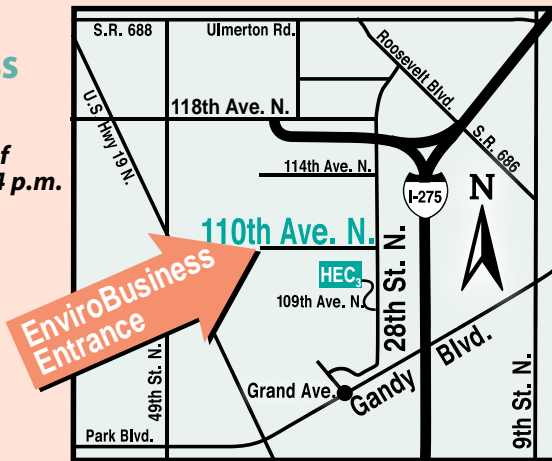
Pinellas County hosts EnviroBusiness Days during which we accept electronic and chemical waste from eligible businesses,* as well as nonprofit and religious organizations, haulers, hobbyists, property managers and salvagers for a fee.

**Eligible businesses are those which qualify as Conditionally Exempt Small Quantity Generators (CESQG) of hazardous waste. CESQGs generate no more than 220 pounds of hazardous waste (and no more than 2.2 pounds of acute hazardous waste) each calendar month. For more information, visit Pinellas County's Small Quantity Generator program web page at www.pinellascounty.org/solidwaste/sqg.htm.*

2017 EnviroBusiness Days

**Second Wednesday of
each month, 9 a.m. - 4 p.m.**

Jan. 11	July 12
Feb. 8	Aug. 9
Mar. 8	Sep. 13
Apr. 12	Oct. 11
May 10	Nov. 8
June 14	Dec. 13



2857 110th Ave. N., St. Petersburg

Disposal Fees: Call ahead to our contractor, US Ecology, to determine pricing, quantity limitations and packaging restrictions at **(813) 319-3400**.

The following private haulers offer recycling service in Pinellas County. We suggest starting with the hauler that already picks up garbage in your neighborhood.

County Sanitation	522-5794
D & D Hauling	586-6416
DisposAll of Pinellas	561-0360
Solar Sanitation	535-0447
Superior Trash Service	254-0664
Waste Connections	572-6800
Waste Management	572-8779
Waste Pro	452-5278

Cutting Waste at Work

Businesses generate the majority of Pinellas County's solid waste and much of it could be reduced, reused or recycled. Cutting waste helps the environment—and your bottom line.

This program is not just for businesses and management companies; it is also available to multi-family developments. Pinellas County staff will work with you every step of the way to study your waste stream, develop a customized waste reduction program, and help promote the program to your employees or residents.

Best of all, it's free!

Six Steps to Cutting Waste:

1. Request a free waste assessment from Pinellas County Solid Waste by emailing sqg@pinellascounty.org or calling **464-7500**.
2. Receive a customized waste assessment summary.
3. Generate support and leadership for the program.
4. Develop a customized program based on the report recommendations.
5. Launch the program and educate employees/residents with free materials provided by Pinellas County Solid Waste.
6. Track program success with assistance from Pinellas County staff.

A Cutting Waste at Work Assessment is the first step in Pinellas County's Green Business Partnership program, offered by Pinellas County Extension.

For more information, call **582-2100, ext. 2**, or visit www.pinellascountyextension.org and select "Green Business Partnership" under "Sustainable Living Green."





Household Electronics & Chemicals

Below is information for proper recycling and disposal of electronics and chemicals at the HEC₃ facility. Businesses, including nonprofit and religious organizations, haulers, hobbyists, property managers and salvagers, should refer to page 19.

Household Electronics and Chemical Collection Center (HEC₃)

If the items were used in their homes, Pinellas County residents can drop off unwanted household electronics and chemicals for free. Limits apply.



- **Pinellas County's Household Electronics and Chemical Collection Center (HEC₃)** located at 2855 109th Ave. N. (off 28th St. N., just south of 118th Ave. N.) in St. Petersburg, 33716 (see map on page 3). Open Monday to Friday, 6 a.m. - 6 p.m., and Saturday, 7 a.m. - 5 p.m. Closed on county-observed holidays.
- **Haz-to-Go events** (see page 17).
- **Mobile collection events** (see page 21).

Visit our Swap Shop!

The Swap Shop offers used household chemicals and paint FREE to residents and governmental entities. We screen all items brought to the HEC₃ for placement in our Swap Shop. Although inventory varies, the Swap Shop usually has the following items:

- Antifreeze
- Automotive fluid
- Household cleaners & disinfectants
- Fertilizer (*available Oct. 1 through May 31*)
- Lawn and garden chemicals
- Lubricants
- Mineral spirits
- Paint & paint removers
- Stains & polyurethane
- Turpentine

Quantities may be limited.

Disposal Information

- Electronics collected are recycled for their parts.
- Chemicals collected are recycled, reused at the Swap Shop, reclaimed or blended for fuel. Lawn and garden chemicals are destroyed in a hazardous waste incinerator.

Quantity Limits Accepted (Per vehicle)

- 6 televisions (must be whole)
- 20 1-gallon paint containers
- 5 5-gallon paint containers (all empty containers may be put in garbage)
- 5 computers
- 12 fluorescent bulbs
- 5 5-gallon containers of fuel, gasoline or kerosene
- 1 5-gallon container of automotive fluids & oil

Customers with quantities in excess of the limits above or with electronics stripped of precious metals may be considered a business. Loads will be evaluated upon arrival. Visit the EnviroBusiness website at www.pinellascounty.org/bizwaste for more information.

Safely transporting chemicals and electronics

It is important to follow these transportation tips to safely deliver your items to the HEC₃, mobile collection events or Haz-To-Go events:

- Don't mix chemicals.
- Keep chemicals in their original containers.

- Put leaky containers in **clear** plastic bags.
- Put containers in open cardboard boxes. Use crumpled newspaper to keep chemicals upright and separated.
- Put boxes in the trunk or in the back of the vehicle away from passengers.
- Cover rechargeable battery terminals with electrical tape to prevent short circuits, or place in individual plastic bags. Alkaline batteries should be disposed in the garbage.

Cooking Oil - Bring to the HEC₃, mobile collection events, Haz-to-Go events or to cooking oil drop-off sites identified on pages 8-11. Do **NOT** pour oil down the drain as it will clog pipes and lead to sewer backups. Small amount may be placed in the garbage.

Fluorescent (tubes and compact) light bulbs

Dispose of at one of the above-listed locations or dispose of at one of the large chain stores that accepts these bulbs (call first to confirm). Refer to the **A to Z Guide** at www.pinellascounty.org/recycle for more options.

Used Motor Oil - Pour into the original containers. Do NOT put oil in containers that used to contain paint, chemicals, solvents, bleach, drinks or food. Drop off at HEC₃ or local auto stores accepting used oil. Call stores first. Refer to the **A to Z Guide** at www.pinellascounty.org/recycle for more options.



Electronic & Chemical Collections

All of these products are household electronics and chemicals, and **DO NOT** go in the garbage. Empty containers from households may go in the garbage.

YES What TO BRING



Household Products

- Adhesives/epoxies
- Aerosols
- Cleaners

Mercury-Containing Devices

- Thermometers
- Thermostats
- Switches
- Fluorescent bulbs*



Paint Products

- Paints/stains*
- Solvents

Lawn & Garden Chemicals

- Pesticides/herbicides
- Fertilizers
- Sprayers



Automotive Products

- Oils/gasoline/diesel/antifreeze*
- (Fuels must be in DOT-approved containers)*

Electronics

- Cell phones
- CPUs*
- Laptops/tablets*
- Monitors*
- Items with rechargeable batteries
- TVs (must be whole)*



Signal Flares (No Flare Guns)

- Marine
- Road

Pool & Spa Products

- Chlorine
- Muriatic acid
- Cleaners/clarifiers



Batteries (tape terminals)

- Rechargeable
- Lead acid

*Subject to limits (see pg. 20).

NO What NOT TO BRING

For guidelines, refer to the A to Z Guide at www.pinellascounty.org/recycle.
For questions, call Solid Waste at 464-7500



Medicine & Sharps



Fire Extinguishers



Appliances (Large or small)



Household Electronics such as vacuums and audio/video equipment



Propane Tanks (over 1 lb.) or other compressed gases

2017 Mobile Collection Schedule

Saturdays 9 a.m. to 2 p.m.

(Collections may be delayed or cancelled due to severe weather).

Jan. 14	East Lake High School	1300 Silver Eagle Dr.
Jan. 28	North County Satellite Site*	29582 US 19 N.
Feb. 18	Seminole Home Depot	10550 Park Blvd.
Feb. 25	North County Satellite Site*	29582 US 19 N.
Mar. 4	St. Petersburg College/Gibbs Campus	6605 Fifth Ave. N.
Mar. 11	Largo Home Depot	10689 Ulmerton Rd.
Mar. 25	North County Satellite Site*	29582 US 19 N.
Apr. 22	North County Satellite Site*	29582 US 19 N.
Apr. 29	Tarpon Springs High School	1411 Gulf Rd.
May 13	Madeira Beach Fundamental Middle School	591 Tom Stuart Causeway
May 20	North County Satellite Site*	29582 US 19 N.
June 24	North County Satellite Site*	29582 US 19 N.
July 22	North County Satellite Site*	29582 US 19 N.
Aug. 26	North County Satellite Site*	29582 US 19 N.
Sep. 9	St. Petersburg College Allstate Center	3200 34 th St. S.
Sep. 16	Seminole High School	8401 131 st St. N.
Sep. 23	North County Satellite Site*	29582 US 19 N.
Oct. 14	Largo High School	410 Missouri Ave. N.
Oct. 28	North County Satellite Site*	29582 US 19 N.
Nov. 4	Gulfport Neighborhood Center	1617 49 th St. S.
Nov. 18	North County Satellite Site*	29582 US 19 N.
Dec. 16	North County Satellite Site*	29582 US 19 N.

* on the west side of US 19 N., behind the North County Government Center, south of Curlew Road

Recycle Right

Do your part to help the State of Florida reach its goal of recycling **75%** of its waste by 2020. In 2015, the State of Florida's recycling rate was **54%**.



YES

Place clean and empty items loose in recycling containers.



Aluminum, Tin & Steel Cans



Cardboard (Flattened)



Cartons (NO straws)



Glass Bottles & Jars
(NO other types of glass)



Newspaper, Mixed Paper & Paperboard (Cereal boxes)



Plastic Bottles
(Plastic containers #1-7)

NO



No plastic bags, wrap, packaging or film



No paper towels, plates, cups, tissue or wax paper



No Styrofoam, foam containers or packaging



Funding provided by Pinellas County Solid Waste. Pinellas County complies with the Americans with Disabilities Act. To obtain accessible formats of this document, please call (727) 464-4062 (V/TDD). Produced in cooperation with the Pinellas County Marketing & Communications Department.

pinellascounty.org/recycle



Scan with a smartphone