

## Shell Key Preserve 2000 - 2006



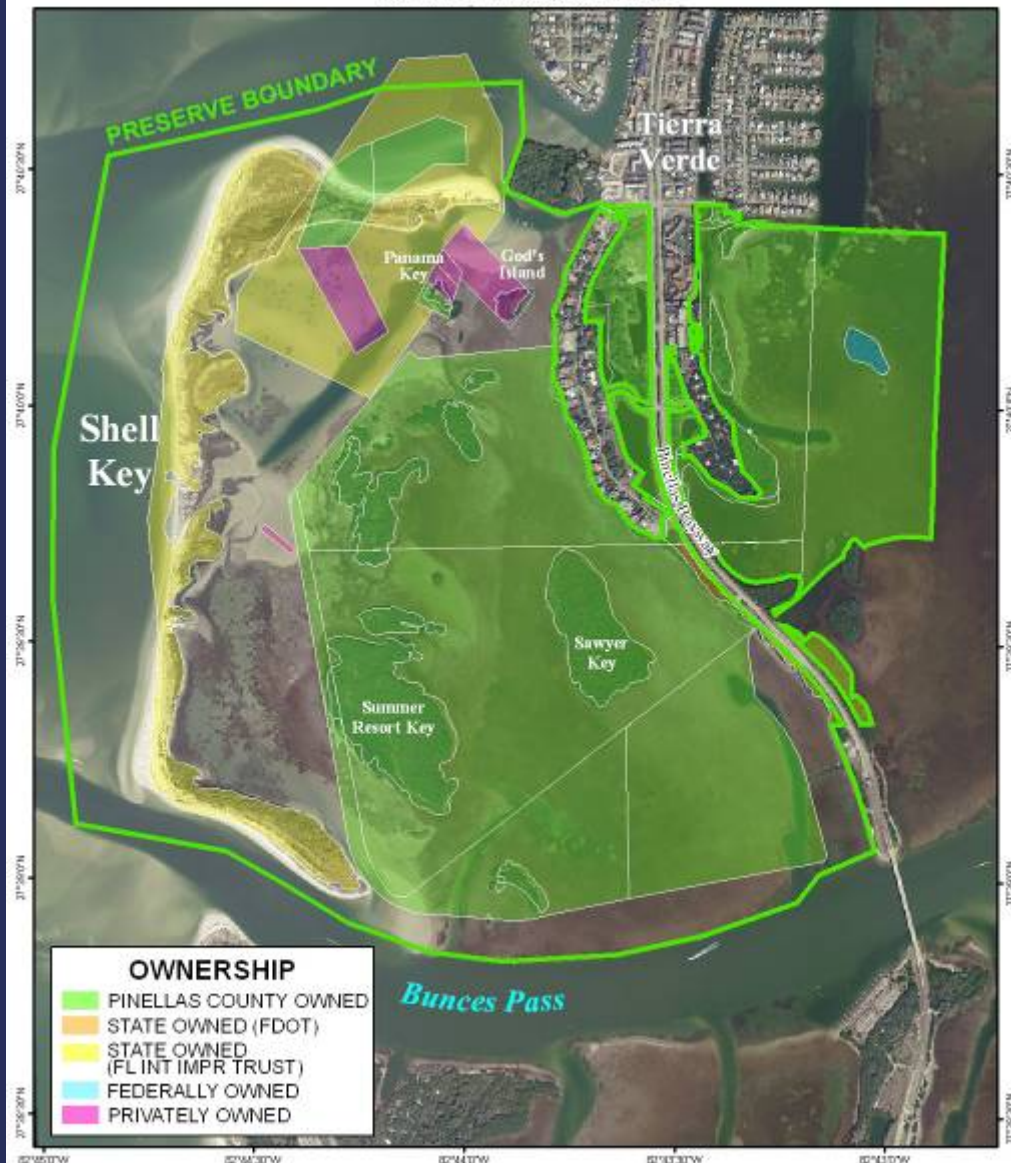
# Shell Key Preserve Management Plan Update – Due October 2007



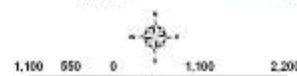
This map was created by the Pinellas County Department of Environmental Management, Environmental Lands Division, from the best available sources. This map is a graphical representation of data to be used for planning purposes only. These data may not have been collected under the supervision of a licensed Professional Surveyor and Mapper. Pinellas County makes no warranty as to the



## SHELL KEY PRESERVE OWNERSHIP



This map was created by the Pinellas County Department of Environmental Management, Environmental Lands Section, from the best available sources. This map is a graphical representation of data to be used for planning purposes only. These data may not have been collected under the supervision of a Licensed Professional Surveyor and Mapper. Pinellas County makes no warranty as to the



## Lease Agreement Shell Key

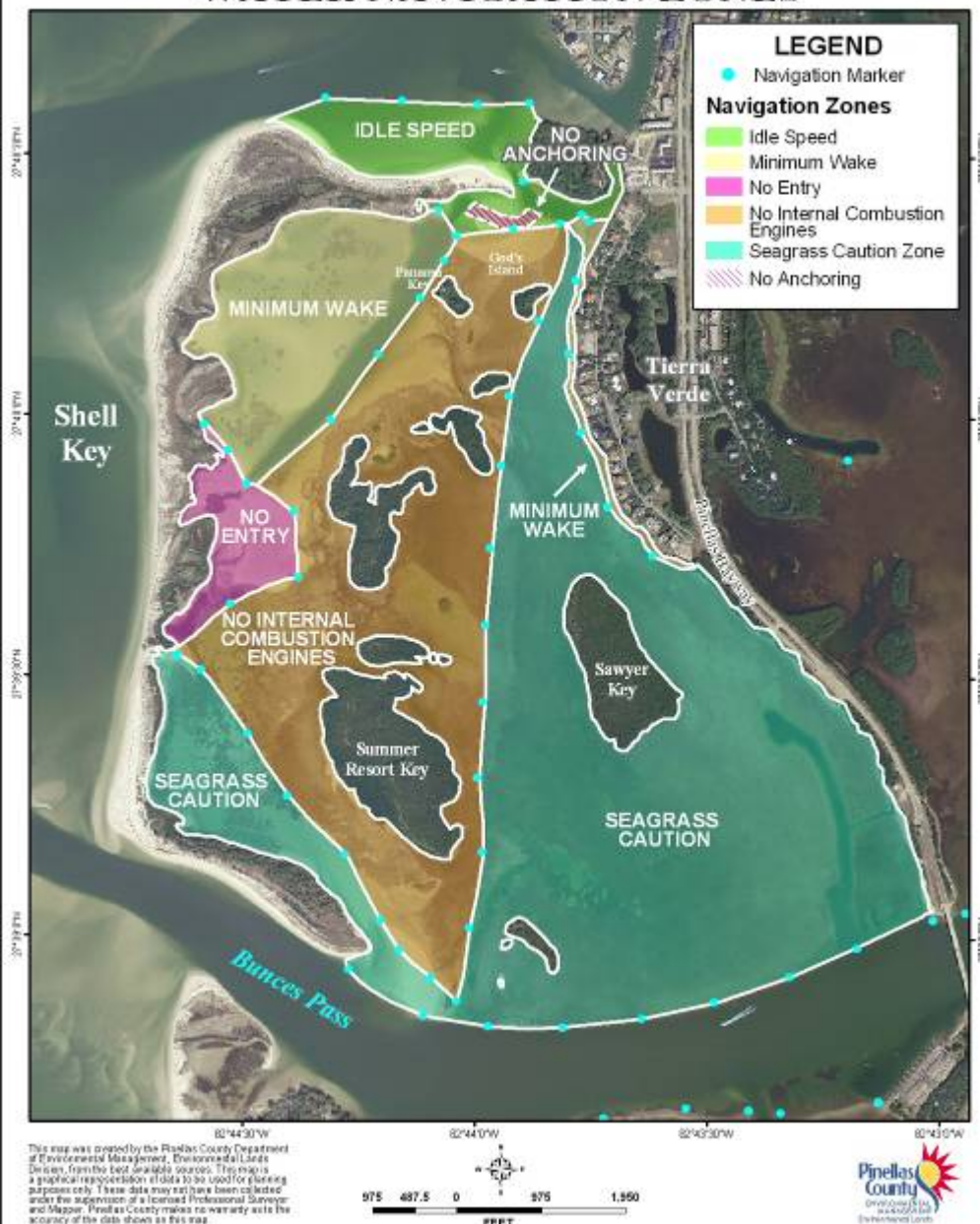
- Entered into agreement in December 2000.
- Agreement between the Board of Trustees of The Internal Improvement Trust Fund of the State of Florida and Pinellas County, Florida.
- Shell Key is managed “only for the conservation and protection of natural and historical resources and for resource based public outdoor activities and education which are compatible with the conservation and protection of these public lands.”
- A management plan must be submitted and approved by the Division of State Lands, Department of Environmental Protection, in accordance with 18-2.021 (4), Florida Administrative Code.

## Lease Agreement Special Conditions

- Ensure management is compatible with protection and conservation of wintering and nesting shorebirds and set forth in subsection 259.032(11) Florida Statutes.
- Delineate core areas for the protection of shorebirds within the greater Shell Key area.
- Post critical bird habitat to prohibit trespassing. Posted boundaries should remain flexible to reflect changes in the island geography and topography.
- Enforce Pinellas County leash laws on Shell Key.
- Prohibit beach raking and mechanical cleaning during shorebird and marine turtle nesting seasons.



## SHELL KEY PRESERVE WATER NAVIGATION ZONES



## SHELL KEY PRESERVE PUBLIC USE DESIGNATIONS



## Shell Key Preserve Advisory Committee

- Recreational boaters, Tierra Verde Community Association and other stakeholders
- Audubon Society
- Florida Department of Environmental Protection (FDEP)
- Florida Fish and Wildlife Conservation Commission (FWC)
- Pinellas County Sheriff's Office (PCSO)
- Pinellas County Department of Environmental Management (DEM)
- Pinellas County Department of Culture, Education and Leisure (CEL)
- Pinellas County Department of Real Estate
- Tampa Bay Estuary Program
- Tampa Bay Watch



## Elements of Existing Plan



## Elements of Existing Plan

### Six Resource Management Goals

1. Protect sensitive natural resources of Shell Key Preserve.
2. Preserve wildlife resources of Shell Key Preserve.
3. Protect seagrass beds within Shell Key Preserve.
4. Continue to pursue appropriate land acquisitions to enhance Shell Key Preserve.
5. Provide public education about the natural resources of Shell Key Preserve and the importance of management actions.
6. Maintain and improve the effectiveness of the management plan for Shell Key Preserve.

## Elements of Existing Plan

### Two Public Use Goals

1. Support passive recreational uses that do not conflict with the natural resources objectives of the Shell Key Preserve Management Plan.
2. Balance public use of Shell Key Preserve with the conservation of its significant natural resources.



## Finalization of Existing Management Plan

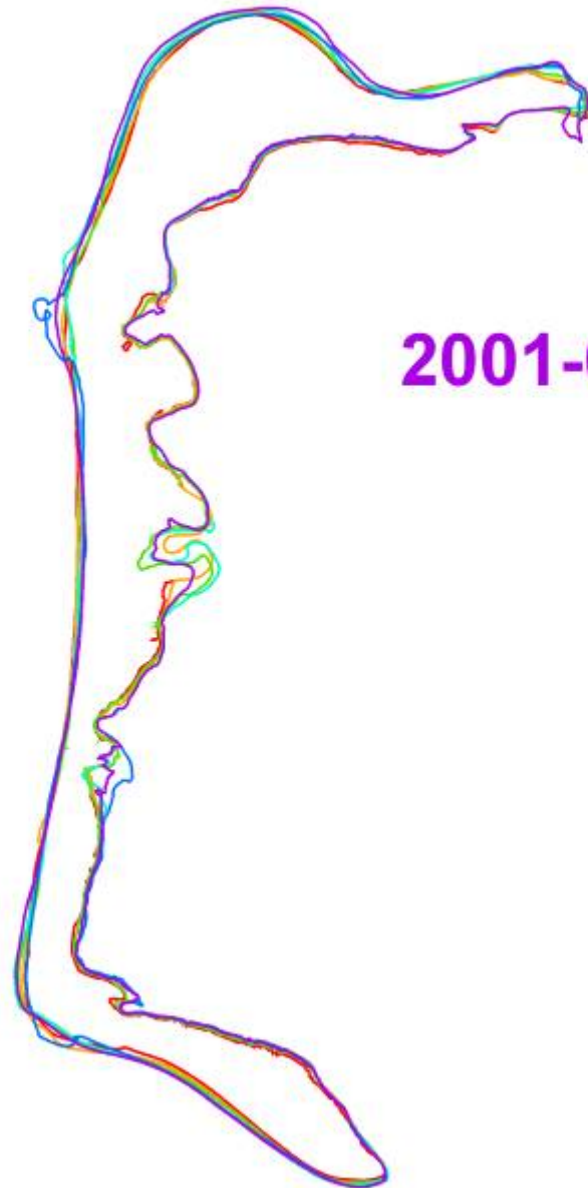
1. Three committee meetings to finalize draft plan
2. Period of public comment
3. Presentation to the Pinellas County Board of County Commissioners
4. Presentation to the Florida Department of Environmental Protection

## Management of Shell Key from 2000 through 2006

- Resource management efforts and status
- Management concerns



# Changes to the Shell Key Coastline over time



2001-06









## Pesky Predators





## Exotics removal and replanting natives

- Cleared 10 acres of Australian pine trees
- USFWS Grants and CIP funding
- Manageable





## Public Education



## Carrying Capacity of Island for Visitors





## Pinellas County Sheriff's Deputies

6 – Deputies each day on summer weekends





## Signage

A minimum of 175 signs on the island of Shell Key

20  
↓

### WELCOME TO SHELL KEY PRESERVE

#### WHILE ON THE ISLAND:

- ALL PLANTS AND ANIMALS ARE PROTECTED
- PETS MUST BE UNDER CONTROL AT ALL TIMES
- DO NOT ENTER BIRD PRESERVATION AREA
- TAKE YOUR TRASH WITH YOU
- CAMPING IS PERMITTED IN DESIGNATED AREAS ONLY
- PERMITS REQUIRED FOR GROUPS OF 50 OR MORE

**\*\*NOTICE\*\* APRIL 15TH - JUNE 15TH  
ENTIRE ISLAND CLOSED TO PETS**

#### THE FOLLOWING ARE PROHIBITED

- OPEN ALCOHOLIC BEVERAGES
- FIREARMS AND FIREWORKS
- EXCESSIVE NOISE
- REMOVAL OF SIGNS
- NUDITY

Pinellas County Ordinance #02-6

PLEASE HELP MANAGE THIS ISLAND FOR  
YOUR ENJOYMENT AND PROTECTION OF  
ITS NATURAL RESOURCES

FOR QUESTIONS OR PERMITS  
727-453-6900

TO REPORT RULE VIOLATIONS  
727-582-6200

124 →



15  
↓



7  
↓

### WELCOME TO SHELL KEY PRESERVE

#### WHILE ON THE ISLAND:

- ALL PLANTS AND ANIMALS ARE PROTECTED
- DO NOT ENTER BIRD PRESERVATION AREA
- TAKE YOUR TRASH WITH YOU
- CAMPING IS PERMITTED IN DESIGNATED AREAS ONLY
- PERMITS REQUIRED FOR GROUPS OF 50 OR MORE

**NO PETS ALLOWED IN THIS AREA**

#### THE FOLLOWING ARE PROHIBITED

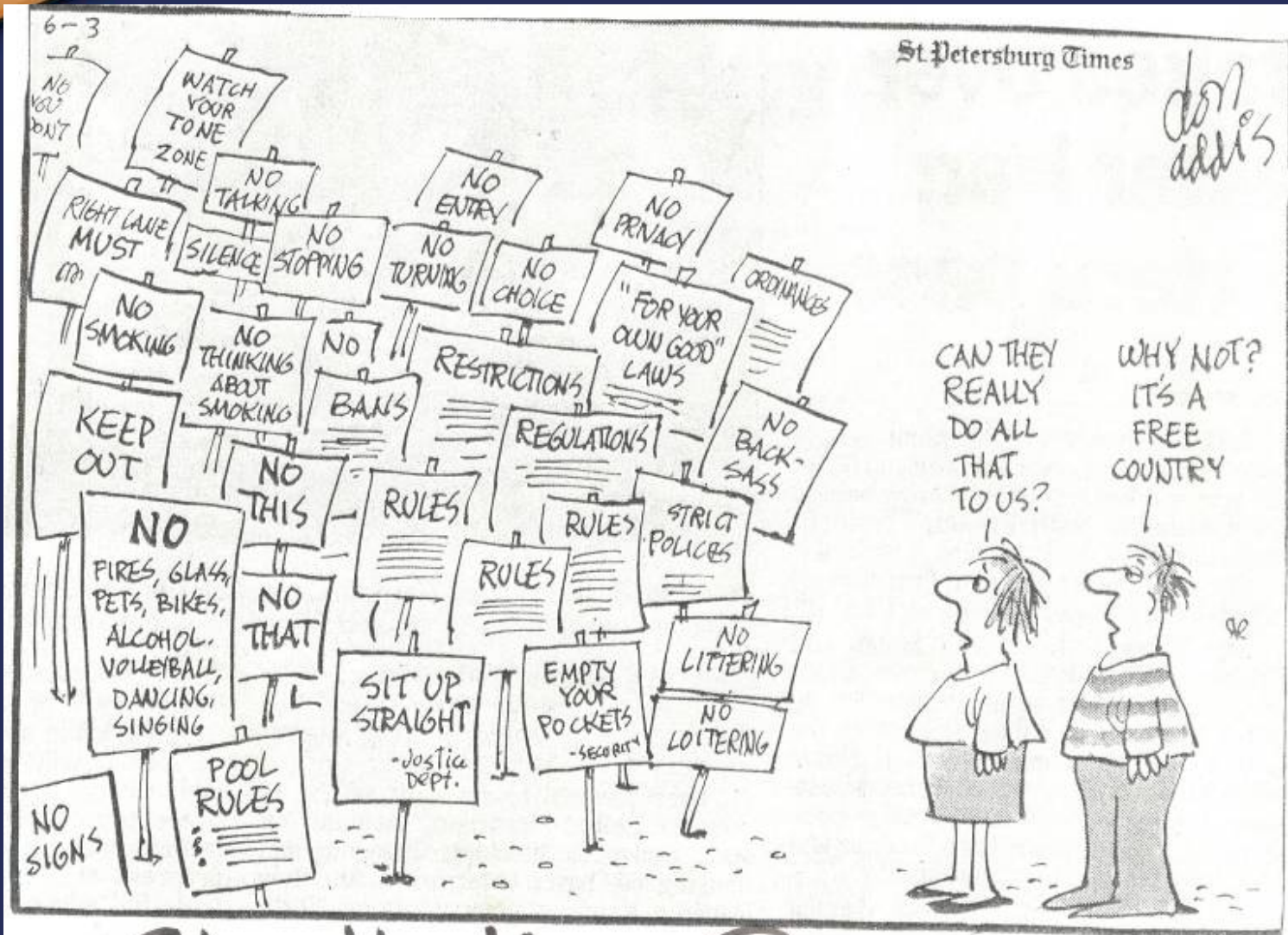
- OPEN ALCOHOLIC BEVERAGES
- FIREARMS AND FIREWORKS
- EXCESSIVE NOISE
- REMOVAL OF SIGNS
- NUDITY

Pinellas County Ordinance #02-6

PLEASE HELP MANAGE THIS ISLAND FOR  
YOUR ENJOYMENT AND PROTECTION OF  
ITS NATURAL RESOURCES

FOR QUESTIONS OR PERMITS  
727-453-6900

TO REPORT RULE VIOLATIONS  
727-582-6200



Shell Key Preserve



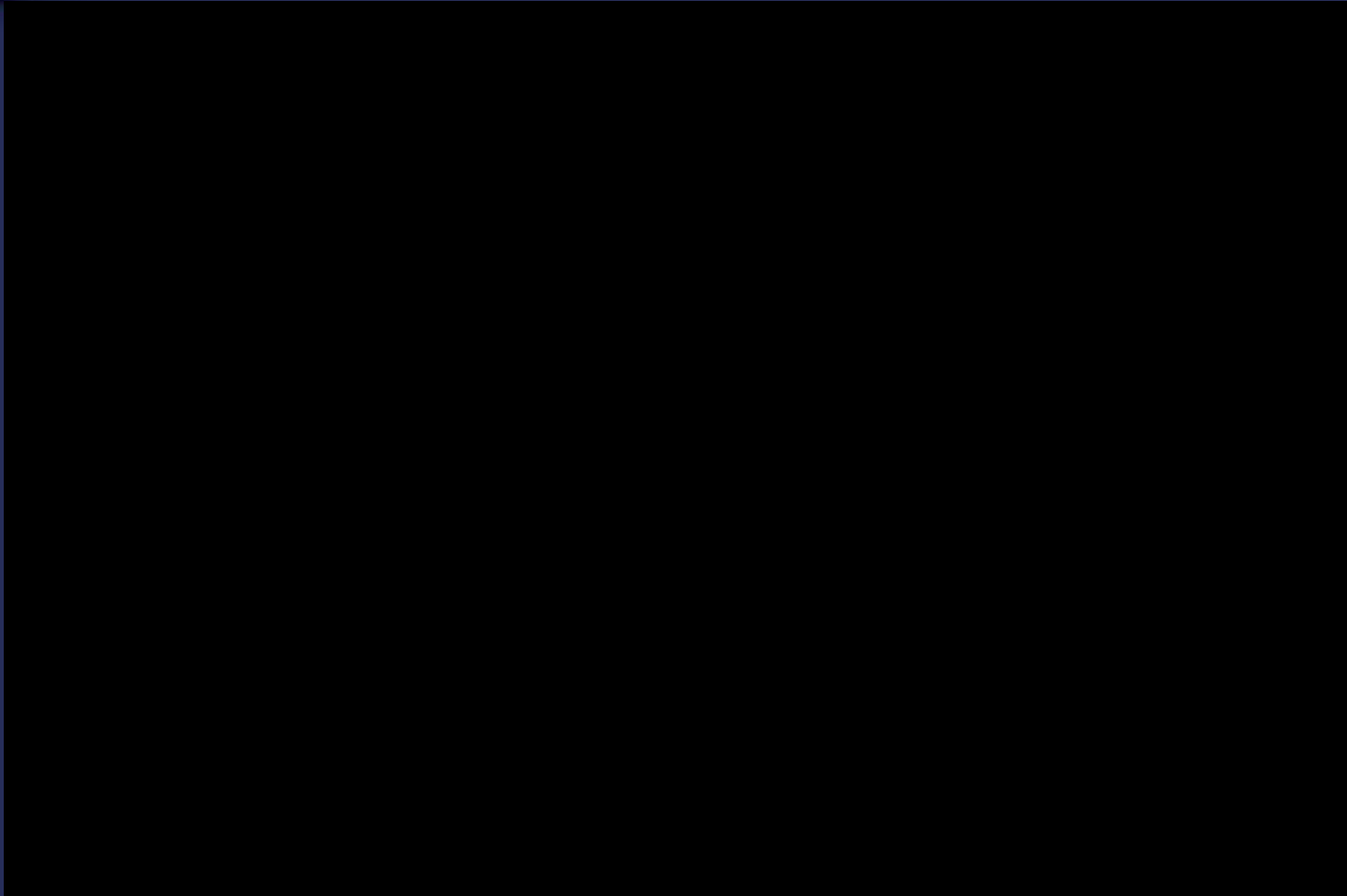
**Public Use Goal 2, Action 2-**"the possession or consumption of alcoholic beverages is prohibited on the island of Shell Key."

[www.carolinamike.com](http://www.carolinamike.com)



[www.carolinamike.com](http://www.carolinamike.com)

Carolina Mikes -  
Sangria Sunset at Shell Key





## Human health and safety issues







## Human Waste

- Creates health and safety issues.
- Creates aesthetics problems.









## Beach Clean-ups

Shell Key Shuttle

Volunteers

ELD Staff

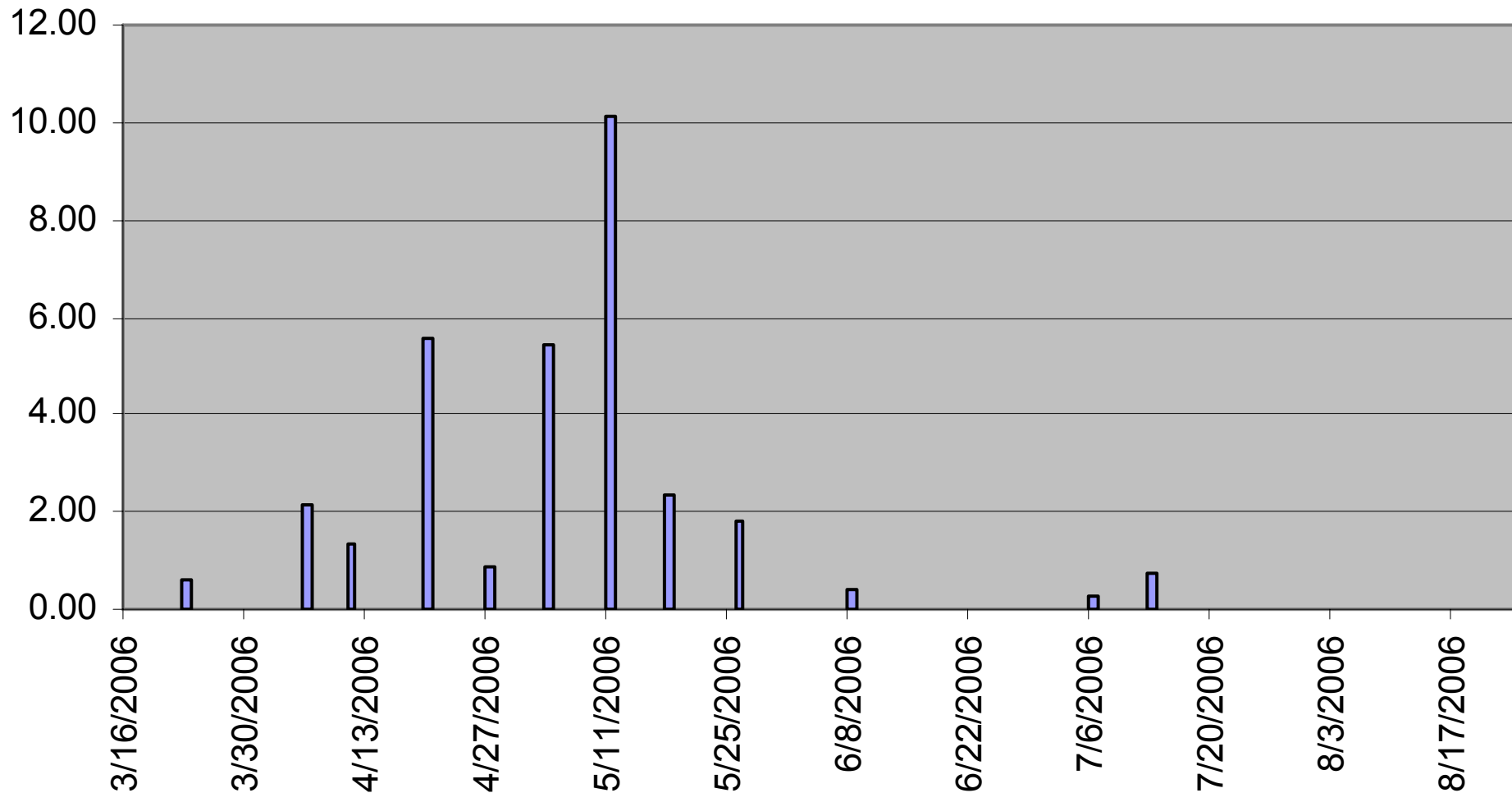
Ft. DeSoto Park Staff

DEM Staff





## Fish Crows Counted Per Hour





## More Public Education

Interpretive signs

Onsite education

Educate shuttle employees





## Shell Key – northeast tip after 2004 storm season



## Timetable for Revised Management Plan

### January 2007

- Letters to potential committee members
- Initial presentation to Environmental Science Forum (ESF)

### February 2007

- First committee meeting to discuss necessary updates
- Discussion and edits

### April 2007

- Present changes to committee from February meeting
- Discussion and final edits

### May 2007

- Public workshop of ESF approved draft plan
- Draft plan to ESF

### June 2007

- Board of County Commissioners approval of final draft
- Dept. of Env. Protection receipt of plan update for approval
- Dept. of Env. Protection discussion and final edits

### October 2007

- Fulfillment of lease agreement requirements
- Revised Management Plan for Shell Key in effect