



ESF SPECIAL SCIENCE COMMITTEE REPORT ON

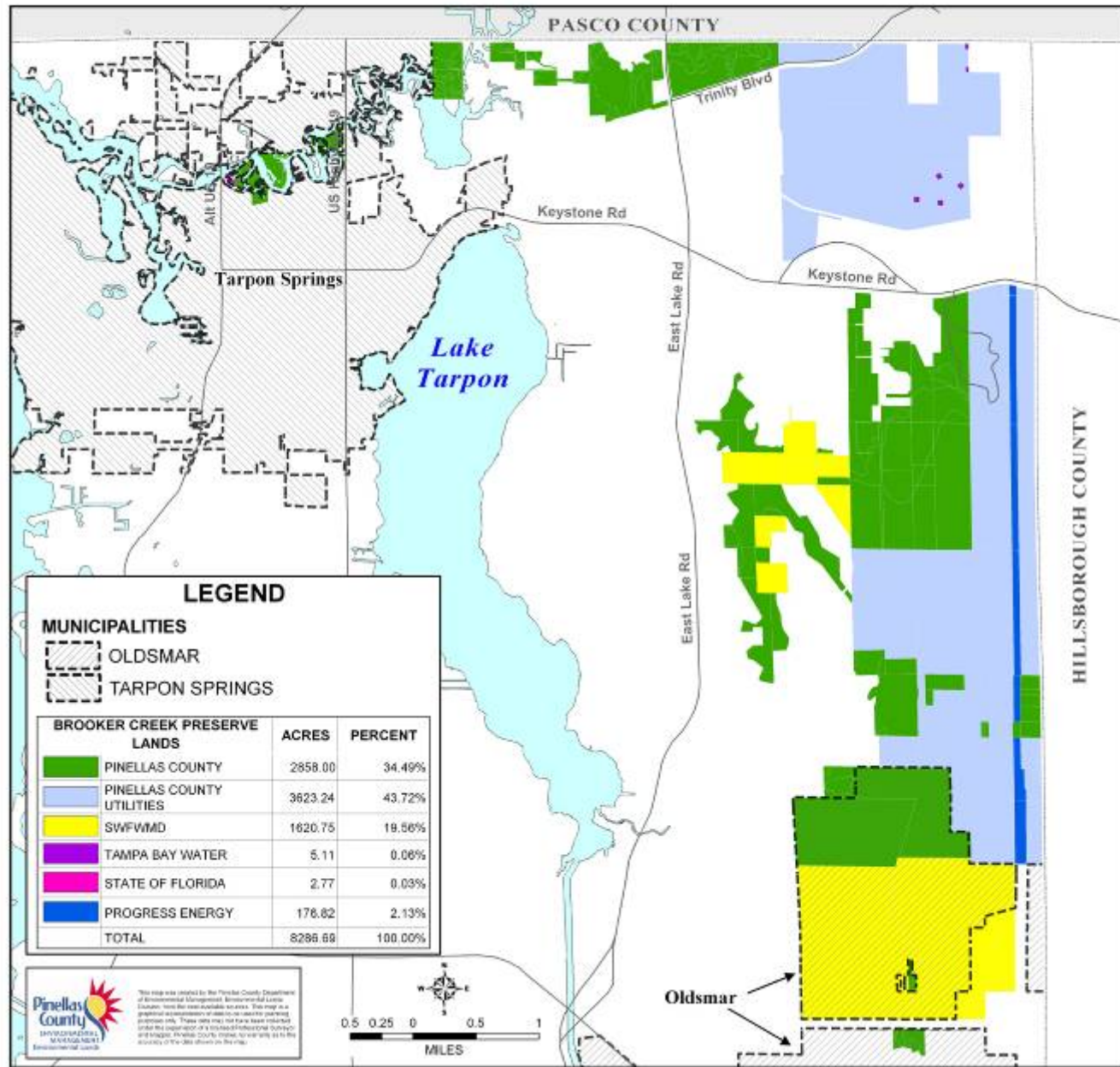
ELYSA RECREATIONAL FIELDS



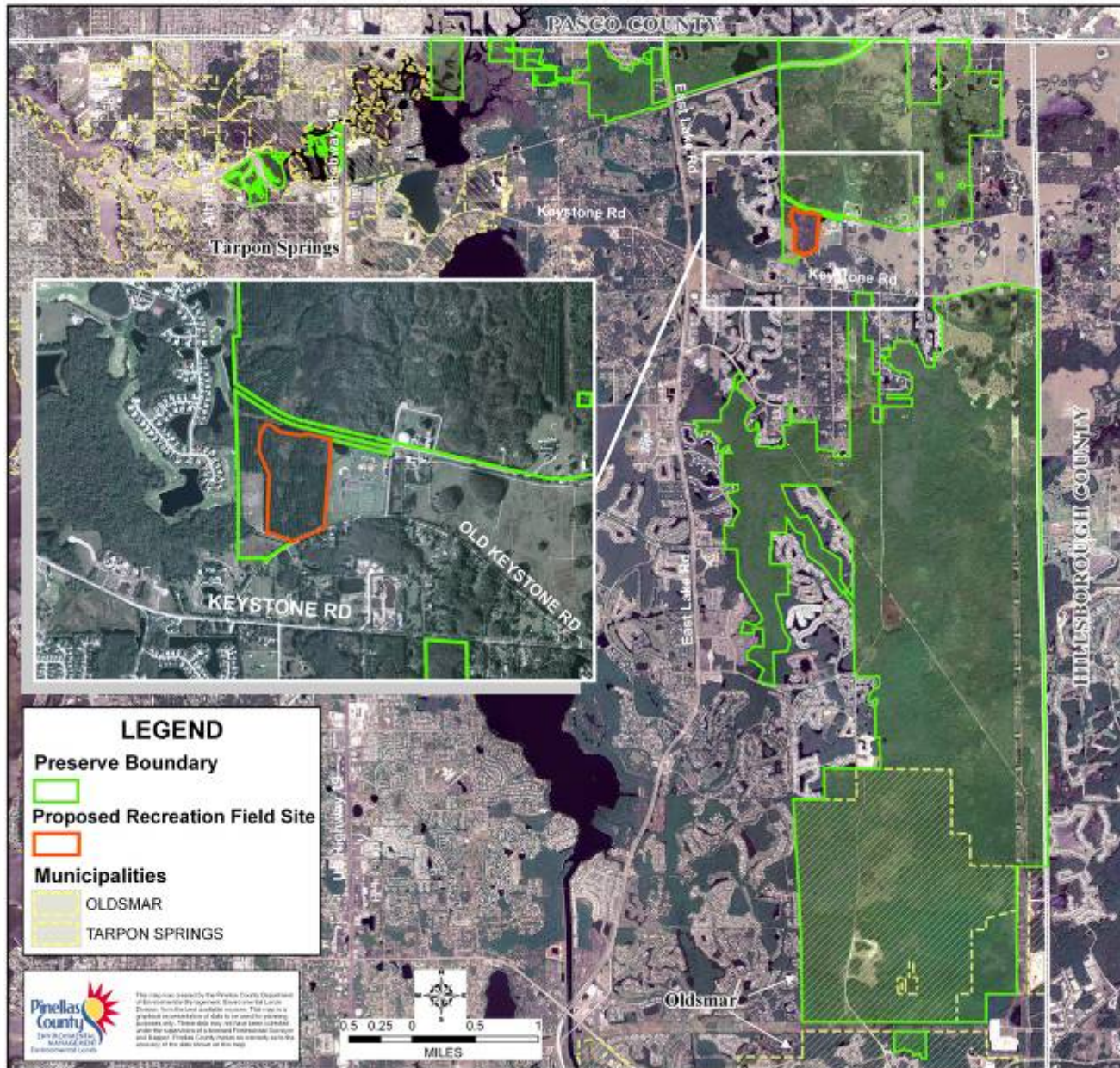
Introduction

- Site Location Aerial
- Historical Aerials
- Preliminary Site Plan

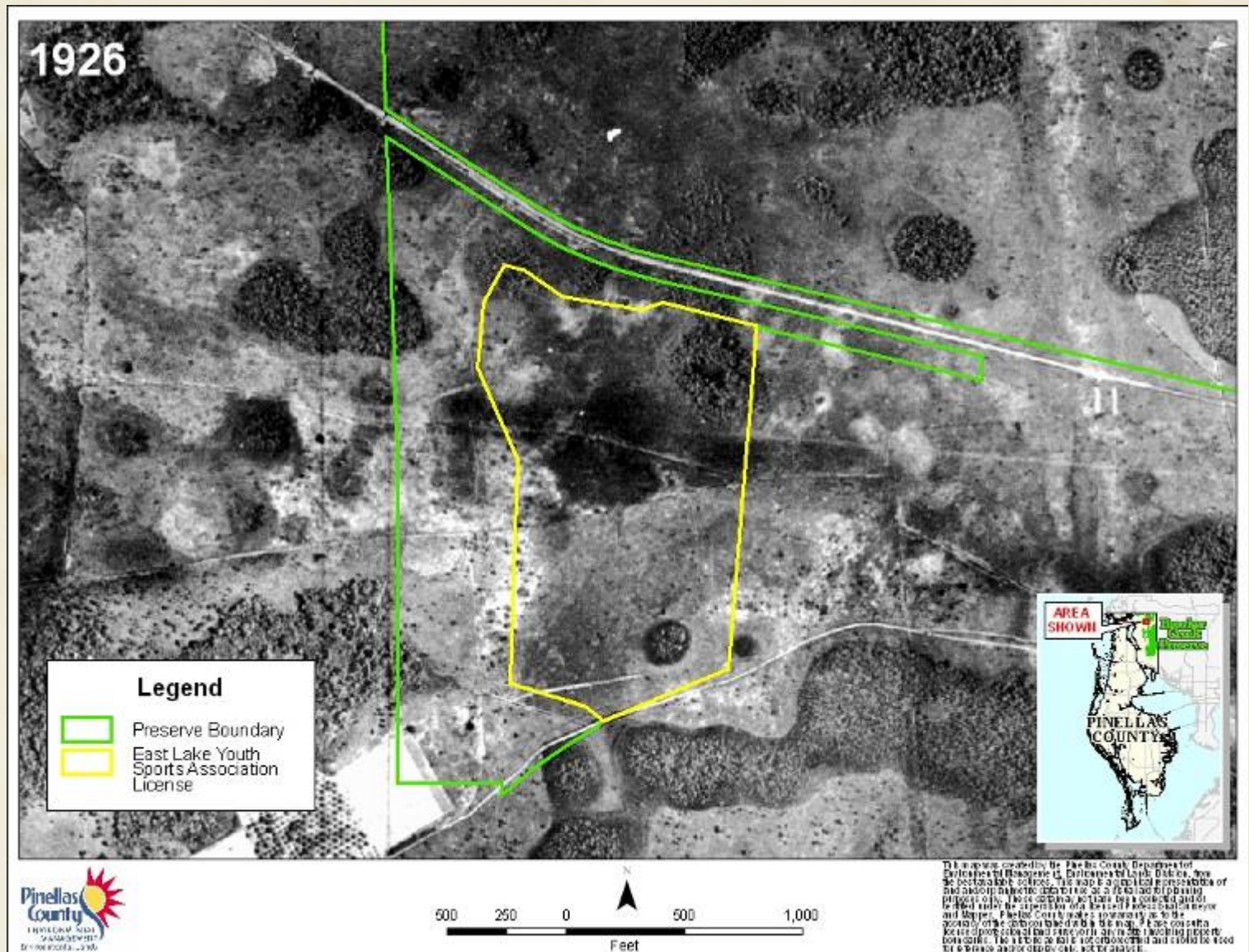
BROOKER CREEK PRESERVE



BROOKER CREEK PRESERVE PROPOSED RECREATION FIELD LOCATION

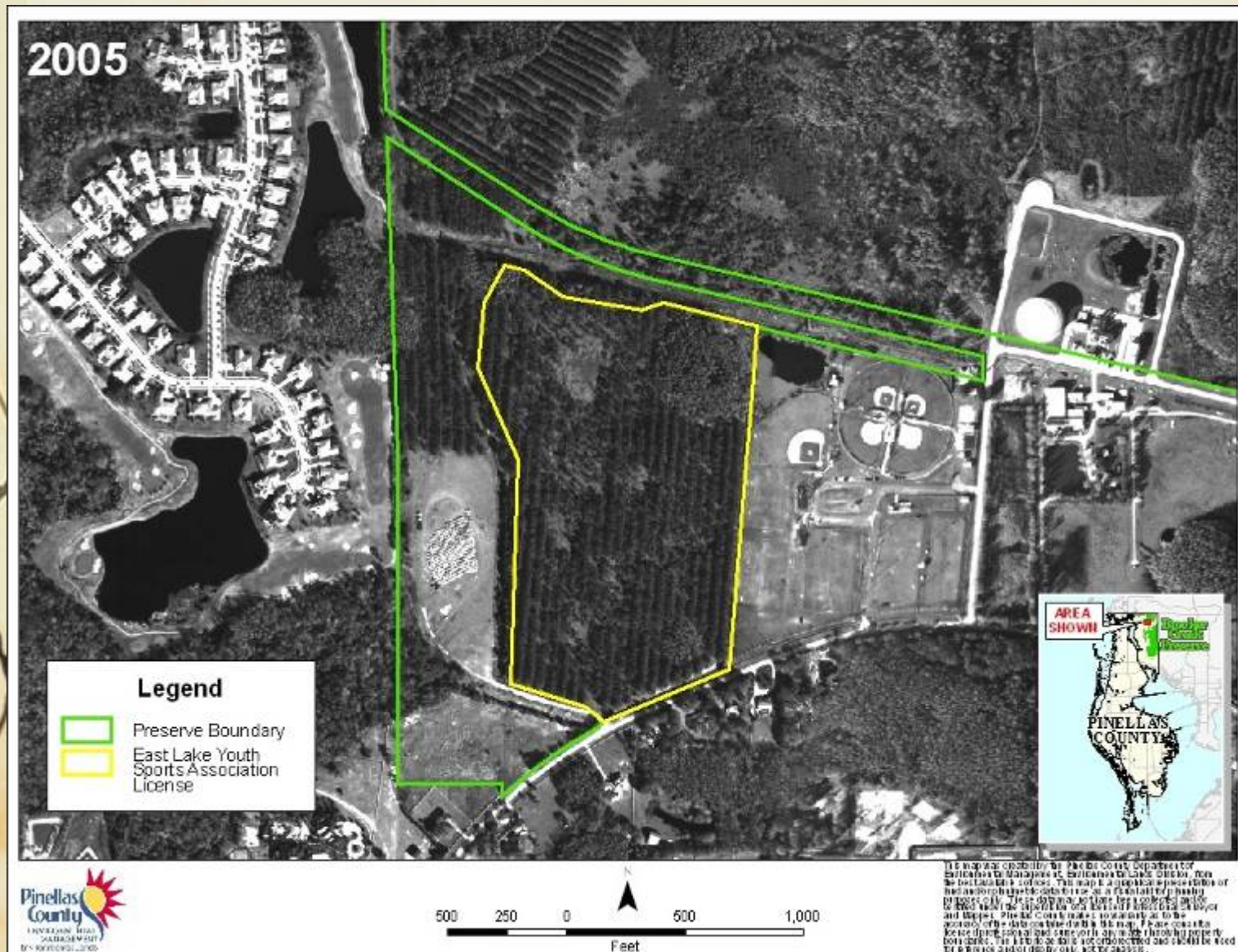


Historic Aerials - 1926

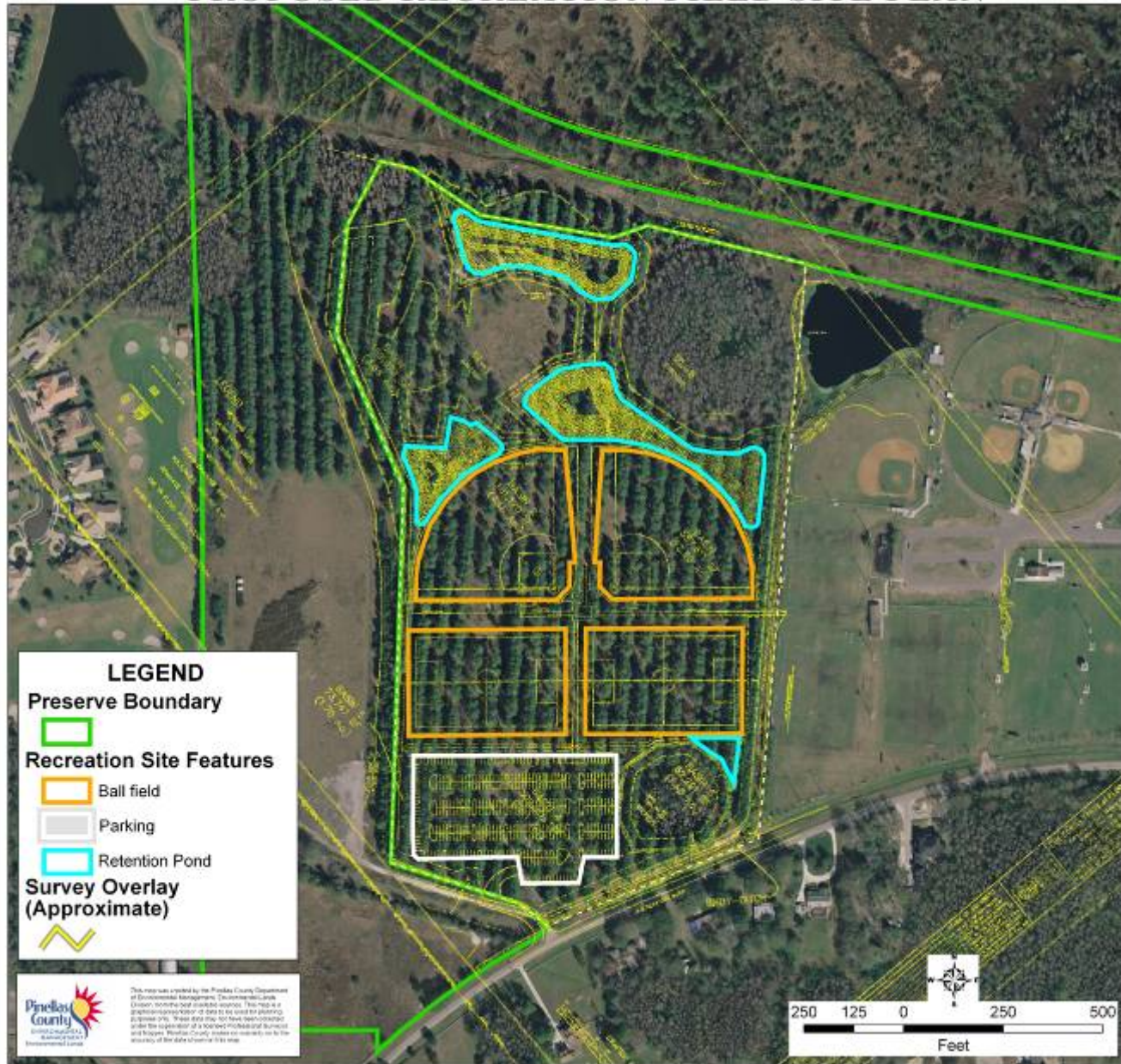




Historic Aerials - 2005



BROOKER CREEK PRESERVE PROPOSED RECREATION FIELD SITE PLAN





Vegetative/Animal Survey

Summary for October 3, 2006 Vascular Plant Inventory

- Vascular Plant inventory included a total of 69 species; noting 58 native plant species
- Flora inventory noted 11 non-native species , 4 exotic invasive species in the project area, and 3 category I exotic invasive species
- Vascular flora inventory did not assess jurisdictional wetlands
- Camphor tree, Air Potato and Chinese Tallow should be controlled as soon as possible using best management practices, as these species displace existing native plant communities.



Vegetative/Animal Survey

Florida Birding Festival (1999 – 2000) Observations
Relative to the adjacent “Scenic Horse Trail Route

- 25 bird species observed
- 19 of the 25 observed species actively utilize the pine tree plantation located on the subject land parcel
- 6 of the observed species that utilize the pine plantation are raptors
 - Osprey
 - Eastern Screech Owl
 - American Kestrel
 - Red Shouldered Hawk
 - Black Vulture
 - Turkey Vulture

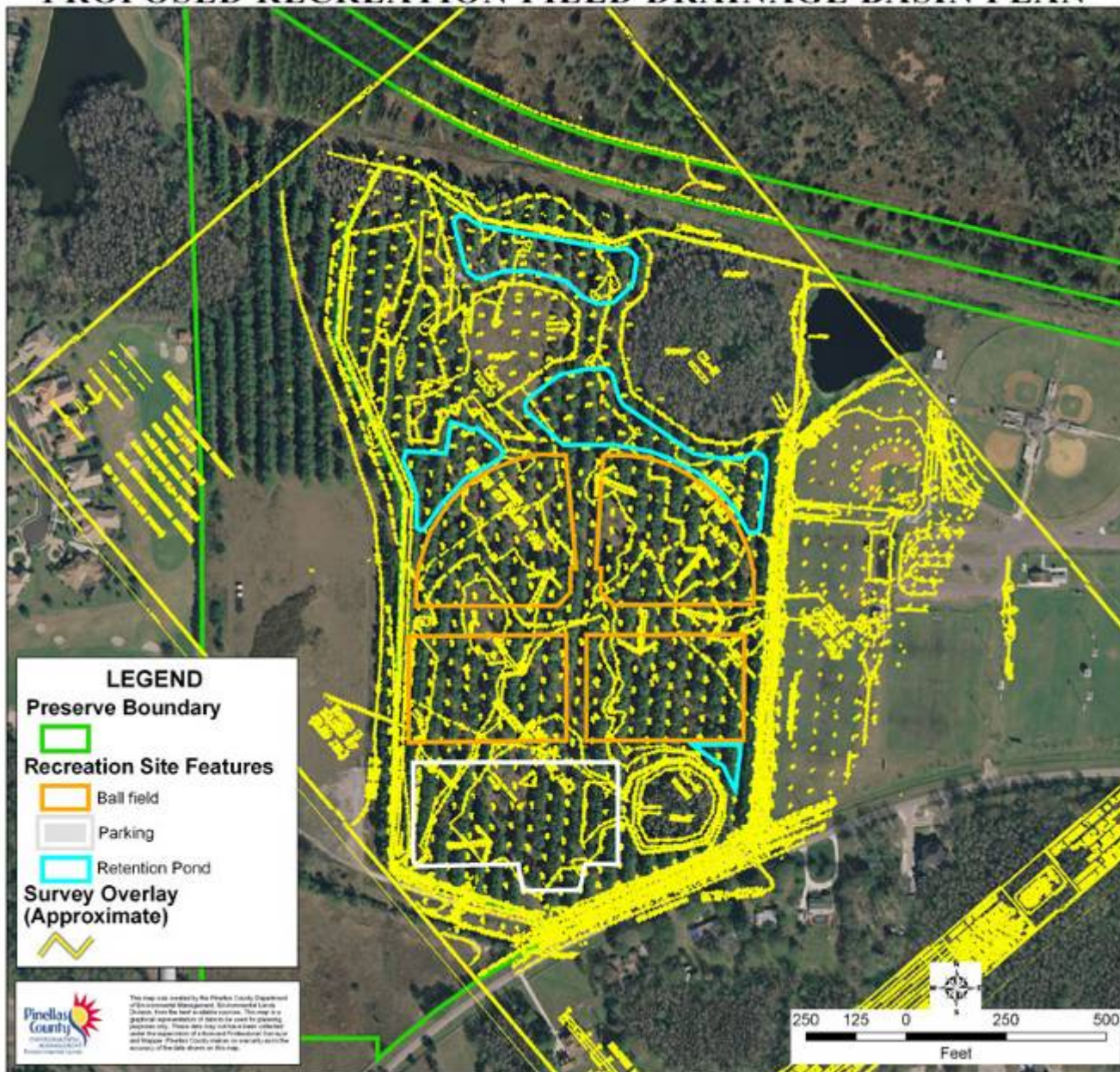


Drainage

- Wetlands
- Parking Lot
- Fields
- Watershed
- Nutrients

Recommendation

BROOKER CREEK PRESERVE PROPOSED RECREATION FIELD DRAINAGE BASIN PLAN





Vegetative Communities

- Wetlands
- Buffers
- Off-site

Recommendation



General Development

- Low Impact Design
- Native Plant Vegetation
- Lighting/Noise

Recommendation



Conclusion

- Balance
- Brooker Creek Preserve Future Uses