



KICK-OFF PRESENTATION



SAN MARTIN BOULEVARD OVER RIVIERA BAY PROJECT DEVELOPMENT & ENVIRONMENT (PD&E) STUDY

PROJECT IDENTIFICATION NUMBER
(PID): #001036A

July 14, 2015





PRESENTATION OVERVIEW



1

Introduction

2

San Martin Blvd. Bridge Replacement

3

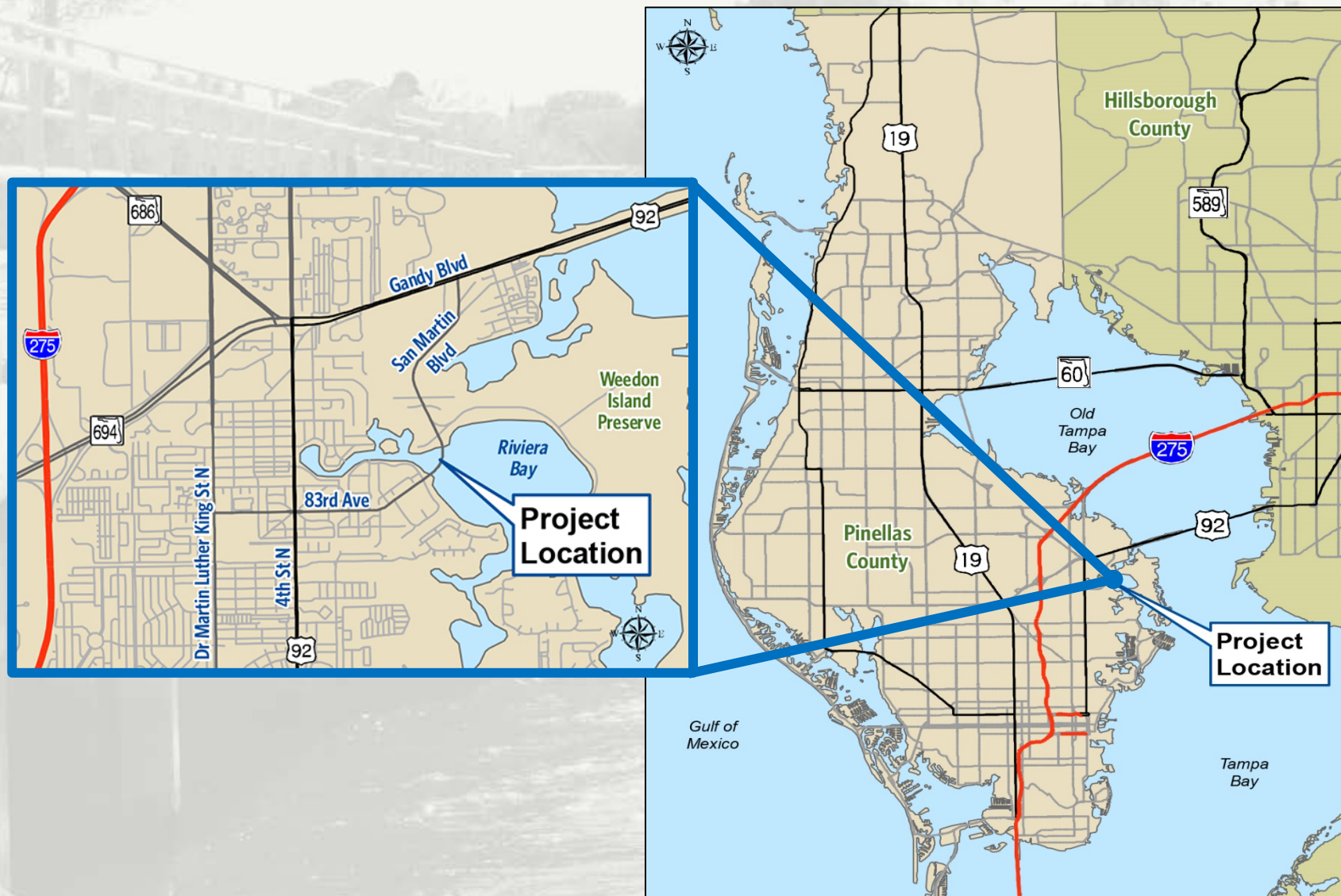
North Bay Trail Extension Evaluation

4

Project Schedule



PROJECT LOCATION





PROJECT HISTORY



1960

1962 | San Martin Blvd. Bridge Built

1970

1980

1990

2000

2001 | Load Testing Evaluation

2003 | City Trails Program Initiated



2010

2014 | Pinellas County Initiates PD&E Study

2012 | Pinellas County Initiates Bridge Replacement Study

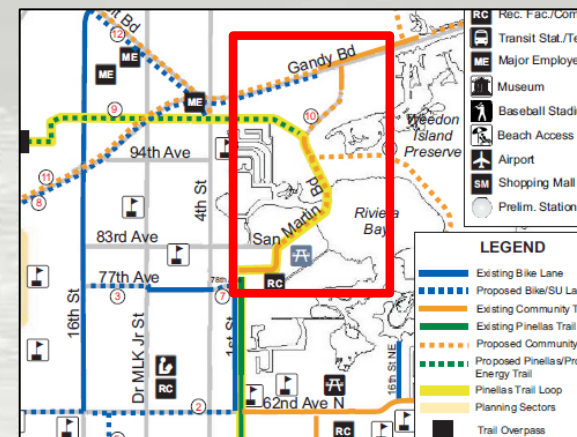
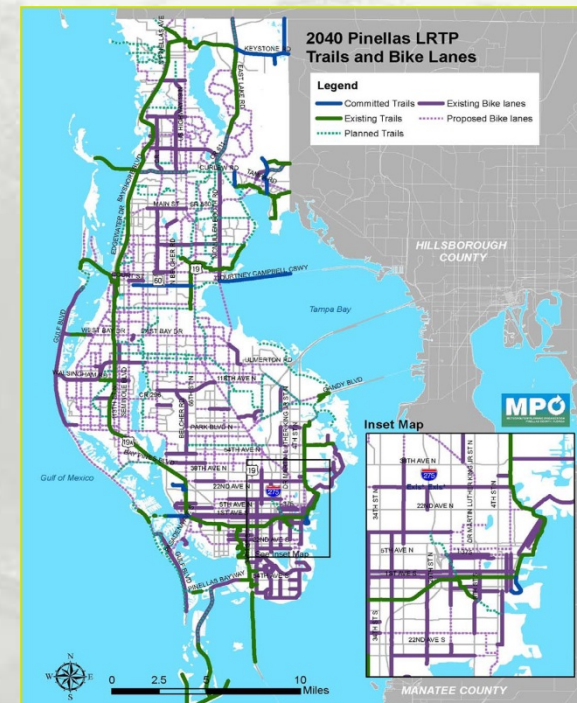
Bridge Inspections and Monitoring



PROJECT OBJECTIVES



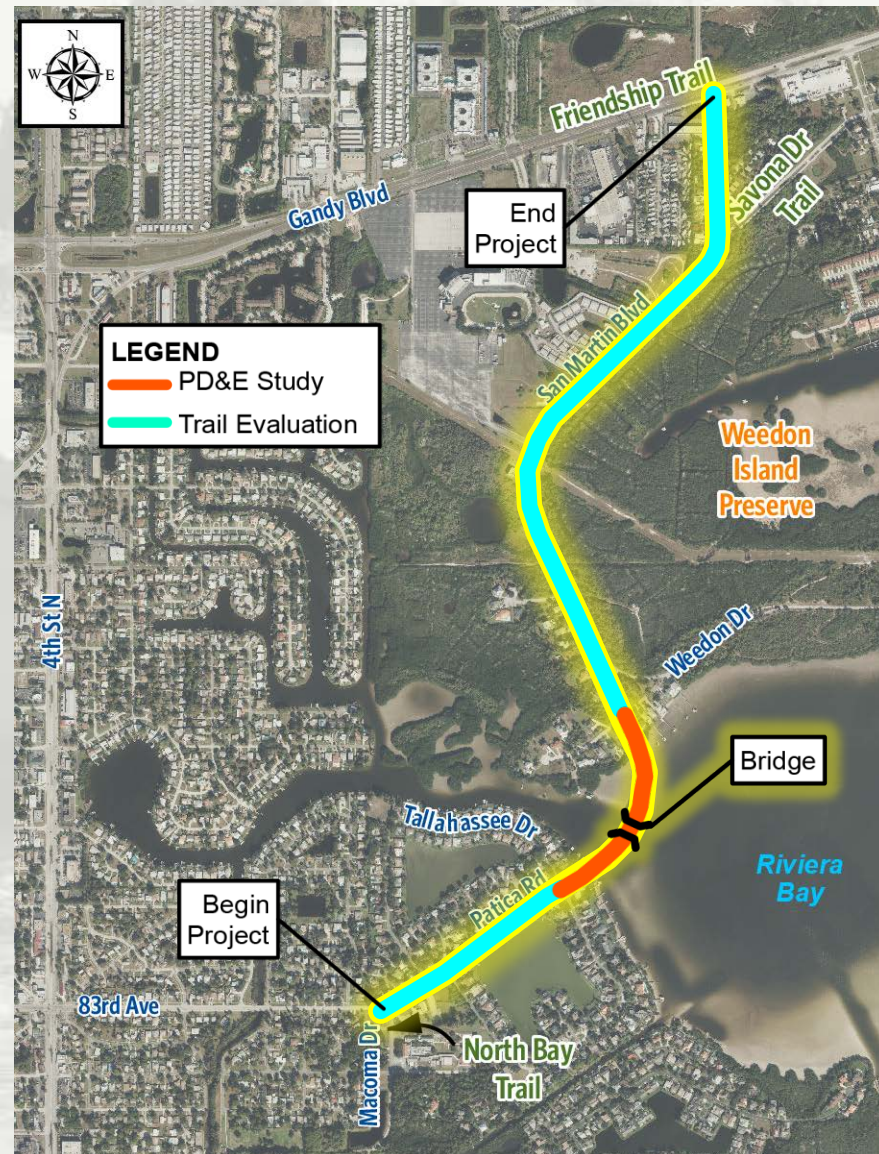
- Address the bridge deficiencies
 - Built in 1962 (53 years old)
 - Does not meet current design standards for pedestrians and bicyclists per American with Disabilities Act (ADA) because of width
 - Based on 2013 bridge inspection the bridge is not structurally deficient.
- Provide trail and pedestrian features consistent with the City's Trails Program & Pinellas County 2040 Long Range Transportation Plan
 - Provide Connection from North Bay Trail (Macoma Dr.) to Friendship Trail (Gandy Blvd.)
 - Determine Bridge Configuration for Trail
 - Identify Safe Crossing Locations
- Develop Environmental Documentation Necessary to Maintain Funding Opportunities





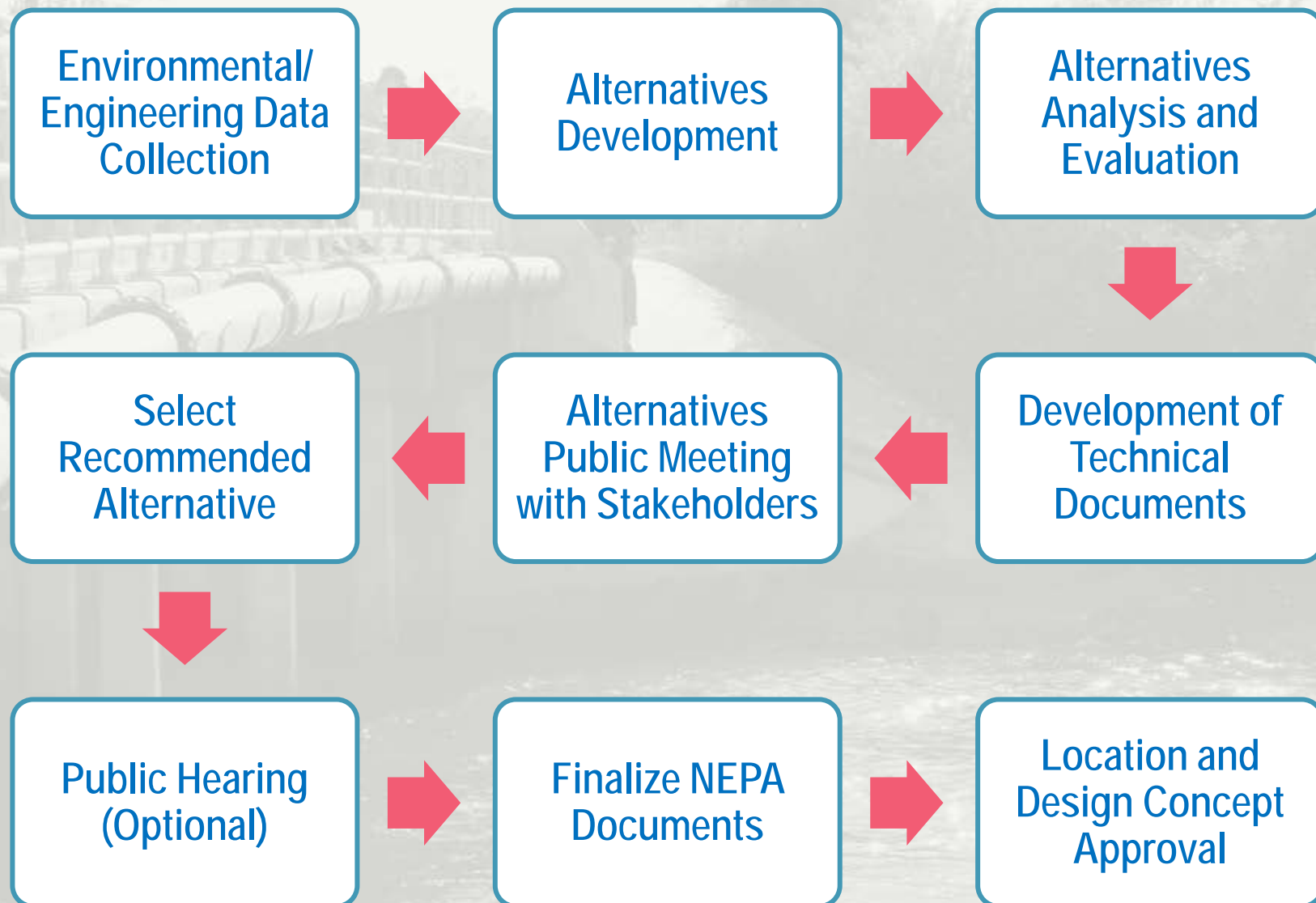
PROJECT LIMITS & SCOPE

- *Document as PD&E for Bridge Replacement and Evaluate Trail Enhancements*
 - *Simplify Level of Documentation*
 - *Address Different Funding Sources*
- **San Martin Blvd. Over Riviera Bay Bridge Replacement PD&E Study**
 - *Meet Federal National Environmental Policy Act (NEPA) Requirements*
 - *Evaluate Three Alternatives:*
 - No Build
 - Rehabilitate
 - Replacement
- **North Bay Trail Extension Evaluation**
 - *Evaluate Alignment Alternatives*
 - *Evaluate Crossing Locations*





PD&E APPROACH



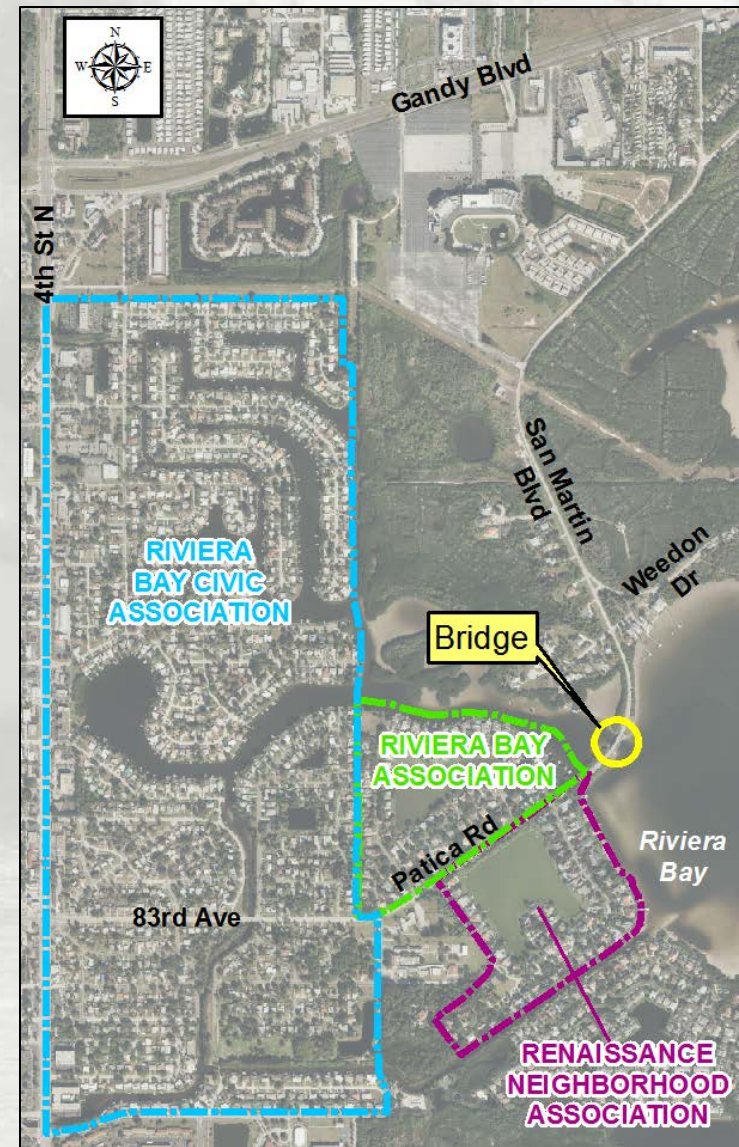


STAKEHOLDER INVOLVEMENT



■ Stakeholders

- *Pinellas County Government*
- *City of St. Petersburg*
- *Neighborhood Associations*
- *Residents*
- *Boaters*
- *Weedon Island*
- *Organized Recreational Users*
- *Duke Energy*
- *Florida Department of Transportation*
- *Tampa Bay Estuary Program*
- *Documentation Agencies*
 - Federal Highway Administration
 - US Army Corps of Engineers
 - United States Coast Guard
 - Southwest Florida Water Management District





PUBLIC OUTREACH



- Proactive Public Engagement
- Project Specific Public Involvement Program
- Alternatives Workshop
- Outreach Through Community Media Sources
- Project Website

<http://www.pinellascounty.org/sanmartinbridge>





KEY ISSUES

■ Community Considerations

- *Community Cohesion*
- *Right-of-Way Relocation Potential*
- *Archaeological and Historical Sites*
- *Channel Navigation Needs During Construction*

■ Environmental Considerations

- *Wetlands*
- *Protected Species/Habitat*
- *Section 4 (f) (Public Use Facilities)*
 - Weedon Island Preserve
 - Tampa Bay Outstanding Florida Waters

■ Physical Environment

- *Air or Water Quality Impacts*
- *Noise (Traffic & Construction)*
- *Contamination or Hazardous Materials Involvement*

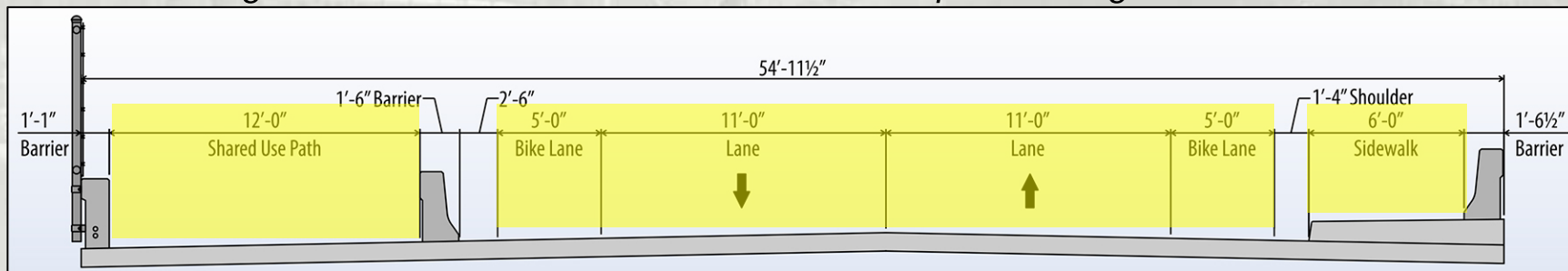




ALIGNMENT ALTERNATIVES

■ Original, East & West Shifted Alignments

- *Maintaining Original Alignment Necessitates Closing the Road During Construction*
- *Shifted Alignments Evaluated to Maintain Road Open During Construction*

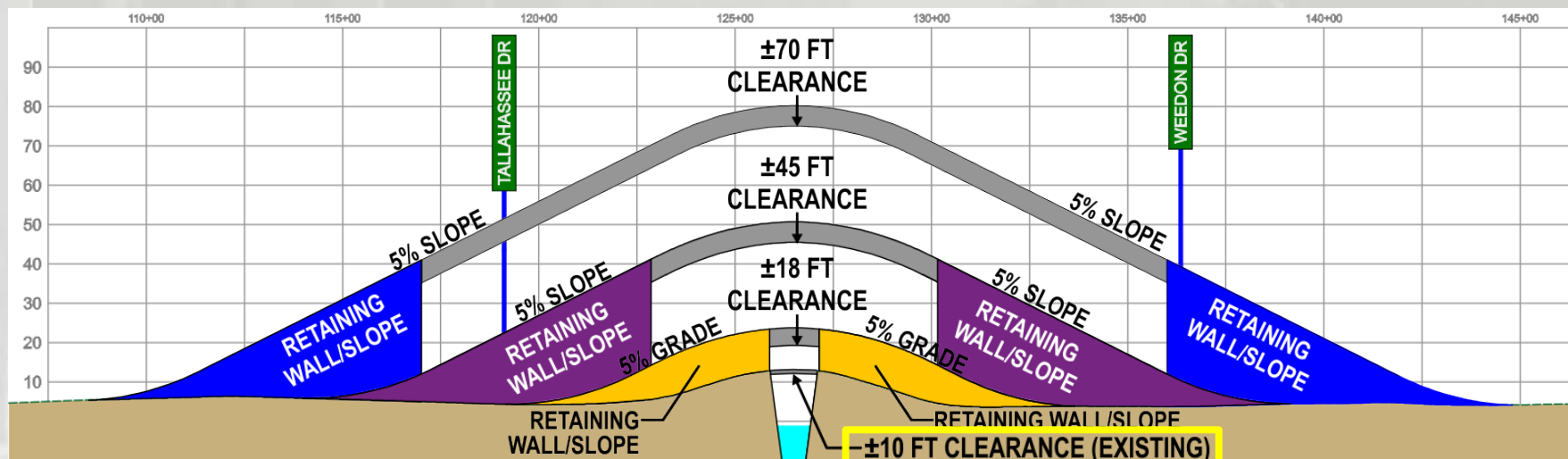




PROFILE ALTERNATIVES

- High Level (± 70 ft. of Clearance)
- Mid Level (± 45 ft. of Clearance)
- Low Level (± 20 ft. of Clearance)
- Highest Constrained (± 18 ft. of Clearance)
 - *Constrained by Adjacent Intersections (Tallahassee Drive and Weedon Drive)*
 - *Maintaining Traffic on Bridge During Construction Impacts Clearance Attainable*
- Movable Option Evaluated for Cost Comparison

Existing Clearance =
 ± 10 ft.

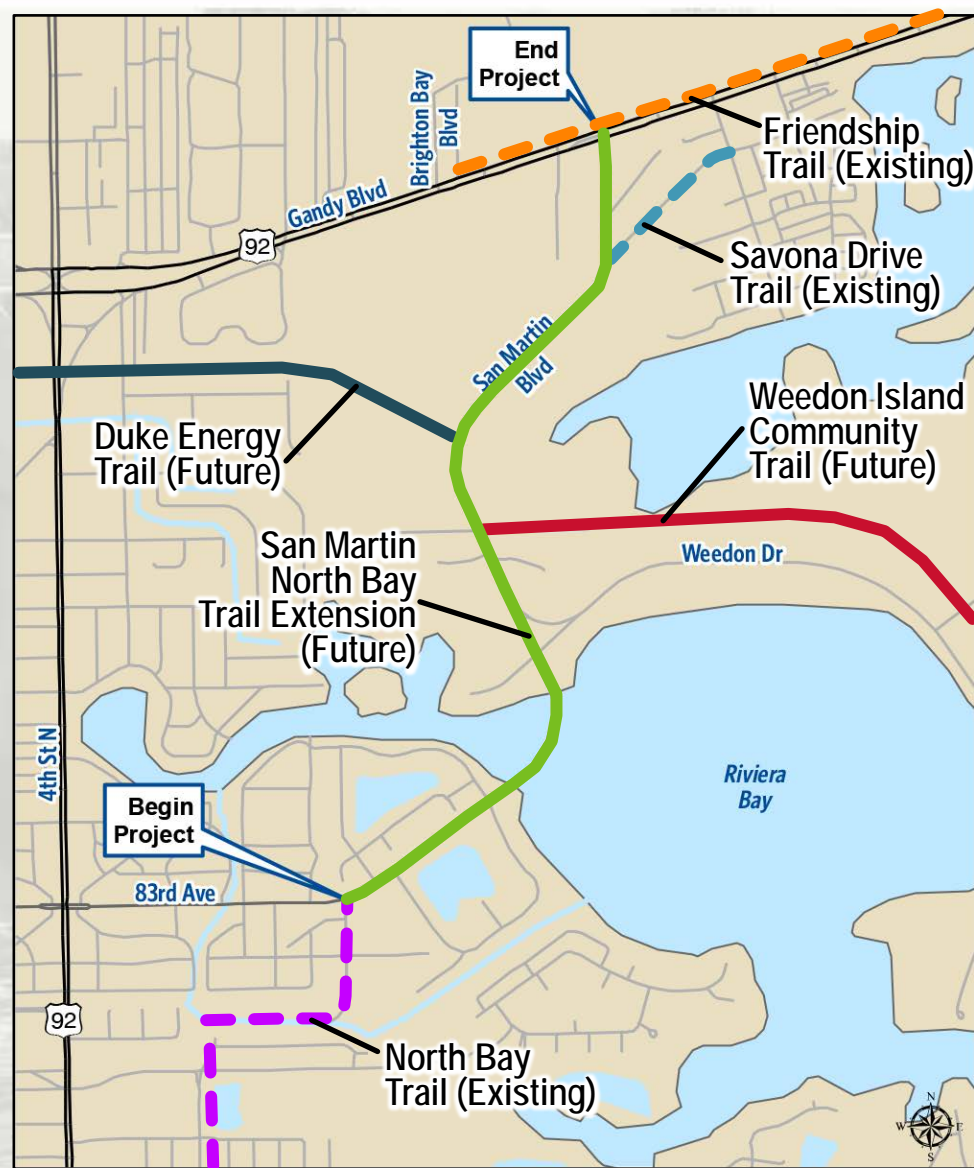




NORTH BAY TRAIL EXTENSION EVALUATION OBJECTIVES



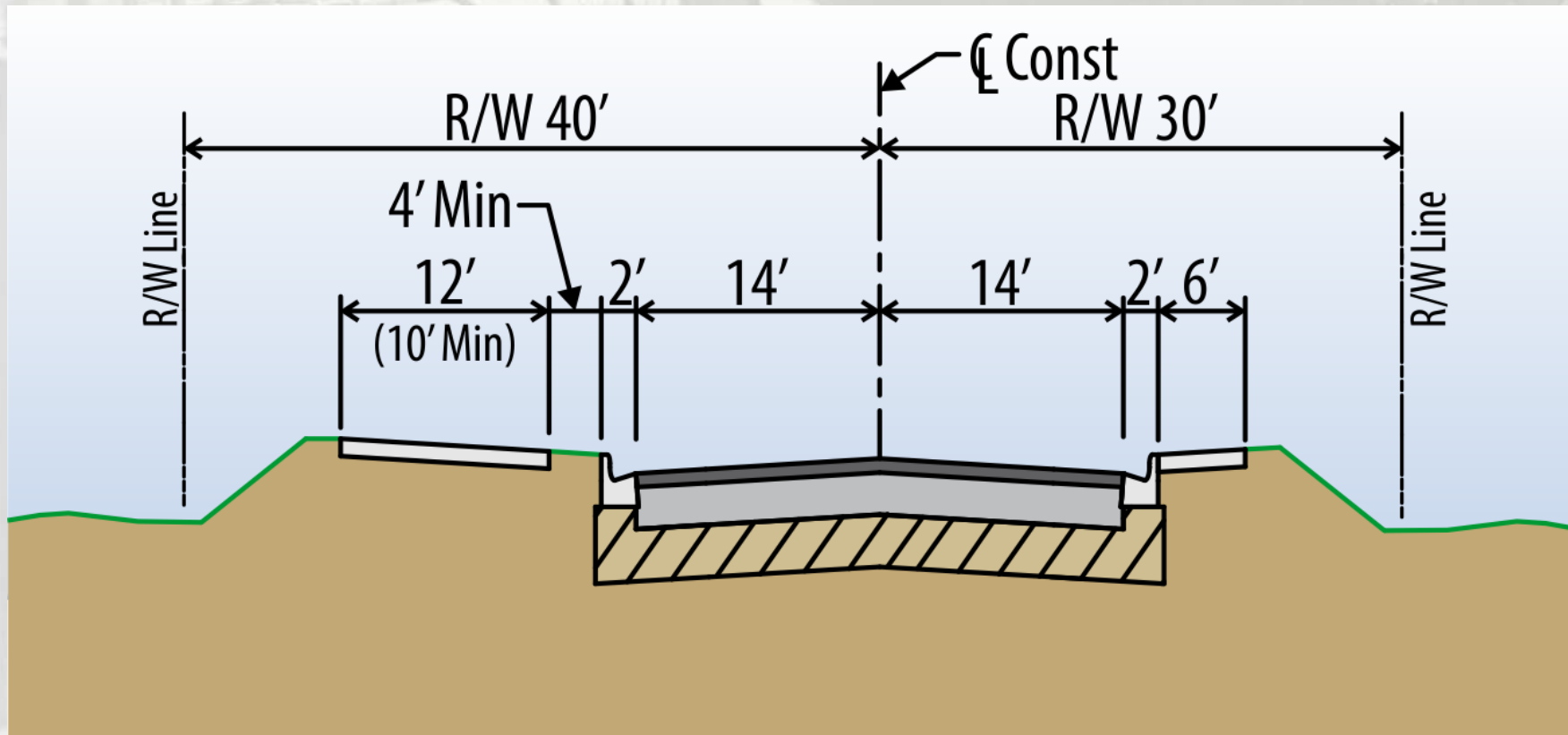
- **Determine Best Trail Configuration**
 - *Provide Connectivity to Adjacent Trails & Weedon Island Preserve*
 - *Minimize Environmental Impacts*
- **Evaluate Safe Locations for Trail Crossings**
 - *North Bay Trail Existing Terminus*
 - *Weedon Island/Duke Energy Trail*
 - *Savona Dr. Trail*
 - *Gandy Blvd. Friendship Trail*



NORTH BAY TRAIL EXTENSION EVALUATION TYPICAL SECTIONS



- Macoma Drive to Weedon Island Drive
 - Curb and Gutter Roadway with Trail on West/North due to R/W Constraints
 - Minimal Environmental Impacts
- Maintain Existing Pavement While Adding Trail and Sidewalk



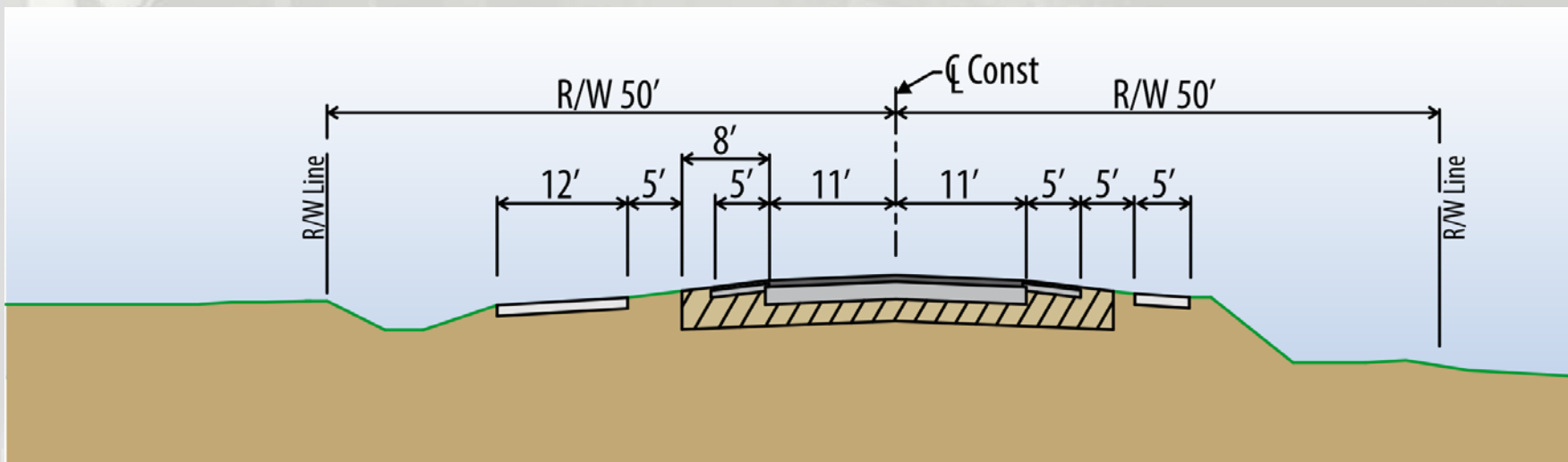


NORTH BAY TRAIL EXTENSION EVALUATION

TYPICAL SECTIONS



- Weedon Island Drive to Gandy Blvd.
 - *Rural Roadway with Unpaved Shoulders*
 - *Trail Location Affected by Environmental Constraints and Connectivity*
- Add Paved Shoulders, Trail and Sidewalk





SCHEDULE



TASK	2014	2015				2016				2017
	D	J-M	A-J	J-S	O-D	J-M	A-J	J-S	O-D	J-M
Receive Survey Data from County										
Public Involvement										
Alternatives Workshop										
Public Hearing (Optional Service)										
Engineering Data Collection										
Engineering Analysis/Documents										
Environmental Data Collection/ Analysis/Reports										
Prepare Environmental Document										
Submit Final Docs to FDOT for FHWA										
FHWA Review/Issue LDCA										
FHWA Review/Issue LDCA										

- **Construction Programmed in County CIP for 2018/2019**
 - *Schedule contingent on acquisition of 50% grant funding.*
 - *Actual construction time frame will be dependent on acquisition, timing and amount of available grant funding.*



QUESTION & ANSWER



CONTACT INFORMATION

Pinellas County Project Manager

Nancy McKibben, MPA

727-464-4812

nmckibben@pinellascounty.org

PROJECT WEBSITE

<http://www.pinellascounty.org/sanmartinbridge>



