

114400 North 49th Street
Clearwater, FL.

[illegible]

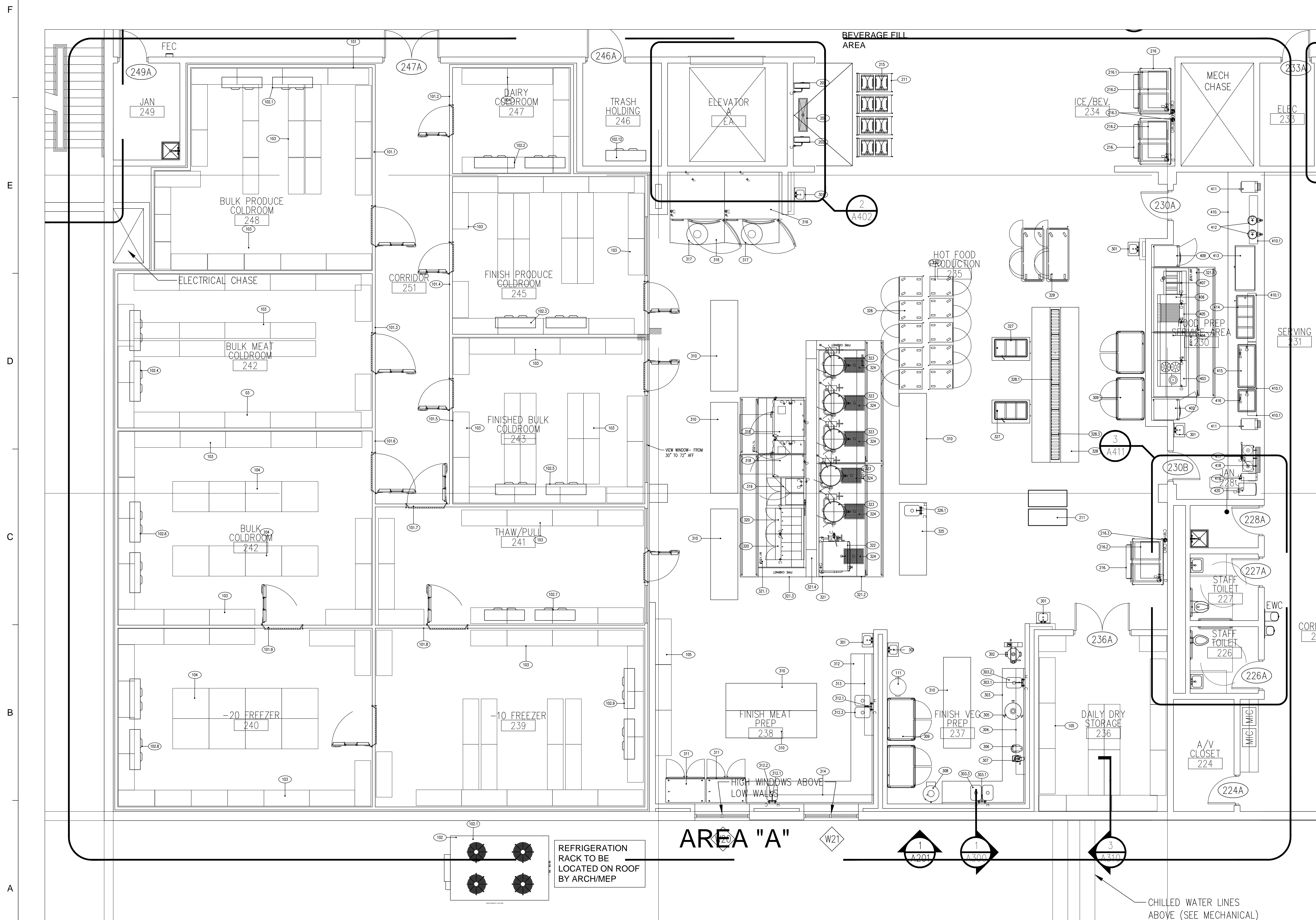
FOODSERVICE EQUIPMENT OVERALL PLAN

FS-1.1

SHEET NO.

No.	Description	Date
-----	-------------	------

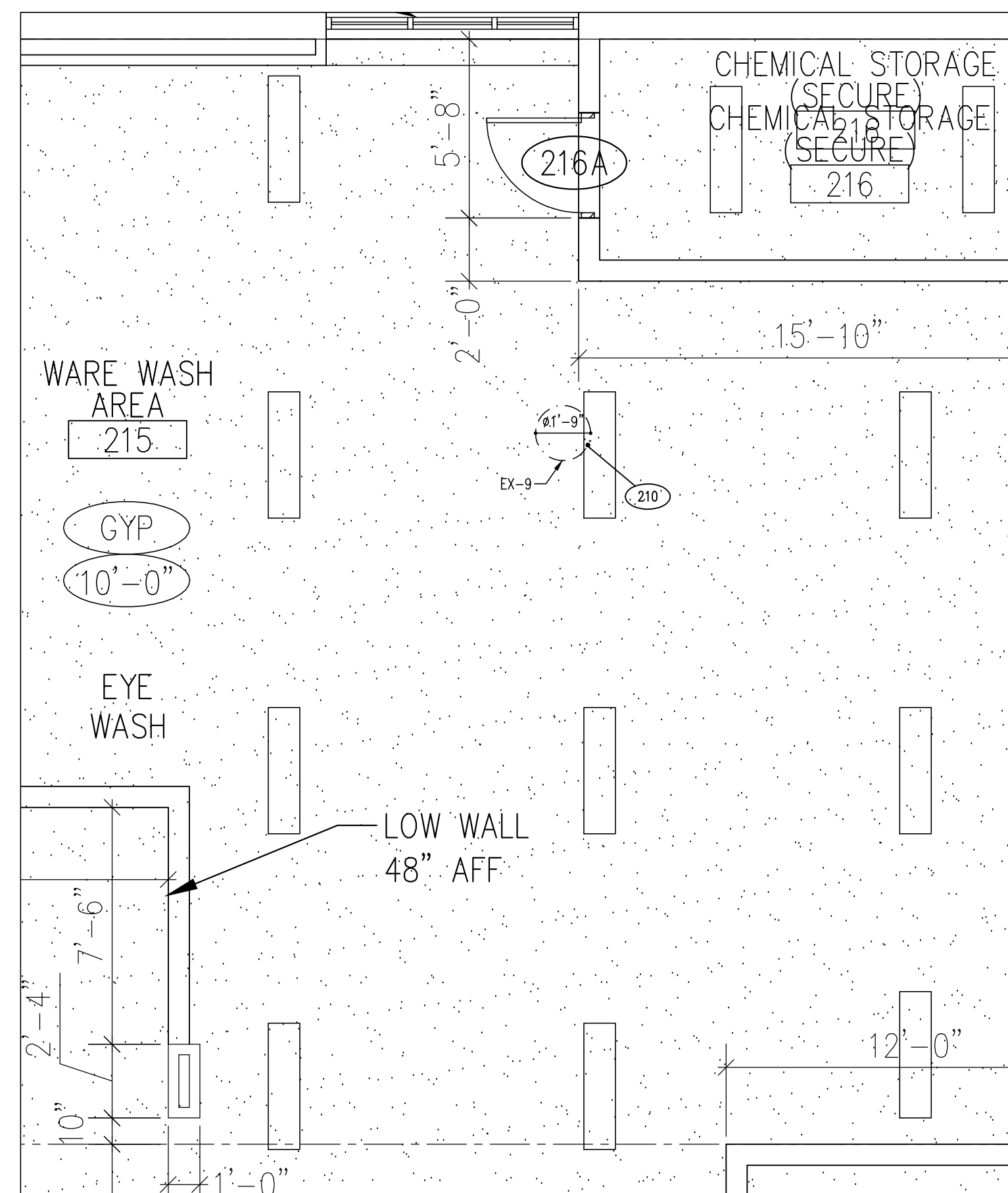
FOODSERVICE
EQUIPMENT PLAN
AREA "A"



[illegible]

FOODSERVICE EQUIPMENT SCHEDULE																				
						ELECTRICAL DATA								PLUMBING DATA						
STATUS	ITEM	QTY	DESCRIPTION	MAKE	MODEL	VOLTAGE	CYCLE	PH	AMPS	ØK	ØB	DIRECT	FLUO	SUPPLY	DRAIN	GAS	STEAM			
														HOT	COLD	DIRECT	INDIRECT	CONNECTION	BTU	CONNECTION LBS/HR
300 – PREPARATION EQUIPMENT																				
A	301	6	HAND SINK	METAWT	5681	-	-	-	-	-	-	-	-	1/2"	1/2"	1-1/2"	-	-	-	-
A	302	1	VERTICAL CUTTER/ MIXER	ROBOT COUPE	R-30	220	60	3	40	-	-	-	-	-	-	-	-	-	-	-
A	303	1	PREPARATION TABLE	FABRICATED	CUSTOM	-	-	-	-	-	-	-	-	-	-	-	-	-	-	-
A	303.1	1	SINGLE BOWL SINK	FABRICATED	CUSTOM	-	-	-	-	-	-	-	-	-	-	-	2"	-	-	-
A	303.2	1	DOUBLE BOWL SINK	FABRICATED	CUSTOM	-	-	-	-	-	-	-	-	-	-	-	2"	-	-	-
A	303.3	2	SPLASH MOUNTED FAUCET	FISHER	81094	-	-	-	-	-	-	-	-	1/2"	1/2"	-	-	-	-	-
A	304	1	WALL MOUNTED SHELF	FABRICATED	CUSTOM	-	-	-	-	-	-	-	-	-	-	-	-	-	-	-
A	305	1	SALAD DRYER	DELFIELD	SAJD-1	115	60	1	2.7	-	-	-	-	-	-	-	-	-	-	-
A	306	1	MIXER	HOBART	N50	120	60	1	2.9	-	-	-	-	-	-	-	-	-	-	-
A	307	1	VEGETABLE PREP CUTTER/ MIXER	ROBOT COUPE	R2N	120	60	1	7	-	-	-	-	-	-	-	-	-	-	-
A	308	1	POTATO PEELER	HOBART	6430	120	60	1	-	-	1	-	-	-	-	-	-	-	-	-
A	309	4	MOBILE REFRIGERATOR	CARTER HOFFMAN	PMB450	120	60	1	8.5	-	-	-	-	-	-	-	-	-	-	-
A	310	7	WORKTABLE	FABRICATED	CUSTOM	-	-	-	-	-	-	-	-	-	-	-	-	-	-	-
A	311	2	REACH-IN REFRIGERATOR	VICTORY	RS-20-S1	115	60	1	10.7	-	-	-	-	-	-	-	-	-	-	-
A	312	1	PREPARATION TABLE	FABRICATED	CUSTOM	-	-	-	-	-	-	-	-	-	-	-	-	-	-	-
A	312.1	2	DECK MOUNTED FAUCET	FISHER	81094	-	-	-	-	-	-	-	-	1/2"	1/2"	-	-	-	-	-
A	312.2	1	SINGLE BOWL SINK	FABRICATED	CUSTOM	-	-	-	-	-	-	-	-	-	-	-	2"	-	-	-
A	312.3	1	DOUBLE BOWL SINK	FABRICATED	CUSTOM	-	-	-	-	-	-	-	-	-	-	-	2"	-	-	-
A	313	1	WALL MOUNTED SHELF	FABRICATED	CUSTOM	-	-	-	-	-	-	-	-	-	-	-	-	-	-	-
A	314	1	WALL MOUNTED SHELF	FABRICATED	CUSTOM	-	-	-	-	-	-	-	-	-	-	-	-	-	-	-
A	315	1	PROOF BOX	BAXTER	PWZE	208-240	60	1	20	-	-	-	-	1/2"	-	1/2"	-	-	-	-
A	316	2	ROTATING RACK OVEN	BAXTER	OV500 GS	208-240	60	1	8.6	-	-	-	-	1/2"	-	3/8"	1 1/4"	300K	-	-
-	316	-	-	-	-	115	60	1	15	-	-	-	-	-	-	3/8"(REAR)	-	-	-	-
A	317	2	OVEN EXHAUST COLLAR	FABRICATED	CUSTOM	-	-	-	-	-	-	-	-	-	-	-	-	-	-	900 CFM
A	318	2	COMBI OVEN	ALTO-SHAAM	20-20E SG/S	208-240	60	1	-	1.4	-	-	-	1/8"	-	1 1/2"	3/4"	190K	-	-
A	319	1	PASTA COOKER	FRYMASTER	GPCRB	120	60	1	8	-	-	-	-	1/4"	1/4"	-	1 1/4"	80K	-	-
A	320	2	HOT TOP RANGE	CARLAMD	M43-3T	-	-	-	-	-	-	-	-	-	-	-	-	1 1/4"	66K	-
A	321	LOT	DEMAND CONTROL VENTILATION SYSTEM	HALTON	CUSTOM	-	-	-	-	-	-	-	-	-	-	-	-	-	-	-
A	321.1	1	EXHAUST HOOD #1	HALTON	CUSTOM	120	60	1	10	-	-	-	-	-	-	-	-	-	-	5138 CFM
A	321.2	1	EXHAUST HOOD #2	HALTON	CUSTOM	120	60	1	10	-	-	-	-	-	-	-	-	-	-	3402 CFM
A	321.3	1	FIRE SUPPRESSION SYSTEM	ANSUL	PIRANNA	120	60	1	10	-	-	-	-	3/4"	-	2"	-	-	-	-
A	321.4	1	UTILITY DISTRIBUTION SYSTEM	HALTON	CUSTOM	120-240	63	62.75	-	-	-	-	-	3/4"	3/4"	-	-	2"	2350	2"
A	321.5	1	MARVEL CONTROL PANEL	HALTON	CUSTOM	120	60	1	10	-	-	-	-	-	-	-	-	-	-	590/h
A	321.6	1	EXHAUST HOOD	HALTON	CUSTOM	120	60	1	10	-	-	-	-	-	-	-	-	-	-	1 1/2" COND. RETURN
A	321.7	1	FIRE SUPPRESSION SYSTEM	ANSUL	PIRANNA	-	-	-	-	-	-	-	-	-	-	-	-	-	-	LOCATE IN STAFF CONTROL OFFICE
A	322	1	TILT PAN	CLEVELAND	SGL-40-T1	120	60	1	1.4	-	-	-	-	1/2"	1/2"	-	-	3/4"	200K	3104 CFM
A	323	5	DIRECT STEAM KETTLE	CLEVELAND	KDL-40T	120	60	1	5	-	-	-	-	1/2"	1/2"	-	-	3/4"	88LB/h	1/2" CONDENSATE RETURN
A	324	6	FLOOR TROUGH	FABRICATED	CUSTOM	-	-	-	-	-	-	-	3"	-	-	-	-	-	-	-
A	325	1	WORKTABLE WITH SINK	FABRICATED	CUSTOM	-	-	-	-	-	-	-	-	-	-	-	2"	-	-	-
A	325.1	1	DECK MOUNTED FAUCET	FISHER	81043	-	-	-	-	-	-	-	-	1/2"	1/2"	-	-	-	-	-
A	326	10	HEATED HOLDING CABINET	PWE	TS-1826-15	120	60	1	11.3	-	-	-	-	-	-	-	-	-	-	-
A	327	2	HOT FOOD UNIT	ATLAS	CAH-3	208	60	1	12.3	-	-	-	-	-	-	-	3/4"	-	-	-
A	328	1	TRAY MAKE-UP TABLE	FABRICATED	CUSTOM	-	-	-	-	-	-	-	-	-	-	-	-	-	-	-
A	328.1	1	POWER RACEWAY	FABRICATED	CUSTOM	120-208	60-1	VERIFY	-	-	-	-	-	-	-	-	-	-	-	-
A	328.3	1	ROLLER CONVEYOR	FABRICATED	CUSTOM	-	-	-	-	-	-	-	-	-	-	-	-	-	-	-
A	329	13	HEATED TRAY CARTS	PWE	PTS-40-BHA	120	60	1	11.3	-	-	-	-	-	-	-	-	-	-	-
A	330	18	HEATED TRAY CARTS (SMALL)	PWE	PTS-3030	120	60	1	11.3	-	-	-	-	-	-	-	-	-	-	-
400 – STAFF SERVING EQUIPMENT																				
A	401	-	OPEN NUMBER	-	-	-	-	-	-	-	-	-	-	-	-	-	-	-	-	-
A	402	1	REACH-IN REFRIGERATOR	TRUE	STR1R-1S	115	60	1	4.8	-	-	-	-	-	-	-	-	-	-	-
A	403	1	COMBINATION RANGE W/ OVEN	CARLAMD	M54R	120	60	1	3.4	-	-	-	-	-	-	-	1 1/4"	155K	-	-
A	404	1	GRIDDLE	CARLAMD	M47	120	60	1	3.4	-	-	-	-	-	-	-	1 1/4"	132K	-	-
A	405	1	BROILER	CARLAMD	M24B	-	-	-	-	-	-	-	-	-	-	-	1 1/4"	60K	-	-
A	406	1	SPREADER	CARLAMD	M12ES	-	-	-	-	-	-	-	-	-	-	-	-	-	-	-
A	407	1	FRYER BATTERY WITH FILTER	FRYMASTER	FPFH255	120	60	1	8	-	-	-	-	-	-	-	1"	160K	-	-
-	408	-	OPEN NUMBER	-	-	-	-	-	-	-	-	-	-	-	-	-	-	-	-	-
A	409	1	REACH-IN FREEZER	TRUE	STR1F-1S	15	60	1	6.8	-	-	-	-	-	-	-	-	-	-	-
A	410	1	SERVICE COUNTER	FABRICATED	CUSTOM	-	-	-	-	-	-	-	-	-	-	-	-	-	-	-
A	410.1	LOT	BREATH PROTECTOR	FABRICATED	CUSTOM	-	-	-	-	-	-	-	-	-	-	-	-	-	-	-
A	411	1	TOASTER	HATCO	TQ-800H	208	60	1	16	-	-	-	-	-	-	-	-	-	-	-
A	412	2	SOUP WELLS	HATCO	PHBRN10TD W/ UNIT	120	60	1	6.7	-	-	-	-	-	-	-	3/4"	-	-	-
A	413	1	SANDWICH DISPLAY WARMER	HATCO	GR2SDS-54D	120	60	1	15.8	-	-	-	-	-	-	-	-	-	-	-
A	414	1	HOT WELL UNIT	ATLAS	WH-4	208	60	1	16.4	-	-	-	-	-	-	-	3/4"	-	-	-
A	415	1	COLD PAN	ATLAS	WCMD-4	120	60	1	6.8	-	-	-	-	-	-	-	3/4"	-	-	-
A	416	1	COLD PAN	ATLAS	WCMD-2	120	60	1	3.9	-	-	-	-	-	-	-	3/4"	-	-	-
A	417	1	COFFE URN	BUNN	U3	120-208	60	1	28	-	-	-	-	3/8"	-	-	-	-	-	-
A	418	1	BEVERAGE TROUGH	FABRICATED	CUSTOM	-	-	-	-	-	-	-	-	-	-	-	3/4"	-	-	-
A	419	1	TEA URN	BUNN	TU5Q	-120	60	1	15	-	-	-	-	3/8"	-	-	-	-	-	-
A	420	1	ICE AND WATER DISPENSER	FOLLETT	12C400A	115	60	1	13	-	-	-	-	3/8"	-	3/4"	-	-	-	-

STATUS CODES:
 "A" - PROVIDED AND INSTALLED BY GENERAL CONTRACTOR
 "B" - PROVIDED BY OWNER AND INSTALLED BY GENERAL CONTRACTOR
 "C" - PROVIDED BY OWNER AND INSTALLED BY OWNER



1. ROUTING OF EXHAUST AND RETURN AIR DUCTS BY PROJECT ARCHITECT/MECHANICAL ENGINEER. INSTALLATION BY GENERAL CONTRACTOR.
2. LOCATION OF ROOF TOP FANS, CURBS AND ELECTRICAL DISCONNECTS BY PROJECT ARCHITECT/MECHANICAL ENGINEER.
3. GENERAL CONTRACTOR SHALL PROVIDE A CONTINUOUS FIRE RATED CHASE FOR HOOD SYSTEM EXHAUST DUCTS. CONSTRUCTION AND INSTALLATION OF CHASE TO BE IN ACCORDANCE WITH ALL LOCAL, STATE AND FEDERAL CODES AND REGULATIONS.
4. REFER TO SHEETS FS-4.2 THROUGH FS-4.5 FOR ADDITIONAL ELECTRICAL AND EXHAUST SYSTEM DETAILS.

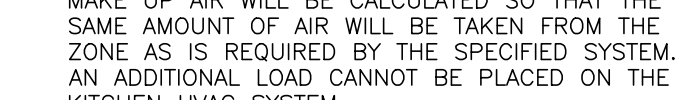
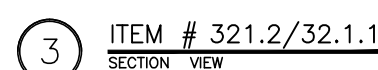
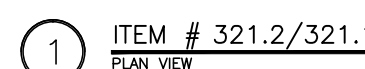
TOTAL EXHAUST CFM

TOTAL SUPPLY CFM

8265

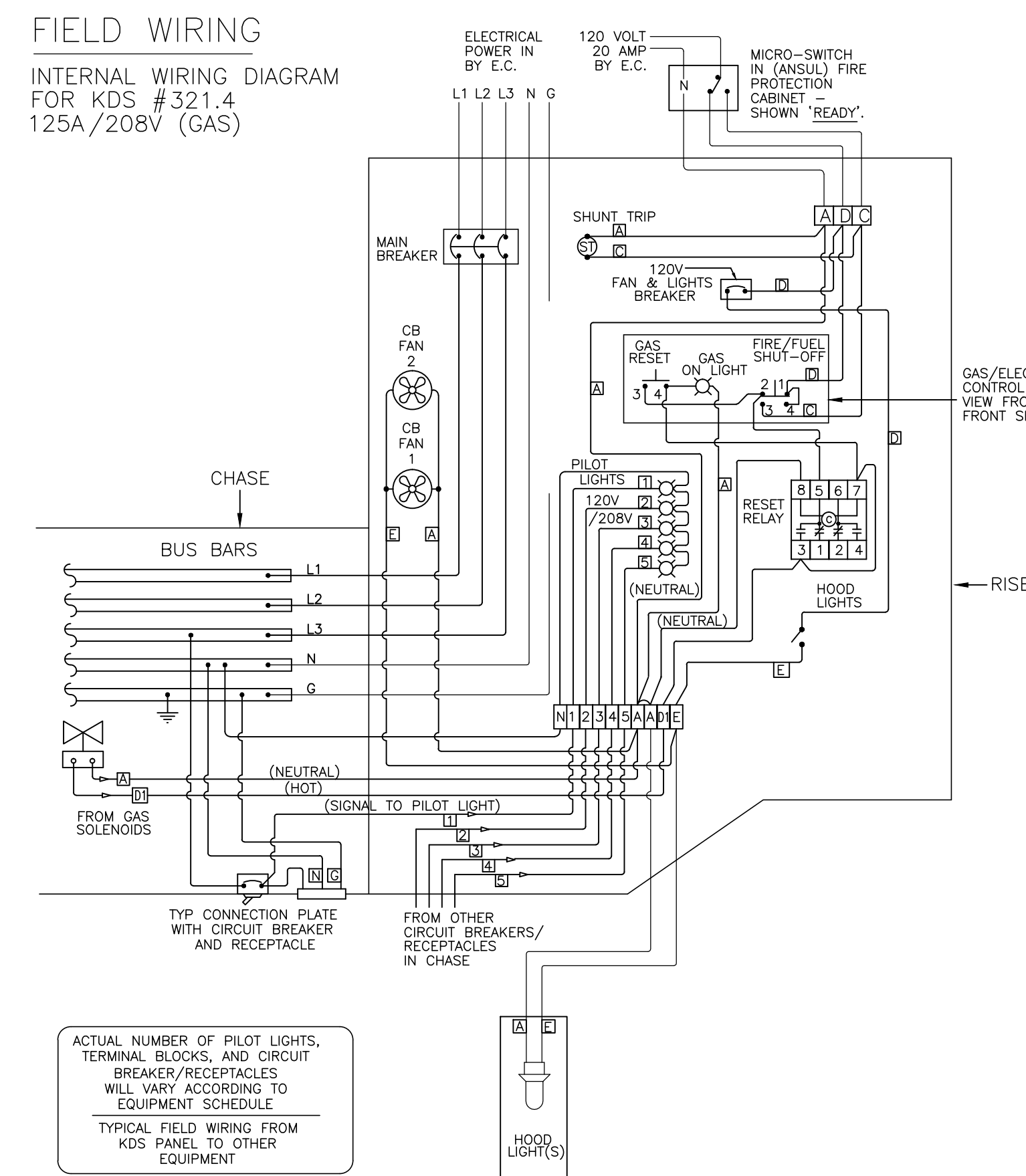
SHEET NO.

TOTAL SUPPLY CFM = 6305

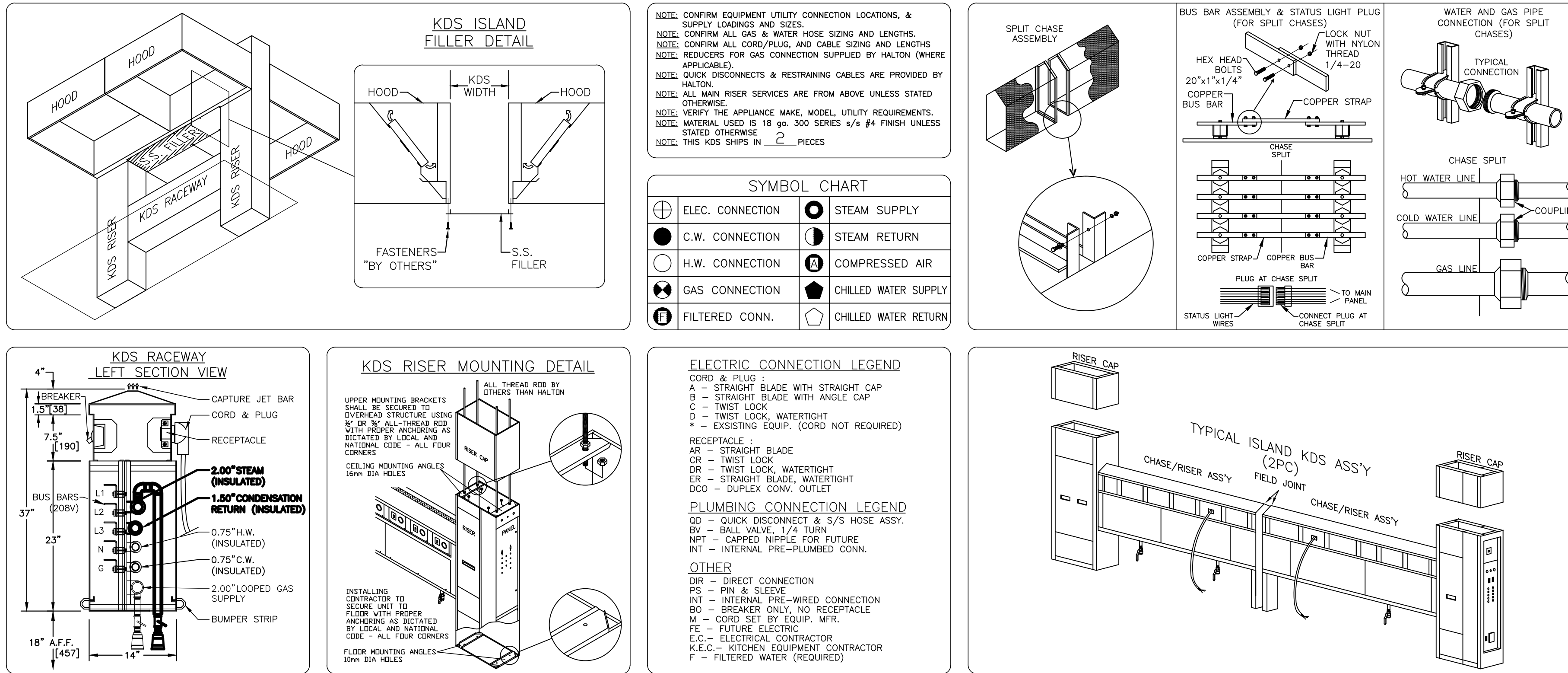


FINISHED CEILING HEIGHT A.F.F.:

FS-4.2



ITEM# 321.4		HALTON – UTILITY SCHEDULE FOR KDS																																	
ITEM NO.	EQUIPMENT DESCRIPTION TYPE / MAKE / MODEL	COND./INT./36/60										ELECTRIC				GAS				COLD WATER				HOT WATER				STEAM				CONDENSATE RETURN			
		CONN. NO.	LINE NO.	AMP	VOLTS	4W/POLE	TYPE	LEN	TYPE	UNIT	CONN. NO.	MBH	APPL. CONC.	PIPE DIA (IN)	CONN. TYPE	ITEM NO.	CONN. DIA (IN)	CONN. LEN (FT)	CONN. NO.	DIA (IN)	CONN. LEN (FT)	CONN. NO.	DIA (IN)	CONN. LEN (FT)	CONN. NO.	DIA (IN)	CONN. LEN (FT)	CONN. NO.	DIA (IN)	CONN. LEN (FT)	CONN. NO.	DIA (IN)	CONN. LEN (FT)		
318.1	CONVECTION OVEN/ GARLAND/ MP-GS-20-D	318.1E1	L1	15	120V/1	20/1	GFCI	B	5	318.1G1	80	3/4"	3/4"	BV.GD	5	318.1H1	1/8"	GD	5																
318.2	CONVECTION OVEN/ GARLAND/ MP-GS-20-D	318.2E1	L2	15	120V/1	20/1	GFCI	B	5	318.2G1	80	3/4"	3/4"	BV.GD	5	318.2H1	1/8"	GD	5																
319	PASTA COOKER/ FRYMASTER/ GPCOB	319E	L3	8	120V/1	15/1	GFCI	B	5	319G	80	3/4"	3/4"	BV.GD	5	319C	1/4"	GD	5	319H	1/4"	GD	5												
320.1	RANGE/ GARLAND/ M43-3T	320.1E	L1	3.4	120V/1	15/1	GFCI	B	5	320.1G	66	1 1/4"	1 1/4"	BV.GD	5																				
320.2	RANGE/ GARLAND/ M43-3T	320.2E	L1	3.4	120V/1	15/1	GFCI	B	5	320.2G	66	1 1/4"	1 1/4"	BV.GD	5																				
322.1	TILT SKILLET/ CLEVELAND/ SGL-40-T1	322.1E	L1	1.4	120V/1	15/1	GFCI	B	5	322.1G	200	3/4"	3/4"	BV.GD	5	322.1C	1/2"	GD	5	322.1H	1/2"	GD	5												
322.2	TILT SKILLET/ CLEVELAND/ SGL-40-T1	322.2E	L2	1.4	120V/1	15/1	GFCI	B	5	322.2G	200	3/4"	3/4"	BV.GD	5	322.2C	1/2"	GD	5	322.2H	1/2"	GD	5												
322.3	TILT SKILLET/ CLEVELAND/ SGL-40-T1	322.3E	L3	1.4	120V/1	15/1	GFCI	B	5	322.3G	200	3/4"	3/4"	BV.GD	5	322.3C	1/2"	GD	5	322.3H	1/2"	GD	5												
323.1	STEAM KETTLE/ CLEVELAND/ KDL-40T	323.1E	L3	5	120V/1	15/1	GFCI	B	5						323.1C	1/2"	GD	5	323.1H	1/2"	GD	5	323.1S	3/4"	88	10	TO 45	BV.GD	4	323.1CR	1/2"	BV.GD	4		
323.2	STEAM KETTLE/ CLEVELAND/ KDL-40T	323.2E	L3	5	120V/1	15/1	GFCI	B	5						323.2C	1/2"	GD	5	323.2H	1/2"	GD	5	323.2S	3/4"	88	10	TO 45	BV.GD	4	323.2CR	1/2"	BV.GD	4		
315	PROOFER/ BAXTER/ PW240.5L	315E	L2/13	18	208V/1	30/2	AR	B	5						315C	1/2"	GD	5																	
318.1F	WATER FILTER/ EVERPURE/ EV9797-21														318.1FC	3/4"	INT																		
318.2F	WATER FILTER/ EVERPURE/ EV9797-21														318.2FC	3/4"	INT																		



GENERAL INFORMATION	
---------------------	--

1. CONTRACTORS SHALL VERIFY ALL DIMENSIONS AND COORDINATE WITH OTHER TRADES.
2. GENERAL CONTRACTOR SHALL PREPARE THE PLATFORM, CURBED OPENINGS AND WEATHERPROOFING THE UNIT AFTER INSTALLATION.

REFRIGERATION CONTRACTOR

1. ALL COPPER TUBING TO BE REFRIGERANT GRADE, A.C.R. OR TYPE "L".
2. WELDING SHOULD BE USED FOR ALL REFRIGERANT PIPING. SOLDER SOLDER IS NOT ACCEPTABLE.
3. ALL PIPING TO BE PRESSURE TESTED WITH NITROGEN AT 300 PSI. AFTER THE CONDENSING UNIT AND COIL HAVE BEEN CONNECTED THE BALANCE OF THE SYSTEM SHALL BE LEAK TESTED WITH THE VALVES OPEN AT 200 PSI.
4. THE COMPLETE SYSTEM SHALL BE EVACUATED WITH A VACUUM PUMP. EACH UNIT SHOULD BE CHARGED TESTED AND ADJUSTED TO ASSURE OPERATION.
5. REFRIGERATION COMPRESSOR PROVIDE THE INSTRUCTIONS FOR OIL DRAIN- LINE HEATER IN FREEZER. HEATER SHALL BE CONNECTED BY ELECTRICAL CONTRACTOR.

ELECTRICAL CONTRACTOR

1. ELECTRICAL CONTRACTOR TO PROVIDE POWER FOR REFRIGERATION PACKAGE AND CONNECT CONTROL AND DEFROST SYSTEM AS CALLED FOR IN THE WIRING DIAGRAM.
2. ALL ELECTRICAL WIRING AND INSTALLATION SHALL BE IN ACCORDANCE WITH THE WIRING DIAGRAM AND LOCAL CODES.

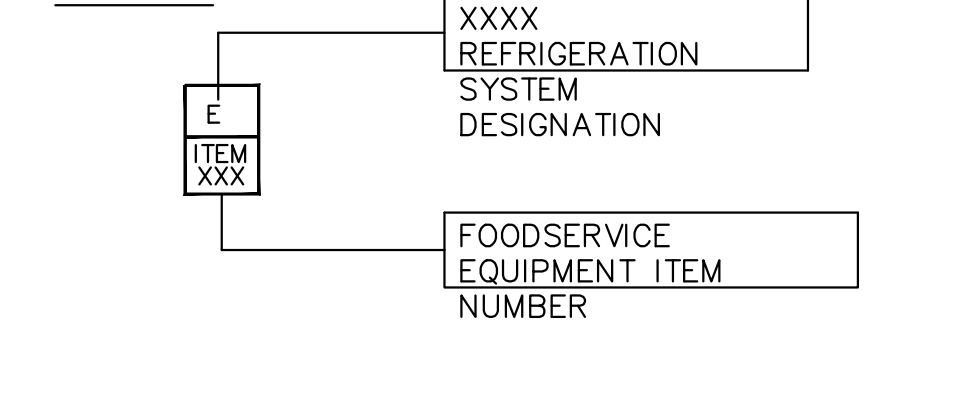
PLUMBING CONTRACTOR

1. PLUMBING CONTRACTOR TO PROVIDE A.C.R. OR "L" COPPER DRAIN LINES FOR WALK-IN REFRIGERATOR AND FREEZER, PITCHED 4" PER FOOT OF RUN. TRAP DRAIN-LINE OUTSIDE OF REFRIGERATED SPACE TO AVOID ENTRANCE OF WARM, MOIST AIR.
2. ALL PLUMBING INSTALLATION SHALL BE IN ACCORDANCE WITH LOCAL CODES.

NOTE:

THE REFRIGERATION LINE ROUTING SHOWN IS FOR SCHEMATIC PURPOSES ONLY AND DOES NOT REPRESENT THE ACTUAL ROUTING PATH OF THE REFRIGERATION LINES. THE ACTUAL ROUTING, ACCESS POINTS AND PENETRATION POINTS FOR THE REFRIGERATION LINES MUST BE COORDINATED WITH THE ARCHITECT, MECHANICAL ENGINEER, STRUCTURAL ENGINEER AND THE APPLICABLE TRADES.

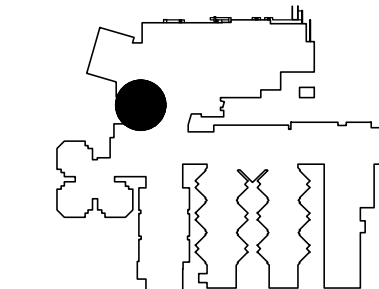
LEGEND



SEAL

PRELIMINARY DOCUMENTS
NOT FOR CONSTRUCTION

KEY PLAN



SCALE

No.	Description	Date

REVISIONS

DRAWN BY _____ SSA
APPROVED BY _____
CHECKED BY _____
DATE 3/19/2014

	TITLE
--	-------

FOODSERVICE
EQUIPMENT OVERALL
PLAN

PROJECT NO. _____

FS-5.1

SHEET NO.





F

E

D

C

B

A

LAUNDRY EQUIPMENT SCHEDULE																						
						ELECTRICAL DATA								PLUMBING DATA								
STATUS	ITEM	QTY	DESCRIPTION	MAKE	MODEL	VOLTAGE	CYCLE	PH	AMPS	KW	HP	DIRECT	CORD PLUG	SUPPLY		DRAIN		GAS		STEAM		REMARKS
														HOT	COLD	DIRECT	INDIRECT	SIZE	BTU	CONNECTION	LBS/HR	
A	L101	1	LAUNDRY SCALE	ARBEL-SOFT	CASC-FL	120	60	1	6.5	-	-	-	-	-	-	-	-	-	-	-	-	-
A	L102	1	PRE-SOAK SINK	SWANSTONE	MF2FFWH	-	-	-	-	-	-	-	-	1/2"	1/2"	1.25"	-	-	-	-	-	-
A	L103	1	EYEWASH STATION	HAWS	7260H-7220B	-	-	-	-	-	-	-	-	-	1/2"	1 1/2"	-	-	-	-	-	-
C	L104	1	DETERGENT SYSTEM	BY VENDOR	-	120	60	1	20	-	-	-	-	-	-	-	-	-	-	-	-	-
A	L105	8	MOBILE WORK TABLES	FABRICATED	CUSTOM	-	-	-	-	-	-	-	-	-	-	-	-	-	-	-	-	-
A	L106	36	SOILED LINED CART	LUXOR	HL14	-	-	-	-	-	-	-	-	-	-	-	-	-	-	-	-	-
A	L107	12	CLEAN LINEN CART	MEESE	95PSL	-	-	-	-	-	-	-	-	-	-	-	-	-	-	-	-	-
A	L108	2	TUNNEL WASHER	MILNOR	76028	480	60	3	35	-	-	-	-	2"	-	-	8"	-	-	2"	410	1/2" COMPRESSED AIR
A	L109	2	MEMBRANE PRESS	MILNOR	MP1640CL	480	60	3	29	-	-	-	-	-	-	-	-	-	-	-	-	-
A	L110	2	MILDATA COMPUTER CONTROL	MILNOR	M175	120	60	1	10	-	-	-	-	-	-	-	-	-	-	-	-	-
A	L111	8	TUMBLE DRYERS	MILNOR	M170	230	60	3	27	-	-	-	-	-	3/4"	-	-	1 1/2"	550K	-	-	-
A	L112	4	SHEET FEED CARTS	MEESE	F026	-	-	-	-	-	-	-	-	-	-	-	-	-	-	-	-	-
A	L113	46	SHELVING UNIT-SOLID TOP	ISS	VARIES	-	-	-	-	-	-	-	-	-	-	-	-	-	-	-	-	-
A	L114	2	SMALL PIECE FOLDER	CHICAGO DRYER	AIR CHICAGO	208	60	3	8	-	-	-	-	-	-	-	-	-	-	-	-	1/2" COMPRESSED AIR
A	L115	1	LINT COLLECTOR	CLEAN CYCLE	DLF510	120	60	1	3	-	-	-	-	-	-	-	-	-	-	-	-	1 1/4" COMPRESSED AIR
A	L116	1	AIR COMPRESSOR	INGRESOLL RAND	2-2545E7.5P	230	60	1	-	-	7.5	-	-	-	-	-	-	-	-	-	-	-
A	L117	3	INMATE BREAK TABLE W/ BENCHES	FABRICATED	CUSTOM	-	-	-	-	-	-	-	-	-	-	-	-	-	-	-	-	-
A	L118	1	MOP SINK	ADVANCE	9-OP-40	-	-	-	-	-	-	-	-	-	-	2"	-	-	-	-	-	-
A	L119	1	SERVICE FAUCET	FISHER	8261	-	-	-	-	-	-	-	-	3/4"	3/4'	-	-	-	-	-	-	-
A	L120	1	S/S WALL PANEL	FABRICATED	CUSTOM	-	-	-	-	-	-	-	-	-	-	-	-	-	-	-	-	-
A	L121	1	HOSE REEL	FISHER	29629	-	-	-	-	-	-	-	-	-	1/2"	-	-	-	-	-	-	-
A	L122	1	FLOOR TROUGH	FABRICATED	CUSTOM	-	-	-	-	-	-	-	-	-	-	3"	-	-	-	-	-	-
A	L123	1	DISCHARGE CONVEYOR	MILNOR	BFVUUF01	240	60	3	15	-	-	-	-	-	-	-	-	-	-	-	-	-
B	L124	1	WASHER EXTRACTOR (EXISTING-RELOCATE)	WASHEX	125	230	60	3	VERIFY	-	-	-	-	2"	-	-	2"	-	-	-	-	EXISTING UNIT

STATUS CODES:

"A" - PROVIDED AND INSTALLED BY GENERAL CONTRACTOR

"B" - PROVIDED BY OWNER AND INSTALLED BY GENERAL CONTRACTOR

"C" - PROVIDED BY OWNER AND INSTALLED BY OWNER

GENERAL NOTES

- 1

LAUNDRY EQUIPMENT DESIGNER ASSUMES NO RESPONSIBILITY FOR CONFORMITY OF THE EQUIPMENT SHOWN ON THESE DRAWINGS TO THE REQUIREMENTS OF LOCAL AND NATIONAL CODES.
- 2

PIPING AND SERVICE CONNECTION DETAILS MAY BE IN CONFLICT WITH LOCAL AND NATIONAL CODE REQUIREMENTS. IT IS THE RESPONSIBILITY OF LICENSED MECHANICAL & ELECTRICAL ENGINEERS TO DETERMINE CONFORMITY OF THESE DRAWINGS WITH CODE.
- 3

ALL MATERIALS AND LABOR REQUIRED FOR CONNECTING AND INTERCONNECTING OF THE EQUIPMENT UNLESS SPECIFICALLY MENTIONED ELSEWHERE, TROUGH AND PIT COVERS, ANGLE IRON, LINT SCREENS AND ALL PRESSURE REDUCING VALVES SHOWN ON THESE DRAWINGS, ARE NOT SUPPLIED BY THE LAUNDRY EQUIPMENT CONTRACTOR AND MUST BE FURNISHED BY THE GENERAL CONTRACTOR /AND OR MECHANICAL CONTRACTOR
- 4

PIPING AND ELECTRICAL ROUGH-IN POINTS ARE SHOWN ON DRAWINGS. MECHANICAL & ELECTRICAL CONTRACTORS TO MAKE FINAL CONNECTION AND/OR INTERCONNECTIONS TO EQUIPMENT. REFER TO EQUIPMENT OUTLINE DIMENSION DRAWINGS AND CONNECTION SCHEDULE FOR LOCATION, SIZE AND NUMBER OF CONNECTIONS.
- 5

WITH THE EXCEPTION OF AIR VACUUM LINES, ALL PIPING HEADERS AND ELECTRICAL CONDUIT SHOULD BE RUN OVERHEAD.
- 6

IT IS RECOMMENDED THAT ALL LAUNDRY SORTING, FOLDING AREAS AND VALET BE FINISHED WITH VINYL TILE FLOORING. WASHROOM, STORAGE AND MECHANICAL ROOMS TO HAVE SEALED CONCRETE FLOORS.
- 7

GENERAL CONTRACTOR SHALL BE RESPONSIBLE FOR PROVIDING AND INSTALLING ALL NECESSARY HANGERS AND SUPPORTS FOR SPECIFIED EQUIPMENT WHERE APPLICABLE.
- 8

IT SHALL BE THE RESPONSIBILITY OF THE GENERAL CONTRACTOR TO SEE THAT CLEARED AVENUES OR PASSAGEWAYS ARE PROVIDED FOR RIGGING OF THIS EQUIPMENT. DO NOT SEAL OFF THIS AREA UNTIL ALL LARGE EQUIPMENT IS IN PLACE.
- 9

MECHANICAL CONTRACTOR SHALL FURNISH AND INSTALL ALL NECESSARY VALVES, TRAPS, TAIL PIECES, LINE STRAINERS, PRESSURE REDUCING VALVES AND VACUUM BREAKERS.
- 10

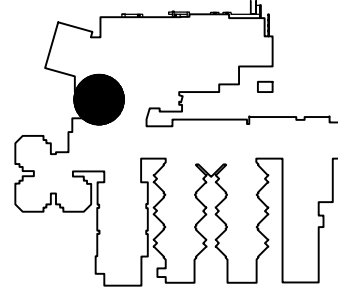
MECHANICAL AND/OR PLUMBING CONTRACTOR SHALL CONNECT ALL WATER, FUEL, GAS, STEAM AND WASTE LINES, ETC. TO LAUNDRY AND VALET EQUIPMENT; FLEXIBLE CONNECTIONS SHALL BE SUPPLIED BY OTHERS WHERE NOTED.
- 11

REJECTED HEAT LOAD IS RADIATING HEAT TO ROOM -MECHANICAL ENGINEER RESPONSIBLE FOR DESIGNING SYSTEM TO HANDLE REJECTED HEAT LOAD TO LAUNDRY AREA IN ACCORDANCE WITH OWNERS REQUIREMENTS

SEAL

PRELIMINARY DOCUMENTS
NOT FOR CONSTRUCTION

KEY PLAN



SCALE

No. Description Date

REVISIONS

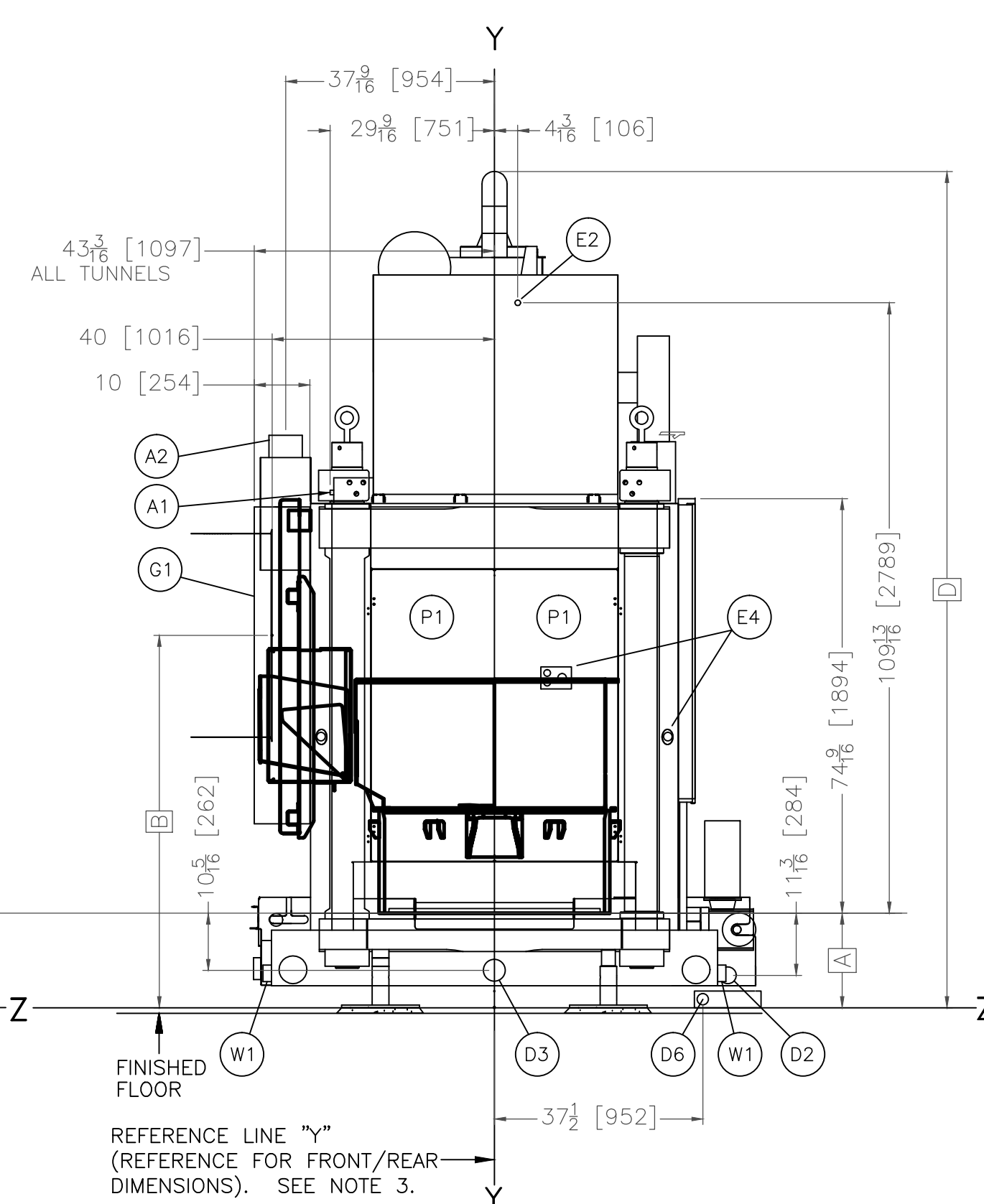
DRAWN BY SSA
APPROVED BY
CHECKED BY
DATE 3/19/2014
TITLE

LAUNDRY EQUIPMENT
PLAN

PROJECT NO.

LN-1.2

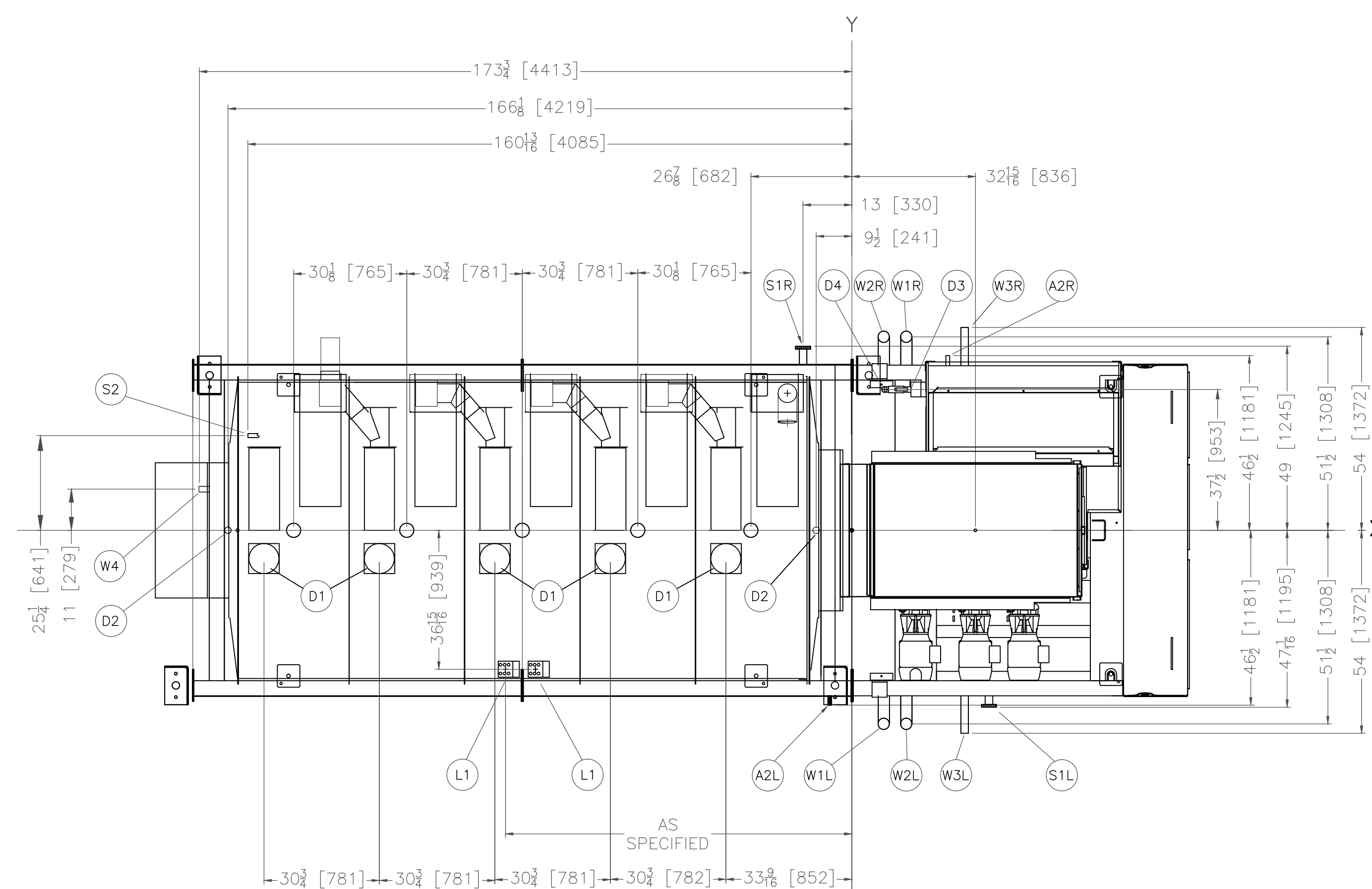
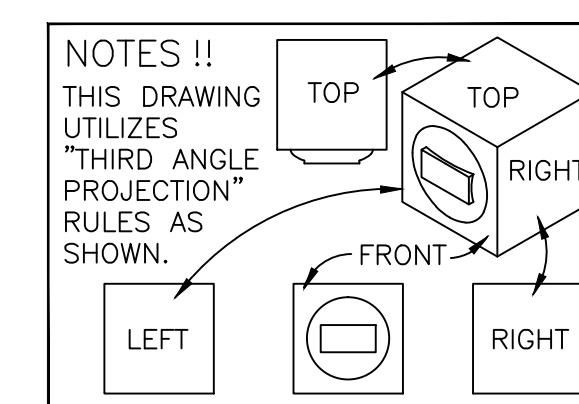
SHEET NO.



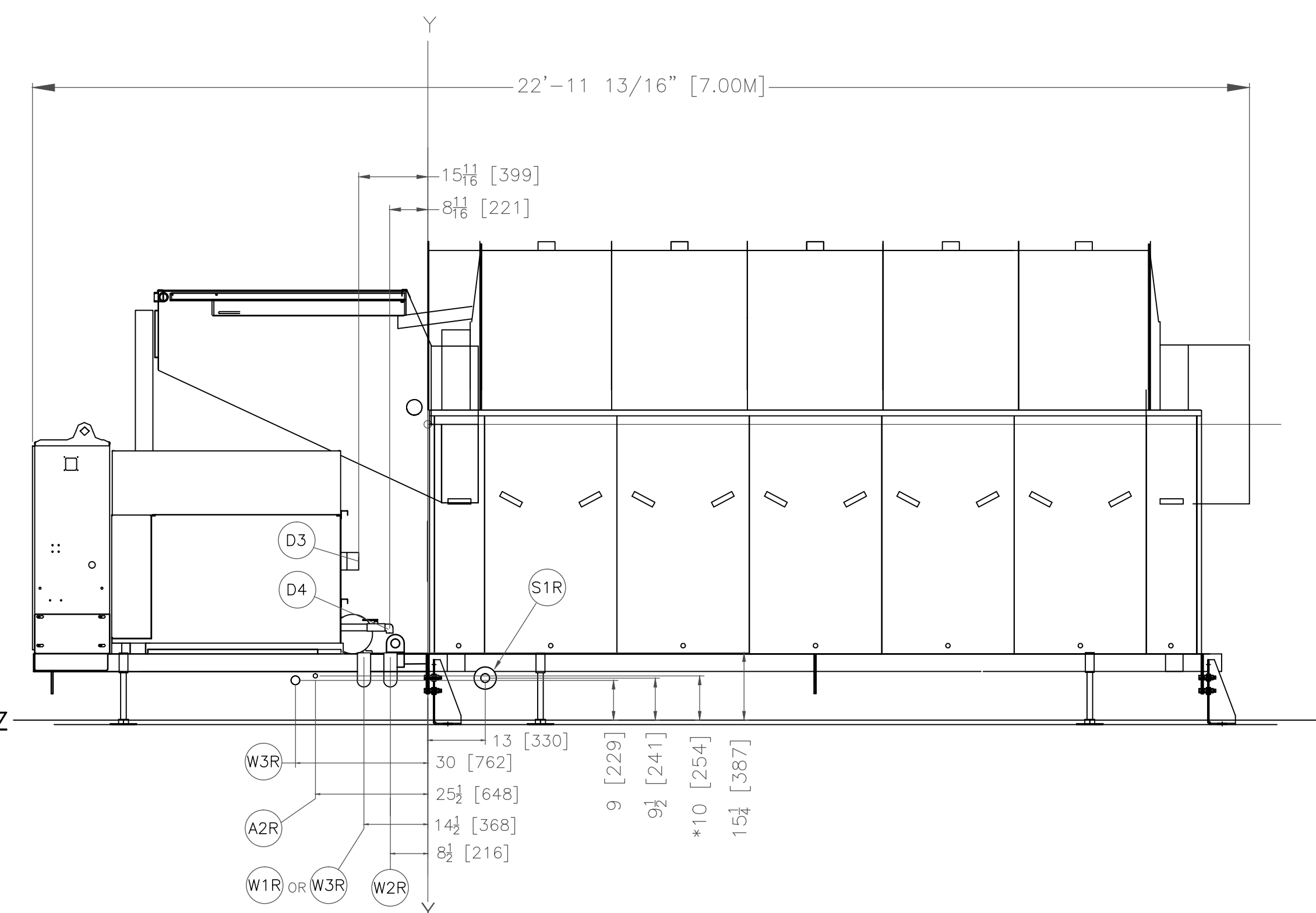
RIGHT VIEW

[illegible]

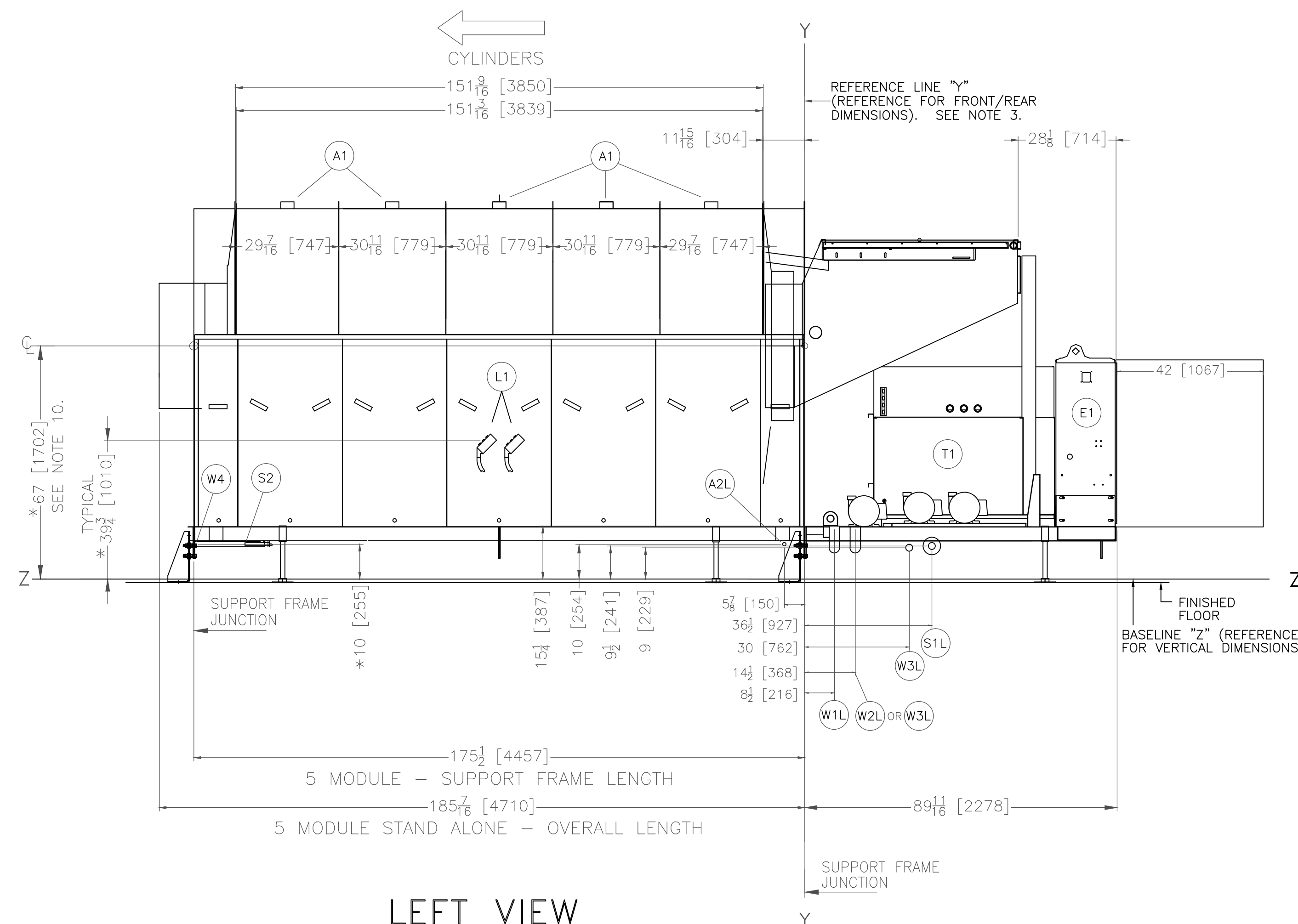
No.	Description	Date
REVISIONS		
DRAWN BY		SSA
APPROVED BY		
CHECKED BY		
DATE		3/19/2014
TITLE		



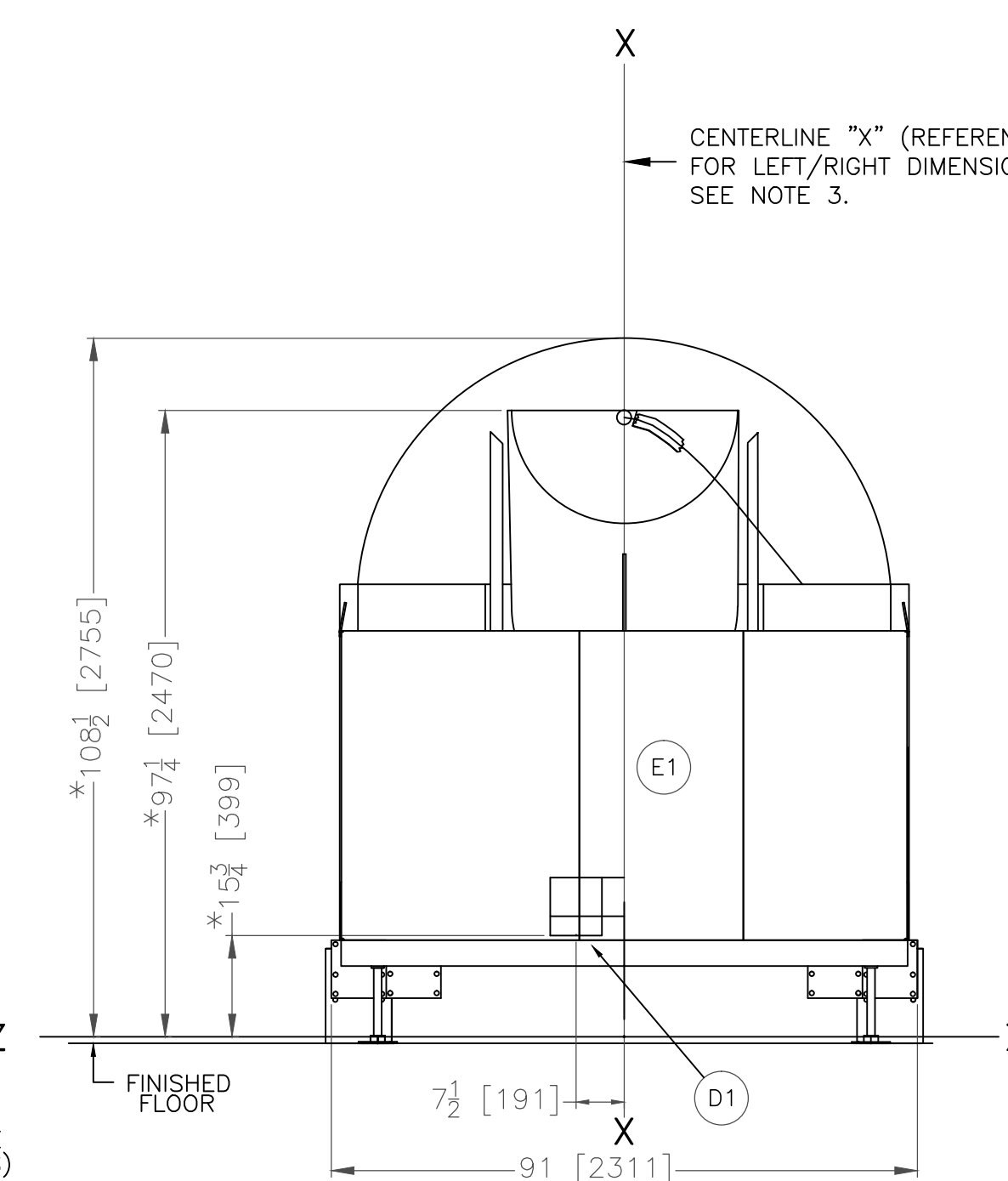
PLAN VIEW
(DRAINS AND CONNECTIONS)



RIGHT VIEW



LEFT VIEW



FRONT VIEW
LOAD END

W4	PRESS WATER TO PULSE FLOW TANK 1-1/2"NPT
W3R	RIGHT WATER 2"NPT; IF SPECIFIED, SEE NOTES 12&14.
W2R	RIGHT WATER 3"NPT; IF SPECIFIED, SEE NOTES 12&14.
W1R	RIGHT WATER 3"NPT; IF SPECIFIED, SEE NOTES 12&14.
W3L	LEFT WATER 2"NPT; IF SPECIFIED, SEE NOTES 12&14.
W2L	LEFT WATER 3"NPT; IF SPECIFIED, SEE NOTES 12&14.
W1L	LEFT WATER 3"NPT; IF SPECIFIED, SEE NOTES 12&14.
T1	PULSE FLOW TANK
S2	STEAM TRAP, STEAM CONDENSATE OUTLET, 1/2" NPT
S1R	RIGHT STEAM INLET 2" NPT, 4 BOLT FLANGED CONNECTION
S1L	LEFT STEAM INLET 2" NPT, 4 BOLT FLANGED CONNECTION
L1	LIQUID SUPPLY INLETS, SEE NOTE 13.
E1	ELECTRICAL CONTROL BOX
D4	PF TANK MANUAL DRAIN 1-1/2" NPT, PLUGGED.
D3	PF TANK OVERFLOW TO SEWER, 3" NPT CONNECTION, PVC PIPING SUPPLIED BY PMC.
D2	DRIP DRAIN 1-3/4" ID TUBING SUPPLIED. SEE NOTE 11.
D1	8" DIAMETER DRAIN VALVE, ON SPECIFIED MODULES
A2R	RIGHT MAIN AIR CONNECTION 1/2" NPT
A2L	LEFT MAIN AIR CONNECTION 1/2" NPT
A1	TYPICAL EXHAUST VENT 4"102" DIAMETER.

ITEM	LEGEND
------	--------

NOTES

15 DIRECT STEAM CONDENSATE TO THE DRAIN TROUGH. DO NOT RETURN CONDENSATE TO THE BOILER BECAUSE OF POSSIBLE CONTAMINATION FROM CHEMICALS IN THE WASH WATER.

14 WATER INLETS WILL ALWAYS BE OPPOSITE THE LOAD CONVEYOR. IF NOT SPECIFIED THE WATER INLETS WILL BE ON THE LEFT. (SEE W1L,W2L,W3L). IF LOAD CONVEYOR IS ON THE LEFT, USE RIGHT WATER INLETS (SEE W1R,W2R,W3R).

13 LIQUID SUPPLY INLETS COME WITH THREE SETS OF SIX FITTINGS. ONE SET OF 3/8" FITTINGS, ONE SET OF 1/2" FITTINGS, AND ONE SET OF PLUGS WHICH ARE SHIPPED ON MACHINE.

12 BACK FLOW PREVENTERS MUST BE INSTALLED IF LOCAL PLUMBING CODES REQUIRE THEM. RECOMMENDED MODELS ARE WATTS SERIES 009. THEY CAN BE PURCHASED LOCALLY OR THROUGH MILNOR. CONTACT MILNOR FACTORY.

11 LEAK OFF FROM DRIP DRAINS MUST BE ROUTED TO DRAIN SUMP. THESE CONNECTIONS ARE SUPPLIED WITH TUBING, MAKING THIS A FLEXIBLE CONNECTION POINT.

10 THIS DRAWING SHOWS THE G3 TUNNEL AT 67" [1702] CENTERLINE. SEE ADDITIONAL TUNNEL DRAWINGS FOR THE INTERFACE DIMENSIONS OF THE TUNNEL WHEN USED WITH SPECIFIC EXTRACTING EQUIPMENT.

8 FOR SIZE AND LOCATION OF ADJUSTABLE FEET AND BOLT DOWN BRACKETS, SEE 95-1 AND 5-MODULE SUPPORT FRAMES, SEE 0006000000.

7 FOR 5" WEIR DRAIN OPTIONS AND DIMENSIONS, SEE BDPF28G30PAE.

6 AS OF THIS WRITING, THE MINIMUM CLEARANCE REQUIRED BY U.S. NATIONAL
ELECTRIC CODES, FROM ELECTRIC BOX TO ANY OBJECT IS:
36 [914] IF OBJECT IS AN UNGROUNDED (INSULATED) WALL.
42 [1067] IF OBJECT IS A GROUNDED WALL (ie. BARE CONCRETE, BRICK, ETC.)
48 [1219] IF OBJECT IS ANY LIVE PART.
CHECK LOCAL ELECTRIC CODES FOR FURTHER RESTRICTIONS.

5. CUSTOMER TO SUPPLY CIRCUIT BREAKER OR FUSED BRANCH CIRCUIT DISCONNECT (SAFETY) SWITCHES WITH LAG TYPE FUSES FROM POWER SOURCE TO MACHINE. A SEPARATE GROUND WIRE MUST BE CONNECTED FROM DISCONNECT TO EQUIPMENT.

4 BASELINE "Z" IS THE REFERENCE FOR ALL VERTICAL DIMENSIONS. ON MACHINES WITH FIXED BASE PADS, BASELINE "Z" CORRESPONDS TO THE BOTTOM OF THE BASE PAD. ON MACHINES WITH ADJUSTABLE FEET, BASELINE "Z" CORRESPONDS TO THE BOTTOM OF THE FEET WHEN ADJUSTED SO THAT THE MACHINE IS AT ITS MINIMUM HEIGHT. ON MACHINES WITH ADJUSTABLE FEET, MEASURING THE CORRESPONDING TO

ACCEPTABLE HEIGHT. ON TRAVELING SHUTTLES, BASELINE "Z" CORRESPONDS TO THE BOTTOM OF THE BOTTOM RAIL. THE DISTANCE BETWEEN BASELINE "Z" AND THE FINISHED FLOOR WILL VARY AS REQUIRED TO ENSURE BASELINE "Z" IS HORIZONTAL AND ANY INTERFACING MACHINES REQUIRING GROUT ARE SET ON A MINIMUM 1" [25.4 mm] THICK GROUT BED.

3 USE REFERENCE LINES "X", "Y", AND "Z" TO LOCATE ALL SERVICE CONNECTIONS.
2 NUMBERS IN BRACKETS [] DENOTE DIMENSIONS IN MILLIMETERS.

1 ALL DIMENSIONS SHOWN ARE APPROXIMATE, SUBJECT TO NORMAL MANUFACTURING TOLERANCES, AND TO OCCASIONAL CHANGES WITHOUT NOTICE THROUGH REDESIGN AND/OR RELOCATION OF COMPONENTS, ETC. DO NOT USE FOR CONSTRUCTION UNLESS CERTIFIED, AND IN NO EVENT PRE-PIPE CLOSING THAN FIVE FEET FROM UNDERSTANDING MUST BE CONSIDERED FOR PLACEMENT OF MANHOLES TO THE

MACHINE. FACTORY MUST BE CONSULTED FOR DIMENSIONS IF MACHINE IS TO BE MOVED THROUGH NARROW OR LOW CORRIDORS OR OPENINGS.

ATTENTION

MOST REGULATORY AUTHORITIES (INCLUDING OSHA IN THE USA) HOLD THE OWNER/USER ULTIMATELY RESPONSIBLE TO MAINTAIN A SAFE WORKING ENVIRONMENT

OWNER/USER ULTIMATELY RESPONSIBLE TO MAINTAIN A SAFE WORKING ENVIRONMENT. ACCORDINGLY, THE OWNER/USER MUST RECOGNIZE ALL FORESEEABLE SAFETY HAZARDS, FURNISH SAFETY INSTRUCTIONS AND GUIDANCE TO ALL PERSONNEL WHO MAY COME IN CONTACT WITH THE INSTALLATION, AND PROVIDE ALL NECESSARY ADDITIONAL SAFETY GUARDS, FENCES, RESTRAINTS, DEVICES, ETC., NOT FURNISHED BY THE EQUIPMENT


MANUFACTURER OR VENDOR.

ATTENTION

THE FLOOR AND/OR OTHER SUPPORT COMPONENTS MUST HAVE SUFFICIENT STRENGTH (AND RIGIDITY WITH DUE CONSIDERATION FOR NATURAL OR RESONANT

FREQUENCY THEREOF) TO WITHSTAND THE FULLY LOADED WEIGHT OF THE MACHINE INCLUDING THE GOODS, THE WATER, AND ANY REPEATED SINUSOIDAL (ROTATING) FORCE GENERATED DURING ITS OPERATION. WRITE THE FACTORY FOR ADDITIONAL MACHINE DATA FOR USE BY A COMPETENT SOIL AND/OR STRUCTURAL ENGINEER.

76028G3 PF-5 MODULE STAND ALONE



INCHES 0 12 24 36

PELLERIN MILNOR CORPORATION

MILNOR P.O. Box 400 Kenner, LA 70063, USA, Phone 504/467-9591,
FAX 504/469-1849, Email: mktg@milnor.com
