

1. SHADED FIXTURES IN PLAN VIEW ARE EMERGENCY LIGHTING FIXTURES PROVIDED WITH AN EMERGENCY BATTERY BACK-UP SOURCE.
2. VERIFY COLOR/FINISH OF ALL FIXTURES WITH THE ARCHITECT.
3. SINGLE FIXTURE LISTED IN SCHEDULE. ALL EQUIVALENT FIXTURES SHALL MEET OR EXCEED THE PERFORMANCE OF FIXTURES LISTED IN LIGHTING FIXTURE SCHEDULE.

[illegible]

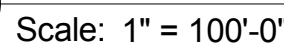
DRAWN BY	JME
APPROVED BY	GAC
CHECKED BY	GAC
DATE	03/19/2014

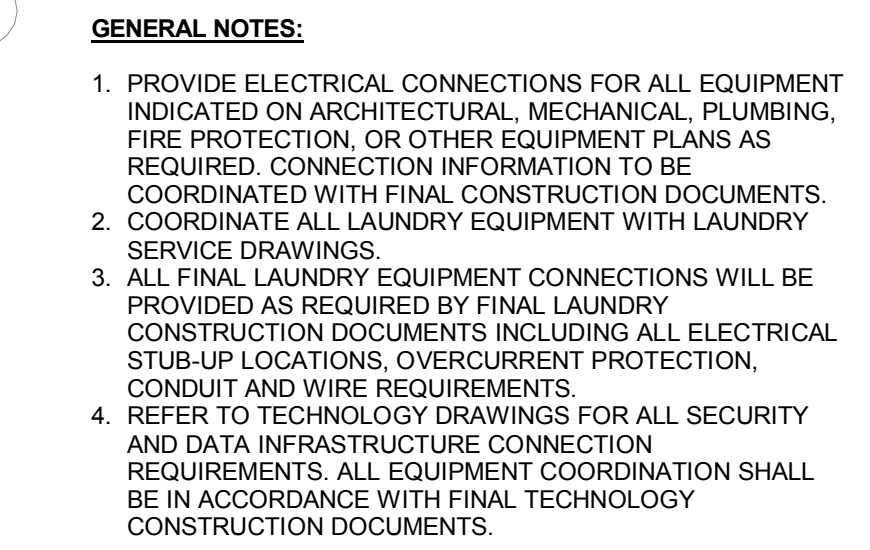
ELECTRICAL SITE PLAN

PROJECT NO.	5005710
-------------	---------

E-001

SHEET NO.



[illegible]

No.	Description	Date
REVISIONS		
DRAWN BY		JMB
APPROVED BY		GAC
CHECKED BY		GAC
DATE		03/19/2014

FIRST FLOOR POWER PLAN

E-110

SHEET NO.

Pinellas County
Pinellas County Jail Phase I
Infrastructure Criteria Package - Drawings
114400 North 49th Street
Clearwater, FL.

SEAL

PRELIMINARY DOCUMENTS
NOT FOR CONSTRUCTION

KEY PLAN

SCALE

$$1/8'' = 1'-0''$$
[illegible]

REVISIONS

DRAWN BY	JMB
APPROVED BY	GAC
CHECKED BY	GAC
DATE	03/19/2014

TITLE

FIRST FLOOR LIGHTING PLAN

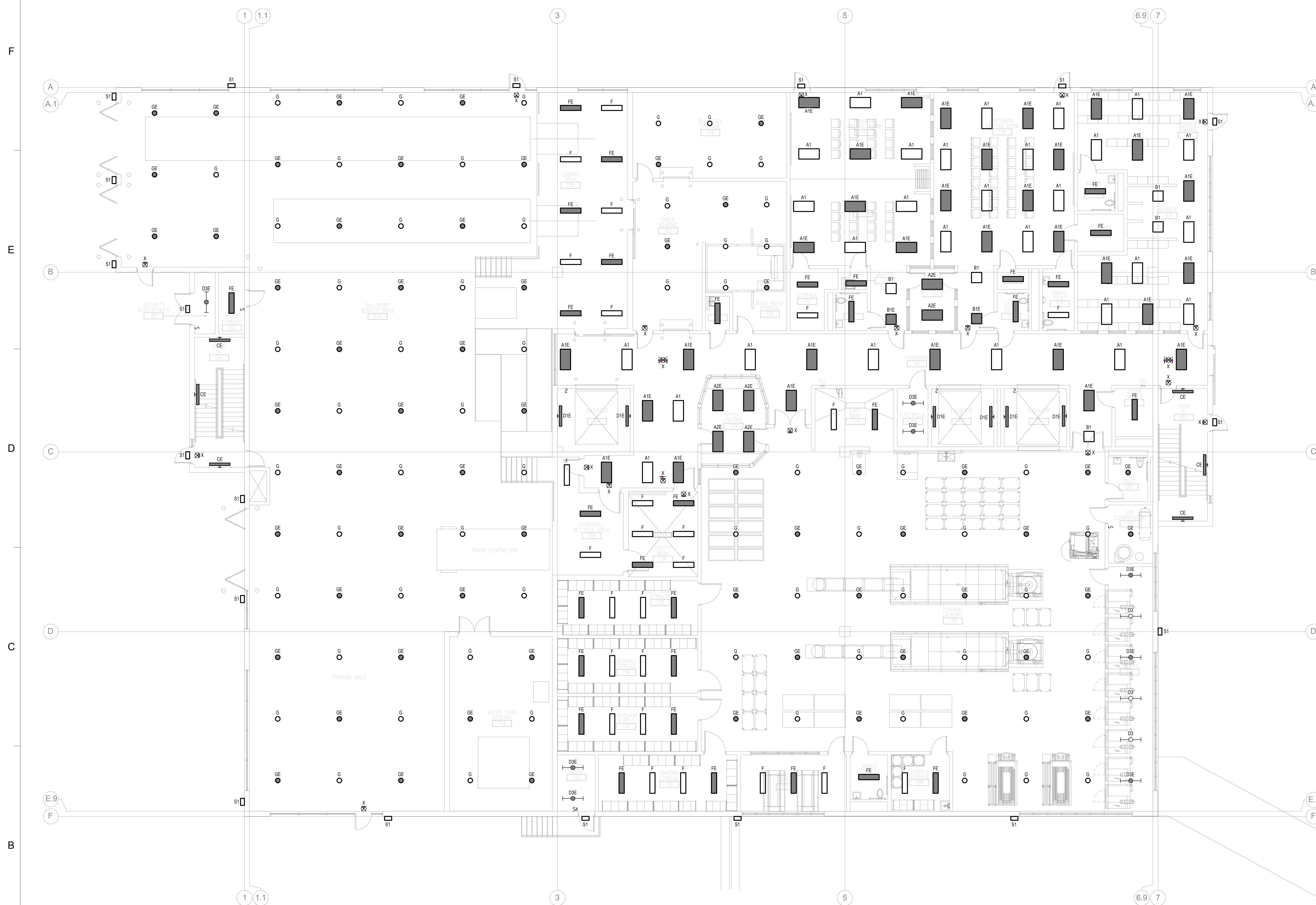
PROJECT NO.	50057109
-------------	----------

E-111

SHEET NO.

GENERAL NOTES:

1. REFER TO REFLECTED CEILING PLANS FOR EXACT LOCATIONS OF FIXTURES.
2. ALL LIGHTING FIXTURES SHALL BE CONTROLLED VIA RELAY CONTROL PANELS FROM THE MAIN BUILDING CONTROL/SECURITY ROOM.
3. PROVIDE UNSWITCHED CONDUCTORS TO ALL EMERGENCY LIGHTING POWER SUPPLIES IN DESIGNATED FIXTURES.
4. REFER TO SHEET E-000 FOR FIXTURE SCHEDULE.



1 FIRST FLOOR LIGHTING PLAN

Scale: 1/8" = 1'-0"

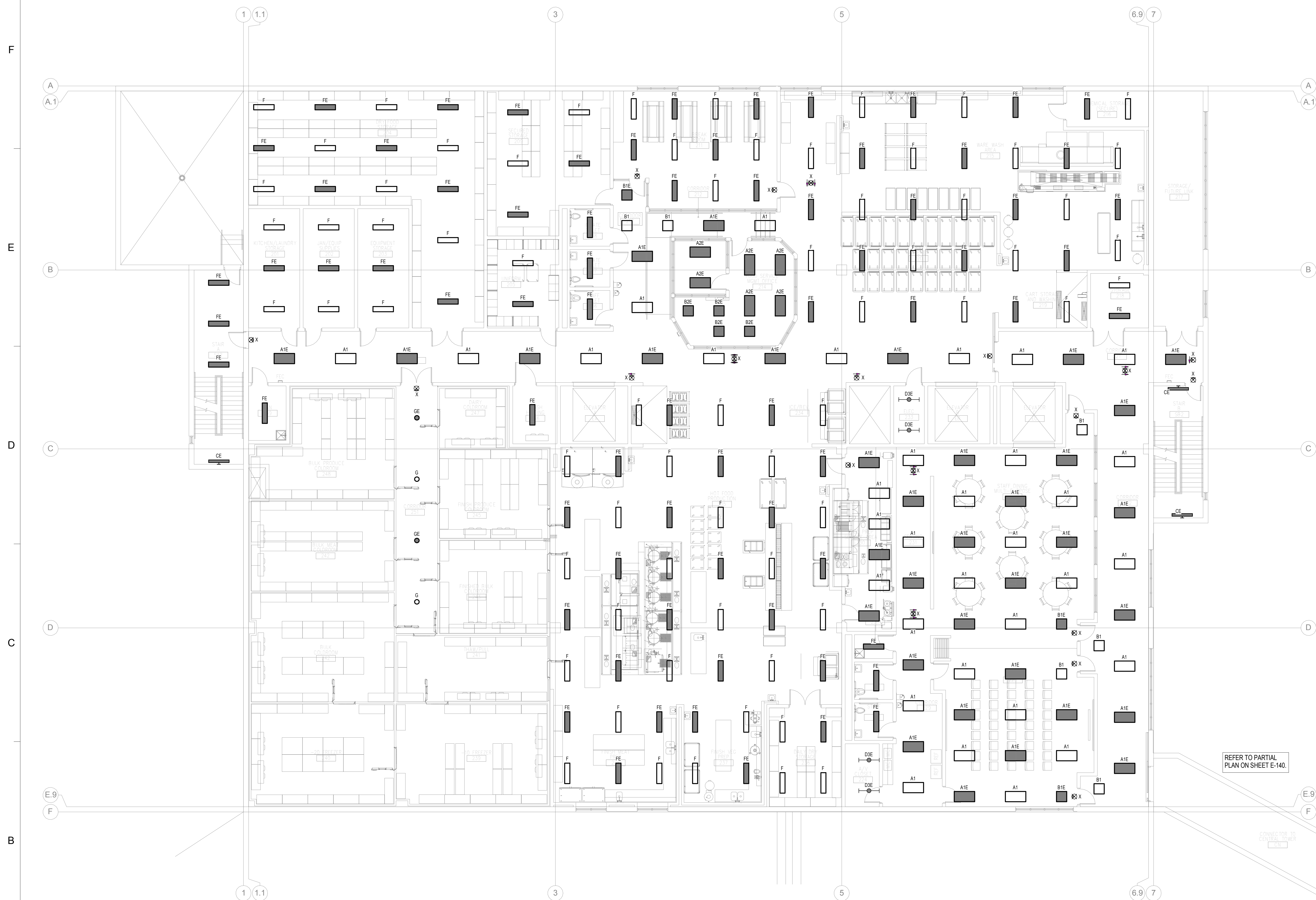


①

No.	Description	Date
-----	-------------	------

GENERAL NOTES:

1. REFER TO REFLECTED CEILING PLANS FOR EXACT LOCATIONS OF FIXTURES.
2. ALL LIGHTING FIXTURES SHALL BE CONTROLLED VIA RELAY CONTROL PANELS FROM THE MAIN BUILDING CONTROL/SECURITY ROOM.
3. PROVIDE UNSWITCHED CONDUCTORS TO ALL EMERGENCY LIGHTING POWER SUPPLIES IN DESIGNATED FIXTURES.
4. REFER TO SHEET E-000 FOR FIXTURE SCHEDULE.



1 SECOND FLOOR LIGHTING PLAN

REFER TO PARTIAL
PLAN ON SHEET E-140.



GENERAL NOTES:

1. PROVIDE ELECTRICAL CONNECTIONS FOR ALL EQUIPMENT INDICATED ON ARCHITECTURAL, MECHANICAL, PLUMBING, OR OTHER EQUIPMENT PLANS AS REQUIRED. CONNECTION INFORMATION TO BE COORDINATED WITH FINAL CONSTRUCTION DOCUMENTS.

SHEET NO.

Pinellas County

PRELIMINARY DOCUMENTS
NOT FOR CONSTRUCTION

SCALE

1/8" = 1'-0"

[illegible]

REVISIONS

DRAWN BY	JMB
APPROVED BY	GAC
CHECKED BY	GAC
DATE	03/19/2014

TLE

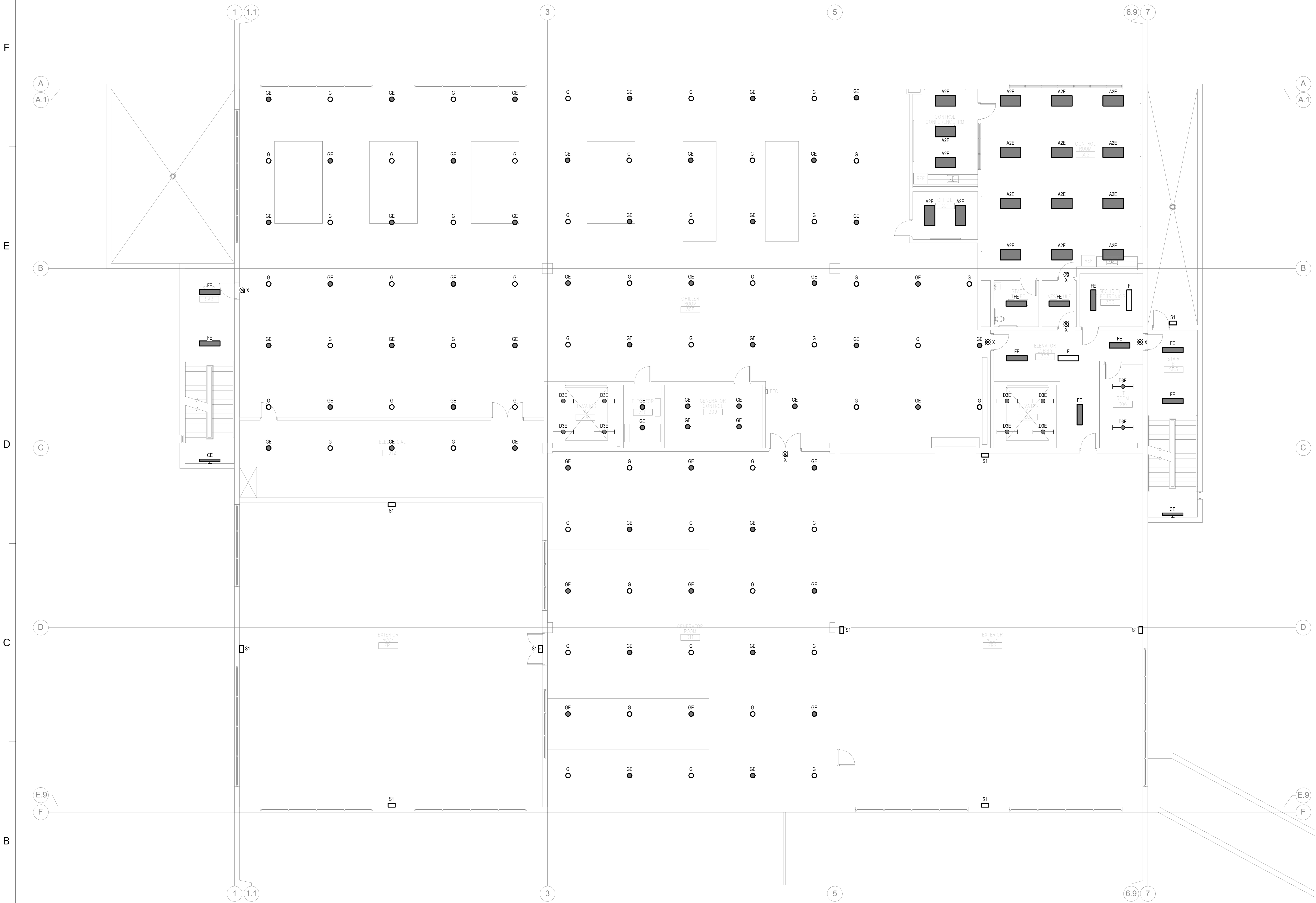
THIRD FLOOR LIGHTING PLAN

PROJECT NO.	50057109
-------------	----------

E-131

SHEET NO.

- GENERAL NOTES:**
1. REFER TO REFLECTED CEILING PLANS FOR EXACT LOCATIONS OF FIXTURES.
 2. ALL LIGHTING FIXTURES SHALL BE CONTROLLED VIA RELAY CONTROL PANELS FROM THE MAIN BUILDING CONTROL/SECURITY ROOM.
 3. PROVIDE UNSWITCHED CONDUCTORS TO ALL EMERGENCY LIGHTING POWER SUPPLIES IN DESIGNATED FIXTURES.
 4. REFER TO SHEET E-000 FOR FIXTURE SCHEDULE.



1 THIRD FLOOR LIGHTING PLAN

Scale: 1/8" = 1'-0"



GENERAL NOTES:


1. ALL NOTIFICATION DEVICES SHALL HAVE A LUMINOUS INTENSITY OF 75 CANDELA UNLESS OTHERWISE NOTED.



SHEET NO.

LIGHTNING PROTECTION GENERAL NOTES:

1. A COMPLETE LIGHTNING PROTECTION SYSTEM SHALL BE FURNISHED IN ACCORDANCE WITH NFPA 780. SYSTEM TO BE INSTALLED ACCORDING TO MANUFACTURER'S RECOMMENDATIONS AND OBTAIN A UL LETTER OF CERTIFICATION.
2. THE CONTRACTOR SHALL PROVIDE A COMPLETE ROOF COMPATIBLE LIGHTNING PROTECTION SYSTEM AS APPROVED BY ARCHITECT AND/OR ENGINEER. THE SYSTEM SHALL BE INSTALLED BY A LIGHTNING PROTECTION CONTRACTOR ACTIVELY ENGAGED IN THE INSTALLATION OF UL MASTER LABEL SYSTEMS. THE CONTRACTOR SHALL HAVE A MINIMUM OF 5 YEARS EXPERIENCE IN LIGHTNING PROTECTION INSTALLATIONS.
3. INSTALL CONDUCTORS AND COMPLEMENTARY PARTS SO COMPLETED WORK IS UNOBTRUSIVE AND DOES NOT DISTRACT FROM APPEARANCE.
4. INTERCONNECT CONDUCTORS TO PROVIDE AT LEAST TWO ELECTRIC PATHS TO GROUND. AVOID AN UPWARD DIRECTION FOR LATERAL CONDUCTORS INTERCONNECTING AIR TERMINALS. TURN RADIUS OF AT LEAST 8 INCHES AT AN INCLUDED ANGLE NOT MORE ACUTE THEN RIGHT ANGLE. SPACE DOWN CONDUCTORS AROUND BUILDINGS PERIPHERY AS SHOWN IN PLAN VIEW.5. REFER TO DETAIL SHEET FOR LIGHTNING PROTECTION DETAILS.
5. DOWN CONDUCTOR MAY UTILIZE VERTICAL BUILDING STEEL COLUMNS WHERE ACCESSIBLE. OTHERWISE, PROVIDE DOWN CONDUCTOR RUNS IN PVC AT CONCRETE COLUMNS.
6. BOND FULL SIZE CONDUCTOR TO ALL METAL OBJECTS ON ROOF. BOND ROOF DRAINS AS REQUIRED, LADDER HATCHES, ETC.
7. JOB CONDITIONS MIGHT NECESSITATE A SLIGHT VARIATION IN INSTALLATION.
8. UPON COMPLETION OF THE JOB, THE CONTRACTOR SHALL FURNISH THE OWNER WITH A UL LETTER OF CERTIFICATION.
9. PROVIDE LIGHTNING PROTECTION AT GENERATOR LOCATION AND TIE INTO SYSTEM AS REQUIRED.
10. REFER TO DETAIL SHEET FOR CONNECTION DETAILS TO ALL MECHANICAL EQUIPMENT WITH UNDERLINED TAGS SHOWN ON PLAN VIEW.
11. LIGHTNING PROTECTION SYSTEM SHALL BE COPPER.




Dewberry Architects Inc.

401 SW Water St.
Suite 701
Peoria, IL 61602
309.282.8000 Phone
309.282.8001 Fax

ARC³

architecture



ENGINEERING
FOR ARCHITECTURE

Pinellas County

Pinellas County Jail Phase I
Infrastructure Criteria Package - Drawings

114400 North 49th Street
Clearwater, FL.

SEAL

PRELIMINARY DOCUMENTS

NOT FOR CONSTRUCTION

KEY PLAN

SCALE

1/8" = 1'-0"

No.	Description	Date
REVISIONS		
DRAWN BY	_____	JMB
APPROVED BY	_____	GAC
CHECKED BY	_____	GAC
DATE	_____	03/19/2014

TITLE

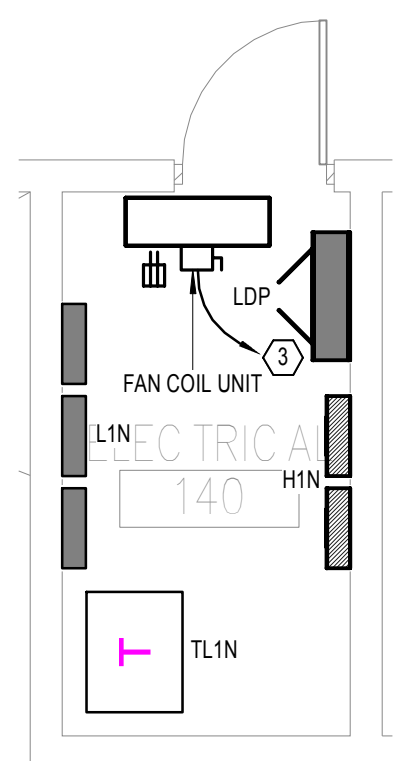
ROOF
ELECTRICAL PLAN

PROJECT NO.

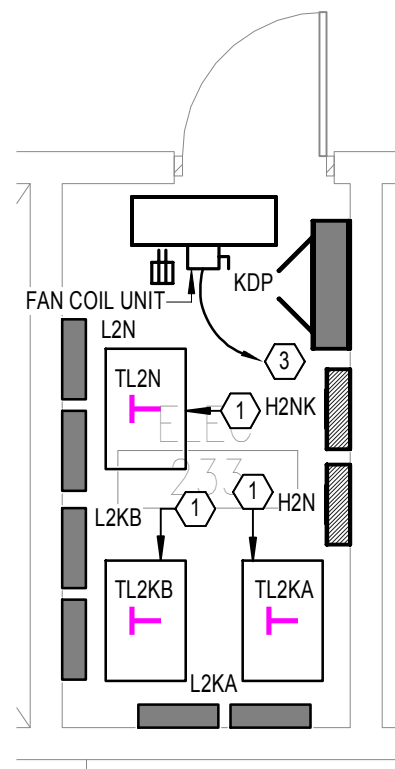
50057109

E-140

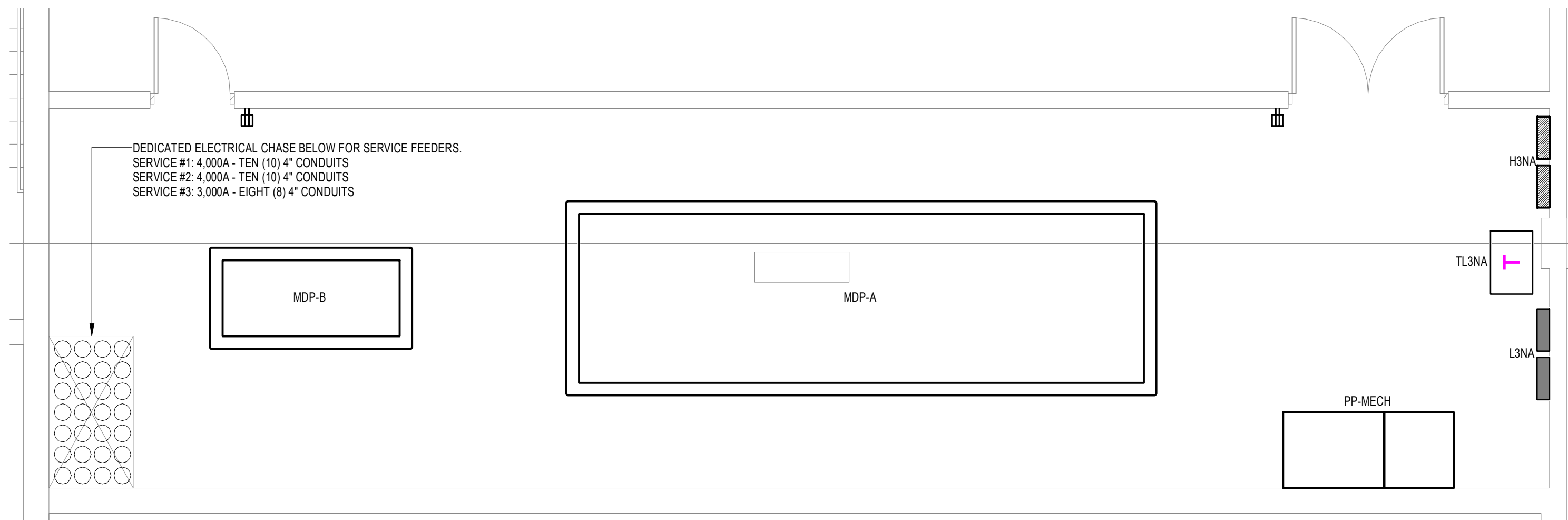
SHEET NO.



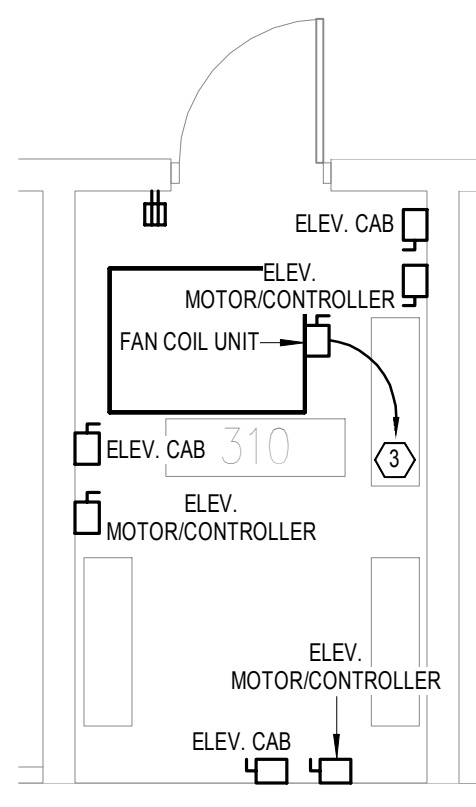
1 ENLARGED PLAN - ELEC. 140
Scale: 1/4" = 1'-0"



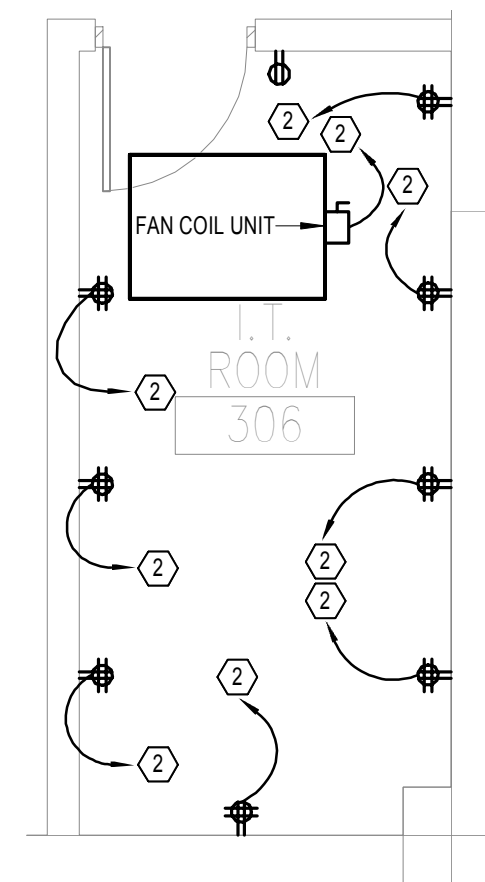
2 ENLARGED PLAN - ELEC. 233
Scale: 1/4" = 1'-0"



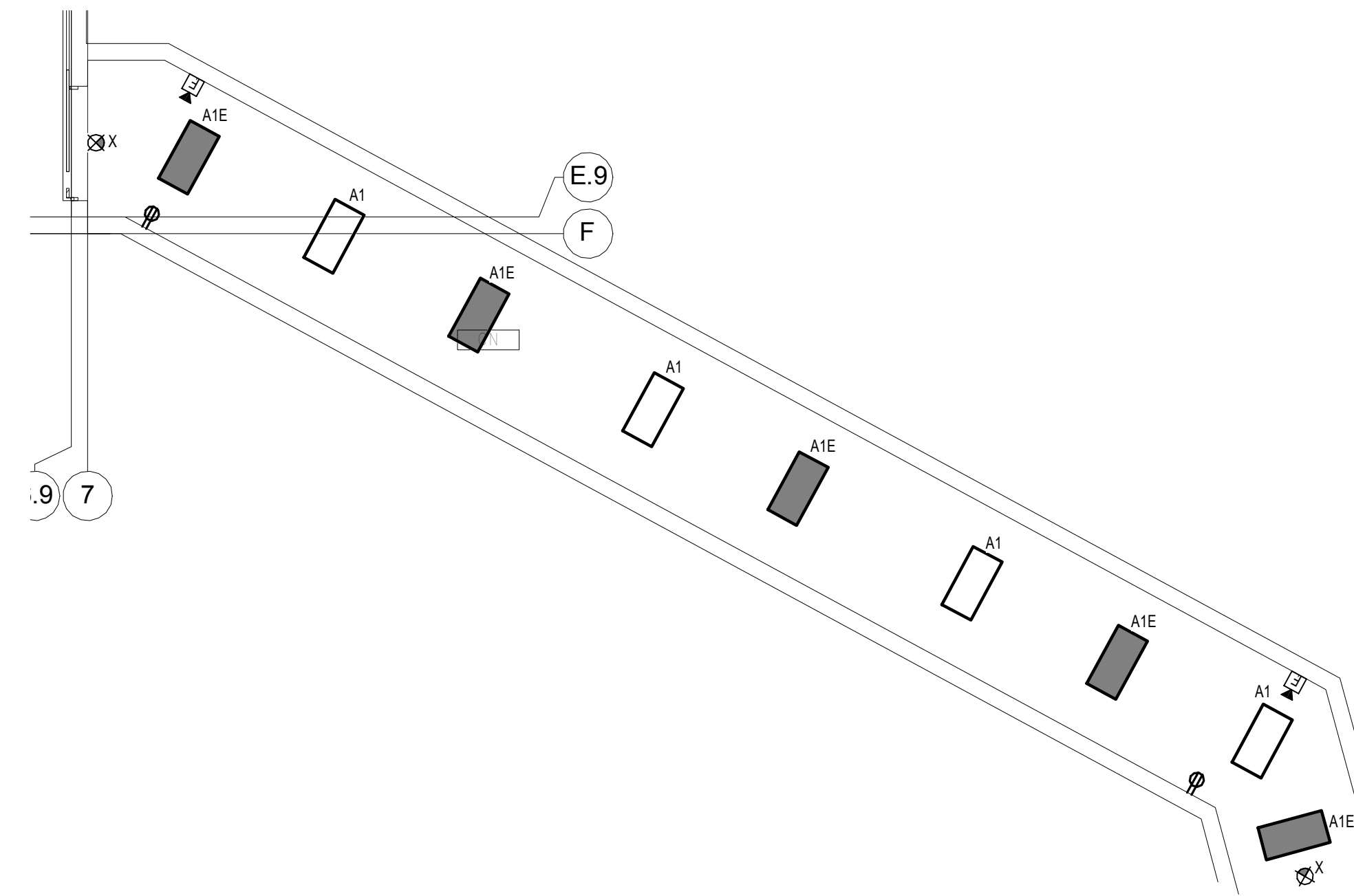
3 ENLARGED PLAN - ELECTRICAL ROOM 312
Scale: 1/4" = 1'-0"



4 ENLARGED PLAN - ELEVATOR CONTROL ROOM 310
Scale: 1/4" = 1'-0"



5 ENLARGED PLAN - I.T. ROOM 306
Scale: 1/4" = 1'-0"



6 PARTIAL ELECTRICAL PLAN - BRIDGE TO CENTRAL
Scale: 1/8" = 1'-0"

ELECTRICAL KEY NOTES	
#	KEYNOTE TEXT
1	SUSPEND TRANSFORMER FROM STRUCTURE.
2	PROVIDE DEDICATED BRANCH CIRCUIT IN 208/120V PANELBOARD, COORDINATE VOLTAGE, CIRCUIT BREAKER/CONDUCTOR AMPERE RATING, PHASE, AND CONNECTION REQUIREMENTS WITH EQUIPMENT SELECTIONS. ADJUST CONDUCTOR AND CONDUIT SIZES FOR VOLTAGE DROP (AS REQUIRED).
3	PROVIDE DEDICATED BRANCH CIRCUIT IN 480/277V PANELBOARD, COORDINATE VOLTAGE, CIRCUIT BREAKER/CONDUCTOR AMPERE RATING, PHASE, AND CONNECTION REQUIREMENTS WITH EQUIPMENT SELECTIONS. ADJUST CONDUCTOR AND CONDUIT SIZES FOR VOLTAGE DROP (AS REQUIRED).



Dewberry Architects Inc.

401 SW Water St.
Suite 701
Peoria, IL 61602
309.282.8000 Phone
309.282.8001 Fax



Pinellas County Jail Phase I
Infrastructure Criteria Package - Drawings

114400 North 49th Street
Clearwater, FL.

SEAL

PRELIMINARY DOCUMENTS
NOT FOR CONSTRUCTION

KEY PLAN

SCALE

As indicated

[illegible]

REVISIONS

DRAWN BY JMB

APPROVED BY _____ GAC

CHECKED BY _____ GAC

DATE 03/19/2014

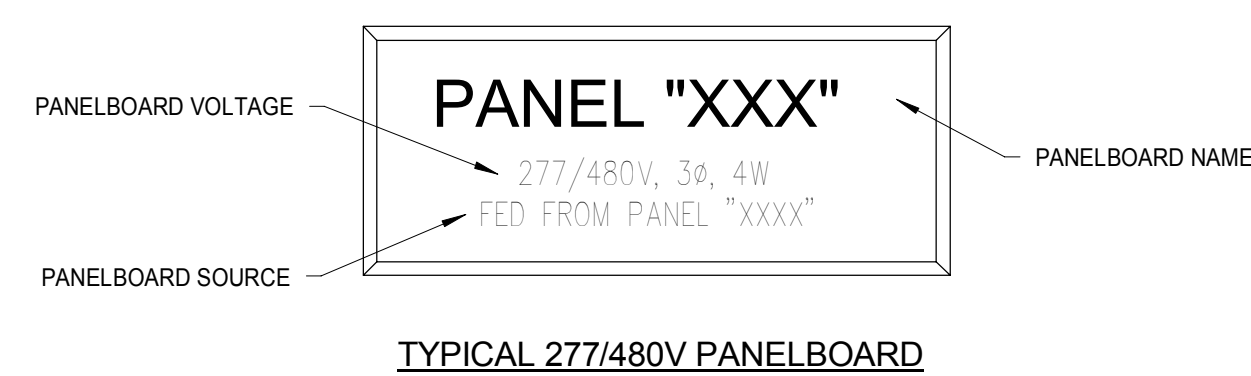
TITLE

ENLARGED
ELECTRICAL
PLANS

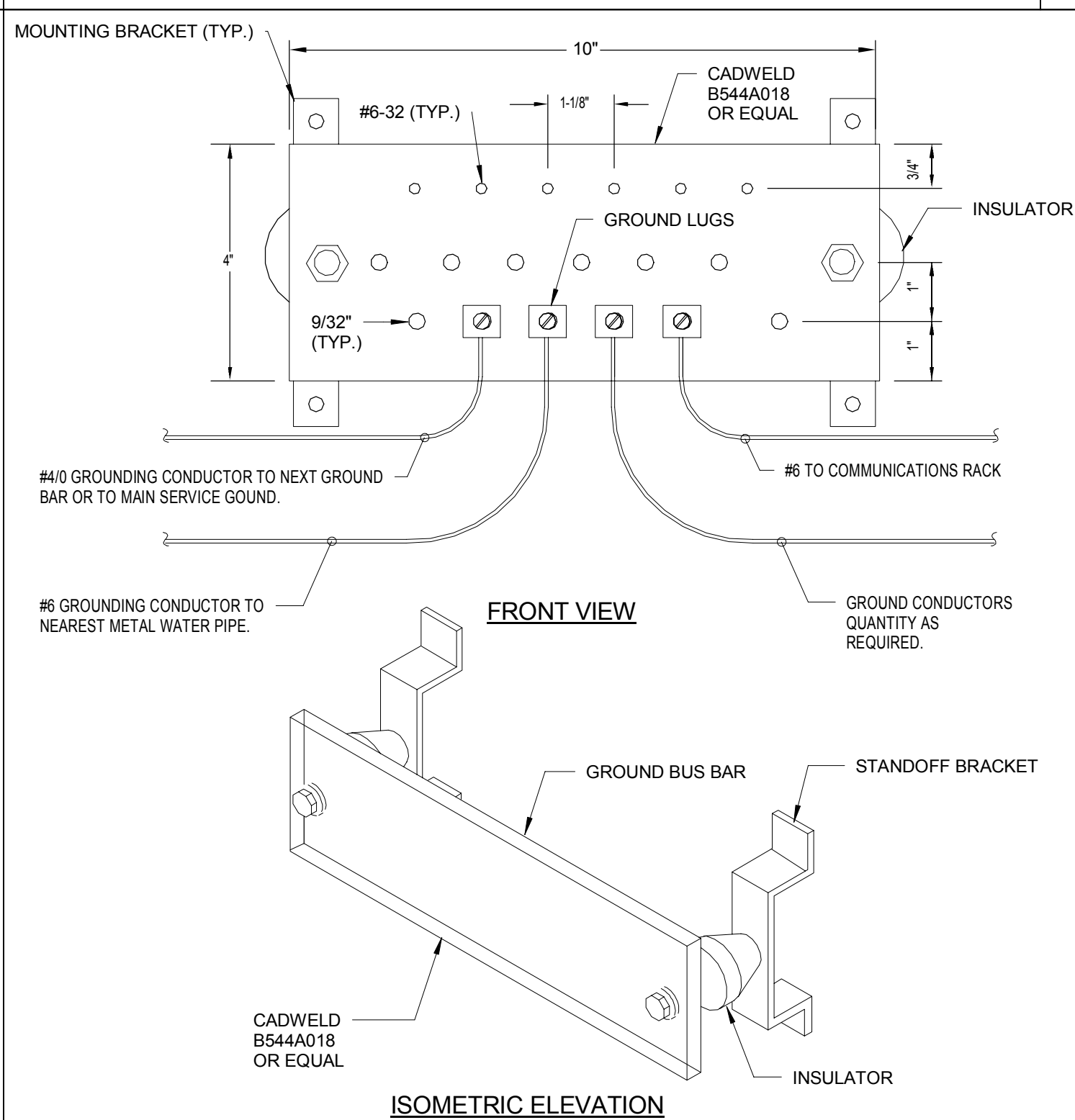
PROJECT NO.	5005710
-------------	---------

E-141

SHEET NO.



PANELBOARD NAMEPLATE DETAIL



GROUND BAR DETAIL

8

[illegible]

REVISIONS

DRAWN BY	JMB
APPROVED BY	GAC
CHECKED BY	GAC
DATE	03/19/2014

TITLE

ELECTRICAL DETAILS

PROJECT NO.	50057109
-------------	----------

E-202

SHEET NO.