

NOTE: SOME SYMBOLS SHOWN ON THIS LEGEND MAY NOT PERTAIN TO THIS PROJECT

SEAL

PRELIMINARY DOCUMENTS
NOT FOR CONSTRUCTION

KEY PLAN

SCALE

$$1'' = 100'-0''$$
[illegible]

No.	Description	Date
-----	-------------	------

REVISIONS	
DRAWN BY	HAT
APPROVED BY	LTE
CHECKED BY	LTE
DATE	03/19/2014

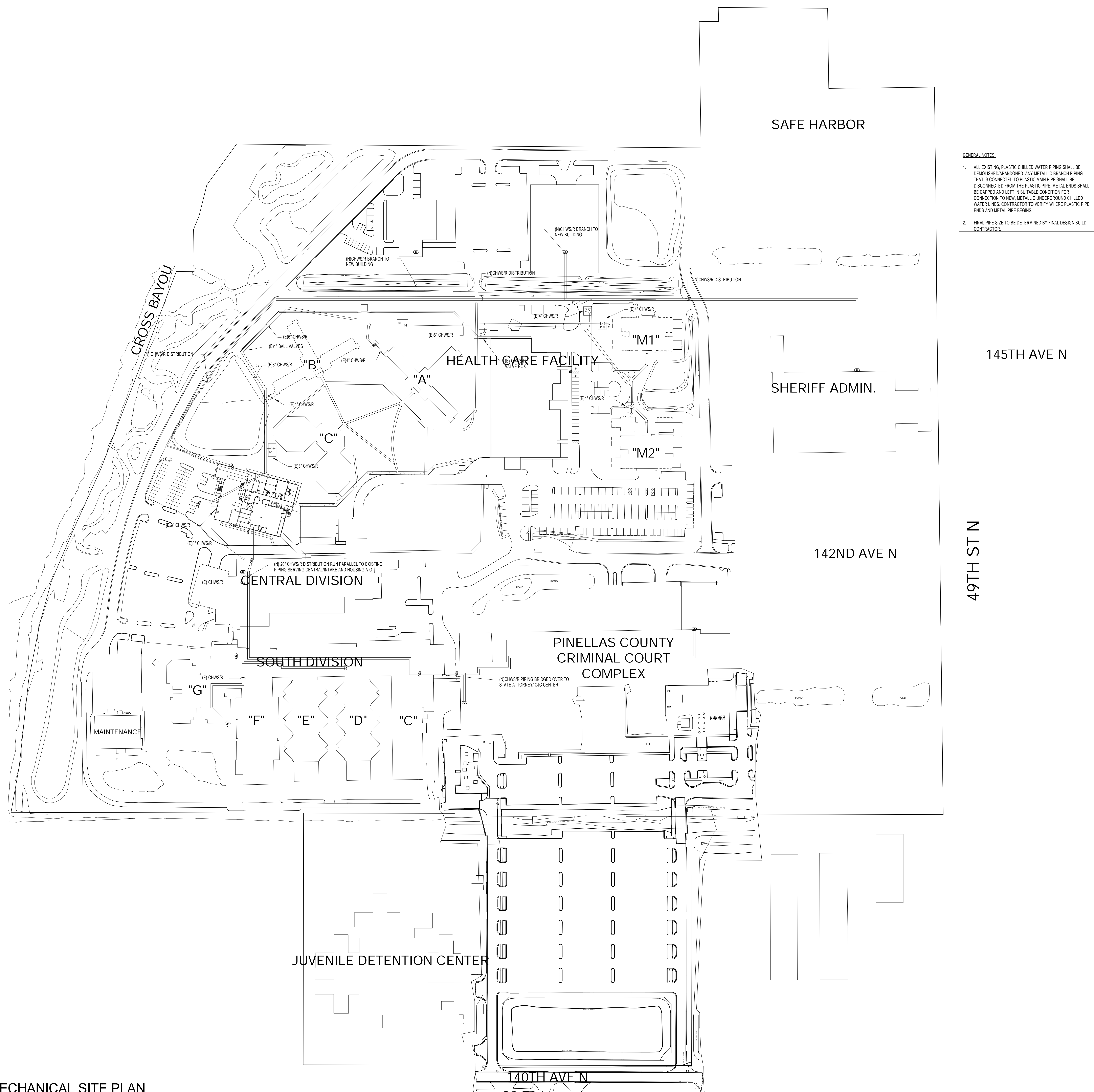
TITLE

MECHANICAL SITE PLAN

PROJECT NO.	50057109
-------------	----------

M-001

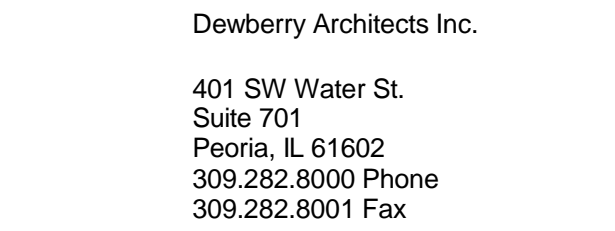
SHEET NO. _____



1 MECHANICAL SITE PLAN



EET NO.



Pinellas County Jail Phase I
Infrastructure Criteria Package - Drawings

PRELIMINARY DOCUMENTS
NOT FOR CONSTRUCTION

8" = 1'-0"

[illegible]

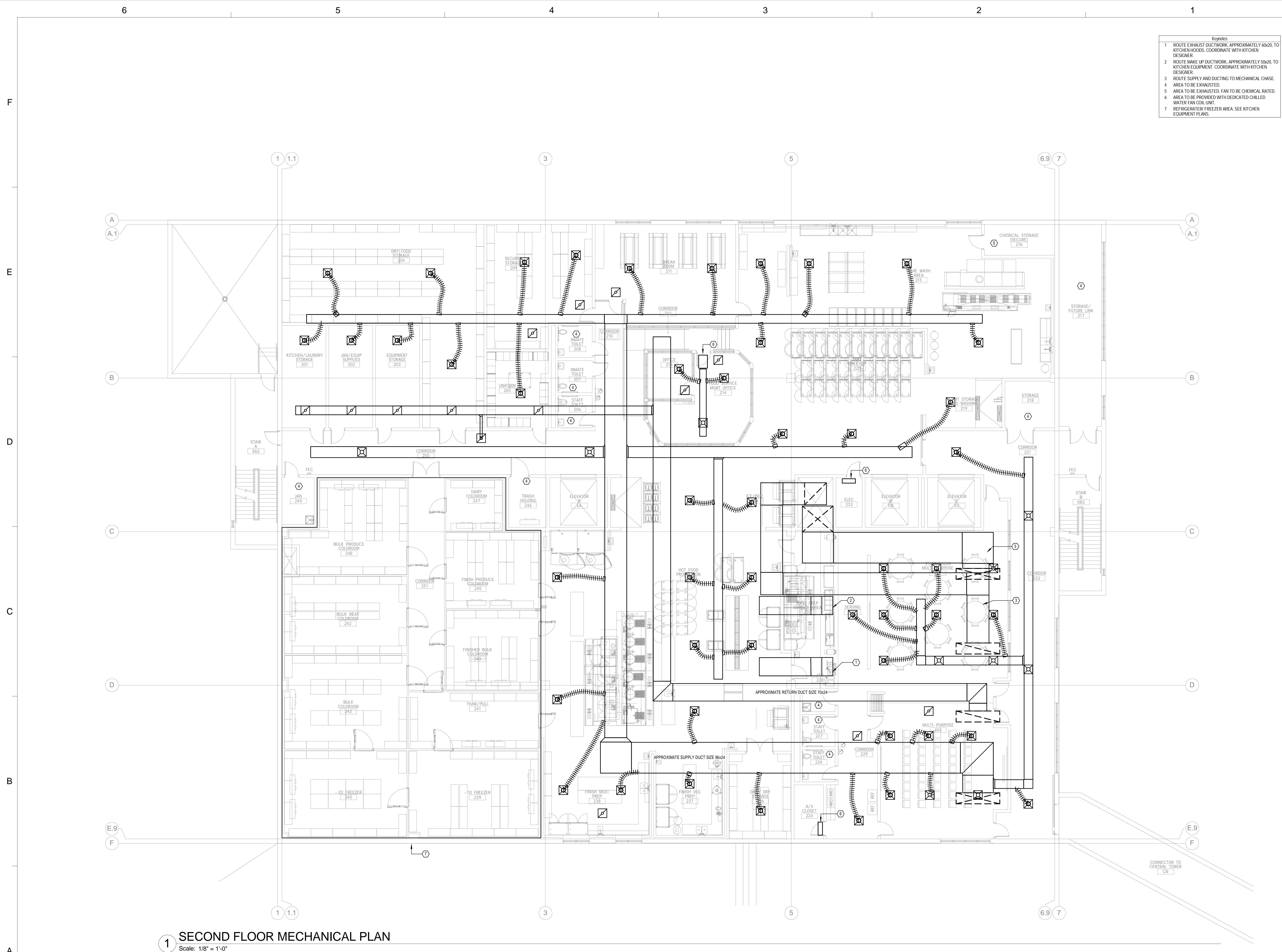
No.	Description	Date
REVISIONS		
	DRAWN BY	HAT
	APPROVED BY	LTE
	CHECKED BY	LTE
	DATE	03/19/2014

SECOND FLOOR MECHANICAL PLAN

PROJECT NO. 50057109

M-120

SHEET NO.





-  **Dewberry®**
-
- Dewberry Architects Inc.
- 401 SW Water St.
Suite 701
Peoria, IL 61602
309.282.8000 Phone
309.282.8001 Fax
-
- ARC**³
architecture
-
- 
ENGINEERING
FOR ARCHITECTURE

SEAL

PRELIMINARY DOCUMENTS
NOT FOR CONSTRUCTION

SCALE

$1/8" = 1'-0"$

REVISIONS	
DRAWN BY	HAT
APPROVED BY	LTE
CHECKED BY	LTE
DATE	03/19/2014
TITLE	

PROJECT NO.	50057109
-------------	----------

SHEET NO. _____

No.	Description	Date
-----	-------------	------

REVISIONS

DRAWN BY	HAT
APPROVED BY	LTE
CHECKED BY	LTE
DATE	03/19/2014

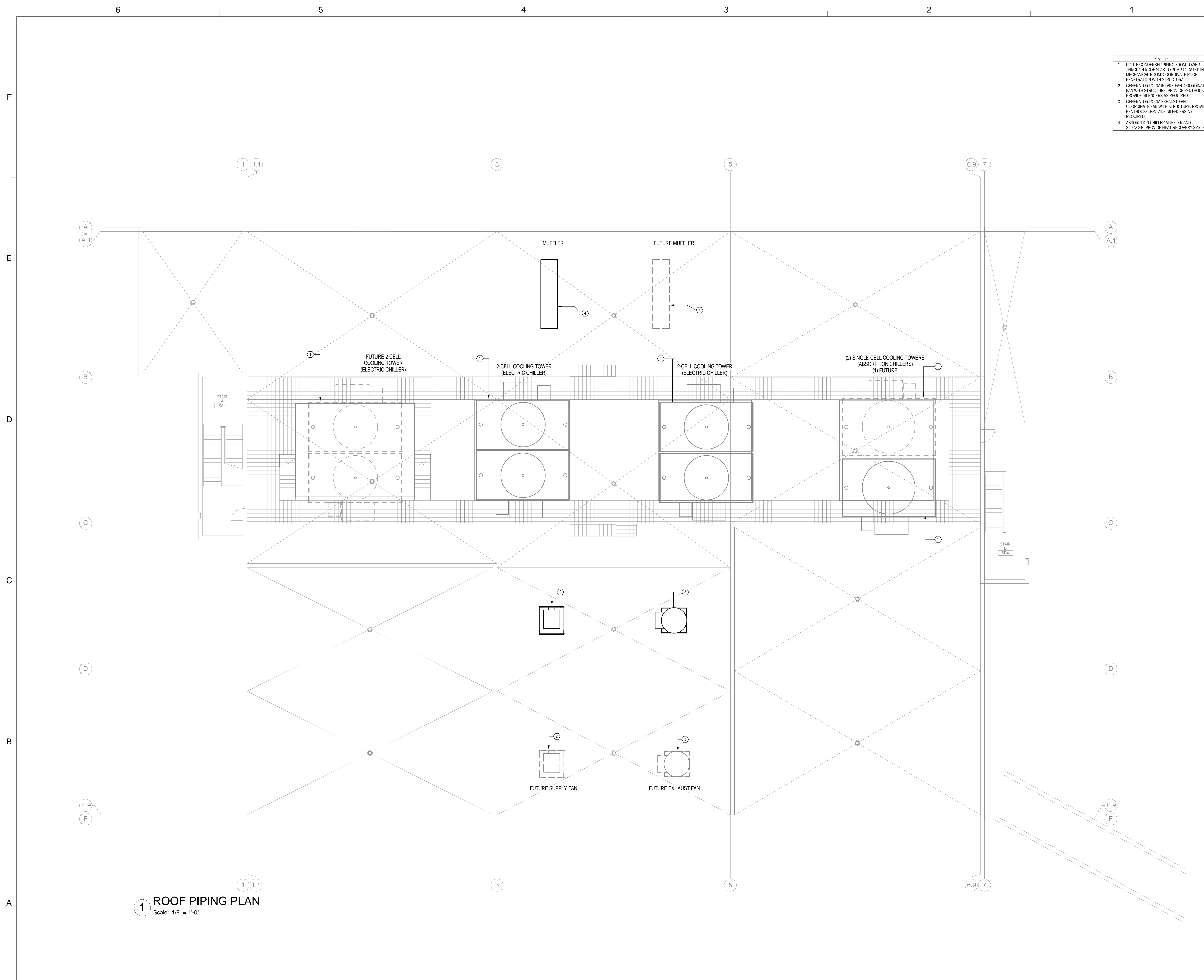
TITLE

ROOF MECHANICAL PLAN

PROJECT NO.	50057109
-------------	----------

M-140

SHEET NO.



REVISIONS

DRAWN BY	HAT
APPROVED BY	LTE
CHECKED BY	LTE
DATE	03/19/2014

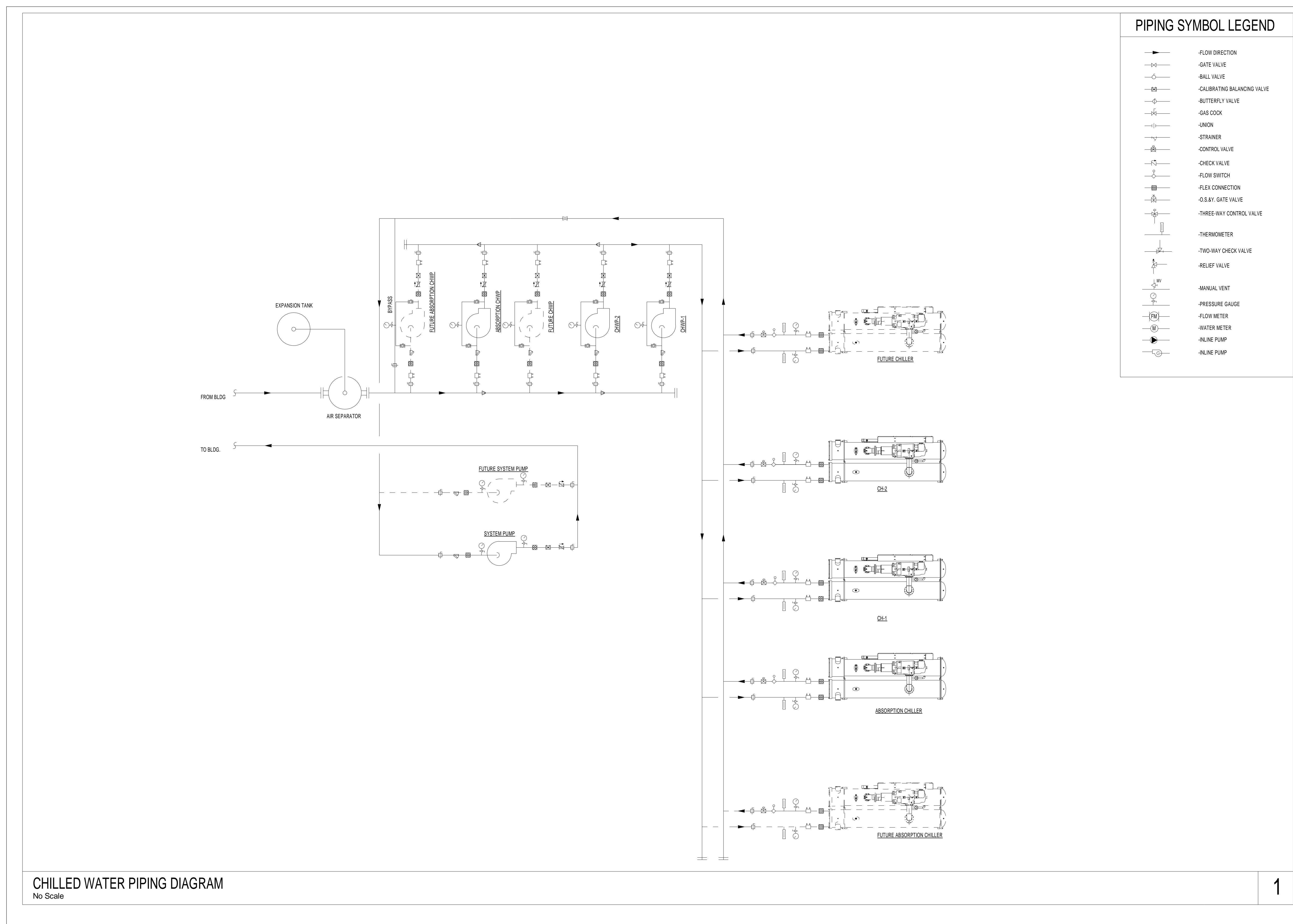
TITLE

MECHANICAL DIAGRAMS

PROJECT NO.	50057109
-------------	----------

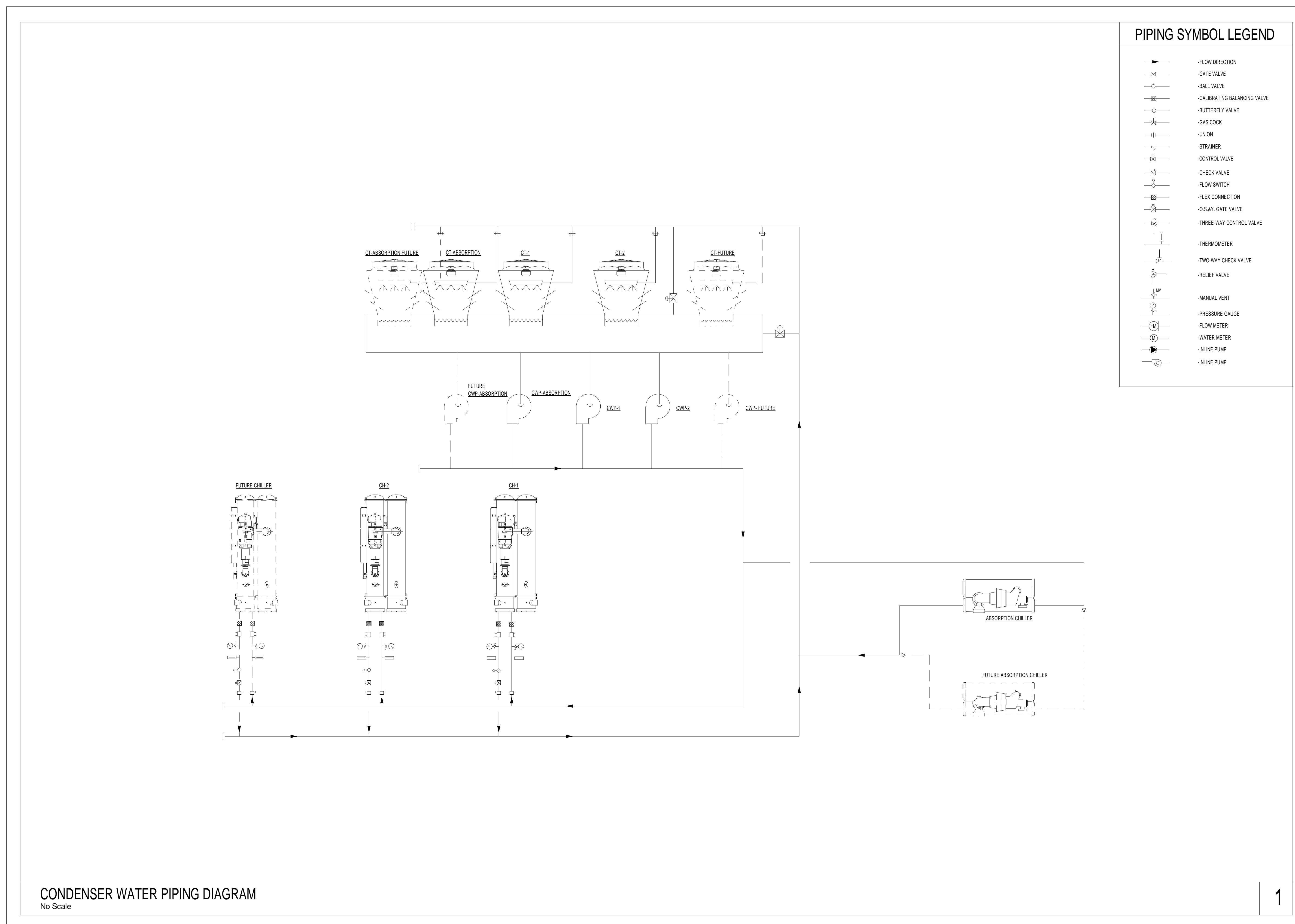
M-200

SHEET NO.



[illegible]

REVISIONS	
DRAWN BY	HAT
APPROVED BY	LTE
CHECKED BY	LTE
DATE	03/19/2014



No.	Description	Date
-----	-------------	------



1



2

[illegible]

REVISIONS

DRAWN BY	HAT
APPROVED BY	LTE
CHECKED BY	LTE
DATE	03/19/2014

TITLE

MECHANICAL DETAILS

PROJECT NO.	50057109
-------------	----------

M-300

SHEET NO.

