



November 2018 Update

Pinellas Trail Overpass Improvements

Project ID# 001005A

Project Location

Pinellas Trail Overpass Improvements at U.S. 19 and Orange Street, Palm Harbor

Project Contact

John Linton, P.E.
Senior Engineer
Transportation

Public Works
22211 U.S. Highway 19 N.,
Bldg. 1
Clearwater, FL 33765
(727) 464-4348
jlinton@pinellascounty.org
[g](#)

More Information

Visit:
www.pinellascounty.org/publicworks/maps-projects.htm

Project Overview

To provide a safe passage for pedestrians and bicyclists, Pinellas County Public Works is constructing a new pedestrian bridge along the Pinellas Trail over Alternate U.S. 19 and Orange Street in Palm Harbor. During construction, the trail segment will be inaccessible. Trail users are advised to follow one of two detours located on page 2 that will allow for continued trail use between Curlew and Tampa roads.

The portion of the bridges to be replaced are the steel trusses which have experienced excessive rusting. New steel trusses with improved coatings are being fabricated off-site. Removal and demolition of the old trusses will take place in early December. The new bridge trusses will be lifted into place following removal of the old trusses. Concrete decks will be poured in January and all work is scheduled for completion in mid-February.

Removal of the old trusses and the setting of new ones will occur at night. Road closures will be necessary during this time. Variable message signs will be placed two weeks in advance of the road closures to advise motorists of the exact dates and times of the closures. Detour signs will provide motorists with alternative routes.

Project Schedule – Next Steps

- Design Start: January 2016
- Design End: February 2017
- Construction Start: January 2018
- Construction End: February 2019

This project is funded through the Penny for Pinellas.

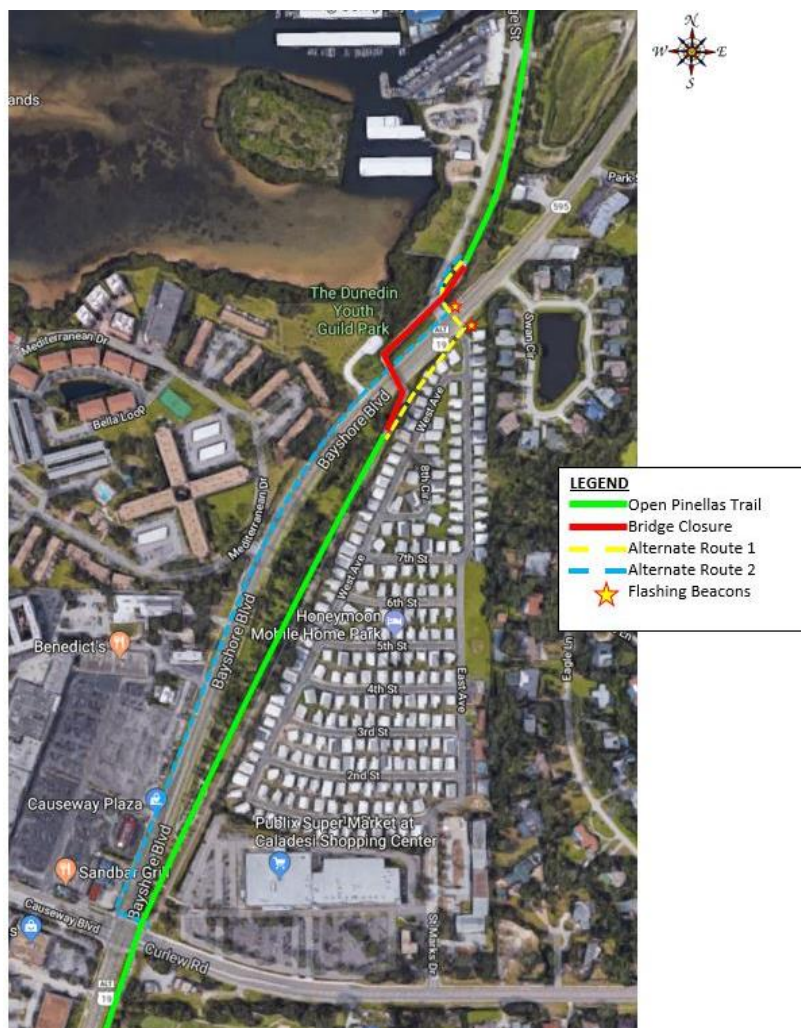
Additional Project Information – Alternate Detour Routes

Alternate 1 Detour

- **Coming from the south:** When approaching the southern end of the closed bridge, Trail users should use the sidewalk to the east of the bridge that connects to the sidewalk on the east side of Alt. 19. There is a new mid-block crosswalk across Alt. 19 at Orange Street with pedestrian activated flashing beacons on both sides of the crosswalk to alert motorists of the crosswalk user. Reconnect with the trail using the new sidewalk connection at Alt. 19 and Orange Street.
- **Coming from the north:** Trail users should use the new sidewalk connection at Orange Street to connect to the new mid-block crosswalk across Alt. 19. There are pedestrian activated flashing beacons on both sides of the crosswalk to alert motorists of the crosswalk user. Continue south on the sidewalk on the east side of Alt. 19 to reconnect to the trail on the southern end of the closed bridge.

Alternate 2 Detour

- **Coming from the south:** Trail users should cross Curlew Road, then Alt. 19 and use a sidewalk along the west side of Alternate 19 to reconnect with the trail using the sidewalk connection at Alt. 19 and Orange Street.
- **Coming from the north:** Trail users should use the sidewalk connection at Orange Street to connect to the sidewalk along the west side of Alt. 19. Continue south to reconnect to the trail at Curlew Road intersection.



Pinellas Trail Overpass Improvements Detour Map