



January 2019 Update

Bee Branch Phase I



Project ID# 002121A

Project Location

Bee Branch Creek from
Omaha St. to 14th St. in
Palm Harbor

Project Contact

Frederick W. Roose
Project Manager
Stormwater Engineering

Public Works
14 S. Ft. Harrison Ave.,
4th floor
Clearwater, FL 33756
(727) 464-4407
froose@pinellascounty.org

More Information

Visit:
www.pinellascounty.org/publicworks/maps-projects.htm

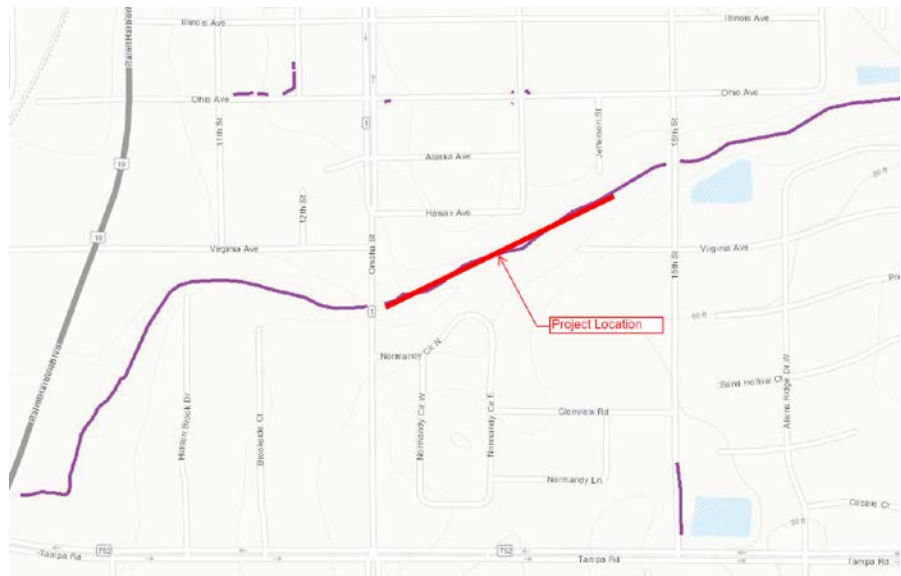
Project Overview

The objective of this project is to minimize erosion and encroachment of Bee Branch Creek onto private properties between Omaha Street (CR 1) and 14th Street in Palm Harbor. The project will also reduce sediment transport to Smith Bayou. A Preliminary Engineering Report was completed in 2016 to assess existing conditions and recommend remedial action. Erosion reduction and bank stabilization will be accomplished by lining the sides of the channel with gabion baskets and providing a gabion mattress along the channel bottom to prevent further cutting into the channel bottom. Similar erosion control measures have been completed on the creek upstream of 15th Street.

Project Schedule – Next Steps

- Construction Start: January 2019
- Construction End: November 2019

Construction began January 2, 2019, currently in the clearing and grubbing phase. Expect installation of gabion boxes and gabion mattresses to start January 21, 2019.





Project ID# 002121A

Project Location

Bee Branch Creek from
Omaha St. to 14th Street
in Palm Harbor

Project Contact

Frederick W. Roose
Project Manager
Stormwater Engineering

Public Works
14 S. Ft. Harrison Ave.,
4th floor
Clearwater, FL 33756
(727) 464-4407
froose@pinellascounty.org

More Information

Visit:
[www.pinellascounty.org/
publicworks/maps-
projects.htm](http://www.pinellascounty.org/publicworks/maps-projects.htm)

Project Overview

The objective of this project is to minimize erosion and encroachment of Bee Branch Creek onto private properties between Omaha Street (CR 1) and 14th Street in Palm Harbor. The project will also reduce sediment transport to Smith Bayou. A Preliminary Engineering Report was completed in 2016 to assess existing conditions and recommends remedial action. Erosion reduction and bank stabilization will be accomplished by lining the sides of the channel with gabion baskets and providing a gabion mattress along the channel bottom to prevent further cutting into the channel bottom. Similar erosion control measures have been completed on the creek upstream of 15th Street.

Project Schedule – Next Steps

- Construction Start: January 2019
- Construction End: November 2019

Final design, permitting, and construction plans have been completed. The construction bid package is expected to be advertised in August 2018. Bid responses are expected in September with staff recommendations to the Board of County Commissioners in October.

