



# Attention

## Pinellas County Resident

Please be advised that a Pinellas County Urban Forestry Crew will be pruning trees in your neighborhood. There are Certified Arborists on each crew to ensure that the trees are properly pruned to at least 16 feet over roadways, 10 feet over sidewalks, and clear the street lights.

### **Work is scheduled to begin within:**

☐ 48 hours

☐ 2 weeks

Trees are being pruned for pedestrians and high profile vehicles (i.e. emergency vehicles, school buses). Thank you for your cooperation.

*Remarks/Comments/Other:*

---

---

---

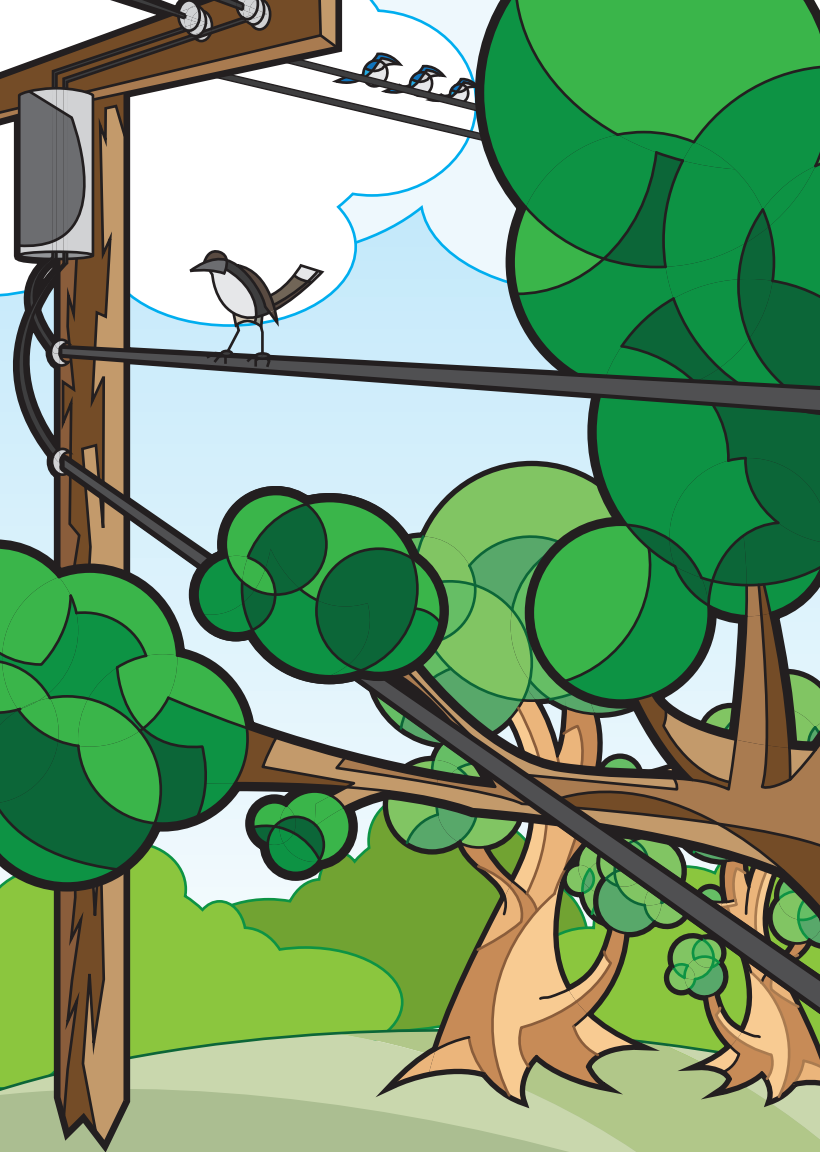
---

---

---

---

---



# About Your Pinellas County Urban Forestry Program:

The trees in your neighborhood are a valuable asset to the community and help make up our *Urban Forest*. Our goal is to sustain our Urban Forest by following International Society of Arboriculture (ISA) pruning standards. We do not work around power lines. If you have a problem with a tree or branch on a power line you can call Duke Energy at (800) 700-8744. It is our pleasure to serve the residents of Pinellas County. If you have any comments or questions please contact the Urban Forestry Department through the county website or call at (727) 464-8900.



Pinellas County complies with the Americans with Disabilities Act. To obtain accessible formats of this document, please call (727) 464-4880 / TDD (727) 464-4062.

Funding for this door hanger was provided by the Department of Environment and Infrastructure. 1,000 copies were printed at a cost of \$135 or \$0.135 each.

(turn over) ►