

PRESCRIBED BURNING PLAN (Prescription)



| | | | |
|---|---------------------------------|---|--------------------------------------|
| Location: Brooker Creek Preserve unit : Red Trail | | Authorization No: _____ / Landowner # XXXXXX | |
| Landowner: Pinellas County | | Address: 3620 Fletch Haven Dr., Tarpon Springs | |
| Telephone: 727-453-6900 | S: 36 | T: 27 | R: 16 County: Pinellas |
| Acres to Burn: 66 | Length firebreak: 2400yd | | Previous Burn Date: 01/99 |
| Stand Prescription: Pine Flatwoods, Mixed Upland Forest | | | |
| Overstory Type: Pine/Oak | | Height to Bottom of Crown: 30ft | |
| Understory Type: Palmetto/Galberry 2- >6 ft Grass 1-3 ft | | | |
| Fuel Description: Heavy Rough | | Topography and Soil: Flat - Myakka, Pompano, Astor | |
| Purpose of Burn: Fuel reduction | | | |
| Burn Objectives: Fuel reduction. After this burn, the area will be assessed for possible mechanical work to reduce palmetto height and density. Future burns should be ecological. | | | |
| | | | |
| | | | |
| | | | |
| Firing Techniques and Ignition Methods: Backing and strip fires | | | |
| * see attached ignition plan | | | |
| | | | |
| | | | |
| | | | |
| Personnel Needs: Pinellas - minimum 11 14 if 3 per truck | | Equipment Needs: 3 - Strike Trucks, | |
| Maximum Crown Scorch Acceptable: 70% | | Passed Smoke Screening System: Yes | |
| Listed Possible Smoke-Sensitive Areas: East Lake Road, Keystone Rd | | | |
| Special Precautions: Monitor smoke sensitive areas | | | |
| Adjacent Landowners to Notify: | | | |

| MONITORING & EVALUATION PROCEDURES | | |
|---|---|---|
| PRE-BURN | BURN | POST BURN |
| <ul style="list-style-type: none"> • <i>Notify local agencies</i> • <i>Pre-burn plan</i> • <i>Safety briefing</i> • <i>Check equipment</i> • <i>Pre-burn monitoring</i> | <ul style="list-style-type: none"> • <i>Follow burn plan</i> • <i>Monitor smoke</i> | <ul style="list-style-type: none"> • <i>Mop up</i> • <i>Post burn briefing</i> • <i>Post burn monitoring</i> |
| WEATHER FACTORS | PREFERRED | ACTUAL |
| Surface Winds | <i>N, S, NE, SE</i> | |
| Transport Winds | <i>N, S, NE, SE 5 –15 mph</i> | |
| Minimum Mixing Height | <i>2000</i> | |
| Dispersion Index (DAY) | <i>35-65</i> | |
| Dispersion Index (NIGHT) | <i>Minimum = 3</i> | |
| Maximum Temperature | <i>93°F</i> | |
| Minimum Relative Humidity | <i>35-55%</i> | |
| Fine Fuel Moisture | <i><15%</i> | |
| Rate of Spread | <i>1—3 chains/hour</i> | |
| Starting Time | <i>No later than 1100</i> | |
| Burn Technique | <i>Backing/Strip</i> | |
| Days since Rain: <i>>1, <10</i> | Date Burned: | Distance Plowed: |
| PRE-BURN CHECKLIST | | |
| <p>FIRE BOSS: Initial each item to indicate compliance.</p> <ul style="list-style-type: none"> <input type="checkbox"/> All prescription requisites met (preparation and day of burn). <input type="checkbox"/> Authorization obtained <input type="checkbox"/> Adjacent landowners notified within past 7 days of plan to burn. <input type="checkbox"/> Local contacts made day of burn to advise (FHP, SO, Fire Dept., Media, etc.). <input type="checkbox"/> Smoke screening performed and documented. <input type="checkbox"/> All equipment required on scene and documented <input type="checkbox"/> Each crew member has proper personal gear and clothing. | | |
| CREW-BRIEFING | | |
| <ul style="list-style-type: none"> <input type="checkbox"/> Objectives of burn. <input type="checkbox"/> Exact area of burn. <input type="checkbox"/> Hazards discussed volatile fuels, spotting potential, weak points in perimeter lines, terrain features, etc <input type="checkbox"/> Crew Assignments made. <input type="checkbox"/> Ignition techniques and pattern. Holding method(s) <input type="checkbox"/> Location of extra equipment, fuel, water, vehicle keys <input type="checkbox"/> Authority and communications. <input type="checkbox"/> Contingencies covered including escape routes or procedures. <input type="checkbox"/> Sources of nearest assistance. Nearest phone and emergency numbers. <input type="checkbox"/> Special instructions regarding smoke management, contact with the public and others. <input type="checkbox"/> Questions. <input type="checkbox"/> Crew members given opportunity to decline participation (is there anything that is going to prevent full physical performance?). | | |
| Prescription Done By: | | Date: |
| Certified Burn Manager Signature: | | Certification Number: |

IGNITION PLAN

Brooker Creek Preserve

Unit: Red Trail

Red Trail unit will be burned using backing and strip fires. This unit can be burned during four wind direction and each direction requires a different firing pattern. This burn unit is mainly pine flatwoods with areas of mixed upland forests. It is mainly palmetto/galberry understory with patches of grassy areas throughout. The palmetto height ranges from 3 to greater than 6 feet. Letters are placed on the Burn Map for ease of the crew knowing their location on the fire. See Burn map for these locations as they will be referred to in the descriptions below.

North winds: A small test fire will be set at the midpoint along the south line. Depending on the fire behavior the decision on whether or not to proceed with the burn will be made. If the burn is to continue, ignition will proceed from the test fire area east and west along the south edge of the unit. A backing fire will be lit along the south line. After a blackline has been burned strip fires will be ignited along the east and west sides of the unit at approximately one chain intervals. The distance between and length of the strip fires will be modified depending on fuel load, ease of access and fire behavior.

South winds: A small test fire will be set at the midpoint along the north line. Depending on the fire behavior the decision on whether or not to proceed with the burn will be made. If the burn is to continue, ignition will proceed from the test fire area east and west along the north edge of the unit. A backing fire will be lit along the north line. After a blackline has been burned strip fires will be ignited along the east and west sides of the unit at approximately one chain intervals. The distance between and length of the strip fires will be modified depending on fuel load, ease of access and fire behavior.

Northeast winds: A small test fire will be set at the southeast corner of the unit. Depending on the fire behavior the decision on whether or not to proceed with the burn will be made. If the burn is to continue, ignition will proceed from the test fire area east and north. A backing fire will be lit along the south line for 3-5 chains before strip fires are ignited. The west side will be burned entirely as a backing fire. Strip fires will be ignited on the north edge of the unit. The distance between and length of the strip fires will be modified depending on fuel load, ease of access and fire behavior.

Southeast winds: A small test fire will be set at the northeast corner of the unit. Depending on the fire behavior the decision on whether or not to proceed with the burn will be made. If the burn is to continue, ignition will proceed from the test fire area east and south. Backing fires will be lit for 3-5 chains before strip fires are ignited. The distance between and length of the strip fires will be modified depending on fuel load, ease of access and fire behavior.

[illegible]

PRE-BURN BRIEFING

General Control Objectives for the Burn

- ☐ Maintain burn within unit
- ☐ Watch for spot-overs
 - ☐ Do not rush spot-overs
 - ☐ Inform the burn boss immediately
 - ☐ All ignition is to cease
- ☐ Monitor weather for: wind shift, humidity change, temperature change
- ☐ Monitor smoke
- ☐ Nearest water source (for truck fill-up)
- ☐ Crew Assignments
- ☐ Report weather readings hourly (assign to crew member)
- ☐ Ignition Plan

General Safety Message

- ☐ Follow ignition plan
- ☐ Stay hydrated
- ☐ Maintain radio contact
- ☐ Know escape routes
- ☐ Inform the burn boss immediately of any injuries
- ☐ Rotate A/C breaks as needed

Watch out situations

- ☐ Old Plowlines
- ☐ Snags
- ☐ Holes in Standing Water
- ☐ Venomous Snakes
- ☐ Gopher Tortoise Burrows
- ☐ Yellow Jackets/Wasps
- ☐ Old Barbed Wire Fence
- ☐ Powerlines

Any Crew Members Decline Participation on Burn?

- ☐ No
- ☐ Yes
(Name – Reason)

_____ - _____

_____ - _____

_____ - _____

_____ - _____

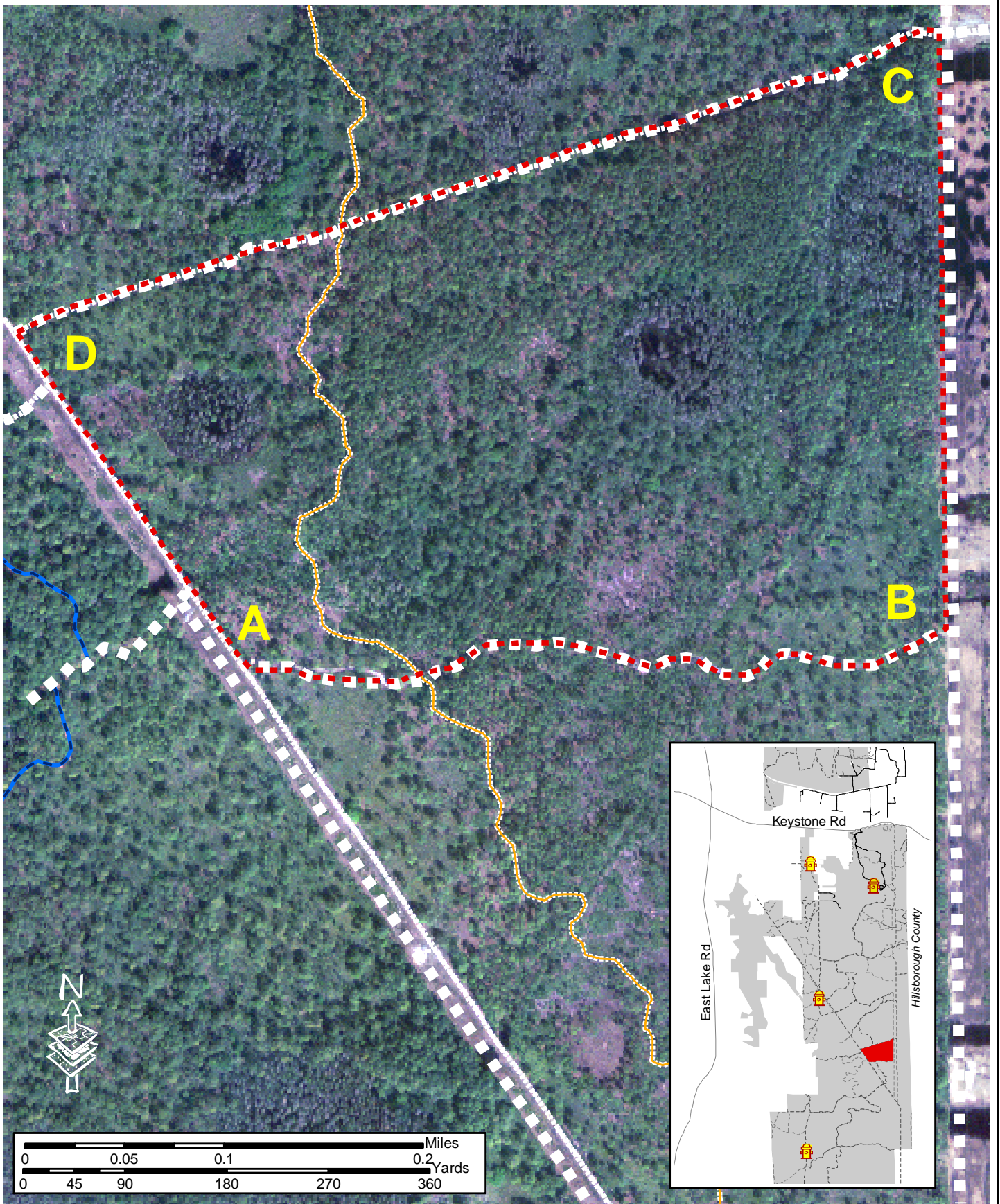
Nearby Medical Facilities

Mease Hospital
Helen Ellis

McMullen Booth Road
Pinellas Avenue South

Safety Harbor
Tarpon Springs

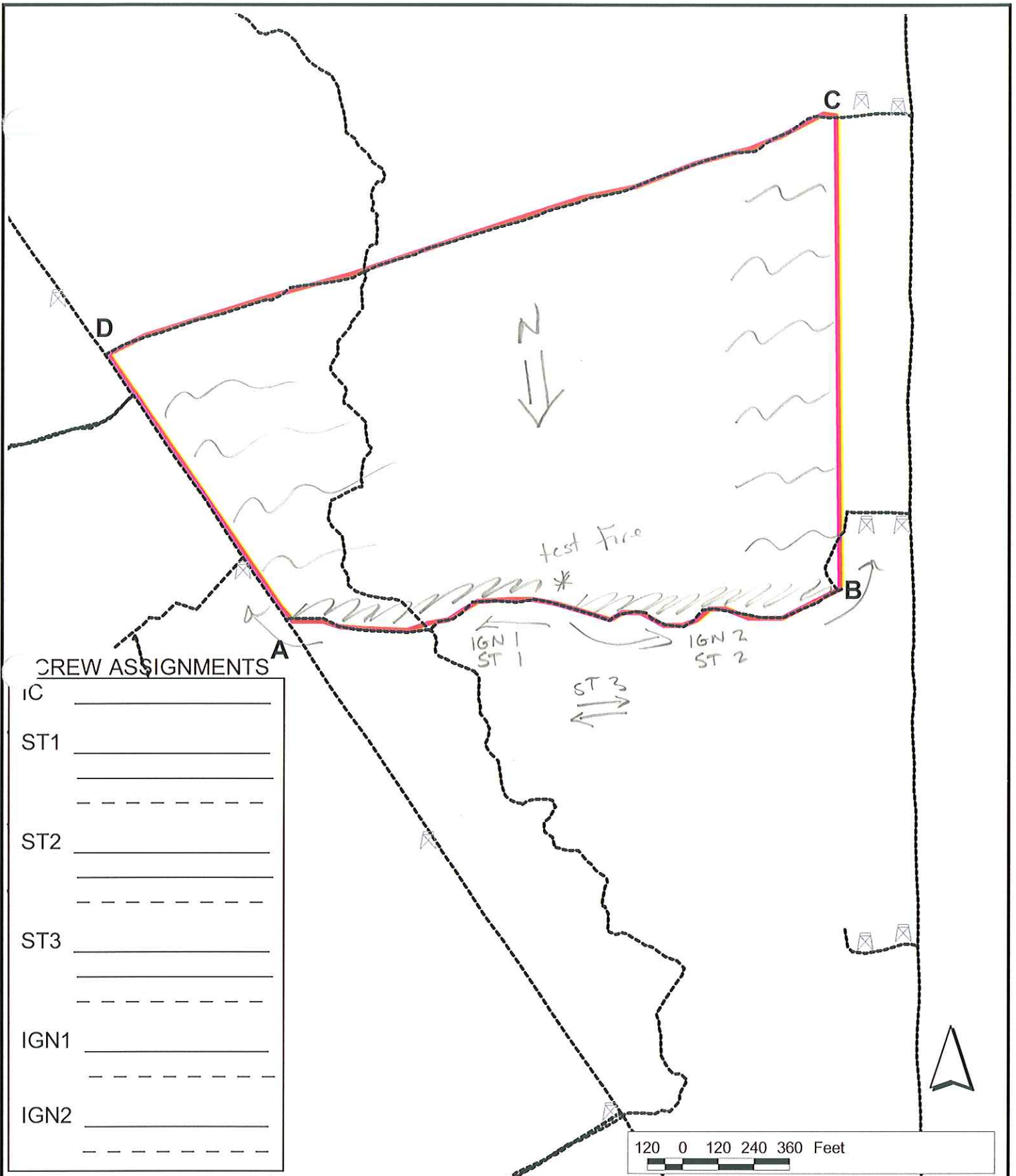
756-6111
942-5000
(5008 ER)



 Unit - Red Trail
Acres - 66

BROOKER CREEK PRESERVE **Prescribed Burn Map**





CREW ASSIGNMENTS

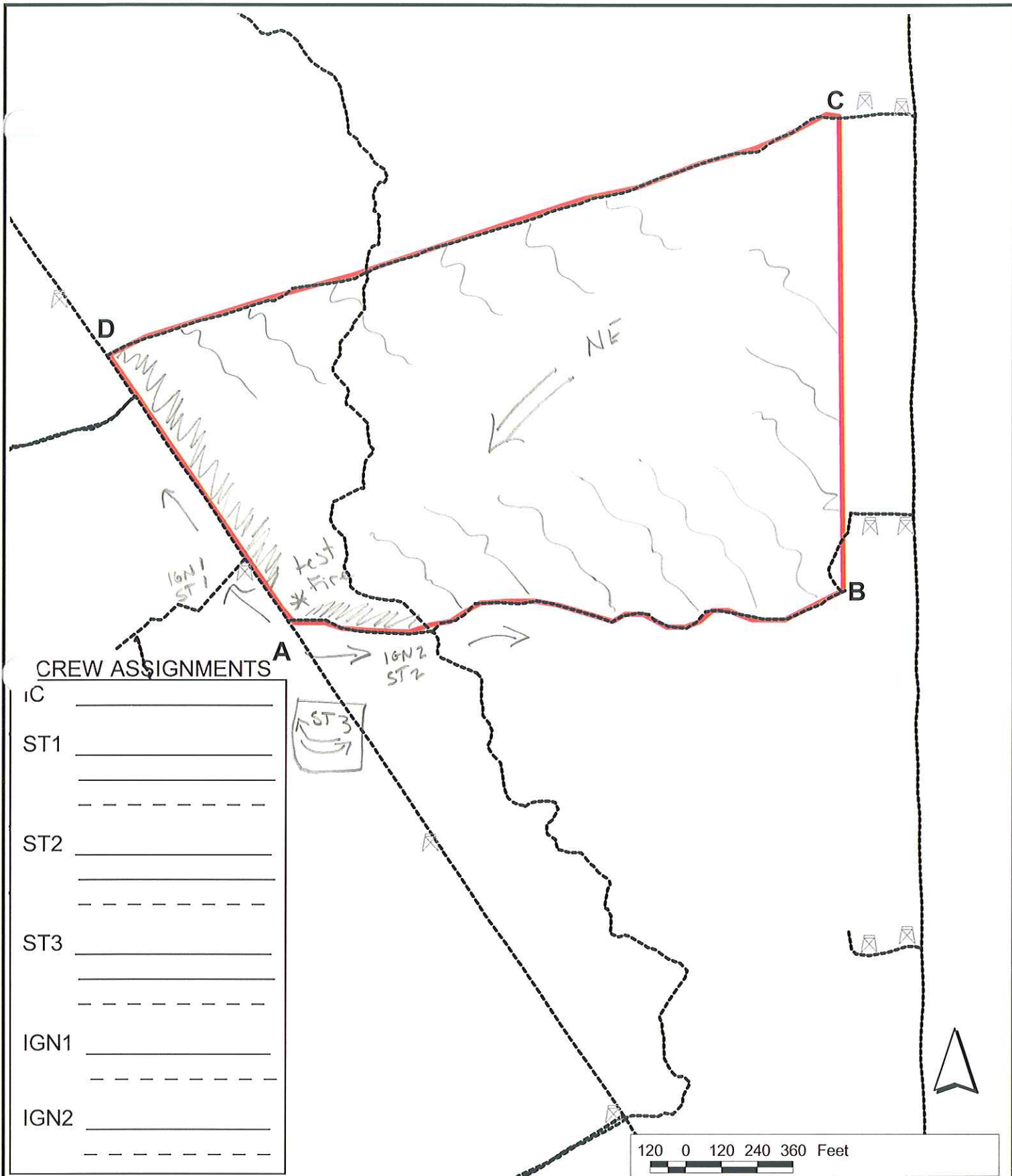
| | |
|------|-------|
| IC | _____ |
| ST1 | _____ |
| | _____ |
| ST2 | _____ |
| | _____ |
| ST3 | _____ |
| | _____ |
| IGN1 | _____ |
| | _____ |
| IGN2 | _____ |
| | _____ |



Unit - North Red Trail
Acres - 66

**Brooker Creek Preserve
Prescribed Burn Map**





CREW ASSIGNMENTS

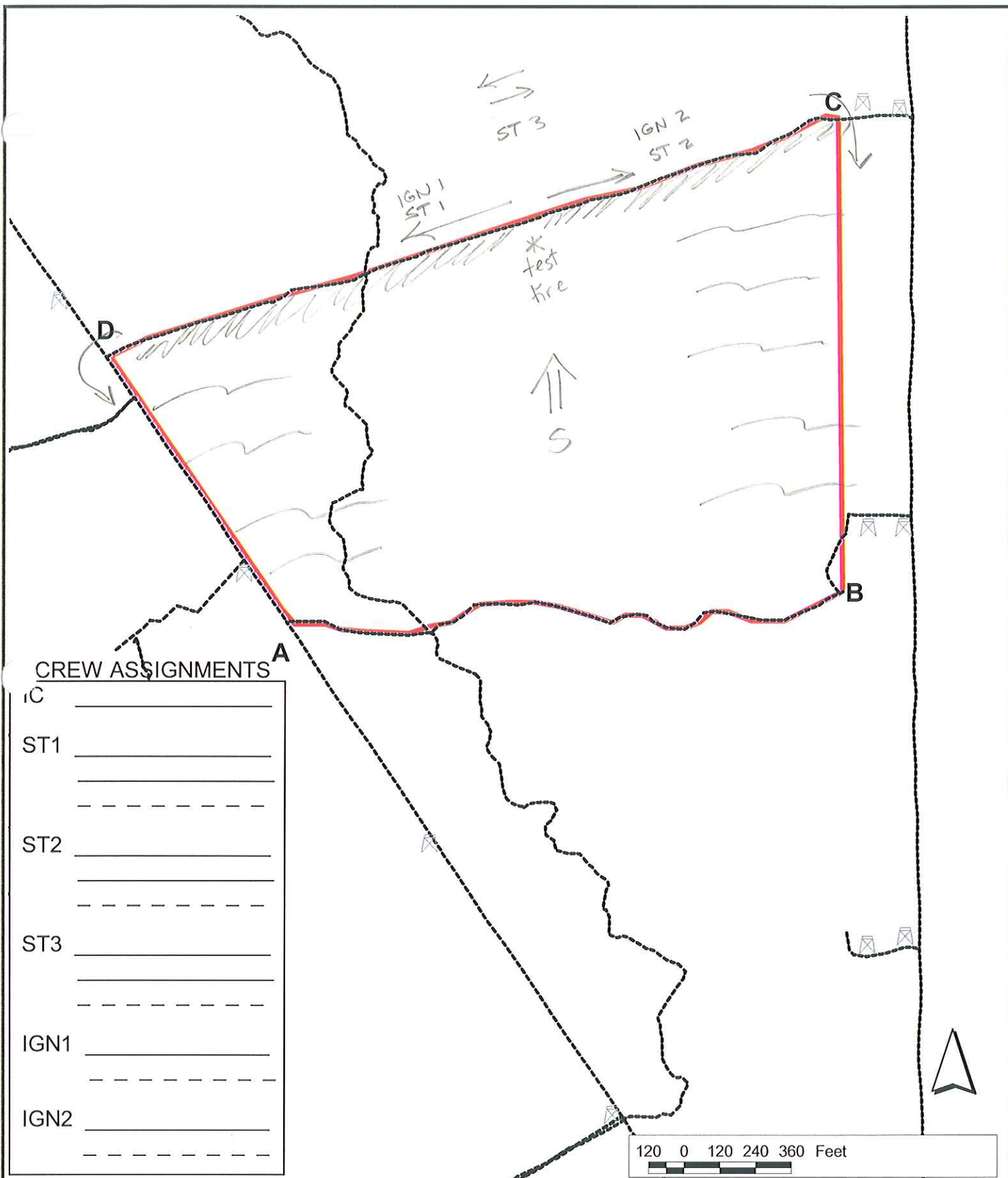
| | |
|------|-------|
| IC | _____ |
| ST1 | _____ |
| | _____ |
| ST2 | _____ |
| | _____ |
| ST3 | _____ |
| | _____ |
| IGN1 | _____ |
| | _____ |
| IGN2 | _____ |
| | _____ |



Unit - North Red Trail
Acres - 66

Brooker Creek Preserve
Prescribed Burn Map

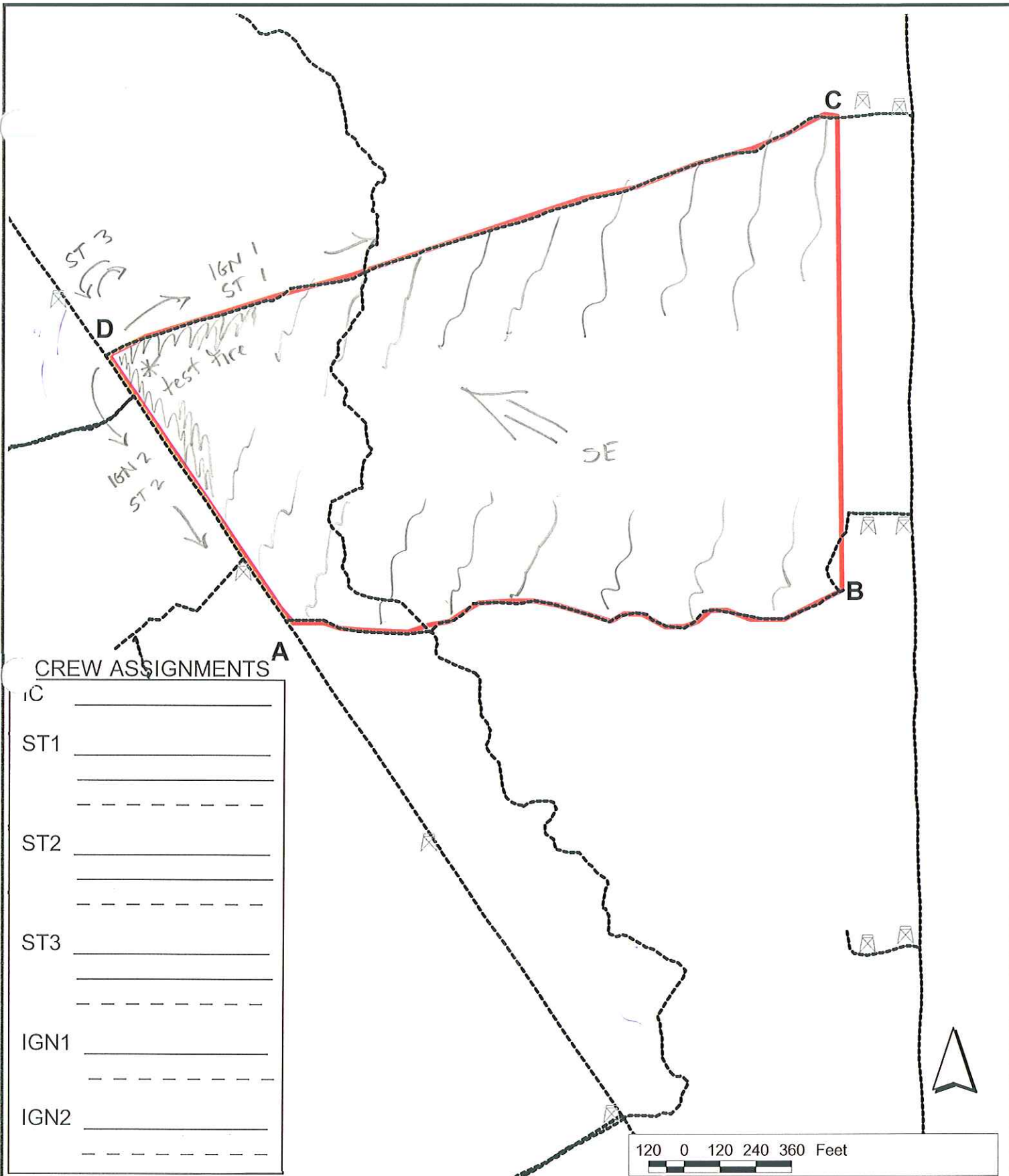




Unit - North Red Trail
Acres - 66

Brooker Creek Preserve
Prescribed Burn Map

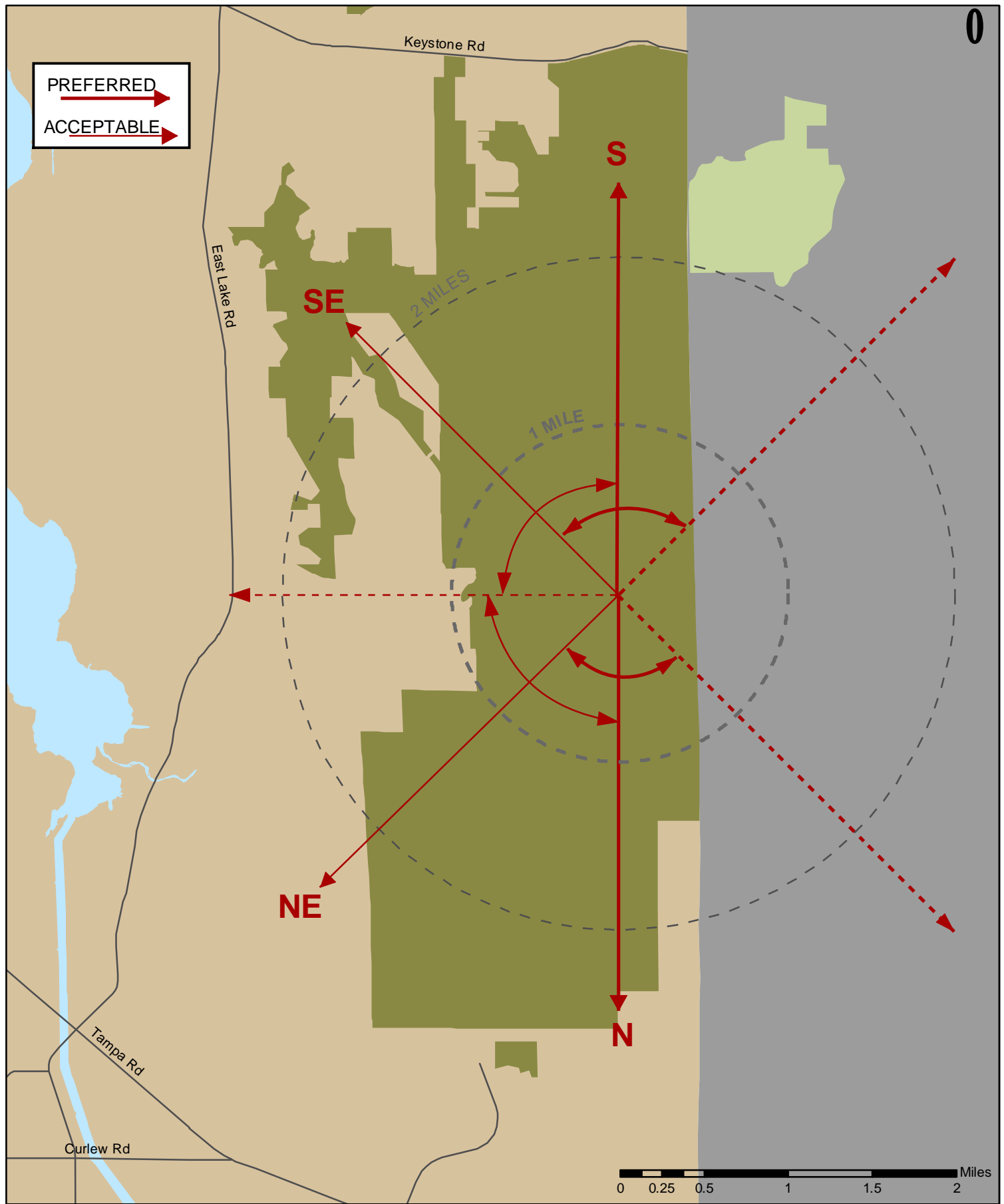




Unit - North Red Trail
Acres - 66

Brooker Creek Preserve
Prescribed Burn Map





Unit - Red Trail
Acres - 66

BROOKER CREEK PRESERVE Smoke Map

04-2005