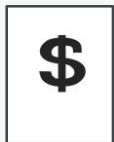




**FORWARD
PINELLAS**
Integrating Land Use & Transportation

| Enhancing Beach Access Listening Session

May 3, 2016



OUTLINE

- **Study Area**
- **Key Issues**
- **Potential Activities**



STUDY AREA

The “Why”:

Traffic congestion is a threat to the enjoyment of our beaches by visitors and residents

The “How”:

Identify opportunities to improve access to and transportation options along the Gulf Beaches

Develop strategies to promote mixed-use redevelopment, job creation and preservation of neighborhoods



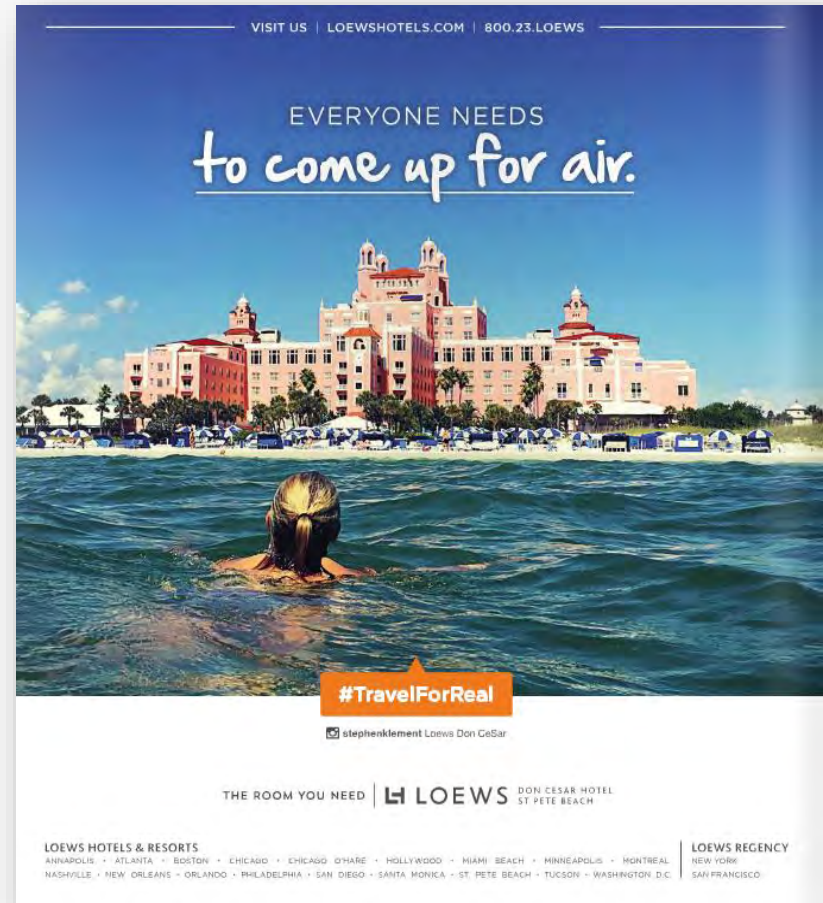
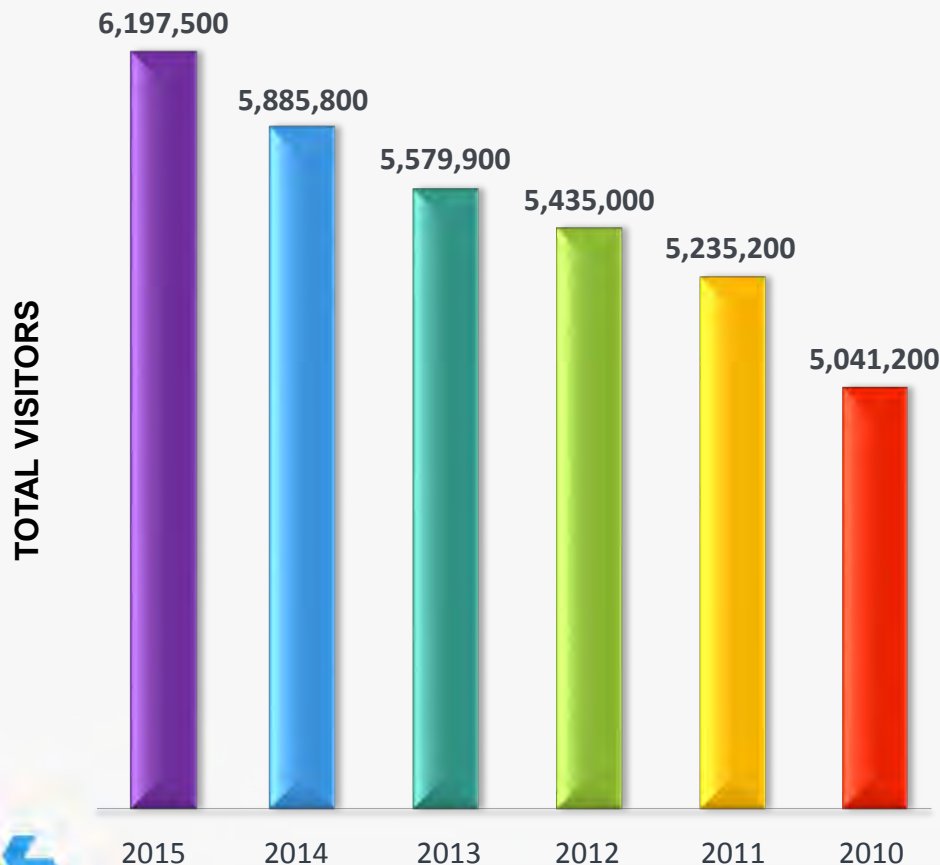
KEY ISSUES



ECONOMIC DEVELOPMENT



\$9.2 BILLION IN TOTAL ECONOMIC IMPACT IN 2015



Source: Visit St. Pete/Clearwater-RESEARCH DATA SERVICES, INC.

ECONOMIC DEVELOPMENT



- **Pinellas County is built-out and our future economic well-being, accessibility and quality of life will increasingly depend on our ability to redevelop**
- **Market-driven redevelopment is already occurring**
- **Redevelopment presents new opportunities for communities to achieve their desired vision, through a coordinated effort that enhances quality of life and economic opportunity**



Targeted Market Studies

- **Quantifies Redevelopment Potential**
- **Comprises Sequential Steps:**
 - **Demographic & Economic Profile**
 - **Real Estate Market Conditions**
 - **Demand/Redevelopment Potentials**
 - **Guides Policy & Planning Decisions**

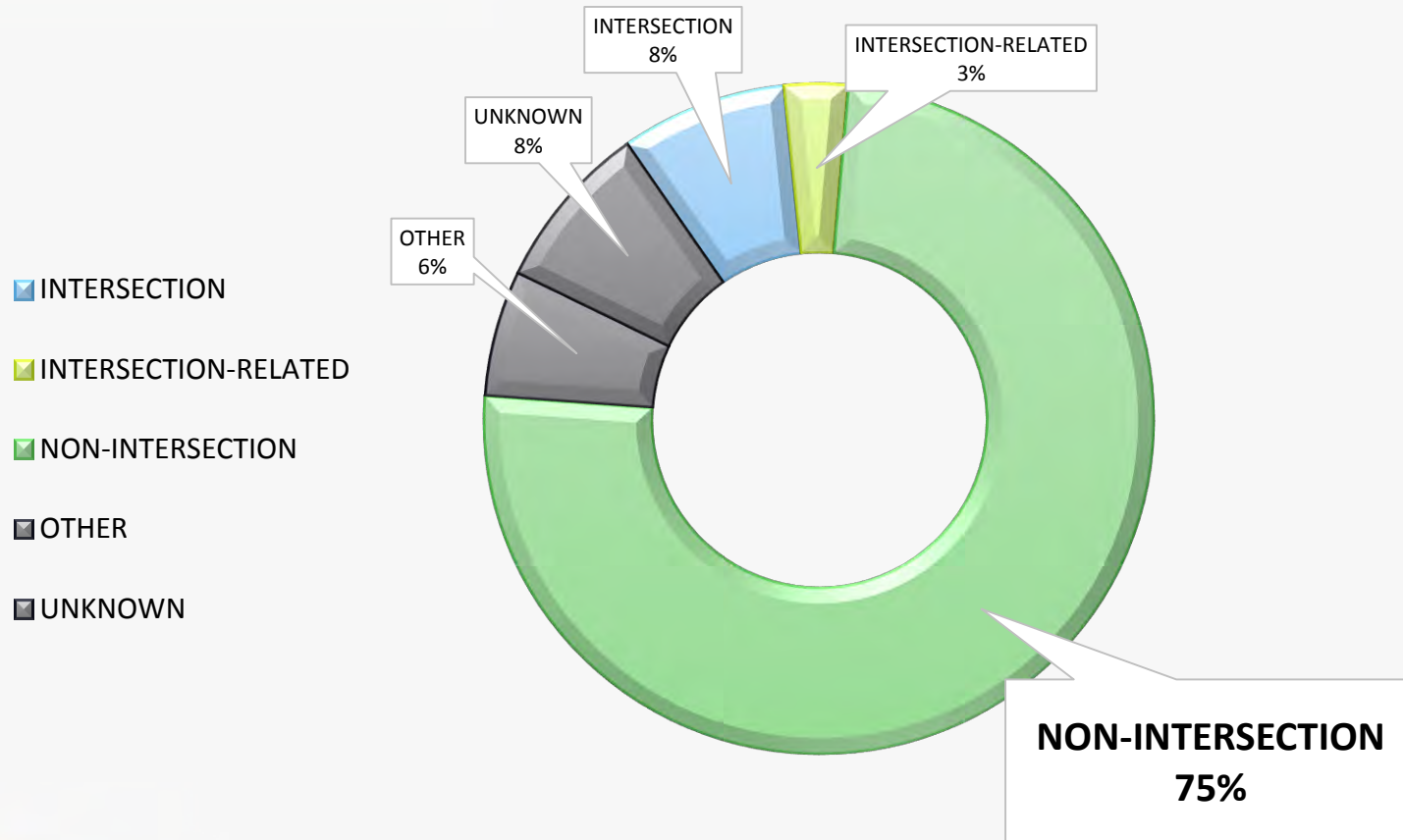


SAFETY



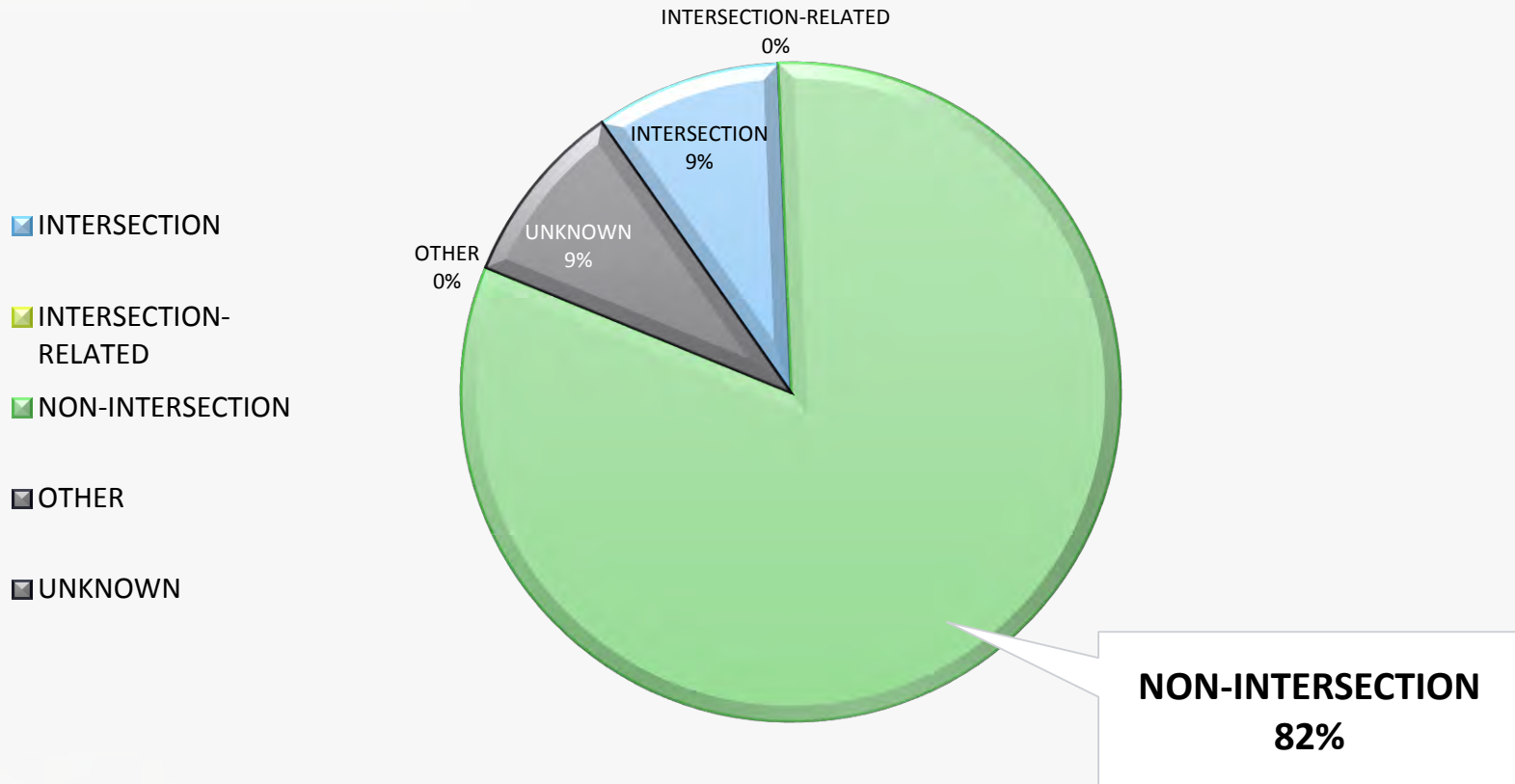


Pedestrian Crashes along Gulf Boulevard, 2011-2015





Pedestrian Fatality Locations along Gulf Boulevard, 2011-2015



MOBILITY AND MULTI-MODAL ACCESS



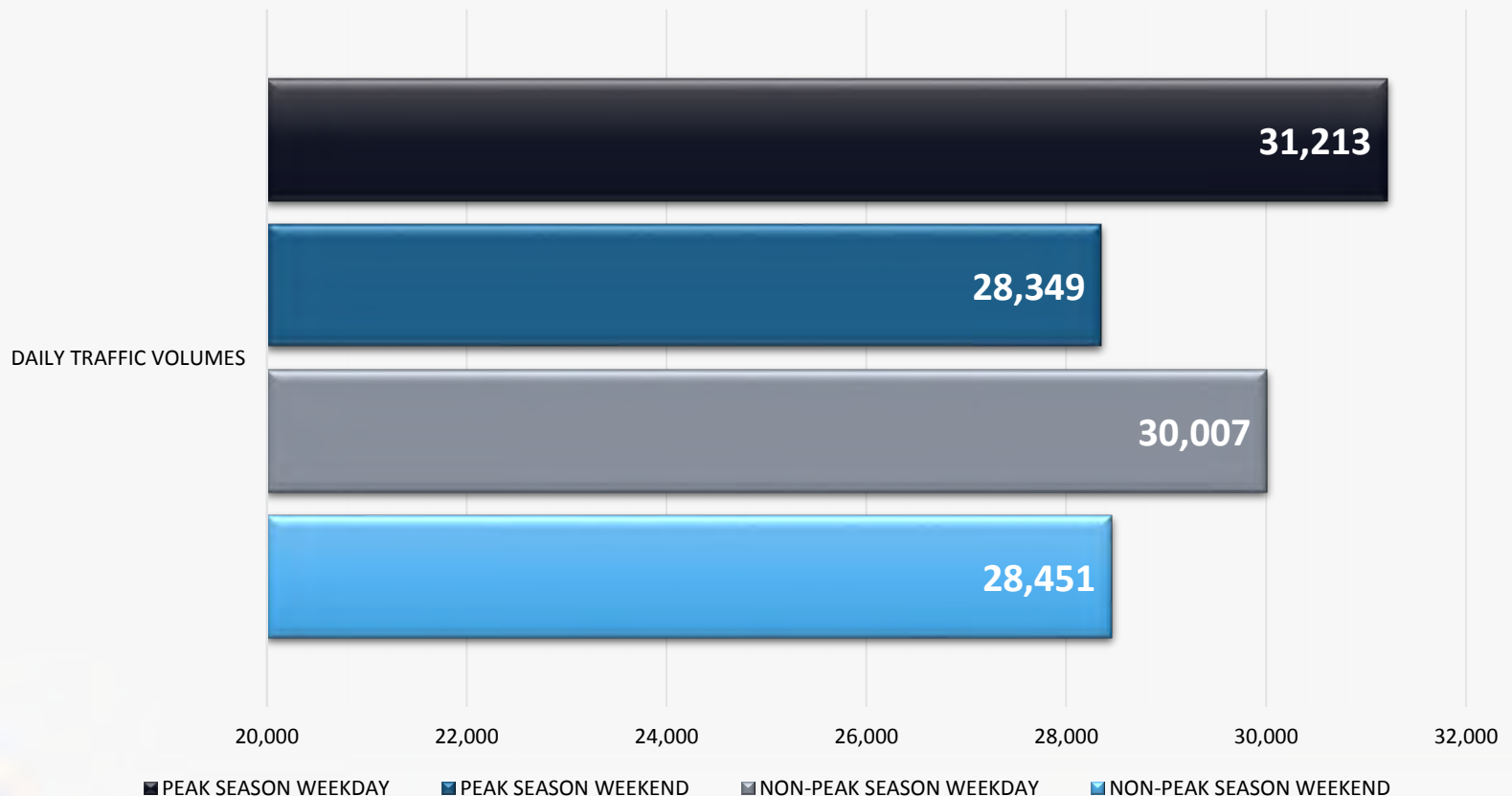
- ***FDOT reported 45 minute travel times on SR 60 from Lake Drive to Island Way - March 2015 (3.25 miles)***
- ***3.9% difference in weekday peak/non-peak traffic volumes on the Tom Stuart Causeway – Winter/Spring 2016***
- ***0.3% difference in weekend peak/non-peak traffic volumes on the Tom Stuart Causeway – Winter/Spring 2016***



MOBILITY AND MULTI-MODAL ACCESS



SR 666 Tom Stuart Causeway between Gulf Blvd. and Boca Ciega Bay – Winter/Spring 2016



MOBILITY AND MULTI-MODAL ACCESS



- **“Our road systems are limited. It’s just the way it is. There’s no way we’ll be able to expand our roads to handle some of the traffic that permeates our beach areas. It’s just not going to happen.” - Bill Horne, Clearwater City Manager, Tampa Bay Newspapers Weekly (9/1/15)**



EMERGING TECHNOLOGIES



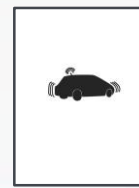
Smart Parking Systems



Bike Sharing



EMERGING TECHNOLOGIES



Connected Vehicles



LAND USE



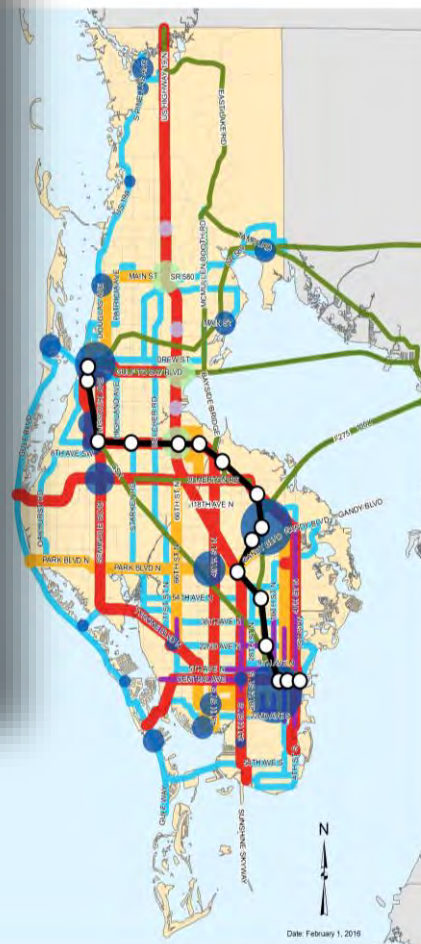
Legend

Activity Centers

-  Special Centers
-  Major Centers
-  Community Centers
-  Neighborhood Centers
-  Transit Station Centers

Multimodal Corridors

-  Special Corridors
-  Primary Corridors
-  Secondary Corridors
-  Supporting Corridors
-  Regional Corridors





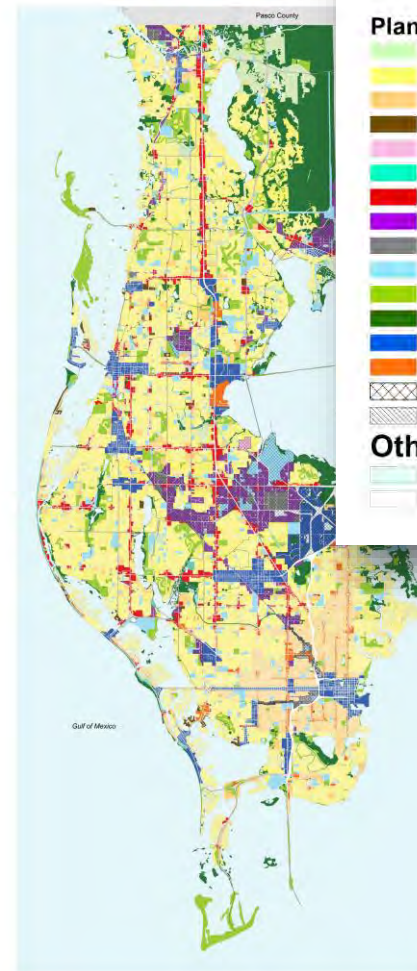
Countywide Plan Map

Plan Map Categories

-  Residential Very Low
-  Residential Low Medium
-  Residential Medium
-  Residential High
-  Office
-  Resort
-  Retail & Services
-  Employment
-  Industrial
-  Public/Semi-Public
-  Recreation/Open Space
-  Preservation
-  Activity Center
-  Multimodal Corridor
-  Target Employment Center
-  Scenic/Noncommercial Corridor

Other Identified Areas

-  Submerged Land
-  Right-of-Way



LAND USE



**Mix of Compatible
Uses**

Building Placement

Street Orientation

Parking Orientation

Site Amenities



**More
Transportation
Options**



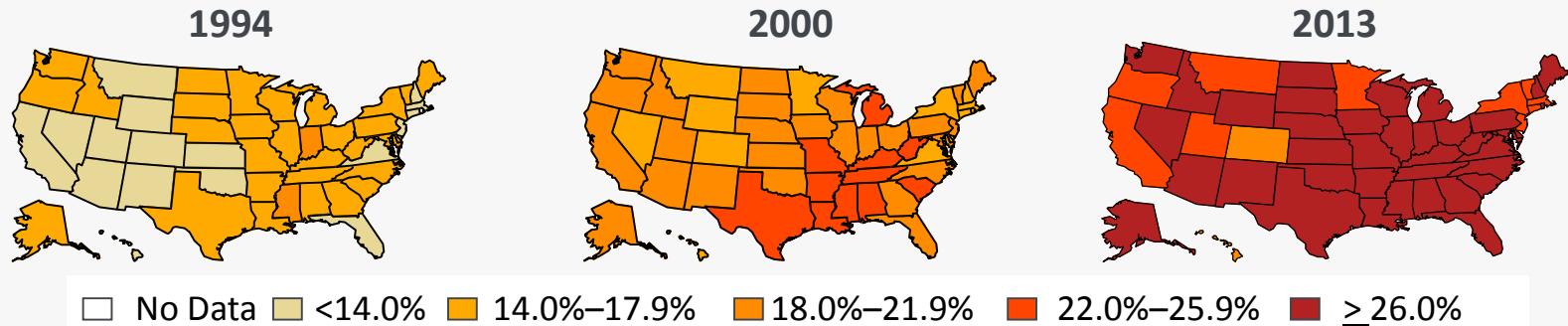
LAND USE



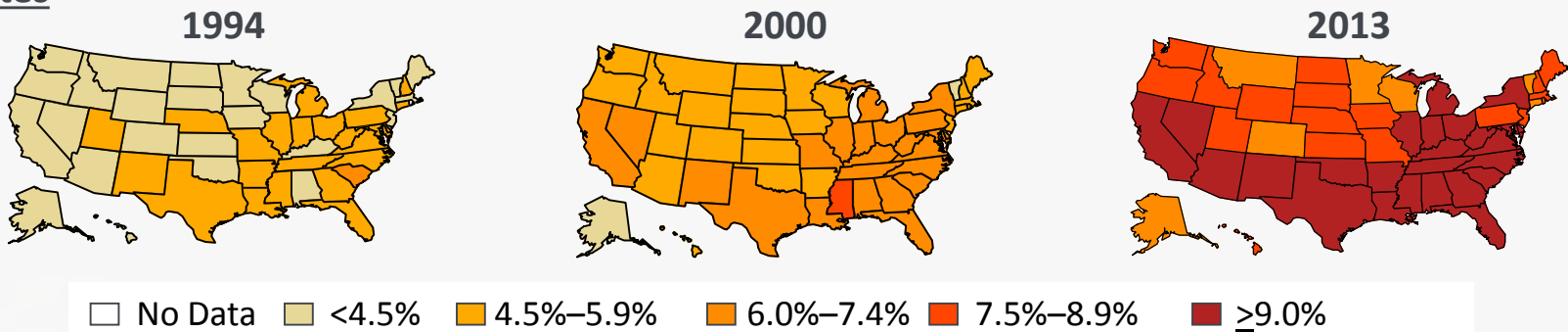


Age-adjusted Prevalence of Obesity and Diagnosed Diabetes Among US Adults

Obesity (BMI ≥ 30 kg/m²)



Diabetes



CDC's Division of Diabetes Translation. National Diabetes Surveillance System available at <http://www.cdc.gov/diabetes/statistics>



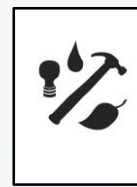
COMMUNITY AND HEALTH



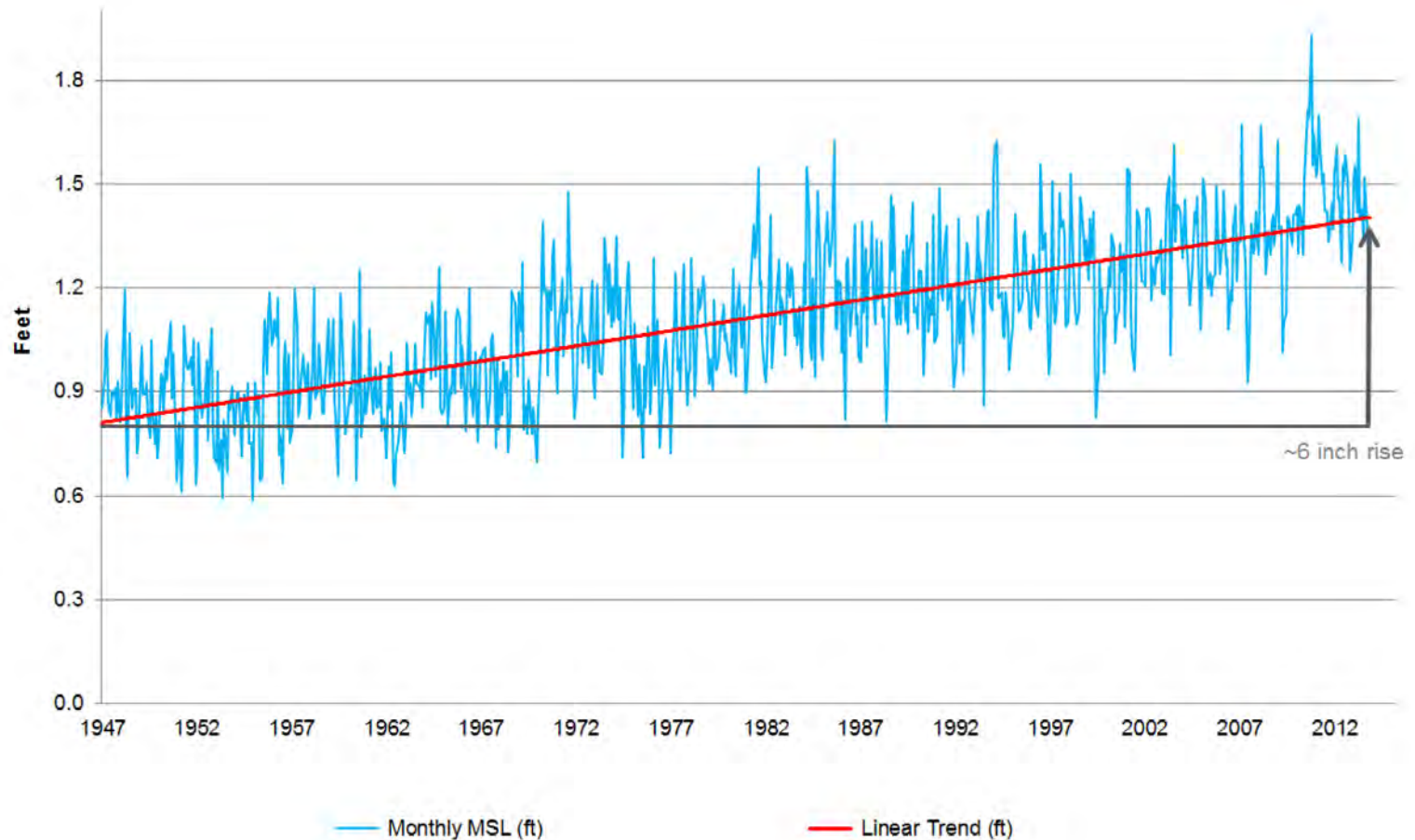
- Pinellas County residents have higher prevalence of overweight and obesity, stroke, heart disease, and diabetes than the general population in the Florida or the United States
- The goal is to create safe, walkable environments that allow people to safely access beaches, parks, healthy food, and trails



RESILIENCE AND SUSTAINABILITY



Mean Sea Level Trend St. Petersburg, Florida



Source: NOAA Tide Gauge #8726520





Florida Gulf Coast

Historic Relative Sea Level Change

Relative Sea Level Change = Estimated Global Sea Level Trend (1.7 mm/year) + local Vertical Land Motion

Reference: NOAA Technical Report NOS CO-OPS 065, *Estimating Vertical Land Motion from Long-Term Tide Gauge Records*, May 2013

Tide Station (# and Name)	mm/year
8727520 Cedar Key	1.81
8726724 Clearwater Beach	2.56
8726520 St. Petersburg	2.62
8725520 Fort Myers	2.32
8724580 Key West	2.20



RESILIENCE AND SUSTAINABILITY

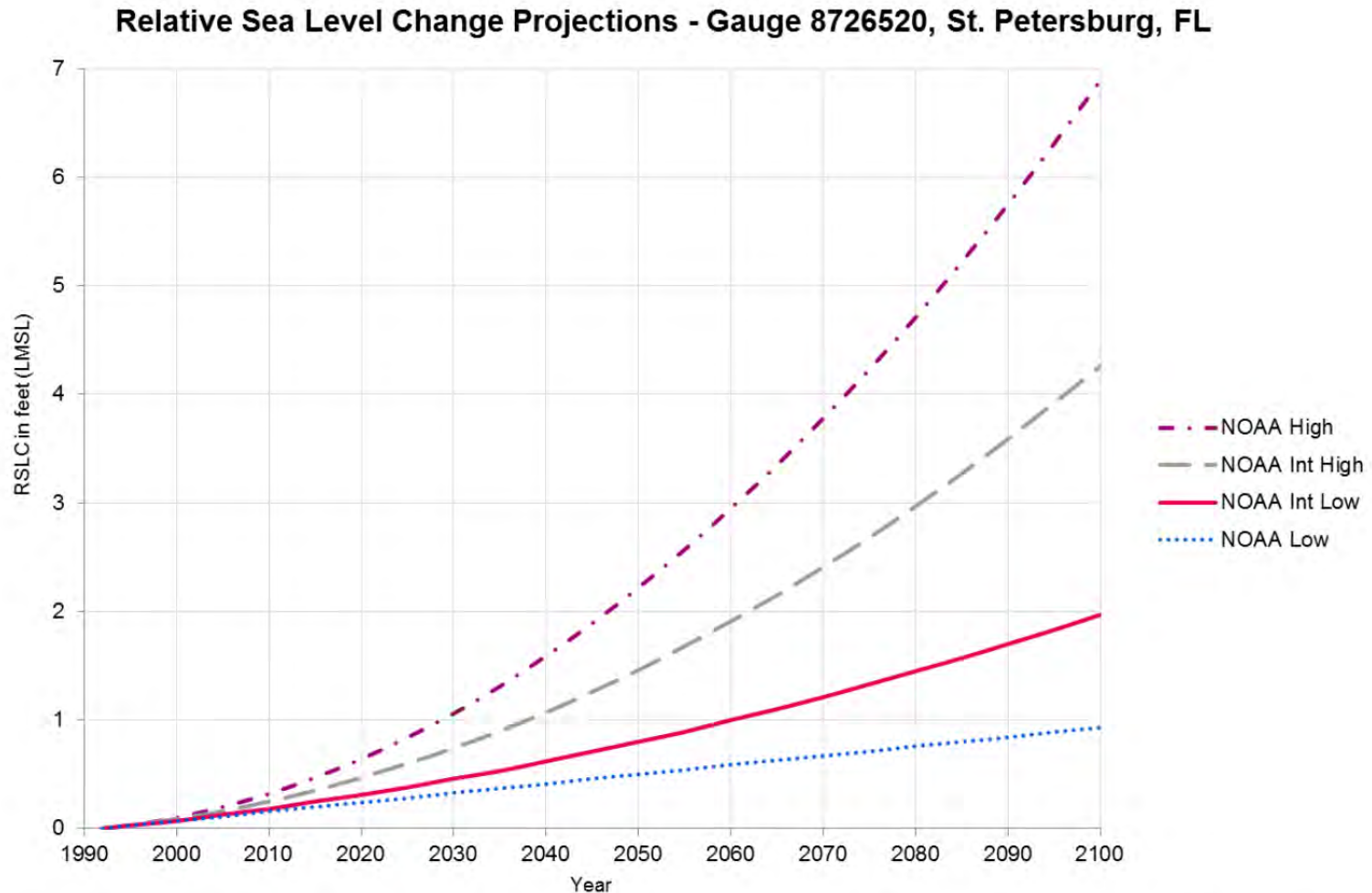
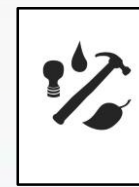
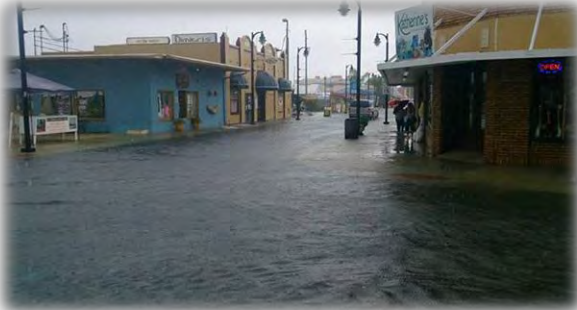


Figure 3. Graphic Relative Sea Level Change (RSLC) Scenarios for St. Petersburg, Florida, as calculated using the NOAA projections and regional corrections. (USACE, 2015)



Sea Level Change Concerns on Florida's Gulf Coast



© 2030, In
Google



- **Direct Impacts**
(Sea level rise + waves or storm surge)
- **Flood Drainage**
(increased frequency, depth and/or duration of flooding of **roads in coastal and interior areas**)
- **Natural System**
(coastal ecosystems and rapid peat loss)



SPC St. Petersburg College
INSTITUTE FOR STRATEGIC POLICY SOLUTIONS

ISGP Institute on Science for Global Policy



**Sea Level Rise:
What's Our Next Move?**

INTER-AGENCY COORDINATION/PUBLIC INVOLVEMENT



POTENTIAL ACTIVITIES



POTENTIAL ACTIVITIES

Cable Aerial Propelled Transit



Bus Rapid Transit (BRT)



Waterborne Transportation



Trolley Transit



POTENTIAL ACTIVITIES

Dynamic Message Signs



Gulf Blvd. Safety Improvements



Vision Zero



Compact & Walkable Land Use Planning (Form-Based Code)



KEY QUESTION - ECONOMIC DEVELOPMENT

How should we go about this?

What do you like, don't like?

What ideas do you have?



PLEASE STAY CONNECTED WITH US...

Survey: <http://goo.gl/forms/3p48SoK0g2>

Website: www.pinellascounty.org/mpo - “PinellasSPOTlight”



Facebook: Pinellas County Metropolitan Planning Organization



Twitter: @PinellasMPO



LinkedIn: Pinellas County Metropolitan Planning Organization

