



PINELLAS TRANSPORTATION PLAN

PINELLAS COUNTY METROPOLITAN PLANNING ORGANIZATION



SURROUNDED BY WATER ON THREE SIDES, PINELLAS COUNTY HAS VERY LITTLE UNDEVELOPED LAND REMAINING. AS WE LOOK TO THE FUTURE, HOW CAN THE COUNTY BEST ACCOMMODATE FUTURE GROWTH, ATTRACT NEW JOBS, AND MAINTAIN THE QUALITY OF LIFE ENJOYED BY THE NEARLY ONE MILLION PEOPLE WHO CALL PINELLAS HOME?

CURRENT TREND

What would happen if the present trend continues? New growth continues to spread across the county, placing development pressure on established communities. No major changes are made to transit, and congestion is addressed by completing remaining road projects, intersection improvements, and congestion management technology.

WHERE DO PEOPLE LIVE?



Most people continue to live in single family homes separated from amenities and job centers.

HOW DO PEOPLE GET AROUND?

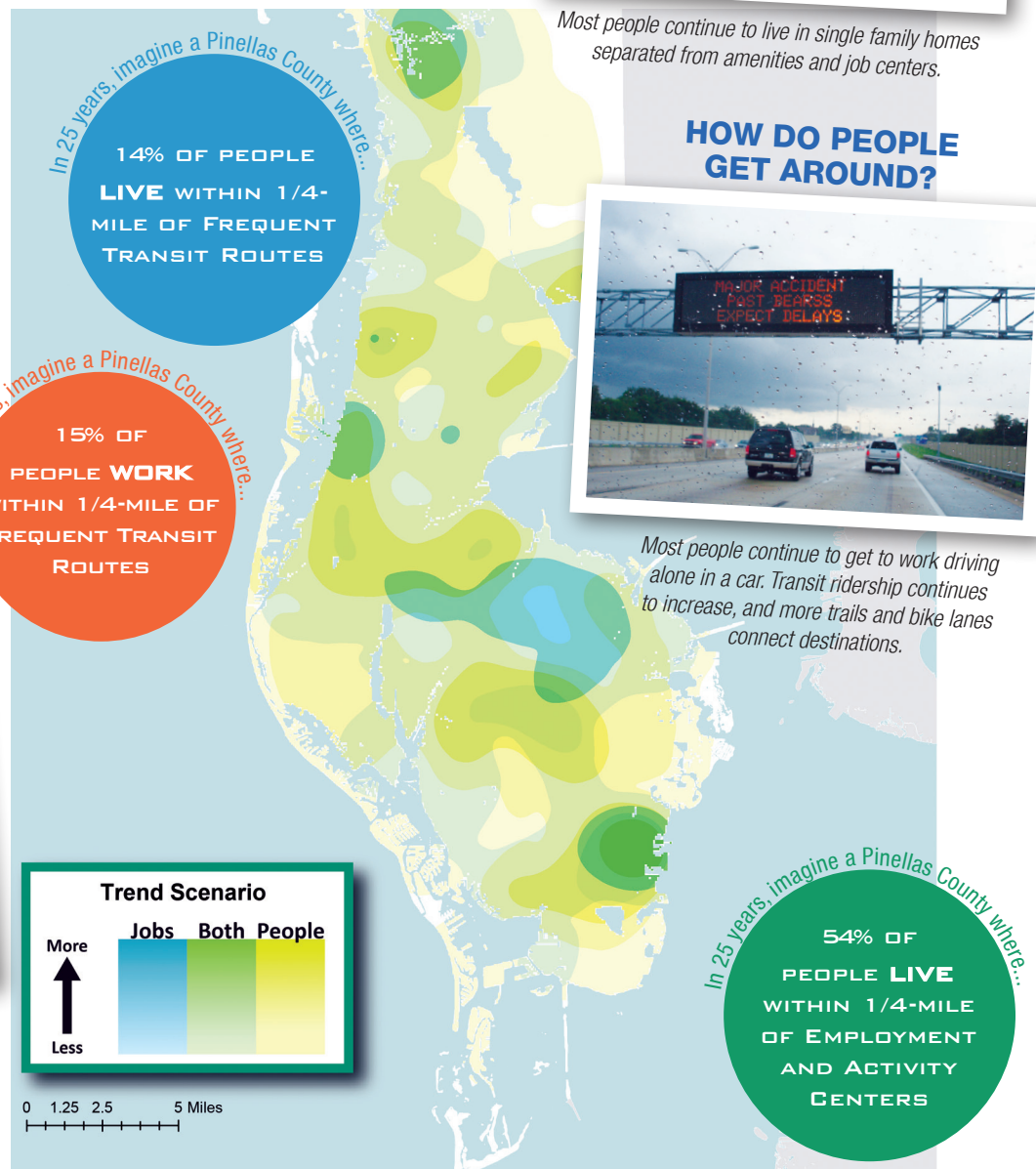


Most people continue to get to work driving alone in a car. Transit ridership continues to increase, and more trails and bike lanes connect destinations.

WHERE DO PEOPLE WORK?



The current job and activity centers would see some growth. Downtown St. Petersburg, Downtown Clearwater, and Greater Gateway would capture most employment opportunities, with others spreading along key roads or into neighboring counties.



INVESTMENT IN TRANSIT AND LAND USE Changing our land use rules and the way we invest in transportation can drastically change our future and lead to what people say they want: more travel options, safe places to walk and bike, vibrant downtowns and stable neighborhoods, and a dynamic Pinellas County with job growth.

This future assumes major improvements to bus service, a new light rail transit system, and the completion of remaining major roadway projects. Buses will come every 15 minutes along many roads, and light rail service would connect Downtown Clearwater, Greater Gateway, and Downtown St. Petersburg, with significant changes in population and employment growth concentrated around transit station areas.

WHERE DO PEOPLE LIVE?



Housing choices are increased, and Pinellas County residents, including a substantial number of people new to the county, can find homes in stable neighborhoods with single family homes, as well as newly redeveloped areas near the transit stations with townhomes, condos, and apartments.

WHERE DO PEOPLE WORK?



Employment growth is seen across the county, with new industries and jobs being attracted to station areas with concentrations of activity, work, and life.

HOW DO PEOPLE GET AROUND?



While cars are still common, it is not necessary to own or drive a car to get around conveniently. Tourists are able to travel to and from the airports, beaches, parks, and other attractions. Bicycle and pedestrian investments continue, and people feel safer traveling by these modes.

