

# Training Location Map

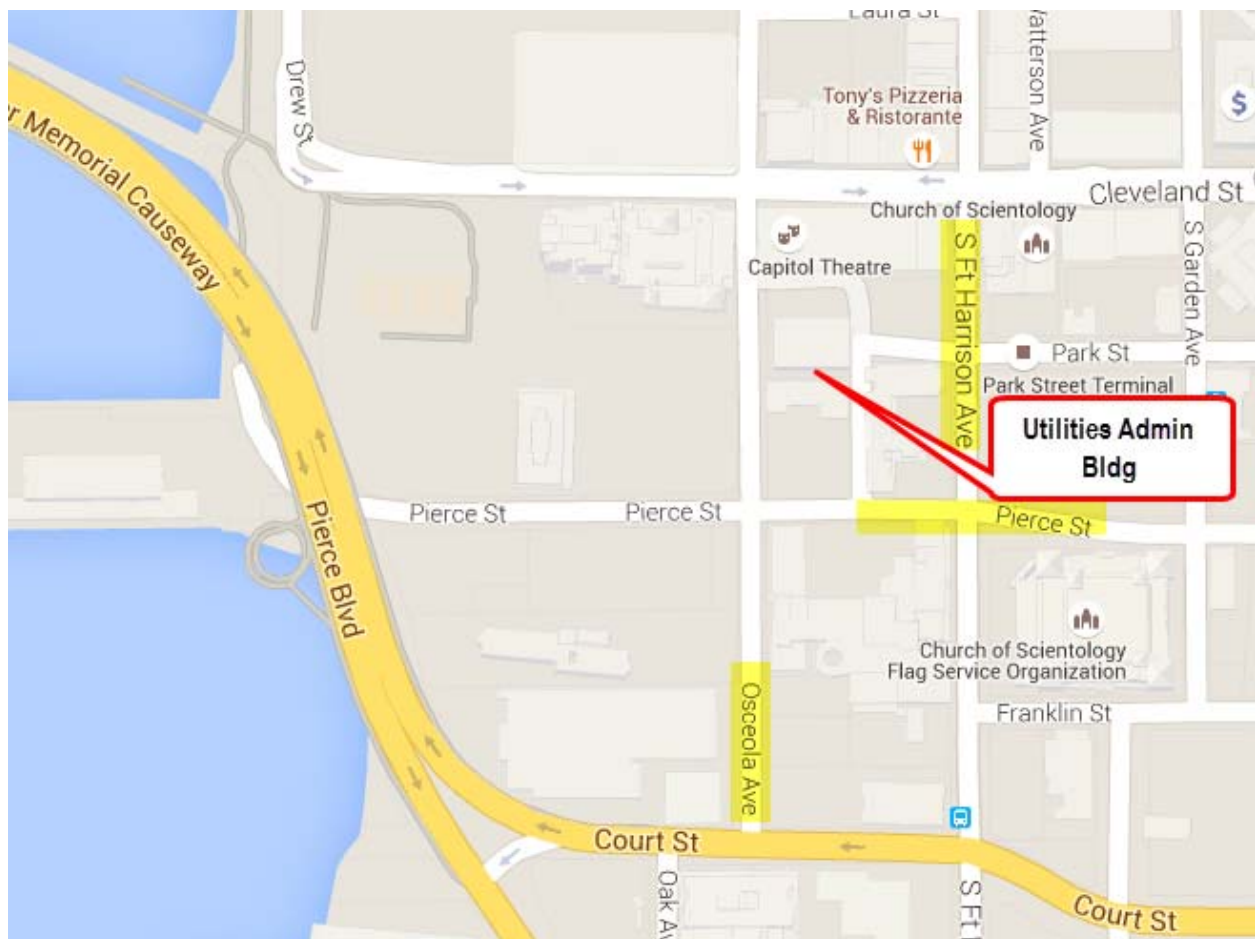
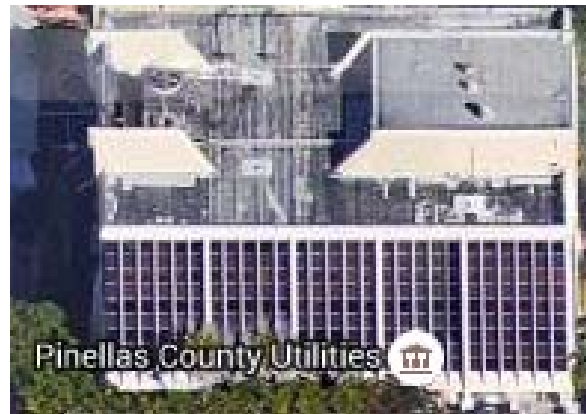
## Utilities Administration Building

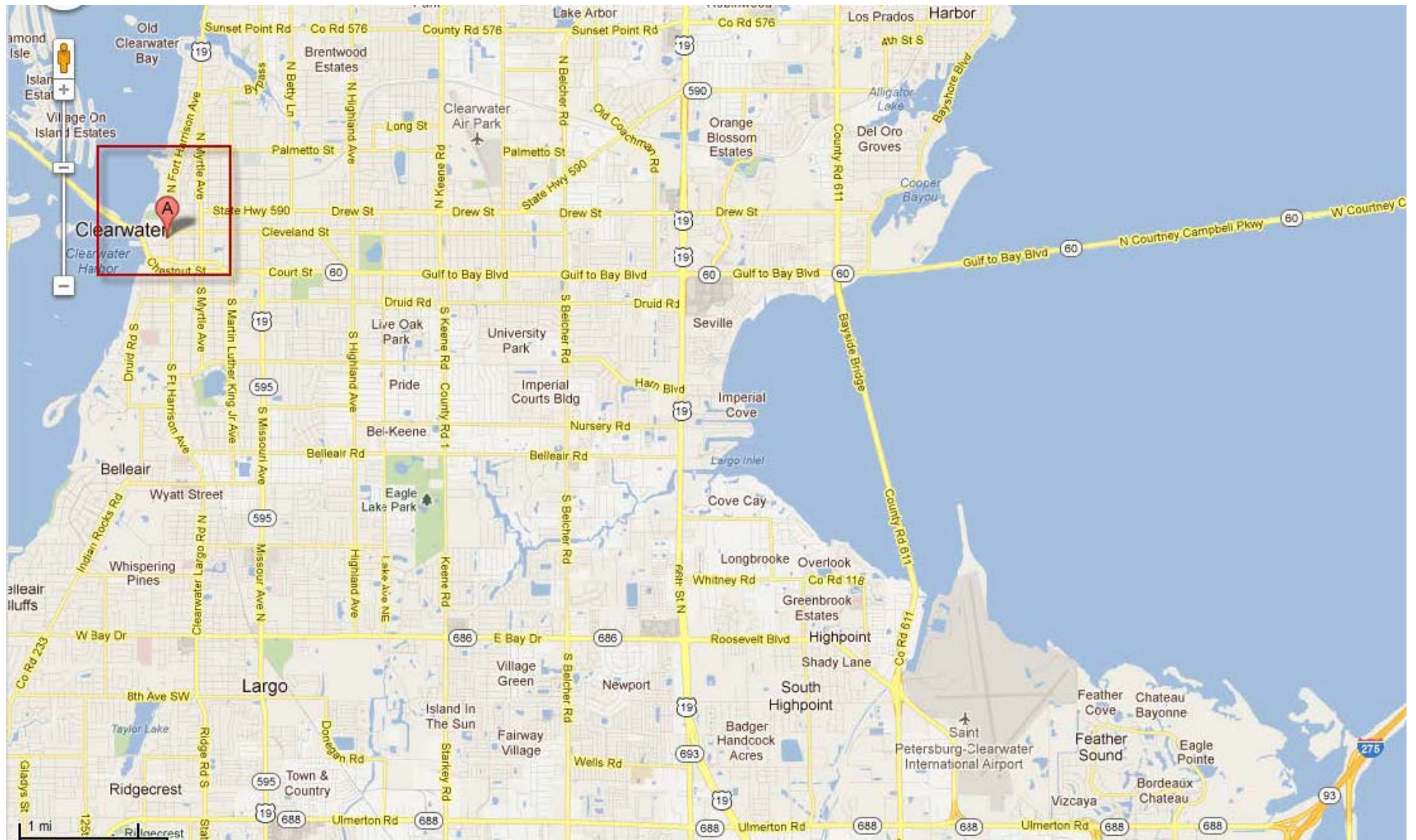
Pinellas County  
Human Resources

*Helping U Succeed*

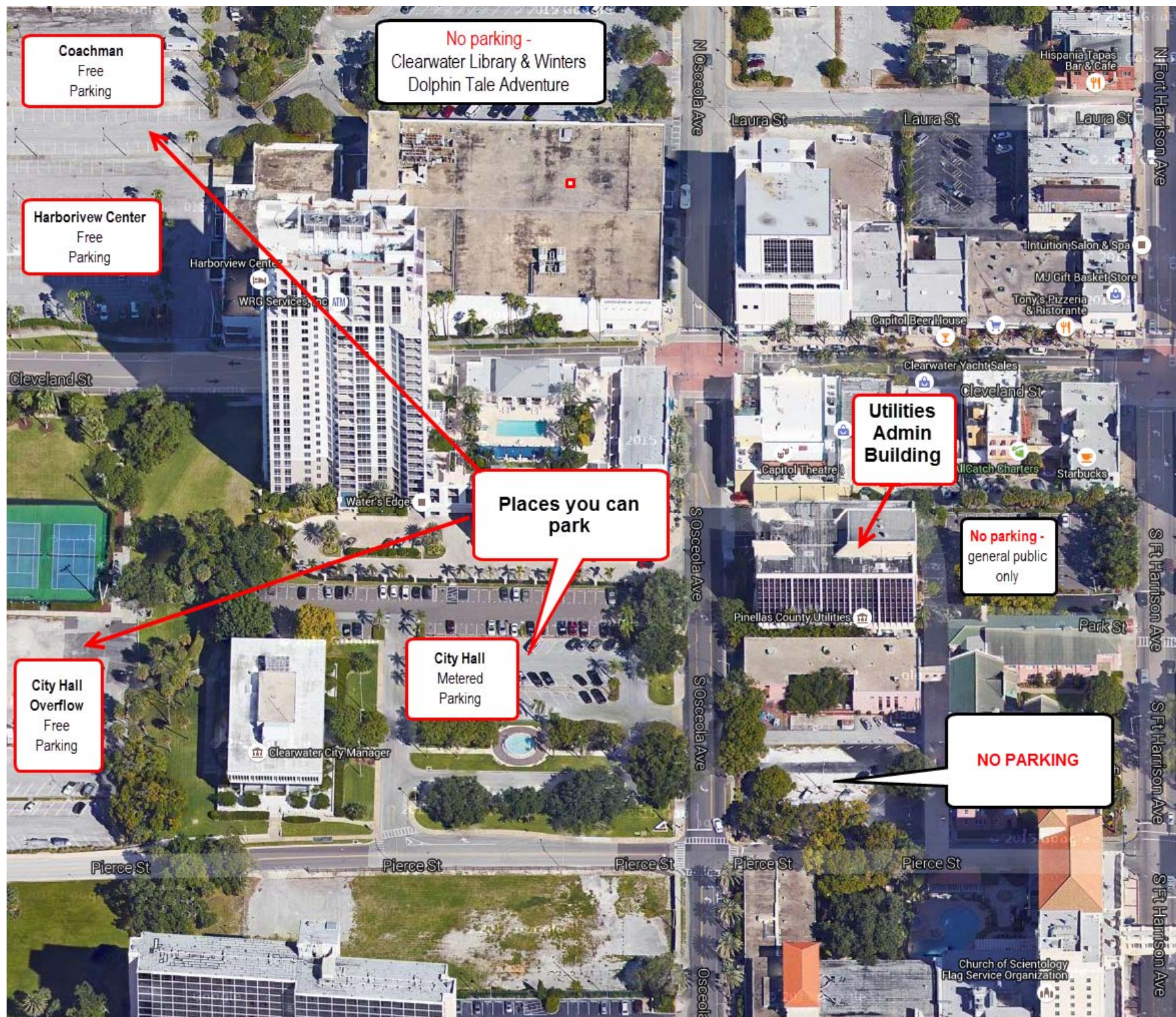
[www.pinellascounty.org/hr/training](http://www.pinellascounty.org/hr/training)  
(727) 464-3796

Utilities Administration Building  
14 South Fort Harrison Avenue  
Clearwater, FL 33756









**Coachman**  
Free  
Parking

**No parking -**  
Clearwater Library & Winters  
Dolphin Tale Adventure

**Harborview Center**  
Free  
Parking

Harborview Center

WRG Services, Inc. ATM

Cleveland St

Water's Edge

**Places you can  
park**

**Utilities  
Admin  
Building**

Capitol Theatre

**No parking -**  
general public  
only

**City Hall  
Overflow**  
Free  
Parking

Clearwater City Manager

**City Hall  
Metered  
Parking**

Pinellas County Utilities

**NO PARKING**

Pierce St

Pierce St

Pierce St

Pierce St

Pierce St

Church of Scientology  
Flag Service Organization

Hispania Tapas  
Bar & Cafe

Intuition Salon & Spa

MJ Gift Basket Store

Tony's Pizzeria  
& Ristorante

Capitol Beer House

Clearwater Yacht Sales

Catch Charters

Starbucks

N Fort Harrison Ave

S Ft Harrison Ave

S Ft Harrison Ave

S Ft Harrison Ave

N Osceola Ave

Laura St

Laura St

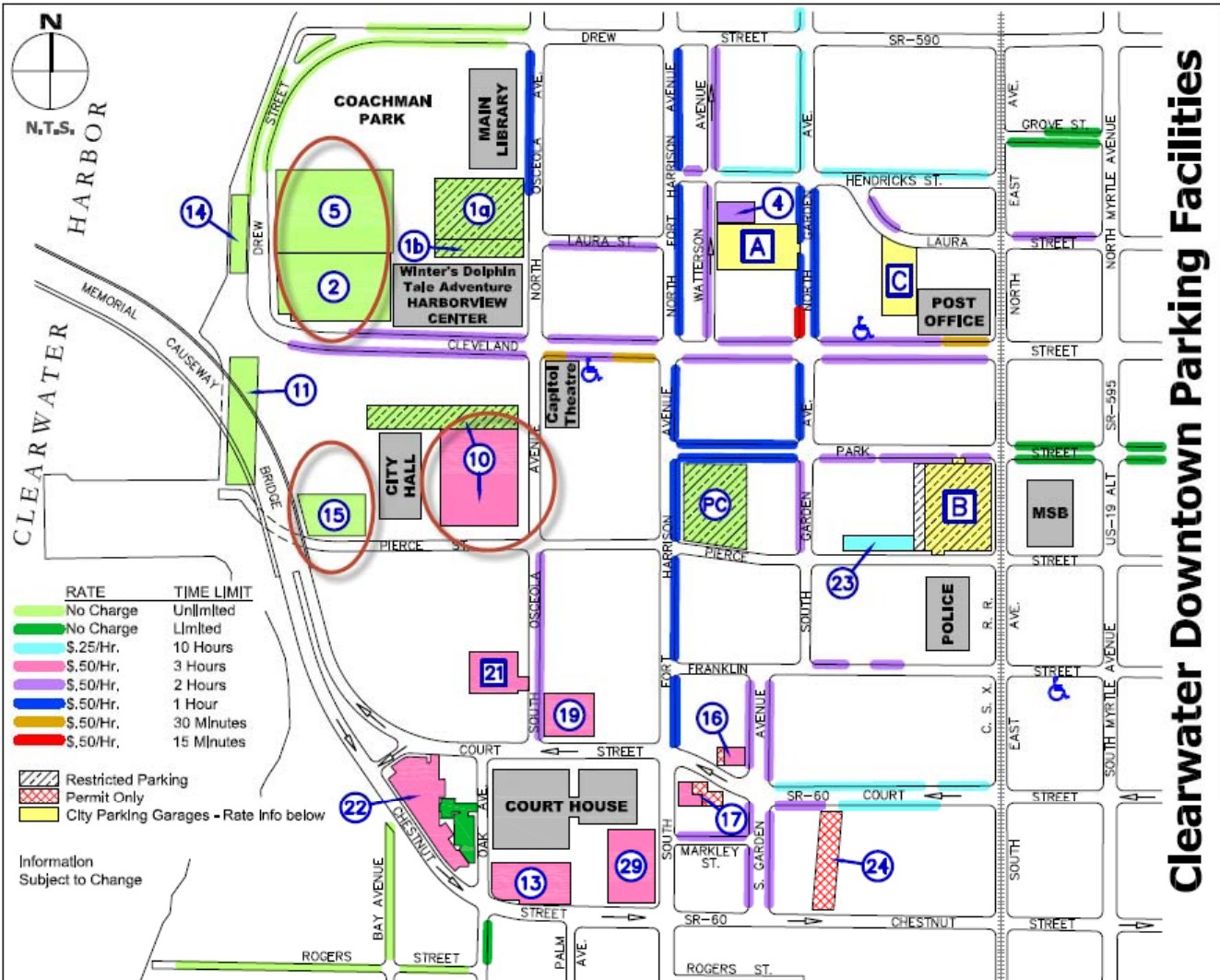
Laura St

S Osceola Ave

S Osceola Ave

Osceola





# Clearwater Downtown Parking Facilities

## CITY GARAGES

|                                 | ADDRESS           | NO. SPACES | HOURLY/MONTHLY RATE                         |
|---------------------------------|-------------------|------------|---|
| A GARDEN AVENUE GARAGE          | 28 GARDEN AVE.    | 250        | \$.50 (\$5.00/day, \$48.15/mo.) M-F 7am-7pm |
| B MUNICIPAL SVCS. GARAGE        | 640 PIERCE ST.    | 474        | Employees only M-F 6am-6pm                  |
| C STATION SQUARE PARKING GARAGE | 628 CLEVELAND ST. | 96         | \$.50 (\$5.00/day, \$48.15/mo.) M-F 8am-6pm |

## PARKING LOTS

|                                   | ADDRESS                          | NO. SPACES |
|-----------------------------------|----------------------------------|------------|
| 1a LIBRARY                        | 36 N. OSCEOLA AVE.               | 76         |
| 1b WINTERS DOLPHIN TALE ADVENTURE | 36 N. OSCEOLA AVE.               | 50         |
| 2 HARBORVIEW CENTER               | 300 CLEVELAND ST.                | 168        |
| 4 N. GARDEN AVE.                  | 35 WATTERSON AVE.                | 9          |
| 5 COACHMAN                        | 101 DREW ST.                     | 261        |
| 10 CITY HALL                      | 112 S. OSCEOLA AVE.              | 51/66      |
| 11 DOWNTOWN BOAT SLIPS SOUTH      | 150 PIERCE ST.                   | 42         |
| 13 LARGE COURTHOUSE LOT           | 475 OAK AVE.                     | 35         |
| 14 DOWNTOWN BOAT SLIPS NORTH      | 100 DREW ST.                     | 19         |
| 15 CITY HALL OVERFLOW             | 220 PIERCE ST.                   | 63         |
| 16 COURT ST. & GARDEN AVE.        | 318 GARDEN AVE.                  | 7          |
| 17 COURT STREET & FT. HARRISON    | 351 S. FT. HARRISON AVE.         | 20         |
| 19 COURT ST. & OSCEOLA AVE.       | 311 S. OSCEOLA AVE.              | 39         |
| 21 COUNTY PARKING GARAGE          | 310 COURT ST.                    | 11         |
| 22 OAK AVE.                       | 450 OAK AVE.                     | 85/39      |
| 23 PARK / PIERCE ST.              | 620 PIERCE ST.                   | 18/12      |
| 24 CHESTNUT ST.                   | 615 COURT ST.                    | 37         |
| 29 FT. HARRISON AVE.              | 420 S. FT. HARRISON AVE.         | 26         |
| PC PINELLAS COUNTY LOT            | NE CORNER PIERCE AND FT HARRISON | 105        |

## DOWNTOWN STREETS

|                   | NO. SPACES |
|-------------------|------------|
| ON STREET PARKING | 407        |



### Notes:

- Downtown rates in effect 8:00 am - 6:00 pm, Monday - Friday, all other times no charge, except where posted;
- Does not include handicap, reserved spaces or Permit Only spaces.



**General Parking Information: (727) 562-4704**  
**Parking System Hotline: (727) 562-4892**  
[www.myClearwater.com/parking](http://www.myClearwater.com/parking)