

MEDICAL EXAMINER
District Six
Pasco & Pinellas Counties



10900 Ulmerton Road
Largo, FL 33778
727-582-6800
(Fax 727-582-6820)
www.co.pinellas.fl.us/forensics

YEAR 2012

MEDICAL EXAMINER

ANNUAL REPORT

Published 4/29/13

TABLE OF CONTENTS

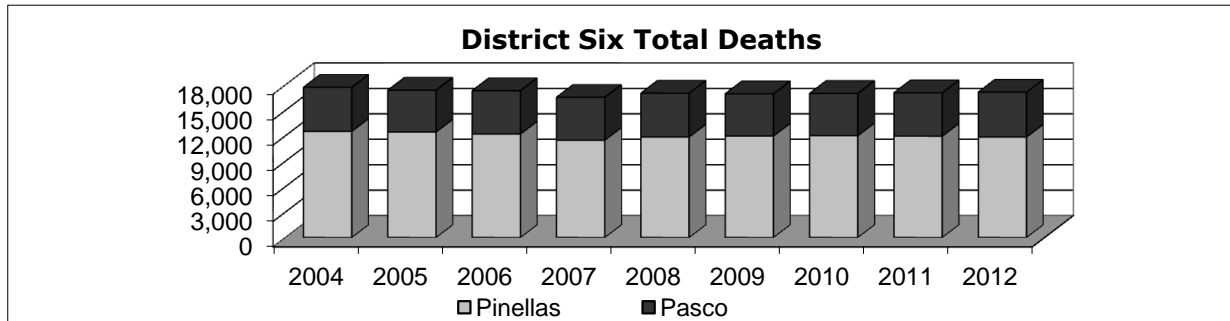
Section:	Page #:
Population, District Deaths, Cases Accepted	1
Workload by Type of Examination	2
Scenes Investigated, Persons Transported	3
Deaths By Manner of Death	4
Homicide Investigations	5
Suicide Investigations	6
Accidental Deaths, Motor Vehicle Deaths	7 - 9
Accidental Deaths, Non-Motor Vehicle Related	10
Infant Deaths	11 - 12
Infant & Child Deaths (age 1-17)	13
Drowning Deaths	14
Toxicology - Drug Positive & Drug Cause of Death	15 - 17
Unidentified Persons	18 - 20
Indigent / Unclaimed Persons	21
Organ & Tissue Donation	21
Exhumations	21

	2004	2005	2006	2007	2008	2009	2010	2011	2012
Population *									
Pinellas	944,966	947,744	924,413	917,437	940,645	931,113	916,542	917,398	920,381
Pasco	392,507	406,857	450,171	462,715	441,188	438,668	464,697	466,457	468,562
Total	1,337,473	1,354,601	1,374,584	1,380,152	1,381,833	1,369,781	1,381,239	1,383,855	1,388,943

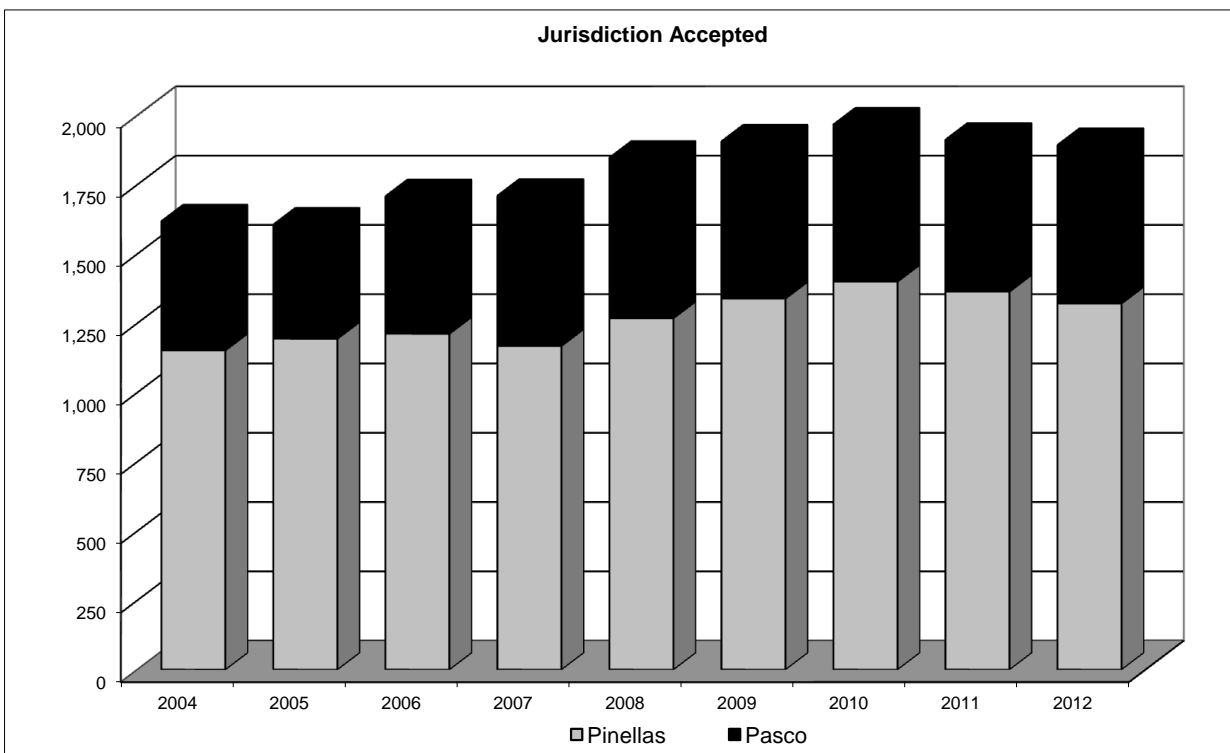
* SOURCE: University of Florida Bureau of Economic and Business Research. (<http://www.behr.ufl.edu/population>)

	2004	2005	2006	2007	2008	2009	2010	2011	2012
District Deaths *									
Pinellas	12,518	12,447	12,207	11,484	11,859	11,968	12,012	11,961	11,850
Pasco	5,201	4,926	5,108	5,053	5,161	4,978	4,981	5,104	5,294
Total	17,719	17,373	17,315	16,537	17,020	16,946	16,993	17,065	17,144

* SOURCE: Office of Vital Statistics, Florida Department of Health (<http://www.flpublichealth.com/VSBOOK/VSBOOK.aspx>)

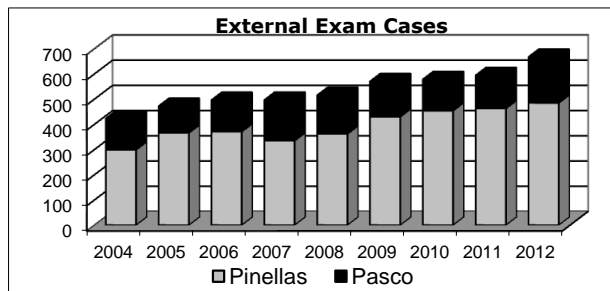
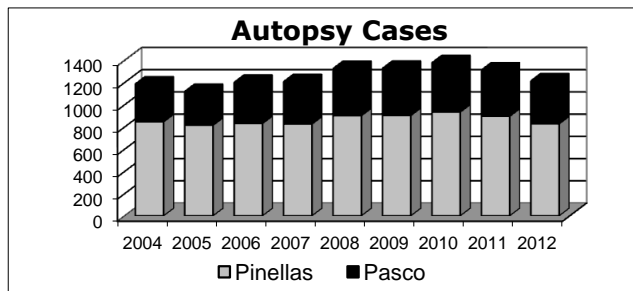


	2004	2005	2006	2007	2008	2009	2010	2011	2012
Cases Accepted									
Pinellas	1,152	1,194	1,212	1,168	1,268	1,339	1,400	1,364	1,321
Pasco	466	412	496	542	579	567	567	548	572
Total	1,618	1,606	1,708	1,710	1,847	1,906	1,967	1,912	1,893

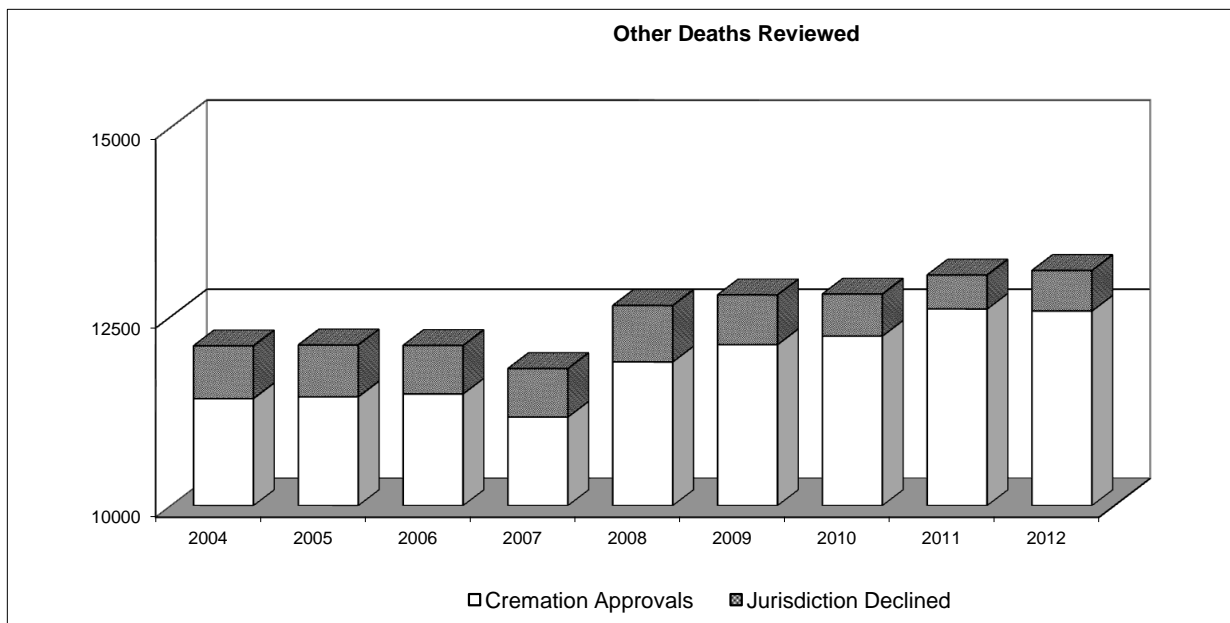


WORKLOAD BY TYPE OF EXAMINATION:

	2004	2005	2006	2007	2008	2009	2010	2011	2012
Autopsies									
Pinellas	847	816	832	827	902	904	935	897	829
(Partial Autopsies)	6	12	9	6	4	5	11	4	7
Pasco	339	303	369	380	423	423	442	415	385
(Partial Autopsies)	3	3	2	1	3	4	1	2	5
Total	1,195	1,134	1,212	1,214	1,332	1,336	1,389	1,318	1,226
External Exams									
Pinellas	299	366	371	335	362	430	454	463	485
Pasco	124	106	125	161	153	140	124	131	182
Total	423	472	496	496	515	570	578	594	667

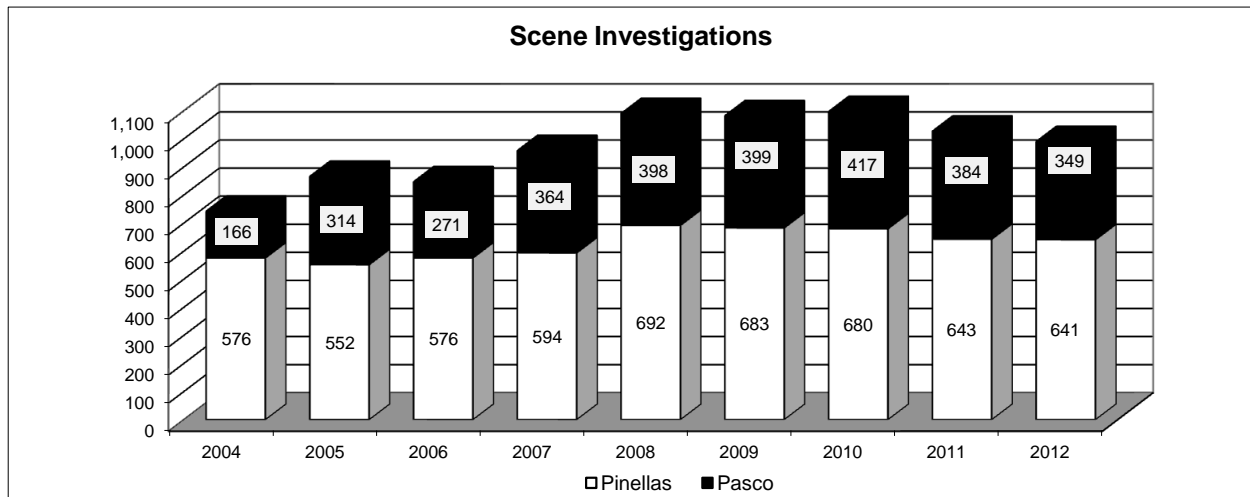


	2004	2005	2006	2007	2008	2009	2010	2011	2012
Cremation Approvals									
Pinellas	8,190	8,297	8,194	7,862	8,339	8,648	8,691	8,849	8,706
Pasco	3,224	3,140	3,282	3,309	3,560	3,479	3,549	3,750	3,866
Total	11,414	11,437	11,476	11,171	11,899	12,127	12,240	12,599	12,572
Jurisdiction Declined									
Pinellas	528	499	471	452	541	479	404	309	405
Pasco	169	187	169	188	204	178	151	139	130
Total	697	686	640	640	745	657	555	448	535



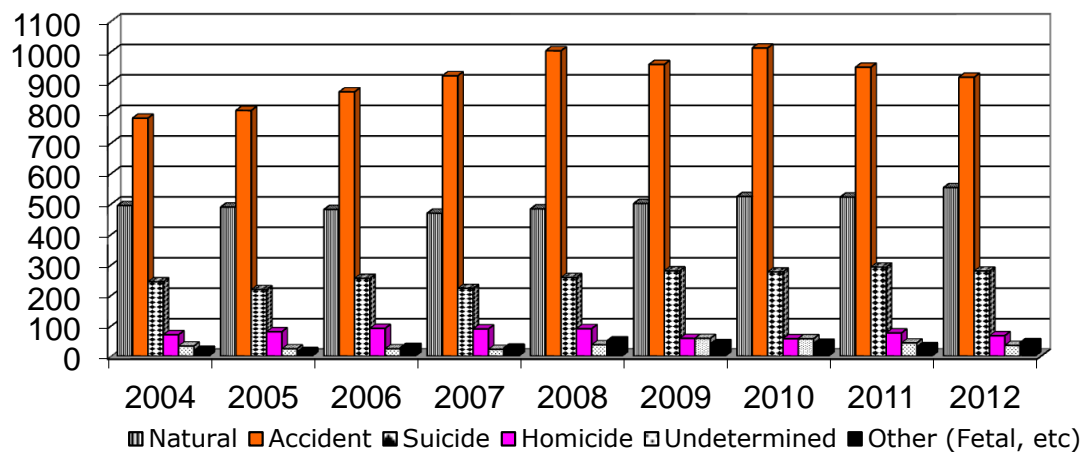
Decedent Transportation		2005	2006	2007	2008	2009	2010	2011	2012
<u>Pinellas</u>									
Medical Examiner Office		1180	1202	1153	1258	1281	1340	1315	1256
Life Link		11	10	14	12	8	6	9	5
Other		10	10	24	42	34	25	25	37
Total Pinellas		1201	1222	1191	1312	1323	1371	1349	1298
<u>Pasco</u>									
Medical Examiner Office		411	495	539	581	561	562	548	560
Life Link		1	2	1	0	1	0	0	3
Other		4	1	1	3	1	1	0	2
Total Pasco		416	498	541	584	563	563	548	565
District Total Transported		1,617	1,720	1,732	1,896	1,886	1,934	1,897	1,863

Scene Investigations		2004	2005	2006	2007	2008	2009	2010	2011	2012
Pinellas		576	552	576	594	692	683	680	643	641
Pasco		166	314	271	364	398	399	417	384	349
Total		742	866	847	958	1,090	1,082	1,097	1,027	990



District Deaths by Manner of Death	2004	2005	2006	2007	2008	2009	2010	2011	2012
Natural	494	489	481	469	483	501	524	522	553
Accident	781	806	867	920	1002	957	1011	948	915
Suicide	244	218	255	222	258	280	276	292	279
Homicide	70	80	91	89	90	58	57	76	67
Undetermined	33	24	24	22	37	58	57	43	35
Other (Fetal, etc)	19	15	28	26	50	41	42	31	44
Total	1,641	1,632	1,746	1,748	1,920	1,895	1,967	1,912	1,893

District Deaths by Manner of Death



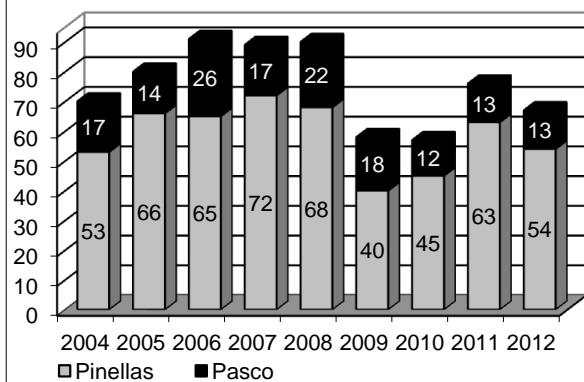
	2002	2003	2004	2006	2007	2008	2009	2010	2011	2012
TOTAL VIOLENT DEATHS	992	1,059	1,128	1,237	1,253	1,387	1,351	1,401	1,359	1,296

HOMICIDE DEATH INVESTIGATIONS

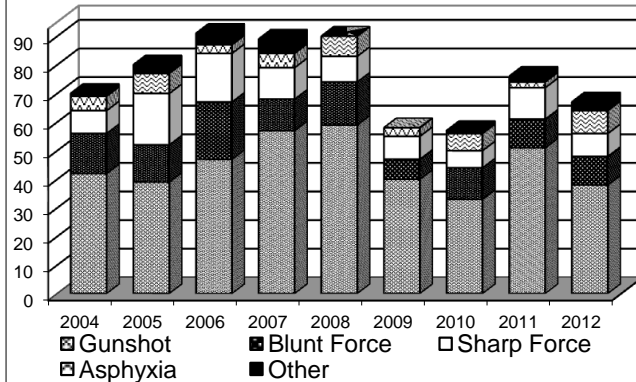
Homicides	2004	2005	2006	2007	2008	2009	2010	2011	2012
Pinellas	53	66	65	72	68	40	45	63	54
Pasco	17	14	26	17	22	18	12	13	13
Total	70	80	91	89	90	58	57	76	67

	2004	2005	2006	2007	2008	2009	2010	2011	2012
Gunshot	42	39	47	57	59	40	33	51	38
Blunt Force	14	13	20	11	15	7	11	10	10
Sharp Force	8	18	17	11	9	8	6	11	8
Asphyxia	5	7	3	5	7	3	6	2	8
Other	1	3	4	5	0	0	1	2	3

Homicide Death Investigations



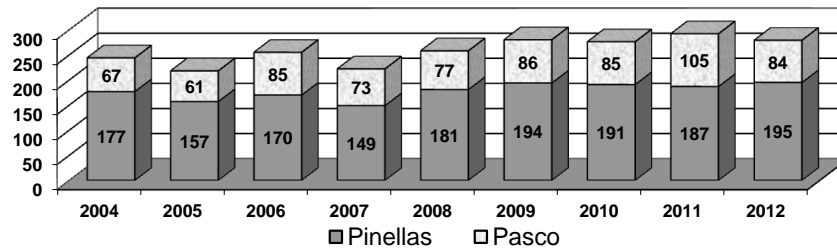
Homicide Method of Injury



SUICIDE DEATH INVESTIGATIONS

	2004	2005	2006	2007	2008	2009	2010	2011	2012
Pinellas	177	157	170	149	181	194	191	187	195
Pasco	67	61	85	73	77	86	85	105	84
Total	244	218	255	222	258	280	277	292	279

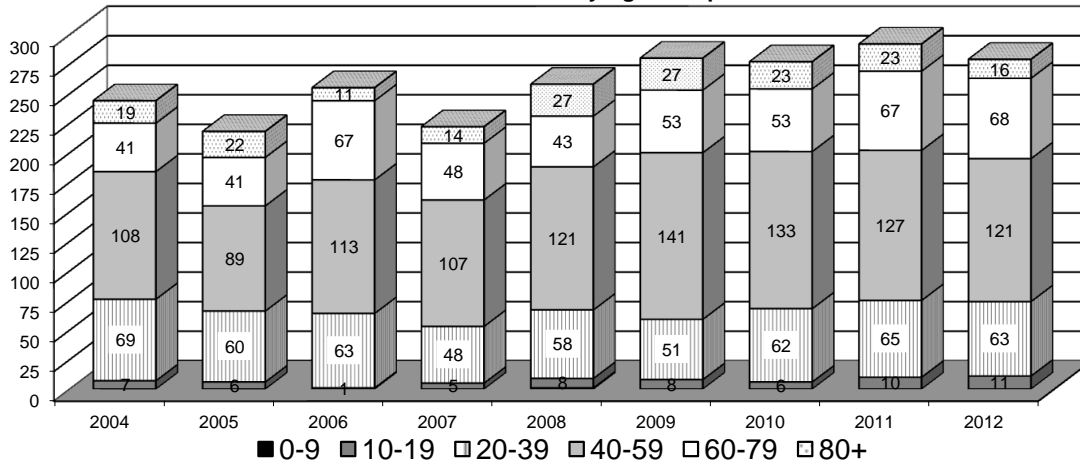
Suicide Death Investigations



SUICIDE GENDER	2004	2005	2006	2007	2008	2009	2010	2011	2012
Male	173	172	188	165	194	221	216	223	199
Female	71	46	67	57	64	59	60	69	80

Age Group	2004	2005	2006	2007	2008	2009	2010	2011	2012
0-9					1	0	0	0	0
10-19	7	6	1	5	8	8	6	10	11
20-39	69	60	63	48	58	51	62	65	63
40-59	108	89	113	107	121	141	133	127	121
60-79	41	41	67	48	43	53	53	67	68
80+	19	22	11	14	27	27	23	23	16
Total	244	218	255	222	258	280	277	292	279

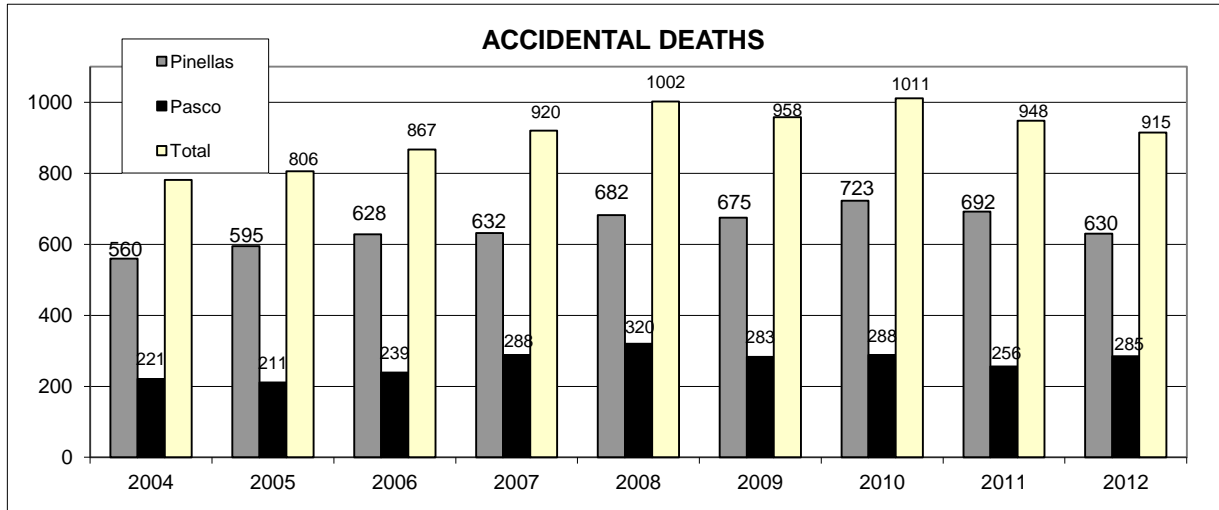
Suicide Deaths by Age Group



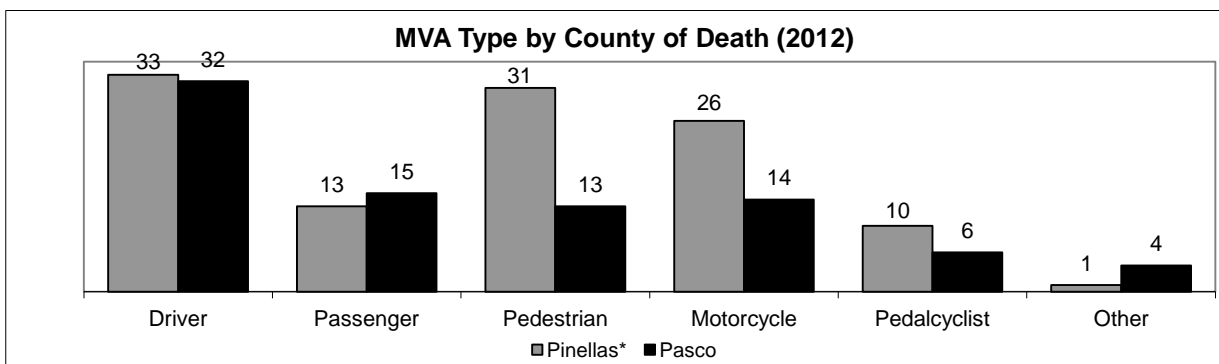
ACCIDENTAL DEATH INVESTIGATIONS

TOTAL ACCIDENTAL DEATHS (Motor Vehicle Accident (MVA) & Non-Motor Vehicle Accident)

	2004	2005	2006	2007	2008	2009	2010	2011	2012
Pinellas	560	595	628	632	682	675	723	692	630
Pasco	221	211	239	288	320	283	288	256	285
Total	781	806	867	920	1002	958	1011	948	915



MOTOR VEHICLE DEATHS



Traffic Fatalities by County of Death for Year 2012

*** Includes victims that sustained injuries in counties other than Pinellas, but were taken to Pinellas hospitals and eventually died in Pinellas from injuries sustained in the other county.**

	Pinellas*	Pasco	District
Driver	33	32	65
Passenger	13	15	28
Pedestrian	31	13	44
Motorcycle	26	14	40
Pedalcyclis	10	6	16
Other	1	4	5
Totals:	114	84	198

	2004	2005	2006	2007	2008	2009	2010	2011	2012
Driver	76	86	85	90	88	74	79	58	65
Passenger	29	44	38	46	30	25	28	20	28
Pedestrian	72	63	53	42	56	50	41	61	44
Motorcycle	36	32	42	57	55	37	41	46	40
Pedalcyclist	23	18	13	12	16	15	9	20	16
Other	6	3	18	4	4	7	6	4	5
Total	242	246	249	251	249	208	204	209	198

MOTOR VEHICLE DEATHS CONT..

DRIVERS	2004	2005	2006	2007	2008	2009	2010	2011	2012
Less than 20 Years of Age	3	5	5	10	6	4	1	3	2
20-29	15	12	16	17	18	15	12	11	16
30-39	6	6	9	6	16	6	9	4	5
40-49	13	10	16	11	14	7	13	5	4
50-59	8	13	9	18	7	11	10	11	9
60-69	4	9	7	7	5	8	11	5	8
70-79	8	14	11	6	14	11	9	10	9
80-89	18	17	10	12	7	10	10	6	11
90+	1	0	2	3	1	2	4	3	1
Totals	76	86	85	90	88	74	79	58	65

MOTOR VEHICLE FATALITY TYPE BY COUNTY OF INJURY**Pinellas County**

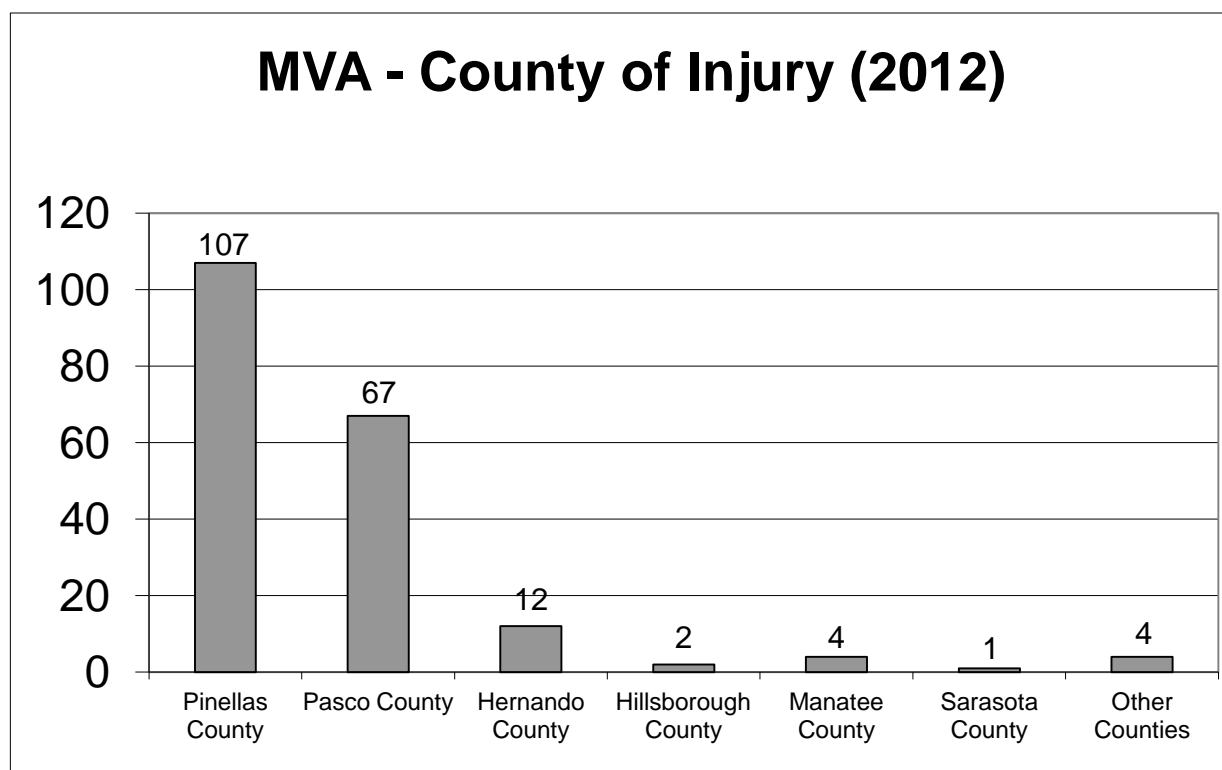
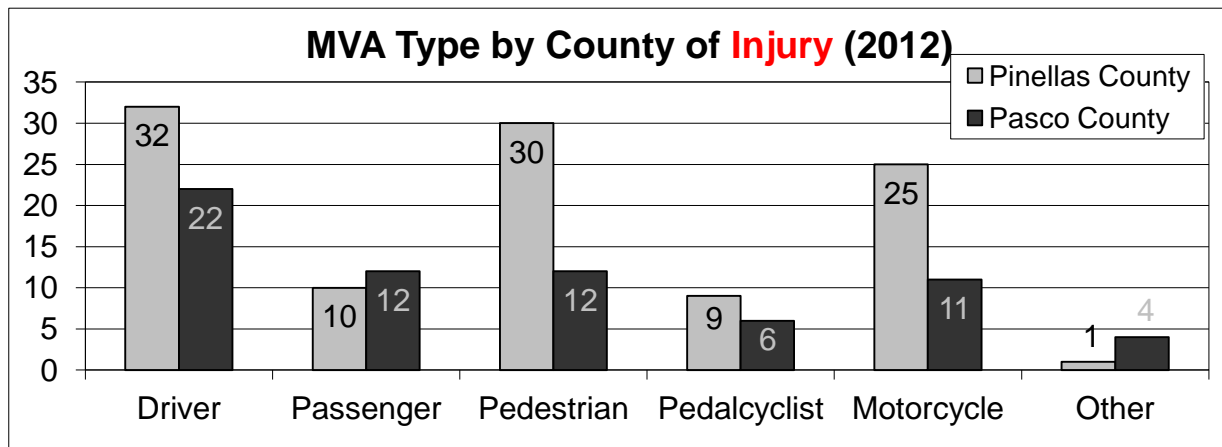
LOCATION	Driver	Passenger	Pedestrian	Pedalcyclist	Motorcycle	Other	Total
US 19	2	1	5	2	1	0	11
ALT 19	1	0	5	1	4	0	11
I-275	4	2	0	0	3	0	9
49th St. SP	2	1	1	0	0	0	4
McM-Booth	2	1	0	0	0	0	3
Gulf Blvd	0	0	1	0	0	0	1
Belcher	1	0	0	0	6	0	7
Starkey/Keene	1	0	1	1	0	0	3
Ulmerton	1	1	0	1	0	0	3
SR 60 G-B	0	1	0	0	2	0	3
Pk./Gandy Blv	4	0	4	0	1	0	9
All Others	14	3	13	4	8	1	43
Total	32	10	30	9	25	1	107

Pasco County

LOCATION	Driver	Passenger	Pedestrian	Pedalcyclist	Motorcycle	Other	Total
US 19	3	2	3	1	1	0	10
I-75	4	1	0	0	0	0	5
Suncoast	0	0	0	0	0	0	0
US 301	1	0	0	0	0	0	1
US 41	5	0	1	0	0	3	9
SR 52	2	0	0	0	0	0	2
SR 54	1	4	0	1	1	0	7
Little Road	1	2	1	0	1	0	5
All Others	5	3	7	4	8	1	28
Total	22	12	12	6	11	4	67

Out of District Location

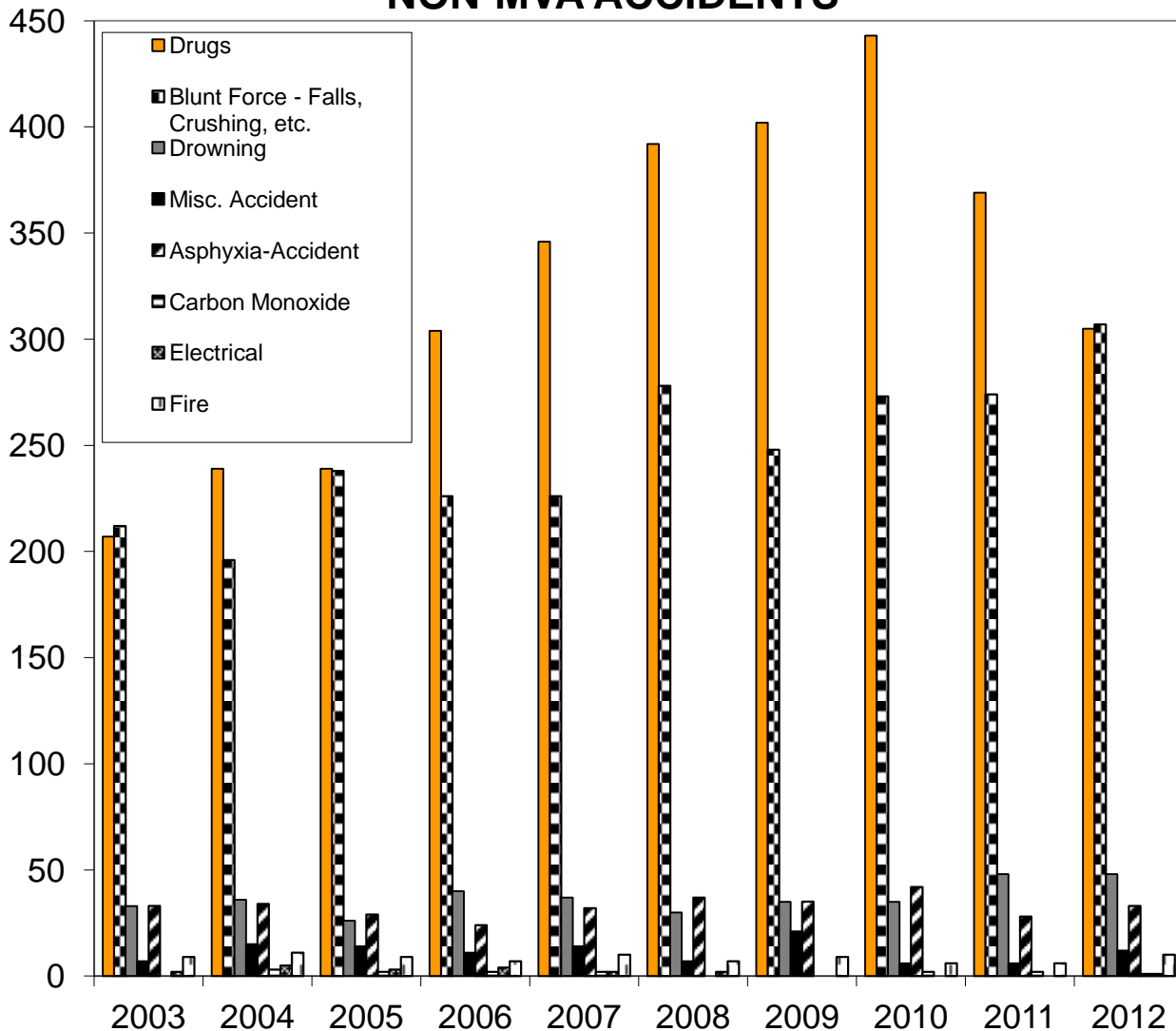
	Total
Hernando County	12
Hillsborough County	2
Manatee County	4
Sarasota County	1
Other Counties	4
Total	23



NON MOTOR VEHICLE RELATED ACCIDENTS

	2003	2004	2005	2006	2007	2008	2009	2010	2011	2012
Drugs	207	239	239	304	346	392	402	443	369	305
Blunt Force - Falls, Crushing, etc.	212	196	238	226	226	278	248	273	274	307
Drowning	33	36	26	40	37	30	35	35	48	48
Misc. Accident	7	15	14	11	14	7	21	6	6	12
Asphyxia-Accident	33	34	29	24	32	37	35	42	28	33
Carbon Monoxide	0	3	2	2	2	0	0	2	2	1
Electrical	2	5	3	4	2	2	0	0	0	1
Fire	9	11	9	7	10	7	9	6	6	10
Total	503	539	560	618	669	753	750	807	733	717

NON-MVA ACCIDENTS



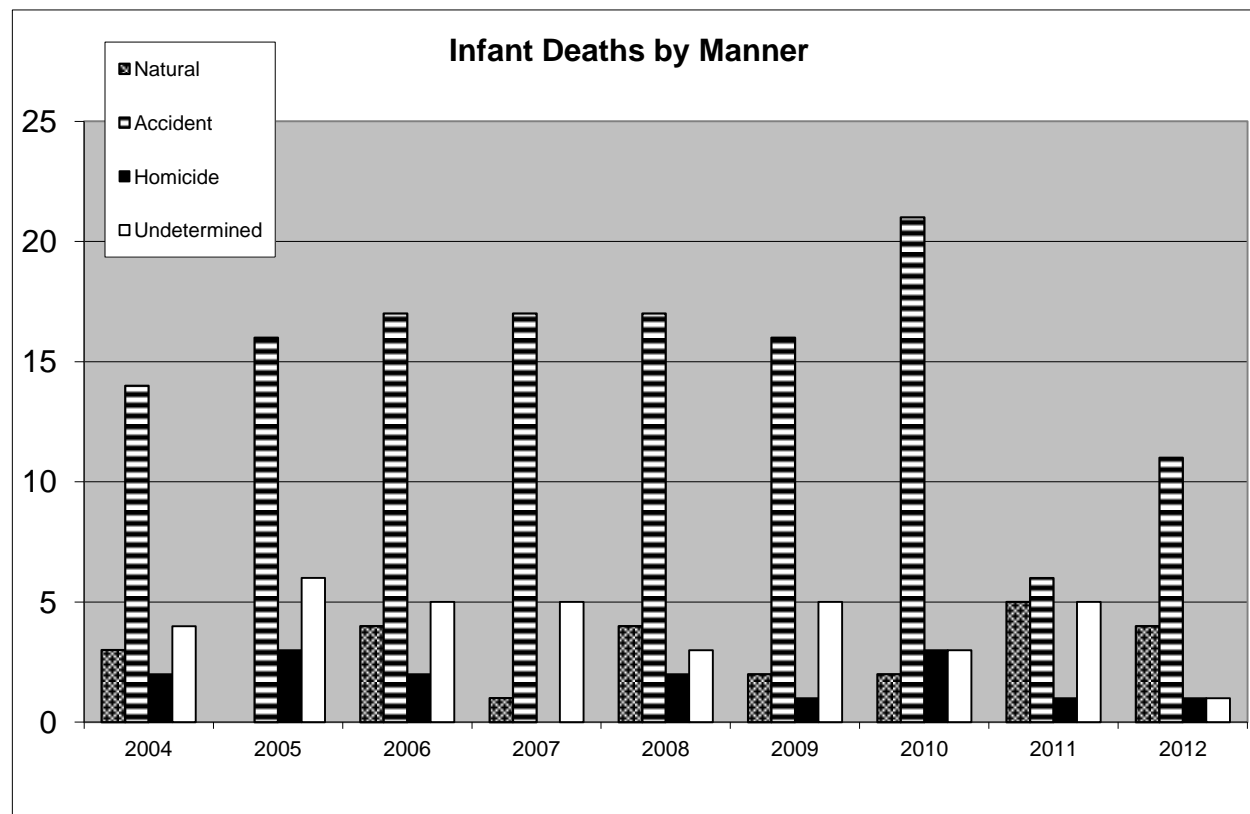
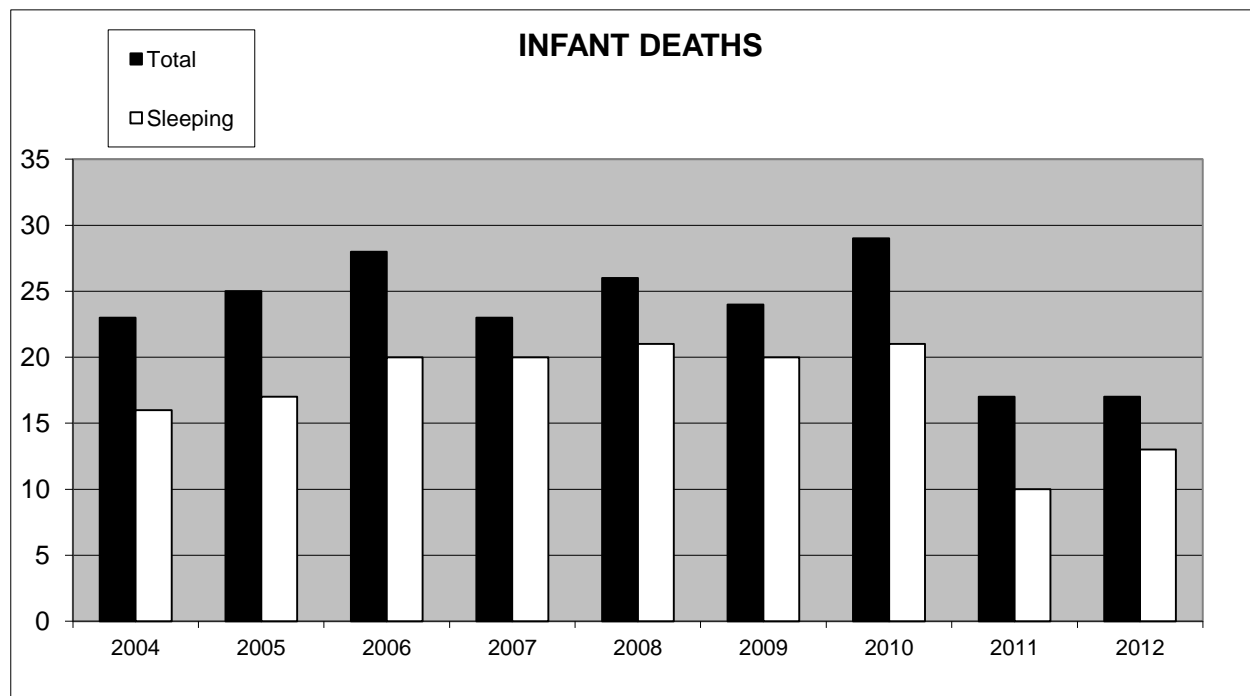
INFANT DEATHS

	2004	2005	2006	2007	2008	2009	2010	2011	2012
Total	23	25	28	23	26	24	29	17	17
Sleeping	16	17	20	20	21	20	21	10	13
% Sleeping	69.6%	68.0%	71.4%	87.0%	80.8%	83.3%	72.4%	58.8%	76.5%
Co-sleeping	3	11	9	13	13	10	14	5	6
Sleeping Alone Total	9	5	8	7	8	10	7	5	7
Alone on Stomach	7	3	6	4	6	7	4	3	4
Alone on Back	0	0	0	2	1	1	2	2	2
Alone Unknown	2	1	1	1	1	2	1	0	1
unknown/unclear		1	1	0	0	0	0	0	0
	2004	2005	2006	2007	2008	2009	2010	2011	2012
Natural	3	0	4	1	4	2	2	5	4
Accident	14	16	17	17	17	16	21	6	11
Homicide	2	3	2	0	2	1	3	1	1
Undetermined	4	6	5	5	3	5	3	5	1
Total	23	25	28	23	26	24	29	17	17

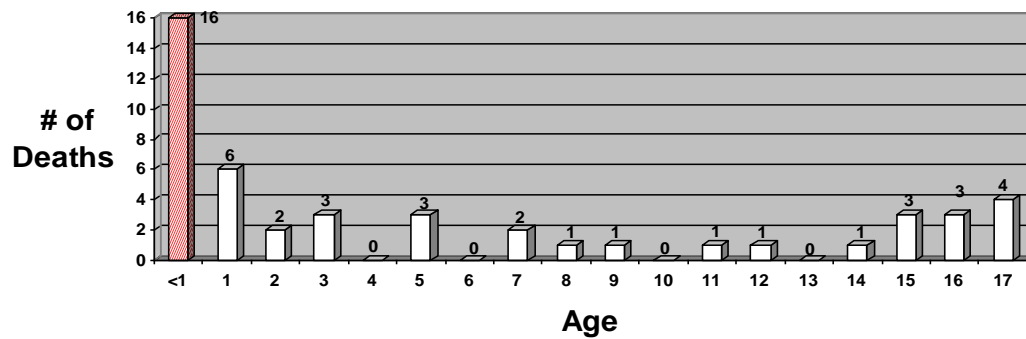
Of the 13 sleep associated infant deaths, only 1 of the infants died while reportedly sleeping in safe circumstances (alone on their back, and on a device designed for infant sleeping), and that infant died from bronchopneumonia. 6 of the infants died while sleeping with others (Co-Sleeping), and 4 died while put to sleep face down...1 face down on a folded comforter, and 1 found with their head wedged between a pillow & stuffed toys.

	2003	2004	2005	2006	2007	2008	2009	2010	2011	2012
SIDS *	0	0	0	0	0	0	0	0	0	0
Natural disease or illness	4	3	0	4	1	4	2	2	5	4
Asphyxia - Accident	8	12	12	14	14	17	15	17	5	10
Blunt force - Accident	1	0	1	0	1	0	1	1	0	0
Other Accident	3	2	3	3	2	0	0	3	1	1
Blunt force - Homicide	1	1	2	0	0	2	1	3	1	1
Undetermined	2	4	6	5	5	3	5	3	5	1
Other Homicide	1	1	1	2	0	0	0	0	0	0

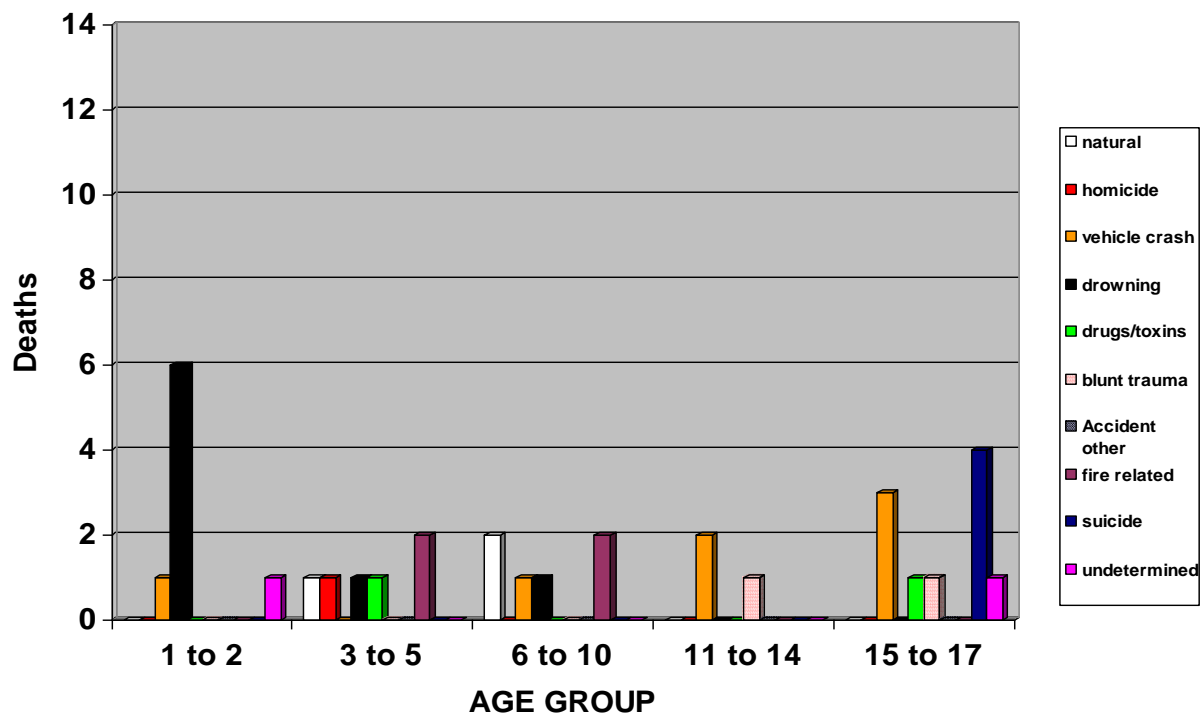
*** Sudden Infant Death Syndrome (SIDS):** the death of an infant less than one year of age which remains unexplained after thorough case investigation, including performance of a complete autopsy, examination of the death scene, and review of the clinical history. Thus, SIDS is a diagnosis by exclusion. (Willinger et al, 1991).

INFANT DEATHS CONT..

INFANT/CHILD DEATHS BY AGE (2012)



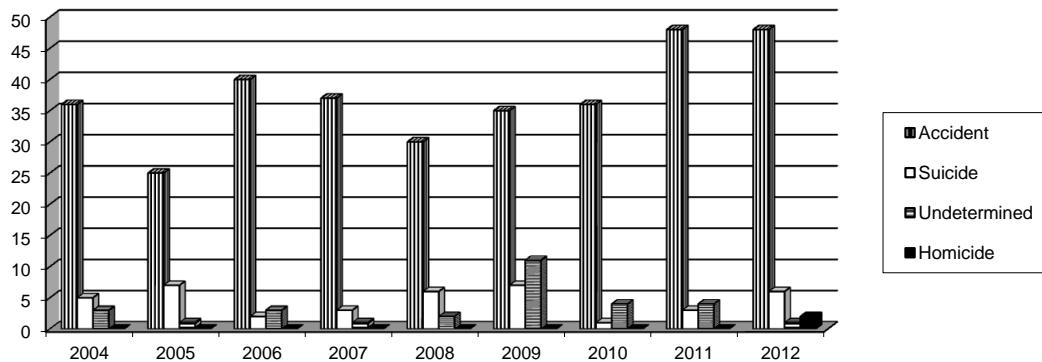
CHILD DEATHS BY TYPE (2012)



DROWNINGS BY MANNER OF DEATH

	2004	2005	2006	2007	2008	2009	2010	2011	2012
Accident	36	25	40	37	30	35	36	48	48
Suicide	5	7	2	3	6	7	1	3	6
Undetermined	3	1	3	1	2	11	4	4	1
Homicide	0	0	0	0	0	0	0	0	2

DROWNINGS BY MANNER



DROWNING BY AGE GROUP

	2004	2005	2006	2007	2008	2009	2010	2011	2012
0-10	5	5	6	6	3	8	10	8	12
11-30	5	5	1	6	5	7	3	3	3
31-50	20	9	19	10	12	15	11	15	12
51-70	9	8	11	13	9	16	10	15	17
71+	5	7	8	6	9	7	7	14	13

DROWNING AGE 0-5 YEARS

Pool	4	5	5	4	3	6	9	7	7
Bathtub	0	0	1	0	0	2	1	0	1
Other	0	0	0	0	0	0	0	1	1

ACCIDENTAL DROWNING BY LOCATION

Swimming Pool	12	8	10	16	6	18	17	22	16
Gulf waters	7	8	5	6	13	13	10	15	14
Lake/Pond	4	5	5	5	8	9	4	3	3
Tampa Bay waters	5	1	7	5	1	2	0	2	2
Bathtub	2	2	6	2	2	6	4	2	3
Spa	1	1	4	1	0	2	1	0	0
Canal	1	0	3	1	0	1	0	1	3
River	0	0	0	0	0	1	0	2	0
Other Misc.	3	0	0	1	0	1	0	1	7
Total	35	25	40	37	30	53	36	48	48

TOXICOLOGY

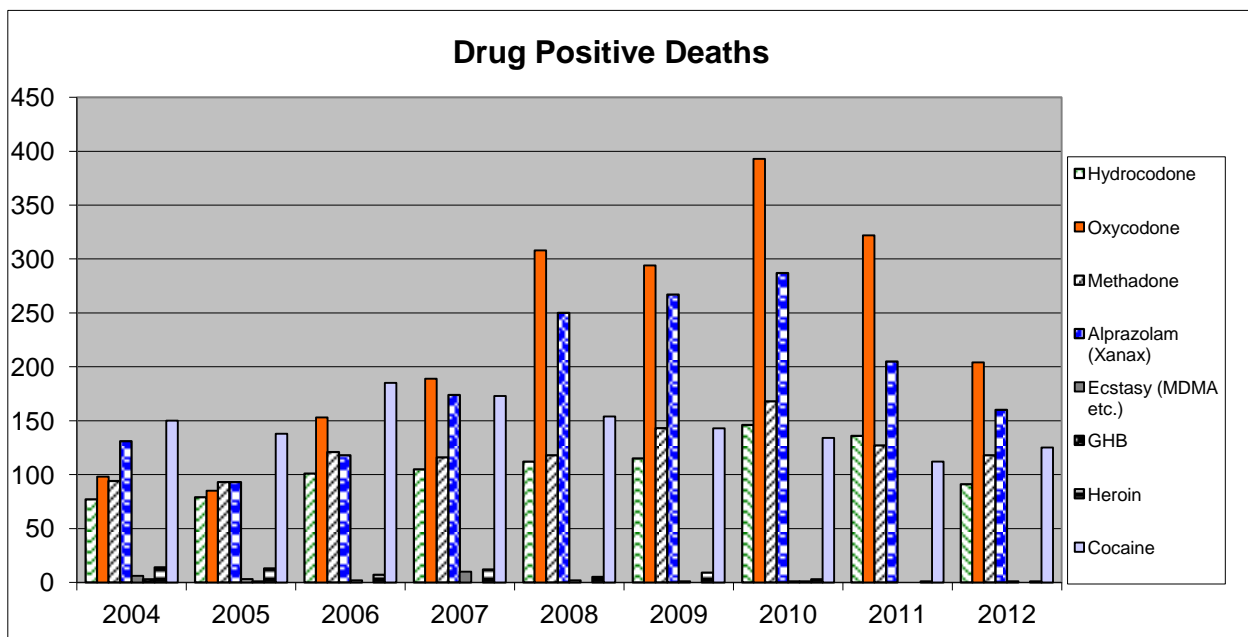
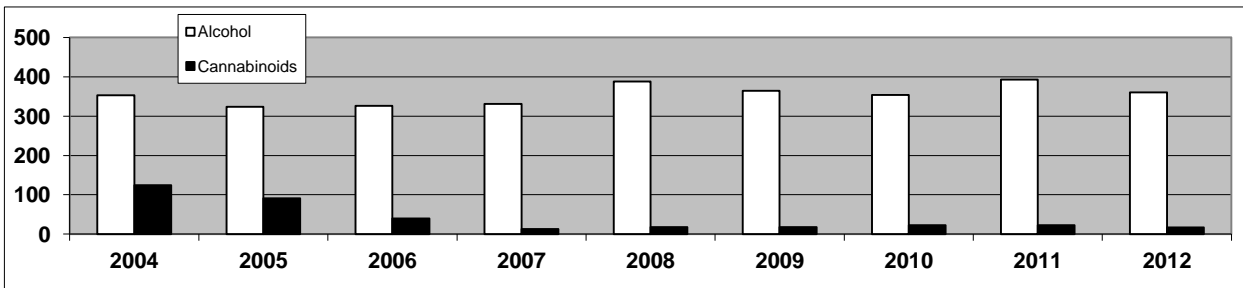
MEDICAL EXAMINER CASES WHERE TOXICOLOGY WAS PERFORMED

	2005	2006	2007	2008	2009	2010	2011	2012
Cases submitted to Toxicology	1286	1401	1361	1460	1492	1576	1492	1392
Cases where Toxicology was performed	998	1144	1066	1119	1174	1218	1142	1047

MEDICAL EXAMINER CASES TESTING POSITIVE FOR DRUGS

	2004	2005	2006	2007	2008	2009	2010	2011	2012
Alcohol	353	324	326	331	388	364	354	393	360
Cannabinoids	124	91	40	13	18	18	23	23	17

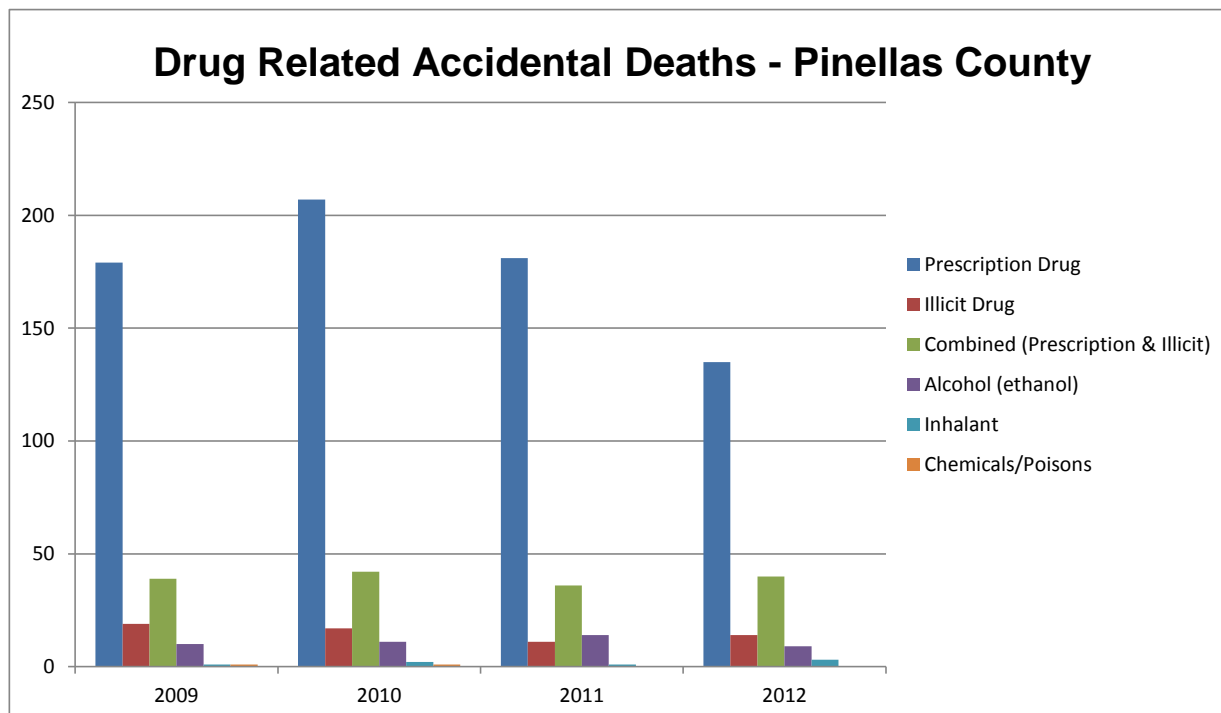
	2004	2005	2006	2007	2008	2009	2010	2011	2012
Hydrocodone	77	79	101	105	112	115	146	136	91
Oxycodone	98	85	153	189	308	294	393	322	204
Methadone	94	93	121	116	118	143	168	127	118
Alprazolam (Xanax)	131	93	118	174	250	267	287	205	160
Ecstasy (MDMA etc.)	6	3	2	10	2	1	1	0	1
GHB	3	1	0	0	0	0	1	0	0
Heroin	14	13	7	12	5	9	3	1	1
Cocaine	150	138	185	173	154	143	134	112	125

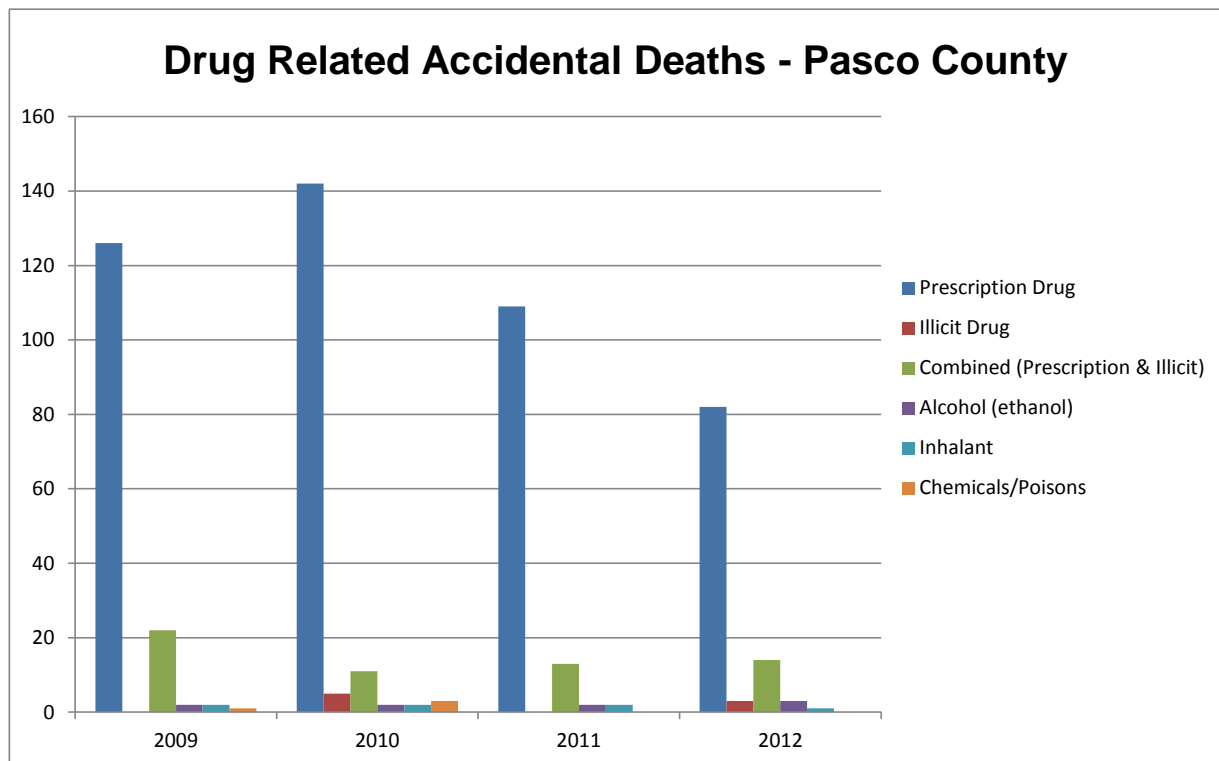


Toxicology Continued....**DRUGS or TOXIN RELATED CAUSE OF DEATH (Accidental Manner)**

<u>Pinellas</u>	<u>2009</u>	<u>2010</u>	<u>2011</u>	<u>2012</u>
Prescription Drug	179	207	181	135
Illicit Drug	19	17	11	14
Combined (Prescription & Illicit)	39	42	36	40
Alcohol (ethanol)	10	11	14	9
Inhalant	1	2	1	3
Chemicals/Poisons	1	1	0	0
Total Drug Related	249	280	243	201

<u>Pasco</u>	<u>2009</u>	<u>2010</u>	<u>2011</u>	<u>2012</u>
Prescription Drug	126	142	109	82
Illicit Drug	0	5	0	3
Combined (Prescription & Illicit)	22	11	13	14
Alcohol (ethanol)	2	2	2	3
Inhalant	2	2	2	1
Chemicals/Poisons	1	3	0	0
Total Drug Related	153	165	126	103



Toxicology Continued....

UNIDENTIFIED PERSONS										
----------------------	--	--	--	--	--	--	--	--	--	--

	2003	2004	2005	2006	2007	2008	2009	2010	2011	2012
Pinellas	0	0	1	0	0	1	0	1	0	0
Pasco	0	0	0	0	0	0	1	1	0	0
Total	0	0	1	0	0	1	1	2	0	0

ID'd 05/10 ID'd 10/11
ID'd 08/11

2005**#5050078**

Date Found: 1/12/2005
 Location Found: 44000 Block of U.S. 19 North, Tarpon Springs - Skeletal remains found in wooded area
 Race: White (estimated)
 Gender: Male (estimated)
 Age: 40 - 55 (estimated)
 Height: 5' 8" - 6' 3" (estimated)
 Weight: Unknown
 Hair Color: Unknown
 Eye Color: Unknown
 Law Enforcement Agency: Tarpon Springs Police Department
 Agency Case #: 05-142
 NamUs #: UP 116 <https://identifyus.org/cases/116>



<https://identifyus.org/cases/116>

Unidentified Persons cont.....**2009****#5091701**

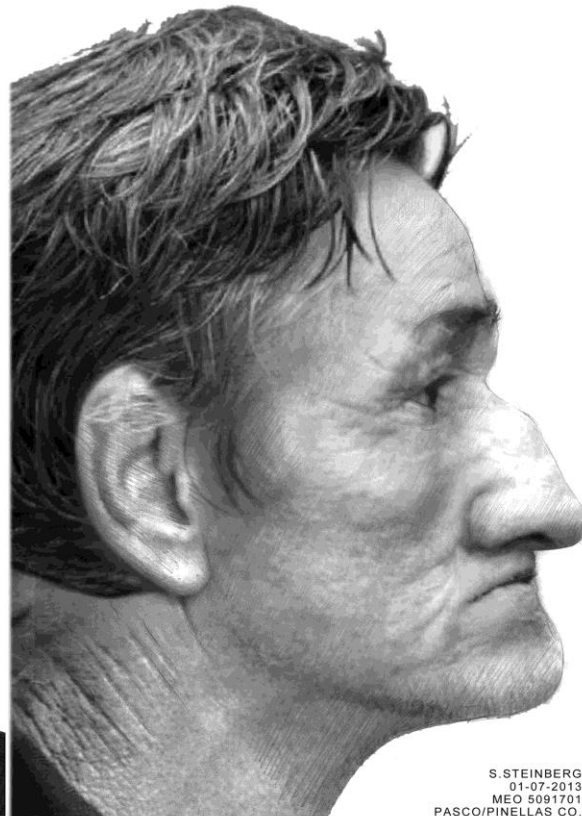
Date Found: 11/20/2009
Location Found: 11721 U.S. Hwy 19, Port Richey, FL 34668 (Pasco County, Wooded area)
Race: White
Gender: Male
Age: 39 - 65
Height: 5' 11"
Weight: unk.
Hair Color: unk.
Eye Color: unk.
Law Enforcement Agency: Pasco County Sheriff's Office
Agency Case #: 09-68244
Other Information: Unidentified white male was found in a wooded area near the USA Flea Market in Port Richey, FL. Decedent was decomposing and partially burned. Transients are known to frequent the area. Believed to have died within 1 month or less of being found.
Clothing: Dark colored Joe Boxer underwear/pants/shorts size Large. Light colored shirt
NamUs #: UP 6598 <https://identifyus.org/cases/6598>
NCIC Unidentified #: U100023034

<https://identifyus.org/cases/6598>

Unidentified Persons cont.....

2009 (Continued...)
#5091701

<https://identifyus.org/cases/6598>



INDIGENT / UNCLAIMED

Medical Examiner Cases Released as Indigent/Unclaimed *

	2005	2006	2007	2008	2009	2009	2010	2011	2012
Pinellas	28	39	39	44	45	45	58	146	125
Pasco	4	11	17	24	20	20	12	45	52
Total:	32	50	56	68	65	65	70	191	177

* Only reflects Medical Examiner cases, not all District deaths. May have later been determined to not be indigent or unclaimed.

Organ & Tissue Donation

	2007	2008	2009	2010	2011	2012
Organ Donations	29	28	37	25	41	22
Tissue Donations	55	48	51	28	38	19
Corneal Donations	90	96	143	104	107	135

* Only reflects the number of organ and/or tissue donations for Medical Examiner cases, not all District deaths.

Exhumations

	2006	2007	2008	2009	2010	2011	2012
Pinellas	0	0	0	0	4	0	0
Pasco	0	0	0	0	2	0	0
Total	0	0	0	0	6	0	0