

MEDICAL EXAMINER
District Six

Pasco & Pinellas Counties



10900 Ulmerton Road
Largo, FL 33778
727-582-6800
(Fax 727-582-6820)

www.co.pinellas.fl.us/forensics

YEAR 2011

MEDICAL EXAMINER

ANNUAL REPORT

TABLE OF CONTENTS

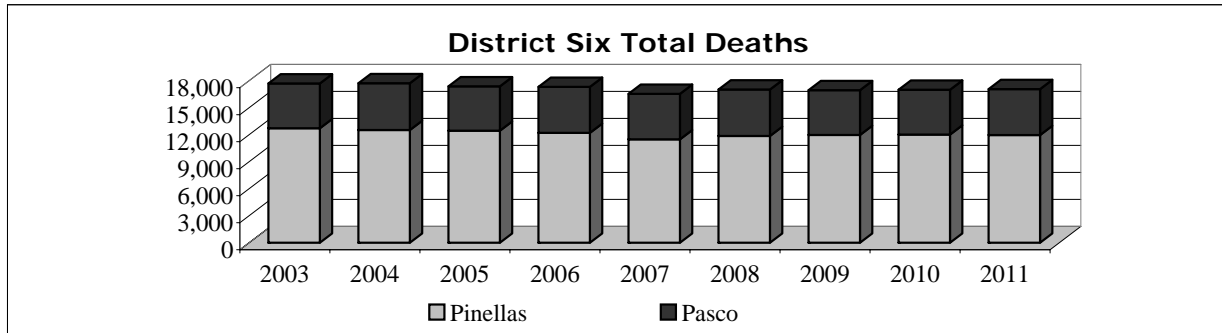
Section:	Page #:
Population, District Deaths, Cases Accepted	1
Workload by Type of Examination	2
Scenes Investigated, Persons Transported	3
Deaths By Manner of Death	4
Homicide Investigations	5
Suicide Investigations	6
Accidental Deaths, Motor Vehicle Deaths	7 - 9
Accidental Deaths, Non-Motor Vehicle Related	10
Infant Deaths	11 - 12
Infant & Child Deaths (age 1-17)	13
Drowning Deaths	14
Toxicology - Drug Positive & Drug Cause of Death	15 - 16
Unidentified Persons	17 - 18
Indigent / Unclaimed Persons	19
Organ & Tissue Donation	19

	2003	2004	2005	2006	2007	2008	2009	2010	2011
Population *									
Pinellas	941,435	944,966	947,744	924,413	917,437	940,645	931,113	916,542	917,398
Pasco	378,085	392,507	406,857	450,171	462,715	441,188	438,668	464,697	466,457
Total	1,319,520	1,337,473	1,354,601	1,374,584	1,380,152	1,381,833	1,369,781	1,381,239	1,383,855

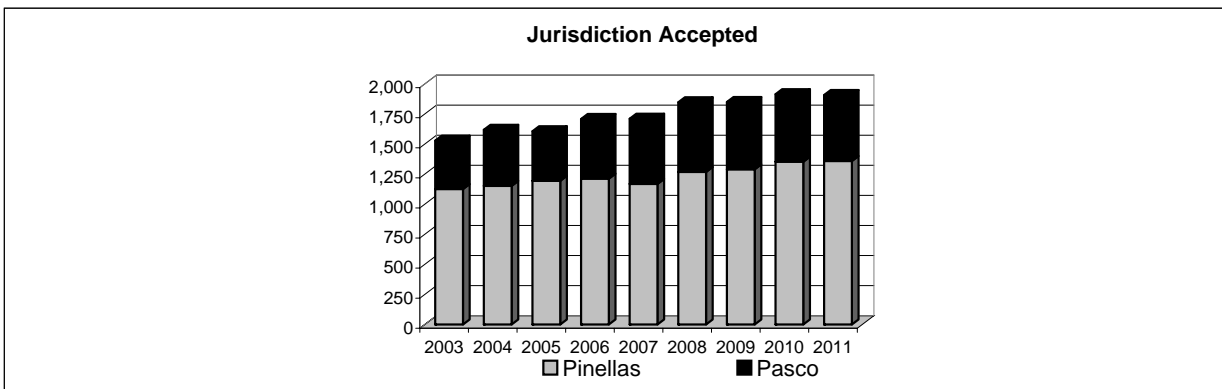
* SOURCE: U.S. Census Bureau, 2011 Census Estimates. (<http://www.census.gov/popest/data/counties/totals/2011>)

	2003	2004	2005	2006	2007	2008	2009	2010	2011
District Deaths *									
Pinellas	12,718	12,518	12,447	12,207	11,484	11,859	11,968	12,012	11,961
Pasco	4,975	5,201	4,926	5,108	5,053	5,161	4,978	4,981	5,104
Total	17,693	17,719	17,373	17,315	16,537	17,020	16,946	16,993	17,065

* SOURCE: Office of Vital Statistics, Florida Department of Health

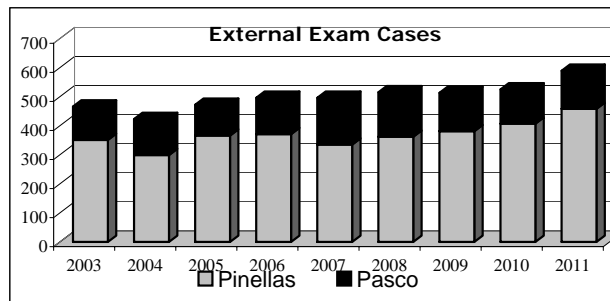
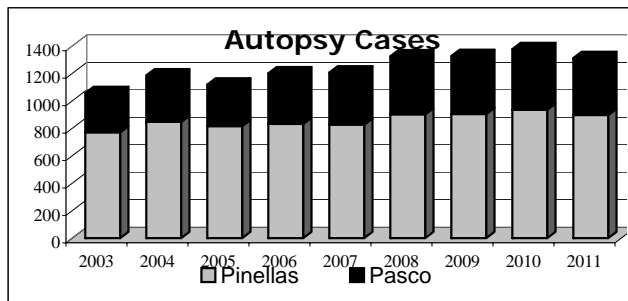


	2003	2004	2005	2006	2007	2008	2009	2010	2011
Cases Accepted									
Pinellas	1,126	1,152	1,194	1,212	1,168	1,268	1,290	1,353	1,359
Pasco	402	466	412	496	542	579	559	561	548
Total	1,528	1,618	1,606	1,708	1,710	1,847	1,849	1,914	1,907

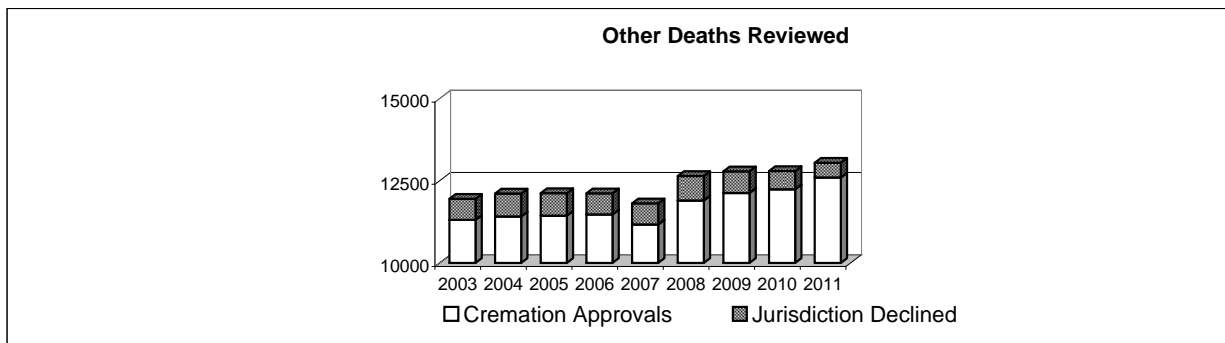


WORKLOAD BY TYPE OF EXAMINATION:

	2003	2004	2005	2006	2007	2008	2009	2010	2011
Autopsies									
Pinellas	771	847	816	832	827	902	904	935	897
(Partial Autopsies)	4	6	12	9	6	4	5	11	4
Pasco	286	339	303	369	380	423	423	442	415
(Partial Autopsies)	1	3	3	2	1	3	4	1	2
Total	1,062	1,195	1,134	1,212	1,214	1,332	1,336	1,389	1,318
External Exams									
Pinellas	351	299	366	371	335	362	381	407	458
Pasco	115	124	106	125	161	153	132	118	131
Total	466	423	472	496	496	515	513	525	589

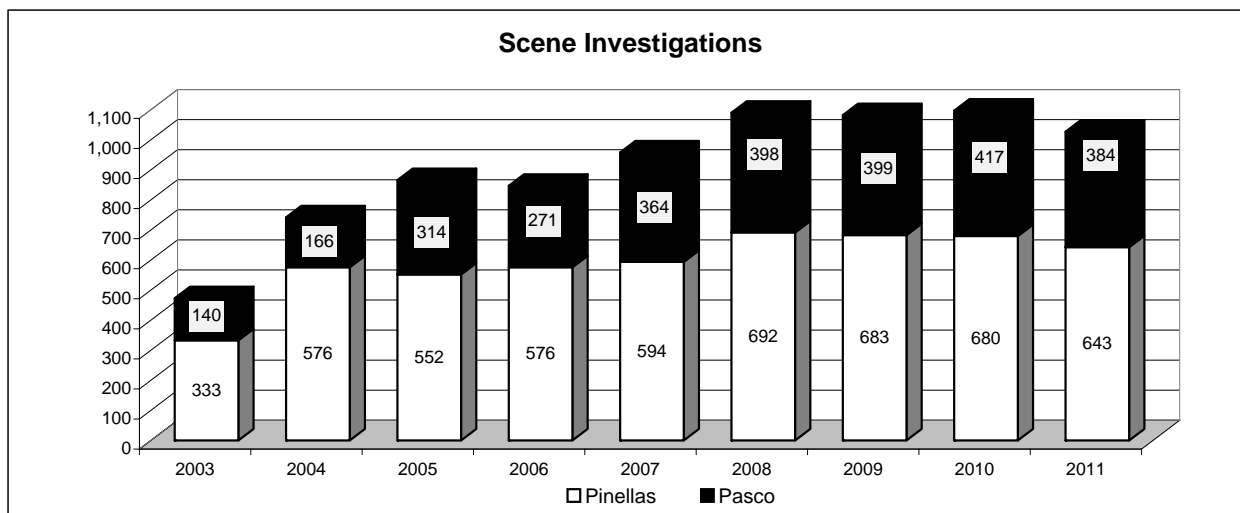


Cremation Approvals	2003	2004	2005	2006	2007	2008	2009	2010	2011
Pinellas	8,235	8,190	8,297	8,194	7,862	8,339	8,648	8,691	8,849
Pasco	3,074	3,224	3,140	3,282	3,309	3,560	3,479	3,549	3,750
Total	11,309	11,414	11,437	11,476	11,171	11,899	12,127	12,240	12,599
Jurisdiction Declined	2003	2004	2005	2006	2007	2008	2009	2010	2011
Pinellas	490	528	499	471	452	541	479	404	309
Pasco	151	169	187	169	188	204	178	151	139
Total	641	697	686	640	640	745	657	555	448



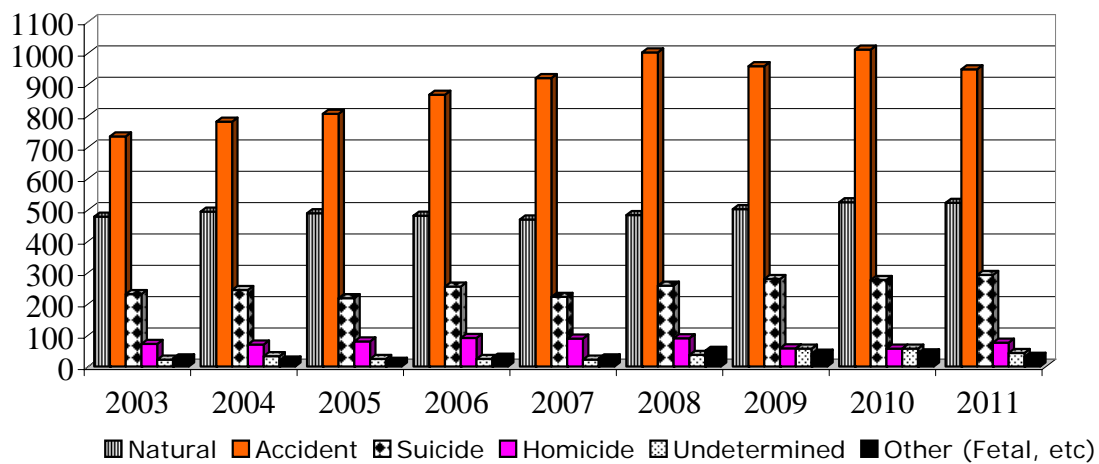
Decedent Transportation	2004	2005	2006	2007	2008	2009	2010	2011
<u>Pinellas</u>								
Medical Examiner Office	1143	1180	1202	1153	1258	1281	1340	1315
Life Link	5	11	10	14	12	8	6	9
Other	6	10	10	24	42	34	25	25
Total Pinellas	1154	1201	1222	1191	1312	1323	1371	1349
<u>Pasco</u>								
Medical Examiner Office	465	411	495	539	581	561	562	548
Life Link	0	1	2	1	0	1	0	0
Other	3	4	1	1	3	1	1	0
Total Pasco	468	416	498	541	584	563	563	548
District Total Transported	1,622	1,617	1,720	1,732	1,896	1,886	1,934	1,897

Scene Investigations	2003	2004	2005	2006	2007	2008	2009	2010	2011
Pinellas	333	576	552	576	594	692	683	680	643
Pasco	140	166	314	271	364	398	399	417	384
Total	473	742	866	847	958	1,090	1,082	1,097	1,027



District Deaths by Manner of Death	2003	2004	2005	2006	2007	2008	2009	2010	2011
Natural	478	494	489	481	469	483	502	524	522
Accident	734	781	806	867	920	1002	958	1011	948
Suicide	231	244	218	255	222	258	279	276	292
Homicide	72	70	80	91	89	90	58	57	76
Undetermined	22	33	24	24	22	37	57	57	43
Other (Fetal, etc)	26	19	15	28	26	50	41	42	31
Total	1,563	1,641	1,632	1,746	1,748	1,920	1,895	1,967	1,912

District Deaths by Manner of Death

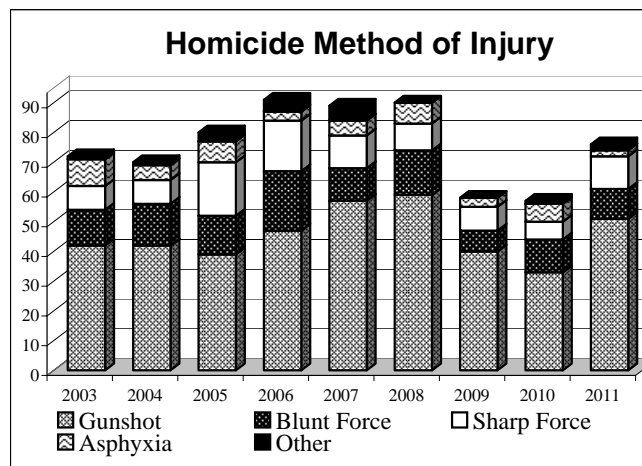
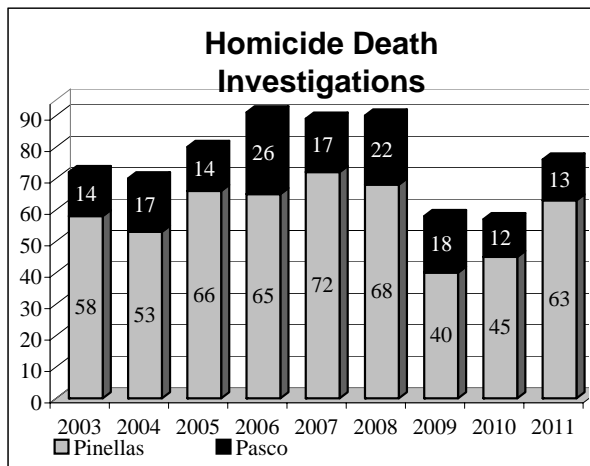


TOTAL VIOLENT DEATHS	2001	2002	2003	2004	2006	2007	2008	2009	2010	2011
	924	992	1,059	1,128	1,237	1,253	1,387	1,351	1,401	1,359

HOMICIDE DEATH INVESTIGATIONS

Homicides	2003	2004	2005	2006	2007	2008	2009	2010	2011
Pinellas	58	53	66	65	72	68	40	45	63
Pasco	14	17	14	26	17	22	18	12	13
Total	72	70	80	91	89	90	58	57	76

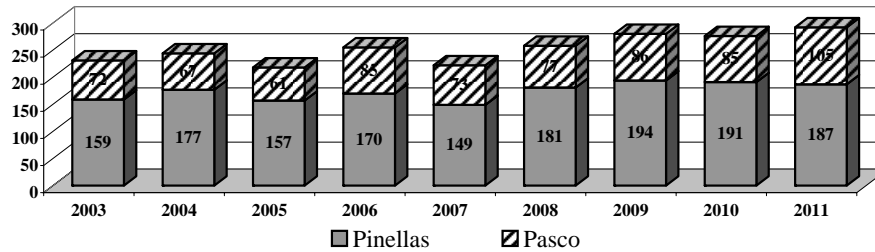
	2003	2004	2005	2006	2007	2008	2009	2010	2011
Gunshot	42	42	39	47	57	59	40	33	51
Blunt Force	12	14	13	20	11	15	7	11	10
Sharp Force	8	8	18	17	11	9	8	6	11
Asphyxia	9	5	7	3	5	7	3	6	2
Other	1	1	3	4	5	0	0	1	2



SUICIDE DEATH INVESTIGATIONS

	2003	2004	2005	2006	2007	2008	2009	2010	2011
Pinellas	159	177	157	170	149	181	194	191	187
Pasco	72	67	61	85	73	77	86	85	105
Total	231	244	218	255	222	258	280	277	292

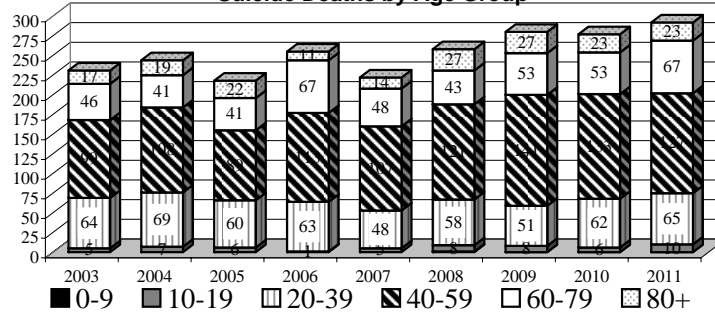
Suicide Death Investigations



SUICIDE GENDER	2003	2004	2005	2006	2007	2008	2009	2010	2011
Male	174	173	172	188	165	194	221	216	223
Female	57	71	46	67	57	64	59	60	69

Age Group	2003	2004	2005	2006	2007	2008	2009	2010	2011
0-9						1	0	0	0
10-19	5	7	6	1	5	8	8	6	10
20-39	64	69	60	63	48	58	51	62	65
40-59	99	108	89	113	107	121	141	133	127
60-79	46	41	41	67	48	43	53	53	67
80+	17	19	22	11	14	27	27	23	23
Total	231	244	218	255	222	258	280	277	292

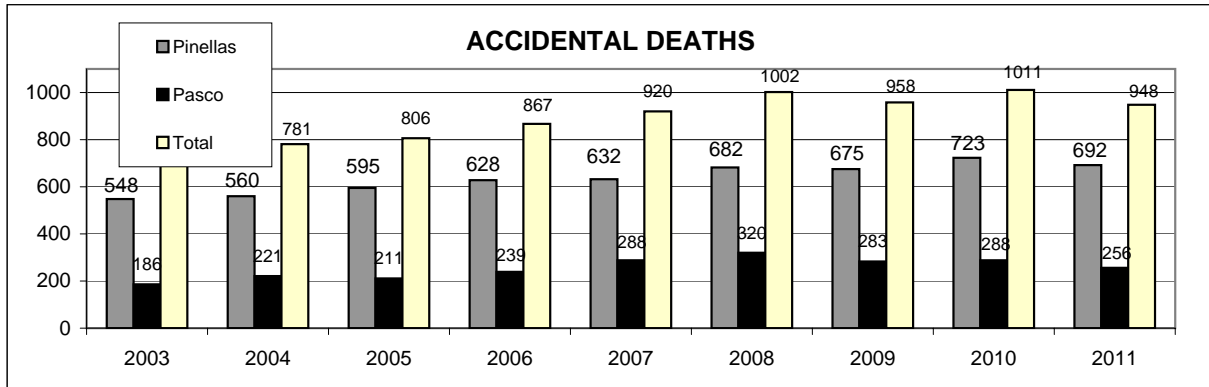
Suicide Deaths by Age Group



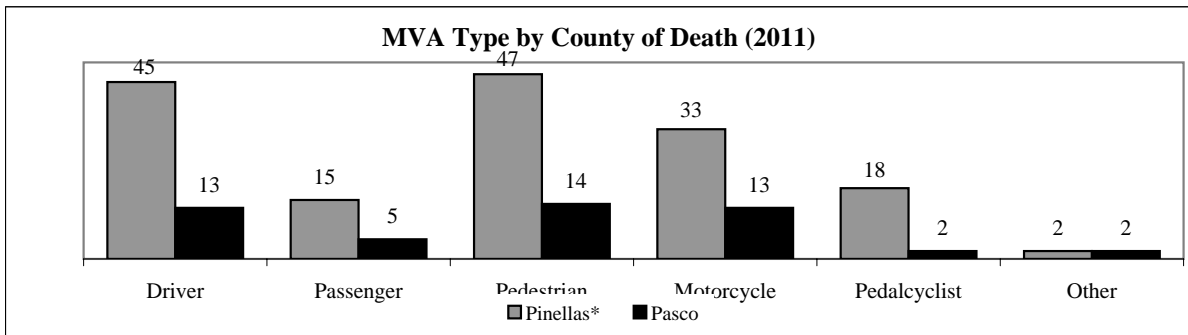
ACCIDENTAL DEATH INVESTIGATIONS

TOTAL ACCIDENTAL DEATHS (Motor Vehicle Accident (MVA) & Non-Motor Vehicle Accident)

	2003	2004	2005	2006	2007	2008	2009	2010	2011
Pinellas	548	560	595	628	632	682	675	723	692
Pasco	186	221	211	239	288	320	283	288	256
Total	734	781	806	867	920	1002	958	1011	948



MOTOR VEHICLE DEATHS



Traffic Fatalities by County of Death for Year 2011

*** Includes victims that sustained injuries in counties other than Pinellas, but were taken to Pinellas hospitals and eventually died in Pinellas from injuries sustained in the other county.**

	Pinellas*	Pasco	District
Driver	45	13	58
Passenger	15	5	20
Pedestrian	47	14	61
Motorcycle	33	13	46
Pedalcyclist	18	2	20
Other	2	2	4
Totals:	160	49	209

	2003	2004	2005	2006	2007	2008	2009	2010	2011
Driver	84	76	86	85	90	88	74	79	58
Passenger	33	29	44	38	46	30	25	28	20
Pedestrian	57	72	63	53	42	56	50	41	61
Motorcycle	37	36	32	42	57	55	37	41	46
Pedalcyclist	16	23	18	13	12	16	15	9	20
Other	9	6	3	18	4	4	7	6	4
Total	236	242	246	249	251	249	208	204	209

MOTOR VEHICLE DEATHS CONT..

DRIVERS	2003	2004	2005	2006	2007	2008	2009	2010	2011
Less than 20 Years of Age	8	3	5	5	10	6	4	1	3
20-29	16	15	12	16	17	18	15	12	11
30-39	14	6	6	9	6	16	6	9	4
40-49	11	13	10	16	11	14	7	13	5
50-59	10	8	13	9	18	7	11	10	11
60-69	10	4	9	7	7	5	8	11	5
70-79	5	8	14	11	6	14	11	9	10
80-89	8	18	17	10	12	7	10	10	6
90+	2	1	0	2	3	1	2	4	3
Totals	84	76	86	85	90	88	74	79	58

MOTOR VEHICLE FATALITY TYPE BY COUNTY OF INJURY**Pinellas County**

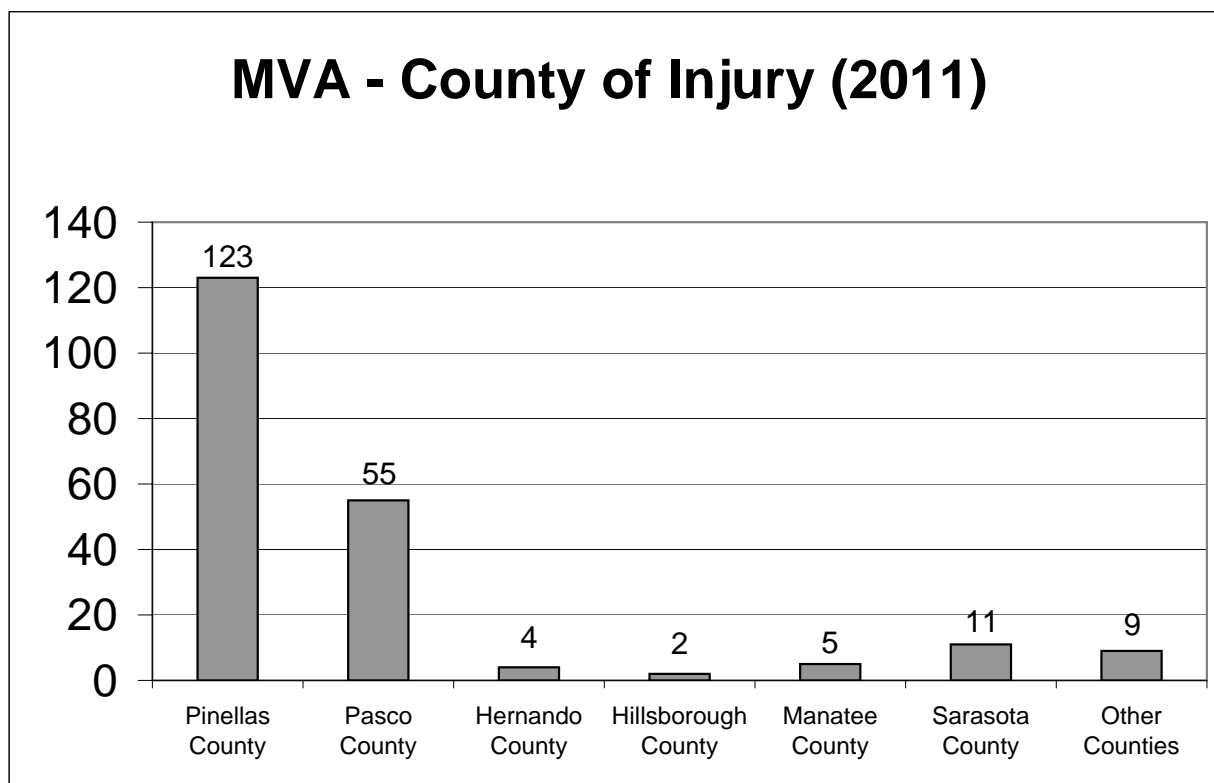
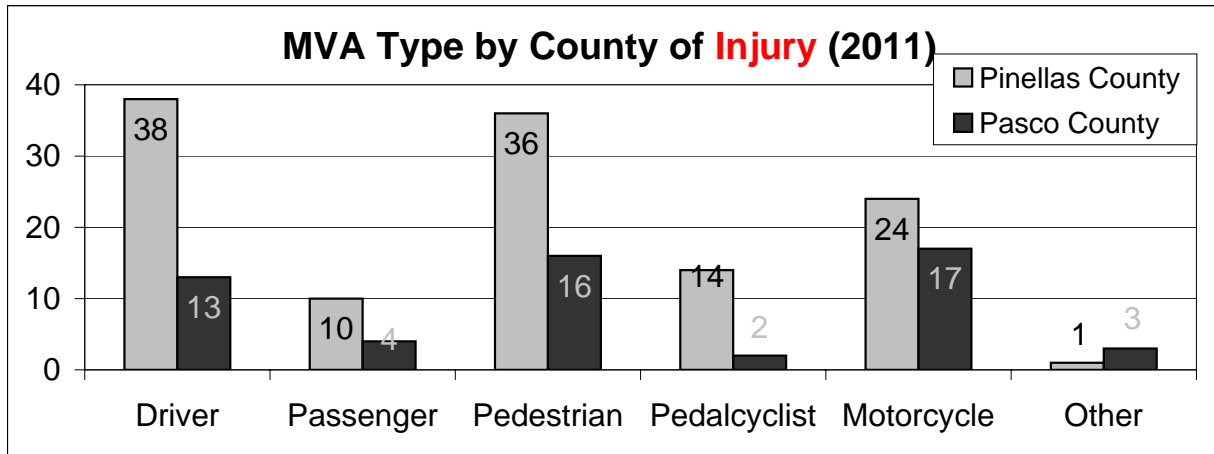
LOCATION	Driver	Passenger	Pedestrian	Pedalcyclist	Motorcycle	Other	Total
US 19	2	1	6	1	3	0	13
ALT 19	2	0	3	3	2	0	10
I-275	2	0	0	0	0	0	2
49th St. SP	2	0	0	1	2	0	5
McM-Booth	1	0	1	0	1	0	3
Gulf Blvd	1	1	2	0	0	0	4
Belcher	3	0	0	0	1	0	4
Starkey/Keene	0	0	3	1	0	0	4
Ulmerton	0	0	1	0	1	0	2
SR 60 G-B	1	0	0	0	0	0	1
Pk./Gandy Bl	0	0	0	1	1	0	2
All Others	24	8	20	7	13	1	73
Total	38	10	36	14	24	1	123

Pasco County

LOCATION	Driver	Passenger	Pedestrian	Pedalcyclist	Motorcycle	Other	Total
US 19	2	2	6	0	3	1	14
I-75	0	0	0	0	0	0	0
Suncoast	0	0	0	0	0	0	0
US 301	0	0	1	0	0	0	1
US 41	0	0	1	1	0	0	2
SR 52	1	0	0	0	0	0	1
SR 54	3	0	1	0	1	0	5
Little Road	1	2	2	0	1	0	6
All Others	6	0	5	1	12	2	26
Total	13	4	16	2	17	3	55

Out of District Location

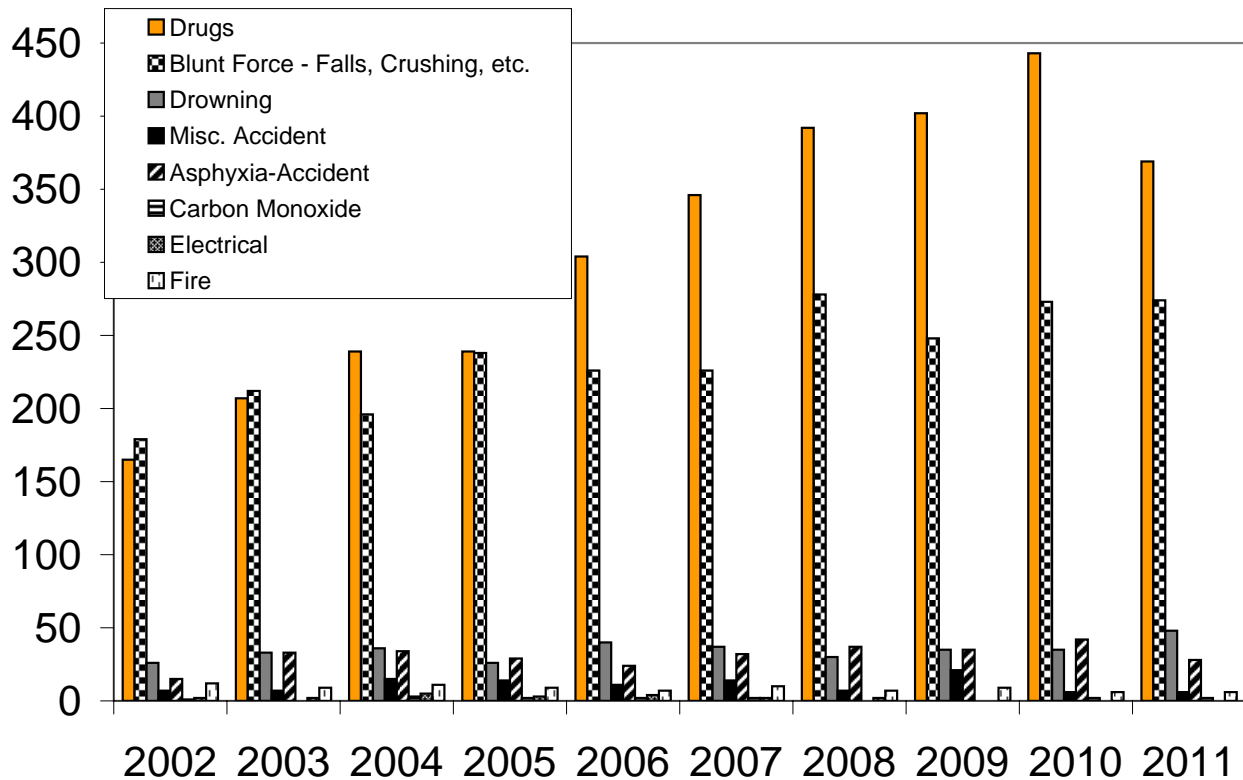
	Total
Hernando County	4
Hillsborough County	2
Manatee County	5
Sarasota County	11
Other Counties	9
Total	31



NON MOTOR VEHICLE RELATED ACCIDENTS

	2002	2003	2004	2005	2006	2007	2008	2009	2010	2011
Drugs	165	207	239	239	304	346	392	402	443	369
Blunt Force - Falls, Crushing, etc.	179	212	196	238	226	226	278	248	273	274
Drowning	26	33	36	26	40	37	30	35	35	48
Misc. Accident	7	7	15	14	11	14	7	21	6	6
Asphyxia-Accident	15	33	34	29	24	32	37	35	42	28
Carbon Monoxide	1	0	3	2	2	2	0	0	2	2
Electrical	2	2	5	3	4	2	2	0	0	0
Fire	12	9	11	9	7	10	7	9	6	6
Total	363	503	539	560	618	669	753	750	807	733

NON-MVA ACCIDENTS



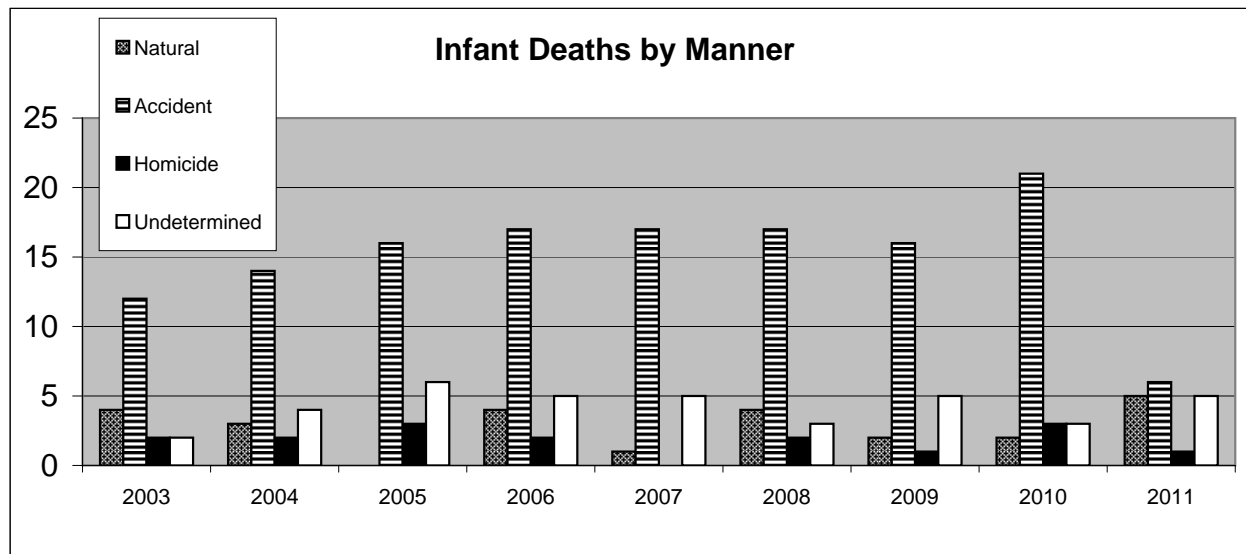
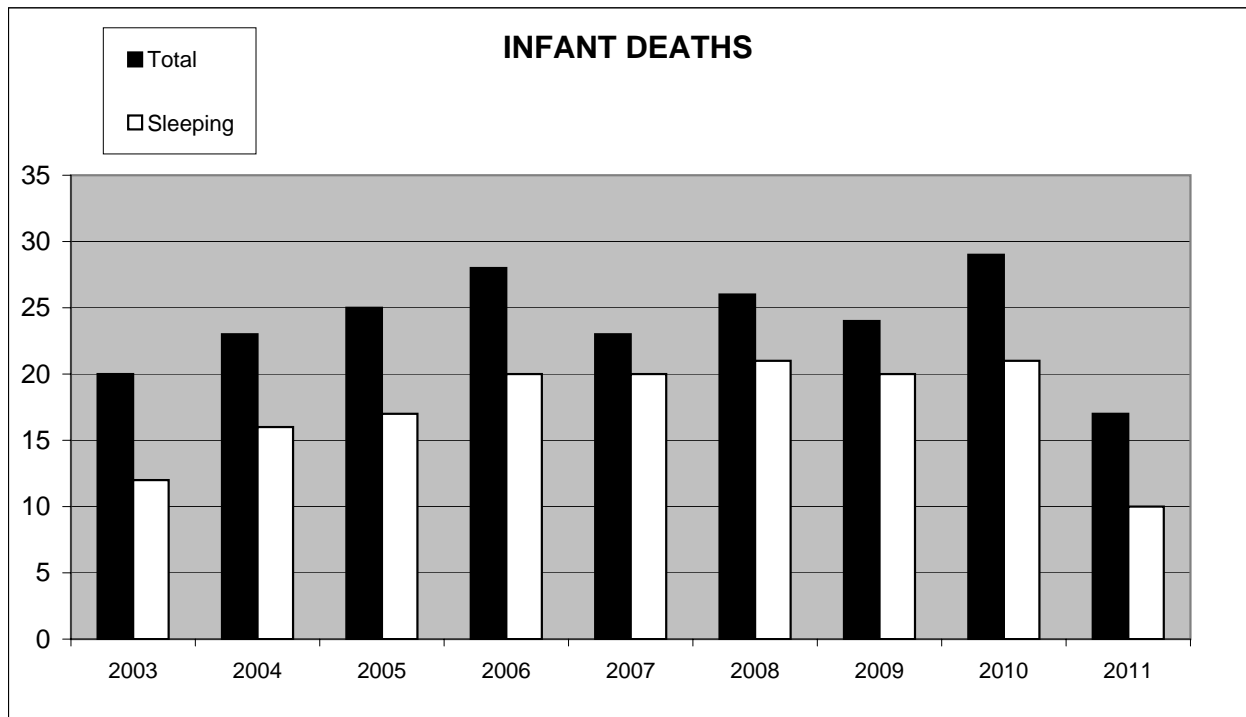
INFANT DEATHS

	2003	2004	2005	2006	2007	2008	2009	2010	2011
Total	20	23	25	28	23	26	24	29	17
Sleeping	12	16	17	20	20	21	20	21	10
% Sleeping	60.0%	69.6%	68.0%	71.4%	87.0%	80.8%	83.3%	72.4%	58.8%
Co-sleeping	5	3	11	9	13	13	10	14	5
Sleeping Alone Total	8	9	5	8	7	8	10	7	5
Alone on Stomach	6	7	3	6	4	6	7	4	3
Alone on Back	1	0	0	0	2	1	1	2	2
Alone Unknown	1	2	1	1	1	1	2	1	0
unknown/unclear	1		1	1	0	0	0	0	0
	2003	2004	2005	2006	2007	2008	2009	2010	2011
Natural	4	3	0	4	1	4	2	2	5
Accident	12	14	16	17	17	17	16	21	6
Homicide	2	2	3	2	0	2	1	3	1
Undetermined	2	4	6	5	5	3	5	3	5
Total	20	23	25	28	23	26	24	29	17

Of the 10 sleep associated infant deaths, only 1 of the infants died while reportedly sleeping in safe circumstances (alone on their back, and on a device designed for infant sleeping), and that infant died from bronchopneumonia. 5 of the infants died while sleeping with others (Co-Sleeping), 2 died while put to sleep face down, 1 died while put to sleep face down on a waterbed, and 1 died with blankets covering the mouth and nose.

	2002	2003	2004	2005	2006	2007	2008	2009	2010	2011
SIDS *	0	0	0	0	0	0	0	0	0	0
Natural disease or illness	2	4	3	0	4	1	4	2	2	5
Asphyxia - Accident	4	8	12	12	14	14	17	15	17	5
Blunt force - Accident	0	1	0	1	0	1	0	1	1	0
Other Accident	2	3	2	3	3	2	0	0	3	1
Blunt force - Homicide	2	1	1	2	0	0	2	1	3	1
Undetermined	8	2	4	6	5	5	3	5	3	5
Other Homicide		1	1	1	2	0	0	0	0	0

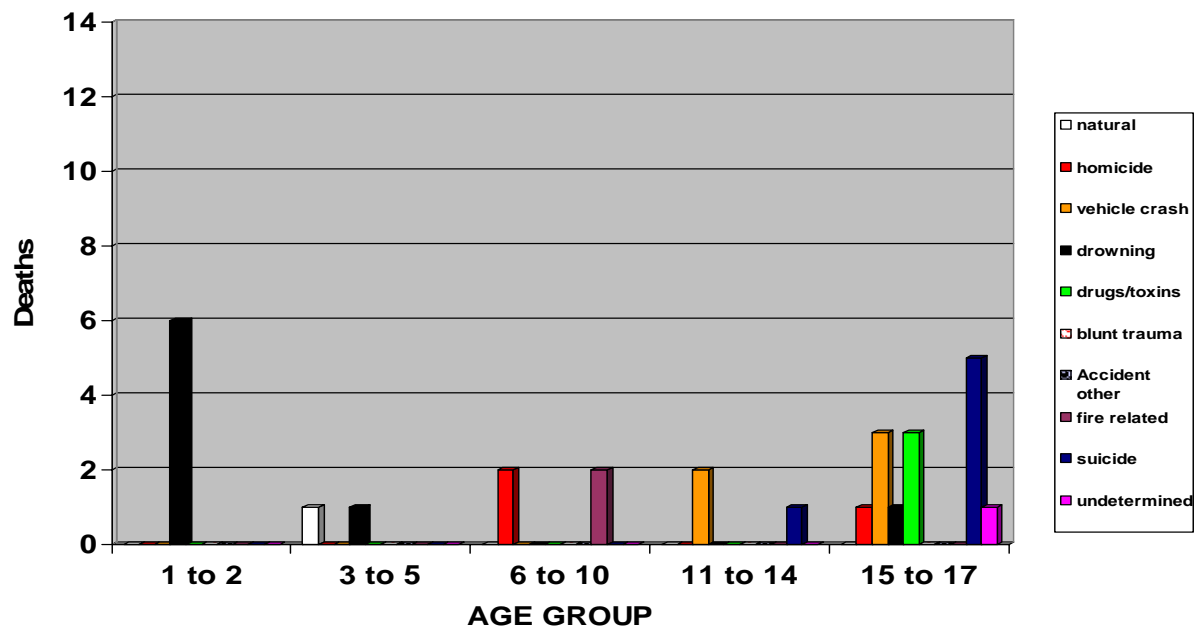
* **Sudden Infant Death Syndrome (SIDS):** the death of an infant less than one year of age which remains unexplained after thorough case investigation, including performance of a complete autopsy, examination of the death scene, and review of the clinical history. Thus, SIDS is a diagnosis by exclusion (Willinger et al, 1991).

INFANT DEATHS CONT..

INFANT/CHILD DEATHS BY AGE (2011)



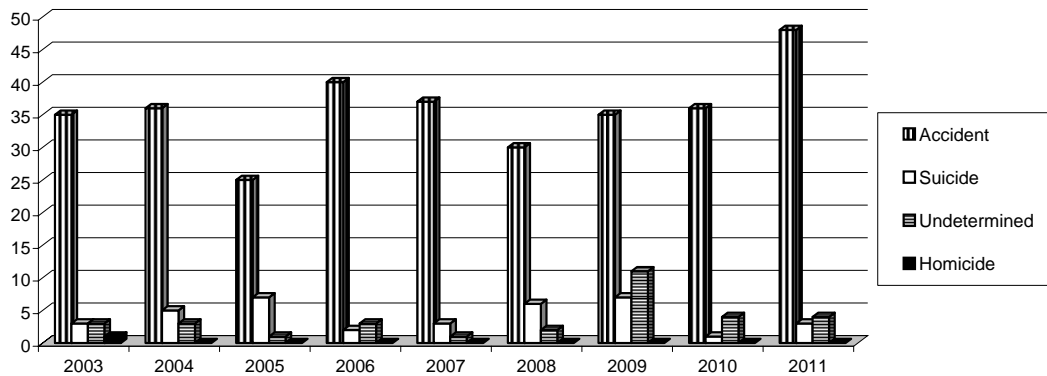
CHILD DEATHS BY TYPE (2011)



DROWNINGS BY MANNER OF DEATH

	2003	2004	2005	2006	2007	2008	2009	2010	2011
Accident	35	36	25	40	37	30	35	36	48
Suicide	3	5	7	2	3	6	7	1	3
Undetermined	3	3	1	3	1	2	11	4	4
Homicide	1	0	0	0	0	0	0	0	0

DROWNINGS BY MANNER



DROWNING BY AGE GROUP

	2003	2004	2005	2006	2007	2008	2009	2010	2011
0-10	5	5	5	6	6	3	8	10	8
11-30	4	5	5	1	6	5	7	3	3
31-50	16	20	9	19	10	12	15	11	15
51-70	9	9	8	11	13	9	16	10	15
71+	7	5	7	8	6	9	7	7	14

DROWNING AGE 0-5 YEARS

Pool	4	4	5	5	4	3	6	9	7
Bathtub	0	0	0	1	0	0	2	1	0
Other	2	0	0	0	0	0	0	0	1

ACCIDENTAL DROWNING BY LOCATION

Swimming Pool	5	12	8	10	16	6	18	17	22
Gulf waters	6	7	8	5	6	13	13	10	15
Lake/Pond	8	4	5	5	5	8	9	4	3
Tampa Bay waters	1	5	1	7	5	1	2	0	2
Bathtub	2	2	2	6	2	2	6	4	2
Spa	0	1	1	4	1	0	2	1	0
Canal	1	1	0	3	1	0	1	0	1
River	2	0	0	0	0	0	1	0	2
Other Misc.	2	3	0	0	1	0	1	0	1
Total	27	35	25	40	37	30	53	36	48

TOXICOLOGY

MEDICAL EXAMINER CASES WHERE TOXICOLOGY WAS PERFORMED

	2005	2006	2007	2008	2009	2010	2011
Cases submitted to Toxicology	1286	1401	1361	1460	1492	1576	1492
Cases where Toxicology was performed	998	1144	1066	1119	1174	1218	1142

MEDICAL EXAMINER CASES TESTING POSITIVE FOR DRUGS

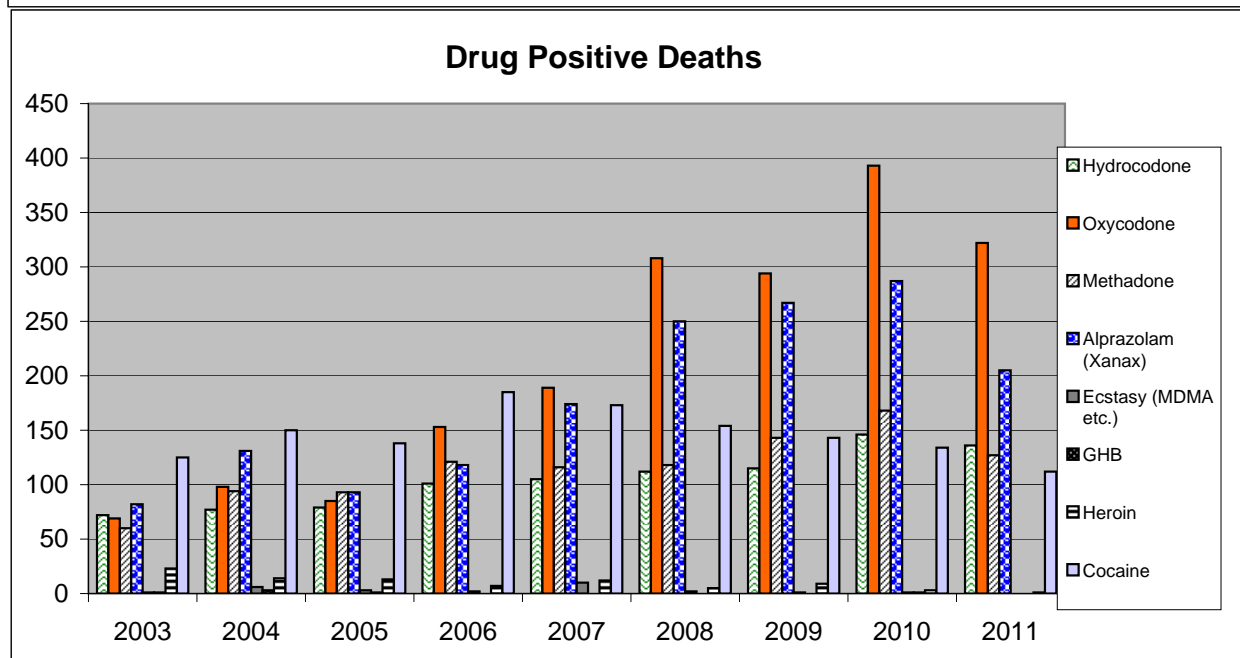
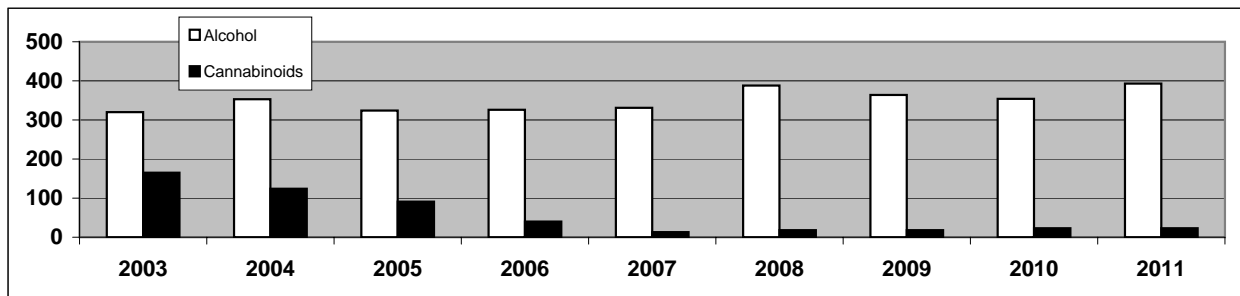
	2003	2004	2005	2006	2007	2008	2009	2010	2011
Alcohol	320	353	324	326	331	388	364	354	393
Cannabinoids	165	124	91	40	13	18	18	23	23

	2003	2004	2005	2006	2007	2008	2009	2010	2011
Hydrocodone	72	77	79	101	105	112	115	146	136
Oxycodone	69	98	85	153	189	308	294	393	322
Methadone	60	94	93	121	116	118	143	168	127
Alprazolam (Xanax)	82	131	93	118	174	250	267	287	205
Ecstasy (MDMA etc.)	1	6	3	2	10	2	1	1	0
GHB	1	3	1	0	0	0	0	1	0
Heroin	23	14	13	7	12	5	9	3	1
Cocaine	125	150	138	185	173	154	143	134	112

DRUGS or TOXIN RELATED CAUSE OF DEATH (Accidental Manner)

<u>Pinellas</u>	<u>2009</u>	<u>2010</u>	<u>2011</u>
Prescription Drug	179	207	181
Illicit Drug	19	17	11
Combined (Prescription & Illicit)	39	42	36
Alcohol (ethanol)	10	11	14
Inhalant	1	2	1
Chemicals/Poisons	1	1	0
Total Drug Related	249	280	243

<u>Pasco</u>	<u>2009</u>	<u>2010</u>	<u>2011</u>
Prescription Drug	126	142	109
Illicit Drug	0	5	0
Combined (Prescription & Illicit)	22	11	13
Alcohol (ethanol)	2	2	2
Inhalant	2	2	2
Chemicals/Poisons	1	3	0
Total Drug Related	153	165	126



UNIDENTIFIED PERSONS										
----------------------	--	--	--	--	--	--	--	--	--	--

	2002	2003	2004	2005	2006	2007	2008	2009	2010	2011
Pinellas	1	0	0	1	0	0	1	0	1	0
Pasco	0	0	0	0	0	0	0	1	1	0
Total	1	0	0	1	0	0	1	1	2	0
	ID'd 6/26/07						ID'd 05/10		ID'd 10/11	ID'd 08/11

2005**#5050078**

Date Found: 1/12/2005

Location Found: 44000 Block of U.S. 19 North, Tarpon Springs - Skeletal remains found in wooded area

Race: White (estimated)

Gender: Male (estimated)

Age: 40 - 55 (estimated)

Height: 5' 8" - 6' 3" (estimated)

Weight: Unknown

Hair Color: Unknown

Eye Color: Unknown

Law Enforcement Agency: Tarpon Springs Police Department

Agency Case #: 05-142

NamUs #: UP 116 <https://identifyus.org/cases/116>
<https://identifyus.org/cases/116>

Unidentified Persons cont.....**2009****#5091701**

Date Found: 11/20/2009

Location Found: 11721 U.S. Hwy 19, Port Richey, FL 34668 (Pasco County, Wooded area)

Race: White

Gender: Male

Age: 39 - 65

Height: 5' 11"

Weight: unk.

Hair Color: unk.

Eye Color: unk.

Law Enforcement Agency: Pasco County Sheriff's Office

Agency Case #: 09-68244

Other Information: Unidentified white male was found in a wooded area near the USA Flea Market in Port Richey, FL. Decedent was decomposing and partially burned. Transients are known to Believed to have died within 1 month or less of being found.

Clothing: Dark colored Joe Boxer underwear/pants/shorts size Large. Light colored shirt

NamUs #: UP 6598 <https://identifyus.org/cases/6598>

NCIC Unidentified #: U100023034

<https://identifyus.org/cases/6598>

INDIGENT / UNCLAIMED

Medical Examiner Cases Released as Indigent/Unclaimed *

	2005	2006	2007	2008	2009	2009	2010	2011
Pinellas	28	39	39	44	45	45	58	146
Pasco	4	11	17	24	20	20	12	45
Total:	32	50	56	68	65	65	70	191

* Only reflects Medical Examiner cases, not all District deaths. May have later been determined to not be indigent or unclaimed.

Organ & Tissue Donation

	2007	2008	2009	2010	2011
Organ Donations	29	28	37	25	41
Tissue Donations	55	48	51	28	38
Corneal Donations	90	96	143	104	107

* Only reflects the number of organ and/or tissue donations for Medical Examiner cases, not all District deaths.

Exhumations

	2006	2007	2008	2009	2010	2011
Pinellas	0	0	0	0	4	0
Pasco	0	0	0	0	2	0
Total	0	0	0	0	6	0