

MEDICAL EXAMINER
District Six

Pasco & Pinellas Counties



10900 Ulmerton Road
Largo, FL 33778
727-582-6800
(Fax 727-582-6820)

www.co.pinellas.fl.us/forensics

YEAR 2010

MEDICAL EXAMINER

ANNUAL REPORT

TABLE OF CONTENTS

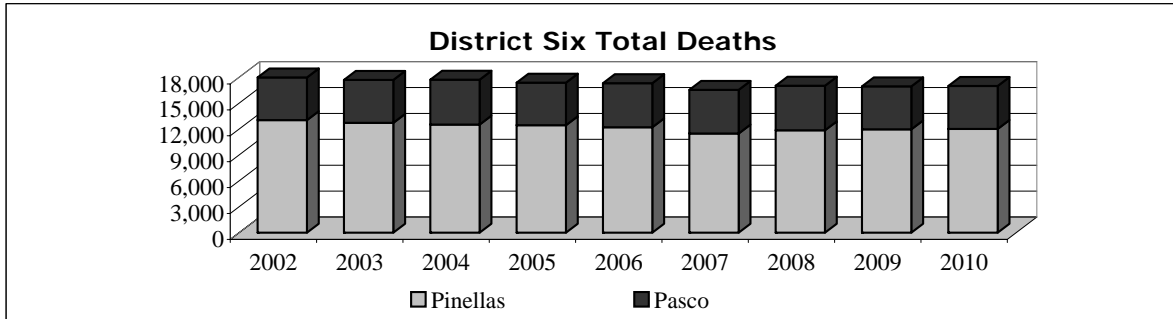
| Section: | Page #: |
|--|----------------|
| Population, District Deaths, Cases Accepted | 1 |
| Workload by Type of Examination | 2 |
| Scenes Investigated, Persons Transported | 3 |
| Deaths By Manner of Death | 4 |
| Homicide Investigations | 5 |
| Suicide Investigations | 6 |
| Accidental Deaths, Motor Vehicle Deaths | 7 - 9 |
| Accidental Deaths, Non-Motor Vehicle Related | 10 |
| Infant Deaths | 11 - 12 |
| Infant & Child Deaths (age 1-17) | 13 |
| Drowning Deaths | 14 |
| Toxicology - Drug Positive & Drug Cause of Death | 15 - 16 |
| Unidentified Persons | 17 - 20 |
| Indigent / Unclaimed Persons | 21 |
| Organ & Tissue Donation | 21 |

| | 2002 | 2003 | 2004 | 2005 | 2006 | 2007 | 2008 | 2009 | 2010 |
|---------------------|-----------|-----------|-----------|-----------|-----------|-----------|-----------|-----------|-----------|
| Population * | | | | | | | | | |
| Pinellas | 935,274 | 941,435 | 944,966 | 947,744 | 924,413 | 917,437 | 940,645 | 931,113 | 916,542 |
| Pasco | 364,900 | 378,085 | 392,507 | 406,857 | 450,171 | 462,715 | 441,188 | 438,668 | 464,697 |
| Total | 1,300,174 | 1,319,520 | 1,337,473 | 1,354,601 | 1,374,584 | 1,380,152 | 1,381,833 | 1,369,781 | 1,381,239 |

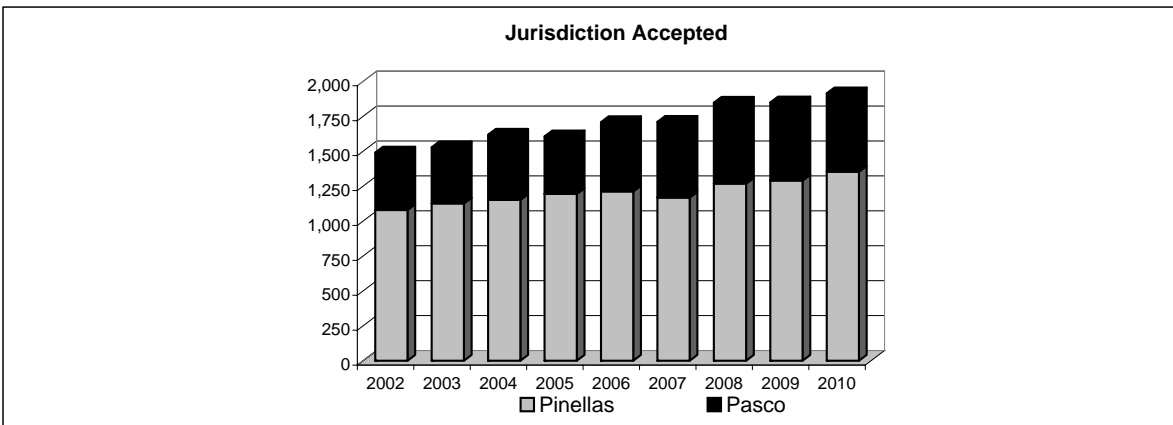
* SOURCE: U.S. Census Bureau, 2010 Census Results. (<http://2010.census.gov/2010census/data/>)

| | 2002 | 2003 | 2004 | 2005 | 2006 | 2007 | 2008 | 2009 | 2010 |
|--------------------------|--------|--------|--------|--------|--------|--------|--------|--------|--------|
| District Deaths * | | | | | | | | | |
| Pinellas | 13,037 | 12,718 | 12,518 | 12,447 | 12,207 | 11,484 | 11,859 | 11,968 | 12,012 |
| Pasco | 4,944 | 4,975 | 5,201 | 4,926 | 5,108 | 5,053 | 5,161 | 4,978 | 4,981 |
| Total | 17,981 | 17,693 | 17,719 | 17,373 | 17,315 | 16,537 | 17,020 | 16,946 | 16,993 |

* SOURCE: Office of Vital Statistics, Florida Department of Health

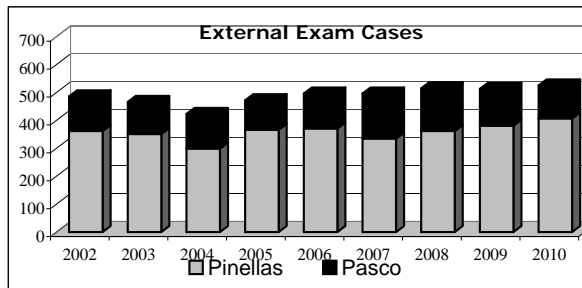
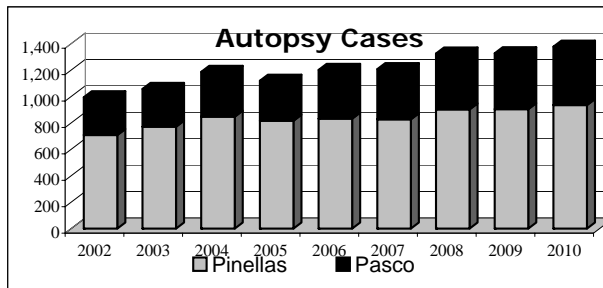


| | 2002 | 2003 | 2004 | 2005 | 2006 | 2007 | 2008 | 2009 | 2010 |
|-----------------------|-------|-------|-------|-------|-------|-------|-------|-------|-------|
| Cases Accepted | | | | | | | | | |
| Pinellas | 1,079 | 1,126 | 1,152 | 1,194 | 1,212 | 1,168 | 1,268 | 1,290 | 1,353 |
| Pasco | 411 | 402 | 466 | 412 | 496 | 542 | 579 | 559 | 561 |
| Total | 1,490 | 1,528 | 1,618 | 1,606 | 1,708 | 1,710 | 1,847 | 1,849 | 1,914 |



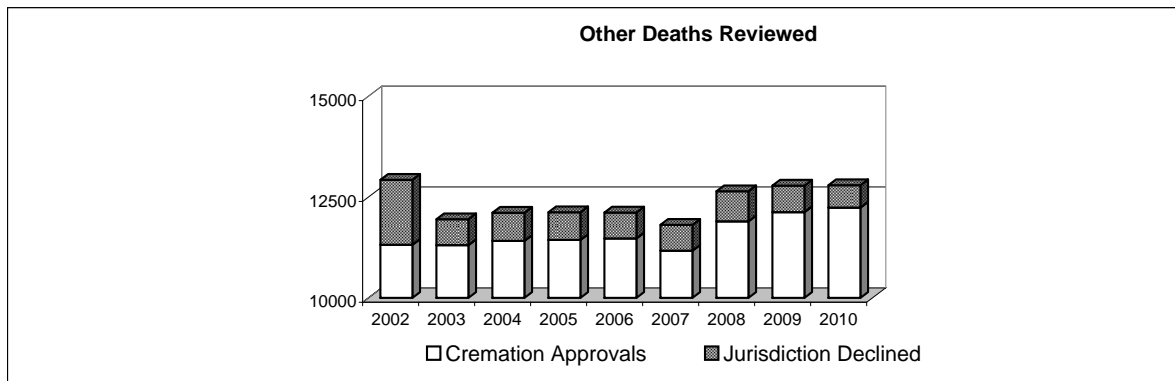
WORKLOAD BY TYPE OF EXAMINATION:

| | 2002 | 2003 | 2004 | 2005 | 2006 | 2007 | 2008 | 2009 | 2010 |
|-----------------------|-------|-------|-------|-------|-------|-------|-------|-------|-------|
| Autopsies | | | | | | | | | |
| Pinellas | 708 | 771 | 847 | 816 | 832 | 827 | 902 | 904 | 935 |
| (Partial Autopsies) | 9 | 4 | 6 | 12 | 9 | 6 | 4 | 5 | 11 |
| Pasco | 286 | 286 | 339 | 303 | 369 | 380 | 423 | 423 | 442 |
| (Partial Autopsies) | 1 | 1 | 3 | 3 | 2 | 1 | 3 | 4 | 1 |
| Total | 1,004 | 1,062 | 1,195 | 1,134 | 1,212 | 1,214 | 1,332 | 1,336 | 1,389 |
| External Exams | | | | | | | | | |
| Pinellas | 362 | 351 | 299 | 366 | 371 | 335 | 362 | 381 | 407 |
| Pasco | 124 | 115 | 124 | 106 | 125 | 161 | 153 | 132 | 118 |
| Total | 486 | 466 | 423 | 472 | 496 | 496 | 515 | 513 | 525 |



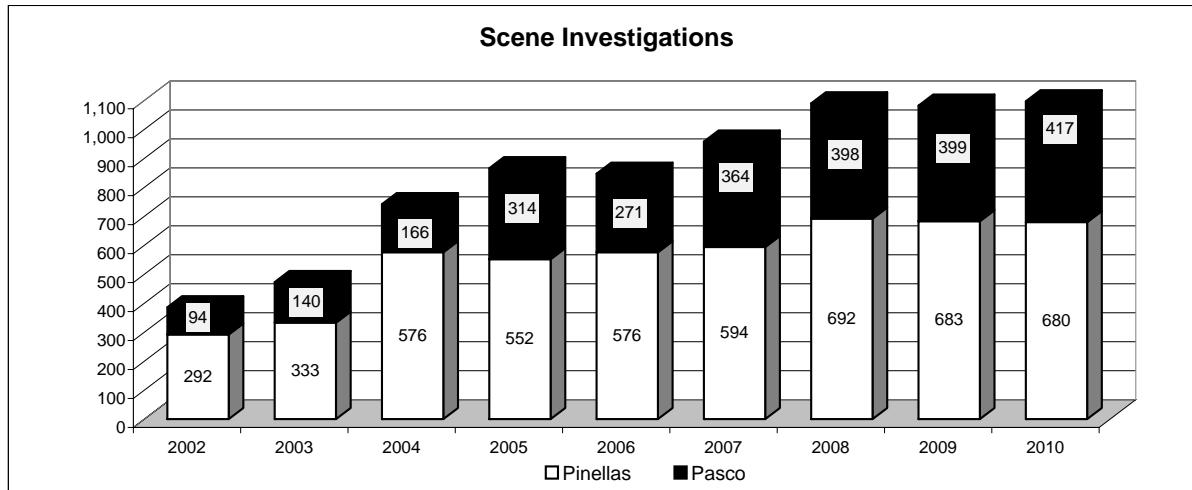
| | 2002 | 2003 | 2004 | 2005 | 2006 | 2007 | 2008 | 2009 | 2010 |
|----------------------------|--------|--------|--------|--------|--------|--------|--------|--------|--------|
| Cremation Approvals | | | | | | | | | |
| Pinellas | 8,343 | 8,235 | 8,190 | 8,297 | 8,194 | 7,862 | 8,339 | 8,648 | 8,691 |
| Pasco | 2,975 | 3,074 | 3,224 | 3,140 | 3,282 | 3,309 | 3,560 | 3,479 | 3,549 |
| Total | 11,318 | 11,309 | 11,414 | 11,437 | 11,476 | 11,171 | 11,899 | 12,127 | 12,240 |

| | 2002 | 2003 | 2004 | 2005 | 2006 | 2007 | 2008 | 2009 | 2010 |
|------------------------------|-------|------|------|------|------|------|------|------|------|
| Jurisdiction Declined | | | | | | | | | |
| Pinellas | 1,146 | 490 | 528 | 499 | 471 | 452 | 541 | 479 | 404 |
| Pasco | 464 | 151 | 169 | 187 | 169 | 188 | 204 | 178 | 151 |
| Total | 1,610 | 641 | 697 | 686 | 640 | 640 | 745 | 657 | 555 |



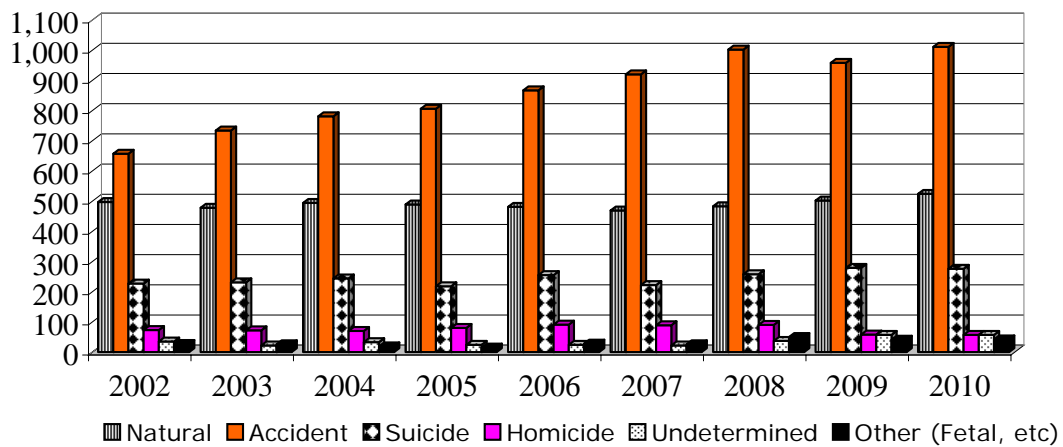
| Decedent Transportation | | 2004 | 2005 | 2006 | 2007 | 2008 | 2009 | 2010 |
|-----------------------------------|--|--------------|--------------|--------------|--------------|--------------|--------------|--------------|
| <u>Pinellas</u> | | | | | | | | |
| Medical Examiner Office | | 1143 | 1180 | 1202 | 1153 | 1258 | 1281 | 1340 |
| Life Link | | 5 | 11 | 10 | 14 | 12 | 8 | 6 |
| Other | | 6 | 10 | 10 | 24 | 42 | 34 | 25 |
| Total Pinellas | | 1154 | 1201 | 1222 | 1191 | 1312 | 1323 | 1371 |
| <u>Pasco</u> | | | | | | | | |
| Medical Examiner Office | | 465 | 411 | 495 | 539 | 581 | 561 | 562 |
| Life Link | | 0 | 1 | 2 | 1 | 0 | 1 | 0 |
| Other | | 3 | 4 | 1 | 1 | 3 | 1 | 1 |
| Total Pasco | | 468 | 416 | 498 | 541 | 584 | 563 | 563 |
| District Total Transported | | 1,622 | 1,617 | 1,720 | 1,732 | 1,896 | 1,886 | 1,934 |

| Scene Investigations | | 2002 | 2003 | 2004 | 2005 | 2006 | 2007 | 2008 | 2009 | 2010 |
|----------------------|--|------------|------------|------------|------------|------------|------------|--------------|--------------|--------------|
| Pinellas | | 292 | 333 | 576 | 552 | 576 | 594 | 692 | 683 | 680 |
| Pasco | | 94 | 140 | 166 | 314 | 271 | 364 | 398 | 399 | 417 |
| Total | | 386 | 473 | 742 | 866 | 847 | 958 | 1,090 | 1,082 | 1,097 |



| District Deaths by Manner of Death | 2002 | 2003 | 2004 | 2005 | 2006 | 2007 | 2008 | 2009 | 2010 |
|------------------------------------|-------|-------|-------|-------|-------|-------|-------|-------|-------|
| Natural | 497 | 478 | 494 | 489 | 481 | 469 | 483 | 502 | 524 |
| Accident | 657 | 734 | 781 | 806 | 867 | 920 | 1002 | 958 | 1011 |
| Suicide | 227 | 231 | 244 | 218 | 255 | 222 | 258 | 279 | 276 |
| Homicide | 73 | 72 | 70 | 80 | 91 | 89 | 90 | 58 | 57 |
| Undetermined | 35 | 22 | 33 | 24 | 24 | 22 | 37 | 57 | 57 |
| Other (Fetal, etc) | 27 | 26 | 19 | 15 | 28 | 26 | 50 | 41 | 42 |
| Total | 1,516 | 1,563 | 1,641 | 1,632 | 1,746 | 1,748 | 1,920 | 1,895 | 1,967 |

District Deaths by Manner of Death

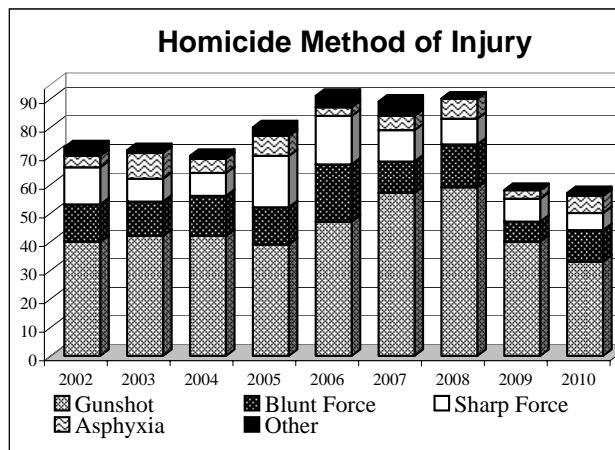
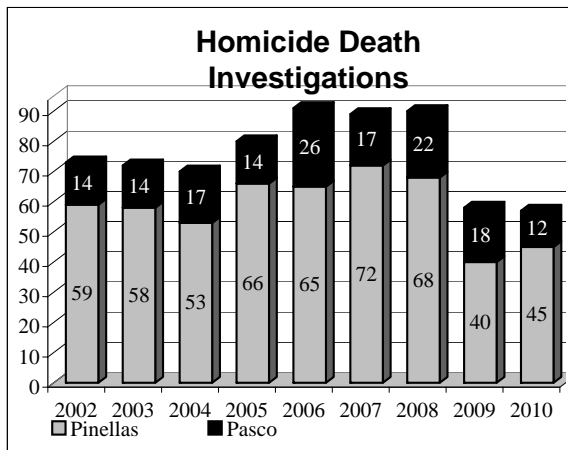


| TOTAL VIOLENT DEATHS | 2000 | 2001 | 2002 | 2003 | 2004 | 2006 | 2007 | 2008 | 2009 | 2010 |
|----------------------|------|------|------|-------|-------|-------|-------|-------|-------|-------|
| | 819 | 924 | 992 | 1,059 | 1,128 | 1,237 | 1,253 | 1,387 | 1,351 | 1,401 |

HOMICIDE DEATH INVESTIGATIONS

| Homicides | 2002 | 2003 | 2004 | 2005 | 2006 | 2007 | 2008 | 2009 | 2010 |
|-----------|------|------|------|------|------|------|------|------|------|
| Pinellas | 59 | 58 | 53 | 66 | 65 | 72 | 68 | 40 | 45 |
| Pasco | 14 | 14 | 17 | 14 | 26 | 17 | 22 | 18 | 12 |
| Total | 73 | 72 | 70 | 80 | 91 | 89 | 90 | 58 | 57 |

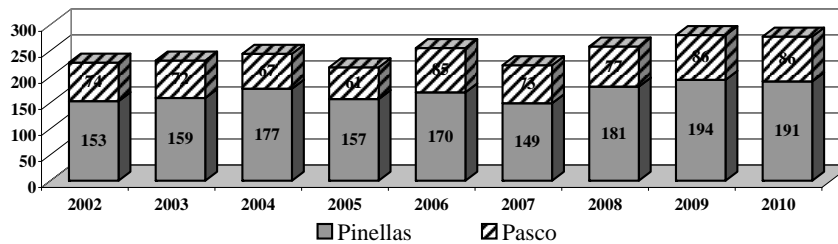
| | 2002 | 2003 | 2004 | 2005 | 2006 | 2007 | 2008 | 2009 | 2010 |
|-------------|------|------|------|------|------|------|------|------|------|
| Gunshot | 40 | 42 | 42 | 39 | 47 | 57 | 59 | 40 | 33 |
| Blunt Force | 13 | 12 | 14 | 13 | 20 | 11 | 15 | 7 | 11 |
| Sharp Force | 13 | 8 | 8 | 18 | 17 | 11 | 9 | 8 | 6 |
| Asphyxia | 4 | 9 | 5 | 7 | 3 | 5 | 7 | 3 | 6 |
| Other | 3 | 1 | 1 | 3 | 4 | 5 | 0 | 0 | 1 |



SUICIDE DEATH INVESTIGATIONS

| | 2002 | 2003 | 2004 | 2005 | 2006 | 2007 | 2008 | 2009 | 2010 |
|----------|------|------|------|------|------|------|------|------|------|
| Pinellas | 153 | 159 | 177 | 157 | 170 | 149 | 181 | 194 | 191 |
| Pasco | 74 | 72 | 67 | 61 | 85 | 73 | 77 | 86 | 86 |
| Total | 227 | 231 | 244 | 218 | 255 | 222 | 258 | 280 | 277 |

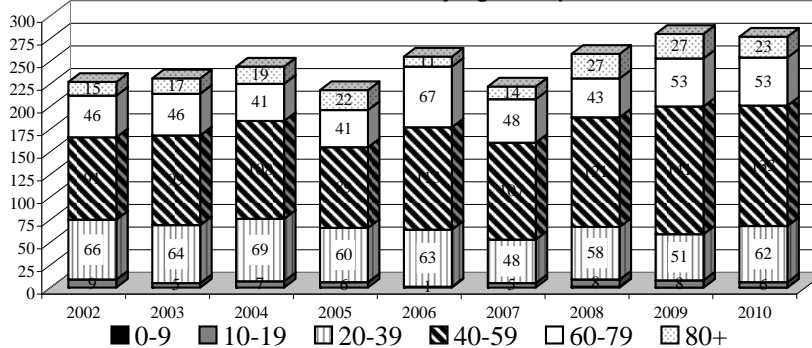
Suicide Death Investigations



| SUICIDE GENDER | 2002 | 2003 | 2004 | 2005 | 2006 | 2007 | 2008 | 2009 | 2010 |
|----------------|------|------|------|------|------|------|------|------|------|
| Male | 174 | 174 | 173 | 172 | 188 | 165 | 194 | 221 | 217 |
| Female | 53 | 57 | 71 | 46 | 67 | 57 | 64 | 59 | 60 |

| Age Group | 2002 | 2003 | 2004 | 2005 | 2006 | 2007 | 2008 | 2009 | 2010 |
|-----------|------|------|------|------|------|------|------|------|------|
| 0-9 | | | | | | | 1 | 0 | 0 |
| 10-19 | 9 | 5 | 7 | 6 | 1 | 5 | 8 | 8 | 6 |
| 20-39 | 66 | 64 | 69 | 60 | 63 | 48 | 58 | 51 | 62 |
| 40-59 | 91 | 99 | 108 | 89 | 113 | 107 | 121 | 141 | 133 |
| 60-79 | 46 | 46 | 41 | 41 | 67 | 48 | 43 | 53 | 53 |
| 80+ | 15 | 17 | 19 | 22 | 11 | 14 | 27 | 27 | 23 |
| Total | 227 | 231 | 244 | 218 | 255 | 222 | 258 | 280 | 277 |

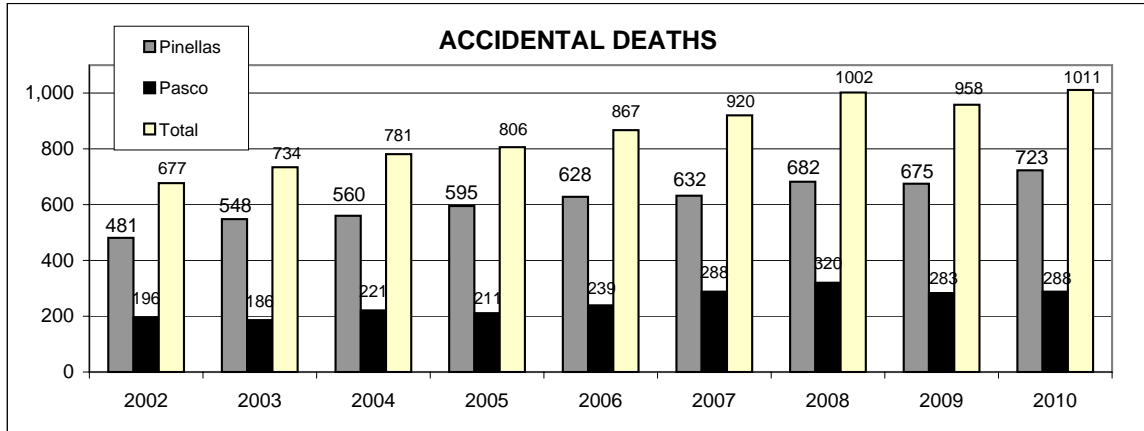
Suicide Deaths by Age Group



ACCIDENTAL DEATH INVESTIGATIONS

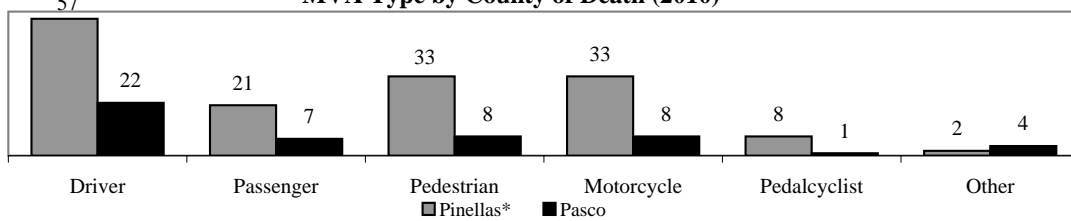
TOTAL ACCIDENTAL DEATHS (Motor Vehicle Accident (MVA) & Non-Motor Vehicle Accident)

| | 2002 | 2003 | 2004 | 2005 | 2006 | 2007 | 2008 | 2009 | 2010 |
|----------|------|------|------|------|------|------|------|------|------|
| Pinellas | 481 | 548 | 560 | 595 | 628 | 632 | 682 | 675 | 723 |
| Pasco | 196 | 186 | 221 | 211 | 239 | 288 | 320 | 283 | 288 |
| Total | 677 | 734 | 781 | 806 | 867 | 920 | 1002 | 958 | 1011 |



MOTOR VEHICLE DEATHS

MVA Type by County of Death (2010)



Traffic Fatalities by County of Death for Year 2010

*** Includes victims that sustained injuries in counties other than Pinellas, but were taken to Pinellas hospitals and eventually died in Pinellas from injuries sustained in the other county.**

| | Pinellas* | Pasco | District |
|--------------|-----------|-------|----------|
| Driver | 57 | 22 | 79 |
| Passenger | 21 | 7 | 28 |
| Pedestrian | 33 | 8 | 41 |
| Motorcycle | 33 | 8 | 41 |
| Pedalcyclist | 8 | 1 | 9 |
| Other | 2 | 4 | 6 |
| Totals: | 154 | 50 | 204 |

| | 2002 | 2003 | 2004 | 2005 | 2006 | 2007 | 2008 | 2009 | 2010 |
|--------------|------|------|------|------|------|------|------|------|------|
| Driver | 120 | 84 | 76 | 86 | 85 | 90 | 88 | 74 | 79 |
| Passenger | 29 | 33 | 29 | 44 | 38 | 46 | 30 | 25 | 28 |
| Pedestrian | 63 | 57 | 72 | 63 | 53 | 42 | 56 | 50 | 41 |
| Motorcycle | 25 | 37 | 36 | 32 | 42 | 57 | 55 | 37 | 41 |
| Pedalcyclist | 9 | 16 | 23 | 18 | 13 | 12 | 16 | 15 | 9 |
| Other | 4 | 9 | 6 | 3 | 18 | 4 | 4 | 7 | 6 |
| Total | 250 | 236 | 242 | 246 | 249 | 251 | 249 | 208 | 204 |

MOTOR VEHICLE DEATHS CONT..

| DRIVERS | 2002 | 2003 | 2004 | 2005 | 2006 | 2007 | 2008 | 2009 | 2010 |
|---------------------------|-------------|-------------|-------------|-------------|-------------|-------------|-------------|-------------|-------------|
| Less than 20 Years of Age | 7 | 8 | 3 | 5 | 5 | 10 | 6 | 4 | 1 |
| 20-29 | 21 | 16 | 15 | 12 | 16 | 17 | 18 | 15 | 12 |
| 30-39 | 17 | 14 | 6 | 6 | 9 | 6 | 16 | 6 | 9 |
| 40-49 | 13 | 11 | 13 | 10 | 16 | 11 | 14 | 7 | 13 |
| 50-59 | 13 | 10 | 8 | 13 | 9 | 18 | 7 | 11 | 10 |
| 60-69 | 12 | 10 | 4 | 9 | 7 | 7 | 5 | 8 | 11 |
| 70-79 | 13 | 5 | 8 | 14 | 11 | 6 | 14 | 11 | 9 |
| 80-89 | 21 | 8 | 18 | 17 | 10 | 12 | 7 | 10 | 10 |
| 90+ | 3 | 2 | 1 | 0 | 2 | 3 | 1 | 2 | 4 |
| Totals | 120 | 84 | 76 | 86 | 85 | 90 | 88 | 74 | 79 |

MOTOR VEHICLE FATALITY TYPE BY COUNTY OF INJURY**Pinellas County**

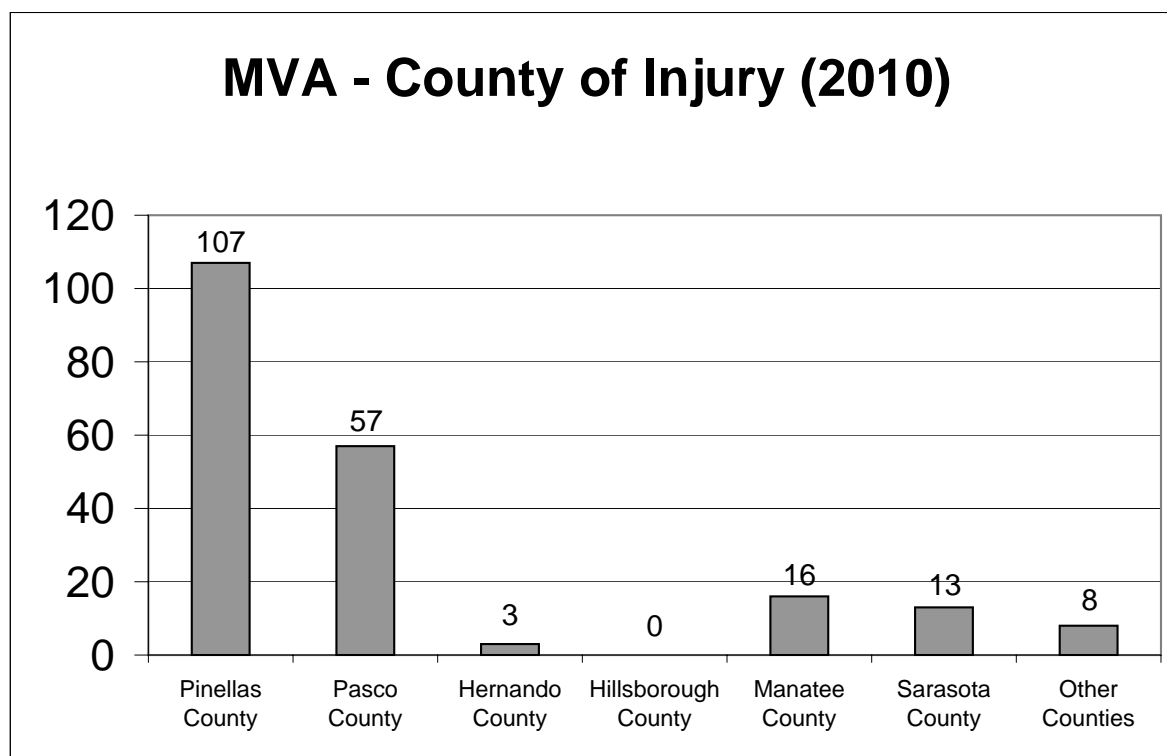
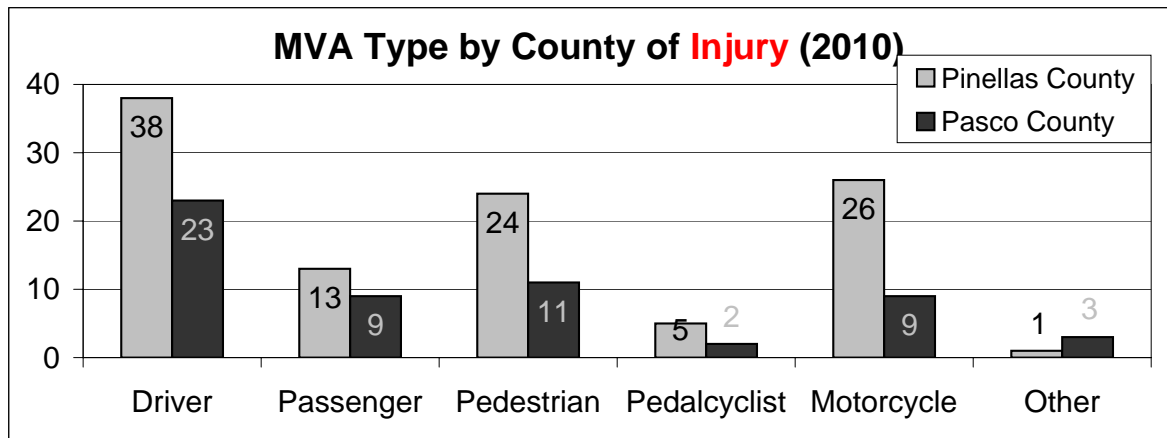
| LOCATION | Driver | Passenger | Pedestrian | Pedalcyclist | Motorcycle | Other | Total |
|---------------|-----------|-----------|------------|--------------|------------|----------|------------|
| US 19 | 2 | 3 | 0 | 0 | 6 | 0 | 11 |
| ALT 19 | 0 | 0 | 2 | 1 | 1 | 0 | 4 |
| I-275 | 7 | 1 | 0 | 0 | 2 | 0 | 10 |
| 49th St. SP | 1 | 0 | 1 | 0 | 0 | 0 | 2 |
| McM-Booth | 0 | 1 | 0 | 0 | 1 | 0 | 2 |
| Gulf Blvd | 1 | 0 | 2 | 0 | 0 | 0 | 3 |
| Belcher | 2 | 0 | 0 | 0 | 1 | 0 | 3 |
| Starkey/Keene | 0 | 0 | 1 | 0 | 1 | 0 | 2 |
| Ulmerton | 2 | 1 | 2 | 0 | 0 | 0 | 5 |
| SR 60 G-B | 0 | 1 | 4 | 0 | 1 | 0 | 6 |
| Pk./Gandy Bl | 1 | 0 | 3 | 0 | 1 | 0 | 5 |
| All Others | 22 | 6 | 9 | 4 | 12 | 1 | 54 |
| Total | 38 | 13 | 24 | 5 | 26 | 1 | 107 |

Pasco County

| LOCATION | Driver | Passenger | Pedestrian | Pedalcyclist | Motorcycle | Other | Total |
|--------------|-----------|-----------|------------|--------------|------------|----------|-----------|
| US 19 | 3 | 1 | 4 | 0 | 2 | 0 | 10 |
| I-75 | 2 | 2 | 0 | 0 | 0 | 0 | 4 |
| Suncoast | 1 | 0 | 0 | 0 | 0 | 0 | 1 |
| US 301 | 1 | 1 | 0 | 0 | 0 | 0 | 2 |
| US 41 | 1 | 1 | 0 | 1 | 0 | 0 | 3 |
| SR 52 | 4 | 0 | 0 | 0 | 0 | 0 | 4 |
| SR 54 | 6 | 0 | 1 | 0 | 1 | 0 | 8 |
| Little Road | 1 | 1 | 0 | 0 | 2 | 0 | 4 |
| All Others | 4 | 3 | 6 | 1 | 4 | 3 | 21 |
| Total | 23 | 9 | 11 | 2 | 9 | 3 | 57 |

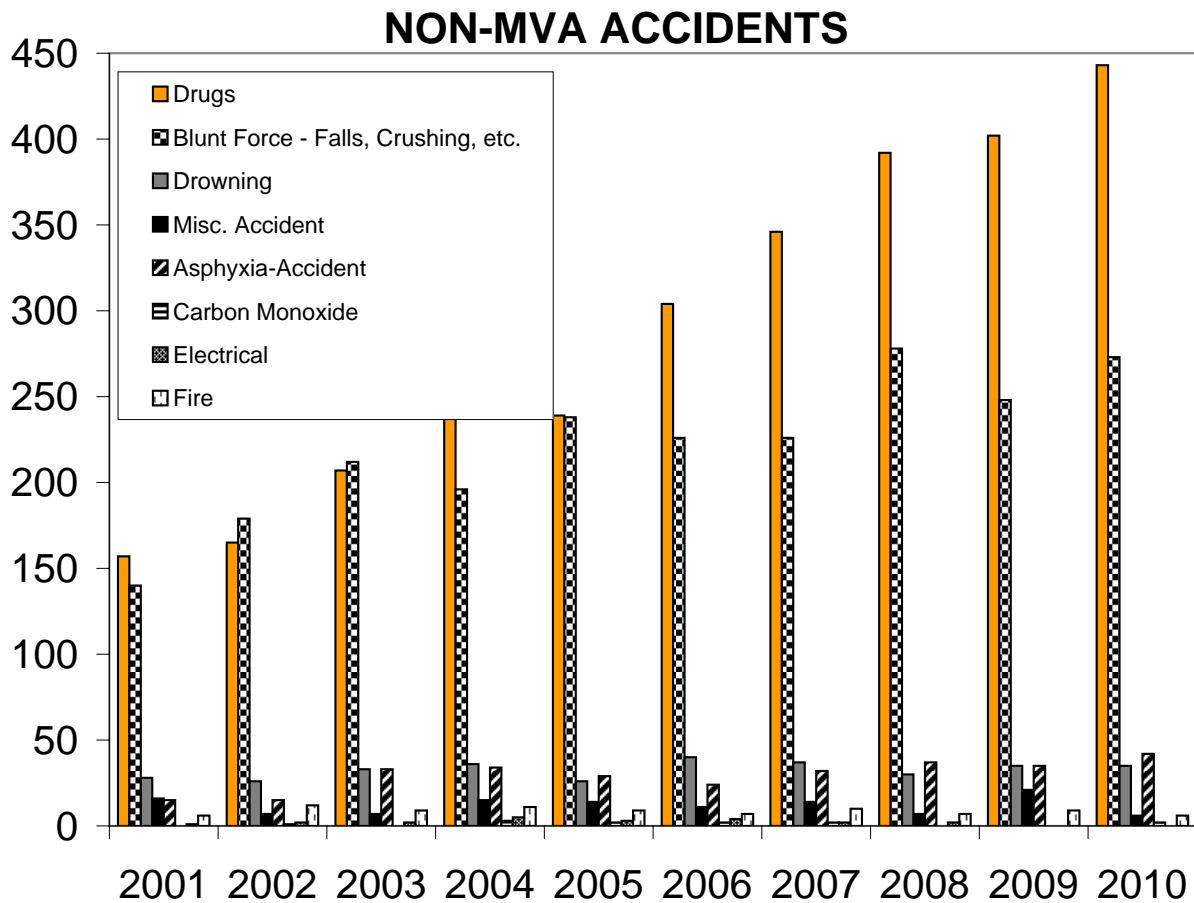
Out of District Location

| | Total |
|---------------------|-----------|
| Hernando County | 3 |
| Hillsborough County | 0 |
| Manatee County | 16 |
| Sarasota County | 13 |
| Other Counties | 8 |
| Total | 40 |



NON MOTOR VEHICLE RELATED ACCIDENTS

| | 2001 | 2002 | 2003 | 2004 | 2005 | 2006 | 2007 | 2008 | 2009 | 2010 |
|-------------------------------------|------------|------------|------------|------------|------------|------------|------------|------------|------------|------------|
| Drugs | 157 | 165 | 207 | 239 | 239 | 304 | 346 | 392 | 402 | 443 |
| Blunt Force - Falls, Crushing, etc. | 140 | 179 | 212 | 196 | 238 | 226 | 226 | 278 | 248 | 273 |
| Drowning | 28 | 26 | 33 | 36 | 26 | 40 | 37 | 30 | 35 | 35 |
| Misc. Accident | 16 | 7 | 7 | 15 | 14 | 11 | 14 | 7 | 21 | 6 |
| Asphyxia-Accident | 15 | 15 | 33 | 34 | 29 | 24 | 32 | 37 | 35 | 42 |
| Carbon Monoxide | 0 | 1 | 0 | 3 | 2 | 2 | 2 | 0 | 0 | 2 |
| Electrical | 1 | 2 | 2 | 5 | 3 | 4 | 2 | 2 | 0 | 0 |
| Fire | 6 | 12 | 9 | 11 | 9 | 7 | 10 | 7 | 9 | 6 |
| Total | 363 | 363 | 503 | 539 | 560 | 618 | 669 | 753 | 750 | 807 |



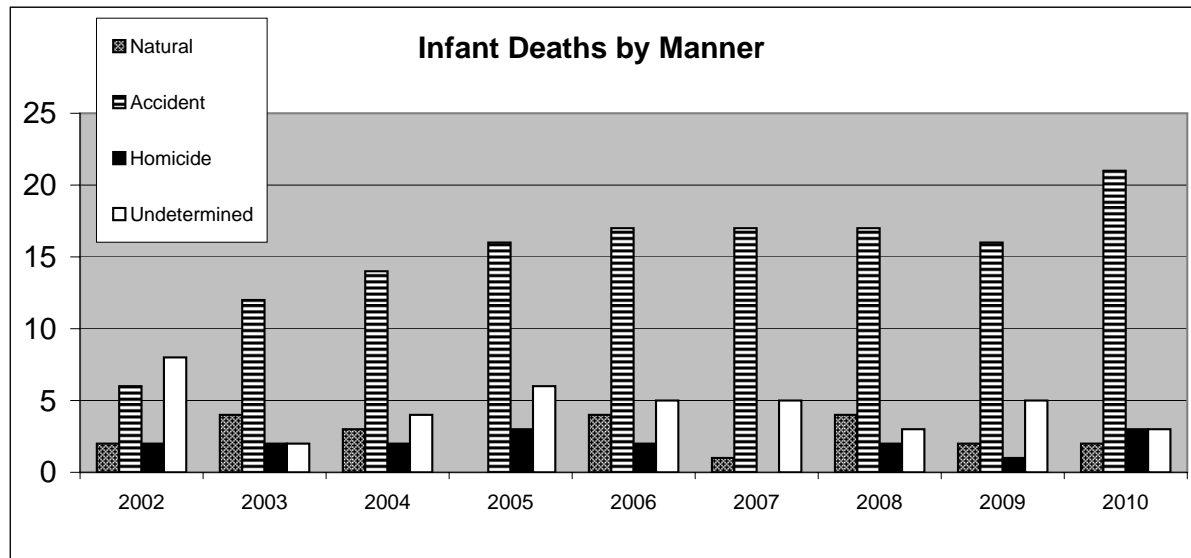
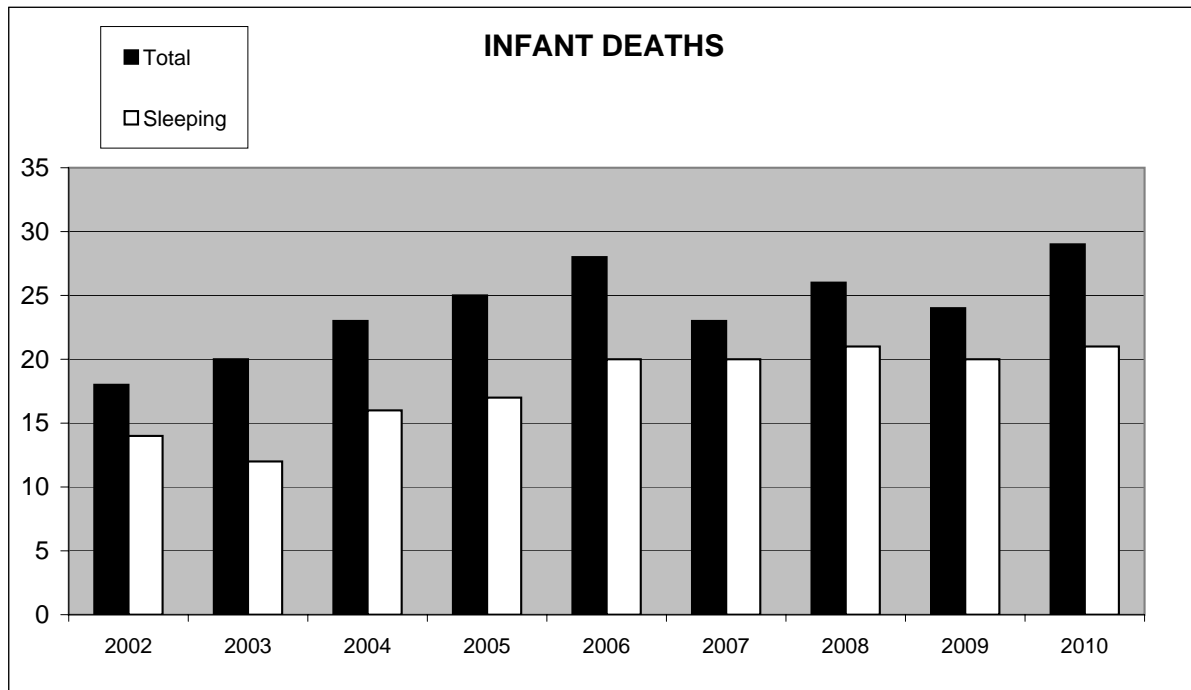
| INFANT DEATHS | | | | | | | | | |
|---------------|--|--|--|--|--|--|--|--|--|
|---------------|--|--|--|--|--|--|--|--|--|

| | 2002 | 2003 | 2004 | 2005 | 2006 | 2007 | 2008 | 2009 | 2010 |
|----------------------|-------|-------|-------|-------|-------|-------|-------|-------|-------|
| Total | 18 | 20 | 23 | 25 | 28 | 23 | 26 | 24 | 29 |
| Sleeping | 14 | 12 | 16 | 17 | 20 | 20 | 21 | 20 | 21 |
| % Sleeping | 77.8% | 60.0% | 69.6% | 68.0% | 71.4% | 87.0% | 80.8% | 83.3% | 72.4% |
| Co-sleeping | 7 | 5 | 3 | 11 | 9 | 13 | 13 | 10 | 14 |
| Sleeping Alone Total | 6 | 8 | 9 | 5 | 8 | 7 | 8 | 10 | 7 |
| Alone on Stomach | 4 | 6 | 7 | 3 | 6 | 4 | 6 | 7 | 4 |
| Alone on Back | 1 | 1 | 0 | 0 | 0 | 2 | 1 | 1 | 2 |
| Alone Unknown | 1 | 1 | 2 | 1 | 1 | 1 | 1 | 2 | 1 |
| unknown/unclear | | 1 | | 1 | 1 | 0 | 0 | 0 | 0 |
| | 2002 | 2003 | 2004 | 2005 | 2006 | 2007 | 2008 | 2009 | 2010 |
| Natural | 2 | 4 | 3 | 0 | 4 | 1 | 4 | 2 | 2 |
| Accident | 6 | 12 | 14 | 16 | 17 | 17 | 17 | 16 | 21 |
| Homicide | 2 | 2 | 2 | 3 | 2 | 0 | 2 | 1 | 3 |
| Undetermined | 8 | 2 | 4 | 6 | 5 | 5 | 3 | 5 | 3 |
| Total | 18 | 20 | 23 | 25 | 28 | 23 | 26 | 24 | 29 |

Of the **21** sleep associated infant deaths, **NONE of the infants died while reportedly sleeping in safe circumstances** (alone, on their back, and on a device designed for infant sleeping). 14 of the infants died while sleep with others (Co-Sleeping), 4 died while put to sleep face down, 1 died while put to sleep on a sofa, 1 died while covered by a comforter on an adult bed, and 1 was found hanging by the neck in a stroller/car seat.

| | 2001 | 2002 | 2003 | 2004 | 2005 | 2006 | 2007 | 2008 | 2009 | 2010 |
|----------------------------|------|------|------|------|------|------|------|------|------|------|
| SIDS * | 0 | 0 | 0 | 0 | 0 | 0 | 0 | 0 | 0 | 0 |
| Natural disease or illness | 2 | 2 | 4 | 3 | 0 | 4 | 1 | 4 | 2 | 2 |
| Asphyxia - Accident | 5 | 4 | 8 | 12 | 12 | 14 | 14 | 17 | 15 | 17 |
| Blunt force - Accident | 1 | 0 | 1 | 0 | 1 | 0 | 1 | 0 | 1 | 1 |
| Other Accident | 0 | 2 | 3 | 2 | 3 | 3 | 2 | 0 | 0 | 3 |
| Blunt force - Homicide | 0 | 2 | 1 | 1 | 2 | 0 | 0 | 2 | 1 | 3 |
| Undetermined | 7 | 8 | 2 | 4 | 6 | 5 | 5 | 3 | 5 | 3 |
| Other Homicide | | | 1 | 1 | 1 | 2 | 0 | 0 | 0 | 0 |

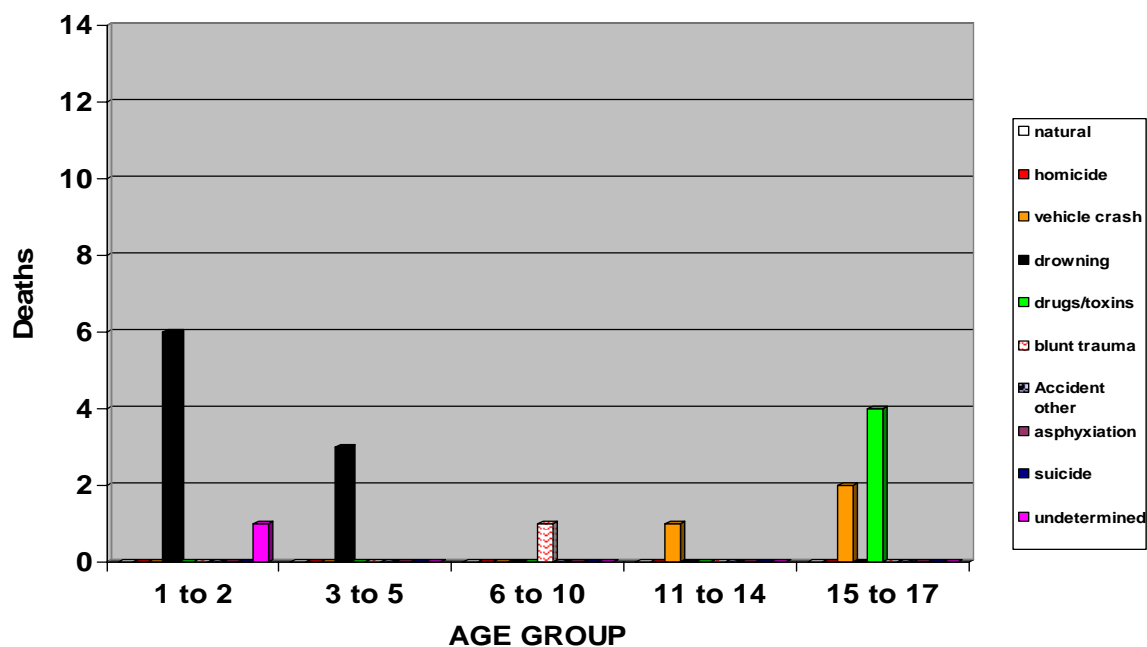
* **Sudden Infant Death Syndrome (SIDS): the death of an infant less than one year of age which remains unexplained after thorough case investigation, including performance of a complete autopsy, examination of the death scene, and review of the clinical history. Thus, SIDS is a diagnosis by exclusio**

INFANT DEATHS CONT..

INFANT/CHILD DEATHS BY AGE (2010)

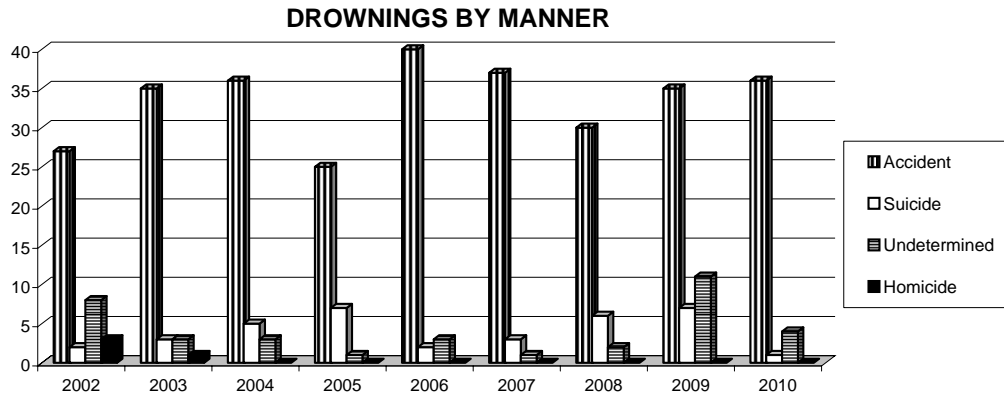


CHILD DEATHS BY TYPE (2010)



DROWNINGS BY MANNER OF DEATH

| | 2002 | 2003 | 2004 | 2005 | 2006 | 2007 | 2008 | 2009 | 2010 |
|--------------|------|------|------|------|------|------|------|------|------|
| Accident | 27 | 35 | 36 | 25 | 40 | 37 | 30 | 35 | 36 |
| Suicide | 2 | 3 | 5 | 7 | 2 | 3 | 6 | 7 | 1 |
| Undetermined | 8 | 3 | 3 | 1 | 3 | 1 | 2 | 11 | 4 |
| Homicide | 3 | 1 | 0 | 0 | 0 | 0 | 0 | 0 | 0 |



DROWNING BY AGE GROUP

| | 2002 | 2003 | 2004 | 2005 | 2006 | 2007 | 2008 | 2009 | 2010 |
|-------|------|------|------|------|------|------|------|------|------|
| 0-10 | 6 | 5 | 5 | 5 | 6 | 6 | 3 | 8 | 10 |
| 11-30 | 8 | 4 | 5 | 5 | 1 | 6 | 5 | 7 | 3 |
| 31-50 | 13 | 16 | 20 | 9 | 19 | 10 | 12 | 15 | 11 |
| 51-70 | 4 | 9 | 9 | 8 | 11 | 13 | 9 | 16 | 10 |
| 71+ | 9 | 7 | 5 | 7 | 8 | 6 | 9 | 7 | 7 |

DROWNING AGE 0-5 YEARS

| | | | | | | | | | |
|---------|---|---|---|---|---|---|---|---|---|
| Pool | 4 | 4 | 4 | 5 | 5 | 4 | 3 | 6 | 9 |
| Bathtub | 0 | 0 | 0 | 0 | 1 | 0 | 0 | 2 | 1 |
| Other | 2 | 2 | 0 | 0 | 0 | 0 | 0 | 0 | 0 |

ACCIDENTAL DROWNING BY LOCATION

| | | | | | | | | | |
|------------------|----|----|----|----|----|----|----|----|----|
| Swimming Pool | 12 | 5 | 12 | 8 | 10 | 16 | 6 | 18 | 17 |
| Gulf waters | 6 | 6 | 7 | 8 | 5 | 6 | 13 | 13 | 10 |
| Lake/Pond | 4 | 8 | 4 | 5 | 5 | 5 | 8 | 9 | 4 |
| Tampa Bay waters | 1 | 1 | 5 | 1 | 7 | 5 | 1 | 2 | 0 |
| Bathtub | 0 | 2 | 2 | 2 | 6 | 2 | 2 | 6 | 4 |
| Spa | 2 | 0 | 1 | 1 | 4 | 1 | 0 | 2 | 1 |
| Canal | 2 | 1 | 1 | 0 | 3 | 1 | 0 | 1 | 0 |
| River | 1 | 2 | 0 | 0 | 0 | 0 | 0 | 1 | 0 |
| Other Misc. | 0 | 2 | 3 | 0 | 0 | 1 | 0 | 1 | 0 |
| Total | 28 | 27 | 35 | 25 | 40 | 37 | 30 | 53 | 36 |

| |
|-------------------|
| TOXICOLOGY |
|-------------------|

MEDICAL EXAMINER CASES WHERE TOXICOLOGY WAS PERFORMED

| | 2005 | 2006 | 2007 | 2008 | 2009 | 2010 |
|--------------------------------------|------|------|------|------|------|------|
| Cases submitted to Toxicology | 1286 | 1401 | 1361 | 1460 | 1492 | 1576 |
| Cases where Toxicology was performed | 998 | 1144 | 1066 | 1119 | 1174 | 1218 |

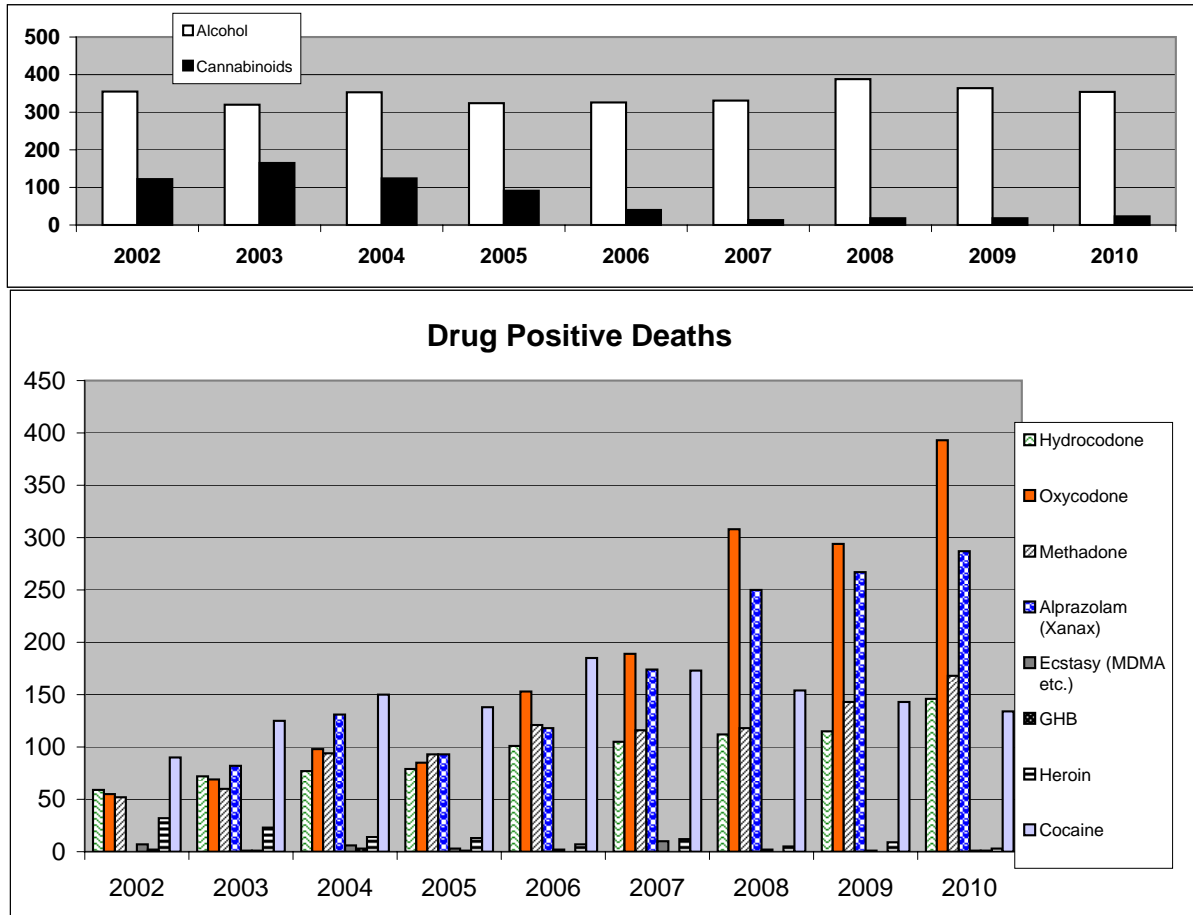
MEDICAL EXAMINER CASES TESTING POSITIVE FOR DRUGS

| | 2002 | 2003 | 2004 | 2005 | 2006 | 2007 | 2008 | 2009 | 2010 |
|---------------------|------|------|------|------|------|------|------|------|------|
| Alcohol | 355 | 320 | 353 | 324 | 326 | 331 | 388 | 364 | 354 |
| Cannabinoids | 122 | 165 | 124 | 91 | 40 | 13 | 18 | 18 | 23 |
| Hydrocodone | 59 | 72 | 77 | 79 | 101 | 105 | 112 | 115 | 146 |
| Oxycodone | 55 | 69 | 98 | 85 | 153 | 189 | 308 | 294 | 393 |
| Methadone | 52 | 60 | 94 | 93 | 121 | 116 | 118 | 143 | 168 |
| Alprazolam (Xanax) | | 82 | 131 | 93 | 118 | 174 | 250 | 267 | 287 |
| Ecstasy (MDMA etc.) | 7 | 1 | 6 | 3 | 2 | 10 | 2 | 1 | 1 |
| GHB | 2 | 1 | 3 | 1 | 0 | 0 | 0 | 0 | 1 |
| Heroin | 32 | 23 | 14 | 13 | 7 | 12 | 5 | 9 | 3 |
| Cocaine | 90 | 125 | 150 | 138 | 185 | 173 | 154 | 143 | 134 |

DRUGS or TOXIN RELATED CAUSE OF DEATH (Accidental Manner)

| <u>Pinellas</u> | <u>2009</u> | <u>2010</u> |
|-----------------------------------|-------------|-------------|
| Prescription Drug | 179 | 207 |
| Illicit Drug | 19 | 17 |
| Combined (Prescription & Illicit) | 39 | 42 |
| Alcohol (ethanol) | 10 | 11 |
| Inhalent | 1 | 2 |
| Chemicals/Poisons | 1 | 1 |
| Total Drug Related | 249 | 280 |

| <u>Pasco</u> | | |
|-----------------------------------|------------|------------|
| Prescription Drug | 126 | 142 |
| Illicit Drug | 0 | 5 |
| Combined (Prescription & Illicit) | 22 | 11 |
| Alcohol (ethanol) | 2 | 2 |
| Inhalent | 2 | 2 |
| Chemicals/Poisons | 1 | 3 |
| Total Drug Related | 153 | 165 |



| |
|-----------------------------|
| UNIDENTIFIED PERSONS |
|-----------------------------|

| | 2001 | 2002 | 2003 | 2004 | 2005 | 2006 | 2007 | 2008 | 2009 | 2010 |
|----------|--------------|------|------|------|------|------|------------|------|------|------|
| Pinellas | 0 | 1 | 0 | 0 | 1 | 0 | 0 | 1 | 0 | 1 |
| Pasco | 0 | 0 | 0 | 0 | 0 | 0 | 0 | 0 | 1 | 1 |
| Total | 0 | 1 | 0 | 0 | 1 | 0 | 0 | 1 | 1 | 2 |
| | ID'd 6/26/07 | | | | | | ID'd 05/10 | | | |

2005**#5050078**

Date Found: 1/12/2005

Location Found: 44000 Block of U.S. 19 North, Tarpon Springs - Skeletal remains found in wooded area

Race: White (estimated)

Gender: Male (estimated)

Age: 40 - 55 (estimated)

Height: 5' 8" - 6' 3" (estimated)

Weight: Unknown

Hair Color: Unknown

Eye Color: Unknown

Law Enforcement Agency: Tarpon Springs Police Department

Agency Case #: 05-142



Unidentified Persons cont.....**2009****#5091701**

Date Found: 11/20/2009
Location Found: 11721 U.S. Hwy 19, Port Richey, FL 34668 (Pasco County, Wooded area)
Race: White
Gender: Male
Age: 39 - 65
Height: 5' 11"
Weight: unk.
Hair Color: unk.
Eye Color: unk.

Law Enforcement Agency: Pasco County Sheriff's Office

Agency Case #: 09-68244

Other Information: Unidentified white male was found in a wooded area near the USA Flea Market in Port Richey, FL. Decedent was decomposing and partially burned. Transients are known to Believed to have died within 1 month or less of being found.

Clothing: Dark colored Joe Boxer underwear/pants/shorts size Large. Light colored shirt

NamUs #: UP 6598 <https://identifyus.org/cases/6598>

NCIC Unidentified #: U100023034



<https://identifyus.org/cases/6598>

Unidentified Persons cont.....**2010****#5100121**

Date Found: 1/24/2010

Location Found: Wooded area about 2 miles Southeast of Lumberton Road and County Road 54, Zephyrhills, FL
Upper Hillsborough Forest
GPS coordinates: 28-14.386 North at 82-7.130 West

Race: White

Gender: Male

Age: 35 - 65

Height: 5' 9" - 5' 11" (estimated)

Weight: unk.

Hair Color: unk.

Eye Color: unk.

Law Enforcement Agency: Pasco County Sheriff's Office

Agency Case #: 10-4159

Other Information: Unidentified skeletal remains of a white male were found in a wooded area about 2 miles Southeast of CR 54 in the Upper Hillsborough Forest in Eastern Pasco County. It is likely the remains were on the ground surface for significantly more than 6 months. Healed fractures are present on the nasal bones and right arm.

Clothing: None

NamUs #: UP 7247 <https://identifyus.org/cases/7247>

NCIC Unidentified #: U370021401

<https://identifyus.org/cases/7247>

Unidentified Persons cont.....

2010

#5101956

Date Found: 12/29/2010

Location Found: Wooded area about 50 feet East of 3631 131st Avenue North, Pinellas Park, FL

Race: White

Gender: Male

Age: pending

Height: pending

Weight: unk.

Hair Color: unk.

Eye Color: unk.

Law Enforcement Agency: Pinellas County Sheriff's Office

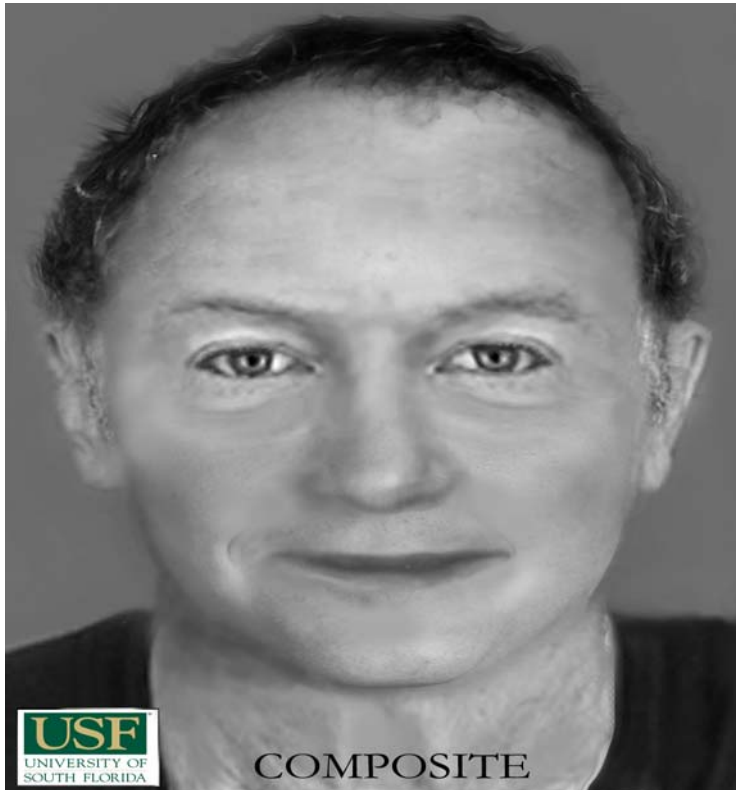
Agency Case #: SO10-380301

Other Information: Unidentified skeletal remains of a white male were found in a wooded area about 50 feet East of a business located at 3631 131st Avenue North, Pinellas Park, FL.

Clothing: Tan jacket, blue-gray boxer shorts, a portion of jeans pants pocket, and a blue clog-type

NamUs #: Pending

NCIC Unidentified #: Pending



| |
|-----------------------------|
| INDIGENT / UNCLAIMED |
|-----------------------------|

Medical Examiner Cases Released as Indigent/Unclaimed *

| | 2005 | 2006 | 2007 | 2008 | 2009 | 2009 | 2010 |
|---------------|------|------|------|------|------|------|------|
| Pinellas | 28 | 39 | 39 | 44 | 45 | 45 | 58 |
| Pasco | 4 | 11 | 17 | 24 | 20 | 20 | 12 |
| Total: | 32 | 50 | 56 | 68 | 65 | 65 | 70 |

* Only reflects Medical Examiner cases, not all District deaths. May have later been determined to not be indigent or unclaimed.

| |
|------------------------------------|
| Organ & Tissue Donation |
|------------------------------------|

| | 2007 | 2008 | 2009 | 2010 |
|-------------------|------|------|------|------|
| Organ Donations | 29 | 28 | 37 | 25 |
| Tissue Donations | 55 | 48 | 51 | 28 |
| Corneal Donations | 90 | 96 | 143 | 104 |

* Only reflects the number of organ and/or tissue donations for Medical Examiner cases, not all District deaths.

| |
|--------------------|
| Exhumations |
|--------------------|

| | 2006 | 2007 | 2008 | 2009 | 2010 |
|--------------|------|------|------|------|------|
| Pinellas | 0 | 0 | 0 | 0 | 4 |
| Pasco | 0 | 0 | 0 | 0 | 2 |
| Total | 0 | 0 | 0 | 0 | 6 |