

MEDICAL EXAMINER
District Six
Pasco & Pinellas Counties



10900 Ulmerton Road
Largo, FL 33778
727-582-6800
(Fax 727-582-6820)
www.co.pinellas.fl.us/forensics

YEAR 2007

MEDICAL EXAMINER
ANNUAL REPORT

TABLE OF CONTENTS

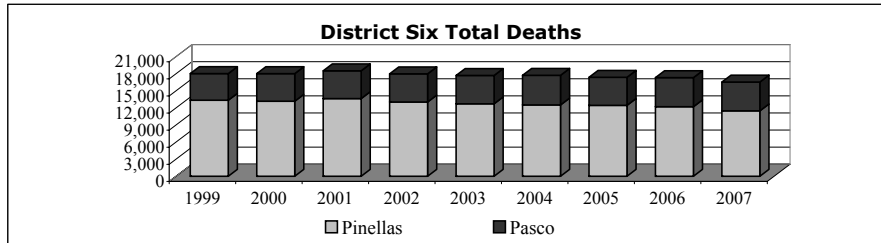
Section:	Page #:
Population, District Deaths, Cases Accepted	1
Workload by Type of Examination	2
Scenes Investigated, Persons Transported	2
Deaths By Manner of Death	3
Homicide Investigations	4
Suicide Investigations	5
Accidental Deaths, Motor Vehicle Deaths	6 - 8
Accidental Deaths, Non-Motor Vehicle Related	9
Infant Deaths	10 - 11
Infant & Child Deaths (age 1-17)	12
Drowning Deaths	13
Toxicology	14
Unidentified Persons	15 - 16
Indigent / Unclaimed Persons	17
Organ & Tissue Donation	17

	1999	2000	2001	2002	2003	2004	2005	2006	2007
Population *									
Pinellas	917,331	923,308	930,602	935,274	941,435	944,966	947,744	924,413	917,437
Pasco	337,348	346,882	354,196	364,900	378,085	392,507	406,857	450,171	462,715
Total	1,254,679	1,270,190	1,284,798	1,300,174	1,319,520	1,337,473	1,354,601	1,374,584	1,380,152

* SOURCE: Bureau of Economic and Business Research at University of Florida (estimated permanent population).

	1999	2000	2001	2002	2003	2004	2005	2006	2007
District Deaths *									
Pinellas	13,343	13,166	13,635	13,037	12,718	12,518	12,447	12,207	11,484
Pasco	4,683	4,851	4,878	4,944	4,975	5,201	4,926	5,108	5,053
Total	18,026	18,017	18,513	17,981	17,693	17,719	17,373	17,315	16,537

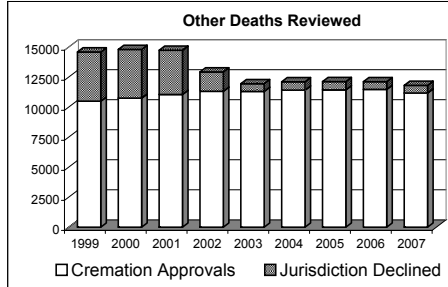
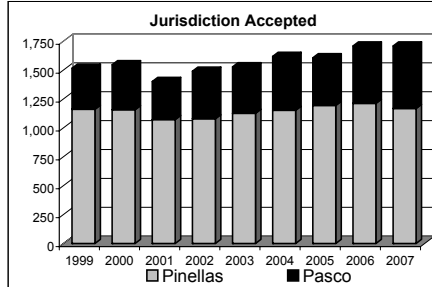
* SOURCE: Office of Vital Statistics, Florida Department of Health



	1999	2000	2001	2002	2003	2004	2005	2006	2007
Cases Accepted									
Pinellas	1,161	1,157	1,072	1,079	1,126	1,152	1,194	1,212	1,168
Pasco	355	389	329	411	402	466	412	496	540
Total	1,516	1,546	1,401	1,490	1,528	1,618	1,606	1,708	1,708

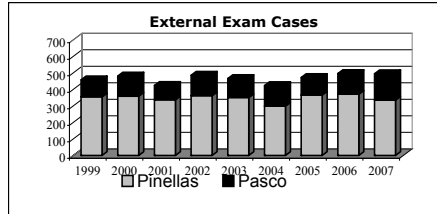
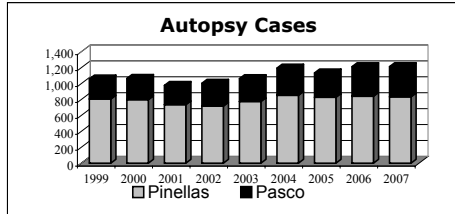
	1999	2000	2001	2002	2003	2004	2005	2006	2007
Cremation Approvals									
Pinellas	8,122	8,242	8,620	8,343	8,235	8,190	8,297	8,194	7,862
Pasco	2,622	2,813	2,886	2,975	3,074	3,224	3,140	3,282	3,309
Total	10,493	10,744	11,055	11,318	11,309	11,414	11,437	11,476	11,171

	1999	2000	2001	2002	2003	2004	2005	2006	2007
Jurisdiction Declined									
Pinellas	2,965	2,682	1,035	1,146	490	528	499	471	452
Pasco	1,092	997	461	464	151	169	187	169	188
Total	4,100	4,057	3,679	1,610	641	697	686	640	640



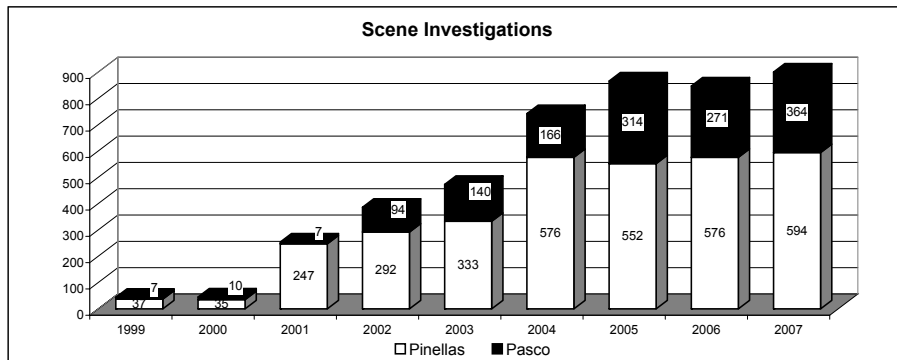
WORKLOAD BY TYPE OF EXAMINATION:

	1999	2000	2001	2002	2003	2004	2005	2006	2007
Autopsies									
Pinellas	806	798	735	717	775	853	828	841	833
Pasco	252	267	242	287	287	342	306	371	380
Total	1,058	1,065	977	1,004	1,062	1,195	1,134	1,212	1,213
External Exams									
Pinellas	355	359	337	362	351	299	366	371	335
Pasco	103	122	87	124	115	124	106	125	160
Total	458	481	424	486	466	423	472	496	495

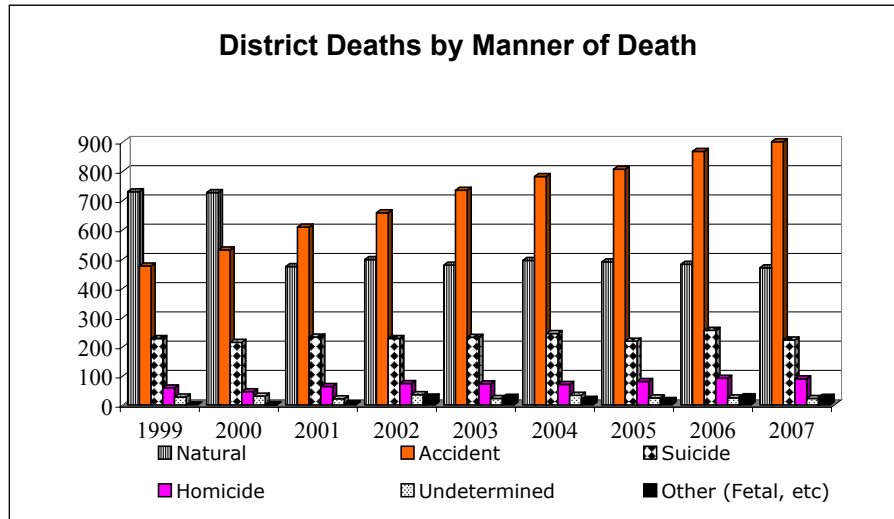


Decedent Transportation	2004	2005	2006	2007
Pinellas				
Medical Examiner Office	1143	1180	1202	1153
Life Link	5	11	10	14
Other	6	10	10	24
Total Pinellas	1154	1201	1222	1191
Pasco				
Medical Examiner Office	465	411	495	539
Life Link	0	1	2	1
Other	3	4	1	1
Total Pasco	468	416	498	541
District Total Transported	1,622	1,617	1,720	1,732

Scene Investigations	1999	2000	2001	2002	2003	2004	2005	2006	2007
Pinellas	37	35	247	292	333	576	552	576	594
Pasco	7	10	94	140	166	314	271	364	
Total	44	45	254	386	473	742	866	847	958



District Deaths by Manner of Death	1999	2000	2001	2002	2003	2004	2005	2006	2007
Natural	729	726	473	497	478	494	489	481	469
Accident	475	530	608	657	734	781	806	867	920
Suicide	227	214	232	227	231	244	218	255	222
Homicide	58	45	63	73	72	70	80	91	89
Undetermined	27	30	21	35	22	33	24	24	22
Other (Fetal, etc)	0	1	4	27	26	19	15	28	26
Total	1,516	1,546	1,401	1,516	1,563	1,641	1,632	1,746	1,748



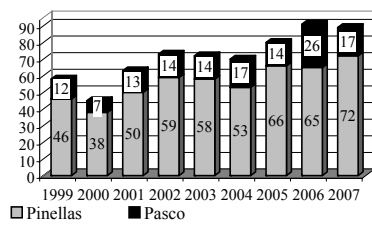
TOTAL VIOLENT DEATHS	1998	1999	2000	2001	2002	2003	2004	2006	2007
	725	787	819	924	992	1,059	1,128	1,237	1,253

HOMICIDE DEATH INVESTIGATIONS

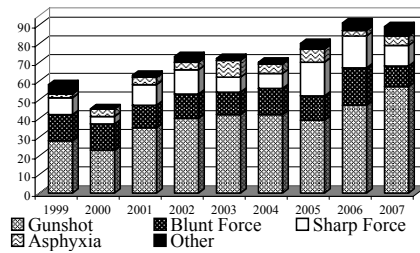
Homicides	1999	2000	2001	2002	2003	2004	2005	2006	2007
Pinellas	46	38	50	59	58	53	66	65	72
Pasco	12	7	13	14	14	17	14	26	17
Total	58	45	63	73	72	70	80	91	89

	1999	2000	2001	2002	2003	2004	2005	2006	2007
Gunshot	28	23	35	40	42	42	39	47	57
Blunt Force	14	14	12	13	12	14	13	20	11
Sharp Force	9	4	11	13	8	8	18	17	11
Asphyxia	2	4	4	4	9	5	7	3	5
Other	5	0	1	3	1	1	3	4	5

**Homicide Death
Investigations**

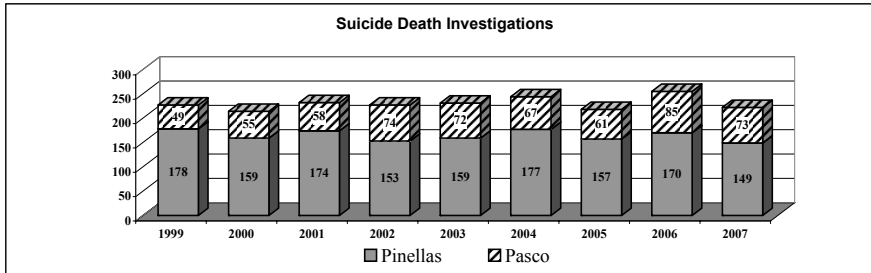


Homicide Method of Injury



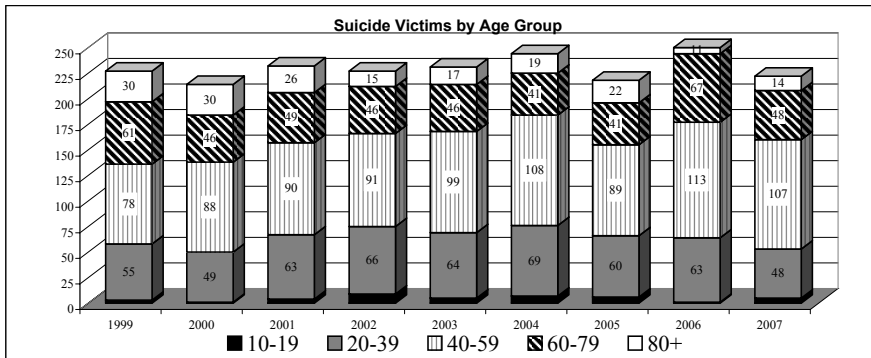
SUICIDE DEATH INVESTIGATIONS

	1999	2000	2001	2002	2003	2004	2005	2006	2007
Pinellas	178	159	174	153	159	177	157	170	149
Pasco	49	55	58	74	72	67	61	85	73
Total	227	214	232	227	231	244	218	255	222



SUICIDE GENDER	1999	2000	2001	2002	2003	2004	2005	2006	2007
Male	178	175	177	174	174	173	172	188	165
Female	49	39	55	53	57	71	46	67	57

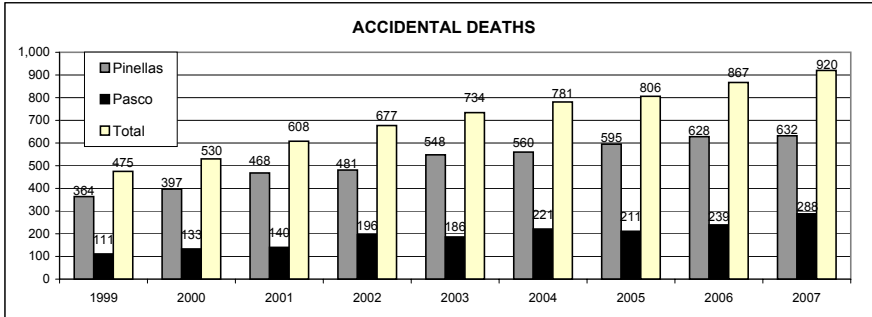
Age Group	1999	2000	2001	2002	2003	2004	2005	2006	2007
10-19	3	1	4	9	5	7	6	1	5
20-39	55	49	63	66	64	69	60	63	48
40-59	78	88	90	91	99	108	89	113	107
60-79	61	46	49	46	46	41	41	67	48
80+	30	30	26	15	17	19	22	11	14
Total	227	214	232	227	231	244	218	255	222



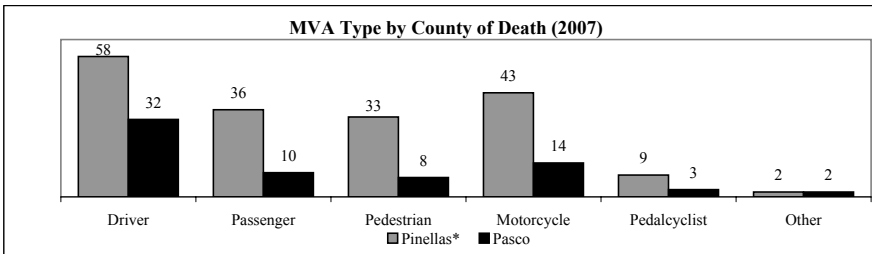
ACCIDENTAL DEATH INVESTIGATIONS

TOTAL ACCIDENTAL DEATHS (Motor Vehicle Accident (MVA) & Non-Motor Vehicle Accident)

	1999	2000	2001	2002	2003	2004	2005	2006	2007
Pinellas	364	397	468	481	548	560	595	628	632
Pasco	111	133	140	196	186	221	211	239	288
Total	475	530	608	677	734	781	806	867	920



MOTOR VEHICLE DEATHS



Traffic Fatalities by County of Death for Year 2007

* Includes victims that sustained injuries in counties other than Pinellas, but were taken to Pinellas hospitals and eventually died in Pinellas from injuries sustained in the other county.

	Pinellas*	Pasco	District
Driver	58	32	90
Passenger	36	10	46
Pedestrian	33	8	41
Motorcycle	43	14	57
Pedalcyclist	9	3	12
Other	2	2	4
Totals:	181	69	250

	1999	2000	2001	2002	2003	2004	2005	2006	2007
Driver	87	105	96	120	84	76	86	85	90
Passenger	41	41	52	29	33	29	44	38	46
Pedestrian	55	70	49	63	57	72	63	53	42
Motorcycle	14	24	21	25	37	36	32	42	57
Pedalcyclist	13	13	19	9	16	23	18	13	12
Other	10	1	10	4	9	6	3	18	4
Total	220	254	247	250	236	242	246	249	251

MOTOR VEHICLE DEATHS CONT..

DRIVERS	1999	2000	2001	2002	2003	2004	2005	2006	2007
Less than 20 Years of Age	8	10	9	7	8	3	5	5	10
20-29	9	11	10	21	16	15	12	16	17
30-39	14	11	15	17	14	6	6	9	6
40-49	6	14	14	13	11	13	10	16	11
50-59	8	15	3	13	10	8	13	9	18
60-69	10	9	10	12	10	4	9	7	7
70-79	12	17	18	13	5	8	14	11	6
80-89	19	15	16	21	8	18	17	10	12
90+	1	3	1	3	2	1	0	2	3
Totals	87	105	96	120	84	76	86	85	90

MOTOR VEHICLE FATALITY TYPE BY COUNTY OF INJURY**Pinellas County**

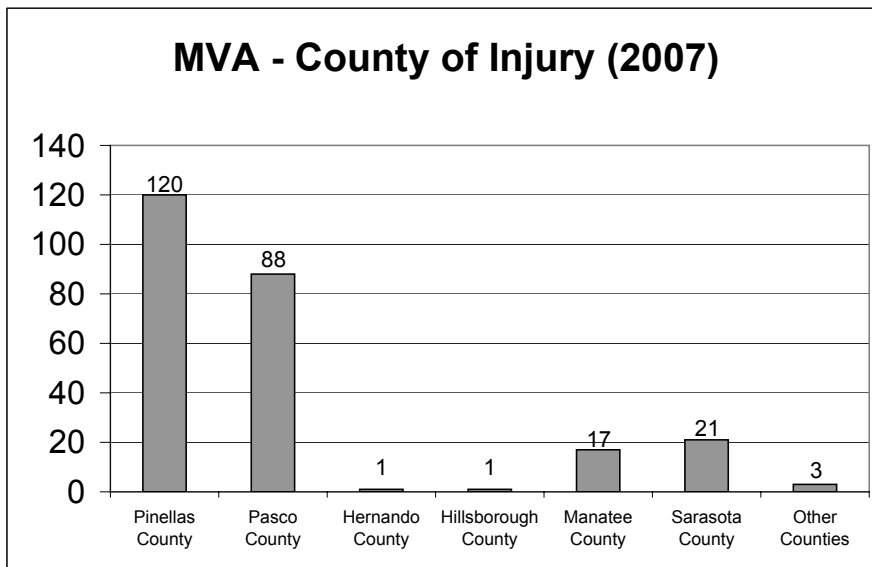
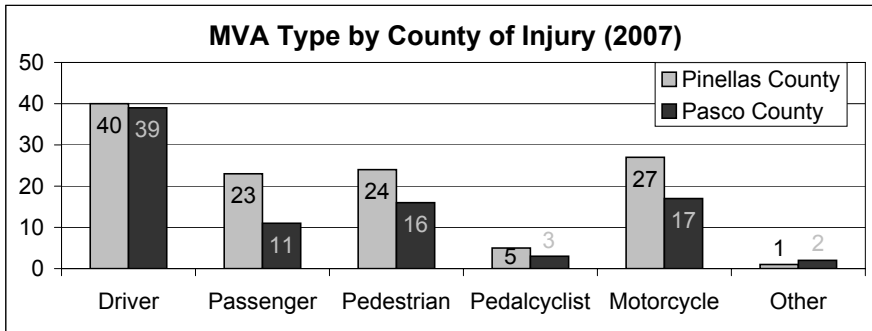
LOCATION	Driver	Passenger	Pedestrian	Pedalcyclist	Motorcycle	Other	Total
US 19	6	1	6	0	2	0	15
ALT 19	1	0	3	1	1	0	6
I-275	7	6	0	0	4	0	17
49th St. SP	2	2	2	0	2	0	8
McM-Booth	0	1	1	0	0	0	2
Gulf Blvd	0	0	0	0	0	0	0
Belcher	2	0	0	0	2	0	4
Starkey/Keene	3	1	0	0	2	0	6
Ulmerton	5	1	2	0	1	0	9
SR 60 G-B	0	0	1	0	1	0	2
Pk./Gandy Blv	0	0	0	0	1	0	1
Curlew	0	0	0	0	0	0	0
All Others	14	11	9	4	11	1	50
Total	40	23	24	5	27	1	120

Pasco County

LOCATION	Driver	Passenger	Pedestrian	Pedalcyclist	Motorcycle	Other	Total
US 19	7	3	7	0	3	0	20
I-75	1	1	0	0	0	0	2
US 301	3	0	0	0	0	0	3
US 41	0	1	2	0	0	0	3
SR 52	0	1	0	0	4	1	6
SR 54	4	0	2	0	1	0	7
All Others	24	5	5	3	9	1	47
Total	39	11	16	3	17	2	88

Out of District Location

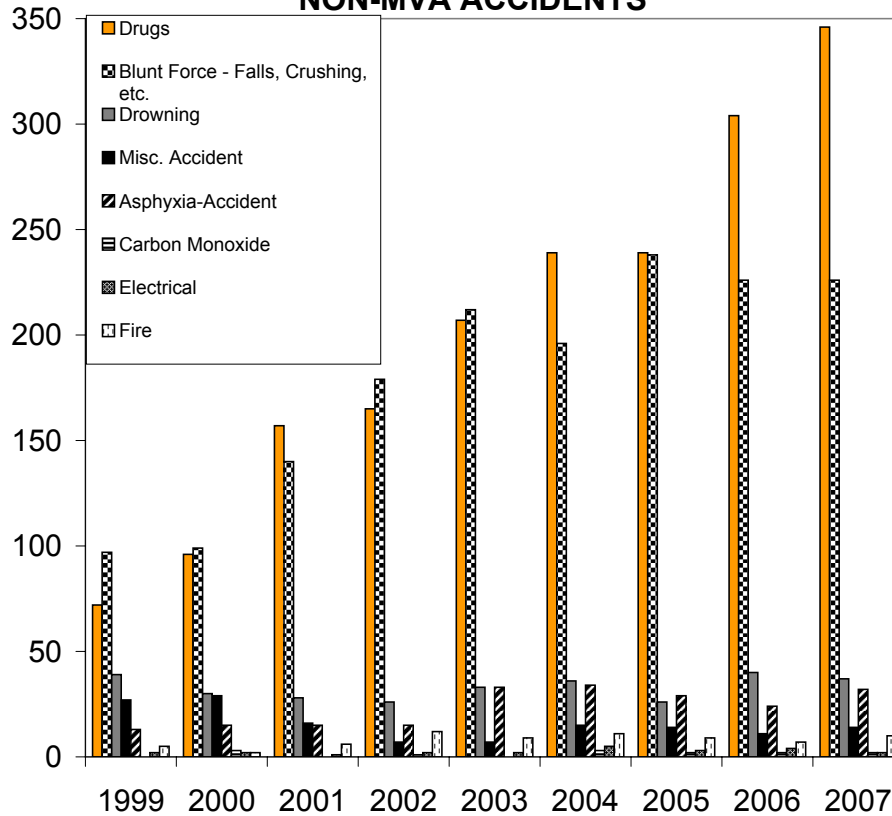
	Total
Hernando County	1
Hillsborough County	1
Manatee County	17
Sarasota County	21
Other Counties	3
Total	43



NON MOTOR VEHICLE RELATED ACCIDENTS

	1999	2000	2001	2002	2003	2004	2005	2006	2007
Drugs	72	96	157	165	207	239	239	304	346
Blunt Force - Falls, Crushing, etc.	97	99	140	179	212	196	238	226	226
Drowning	39	30	28	26	33	36	26	40	37
Misc. Accident	27	29	16	7	7	15	14	11	14
Asphyxia-Accident	13	15	15	15	33	34	29	24	32
Carbon Monoxide	0	3	0	1	0	3	2	2	2
Electrical	2	2	1	2	2	5	3	4	2
Fire	5	2	6	12	9	11	9	7	10
Total	255	276	363	363	503	539	560	618	669

NON-MVA ACCIDENTS



INFANT DEATHS										
---------------	--	--	--	--	--	--	--	--	--	--

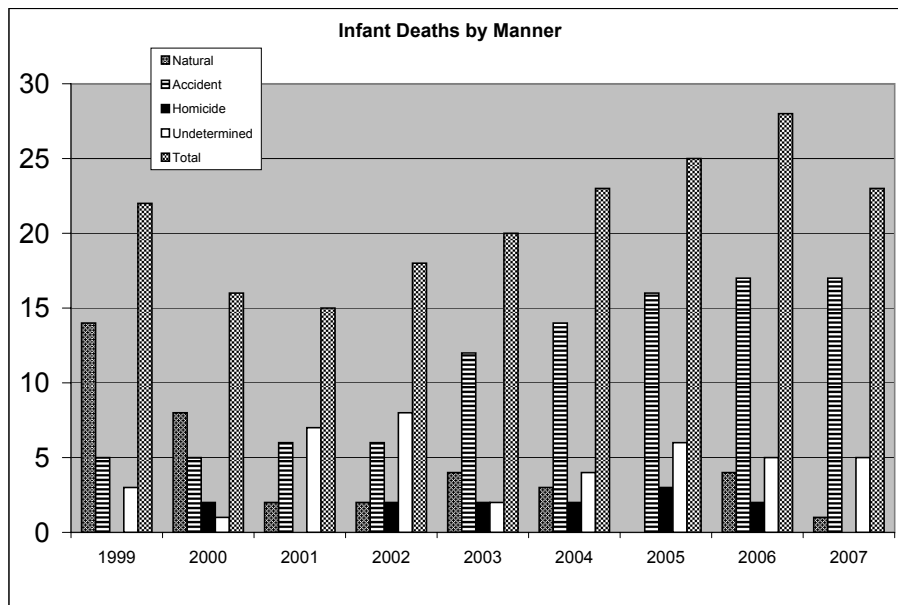
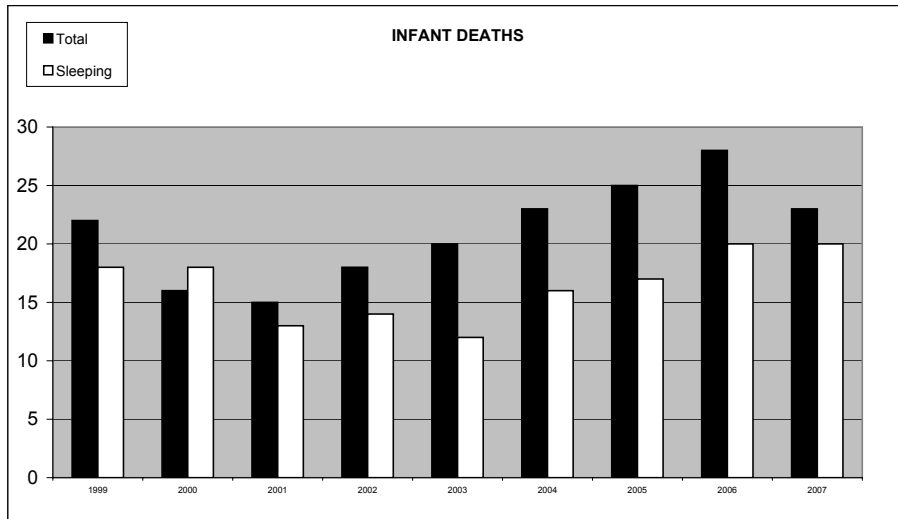
	1999	2000	2001	2002	2003	2004	2005	2006	2007
Total	22	16	15	18	20	23	25	28	23
Sleeping	18	18	13	14	12	16	17	20	20
% Sleeping	81.8%	112.5%	86.7%	77.8%	60.0%	69.6%	68.0%	71.4%	87.0%
Co-sleeping	9	6	2	7	5	3	11	9	13
Sleeping Alone Total	9	12	7	6	8	9	5	8	7
Alone on Stomach	6	8	4	4	6	7	3	6	4
Alone on Back	0	3	1	1	1	0	0	0	2
Alone Unknown	3	1	2	1	1	2	1	1	1
unknown/unclear					1		1	1	0
	1999	2000	2001	2002	2003	2004	2005	2006	2007
Natural	14	8	2	2	4	3	0	4	1
Accident	5	5	6	6	12	14	16	17	17
Homicide	0	2	0	2	2	2	3	2	0
Undetermined	3	1	7	8	2	4	6	5	5
Total	22	16	15	18	20	23	25	28	23

Of the 20 sleep associated infant deaths, **ONLY 2 of the infants died while reportedly sleeping in safe circumstances** (alone, supine on a device designed for infant sleeping). 18 infants were either co-sleeping on an adult bed, couch, floor and/or sleeping/found on their stomach.

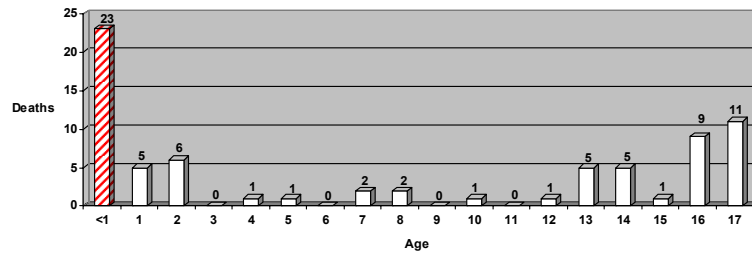
	1998	1999	2000	2001	2002	2003	2004	2005	2006	2007
SIDS *	6	7	7	0	0	0	0	0	0	0
Other Natural	6	7	1	2	2	4	3	0	4	1
Asphyxia - Accident	3	3	1	5	4	8	12	12	14	14
Blunt force - Accident	1	1	2	1	0	1	0	1	0	1
Other Accident	0	1	2	0	2	3	2	3	3	2
Blunt force - Homicide	1	0	2	0	2	1	1	2	0	0
Undetermined	2	3	1	7	8	2	4	6	5	5
Other Homicide						1	1	1	2	0

* Sudden Infant Death Syndrome (SIDS): the death of an infant less than one year of age which remains unexplained after thorough case investigation, including performance of a complete autopsy, examination of the death scene, and review of the clinical history. Thus, SIDS is a diagnosis by exclusion.

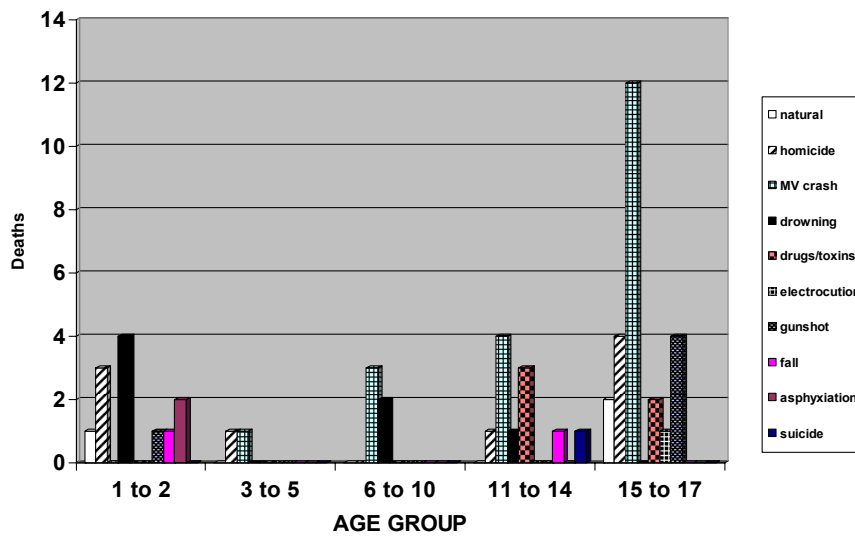
INFANT DEATHS CONT..



INFANT/CHILD DEATHS BY AGE (2007)

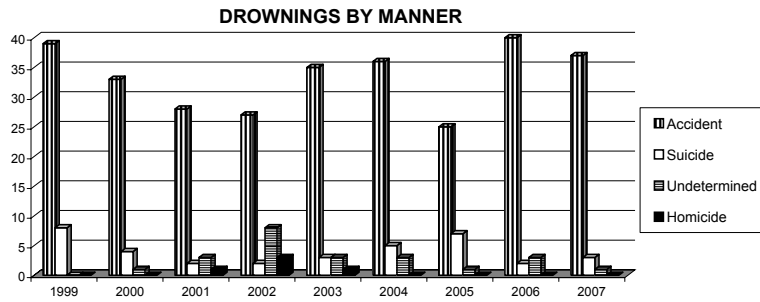


CHILD DEATHS BY TYPE (2007)



DROWNINGS BY MANNER OF DEATH

	1999	2000	2001	2002	2003	2004	2005	2006	2007
Accident	39	33	28	27	35	36	25	40	37
Suicide	8	4	2	2	3	5	7	2	3
Undetermined	0	1	3	8	3	3	1	3	1
Homicide	0	0	1	3	1	0	0	0	0



	1999	2000	2001	2002	2003	2004	2005	2006	2007
0-10	10	5	6	6	5	5	5	6	6
11-30	10	5	5	8	4	5	5	1	6
31-50	9	14	3	13	16	20	9	19	10
51-70	3	5	7	4	9	9	8	11	13
71+	15	9	7	9	7	5	7	8	6

DROWNING AGE 0-5 YEARS

Pool	6	9	4	4	4	4	5	5	4
Bathtub	0	0	1	0	0	0	0	1	0
Other	0	0	0	2	2	0	0	0	0

ACCIDENTAL DROWNING BY LOCATION

Swimming Pool	10	19	13	12	5	12	12	10	16
Lake/Pond	4	5	5	4	8	4	4	5	5
Gulf waters	5	9	8	6	6	7	12	5	6
Tampa Bay waters	4	6	3	1	1	5	1	7	5
Bathtub	3	0	4	0	2	2	1	6	2
Spa	0	1	1	2	0	1	2	4	1
Canal	1	3	2	2	1	1	2	3	1
River	0	1	1	1	2	0	1	0	0
Other Misc.	3	3	1	0	2	3	1	0	1
Total	25	39	32	28	27	35	36	40	37

TOXICOLOGY

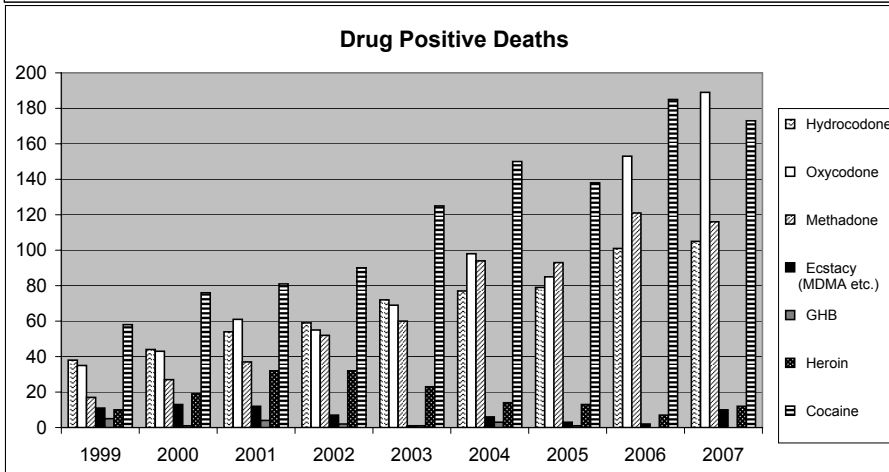
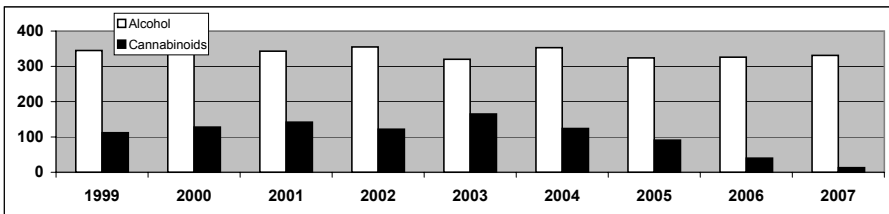
MEDICAL EXAMINER CASES WHERE TOXICOLOGY WAS PERFORMED

	2005	2006	2007
Cases submitted to Toxicology	1286	1401	1365
Cases where Toxicology was performed	998	1144	1070

MEDICAL EXAMINER CASES TESTING POSITIVE FOR DRUGS

	1999	2000	2001	2002	2003	2004	2005	2006	2007
Alcohol	345	374	343	355	320	353	324	326	331
Cannabinoids	112	128	142	122	165	124	91	40	13

	1999	2000	2001	2002	2003	2004	2005	2006	2007
Hydrocodone	38	44	54	59	72	77	79	101	105
Oxycodone	35	43	61	55	69	98	85	153	189
Methadone	17	27	37	52	60	94	93	121	116
Ecstasy (MDMA etc.)	11	13	12	7	1	6	3	2	10
GHB	5	1	4	2	1	3	1	0	0
Heroin	10	19	32	32	23	14	13	7	12
Cocaine	58	76	81	90	125	150	138	185	173



UNIDENTIFIED PERSONS

Agency Case #: 99-17169

#1991145

Date Found: 10/5/1999
Location Found: 1800 66th Street, St. Petersburg - Possible transient found at bus shelter
Race: White
Gender: Male
Age: 30 - 50 (estimated)
Height: 5' 11"
Weight: 173
Hair Color: Brown / Dark Blond
Eye Color: Blue
Law Enforcement Agency: St. Petersburg Police Department
Agency Case #: 99-53861

2002**#5020945**

Date Found: 8/11/2002
Location Found: 4201 38th Avenue South, St. Petersburg - Adult human femur found in canal by fisherman
Race: Unknown
Gender: Male (estimated)
Age: Unknown
Height: Unknown
Weight: Unknown
Hair Color: Unknown
Eye Color: Unknown
Law Enforcement Agency: St. Petersburg Police Department
Agency Case #: 02-51458
******IDENTIFIED**** 6/26/2007 DNA Match in CODIS**

Unidentified Persons cont.....

2005

#5050078

Date Found: 1/12/2005

Location Found: 44000 Block of U.S. 19 North, Tarpon Springs - Skeletal remains found in wooded area

Race: White (estimated)

Gender: Male (estimated)

Age: 40 - 55 (estimated)

Height: 5' 8" - 6' 3" (estimated)

Weight: Unknown

Hair Color: Unknown

Eye Color: Unknown

Law Enforcement Agency: Tarpon Springs Police Department

Agency Case #: 05-142



INDIGENT / UNCLAIMED

Medical Examiner Cases Released as Indigent/Unclaimed *

	2005	2006	2007
Pinellas	28	39	39
Pasco	4	11	17
Total	32	50	56

* Only reflects Medical Examiner cases, not all District deaths. May have later been determined to not be indigent or unclaimed.

Organ & Tissue Donation

	2007
Organ Donations	29
Tissue Donations	55
Corneal Donations	90

* Only reflects the number of organ and/or tissue donations for Medical Examiner cases, not all District deaths.

Exhumations

	2006	2007
Pinellas	0	0
Pasco	0	0
Total	0	0