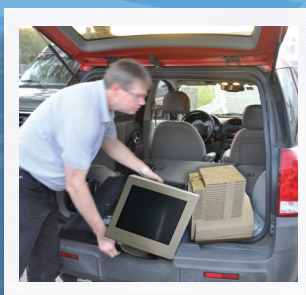


IF YOU **work**  
IN PINELLAS COUNTY  
YOU WORK IN A **watershed**



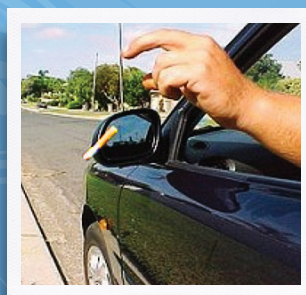
**Make a Difference!**

**Electronics**



**To HEC3**

**Cigarettes**



**Off the road**

**Businesses**



**Going green**



Watershed, where we **LiveWorkPlay.**

[www.pinellascounty.org/environment](http://www.pinellascounty.org/environment)



Pinellas County complies with the Americans with Disabilities Act. To obtain accessible formats of this document, please call (727) 464-4880/TDD (727) 464-4062.