

Detailed information on following pages

Tuesday 9/04/2018, collected and analyzed by Pinellas County.

Fort De Soto Gulf Pier – Medium (low end of range)
Fort De Soto Ferry Pier – Medium (low end of range)
Pass-A-Grill Beach – Medium (low end of range)
Gulfport Pier – Not Present
Redington Beach at La Contessa Pier – Not Present
Sunset Beach Treasure Island – Low (*updated 9/5/2018*)
Sunshine Beach south of John’s Pass – Medium (low end of range)
Madeira Beach – Very Low
Redington Shores - Background
Indian Rocks Beach – Not Present

Wednesday 9/05/2018, collected and analyzed by Pinellas County.

Fort De Soto Gulf Pier – Medium (low end of range)
Fort De Soto Ferry Pier – Medium
Pass-A-Grill Beach – Very Low
Gulfport Pier – Very Low
Redington Beach at La Contessa Pier – Low
Sunset Beach Treasure Island – Medium
Sunshine Beach south of John’s Pass – Medium
Madeira Beach – Medium (low end of range)
Redington Shores – Very Low
Indian Rocks Beach – Low

Thursday 9/06/2018, collected and analyzed by Pinellas County.

Fort De Soto Gulf Pier – Not Present (very strong incoming tide)
Fort De Soto Ferry Pier – Medium
Pass-A-Grill Beach – Low
Gulfport Pier – Low
Redington Beach at La Contessa Pier – Very Low
Sunset Beach Treasure Island – Low
Sunshine Beach south of John’s Pass – Medium
Madeira Beach – Low
Redington Shores – Not Present
Indian Rocks Beach – Low

Description	<i>Karenia brevis</i> abundance	Possible effects (<i>Karenia brevis</i> only)
NOT PRESENT - BACKGROUND	0 - 1,000 cells/L	no effects anticipated
VERY LOW	> 1,000 - 10,000 cells/L	possible respiratory irritation; shellfish harvesting closures \geq 5,000 cells/L
LOW	> 10,000 - 100,000 cells/L	respiratory irritation; possible fish kills; probable detection of surface chlorophyll by satellites at upper range of cell abundance
MEDIUM	> 100,000 - 1,000,000 cells/L	respiratory irritation; probable fish kills; detection of surface chlorophyll by satellites
HIGH	> 1,000,000 cells/L	as above, plus water discoloration

Monitoring Updates:

Pinellas County Environmental Management will be conducting additional monitoring to supplement FWC's current efforts. Reports will be updated daily or as soon as possible when monitoring results are available and will also be published to the [Pinellas County Environmental News Facebook Page](#).

Park Updates:

Parks and Conservation Resources staff are monitoring conditions at County Parks along the Gulf and in Tampa Bay. For information on other beaches visit <https://visitbeaches.org/>

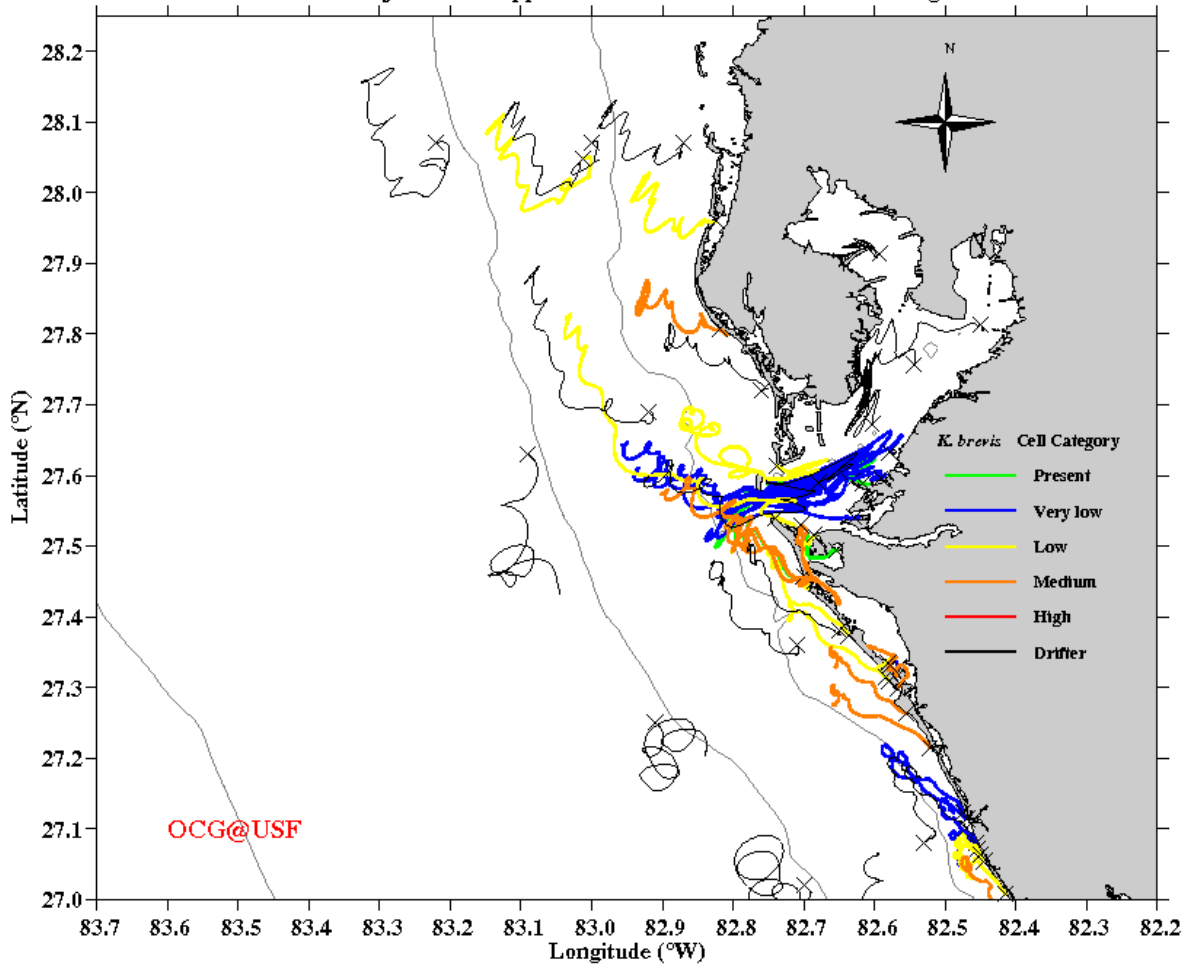
- Fred Howard Park – No red tide conditions observed.
- Sand Key Park – No red tide conditions observed.
- Ft. De Soto – No red tide conditions observed.

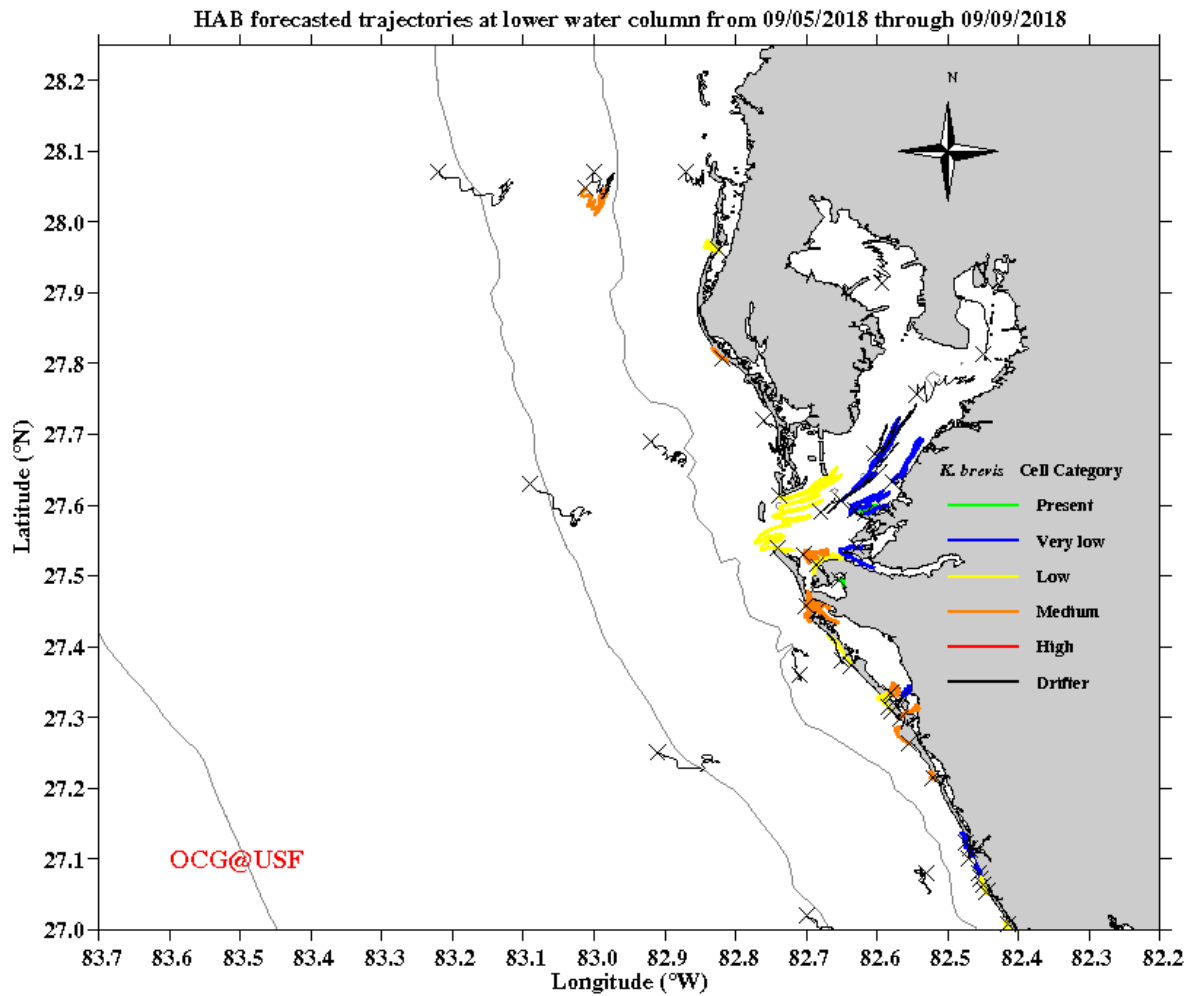
Currents:

USF's current 5 day trajectory predicts net northwestern movement of surface waters and net southeastern transport of subsurface waters in most areas over the next three days.

Current images are shown below and can be observed at http://ocgweb.marine.usf.edu/hab_tracking/HAB_trajectories.html

HAB forecasted trajectories at upper water column from 09/05/2018 through 09/09/2018





There are several links on our [website](#) to other agencies monitoring the red tide situation including:

FWC: <http://myfwc.com/REDTIDESTATUS>

Mote Marine: <http://coolgate.mote.org/beachconditions/>