



Pinellas County Mosquito
Control and Vegetation
Management

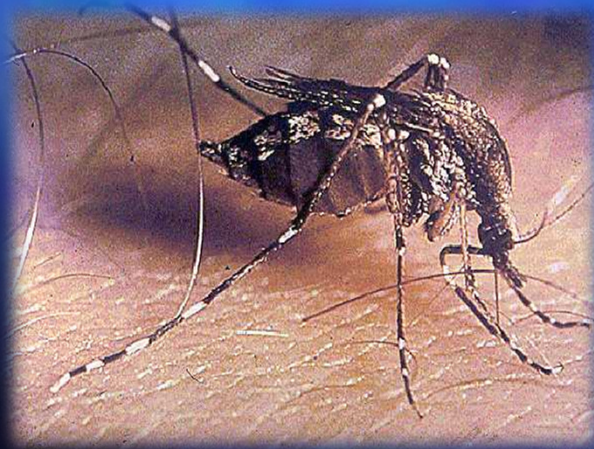


<https://www.youtube.com/watch?v=oKcICcCP4P4>

A small yellow dot is located in the lower-left quadrant of the image.

Mosquito Biology

- Diptera
- Life cycle & why mosquitoes bite
- Habitat
- Species differentiation
 - Proboscis
 - Wings
 - Banding
- Feeding niches
- Flight ranges
- Lifespan



Speciation



Mansonia titillans



Aedes albopictus

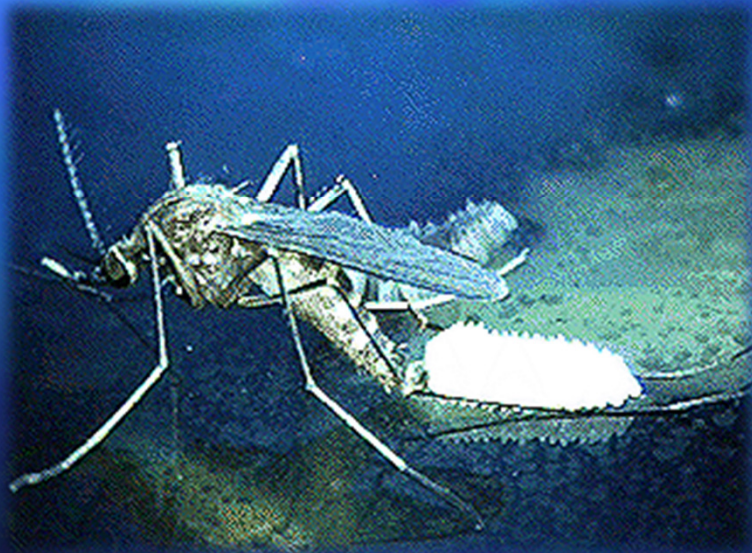
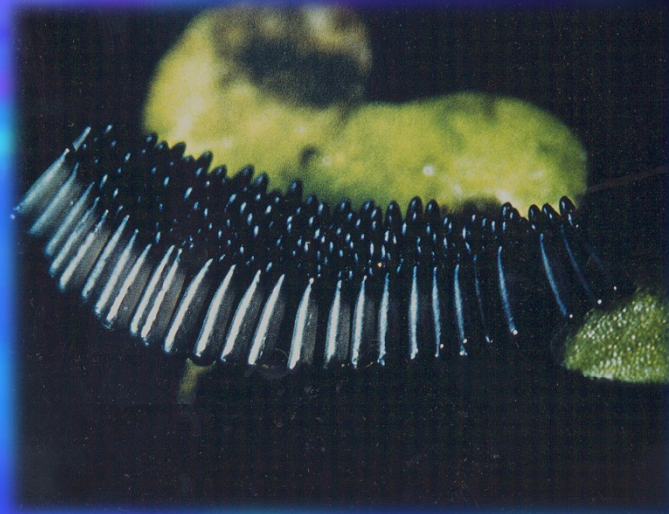
Aedes aegypti



Aedes taeniorhynchus

Eggs

- Permanent
- Floodwater



Larvae

- Siphons
- Instars
- Weakest link



Pupae

- Tumblers
- Respiratory trumpets



"Domestic" Mosquitoes

Door to door...

88% of citizen requests had some domestic contribution

- Planters
- Tires
- Buckets
- Tree-holes
- Ornamental bromeliads



Larviciding

- Dose-specific chemicals
- Contained area
- Oils
- Stomach toxins
- Growth inhibitors
- Fish



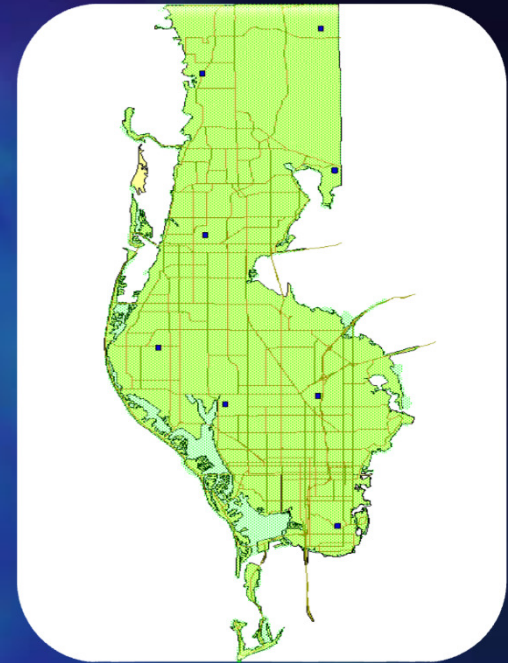
Adulticiding

- Hand fogging
- Truck fogging



Virus Detection

- Sentinel system
- Health Department
- Department of Agriculture
- FMEL & USF



Mosquito Control Mission

- To Protect public health!

From what?

- Arbovirus vectors ~ the Mosquito
- WNV, SLE, EEE, Dengue Fever, ChikV, Malaria, and the Zika Virus!

The End... or is it?

- Many thanks to all of you for this fantastic turn out.
- Please come visit our table!
- For future questions...
feel free to call us at (727)464-7503