



Proposed Surface Water Assessment for Unincorporated Pinellas County

Commercial Properties — ASSESSMENT EXAMPLES

Commercial property assessments are calculated* based on the total impervious area of the property, including buildings and parking lots. Properties may be eligible for up to a 75% reduction in their fee for onsite stormwater management facilities.

**based on digitized aerial photography*

GAS STATION

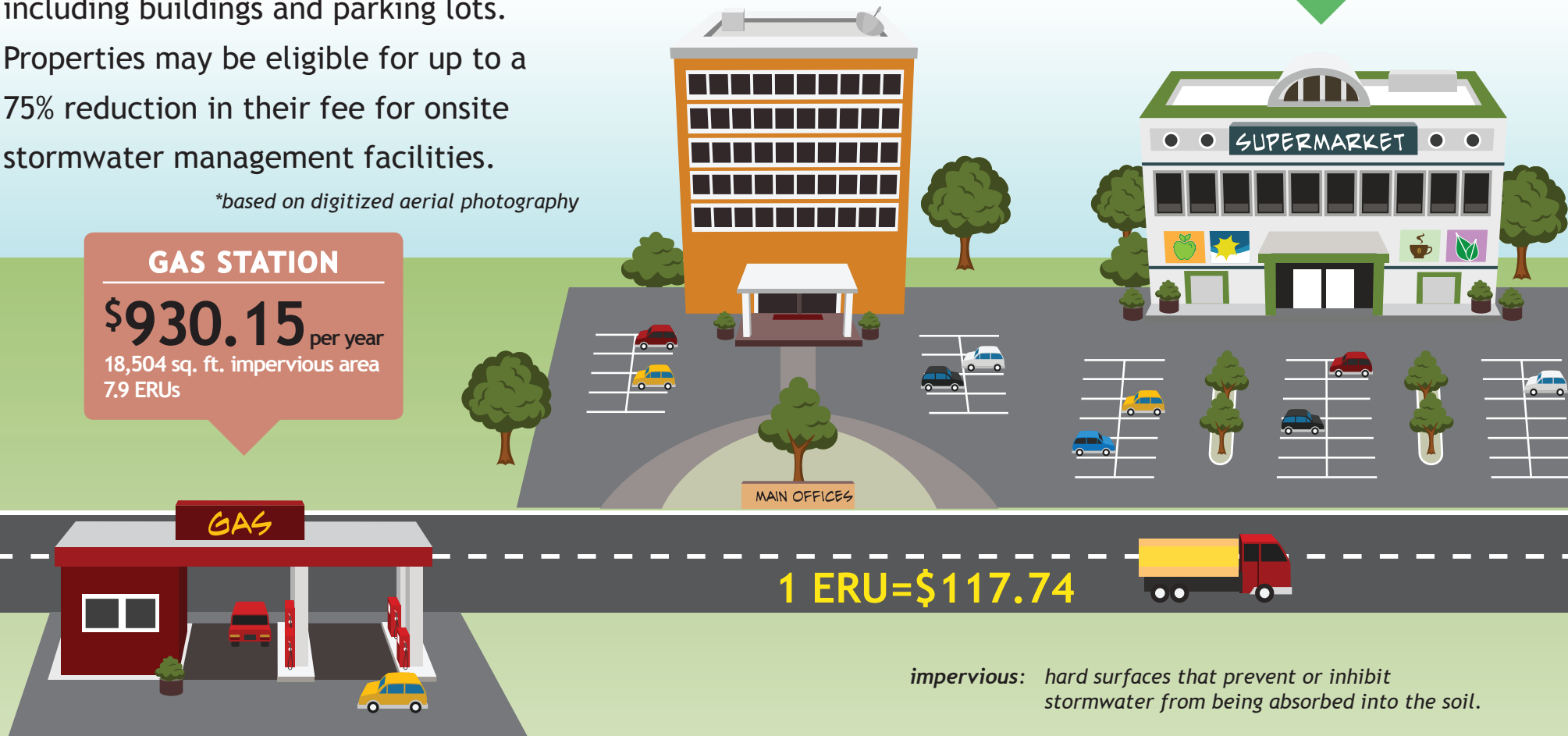
\$930.15 per year
18,504 sq. ft. impervious area
7.9 ERUs

OFFICE BUILDING

\$2,366.57 per year
40,050 sq. ft. impervious area
20.1 ERUs

SUPERMARKET

\$9,301.46 per year
184,858 sq. ft. impervious area
79 ERUs



1 ERU = \$117.74

impervious: hard surfaces that prevent or inhibit stormwater from being absorbed into the soil.