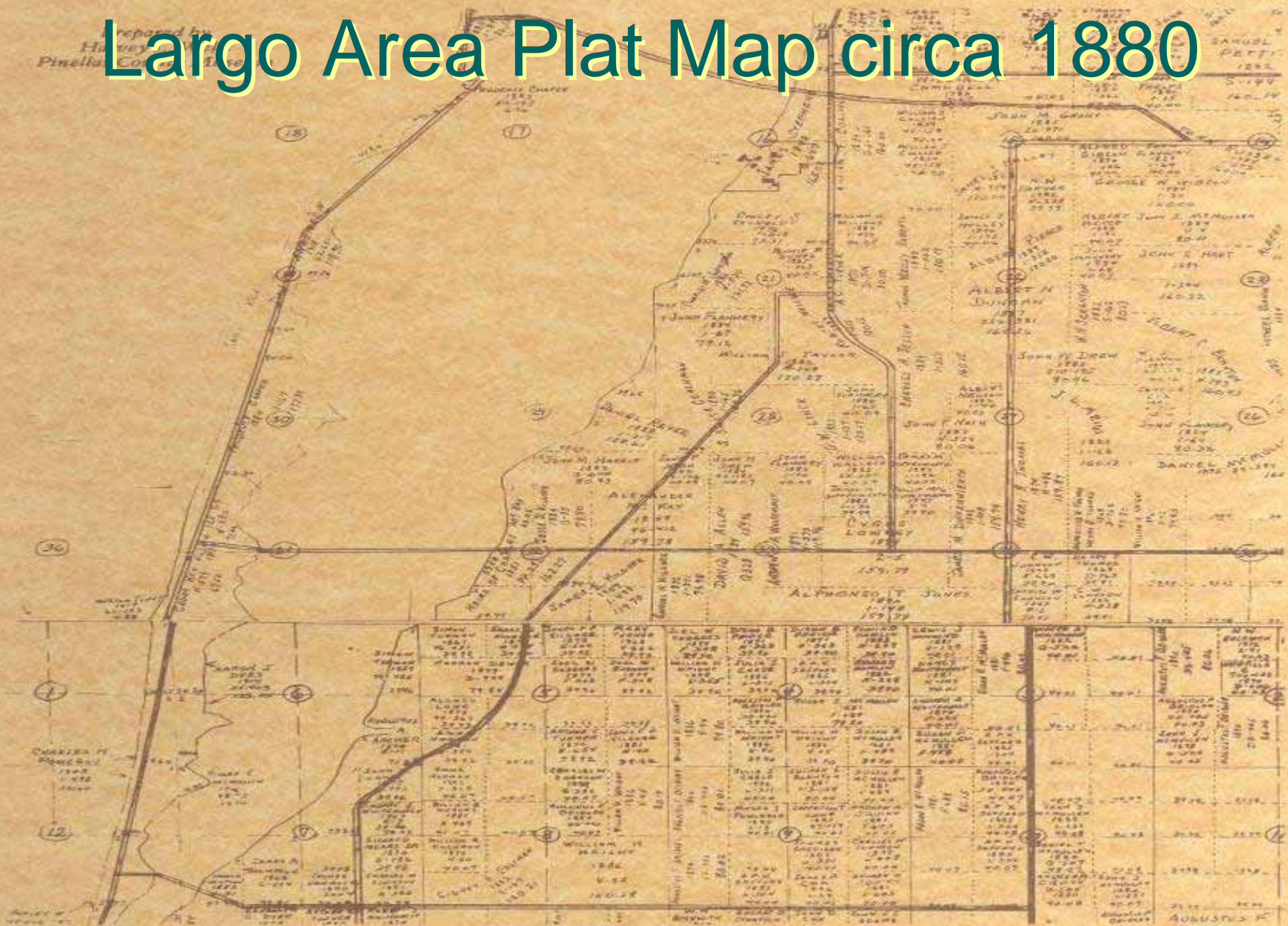


# St. Joseph Sound/Clearwater Harbor Area History 1880- present

# Largo Area Plat Map circa 1880



# Dr. Van Bidder in 1885 advocates the healthiness of West Hillsborough

- Dr. Van Bidder presents a report to the American Medical Society convention of 1885 advocating the very healthy climate of Peninsular Pinellas. The convention created the first underpinnings of tourism for the Pinellas area.

1888 Railroad service arrives at St.  
Joseph's Sound/Clearwater Harbor

# 1888 Large Scale Citrus Production Commences

- Major freeze 1897
- Major freeze 1899
- Major freeze 1962
- 1963 Citrus production quickly diminishes and suburban development fills the land vacated by agriculture.



# Bellevue Biltmore Hotel circa 1897

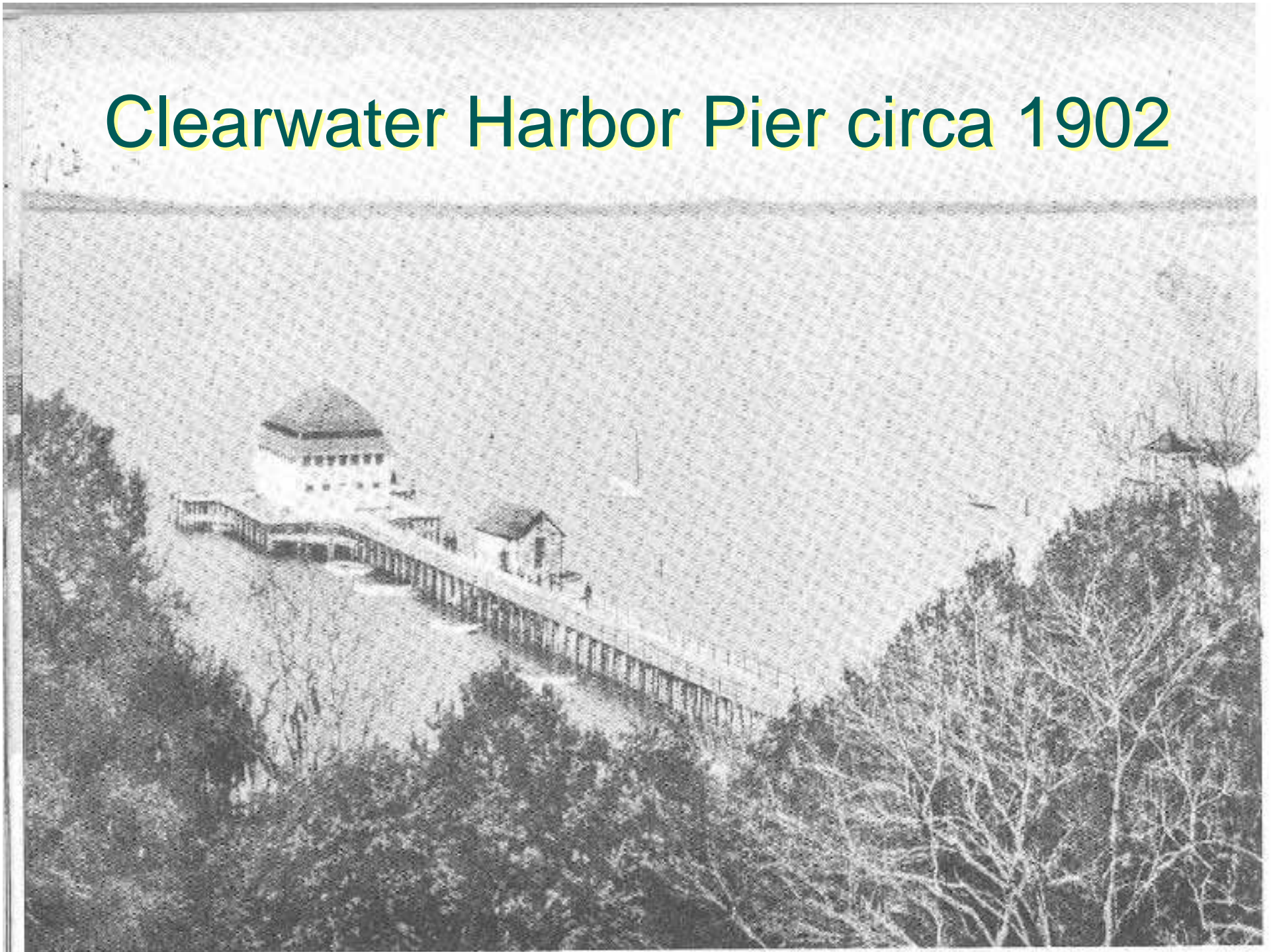




# Clearwater Harbor Pier circa 1902



# Clearwater Harbor Pier circa 1902







# Clearwater Harbor Pier 1908

- Transportation to St. Joseph Sound beaches is limited to boat ferry service.

In 1910 Congress Appropriates  
\$29,000 to Dredge Clearwater and  
Boca Ciega Bays for Navigation  
Purposes

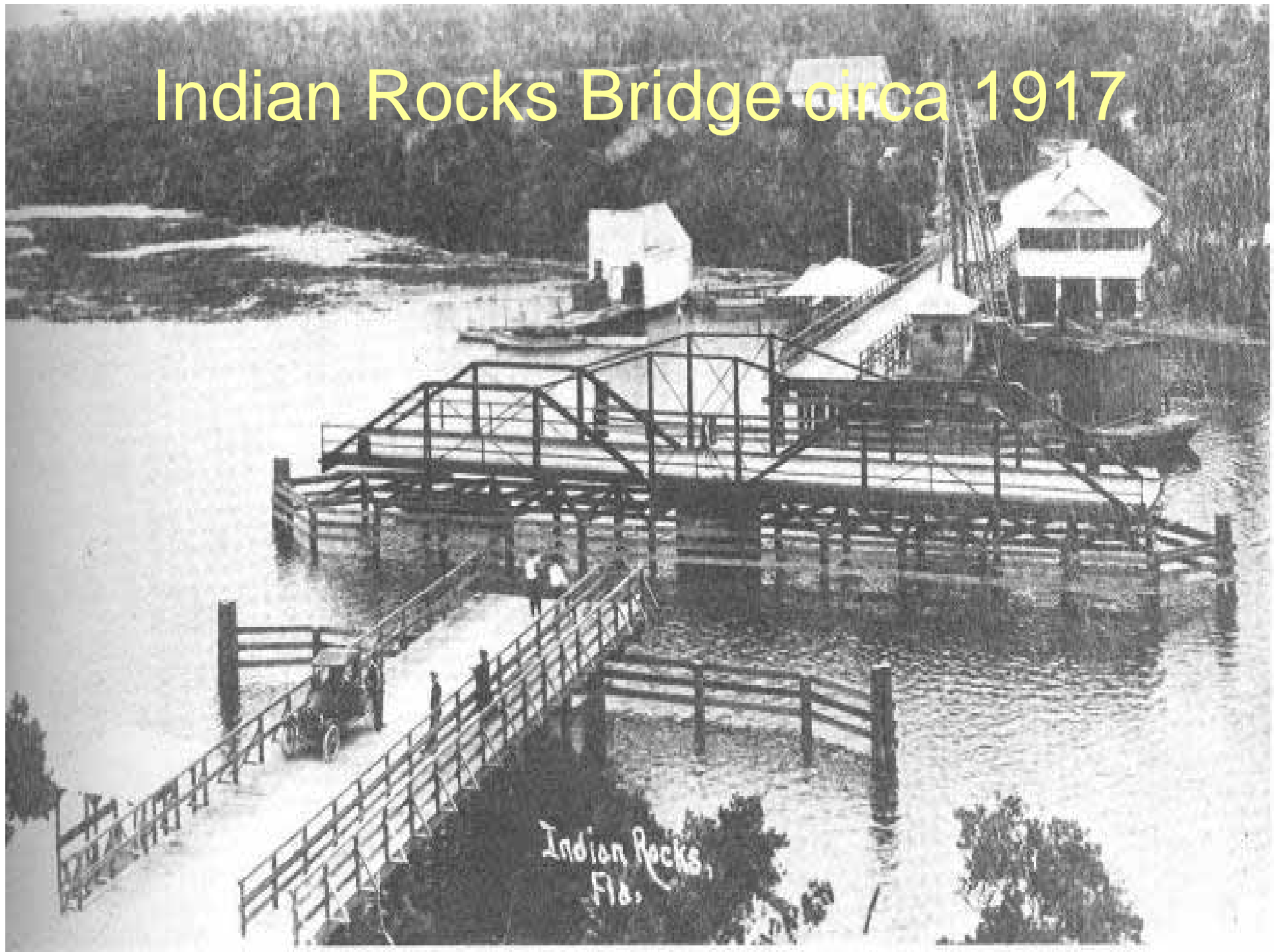


# Ferryboat to Indian Rocks Beach pre-1917





# Indian Rocks Bridge circa 1917





# Train Transportation Reaches Indian Rocks Beach 1916



# Bridge Access to Clearwater Beach

- In 1916 the Public of Clearwater approve a bond of \$10,000 to fund the construction of a 2-mile long wooden bridge to Clearwater Beach



# Wooden Bridge to Clearwater Beach circa 1917





# Mandalay Avenue Clearwater Beach circa 1920



# Anclote River at Tarpon Springs circa 1920





# Tarpon Springs Sponge Docks circa 1920





# Tarpon Springs Sponge Exchange circa 1920





# Indian Rocks Beach circa 1920







# Clearwater Beach Hotel circa 1921



# October 25, 1921 Hurricane Event

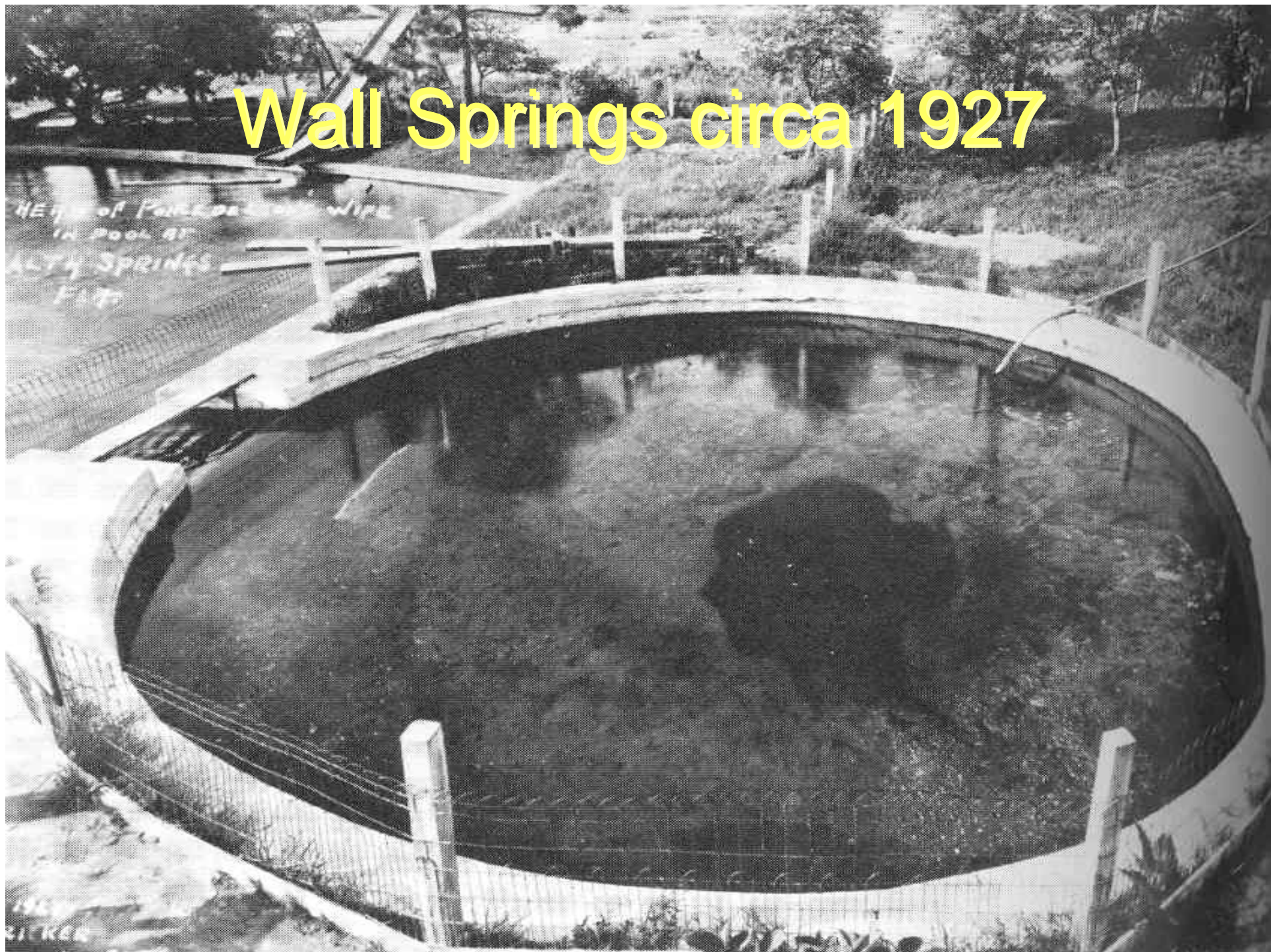
- Two people killed
- Hurricane Pass created

# Florida Land Boom (1921-1925)

- Severe speculation escalates Florida land values by up to 5000%.
- The following real estate collapse extends to post 1945.

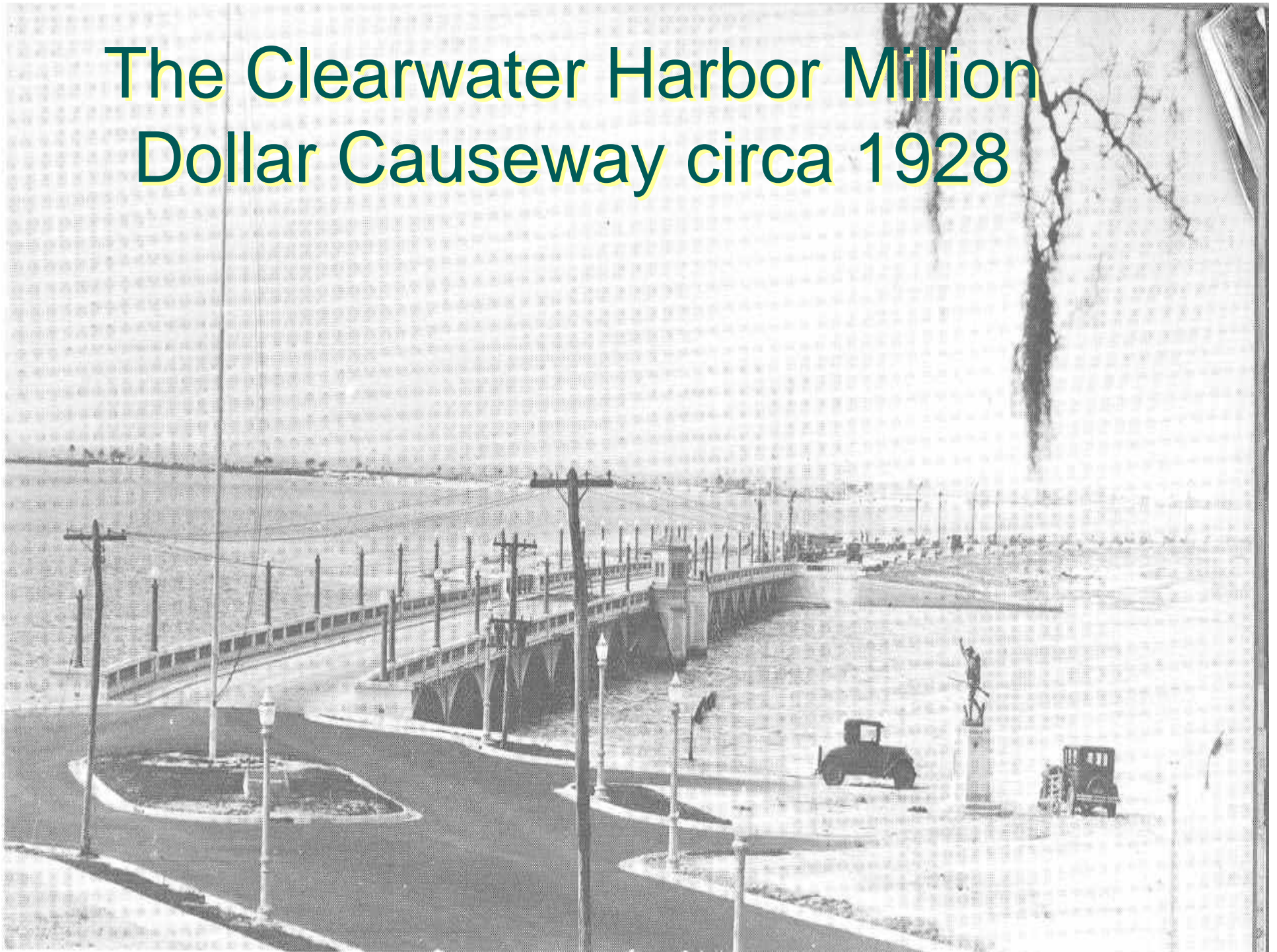


# Wall Springs circa 1927





# The Clearwater Harbor Million Dollar Causeway circa 1928



# 1926-1941 Boom Collapse and Depression

- 1926 Florida Land Boom Collapses
- 1928 Million Dollar Causeway Completed
- 1929 Great Depression
- 1941 United States enters WW-II



# Clearwater Beach circa 1940



# Clearwater Beach circa 1940





# Clearwater Harbor circa 1940



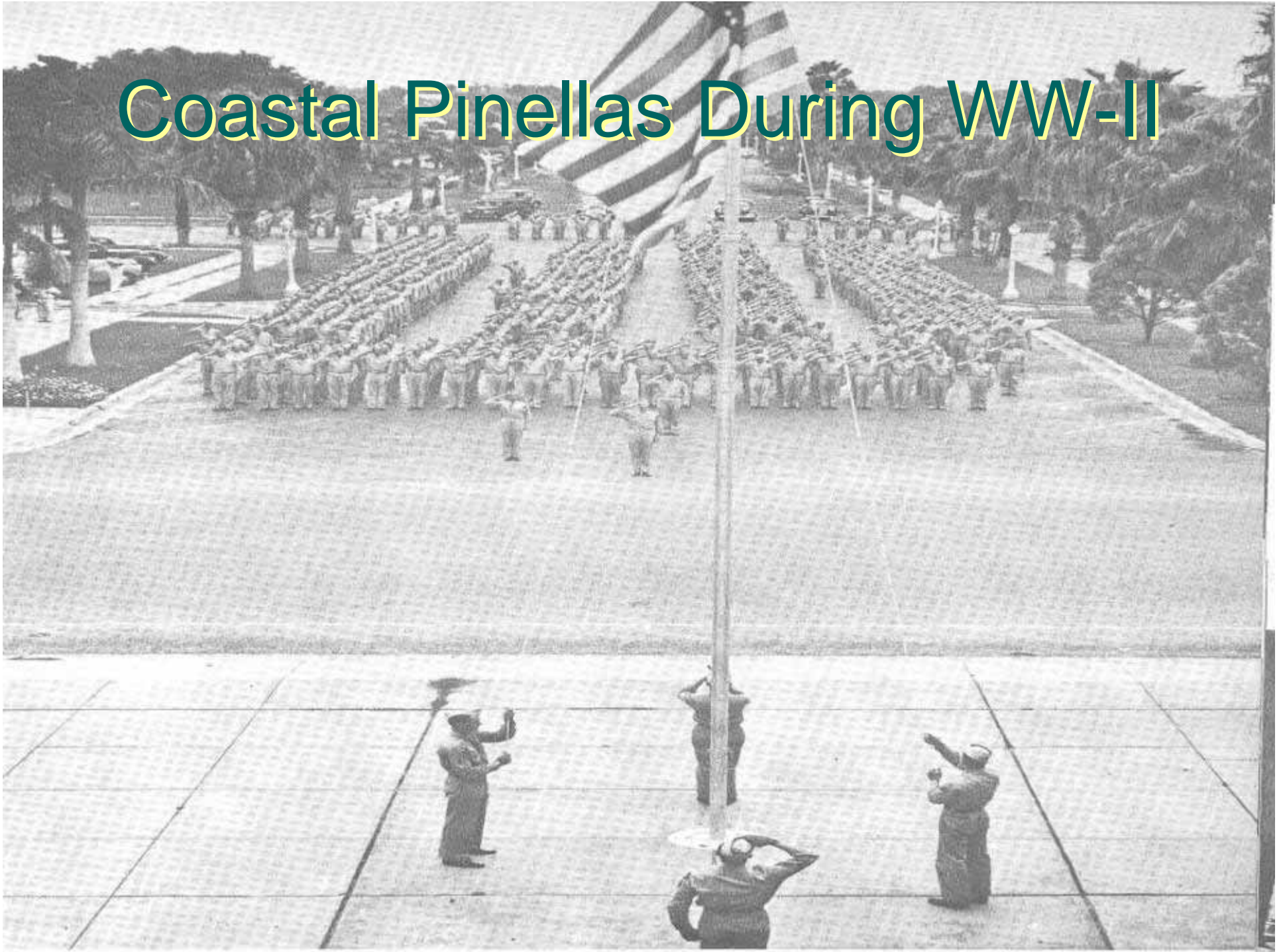


# Clearwater Harbor circa 1940





# Coastal Pinellas During WW-II

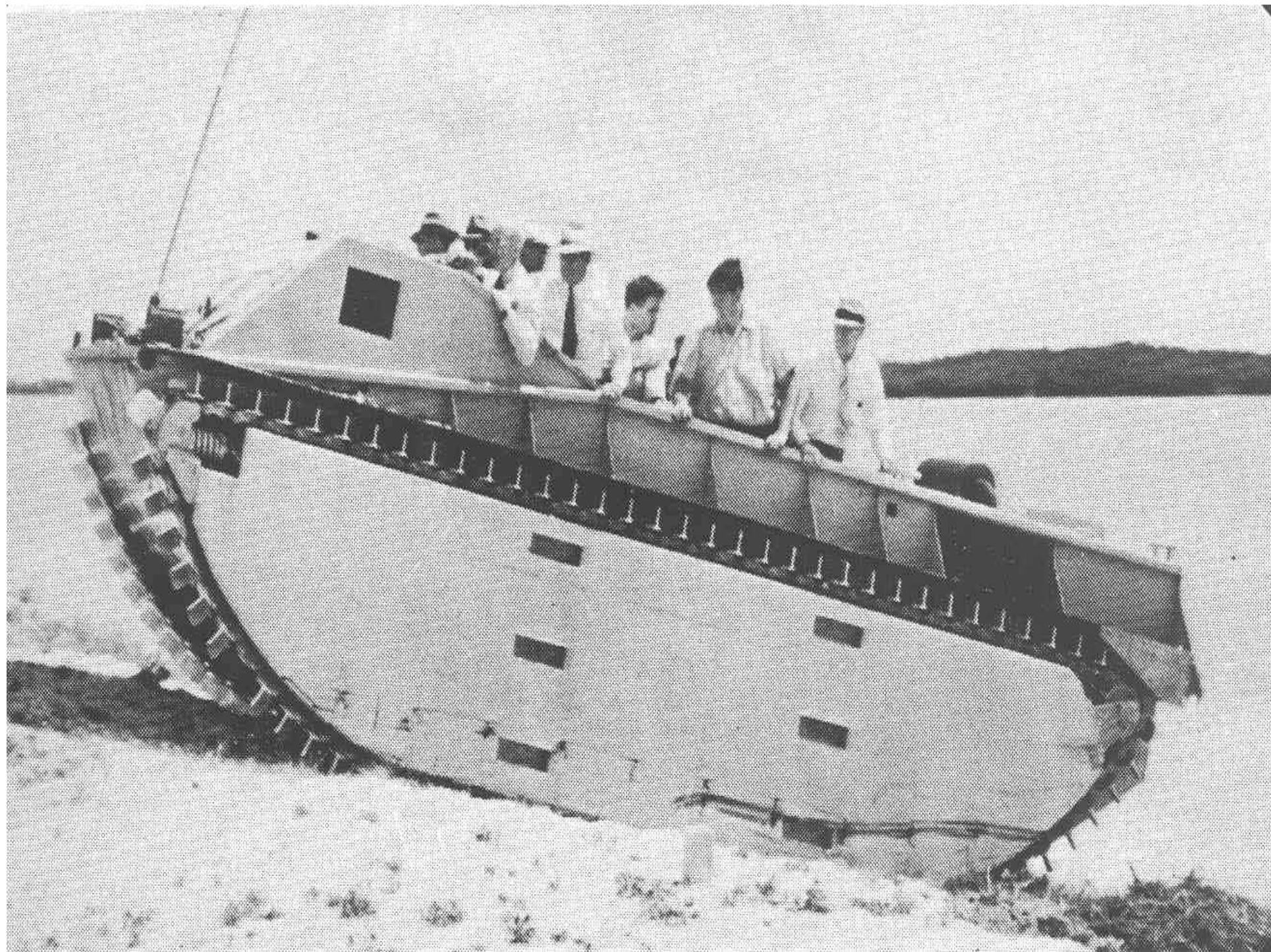




# Roebling Alligator circa 1942







# Potable Water Provided to St. Joseph Sound Beaches

- 1935 Pinellas County Water Department was created by a special act of the Florida Legislature.
- 1937 potable is provided to 200 customers on the barrier islands.
- 1963 potable coastal water resources become contaminated.



# 1945-1959 History

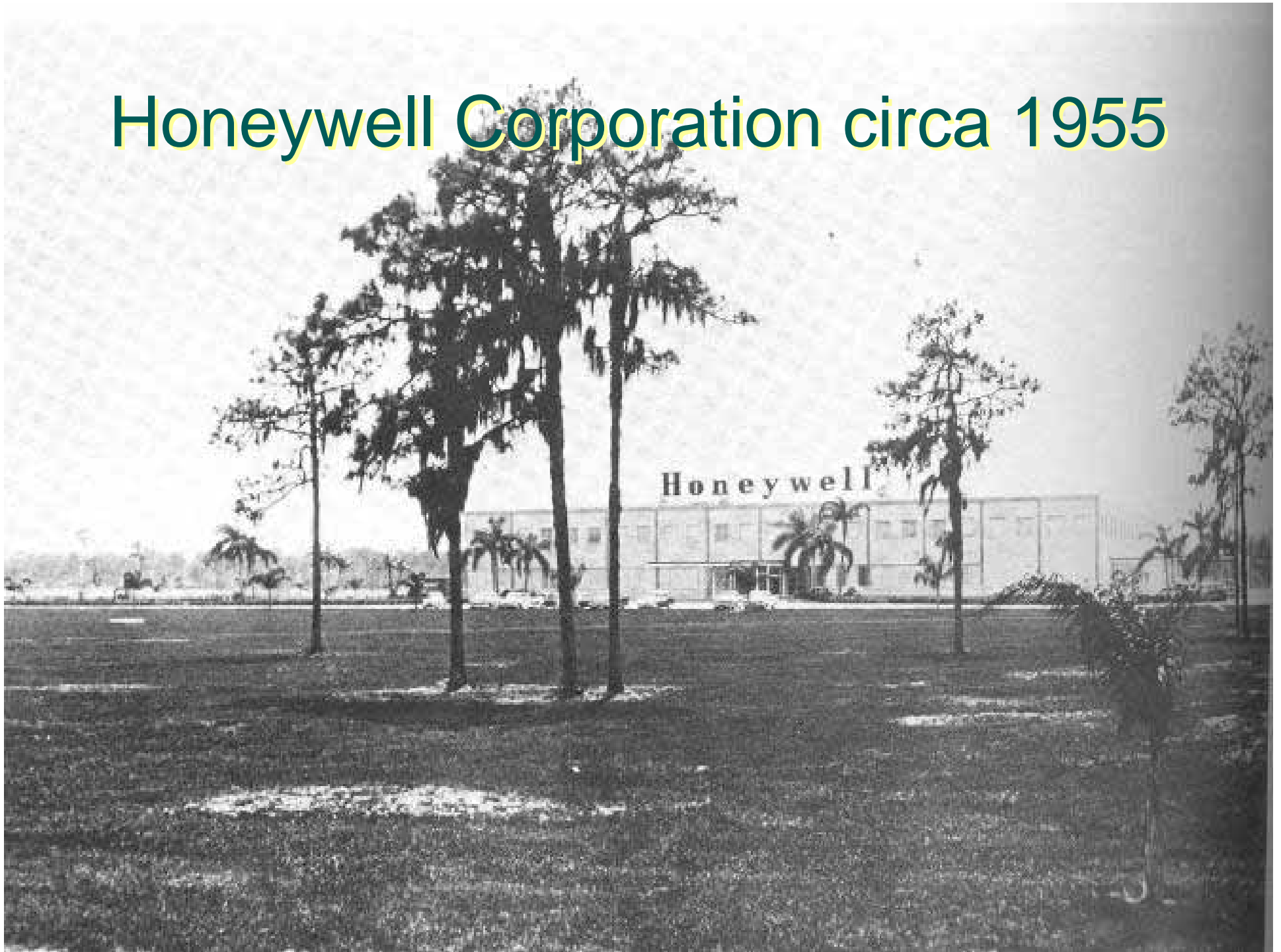
- Returning WW-II military veterans boost population.
- During the 1950s large scale dredge and fill of St. Joseph Sound is exploited 24-hours per day.
- 1955 Pinellas County Commission initiate the Pinellas County Water and Navigational Control Authority in order to regulate dredge and fill operations.
- 1955 Honeywell Corporation opens operations.
- 1957-1958 Island Estates created and completed.

# Ozona Area Dredging circa 1950





# Honeywell Corporation circa 1955



# 1960s

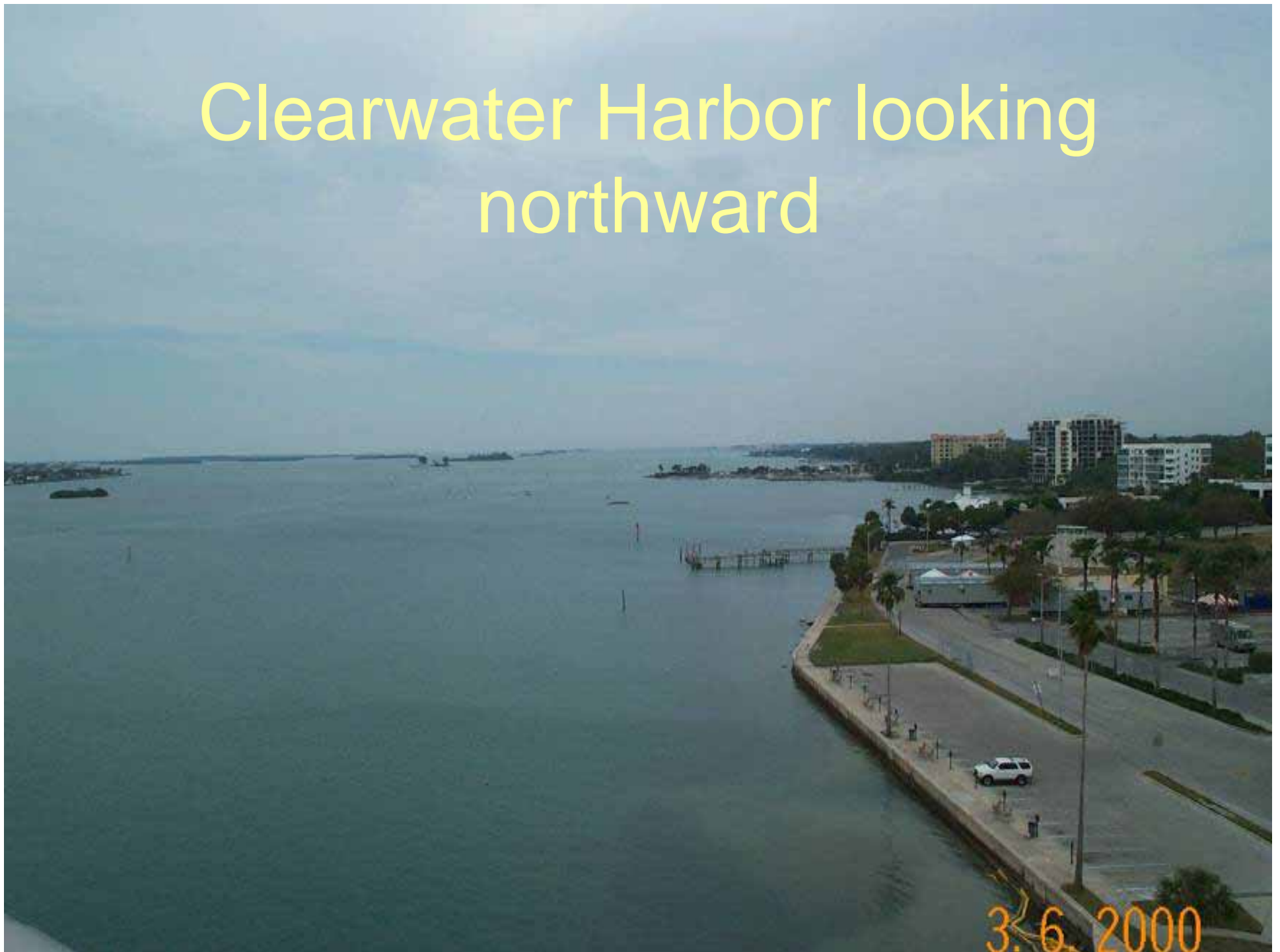
- 1962 major freeze hits the citrus crop on December 13<sup>th</sup>. Many growers sell property for development projects following this freeze.
- 1962 The Clearwater Pass Bridge connects Clearwater Beach to Sand Key.
- 1963 new Clearwater Harbor drawbridge constructed to replace the 1928 drawbridge facility.



# 1970s

- 1975 Tree permitting codified
- 1979 Florida State and Pinellas County water quality regulations require storm water treatment for all new commercial developments.
- Formal sight plan procedures are codified

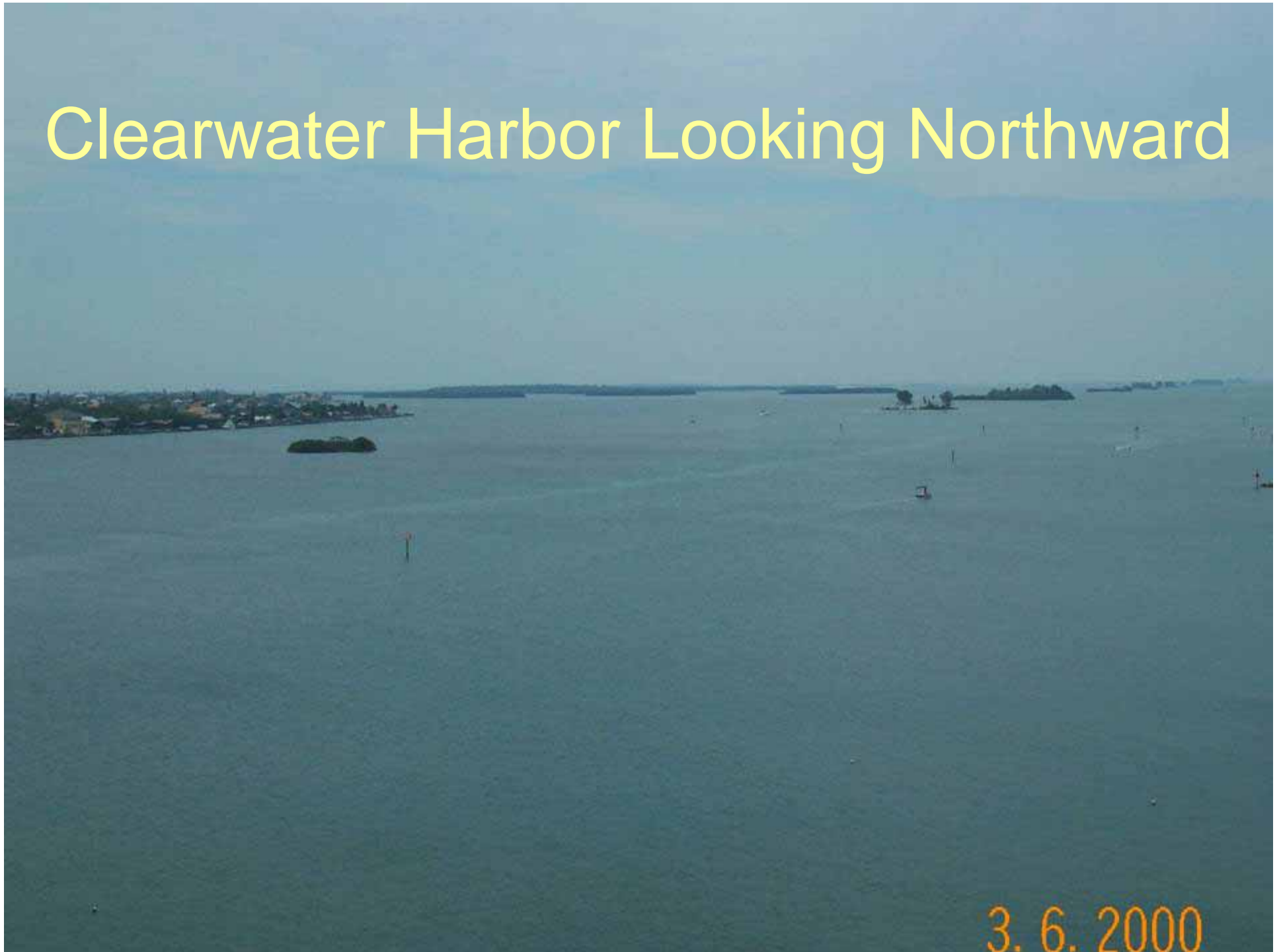
# Clearwater Harbor looking northward



3.6.2000



# Clearwater Harbor Looking Northward

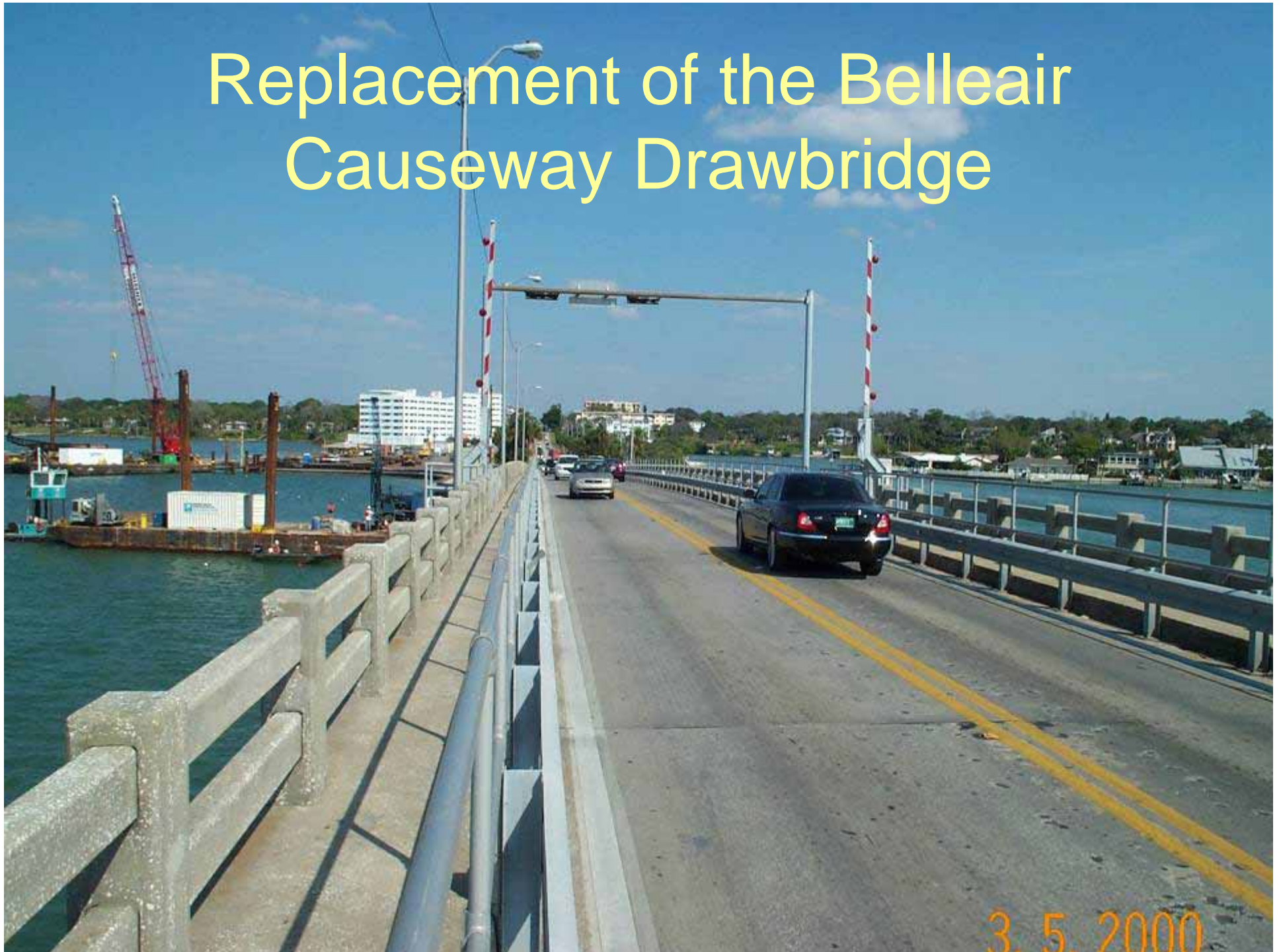


# Clearwater Beach 2007





# Replacement of the Belleair Causeway Drawbridge



# St. Joseph's Sound Looking North



3. 5. 2000



# St. Joseph's Sound Looking North



3. 5. 2000

# The Narrows Looking North 2007



3. 5. 2000



# The Narrows Looking North 2007



3. 5. 2000

# The End



3. 6. 2000