

Pinellas County Waterbodies and the TMDL Program

Pinellas County TMDL Waterbodies

- What is a TMDL?
- Schedule of TMDL Program
- Pinellas County Group 5 Waterbody Basins
- Current Status of Impaired Waters

- Currently in Phase 2 and Phase 3
 - **Phase 2:** *Strategic Monitoring and Assessment*
 - **Phase 3:** *Development and Adoption of TMDLs*
- G5 Verified Period: January 1, 1999 to June 30, 2006
- Updated “Draft Verified List” April 2007

Basin Rotation Schedule For TMDL Development and Implementation

YEAR*	00	01	01	02	02	03	03	04	04	05	05	06	06	07	07	08	08	09	09	10
Group 1	PHASE 1		PHASE 2		PHASE 3		PHASE 4		PHASE 5		PHASE 1		PHASE 2		PHASE 3		PHASE 4		PHASE 5	
Group 2			PHASE 1		PHASE 2		PHASE 3		PHASE 4		PHASE 5		PHASE 1		PHASE 2		PHASE 3		PHASE 4	
Group 3					PHASE 1		PHASE 2		PHASE 3		PHASE 4		PHASE 5		PHASE 1		PHASE 2		PHASE 3	
Group 4							PHASE 1		PHASE 2		PHASE 3		PHASE 4		PHASE 5		PHASE 1		PHASE 2	
Group 5									PHASE 1		PHASE 2		PHASE 3		PHASE 4		PHASE 5		PHASE 1	
	1 st Five-year Cycle – High-priority Waters										2 nd Five-year Cycle – Medium-Priority Waters									

*Projected years for phases 3, 4, and 5 may change due to accelerated local activities, length of plan development, legal challenges, etc.

TMDL Potentially Impaired Waters

High Priority (2007 TMDL)

WBID 1508 Klosterman Bayou Run Tidal

Parameter(s)

**Dissolved Oxygen, Nutrients (Chl-a),
Fecal Coliform**

WBID 1567 Stevenson Creek Tidal

Dissolved Oxygen, Nutrients (Chl-a)

Low Priority (2012 TMDL)

WBID 1440 Anclole River Tidal

Dissolved Oxygen, Mercury

WBID 1527 Sutherland Bayou (Smith Creek)

Fecal Coliform

WBID 1538 Curlew Creek Tidal

Nutrients (Chl-a), Fecal Coliform

WBID 1538 Curlew Creek Freshwater

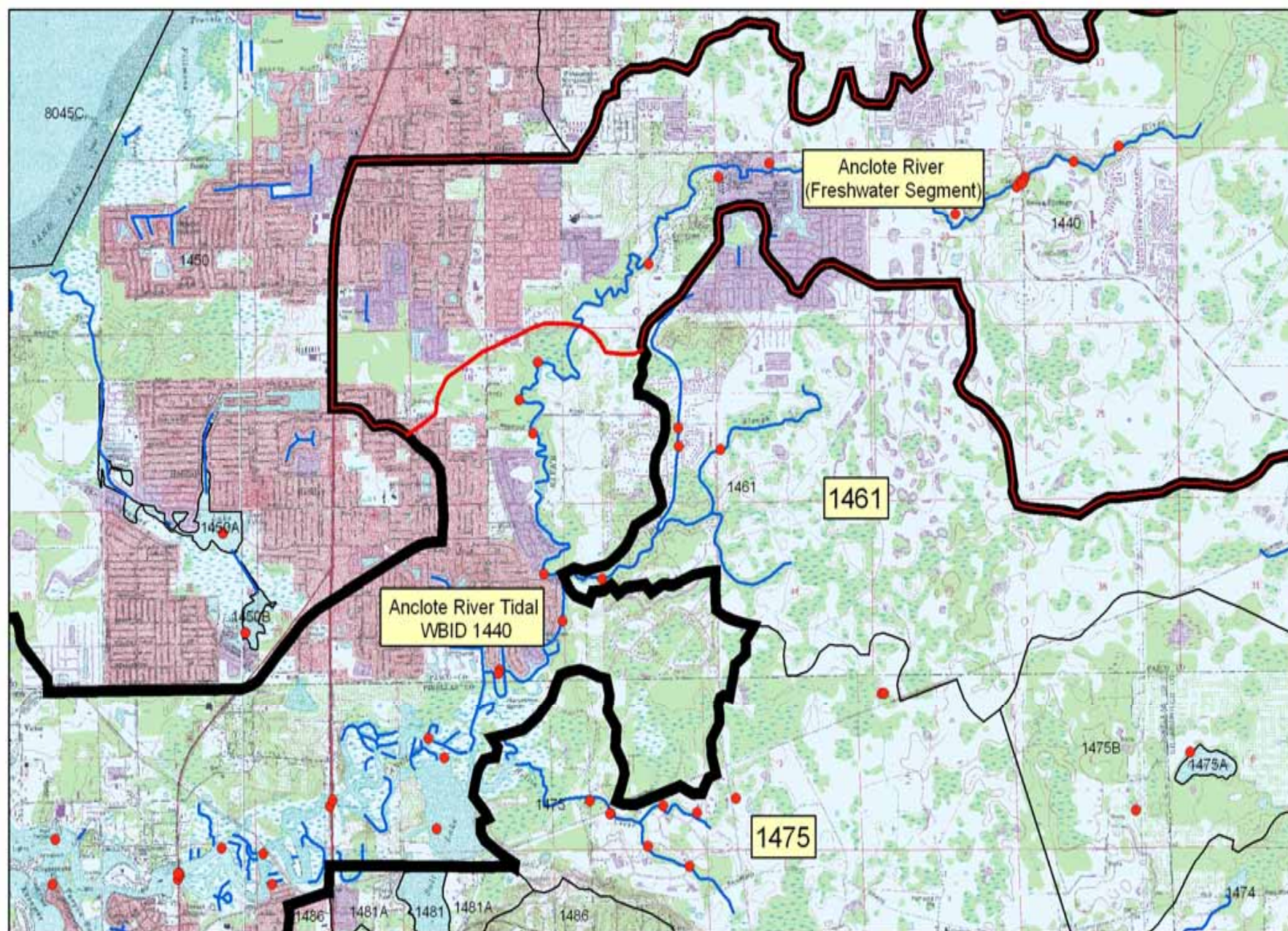
Fecal Coliform

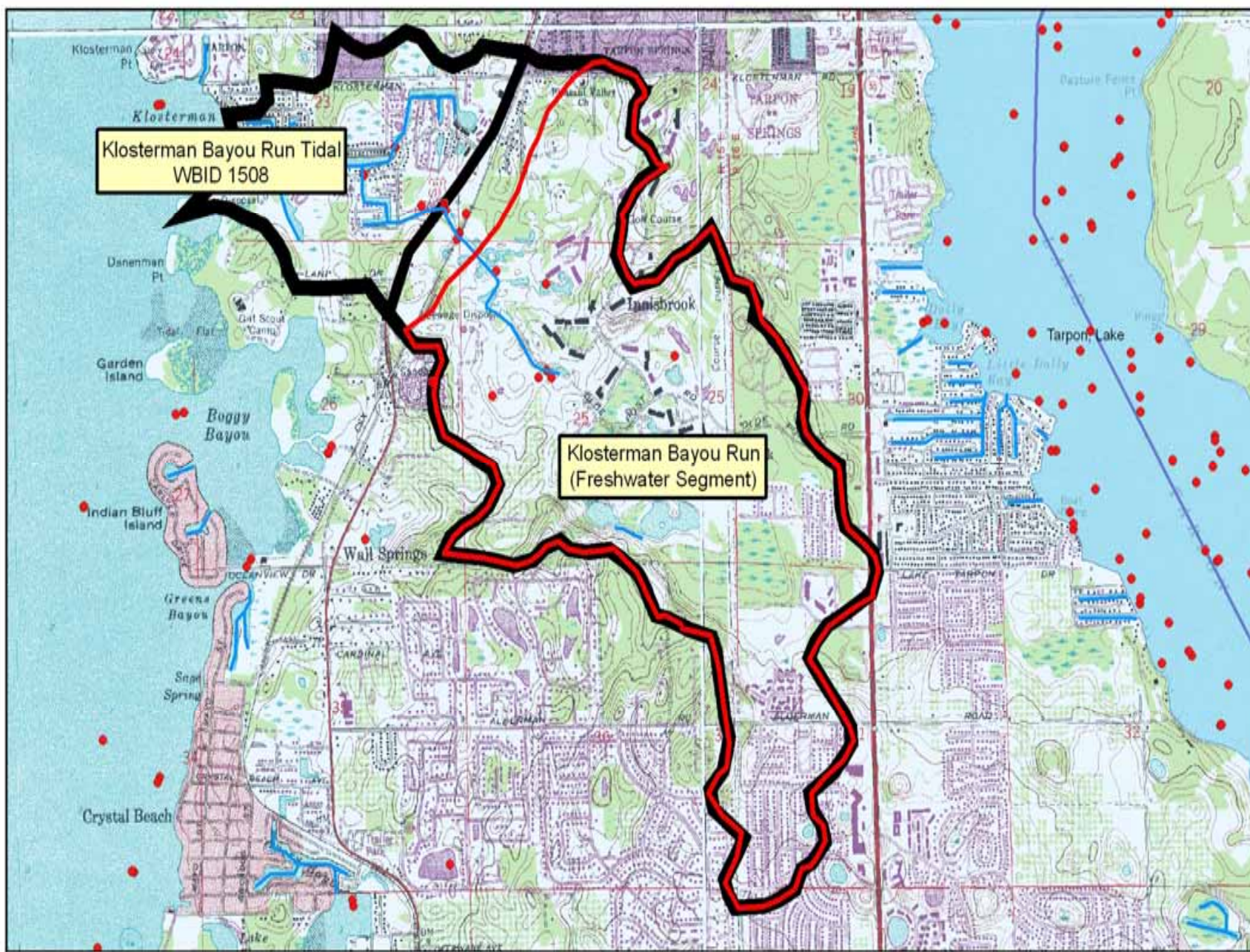
WBID 1556 Cedar Creek

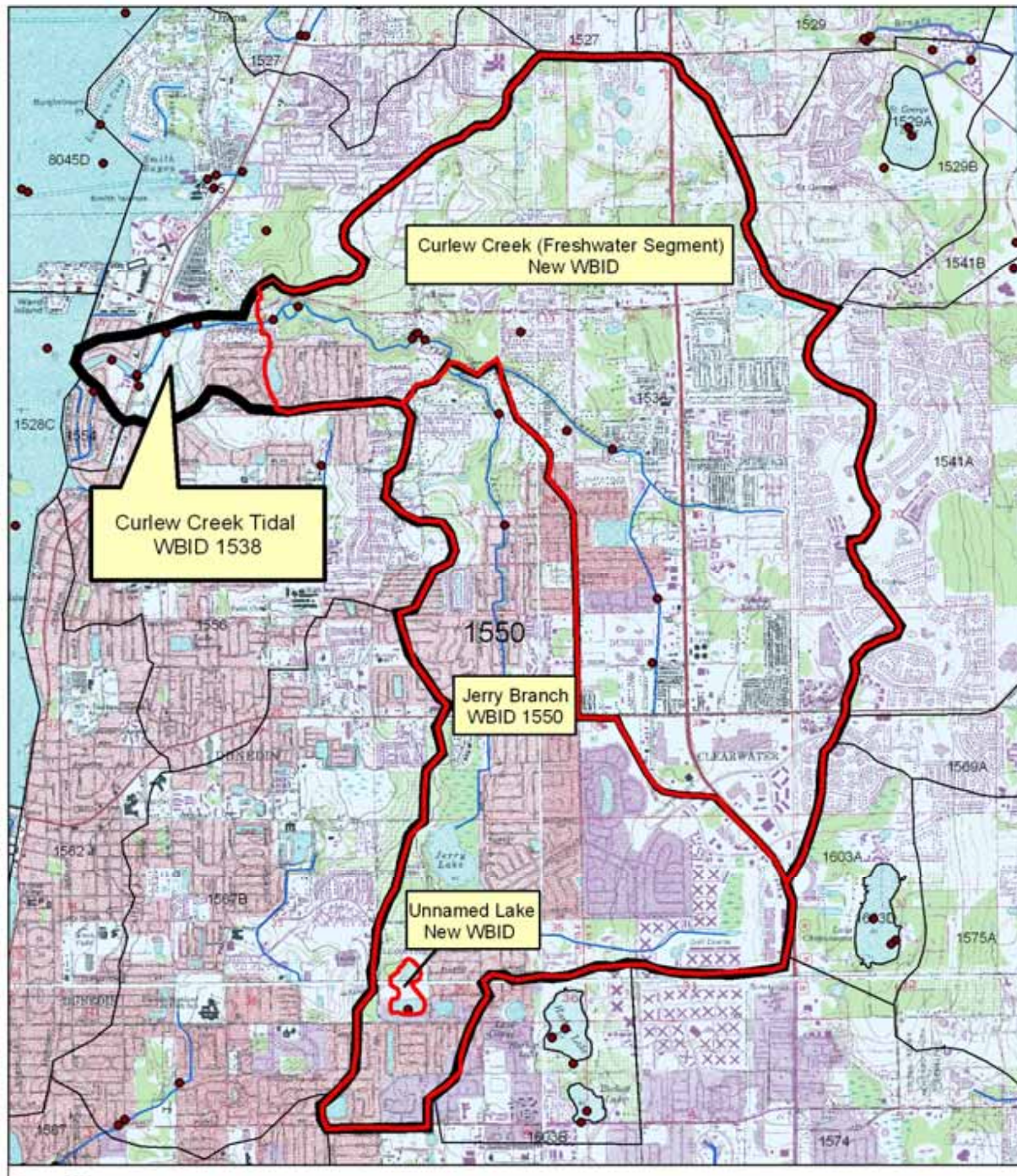
**Dissolved Oxygen, Nutrients (Chl-a),
Fecal Coliform**

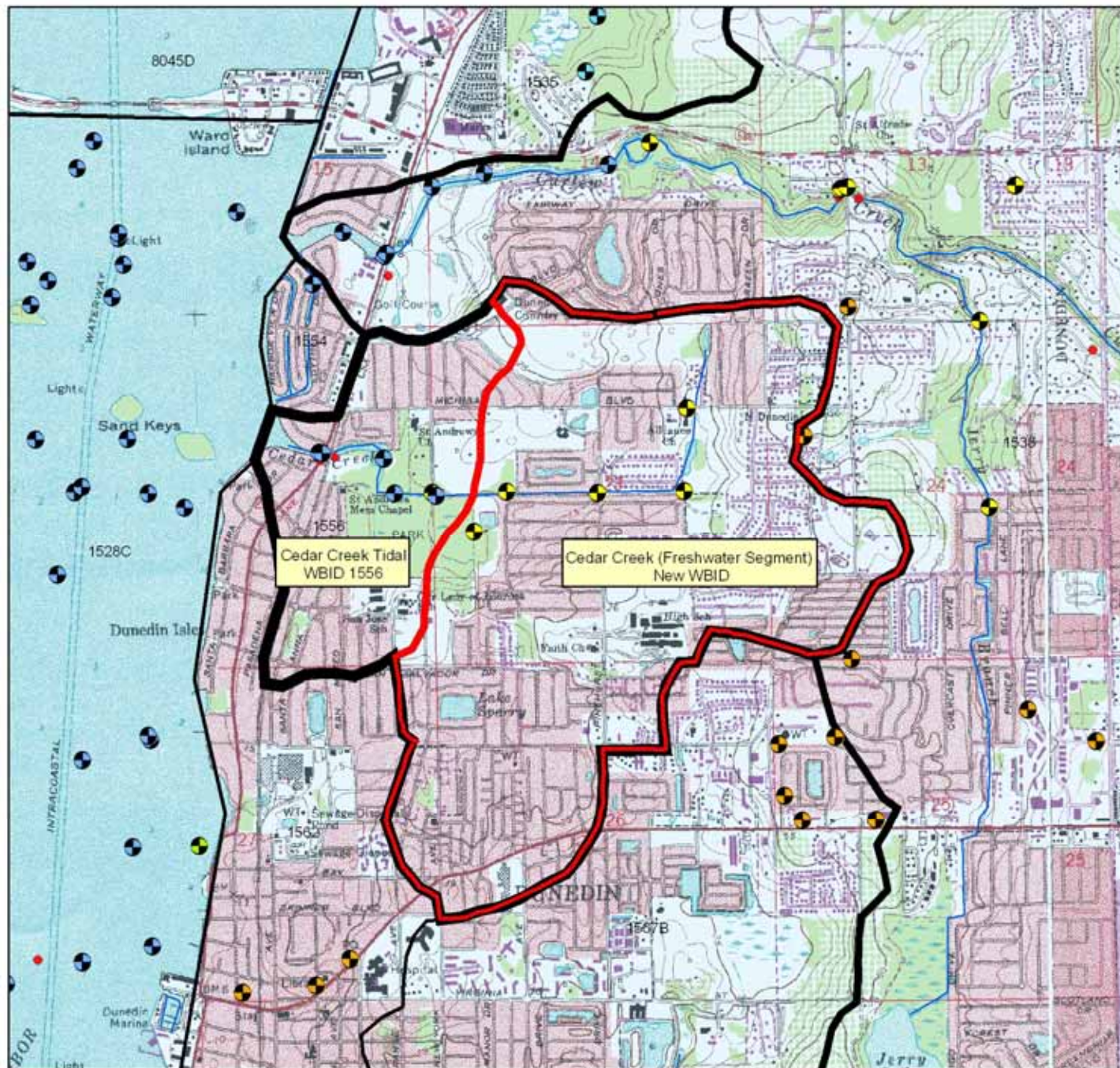
WBID 1567C Stevenson Creek Freshwater

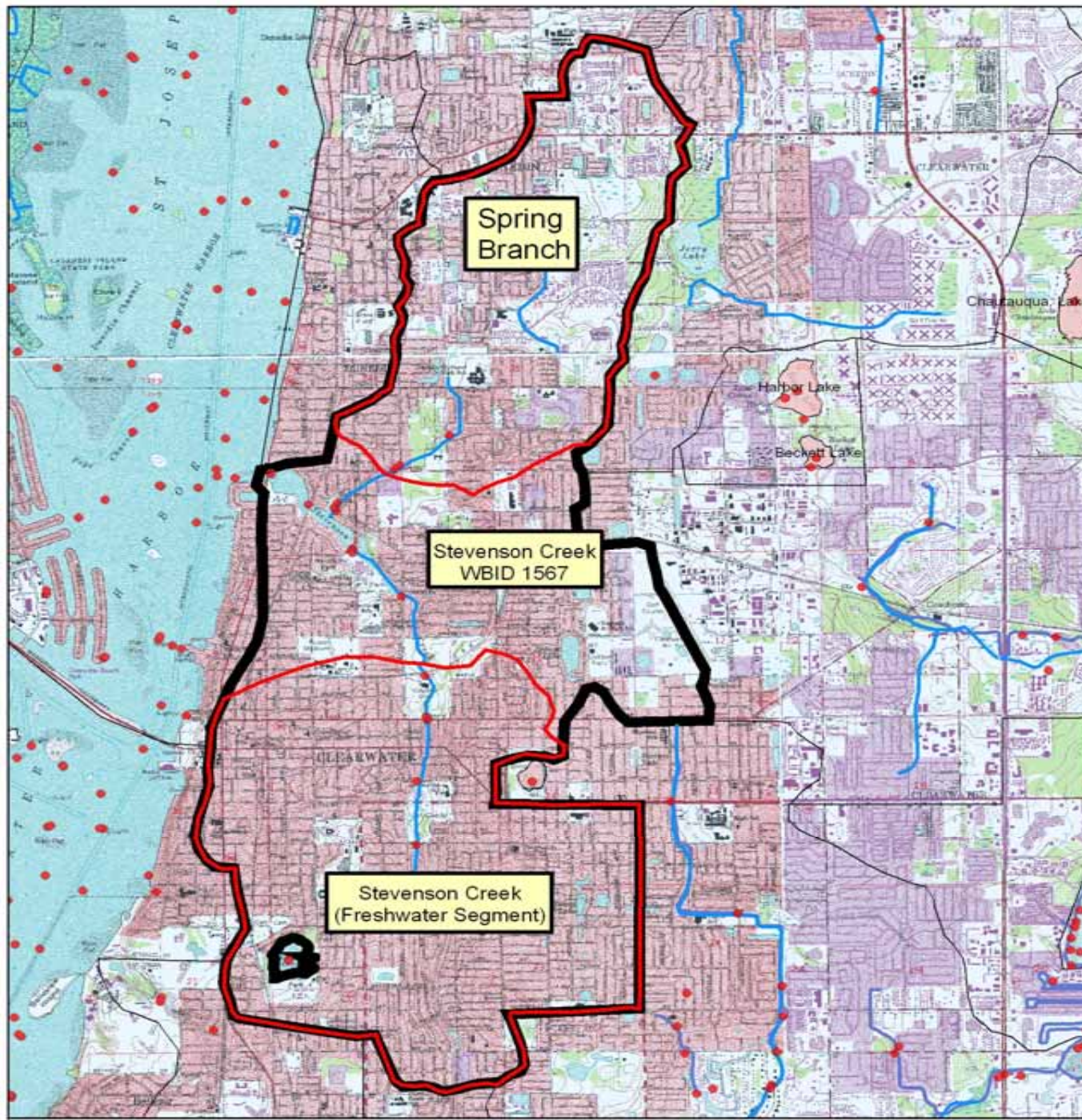
Fecal Coliform











St Joseph Sound

**Clearwater Harbor
North**

**Clearwater Harbor
South**

1508

Klosterman Bayou Basin

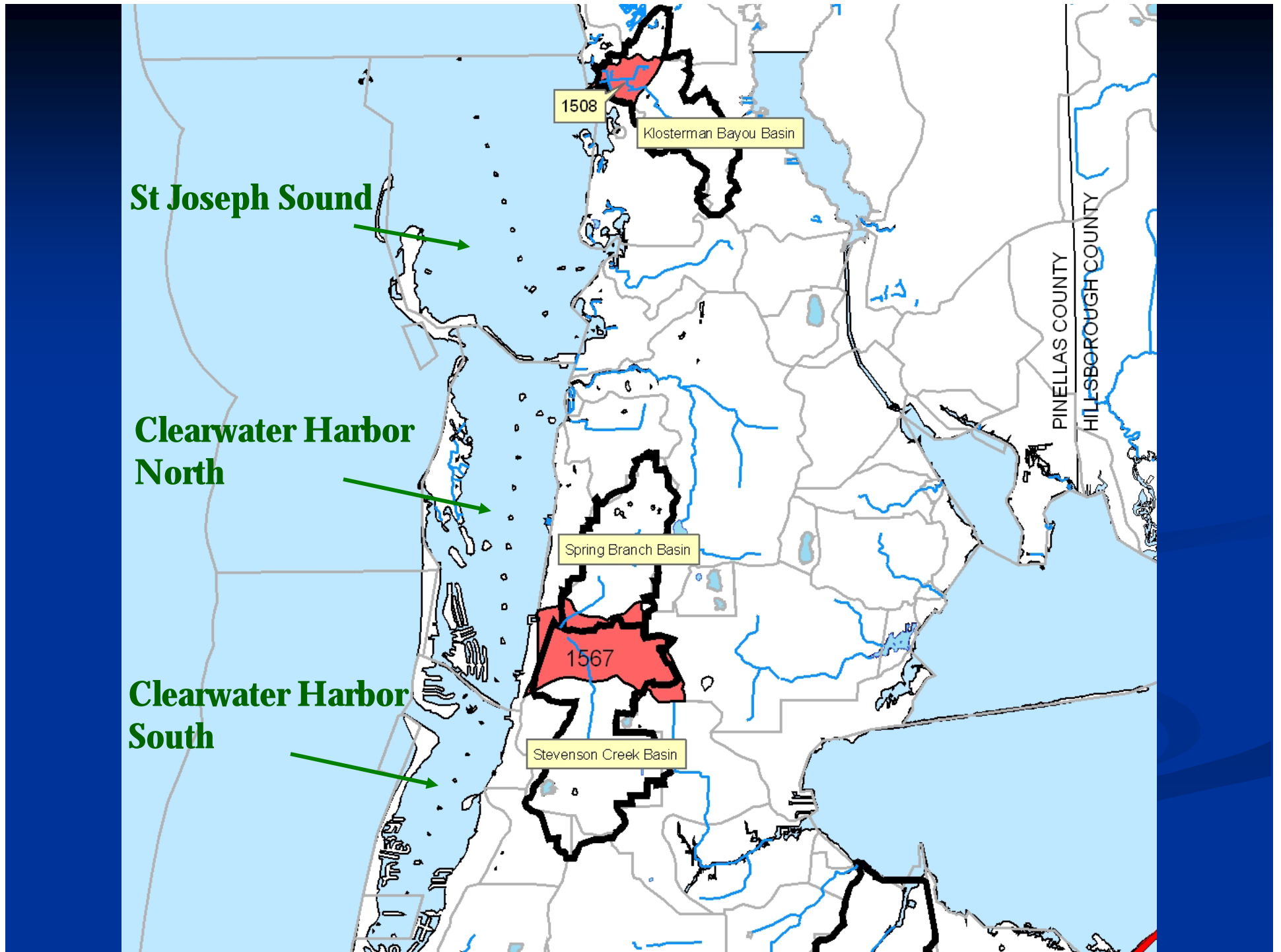
Spring Branch Basin

1567

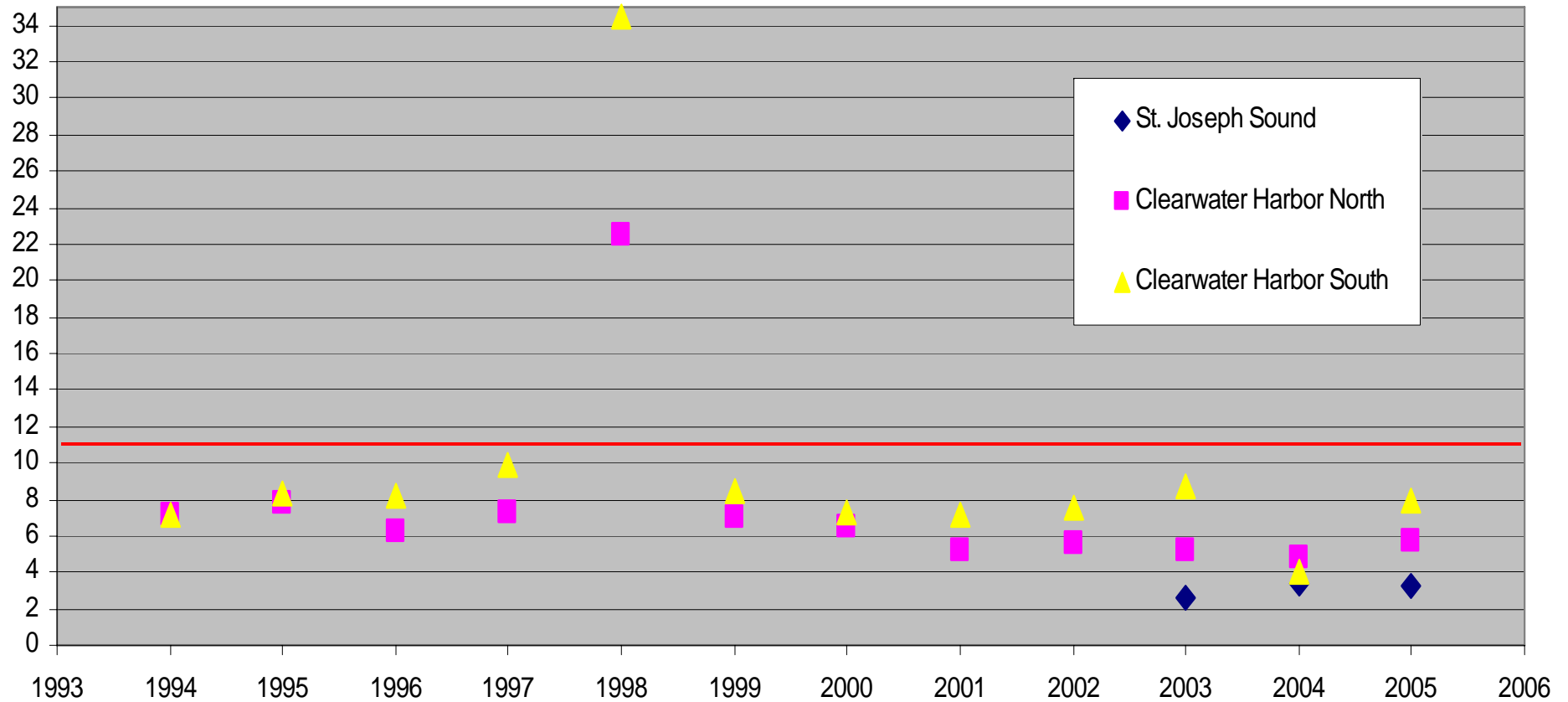
Stevenson Creek Basin

PINELLAS COUNTY

HILLSBOROUGH COUNTY



Corrected Chlorophyll-a Annual Averages (1994 - 2005)



No sewage spill reported to FDEP in July 29, 1998.

Contact Information:

Kevin O'Donnell

TMDL Coordinator

Pinellas County

Watershed Management Division

300 South Garden Ave

Clearwater, Fl 33756

(727) 464-4462