



# Through the Years

Pinellas County  
Planning Department

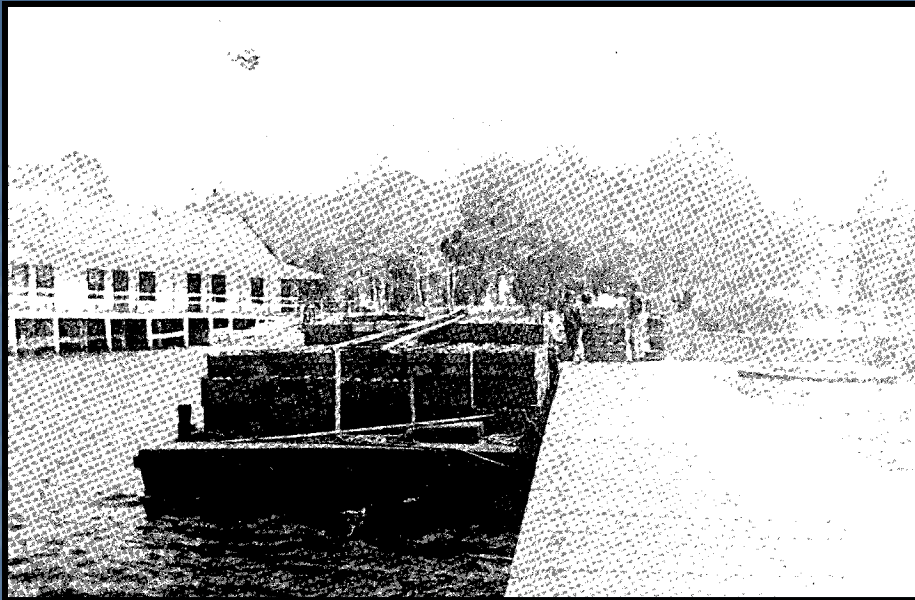


Carting citrus to  
railroad in Palm  
Harbor – circa 1890



Agriculture in Largo –  
circa 1914

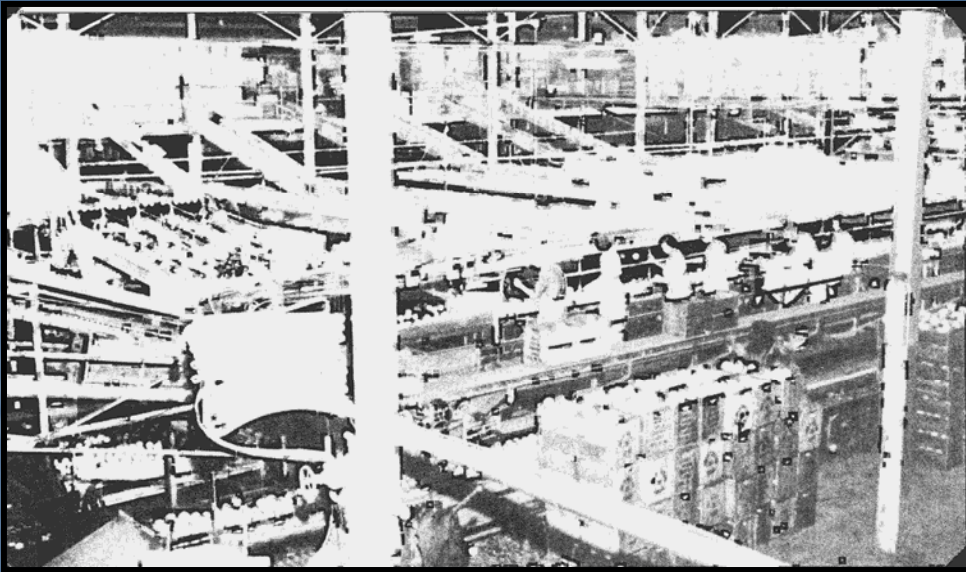




Citrus Barge at the Ozona Docks –  
circa 1915

Sponge Exchange in Tarpon  
Springs – circa 1910





Sorting citrus at Taylor  
Packing Plant in Largo –  
circa 1934

Aerial view of intersection of  
Walsingham Rd and Indian  
Rocks Road – circa 1939







circa 1928

These images show Clearwater Beach still undeveloped. The gulf beaches were popular for rest and relaxation, a day of swimming and sunbathing, and were a great place to get a breathe of fresh air.



circa 1932



The Unincorporated Beaches  
of  
TREASURE ISLAND  
1941



## Growing Ozona



You'd never recognize it now, but this was Ozona near Dunedin in June 1950. Even then pumping was going on, and the community was beginning its phenomenal growth.

# Who says “They don’t make land anymore”?

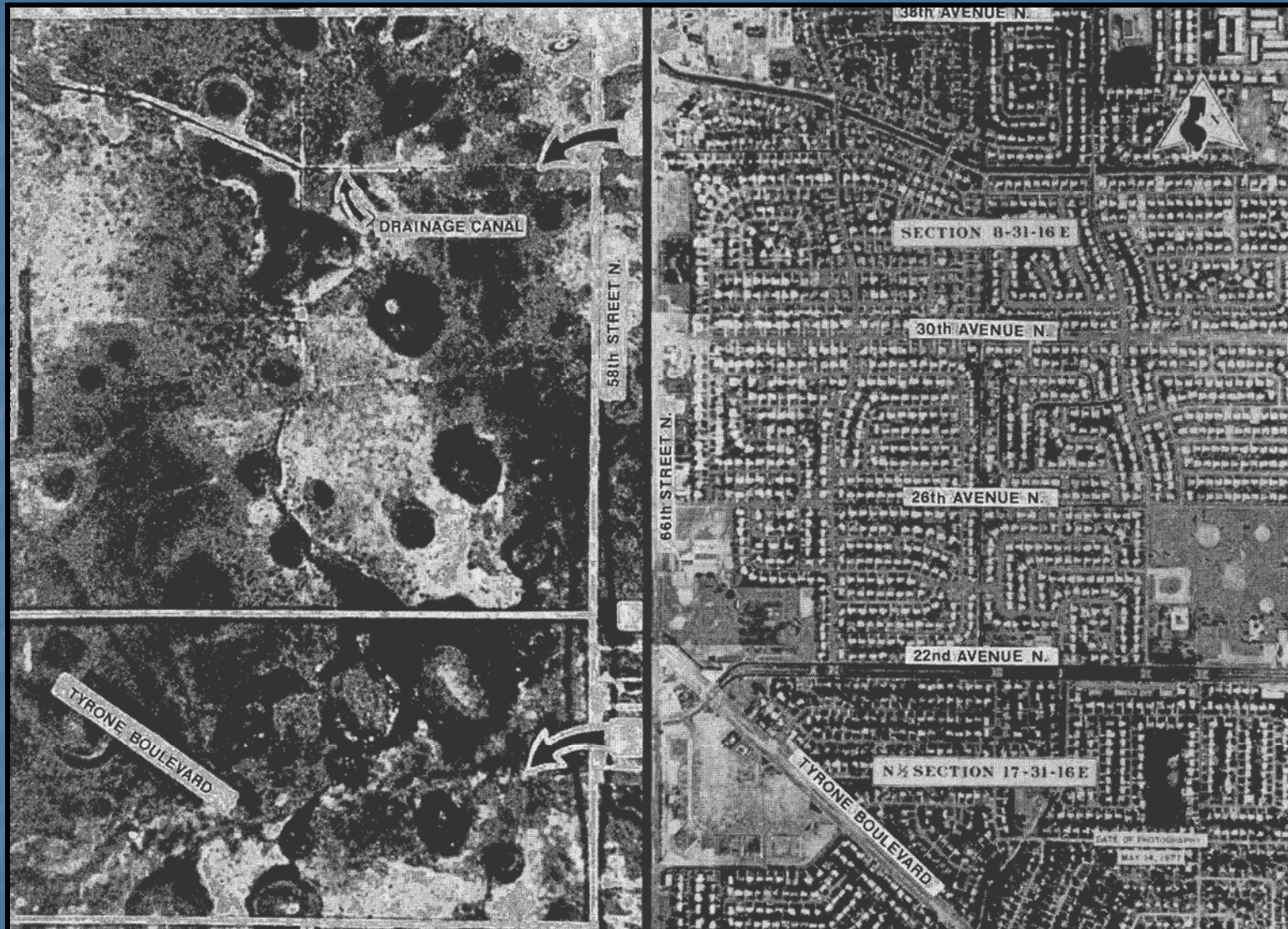
Aerial  
photographs of  
Boca Ciega Bay  
before and after  
dredge and fill  
operations.



(circa 1926)

(circa 1970)





Aerial photographs of St. Petersburg illustrate the dramatic degree of development between 1927 and 1977.





1957 - 2003

**Curlew Groves**  
**Development through the years**





## Percentage of Developed Land in Pinellas County

