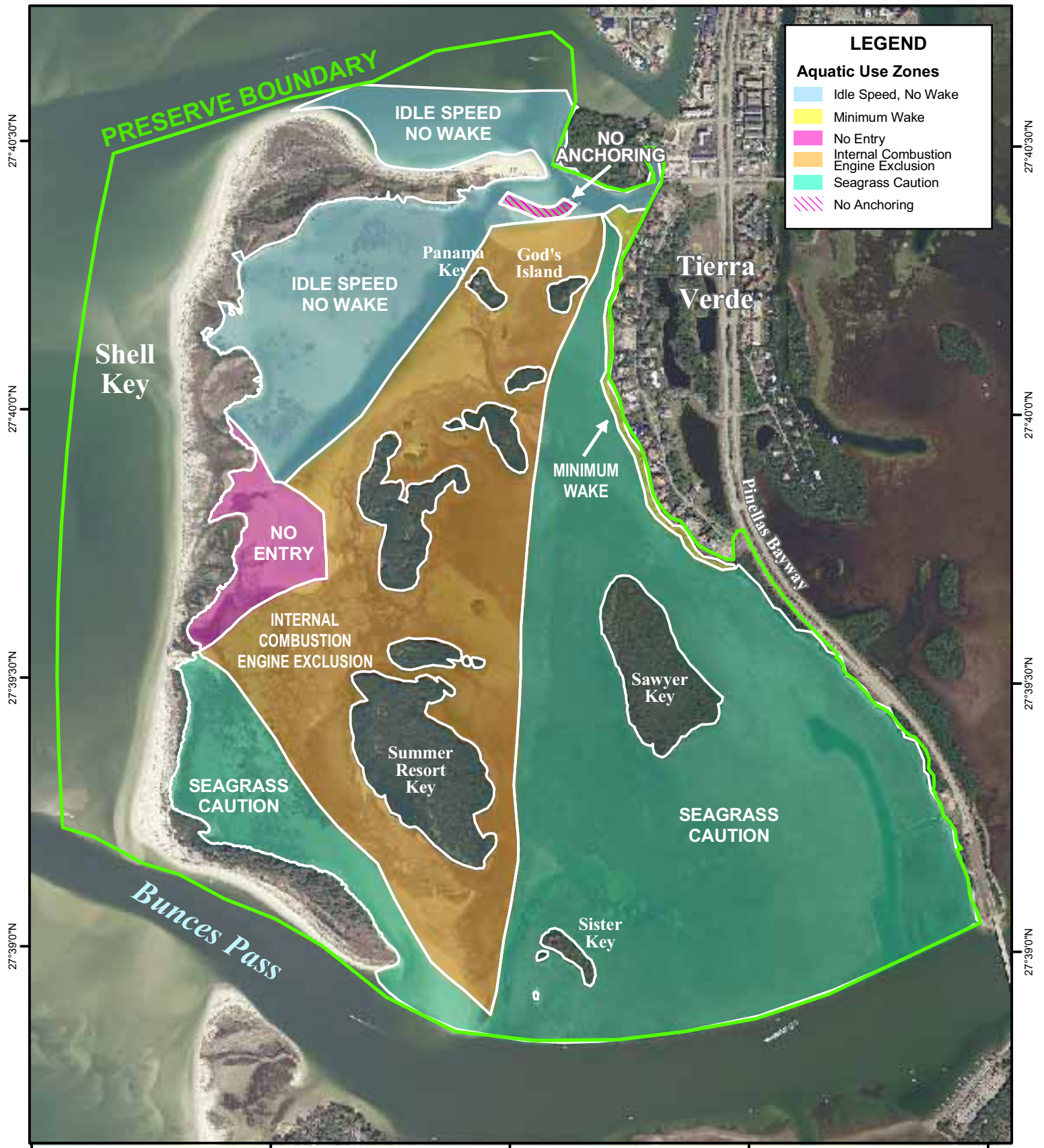


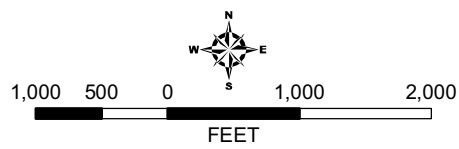
# SHELL KEY PRESERVE



**LEGEND**

**Aquatic Use Zones**

- Idle Speed, No Wake
- Minimum Wake
- No Entry
- Internal Combustion Engine Exclusion
- Seagrass Caution
- No Anchoring



This map was created by the Pinellas County Department of Environmental Management, Environmental Lands Division, from the best available sources. This map is a graphical representation of data to be used for planning purposes only. These data may not have been collected under the supervision of a licensed Professional Surveyor and Mapper. Pinellas County makes no warranty as to the accuracy of the data shown on this map. Map Date: May 2008.