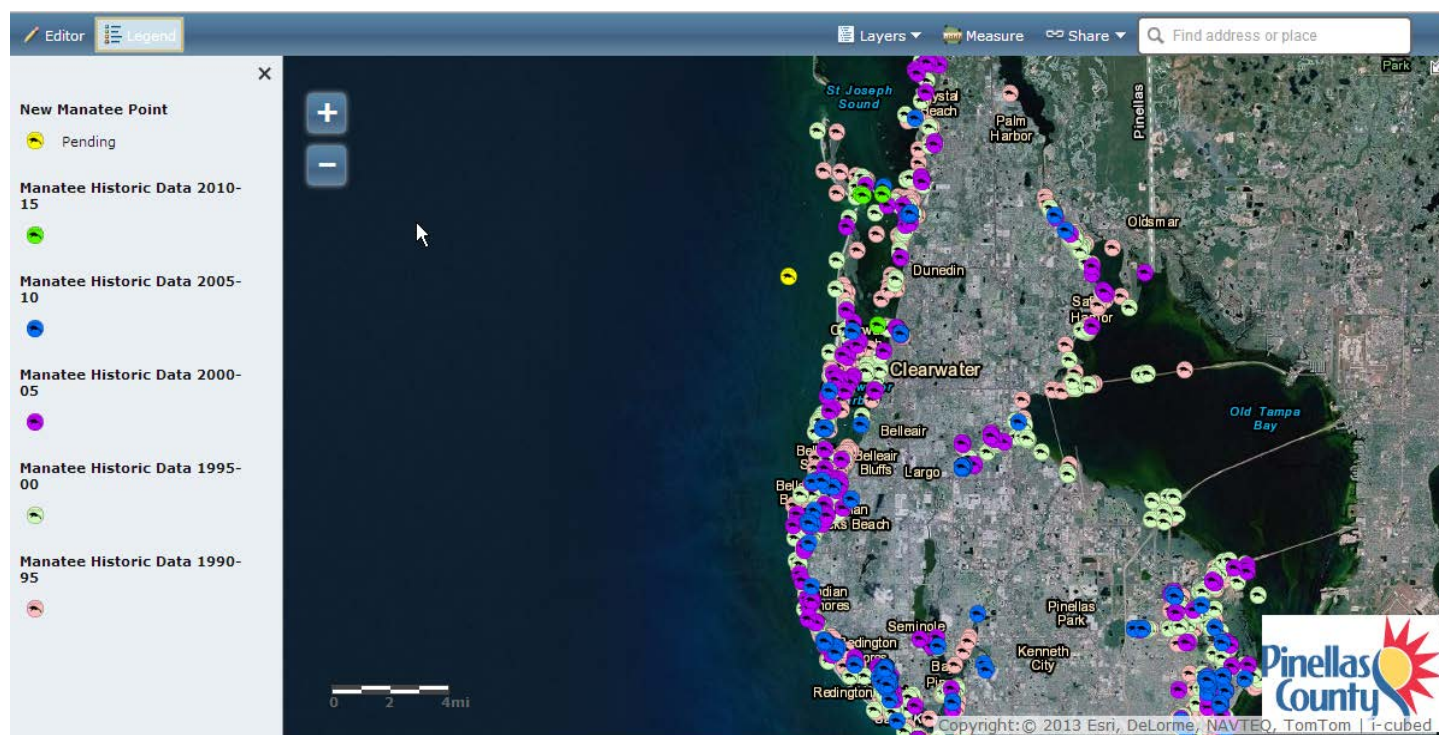




# User Manual

## Manatee Data Collector

*(Generic Data Viewer)*



## Purpose

This application was designed for viewing, adding, updating and deleting manatee point data around Pinellas County. As of the October, 2013 release date the following tool is designed for use on desktop, laptop and mobile applications.

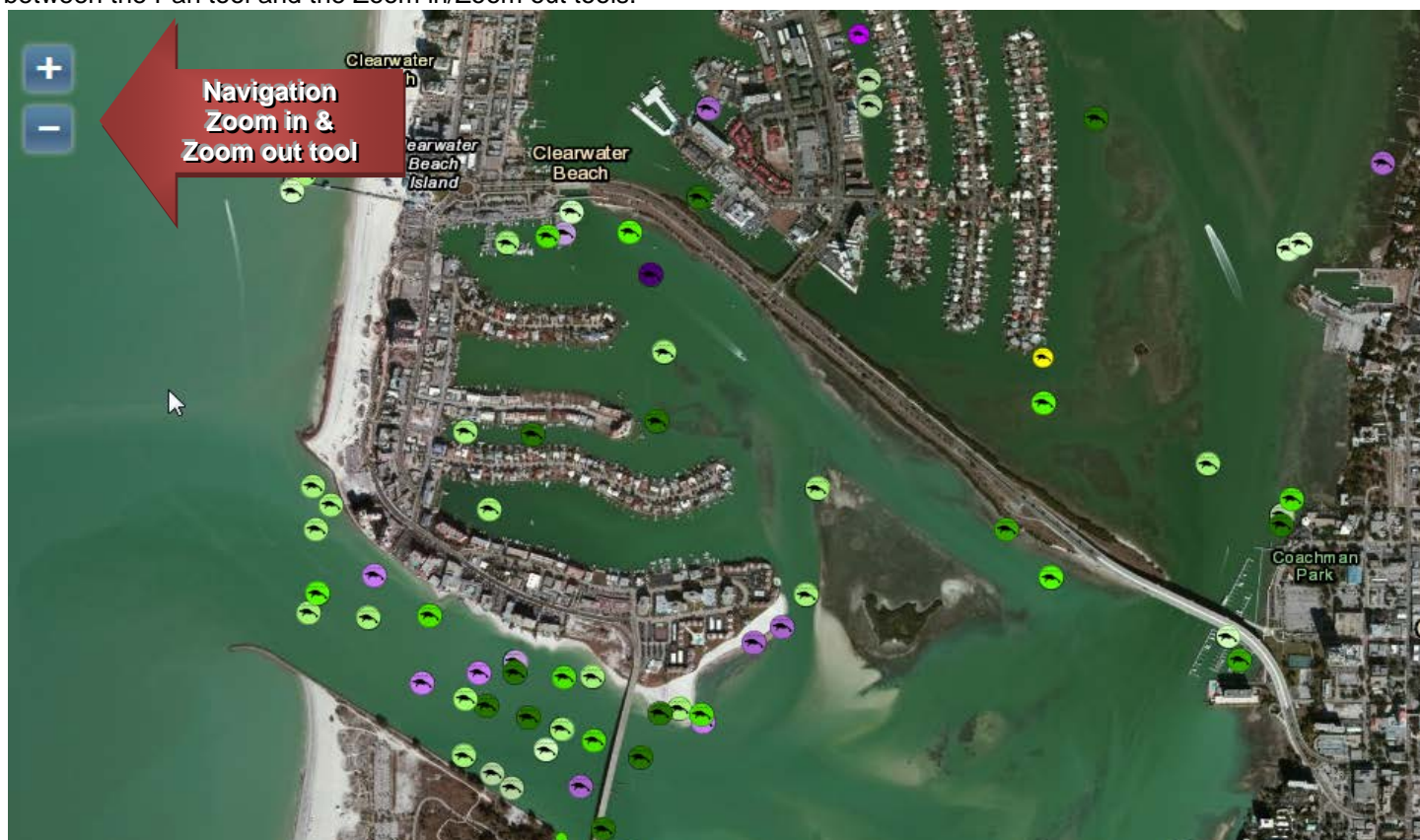
This application was earmarked to start when technology was made available. Since the original drafts were done back in 2012 our business partner ESRI has developed web based technology known as ArcGIS Online (AGO) to help portal GIS data to the end user. Keeping with the COTS format, this tool was designed in AGO to work through the web mapping application to deliver the end user, whether they are administrator or editors the very best GIS mapping application. Three ArcMap documents were created for this tool and were used in designing the web based portal.

Your feedback matters! If you have a request for an enhancement, or have any issues using the application (After reviewing this help document) please contact: [Customer Support](#)

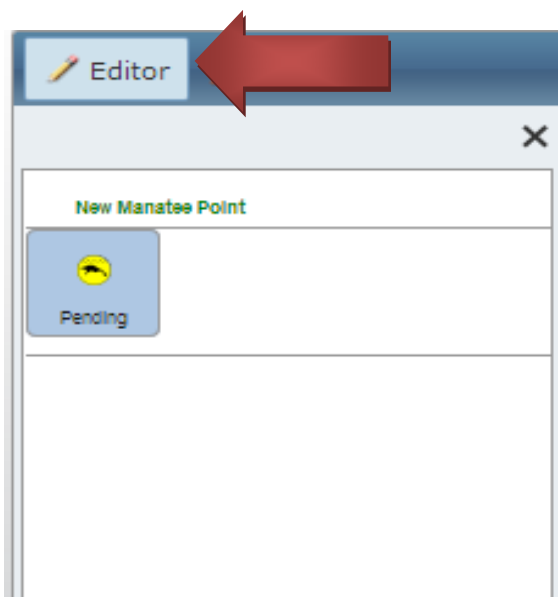
## Navigating the map

Using a keyboard and mouse, the map allows panning by left-clicking on the map, holding the mouse button depressed, and then dragging the mouse in the desired direction (Unless the dedicated Zoom in/Zoom out button has been activated more information below). To zoom in on a desired location hold the keyboard's Shift key down and then left-click and keep the mouse button depressed. At this point, release the Shift key, and drag a box around the desired area with the mouse button still depressed. The zoom box will be visible on the screen as a red border with the exterior areas being characterized by a darker tint. When the mouse button is released the map will zoom to the area identified by the bounding box. In order to zoom out, hold the Ctrl key in addition to the Shift key previously described in the steps for zooming in. Alternatively, a mouse's scroll wheel can be used to quickly zoom the map in or out as desired.

The final, and most apparent, option for navigation is the navigation widget in the upper left portion of the map which also allows the user to pan, systematically, in multiple directions, go to the previous/next viewing extent, easily zoom in or out on the map using a gauged slider, and change the mouse cursor to be dedicated to: Pan, Zoom In, and Zoom out. Using a dedicated mouse cursor button is an easy way to avoid using the keyboard commands, however, remember to switch between the Pan tool and the Zoom in/Zoom out tools.



## Manatee User Data Portal



This is the End User data portal application for imputing manatee data points. The application can be activated by clicking the link on the county web page or by clicking the application itself. Once the application opens you will see the county aerial centered with the user manatee points sounding the peninsula. To start entering manatee points you will hit the Editor Button at the top of the screen on the left.

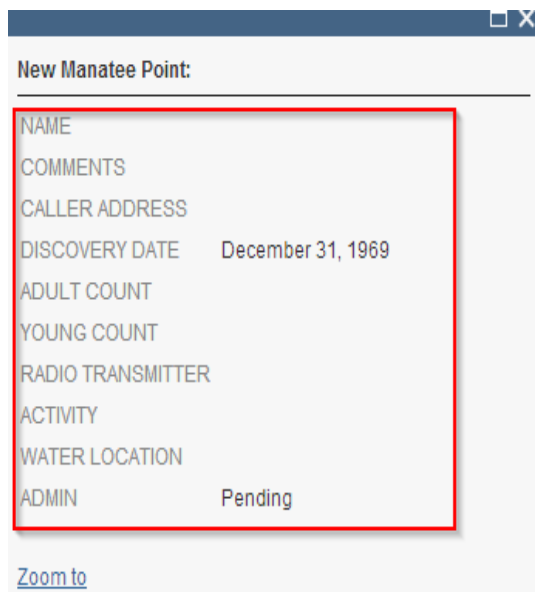
NAME	<input type="text"/>
COMMENTS	<input type="text"/>
CALLER ADDRESS	<input type="text"/>
DISCOVERY DATE	12/31/1969
ADULT COUNT	<input type="text"/>
YOUNG COUNT	<input type="text"/>
RADIO TRANSMITTER	<input type="text"/> !
ACTIVITY	<input type="text"/> !
WATER LOCATION	<input type="text"/>
ADMIN	Pending

[Zoom to](#)

The user will need to click the New Manatee Point attribute and that will then activate the tool. Approximately where the manatee is spotted in water the end user will click the map and a new point will be created with a default value of "Pending" all other data will need to be entered.

Try and enter the data as accurate as possible and click the "X" at the top right of the pop-up to finish the point addition. Repeat these processes to add more Manatee point data.

The pending entered points will be displayed in yellow and will have a user input display pop-up when a new point is added. The end user will enter data that is provided by the pop-up and hit the "X" to close out of the data box.



**New Manatee Point:**

NAME

COMMENTS

CALLER ADDRESS

DISCOVERY DATE December 31, 1969

ADULT COUNT

YOUNG COUNT

RADIO TRANSMITTER

ACTIVITY

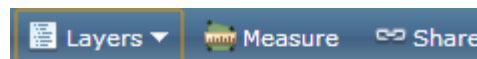
WATER LOCATION

ADMIN Pending

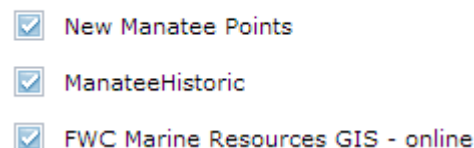
[Zoom to](#)

When the user has finished entering the information and saves the point, the rest of the Manatee points are still displayed to the end user to query and identify information from. Simply use the arrow to click on an existing point to display its information historically for further information.

The features at the top of the map header are extra tools to help you manage the data that is displayed in the map. You will notice that along the header is a Layers drop down tool, this will allow the end user to turn off and on the layers in the map, as displayed to the right.



Also, a Measurement tool is available for map measurements between Manatee points and the ability to share and search on the internet. These tools should help streamline workflows with the application.



The features above function the same for all widgets within the application making each widget easy to minimize, close, resize, or maximize. Widgets can also be moved anywhere within the internet browser window by left-clicking on the title bar and dragging the widget to the desired location with the mouse button still depressed. Release the mouse button to drop the widget in its new location.

## Additional Information or Comments/Questions

Please send requests for additional information, comments or questions to: [Customer Support](#)

## Esri Dictionary of GIS Terms

The use of jargon in this help document has been kept to a minimum; however, knowing some jargon is important to Understand and detail specific functionality. On the upside, if further information is required to understand a given concept that information can more easily be found when researching, these specialized terms. There is an excellent resource available for more information on any unfamiliar terms at the [Esri dictionary of geographic/GIS terms](#).