

Coastal Management:

Treasure Island - Long Key - St Pete Beach Nourishment Project - 2014

Sunshine and Sunset beaches on Treasure Island and Upham and Pass-A-Grille Beaches on St Pete Beach **have now been completed.**

The total construction costs for this nourishment project is \$16,182,000.00.

Treasure Island - \$10,823,500.00

Upham Beach - \$3,354,934.50

Pass-A-Grille Beach- \$2,003,565.50

A total of approximately 555,000 yd³ of sand will be used.

Sunshine Beach - 75,000 yd³ - Actual quantity - 66,892 (finished)

Sunset Beach - 215,000 yd³ - Actual quantity - 232,407 (finished)

Pass-A-Grille - 125,000 yd³ - Actual quantity - 140,053 (finished)

Upham Beach - 140,000 yd³ -Actual quantity - 156,748 (finished)

This page will be updated as additional information becomes available.

Project Schedule:

[Schedule by Locations](#) (all locations are finished)

[Central Sunset Beach Fill Map](#)

[North Sunset Beach Fill Map](#)

[South Sunset Beach Fill Map](#)

[Treasure Island / Sunshine Beach Fill Map](#)

[Central Pass-a-Grill Fill Map](#)

[North Pass-a-Grill Fill Map](#)

[South Pass-a-Grill Fill Map](#)

[Upham Beach Fill Map](#)

Project Information Notice:

[Treasure Island Long Key Nourishment Project Update](#) (finished)

[Treasure Island Long Key Information Notice](#)

[Public Meeting](#)

2014 Treasure Island - Long Key Beach Renourishment Project
R Monument - Street - Address Reference

Revised August 27, 2014

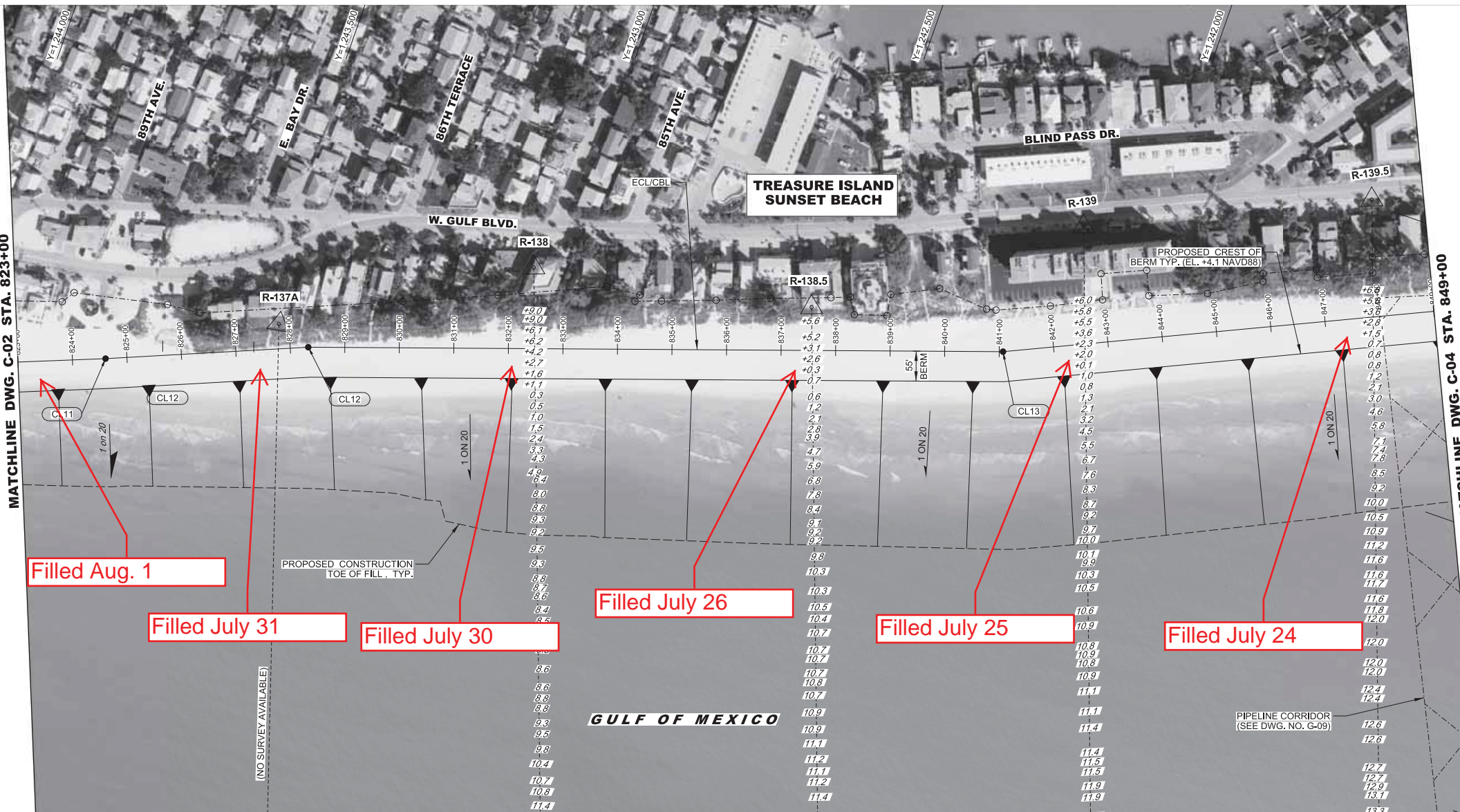
FINAL UPDATE

Filled Locations shown in yellow highlight

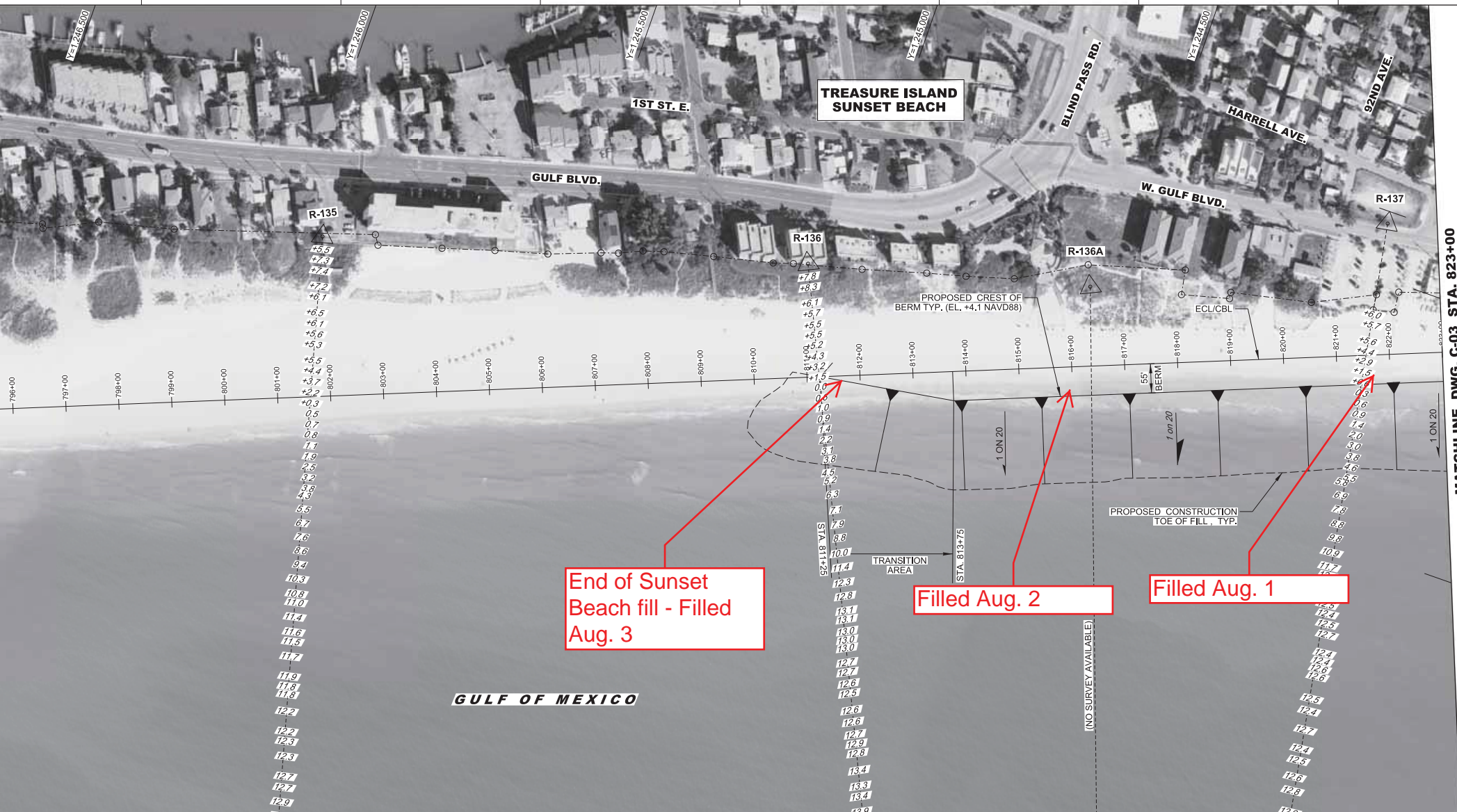
Pipe Corridor Locations shown with light blue highlight

R No.	City	Street	SEG	GULF BLVD ADDRESS	DIRECTION OF ACTIVE WORK AREA MOVEMENT	ACTUAL FILL DATE	
R-126B	TREASURE ISLAND - SUNSHINE BCH	127TH Ave.	1	12650	NORTH END	20-Jul-14	
R-126C	TREASURE ISLAND - SUNSHINE BCH	126TH Ave.	1	12616	NORTH	19-Jul-14	
R-127	TREASURE ISLAND - SUNSHINE BCH	125TH Ave.	1	12459	NORTH	18-Jul-14	
R-127A	TREASURE ISLAND - SUNSHINE BCH	123RD Ave.	1	12310	NORTH	15-Jul-14	
R-128	TREASURE ISLAND - SUNSHINE BCH	121ST Ave.	1	12126	SOUTH	6-Jul-14	
R-128A	TREASURE ISLAND - SUNSHINE BCH	120TH Ave.	1	12023	SOUTH END	6-Jul-14	
R No.	City	Street	SEG	GULF BLVD ADDRESS	DIRECTION OF ACTIVE WORK AREA MOVEMENT	ACTUAL FILL DATE	
R-136	TREASURE ISLAND SUNSET BCH	99TH Ave.	2	9863	NORTH END	3-Aug-14	
R-136A	TREASURE ISLAND SUNSET BCH	Blind Pass Rd.	2	9951	NORTH	2-Aug-14	
R-137	TREASURE ISLAND SUNSET BCH	91ST Ave.	2	8981	NORTH	1-Aug-14	
R-137A	TREASURE ISLAND SUNSET BCH	87TH Ave.	2	8685	NORTH	31-Jul-14	
R-138	TREASURE ISLAND SUNSET BCH	Bay Plaza	2	8582	NORTH	30-Jul-14	
R-138.5	TREASURE ISLAND SUNSET BCH		2	8457	NORTH	26-Jul-14	
R-139	TREASURE ISLAND SUNSET BCH		2	8468	NORTH	25-Jul-14	
R-139.5	TREASURE ISLAND SUNSET BCH		2	8419	NORTH	24-Jul-14	
R-140	TREASURE ISLAND SUNSET BCH	83RD Ave.	2	8301	SOUTH	20-Jul-14	
R-140A	TREASURE ISLAND SUNSET BCH	81ST Ave.	2	8144	SOUTH	22-Jul-14	
R-141	TREASURE ISLAND SUNSET BCH	79TH Ave.	2	7915	SOUTH	23-Jul-14	
R-141A	TREASURE ISLAND SUNSET BCH	77TH Ave.	2	7701	SOUTH END	23-Jul-14	
R No.	City	Street	SEG	GULF WAY ADDRESS	DIRECTION OF ACTIVE WORK AREA MOVEMENT	ACTUAL FILL DATE	
R-160	LONG KEY - PASS-A-GRILLE	22ND Ave.	3	2192	NORTH END	15-Aug-14	
R-161	LONG KEY - PASS-A-GRILLE	18TH Ave.	3	1802	SOUTH	5-Aug-14	
R-162	LONG KEY - PASS-A-GRILLE	15TH Ave.	3	1507	SOUTH	6-Aug-14	
R-163	LONG KEY - PASS-A-GRILLE	11TH Ave.	3	1104	SOUTH	8-Aug-14	
R-164	LONG KEY - PASS-A-GRILLE	7TH Ave.	3	706	SOUTH	9-Aug-14	
R-165	LONG KEY - PASS-A-GRILLE	3RD Ave.	3	301	SOUTH	11-Aug-14	
R-166	LONG KEY - PASS-A-GRILLE	1ST Ave.	3	130	SOUTH END	13-Aug-14	
R No.	City	Street	SEG	BEACH PLAZA ADDRESS	DIRECTION OF ACTIVE WORK AREA MOVEMENT	ACTUAL FILL DATE	
LKBP-1B	LONG KEY - UPHAM BEACH	71ST Ave.	4	7102	NORTH END	23-Aug-14	
LKBP-2	LONG KEY - UPHAM BEACH	70TH Ave.	4	7000	NORTH	22-Aug-14	
LKBP-3	LONG KEY - UPHAM BEACH	69TH Ave.	4	6910	NORTH	20-Aug-14	
LKBP-3B	LONG KEY - UPHAM BEACH	68TH Ave.	4	6850	NORTH	18-Aug-14	
LKBP-4	LONG KEY - UPHAM BEACH	67TH Ave.	4	6702	SOUTH END	16-Aug-14	

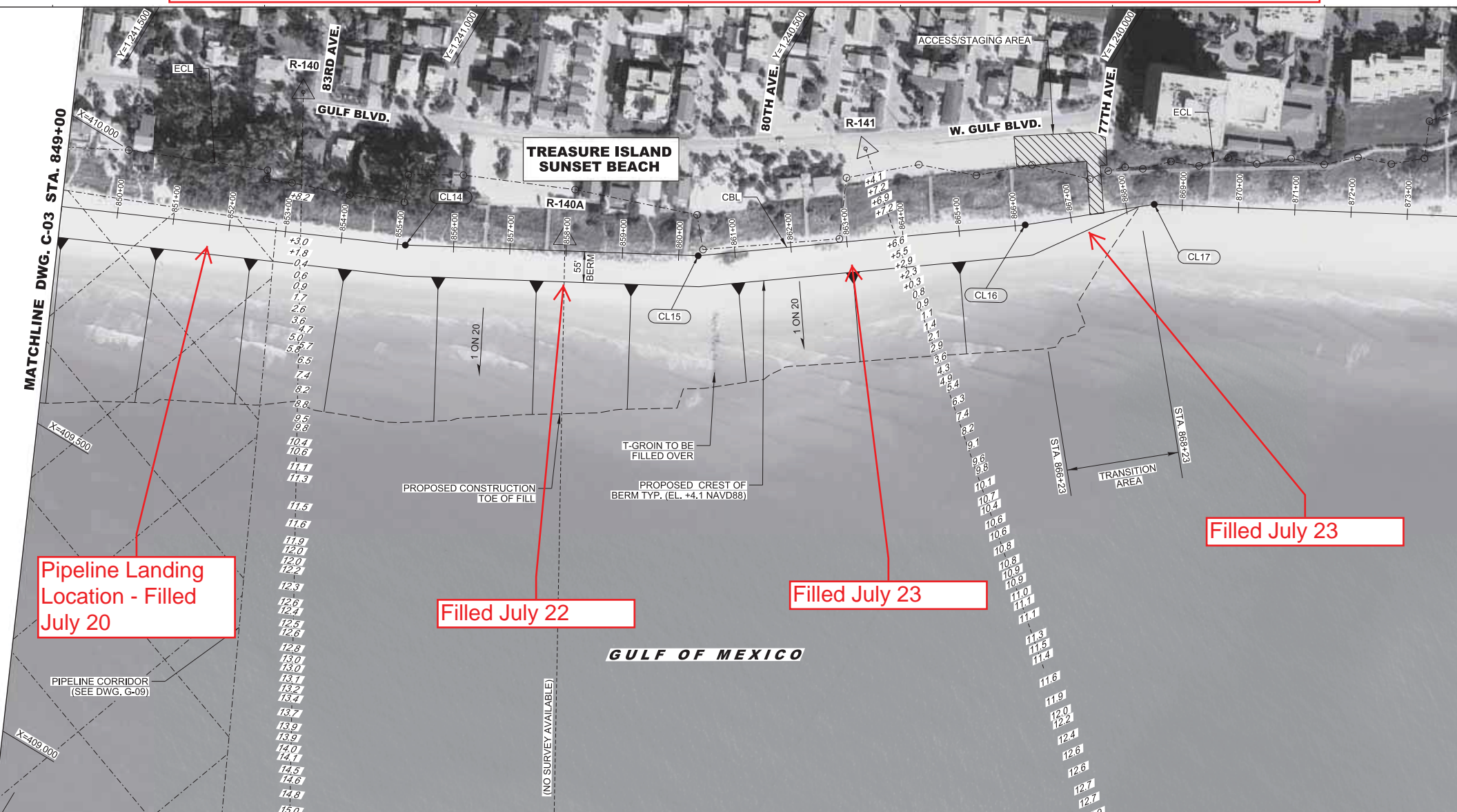
CENTRAL SUNSET BEACH ACTUAL FILL DATES - SUNSET BEACH FILL COMPLETED ON 3 AUGUST 2014



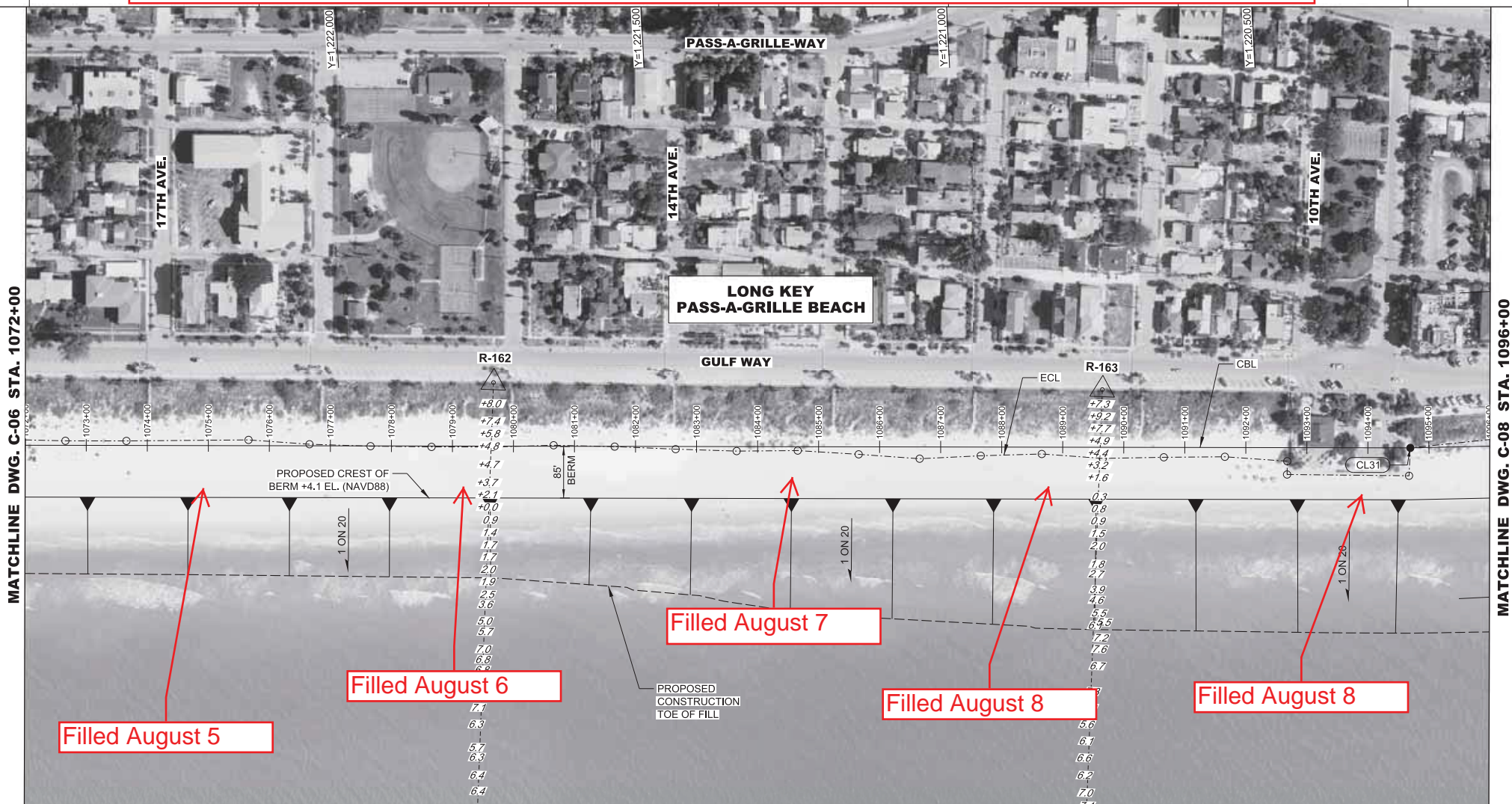
NORTHERN SUNSET BEACH ACTUAL FILL DATES - SUNSET BEACH FILL COMPLETED ON AUGUST 3, 2014



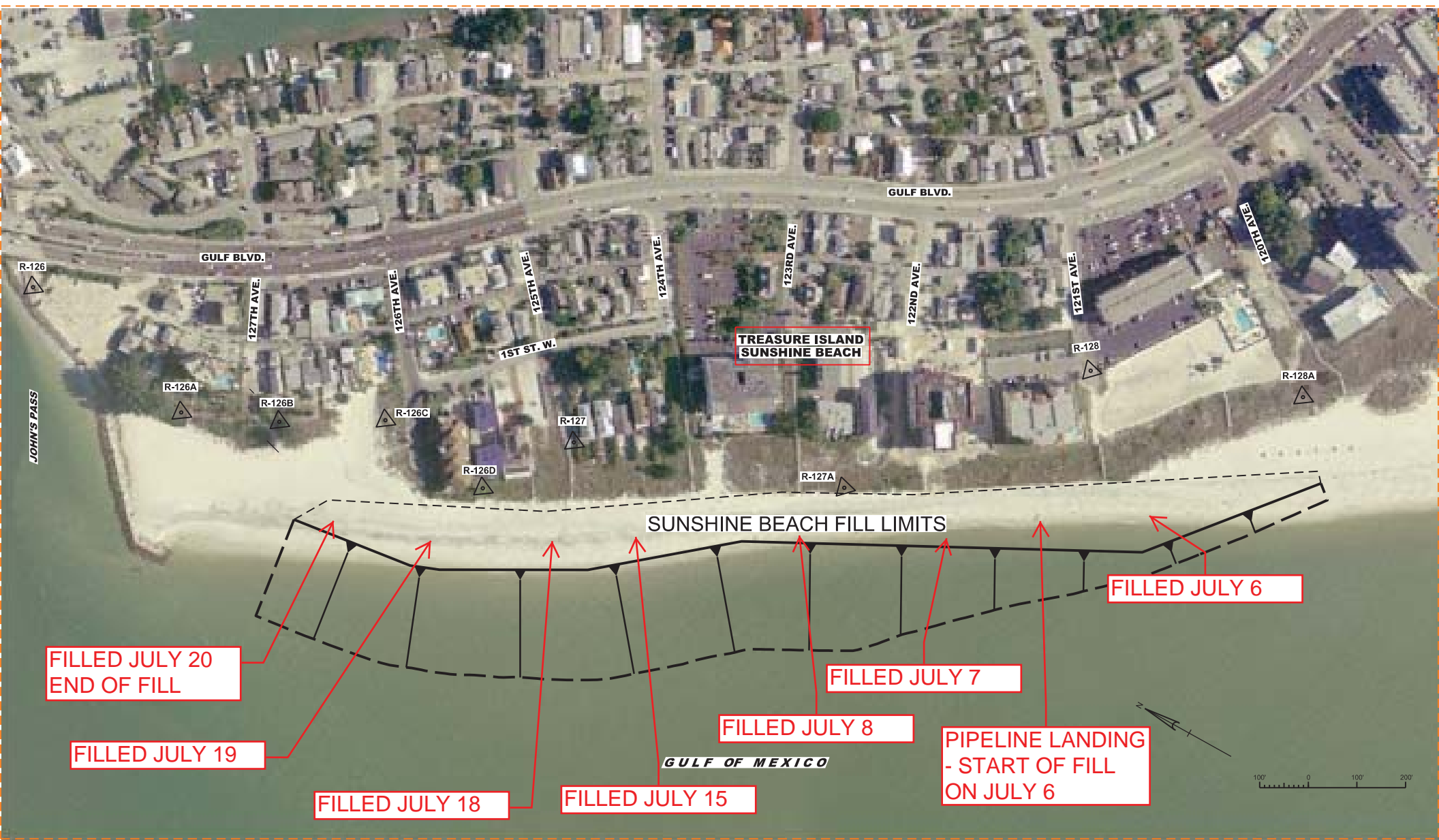
SOUTHERN SUNSET BEACH ACTUAL FILL DATES - SUNSET BEACH FILL COMPLETED ON 3 AUGUST 2014



CENTRAL PASS-A-GRILLE BEACH - ACTUAL PROGRESS BY FILL LOCATION - AS OF AUGUST 13, 2014

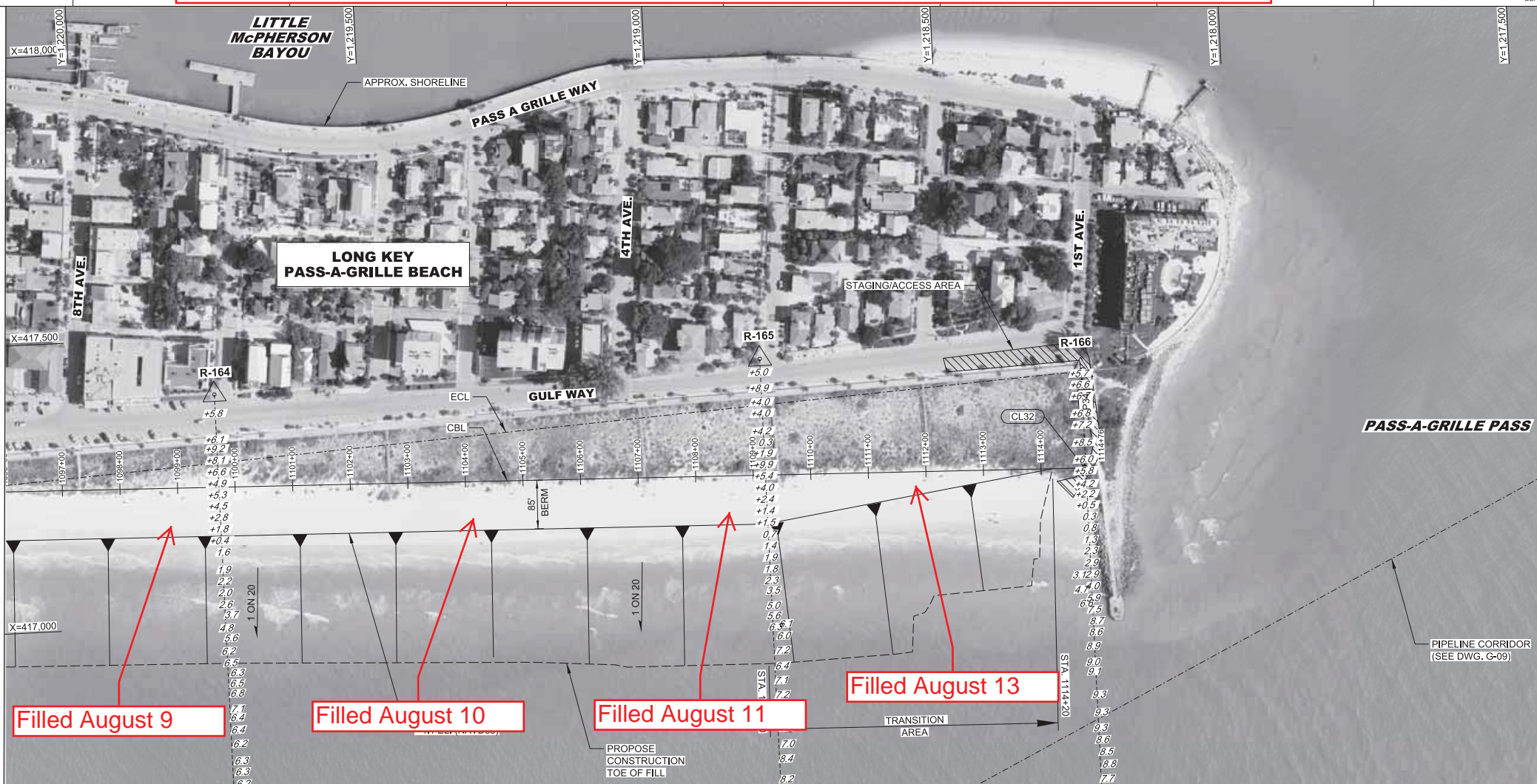


SUNSHINE BEACH - PROGRESS MAP BY FILL LOCATION - AS OF JULY 21, 2014 (FILLING COMPLETED JULY 20, 2014)

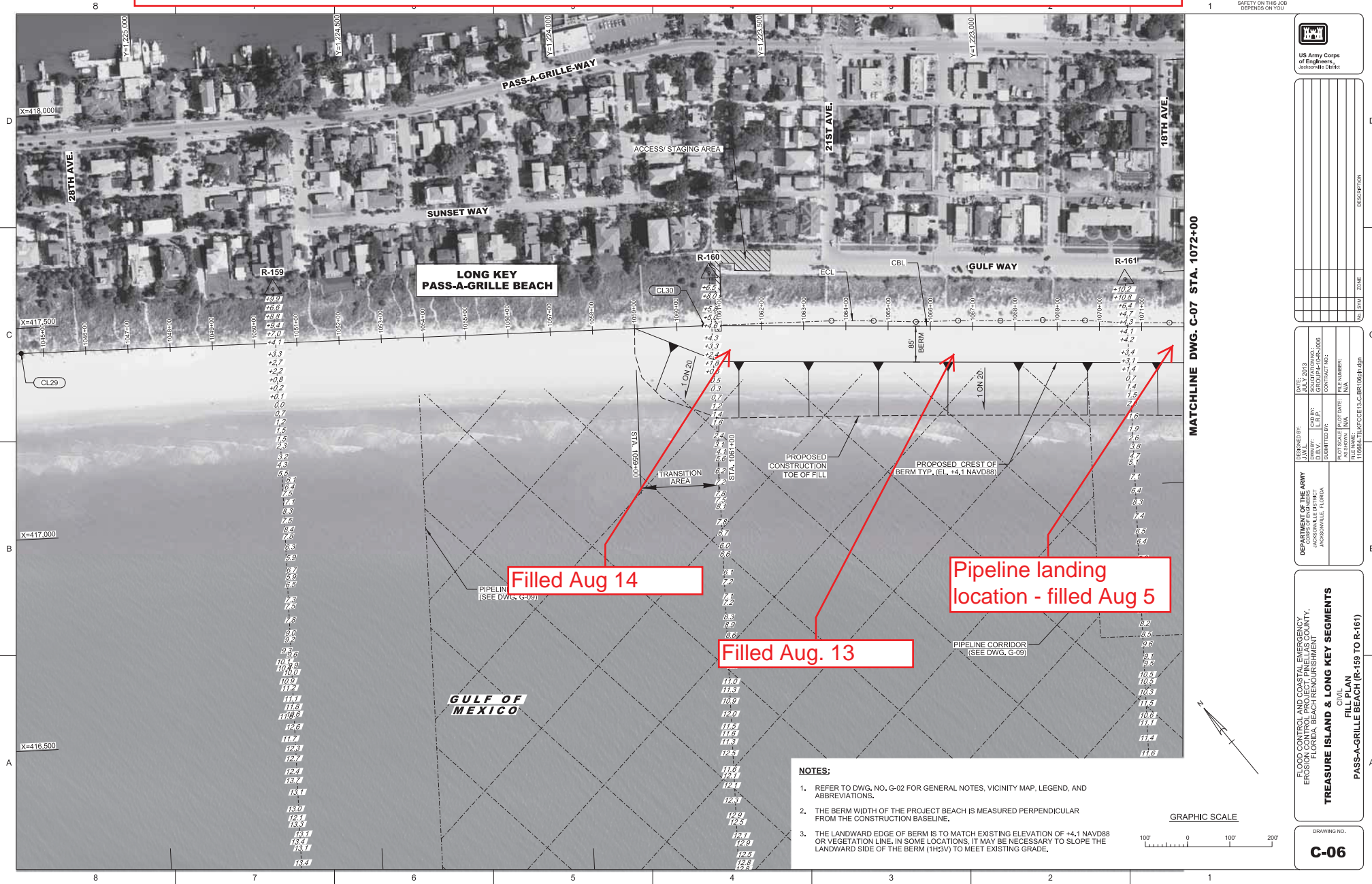


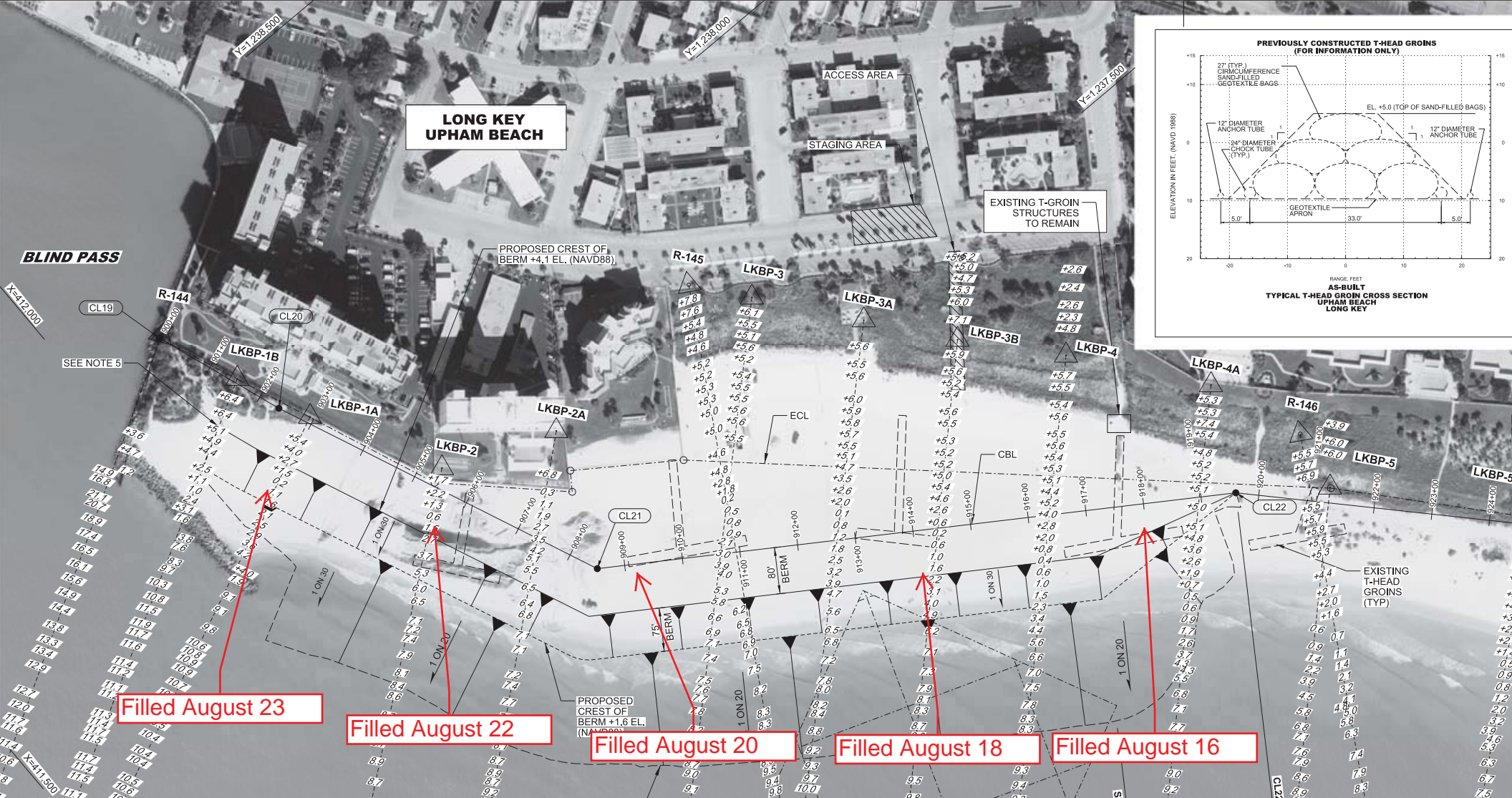
SOUTH PASS-A-GRILLE BEACH - ACTUAL FILL DATES BY LOCATION - AS OF AUGUST 13, 2014

MATCHLINE DWG. C-07 STA. 1096+00



NORTH PASS-A-GRILLE BEACH - ACTUAL PROGRESS BY FILL LOCATION - AS OF AUGUST 14, 2014





2014 Treasure Island Long Key Nourishment Project

Project Overview

- Project Type – Beach Fill (~555,000 cubic yards)
- Type of Dredge – Hydraulic Dredge
- Construction Cost - \$16,182,000
- Construction Administration – U.S. Army Corps of Engineers (Corps)
- Construction Contractor – Weeks Marine, Inc.
- Current Status – Nourishing Sunshine Beach
- Proposed Completion – between September 2014

July 11, 2014 – Initial pumping of sand began on July 6th at 4 PM near 121st Street. Equipment problems the next two days resulted in pumping interruptions (starts and stops): Stopped on July 7th at 3 PM, started July 9 at 3 AM, stopped July 10 at 10 AM at station 718 (123rd Ave). Pumping is expected to resume later today. The beach is currently fenced off from 122nd to 125th Avenues.

July 25, 2014- Pumping halted Wednesday July 16th 10 AM due to weather. The Sunshine Beach segment was finished on July 20th. Pumping began on Sunset Beach July 21st finishing the south segment on July 24th and began the central segment. Weeks Marine has decided to do the Pass-A-Grille Segment before they do the Upham Segment.

July 30, 2014- Pumping ceased Monday due to equipment problems and weather near R138.5. Pumping resumed July 30th.

August 5, 2014- Sunset Beach was finished August 3, 2014. The beach was cleared of equipment by Monday August 4, 2014. They began mobilization to Pass-A-Grille Monday and began pumping around 6:30 PM August 6, 2014. Thus far they have completed 800 ft of beach fill at Pass-A-Grille.

August 11, 2014- Standby for unloaded repair morning of 08/11/2014 at 4th Ave station 1106. Submerged pipe is installed at Upham.

August 12, 2014

Down for weather 2 days of work left

August 22, 2014

400ft left on Upham. Fill should be completed over night.

August 27, 2014

The nourishment of Upham was completed at 3:00 AM August 23. Tilling for sunset beach was completed August 26.

Treasure Island & St. Pete Beach (Long Key) Beach Nourishment

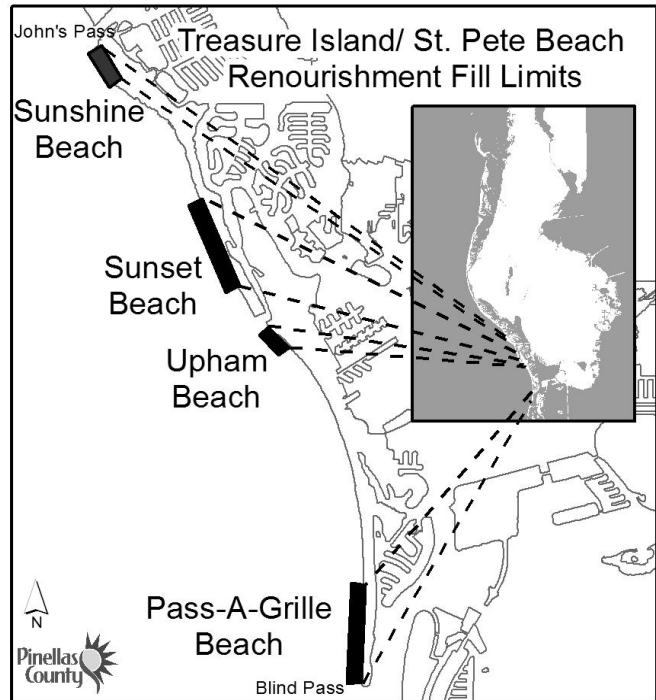
Expected Duration: May 2014 to August

TENTATIVE PROJECT SCHEDULE

- Mobilization: Early May - Early June
- Sunshine Beach: Late May - Mid June
- Sunset Beach : Mid June - Early July
- Upham Beach: Early July - Late July
- Pass-A-Grille Beach: Late July - Early Aug
- Completed September 30, 2014 (Latest)

PROJECT SUMMARY

- Project Type: Beach Fill; Hydraulic Dredge, 24" cutterhead
- Estimated Sand Volume: 555,000 yd³; Const. Cost. \$16,182,000
- Construction Administration: U.S. Army Corps of Engineers
- Construction Contractor: Weeks Marine Inc.
- Local Sponsor: Pinellas County



CONSTRUCTION

- Sunshine Beach: Approximately 127th Av - 120th Ave W
- Sunset Beach: Approximately Blind Pass Rd. - 77th Ave
- Upham Beach: Approximately 71st Ave - 67th Ave
- Pass-A-Grille: Approximately 23rd Ave - 1st Ave
- Sand Source: Egmont Shoal ~8,000 ft offshore
- Sand piped from near-shore barge onto beach
- Construction activity on beaches will **operate 24 hours a day**. Expect noise & lights dusk - dawn. Safety backup alarms are exempt from noise regulations, please be patient.
- The active beach construction areas will be closed to the public.
- Sand ramps will provide safe public access over pipes to the shoreline.

Pinellas County contact: John Bishop (beaches@pinellascounty.org)

WEB LINK FOR PROJECT UPDATES:

http://www.pinellascounty.org/environment/coastalMngmt/treasure_island.htm



2014 Treasure Island and Long Key Beach Nourishment

John Bishop, Ph.D.
Coastal Manager

e-mail: beaches@pinellascounty.org

727/464-8766

Topics

- 
- An aerial photograph of a coastal city, likely Miami Beach, showing a wide sandy beach, a pier extending into the ocean, and a bridge in the background. The city is built along the coastline with various buildings and parking lots. The ocean is a vibrant blue-green color.
- Why Nourish Our Beaches
 - County Managed Beaches
 - TI/LK Nourishment History
 - Funding
 - Project Team
 - USACE Project Presentation

Why Nourish Our Beaches



Most Important Reason!

1. Storm Protection

- Saves Lives
- Upland Infrastructure
- Property





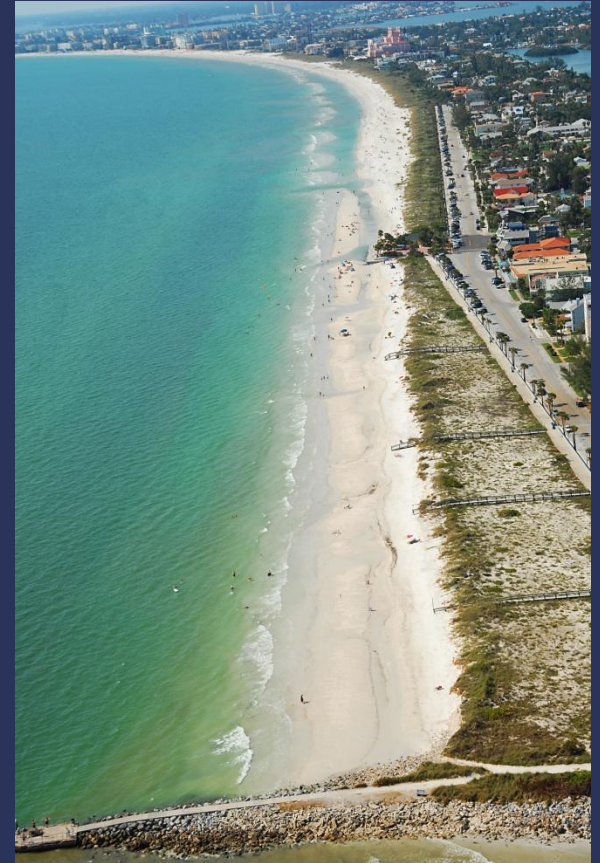
STORM PROTECTION

SUNSET BEACH

STORM PROTECTION!



Upham Beach, 1994



Pass-A-Grille, June 2012

Sunset Beach

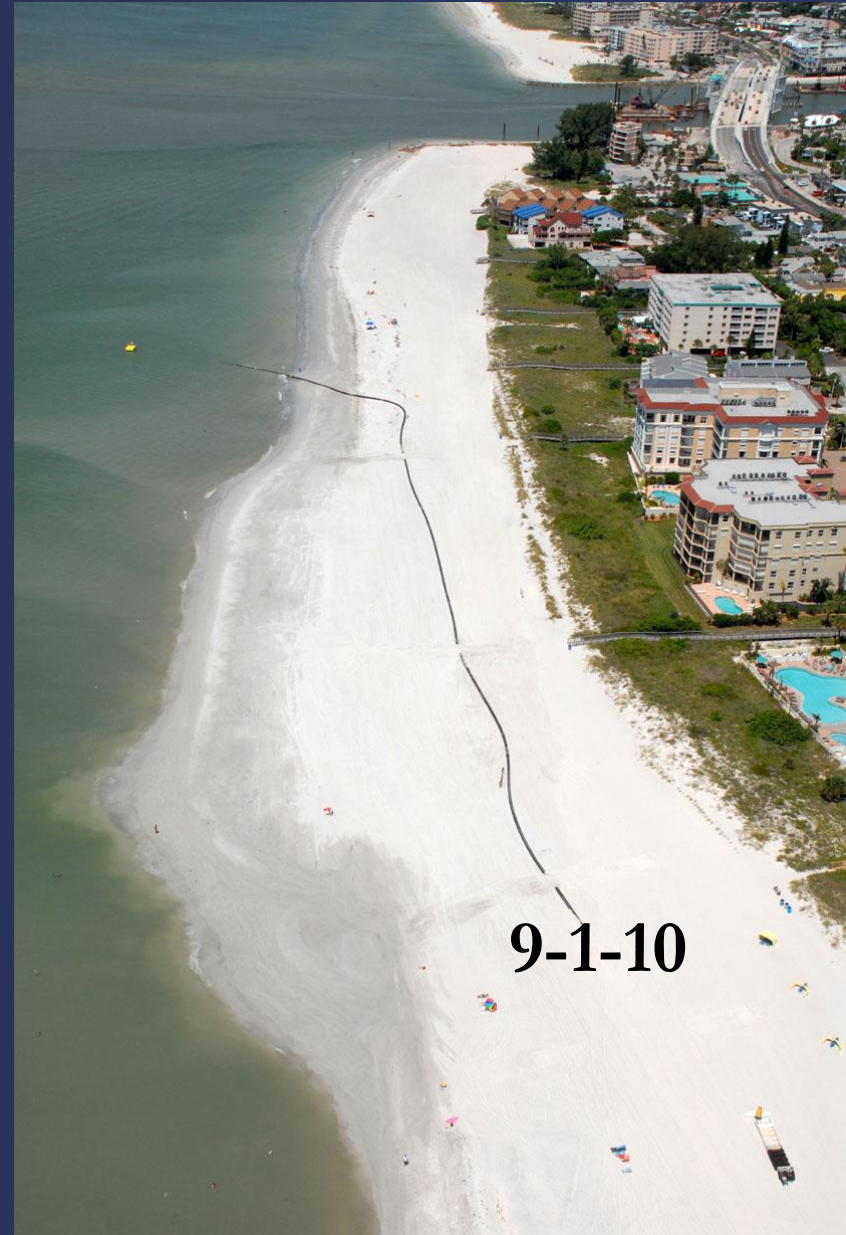


Prenourishment
9-1-10



Postnourishment
10-1-10

Sunshine Beach

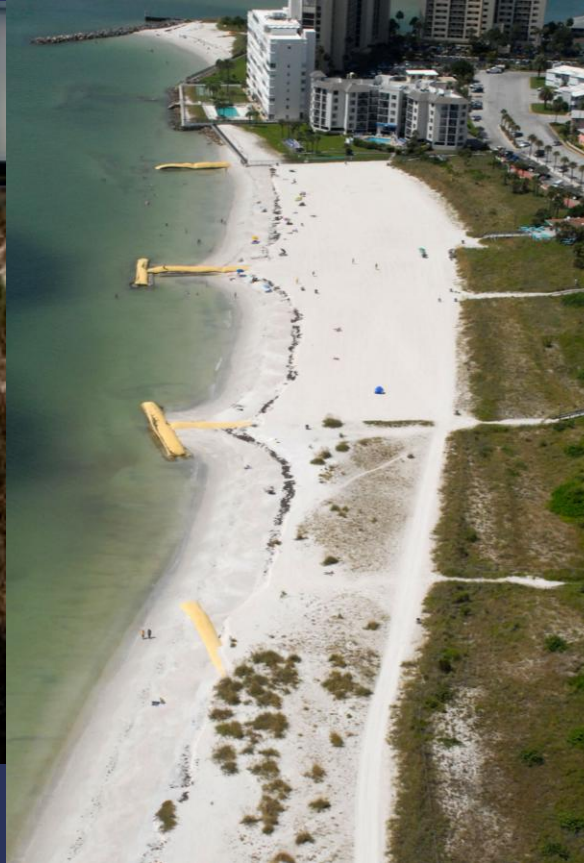


Upham Beach

**Pre-Nourishment
1994**



**Pre-Nourishment
Sept 15, 2010**

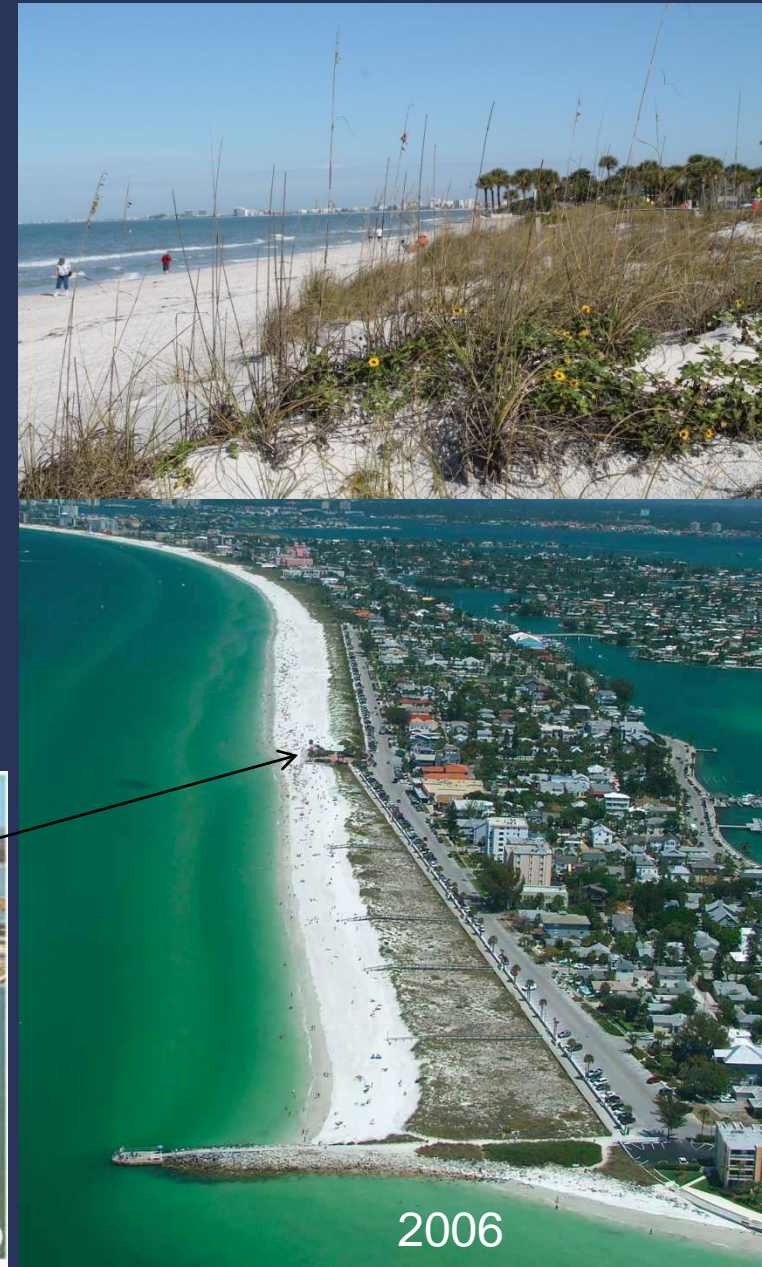


**Post Nourishment
Nov 1, 2010**



Pass-A-Grille Beach

- One-mile Long Public Beach
- Highly Erosive 1940s-50s
- Groins & Seawall Installed by 1960s
- County Management Began in 1980s
- Accreted Beach Stabilized with Sea Oats in late 1980s
- Nourishment History
 - 1986: (post Elena) : 73,000 yds³, Pass-A-Grille Channel
 - 1991: 100,000 yds³, Blind Pass
 - 2004: (post storms): 95,000 yds³, Pass-A-Grille Channel



Pass-A-Grille Beach

June 25, 2012



June 26, 2012



Economic Benefits!



2. Pinellas County Tourism (Data Research Services, Inc. . Analysis for 2009)

- 74.2% of Visitors Come for the Beaches
- \$2.794 B - Total Economic Impact
- Over 35,800 - Jobs Supported
- \$88.4 M - State & Local Taxes Paid

Another Reason to Nourish Our Beaches...

3. Environmental Benefits

- Habitat
 - Marine Turtles
 - Shorebirds



County Managed Beaches

- Honeymoon Island
- Sand Key
- Treasure Island
 - Sunshine Beach
 - Sunset Beach
- Long Key
 - Upham Beach
 - Pass-a-Grille Beach
- Mullet Key (Ft. DeSoto Park)

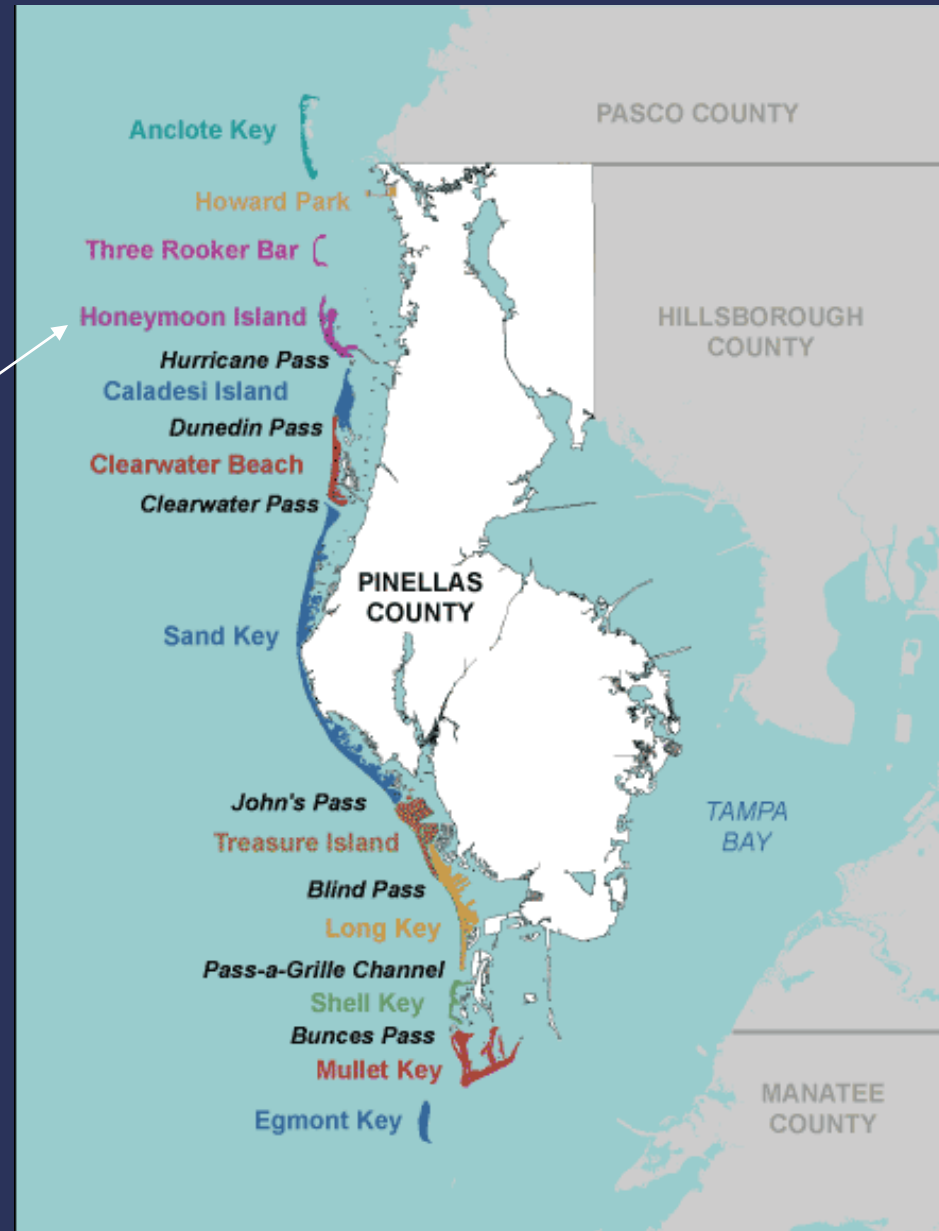


Non-Federally Authorized Project

Honeymoon Island

State Funding

- Construction 100%
- Non-construction 75%
(design, permitting, etc.)



Federally Authorized Projects

Sand Key

Treasure Island

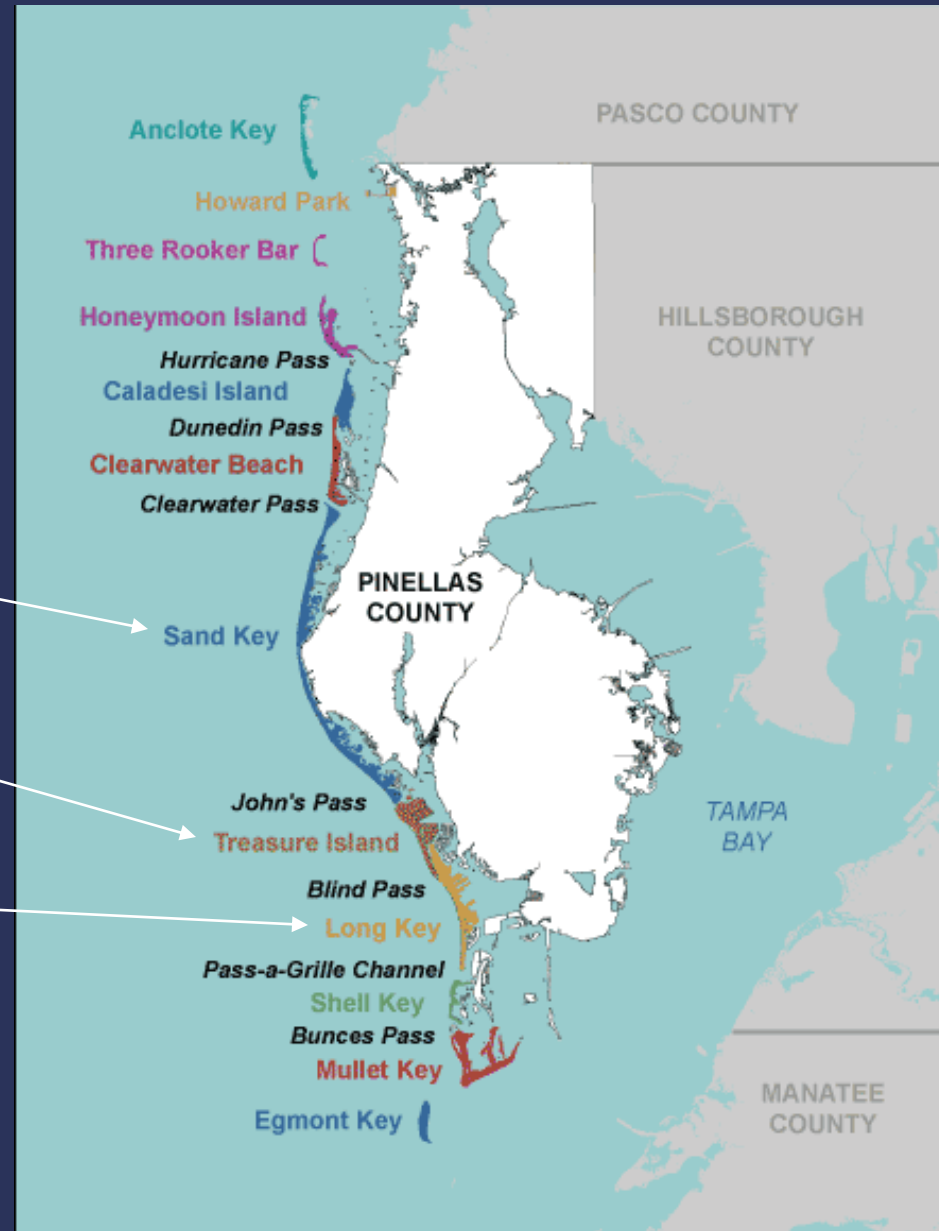
Long Key

Funding

~60% Federal

~20% State

~20% County



Treasure Island

Nourishment History

- 1969
- 1971, 1972, 1976, 1978
- 1981, 1983, 1986
- 1991, 1996
- 2000, 2004, 2006, 2010

Current Nourishment Interval
~4 Years



Sunset Beach N to S (9-15-10)



Sunset Beach S to N. (9-15-10)

Long Key

Nourishment History

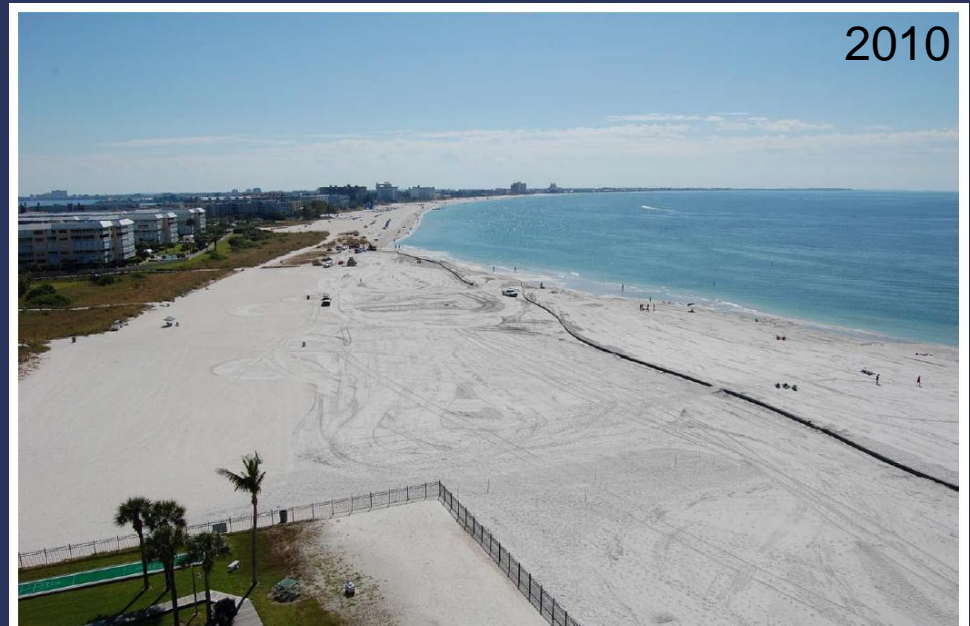
Upham Beach

- 1980, 1986
- 1991, 1996
- 2000, 2004, 2006, 2010

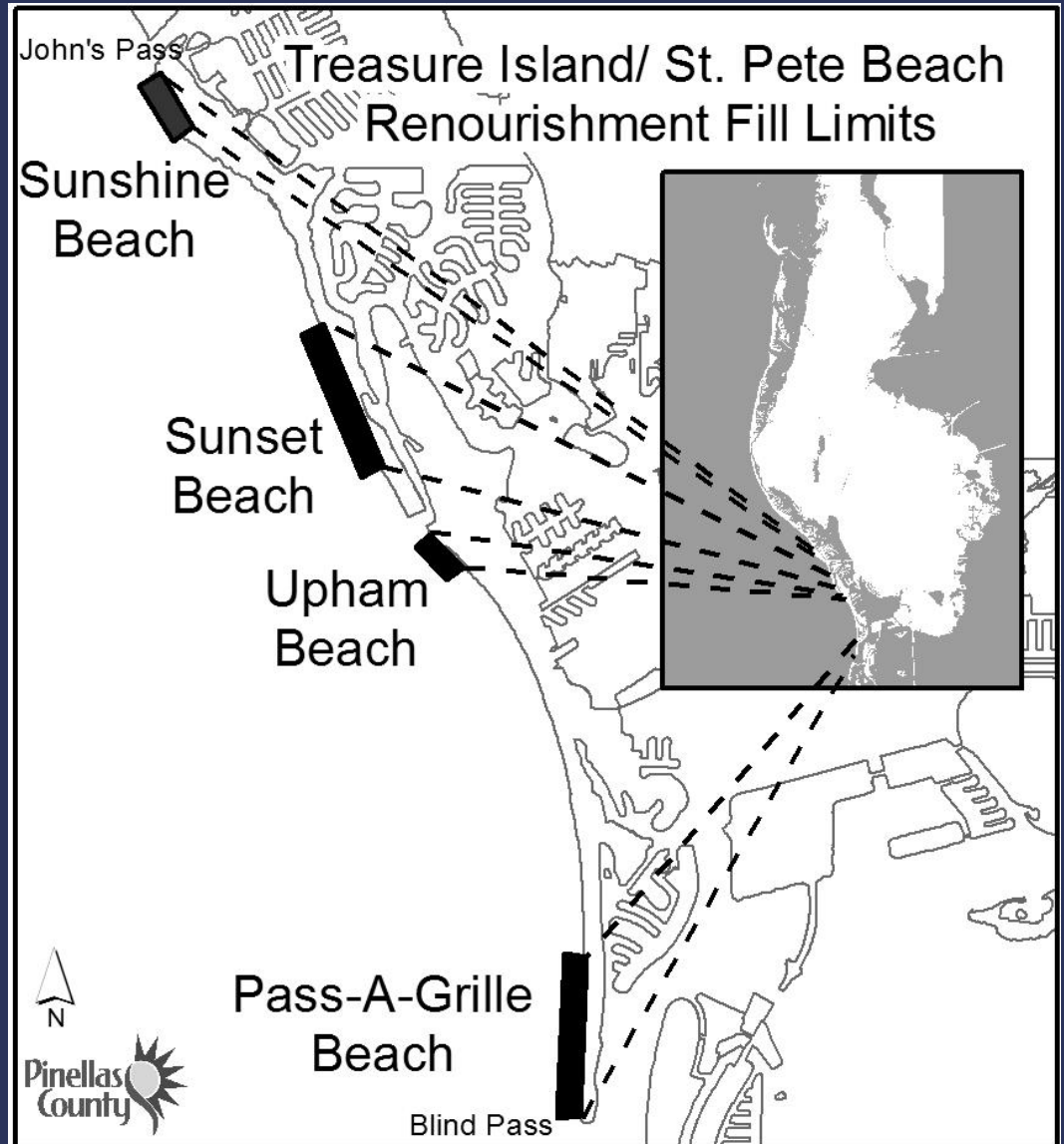
Pass-A-grille

- 1986
- 1991
- 2004

Current Nourishment Interval
~4 Years



Treasure Island and Long Key (TI/LK) 2014 Nourishment Project Area



TI/LK 2010

Sunshine and Sunset Beach

- 7,000 feet
- 253,000 cubic yards of sand
- Sand Source: John's Pass
- \$3.5 million

TI/LK 2010

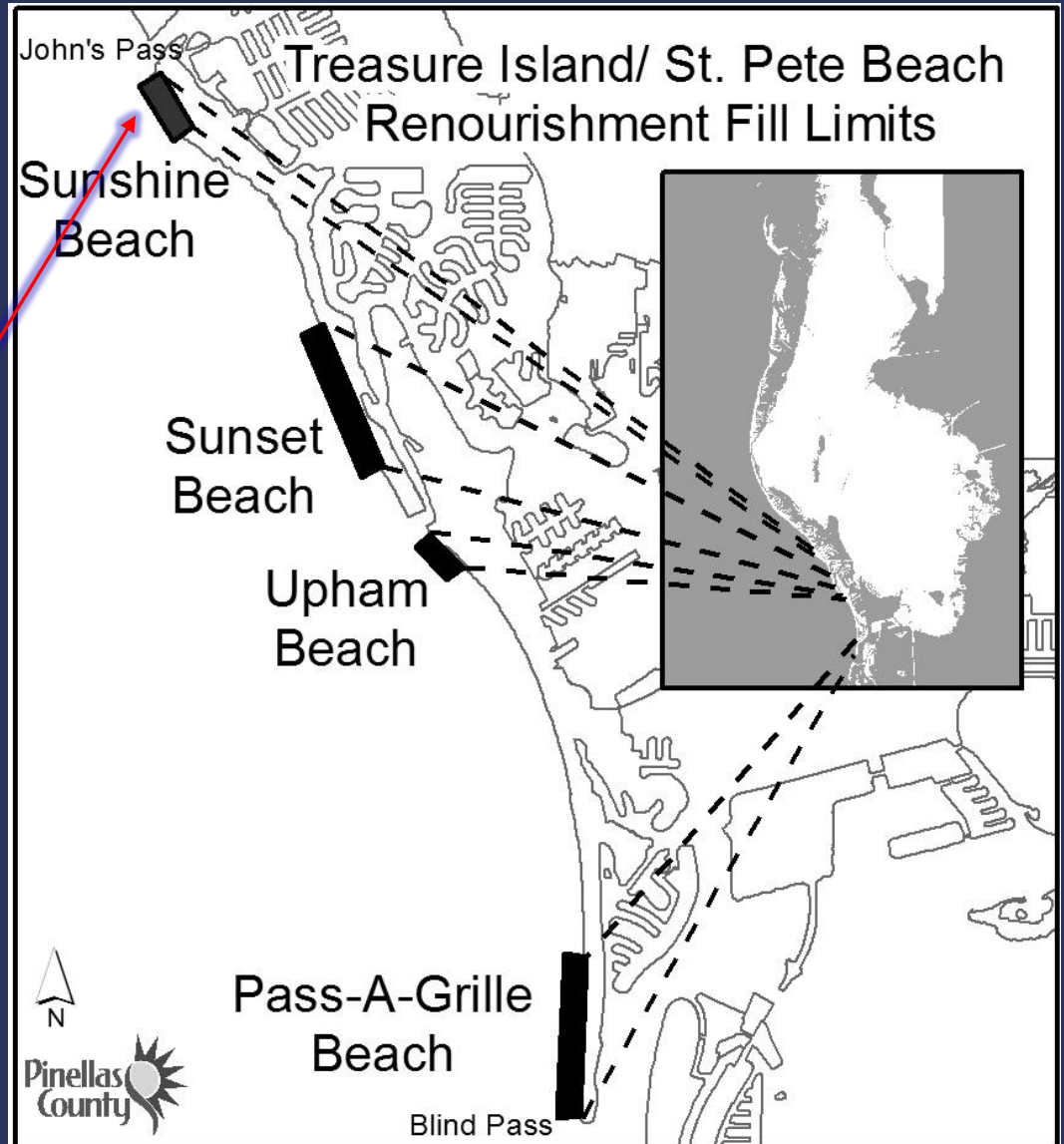
Upham Beach

- 2,000 feet
- 160,000 cubic yards of sand
- Sand Source: Blind Pass
- \$1.73 million

Treasure Island Nourishment

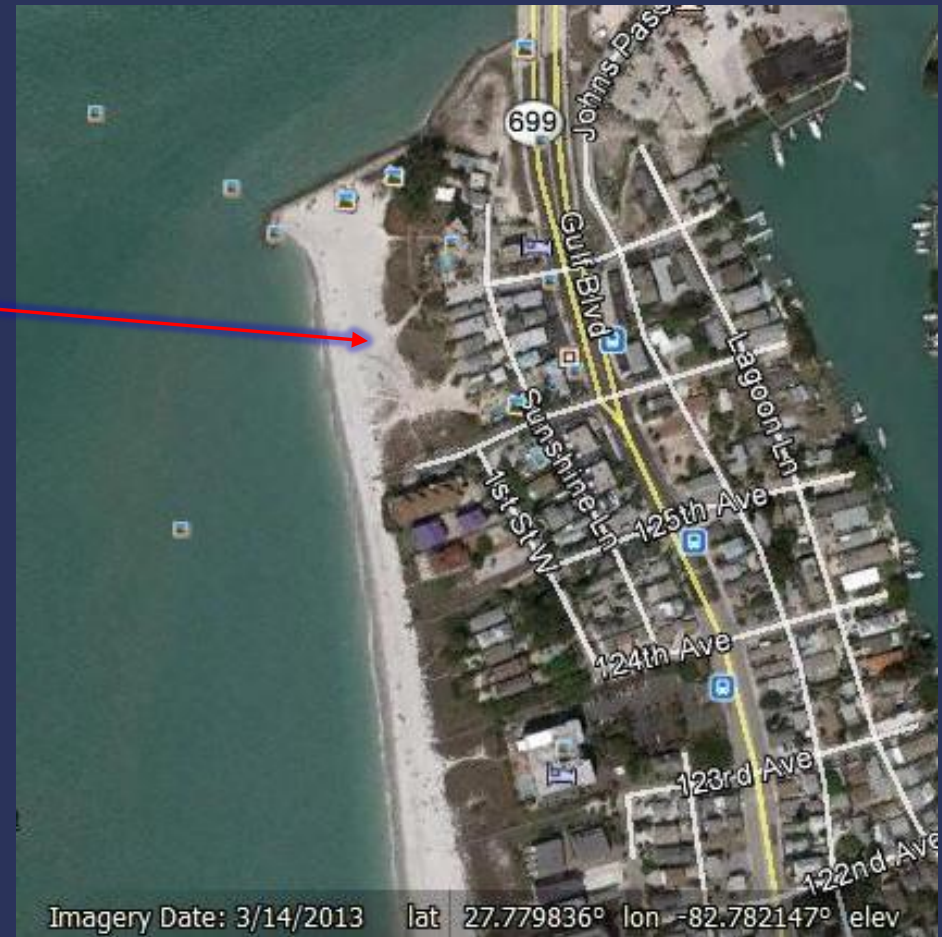
Starting Location

Sunshine Beach
127th Ave.



TI/LK 2014 Nourishment

Sunshine Beach
127th Ave.



TI/LK 2014

Project Funding

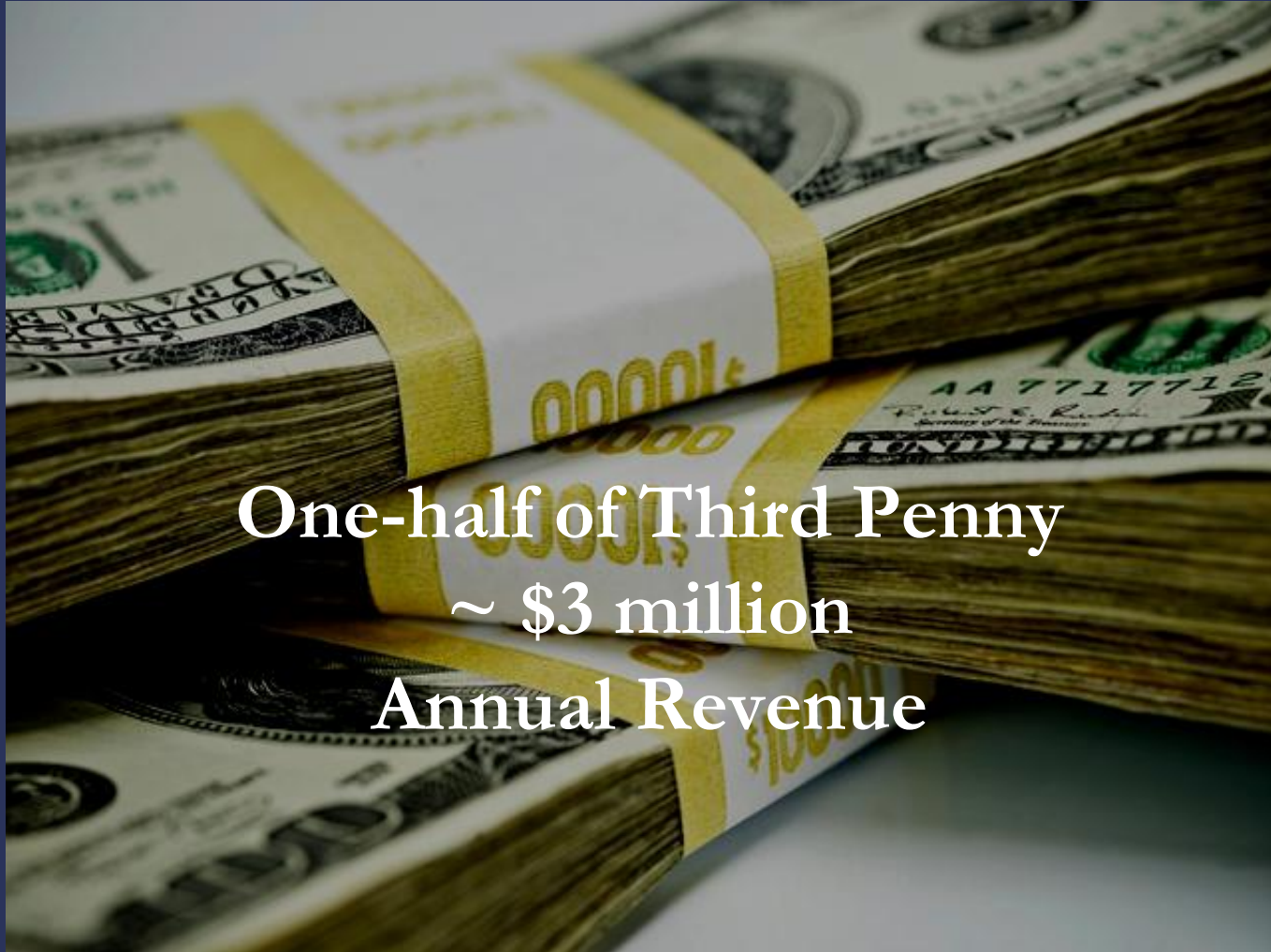
Treasure Island

- 58.0% Federal
- 42.0% Non-Federal

Long Key

- 60.8% Federal
- 39.2% Non-Federal

Coastal Management Program Funding from Tourist Development (Bed) Tax



One-half of Third Penny
~ \$3 million
Annual Revenue

TILK 2014 Project Team

- Pinellas County
 - Local Sponsor
- U.S. Army Corps of Engineers (USACE)
 - design, permitting, construction
- Construction Contractor for USACE
 - WEEKS MARINE, INC.

QUESTIONS



John Bishop, Coastal Manager 727- 464 - 8766
e-mail: beaches@pinellascounty.org

Web Link to Updates:

http://www.pinellascounty.org/environment/coastalMngmt/treasure_island.htm