



2012 Sand Key Beach Nourishment

Andy Squires
Coastal Manager

e-mail: beaches@pinellascounty.org

727/464-4633

Topics

- 
- An aerial photograph of a coastal city, likely Miami Beach, showing a wide sandy beach, a long pier extending into the turquoise ocean, and a dense line of buildings along the shore. The sky is clear and blue.
- Why Nourish Our Beaches
 - County Managed Beaches
 - Sand Key Nourishment History
 - Funding
 - Project Team
 - USACE Project Presentation

Why Nourish Our Beaches



Most Important Reason!

1. Storm Protection
 - Saves Lives
 - Upland Infrastructure
 - Property



STORM PROTECTION!



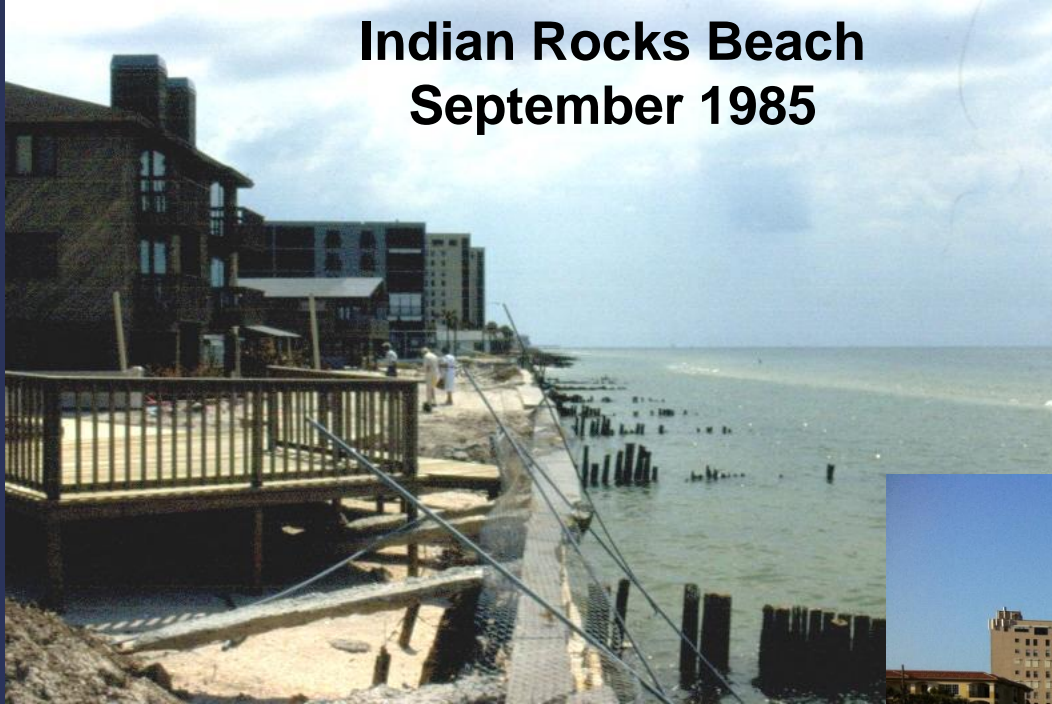
Clearwater, September 1985



Clearwater, June 2011

STORM PROTECTION!

**Indian Rocks Beach
September 1985**



**Indian Rocks Beach
June 2011**



STORM PROTECTION!

**Indian Shores
September 1985**



**Indian Shores
June 2011**



STORM PROTECTION!



Economic Benefits!



2. Pinellas County Tourism (Data Research Services, Inc. . Analysis for 2009)

- 74.2% of Visitors Come for the Beaches
- \$2.794 B - Total Economic Impact
- Over 35,800 - Jobs Supported
- \$88.4 M - State & Local Taxes Paid

Another Reason to Nourish Our Beaches...

3. Environmental Benefits

- Habitat
 - Marine Turtles
 - Shorebirds



County Managed Beaches

- Honeymoon Island
- Sand Key
- Treasure Island
 - Sunshine Beach
 - Sunset Beach
- Long Key
 - Upham Beach
 - Pass-a-Grille Beach
- Mullet Key (Ft. DeSoto Park)

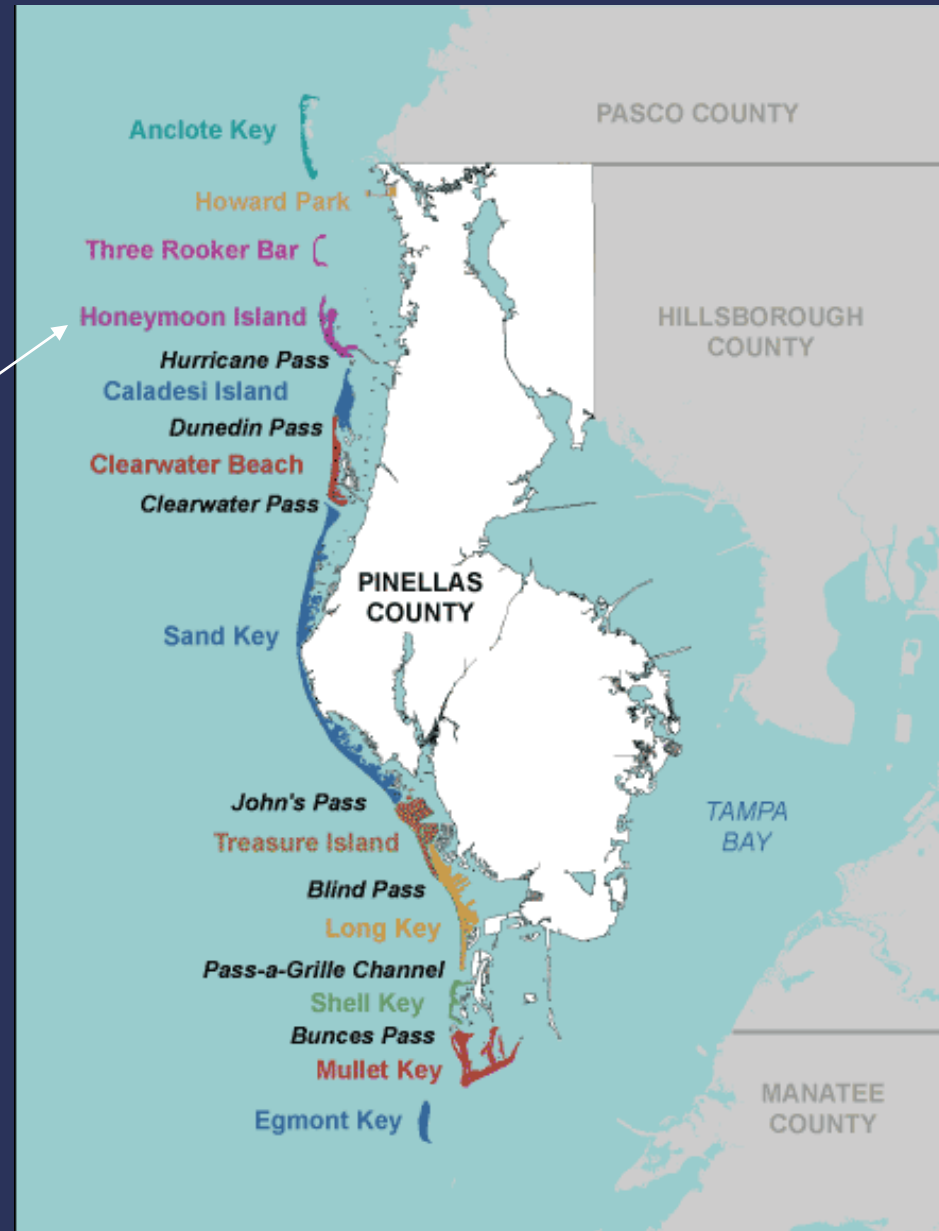


Non-Federally Authorized Project

Honeymoon Island

State Funding

- Construction 100%
- Non-construction 75%
(design, permitting, etc.)



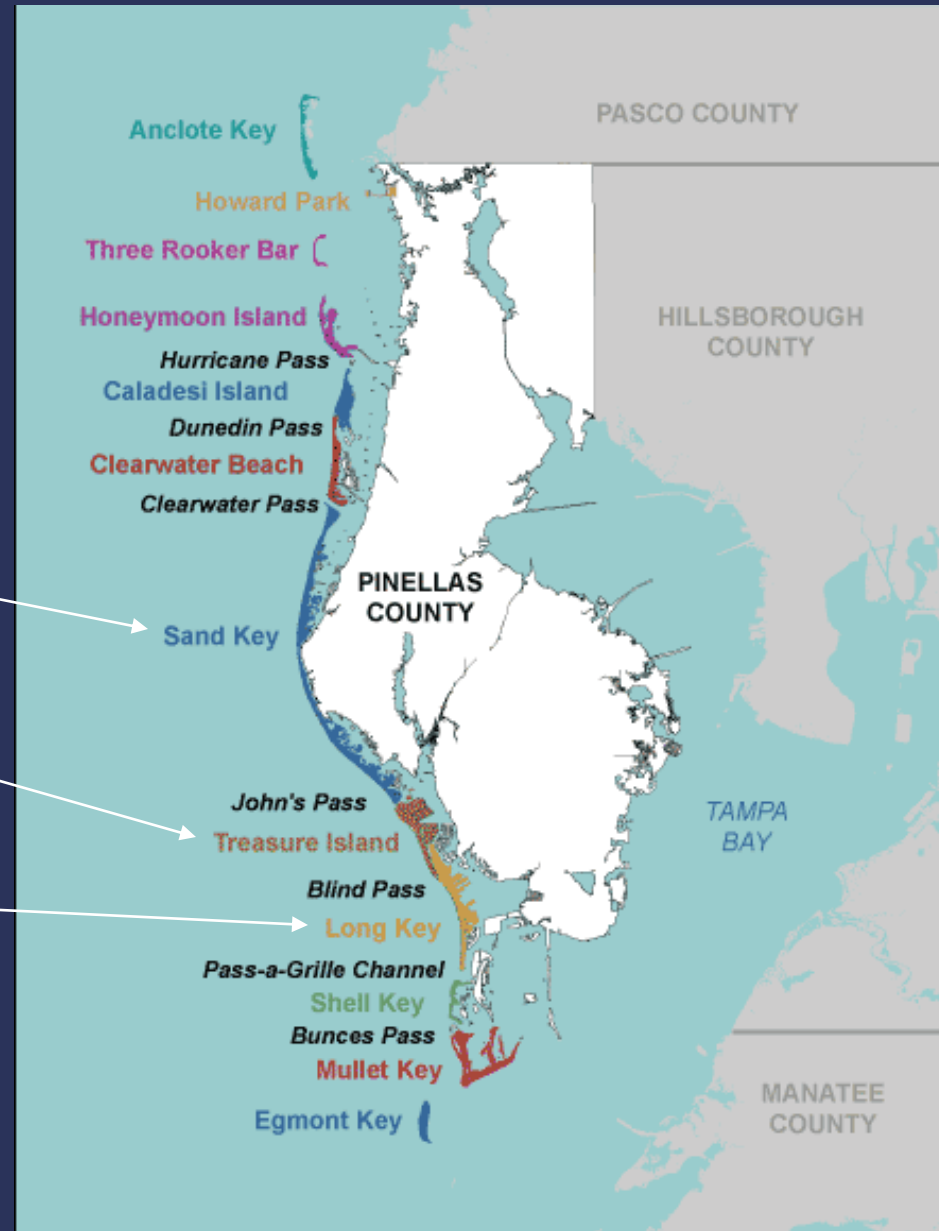
Federally Authorized Projects

Sand Key

Treasure Island

Long Key

Funding
~60% Federal
~20% State
~20% County



Sand Key

Nourishment History

- 1988 (Phase 1)
- 1990 (Phase 2)
- 1992 (Phase 3)
- 1998-99 (Phase 4)
- 2005-2006

Current Nourishment Interval
5-6 Years

Before and After Photographs

Before and After Photographs



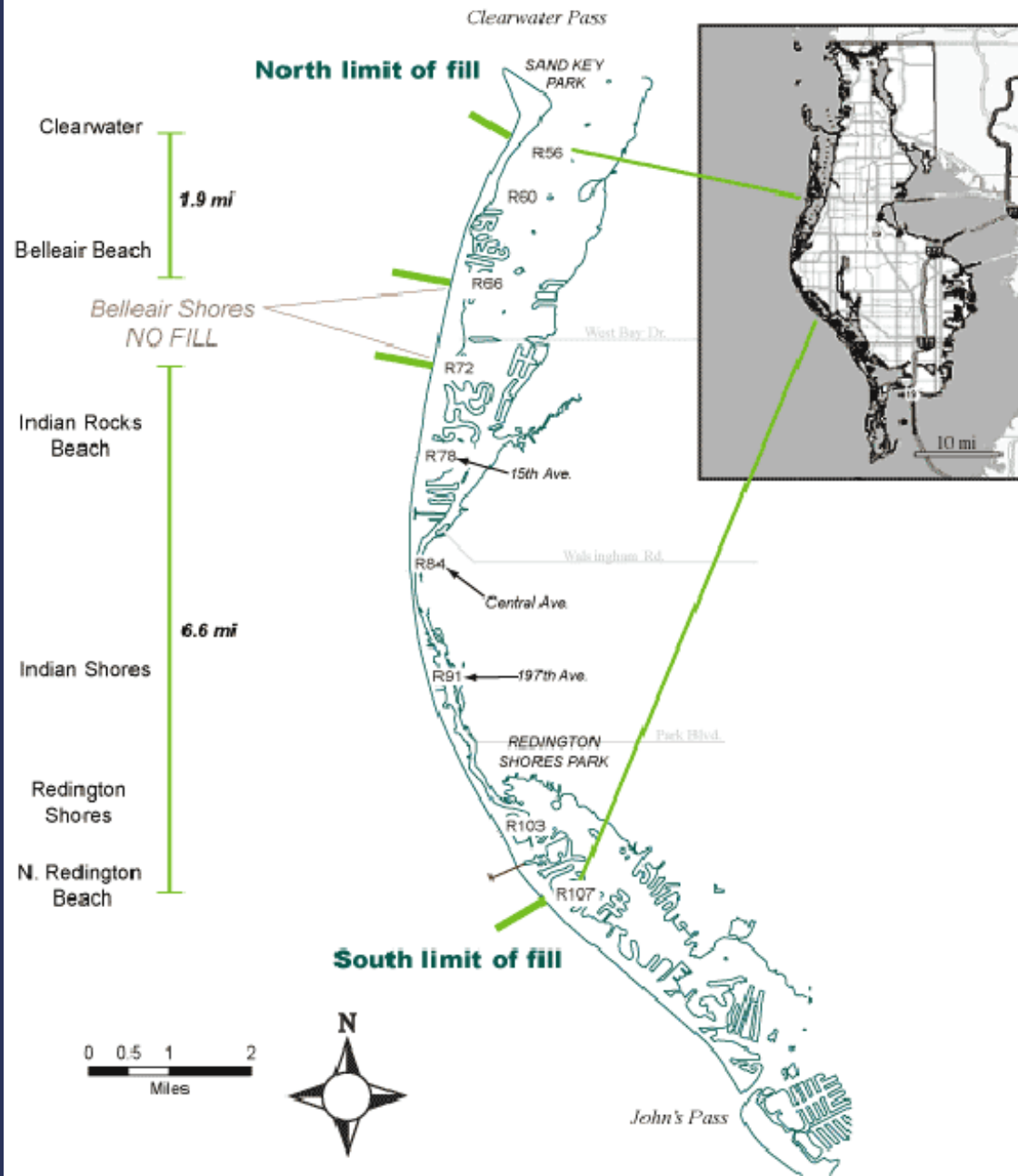
Before the Sand Key Renourishment Project in 1992



After the Sand Key Renourishment Project in 2000

[Close Window](#)

Sand Key Nourishment Project Area



Sand Key Phase I - 1988

Redington Shores & N. Redington Beach

- 1.5 miles (R99-R107)
- 300,000 cubic yards of sand
- Sand Source: John's Pass Ebb Shoal
- \$2.6 million

Sand Key Phase II - 1990

Indian Rocks Beach

- 2.6 miles (R72-R85)
- 1,300,000 cubic yards of sand
- Sand Source: Egmont Channel Shoal
- \$14.5 million

Sand Key Phase III - 1992

Indian Shores, Redington Shores &
North Redington Beach

- 4.2 miles (R85-R107)
- 850,000 cubic yards of sand
- Sand Source: Egmont Channel Shoal
- \$11.7 million

Sand Key Phase IV – 1998-99

Clearwater to N. Redington Beach
(excluding Belleair Shore)

- 8.7 miles (R56-R66, R72-R107)
- 2.6 million cubic yards of sand
- Sand Source: Egmont Channel Shoal
- \$24 million

Sand Key 2005-2006

Clearwater to N. Redington Beach
(excluding Belleair Shore)

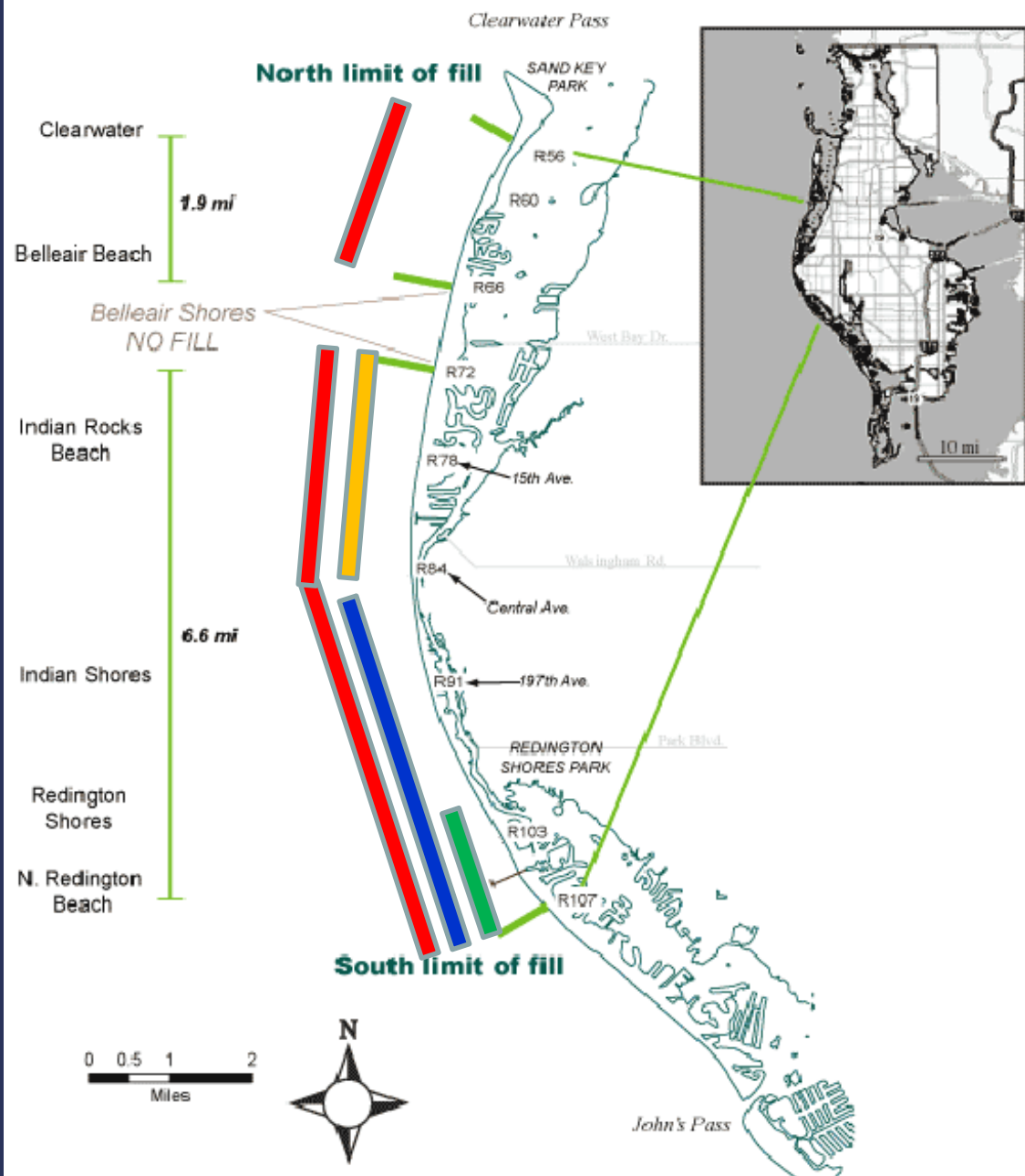
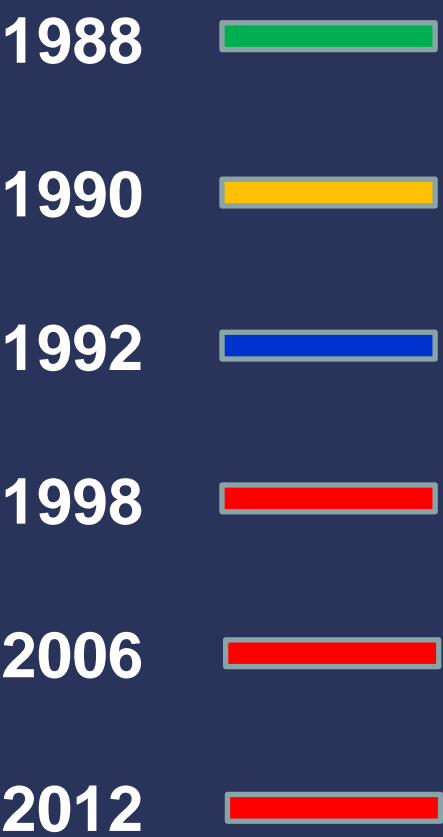
- 8.7 miles R56-R66, R71-R107
- 1.7 million cubic yards of sand
- Sand Source: Egmont Channel Shoal
- \$45 million

Sand Key 2012

Clearwater to N. Redington Beach
(excluding Belleair Shore)

- 8.7 miles R56-R66, R71-R107
- 1.3 million cubic yards of sand
- Sand Source: 12-14 miles offshore
- \$31.5 million

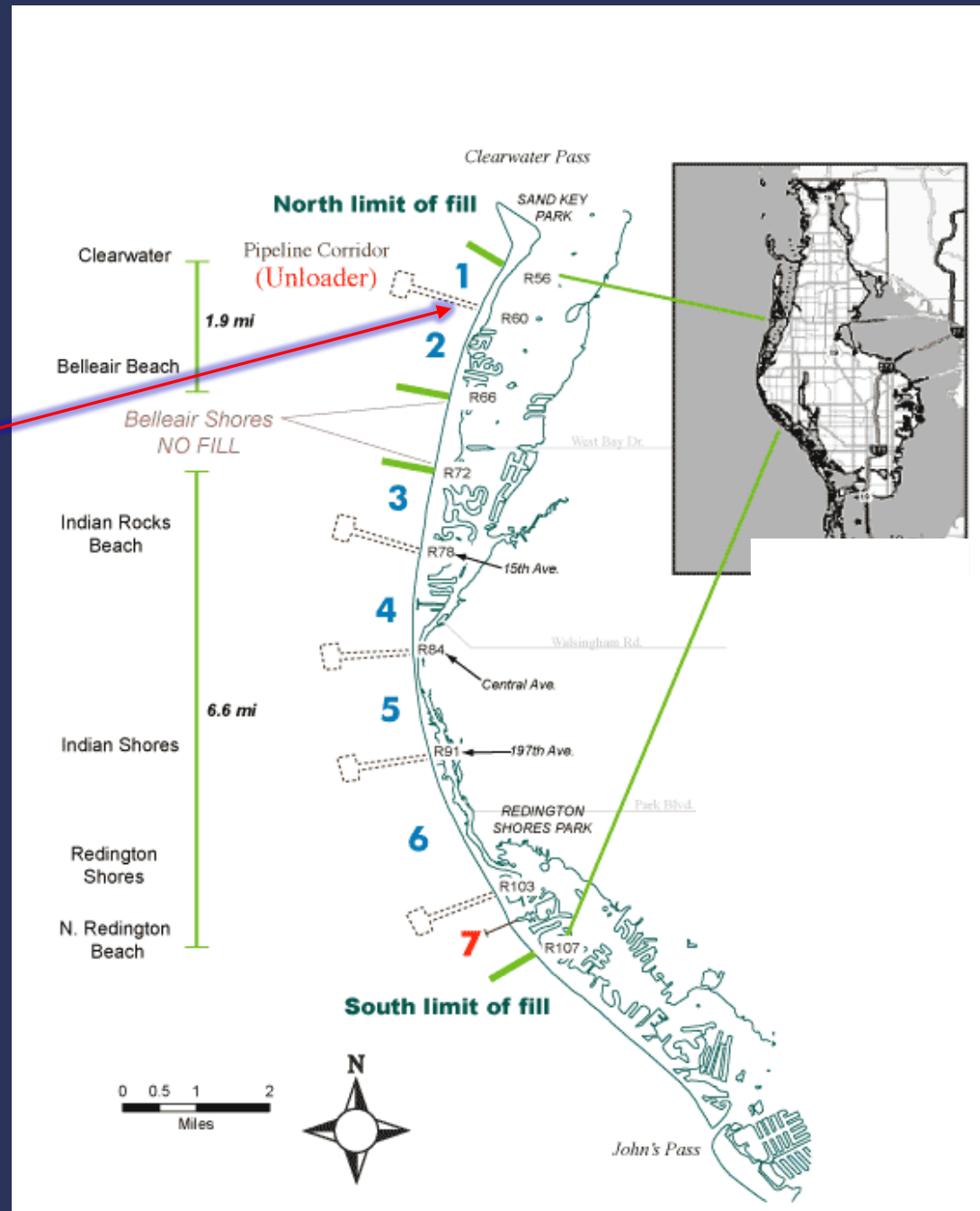
Sand Key Projects 1988-2012



Sand Key Nourishment

Starting Location
R60

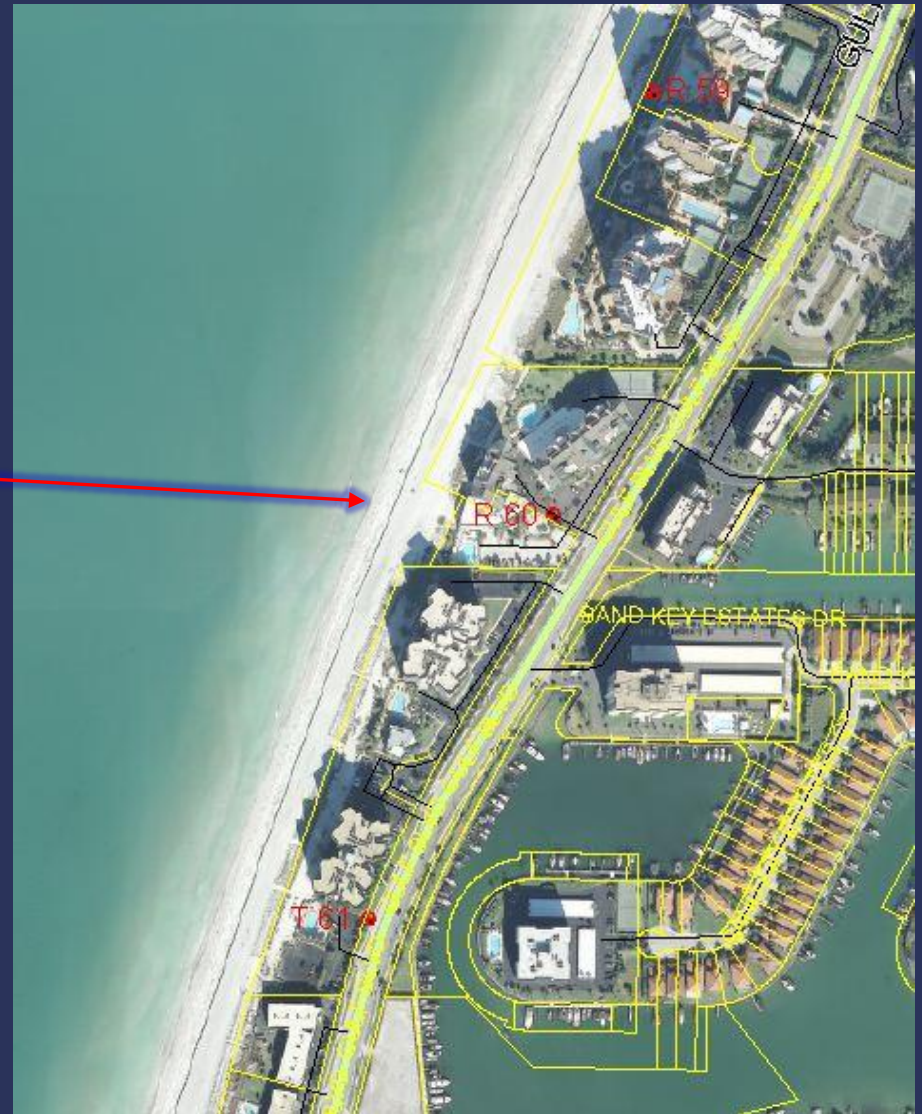
Cabana Club
1586 Gulf Blvd.



Sand Key Nourishment

Starting Location
R60

Cabana Club
1586 Gulf Blvd.

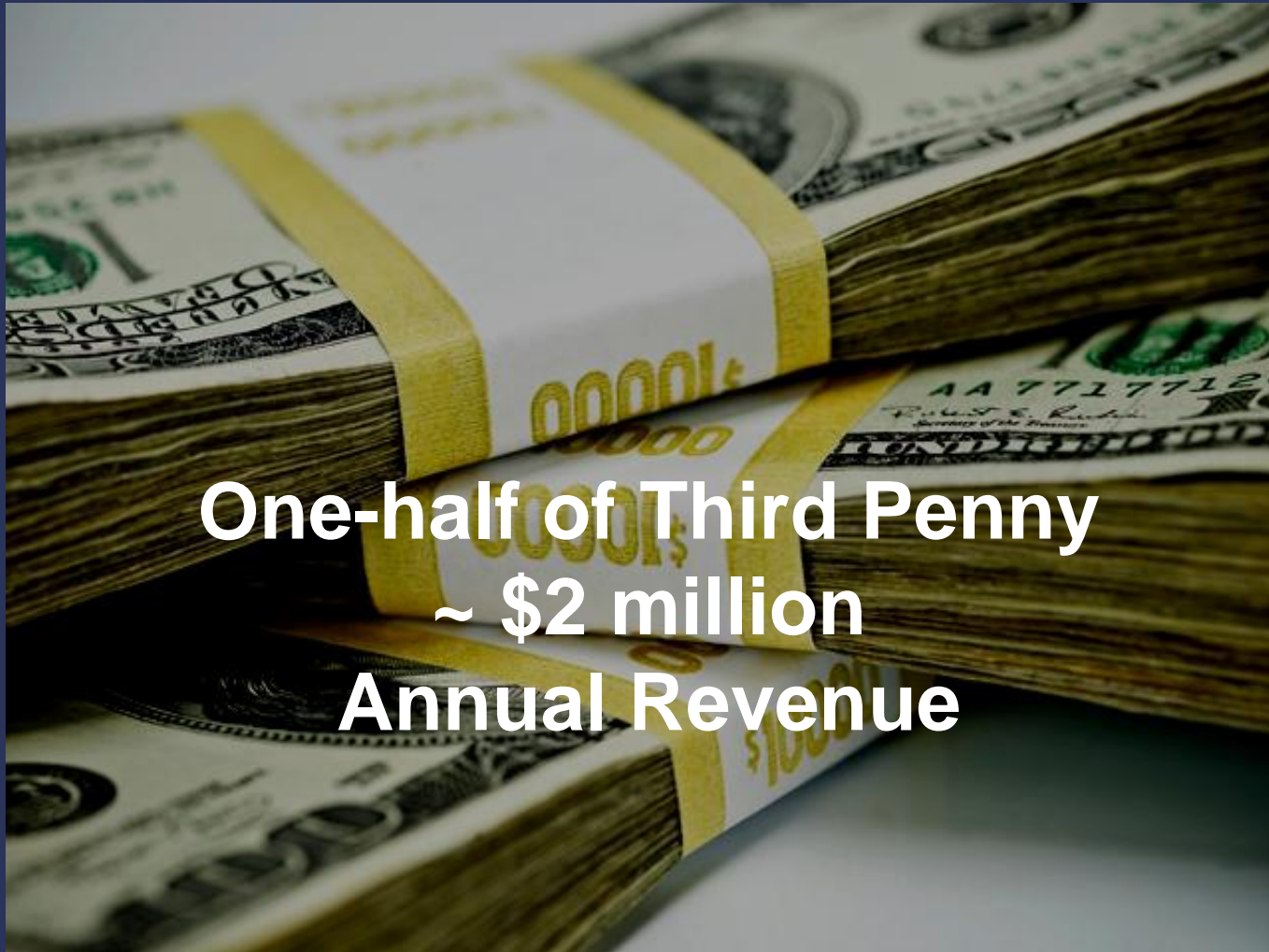


Sand Key 2012

Project Funding

- 62.8% Federal
- 37.2% Non-Federal

Coastal Management Program Funding from Tourist Development (Bed) Tax



**One-half of Third Penny
~ \$2 million
Annual Revenue**

Sand Key 2012 Project Team

- Pinellas County
 - Local Sponsor
- U.S. Army Corps of Engineers (USACE)
 - design, permitting, construction
- Construction Contractor for USACE
 - Norfolk Dredging

QUESTIONS

An aerial photograph of a coastal city, likely St. Petersburg, Florida. The image shows a large, crowded beach in the foreground, with many people and umbrellas. Behind the beach is a dense urban area with various buildings, including several tall, modern high-rise apartment or hotel buildings. A long pier extends into the turquoise water. In the background, a large bridge spans a wide body of water, and more city buildings are visible on the distant shore under a clear blue sky.

Andy Squires, Coastal Manager 727- 464 - 4633
e-mail: beaches@pinellascounty.org

Web Link to Updates:
www.pinellascounty.org/environment/coastalMngmt/sandkey.htm

