

# Minutes

Enterprise GIS Steering Committee		
2.4.2016	1:30pm – 2:10pm	Clerk's 4 <sup>th</sup> Floor Conference Room
Chair	Pam Dubov, Property Appraiser's Office (PAO)	
Vice-Chair	John Bennett, Assistant County Administrator	
Attendees	<p><u>Voting Committee Members</u>  Pam Dubov, Property Appraiser's Office PAO ABSENT  Marc Gillette, Supervisor of Elections (SOE) ABSENT  Jake Stowers, Assistant County Administrator  Paul Sacco, Assistant County Administrator  John Bennett, Assistant County Administrator  Jason Malpass, Pinellas County Sheriff's Office (PCSO) ABSENT</p> <p>Jill DeGood, Sheriff (for Jason Malpass)  Curt Nielsen, PAO (for Pam Dubov)</p> <p><u>Guests</u>  Ryan Auclair, BTS  Kevin Becotte, Utilities  Joe Borries, EM  Jeremy Capes, Utilities  Dan Cole, FHP  Mike Engelmann, Utilities  Dawn Estes, BTS  Tom Fredrick, BTS  Blake Lyon, DRS/Code Enforcement  Gregg Obarski, BTS  Penny Simone, Public Works/ETF  Toni Smith, BTS(Note taker)  Bryan Zumwalt, BTS</p>	
Agenda	<ol style="list-style-type: none"> <li>1. Call to Order</li> <li>2. Approval of Minutes</li> <li>3. Aerial/Oblique Photography Procurement</li> <li>4. Aerial/LIDAR Status</li> <li>5. 2017 Aerial Flight Opportunity</li> <li>6. 2016 User Conference Complimentary Pass Allocation</li> <li>7. EGIS Infrastructure Update</li> <li>8. MapGuide Retirement/Munsys Shutdown Status</li> <li>9. Release 1 – 2016 Projects</li> <li>10. Open Discussion</li> <li>11. Adjournment</li> </ol>	

## Agenda Items

Call to Order	
Presenter	John Bennett
	The meeting was called to order at 1:30pm.
Approval of minutes from the December 3rd, 2015 meeting	
Presenter	John Bennett
Discussion	It was asked by John if there were any changes to the December 3rd, 2015 meeting minutes, none were noted.
Conclusions	Paul Sacco motioned to approve, Jake Stowers seconded, all in favor. Minutes approved.

# Minutes

Aerial/Oblique Photography Procurement	
<b>Presenter</b>	Bryan Zumwalt
<b>Discussion</b>	Bryan went over the dates of the procurement of the Aerial/Oblique Photography. The final date of notice to proceed was December 21, 2015.

Aerial/LIDAR Status	
<b>Presenter</b>	Bryan Zumwalt
<b>Discussion</b>	<p>The Aerial/Oblique photography first flight occurred January 11, 2016. Raw images of these are available through Pictometry Online ten days after each flight. The anticipated final delivery is April 2016. Once they are delivered there will be an internal QC done by the Property Appraiser's office and the eGIS team.</p> <p>The LIDAR is on standby at the time because of atmospheric, tidal and weather conditions. It is anticipated that after the cold front this week, that conditions will be more favorable for the flights, which may occur at night depending on the low tide.</p>

2017 Aerial Flight Opportunity	
<b>Presenter</b>	Bryan Zumwalt
<b>Discussion</b>	<p>The Southwest Florida Water Management District (SWFWMD) will be flying aerials for their entire area in January 2017. There is an opportunity for Pinellas County to obtain these aerials with a 50:50 cost share with SWFWMD for a total of \$14,260. This would be a "filler" year of aerials since the county only purchases them every other year.</p> <p>It was agreed by the committee that this would benefit many of the county departments.</p> <p><b>RECOMMENDATION:</b></p> <p>For eGIS Steering Committee to approve funding for 2017 orthophotography acquisition and revenue agreement with Southwest Florida Water Management District (SWFWMD). A motion of the recommendation was said by Jake Stowers, Paul Sacco seconded, all in favor, recommendation approved.</p>

2016 ESRI User Conference Complimentary Pass Allocation	
<b>Presenter</b>	Bryan Zumwalt
<b>Discussion</b>	<p>The final allocation of the 20 complimentary ESRI User Conference passes was presented. The following departments are sending the following:</p> <p>Business Technology Services (BTS) – Bryan Zumwalt, Mike Dawson, Marcia Colby, Kelly Dickie</p> <p>Public Works – Kelli Levy, Troy Tinch, Lori James, Tyson Evatz, Gina Harvey</p> <p>Utilities – Jeremy Capes, Alan Bollenbacher, Michael Engelmann</p> <p>Public Safety Services – Rick Cody, Michael Erickson, Jackie Weinreich</p> <p>Property Appraiser – Curt Nielsen</p> <p>Development Review Services – David Howdeshell</p> <p>Real Estate Management – Keith Royster</p> <p>Departments may be sending others at their own expense.</p>

# Minutes

eGIS Infrastructure Update	
<b>Presenter</b>	Bryan Zumwalt
<b>Discussion</b>	<p>eGIS moved and virtualized the application servers from the Courthouse basement to the Public Safety Complex on December 20<sup>th</sup>, 2015. The impacts were minimal. The database servers (EGIS &amp; PGIS) were planned to move around March 2016, but the PGIS database was having issues within the past 2 weeks and it was decided on February 2<sup>nd</sup>, 2016 to move that server. The working group and the steering committee were notified of this on February 2<sup>nd</sup> and it was completed without any major issues, except for a firewall issue with Public Safety Services. The EGIS database will be done in March 2016. John Bennett inquired about proper notification of when that move will happen and Bryan responded that it will be coordinated with those in the county that use that database in their daily work.</p> <p>Bryan also brought up that there needs to be a more robust eGIS disaster recovery environment for GIS out at the ERB. It is currently undersized because when it was created in 2012, the only mission critical applications were Know Your Zone, Storm Surge and Damage Assessment. The eGIS application profile has greatly expanded and is in need of a redesign, especially when Cityworks comes on board. BTS is currently estimating the cost to size the DR environment appropriately. Curt Nielsen asked if this was for ArcGIS Server and Database mirroring and the answer was yes. John Bennett asked if this also included support of the municipalities in the county. Tom Fredrick responded that at this time there have been no requests from municipalities, except that St. Petersburg may have inquired about space at the Public Safety Complex. He also mentioned that when they do get the estimate of the cost to increase the eGIS footprint, it may need to be dispersed to the committee between the scheduled meetings. A special meeting can always be called if needed to discuss this issue further. There may need to be a working group meeting to discuss which applications are critical to be part of the eGIS disaster recovery environment.</p>

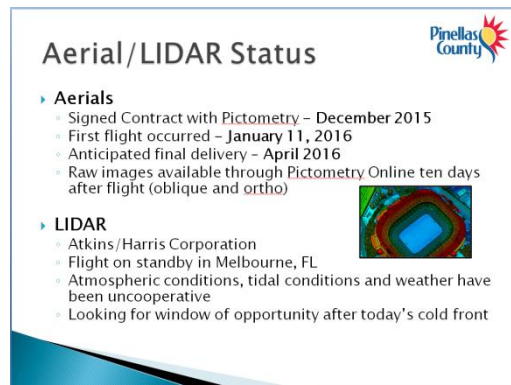
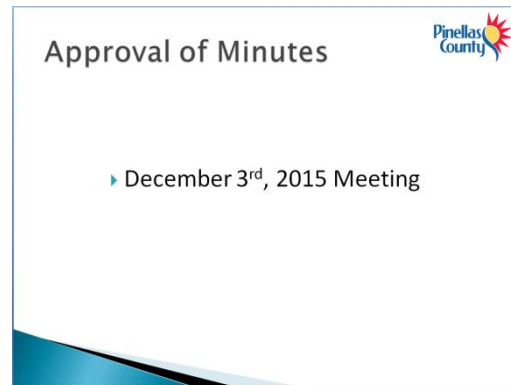
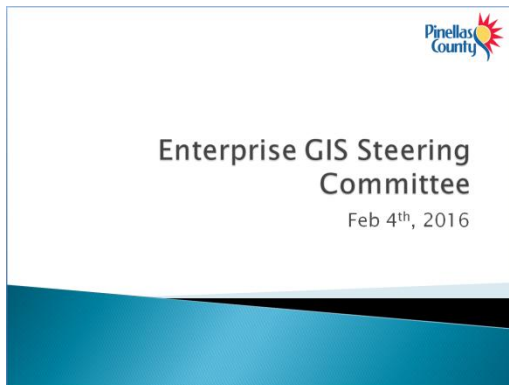
MapGuide Retirement/Munsys Shutdown Status	
<b>Presenter</b>	Bryan Zumwalt
<b>Discussion</b>	<p>The public Mapguide application has now been replaced with the new ESRI application and all seems to be going very well. There have been a few responses from the public on some issues and they are being handled as they come in. The DRS Front Counter, PCUGIS and internal WebGIS applications have been developed and are in the testing phase. eGIS still has some legacy data that needs to be migrated into Arc in order for the internal legacy MapGuide application to be retired. Those datasets include Public Works data such as infrastructure assets, maintenance jurisdictions, stormwater assets and ITS and Signal devices. eGIS is also working with Public Safety Services (911) on the adoption of the new ESRI geocoders. Bryan stated that the retirement of the legacy system is very close, and anticipates by the summer it should be retired. Bryan asked the committee if anything else may still be out there that needs to be looked into. Jill DeGood mentioned access to the web based geocoder, Quick App and WebEnforcer analysis tools. eGIS will look into the geocoder, had a meeting the past week on the specifics for the Quick App, and that since the analysis tools consume credits when used, there may need to be a testing process/analysis on what kind of scenarios these tools will be used for and how much credits are consumed. It may be that if the Sheriff consumes all the credits for the county, they may need to reimburse the credits. Jill offered to test the tools to see if they would be beneficial and then would talk with the higher level support in the Sheriff's office as to how to go forward.</p> <p>There will also be some training with some of these new applications in the near future. Jeremy Capes is working on some training starting in March 2016 on the PCUGIS applications with the Utility department.</p>

# Minutes

Release 1 – 2016 Projects	
<b>Presenter</b>	Bryan Zumwalt
<b>Discussion</b>	Bryan quickly went over the Release 1 – 2016 Initiatives (see slide) that the eGIS team is currently working on. On the Capital Improvement Project Mapping, Curt Nielsen asked if it transcends thru the municipalities to make one big county viewer. Bryan responded that it was OMB's decision to do a countywide push with that.

Open Discussion/Adjournment	
<b>Item #1</b>	Kevin Becotte asked about obtaining the Plant Facilities data into the eGIS database. Bryan responded with the fact that it wasn't decided yet if this scope is a GIS function or an EAM function. Kevin mentioned that it may be beneficial to at least get some spatial component in GIS before Cityworks comes in. This will require further discussion.
<b>Item #2</b>	Blake Lyon from DRS, requested cross training some of his department in the PCUGIS application, since they use that data in their pre-app meetings. It may help them understand the data better. Kevin Becotte agreed stating that the county's service areas are just not unincorporated areas.
<b>Item #3</b>	There is no tentative schedule yet with Cityworks, although it is anticipated by the end of the year, GIS will become involved.
<b>Adjournment</b>	The meeting was motioned to be adjourned at 2:10pm by Jake Stowers.

## Slide Presentation



# Minutes

## 2017 Aerial Opportunity



- Southwest Florida Water Management District Flying Aerials January 2017
  - 394 Square Miles (5000' x 5000' tiles)
  - Ortho Only** @ \$65/sq mile
  - 6" RGBi Product
  - \$28,520 for Pinellas County with 50:50 cost share with SWFWMD (\$14,260 total)

## 2017 Aerial Opportunity



- Recommendation for eGIS Steering Committee to approve funding for 2017 orthophotography acquisition and revenue agreement with Southwest Florida Water Management District

## ESRI User Conference Pass Allocation



BTS/eGIS (4)	Public Works (3)	Utilities (3)	Engineering (2)	SES/911 (3)	PAID (1)	DRS (1)	REM (1)
Mike Dawson	Keith Levy	Alan Bollenbacher	Brent Hall	Rick Cody	Curt Nielsen	David Howdeshell	Keith Koppier
Bryan Zumwalt	Troy Tisch	Jeremy Capes	Greg Duque	Michael Erickson			
Kelly Dickie	Lori James	?		Jackie Wiersch			
Marcia Colby	Tyson Ewatz						
	Gina Harvey						



## eGIS Infrastructure



- Moved and virtualized application servers from Courthouse basement to Public Safety Complex on December 20<sup>th</sup>, 2015
- Email notification sent December 17<sup>th</sup> to Working Group
- Impacts minimal to user community (hopefully you didn't notice)
- Planned database server move around March 2016 (EGIS/PGIS databases)
- Will continue to coordinate any infrastructure moves with eGIS Working Group



## eGIS Infrastructure



- Requirement for more robust eGIS disaster recovery environment
- Current capacity at ERB Building off Drew Street is undersized
- Current environment designed to only run three applications deemed mission critical in 2012 (Know Your Zone, Storm Surge, Damage Assessment)
- Since 2012, eGIS application profile greatly expanded
- eGIS disaster recovery/failover not designed to keep eGIS applications + CityWorks GIS Services going in the event of a disaster
- BTS infrastructure group developing estimates to size DR environment appropriately



## MapGuide Retirement



- Where are we?
  - Public Facing WebGI MapGuide Viewer – RETIRED**
  - Internal Facing WebGI MapGuide Viewers – IN DROP**
    - ESRI Countywide **WebGIS Replacement** Application Developed
    - ESRI **DRS Front Counter Replacement** Application Developed
    - ESRI **PCUGIS Replacement** Application Developed
    - Other ESRI **"Focused" Applications** Developed
  - Outstanding Data Migration/Integration Tasks – IN PROGRESS**
    - Public Works – Infrastructure Assets, Maintenance Jurisdiction, Stormwater Assets, ITS/Signals
    - 911/SES – Adoption of new ESRI Geocoders



## Release 1 – 2016 Initiatives



### R1 Projects – By Department

- Public Works**
  - Tree Inventory Collector Application
  - Stormwater Collector Application
  - Field EOC Operations Viewer
  - Street Light District Tax Roll Automation
- Development Review Services**
  - BDRS Front Counter Training
  - BDRS Site Plan Review Public Viewer
- Human Services**
  - Data Migration & Public Data Viewer
- Planning**
  - Focused Planning GIS Viewer
  - Sea Level Rise Vulnerability Study
- OMB**
  - Capital Improvement Project Mapping
  - Penny for Pinellas/CIP StoryMap
- Sheriff**
  - Outstanding Warrants Viewer
  - Enforcer Training
  - Intelligence Led Policing
- Utilities**
  - PCUGIS Training
  - SCADA/GIS Integration
  - PCU GIS Offline Collector Application
  - Utility Data Cleanup
- Emergency Management**
  - Damage Assessment Post Event Products



## Open Discussion