

# Minutes

Enterprise GIS Steering Committee		
12.4.2014	1:45pm –2:35pm	Communications Studio B
Chair	Pam Dubov, Property Appraiser's Office (PAO)	
Note taker	Toni Smith, BTS	
Attendees	<p><u>Voting Committee Members</u>  Pam Dubov, PAO - Chair  Bruce Moeller, Interim Chief of Staff – Vice Chair  Jill DeGood, Sheriff (for Jason Malpass)  David Scott, Department of Environment and Infrastructure (DEI)  Jake Stowers, Planning/DRS  Marc Gillette, Supervisor of Elections</p> <p><u>Guests</u>  Ryan Auclair, BTS  Deborah Berry, Justice &amp; Consumer Services  Don Crowell, County Attorney  Jim Fletcher, BTS/EAM  Tom Fredrick, BTS  Christy Kretschmann, BTS  Curt Nielsen, PAO  Marty Rose, BTS  Alan Shellhorn, Planning  Penny Simone, DEI  Toni Smith, BTS  Larry Solien, DEI  Bryan Zumwalt, BTS</p>	
Agenda	<ol style="list-style-type: none"> <li>1. Call to Order</li> <li>2. Approval of Minutes</li> <li>3. EGIS Steering Committee Future – Potential EGIS/EAM Policy Board</li> <li>4. UC Conference Passes Nominations</li> <li>5. 2014 Achievements</li> <li>6. Release 1-2015 Initiatives</li> <li>7. ESRI Enterprise Advantage Plan (Present/Future)</li> <li>8. Open Discussion</li> <li>9. Adjournment</li> </ol>	

## Agenda Items

Call to Order	
<b>Presenter</b>	Bryan Zumwalt
	The meeting was called to order at 1:45pm.

Approval of minutes from the November 6 <sup>th</sup> , 2014 meeting	
<b>Presenter</b>	Pam Dubov
<b>Discussion</b>	It was asked if there were any changes to the November 6 <sup>th</sup> , 2014 meeting minutes. No comments were made.
<b>Conclusion</b>	David Scott made a motion to approve the minutes. Jake Stowers seconded. All in favor. Minutes approved.

# Minutes

EGIS Steering Committee Future – Potential EGIS/EAM Policy Board	
<b>Presenter</b>	Pam Dubov
<b>Discussion</b>	<p>Pam wanted to let the EGIS Steering Committee members know of the proposal that she had brought to the BTS Board back in October about disbanding this committee and creating a new EGIS/EAM Policy Board, which would function more like the CJIS Board. It has become evident that EGIS is more “operational” now and would benefit more from a Policy Board that would help in prioritizing and finding resources and dealing with revenue issues at a higher level. This subject will be discussed more in the January BTS Board meeting, but Pam asked if there were any objections to this proposal. Those on the committee agreed it would be a good idea, along with Jim Fletcher, EAM Project Sponsor and Bryan Zumwalt, GIS Manager, whom of which have been working closely together on certain issues. Don Crowell from the County Attorney’s office advised to use caution with this as there could be some detail issues.</p>

UC Conference Passes Nominations	
<b>Presenter</b>	Bryan Zumwalt
<b>Discussion</b>	<p>The total nominations are still at 15: DEI – 6, SES/RAT – 2, BTS – 4, Planning – 2, Health and Community Services – 1.</p> <p>Bryan mentioned that he would contact ESRI about trying to get the additional 5 passes to accommodate, if that failed, he would be contacting those stakeholders individually. It was also mentioned about the ESRI Developer Conference and that if anyone was interested in attending that conference, EEAP credits could be used for that. As of now, only the PAO and SES/RAT departments have shown interest in this conference.</p>

2014 Achievements	
<b>Presenter</b>	Bryan Zumwalt
<b>Discussion</b>	<p>Bryan went over a couple of slides that showed the 2014 Achievements of EGIS which included four completed workshops, two completed data migration efforts and two which were in the process, along with five completed applications and six which were in the process. It was also shown the production support efforts in which maps and data analysis were provided to different county departments along with the daily maintenance editing of certain data such as annexations, municipal boundaries, zoning, future land use, MPO data, Emergency Management data, and road centerline legacy editing. Bryan mentioned that the 2014 Aerials were now available. A couple of slides were shown with screen shots of some of the completed and in process applications.</p>

Release 1 -2015 Initiatives	
<b>Presenter</b>	Bryan Zumwalt
<b>Discussion</b>	<p>Bryan discussed the Release 1-2015 Projects which are meant to focus directly on retiring Mapguide with creating focused applications such as Development and Review Services (DRS) front counter and DEI Asset Viewer. Other initiatives were: Supervisor of Elections data migration, Damage Assessment Application (Phase II), DEI Transportation and Stormwater data migration, eGIS Infrastructure move to Public Safety Complex, Open Data Portal, and any overflow projects from Release 2 -2014. It was also mentioned again about the unknown scope of involvement of EGIS in the implementation of CityWorks (Enterprise Asset Management) and Accela (Planning/Development Review Services). Pam asked if there was a timeframe on when the “unknown” would be known, since budgeting is going to start up and quantifying resources for these projects should be included in those budgets. It was mentioned that these projects may have already budgeted for resources in the contract negotiations. It was also mentioned that there needs to be a definition of when a project is considered an “EGIS Project” or a “Departmental Project.” This needs to somehow be communicated to the county departments to make them aware of including in their budgets any anticipated “GIS” projects. Bryan mentioned that he doesn't see much impact with these two projects in Release 1-2015, but maybe in Release 2-2015.</p>


# Minutes

ESRI Enterprise Advantage Plan (Present/Future)	
<b>Presenter</b>	Bryan Zumwalt
<b>Discussion</b>	<p>Bryan mentioned that EGIS is in year 3 of the 4 year license agreement with ESRI and it is time to start looking at the options for when April of 2016 rolls around. The options looking into would be the cost of a new ELA or continuing with straight maintenance. Bryan said he was going to be working with ESRI to evaluate the options available and would bring them to the committee. Pam mentioned that these options need to be presented to the committee either in January or February (before the budget workshops begin). Marty Rose asked the question on why the existing ELA doesn't cover the cities. Pam began to explain about the original ELA concerning the cities, which was what was discussed at last month's meeting by ESRI. The reason being that ESRI can only bill one entity and that entity would have to assume all liability. It was the county's position at the time that they didn't want the liability. It was also decided that the county would not be "service provider" for the cities, where they would not be able to use the county's infrastructure for their own business use. Pam mentioned that the right decision was made concerning the cities at the time. Don Crowell mentioned that although there are legal mechanisms that could make this work, practical matters fall into play.</p> <p>It was requested by the Curt Nielsen from the Property Appraiser's office for use of some of the EEAP credits to assess some of their GIS activities. A meeting with ESRI is set up for Friday (12/5) to discuss these activities. Pam requested that the committee vote on the usage of these credits by her department. Bruce Moeller moved to approve, stating that the county uses the Property Appraisers data as their base so it is important to all county departments, Jake Stowers seconded and it was approved.</p>

New Business / Open Discussion	
<b>Item #1 – January Meeting</b>	Since the first Thursday of January 2015 falls on a holiday, the next Thursday would be the 8 <sup>th</sup> . It was asked of the committee if a meeting was wanted to be held on that day or cancel it and wait for the February meeting. It was decided to have a meeting on January 8 <sup>th</sup> , 2015. A meeting invite would be sent out.
<b>Item #2 –</b>	Penny Simone (DEI), wanted to thank Bryan and the EGIS Team for their help and expertise in working with those in DEI concerning data migration and application development.

# Minutes

## Slide Presentation




### eGIS Steering Committee Update

December 4th, 2014



### Approval of Minutes

- ▶ November 6th, 2014 Meeting



### eGIS Steering Committee Future

- ▶ eGIS/EAM Policy Board Proposal



### ESRI – UC Conference Passes

- ▶ County has 10 complimentary passes annually
- ▶ Need to decide allocation of complimentary 2015 ESRI Conference passes for County departments

2014 UC Passes			
Department	Nominal	Allocated	Used
Department of Environment and Infrastructure (DEI)	6	3	5
Public Safety Services (PSS)	2	2	2
Property Appraiser (PAO)	2	0	0
Pinellas County Sheriff (PCSO)	2	2	0
Business Technology Services (BTS)	6	3	3
	18	10	10

2014 ALLOCATION

2015 UC Passes			
Department	Nominal	Allocated	Used
Department of Environment and Infrastructure (DEI)	6		
Safety and Emergency Services (SES/NAT)	2		
Planning	2		
Health & Community Services (HCS)	1		
Business Technology Services (BTS)	4		
	15		

2015 REQUESTS



### 2014 Achievements

- ▶ **ESRI Workshops Completed:**
  - Security Assessment Workshop
  - DEI Discovery Workshop
  - DEI Data Migration Workshop
  - Road/Addresses Workshop
- ▶ **Data Migrations Completed:**
  - Pinellas County Sheriff Non-Crime Data
  - DEI Utility Data – Water and Sewer
- ▶ **Data Migrations In Process:**
  - County Crime Data
  - Addresses/Road Centerline Data
- ▶ **Applications Completed:**
  - Damage Assessment
  - PCU Maps
  - Historic Sites
  - REM County Owned Property
  - Storm Surge (with EMA)
- ▶ **Applications In Testing:**
  - Parks Finder
  - PCSO PCADS
  - CrimeFighter
  - QuickApp
  - Licensing Board



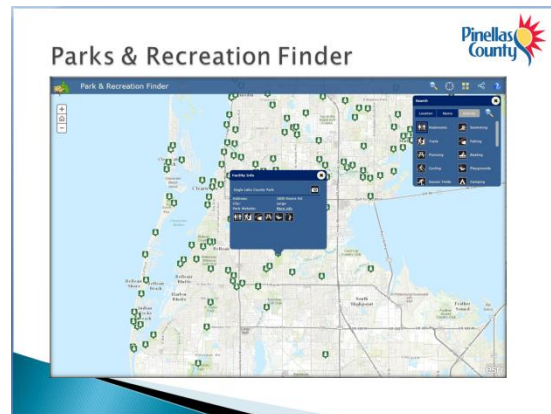
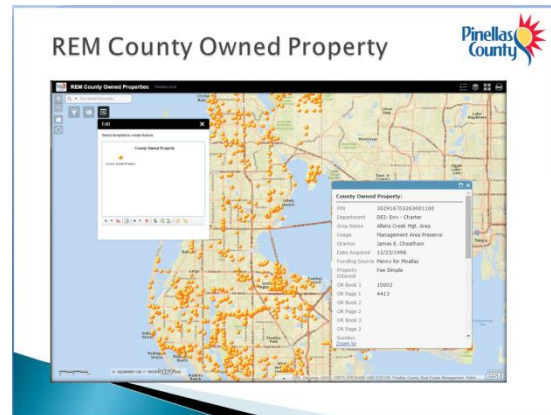
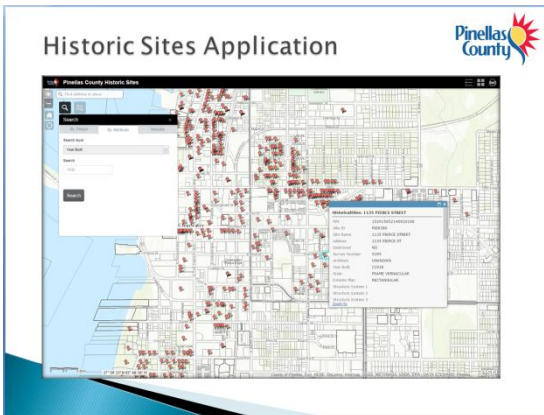
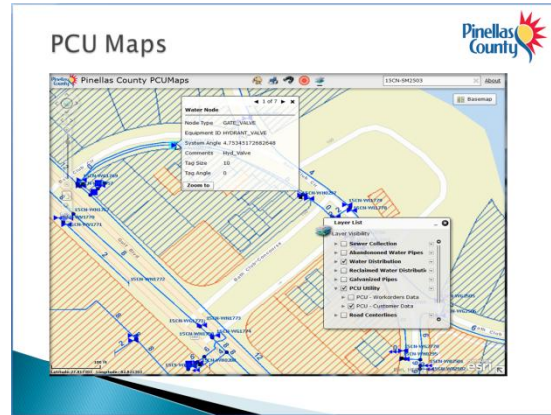
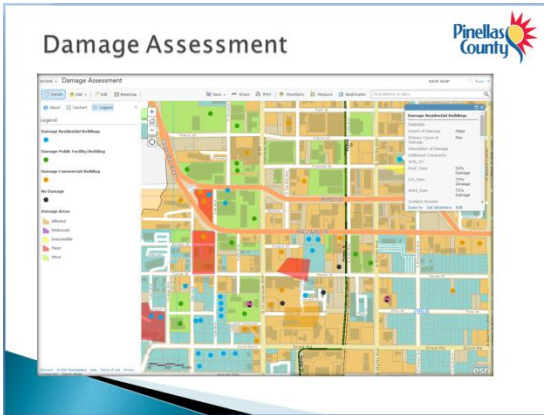
### 2014 Non-Release Achievements (Production Support)

- ▶ **Maps & Data Analysis for:**
  - Air Quality
  - Business Technology Services
  - Communications
  - County Attorney
  - Economic Development
  - Emergency Management
  - Fleet
  - MPO
  - Planning
  - Property Appraiser

- ▶ **Other Projects in Process:**
  - ArcGIS Online Overhaul
  - Focused Applications
  - Database Restructure
  - Half Section Planning Maps
  - Survey File Number Viewer
  - Pictometry/Aerials

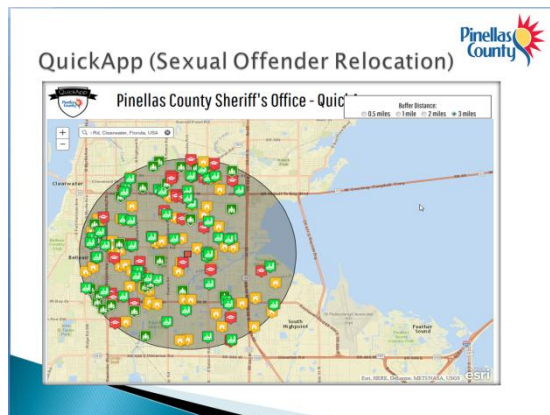
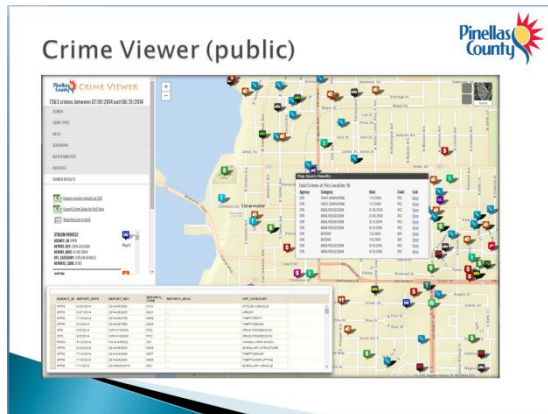
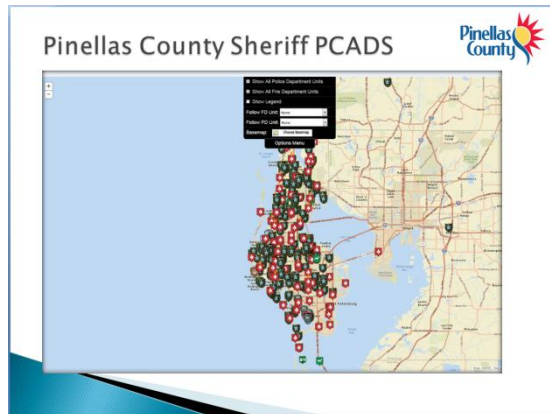
- ▶ **Legacy Editing of Road Centerlines**
  - 75 requests = 235 road centerline changes
- ▶ **Editing in EGIS for:**
  - Annexations/Municipal Boundaries
    - 488 Processed Annexations
  - Zoning/Future Land Use for Planning
  - All data sets of Emergency Management such as:
    - Shelters, Accommodations, Evacuation
  - All data sets of MPO, such as:
    - Trails, Sidewalks, MPO Construction
  - Data for Pinellas County Sheriff as needed.

# Minutes



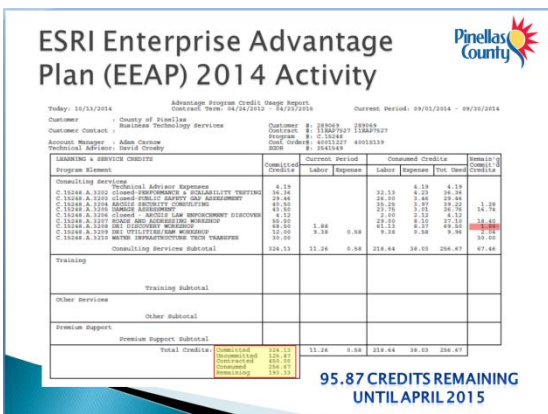


# Minutes




- ## Release 1 – 2015 Initiatives

- ▶ **Project Candidates – Primary eGIS Participation**
  - Focused Apps to **Retire** Mapguide Countywide
    - BDRS Front Counter
    - Roads/Addresses Data Viewer
    - DEI Asset Viewer
    - REM County Owned Lands (Phase II)
  - Supervisor of Elections (MapInfo to **eGIS**)
    - Strategy and Migration Plan
  - Damage Assessment Phase II
  - DEI **Stormwater**/Transportation Data Migration
  - **eGIS** Infrastructure move to Public Safety Complex
  - Open Data Portal
  - 2014 Release 2 Project Overflow
- ▶ **Project Candidates – Unknown eGIS Participation**
  - **CityWorks** (Enterprise Asset Management Implementation)
  - **Accela** (Planning/Development Review Services)




# Minutes



## EEAP Future Activity

- ▶ Property Appraiser Requesting Approximately 60 EEAP Credits for GIS Activities:
  - Overall assessment of PAO use of GIS
  - On-site training for cartographers and appraisers
  - Registration for two attendees to the developer conference in Palm Springs, March 2015
  - Performance and infrastructure analysis (including database)
  - GAP analysis between what PAO uses and ESRI's available software, including COTS
  - On-premise GIS Portal setup and use
  - GAP Analysis and Integration of PAO with eGIS
  - Parcel Fabric GAP analysis and performance review



## Open Discussion

Next Meeting – January 8<sup>th</sup>?