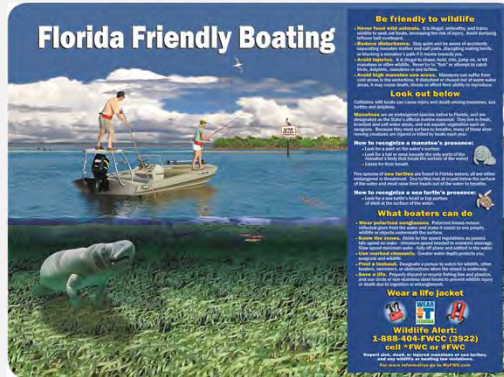


THREATENED & ENDANGERED WILDLIFE

Florida Manatee (*Trichechus manatus latirostris*)



Manatee Educational Sign

This sign can be posted where manatees are present to encourage awareness and responsible boating practices.

The manatee is listed as Endangered by the US Fish and Wildlife Service (FWS) due to its severe decline in population. This plant eating marine mammal is typically found in freshwater rivers, estuaries, and coastal waters of the Gulf of Mexico and the Atlantic Ocean. Its range is generally limited to the tropics and sub-tropics due to an extremely low metabolic rate and lack of a thick layer of insulating body fat. It requires warm water effluent, such as springs, in the winter months and a source of cold water in the summer months.



Adult Manatee with Calf

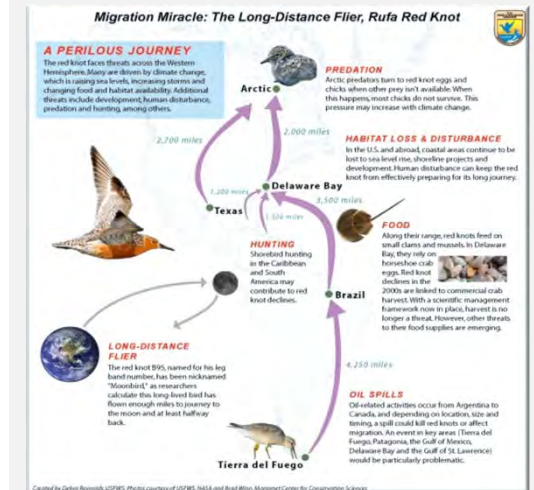
Photo credit: FWS



Manatee Caution Sign

This sign is temporarily posted during construction activity.

Red Knot (*Calidris canutus rufa*)



The rufa red knot is a migratory shorebird that uses spring and fall stopover areas along the eastern US coastline while in migration. This species was recently listed as Threatened by the FWS due to loss of foraging and breeding habitat. Pinellas County will coordinate with the FWS during project development to prevent potential impacts to the rufa red knot while in its migration through Pinellas County.

Sea Turtles



Green Sea Turtle

Six of the seven species of sea turtles are listed as Threatened or Endangered by the FWS. This is due to many factors, including loss of nesting and feeding habitat, accidental capture and entanglement in fishing gear, poaching, and ocean pollution. In order to prevent impacts to nearby nesting areas, sea turtle-friendly lighting will be incorporated into the bridge design.

Wading Birds



Little Blue Heron



Wood Stork



Snowy Egret

The project area contains potential habitat for the wood stork (*Mycteria americana*), which is listed as Endangered by the FWS; as well as for the limpkin (*Aramus guarauna*), little blue heron (*Egretta caerulea*), snowy egret (*Egretta thula*), tricolored heron (*Egretta tricolor*), and white ibis (*Eudocimus albus*), all of which are listed as Species of Special Concern by the FWC. These wading birds nest and forage among both fresh and saltwater habitats such as freshwater marshes, coastal beaches, mangrove swamps, cypress swamps, hardwood swamps, wet prairies and bay swamps. Wetland mitigation will provide compensation for any lost habitat.