



Lealman Central Area Improvements

Preliminary Engineering Study
Public Meeting No. 1
April 4, 2012

Presentation Outline

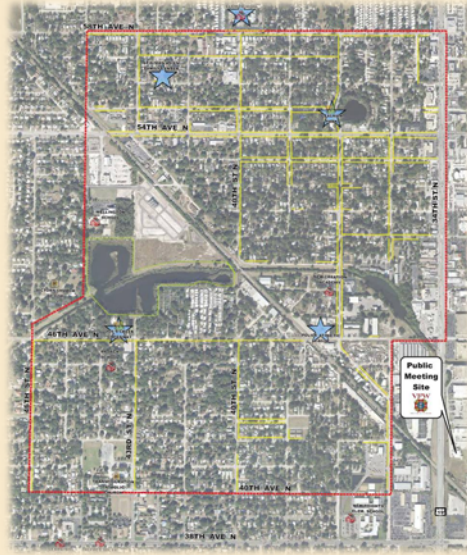
- Welcome
- History Within the Study Area
- Study Overview
- Public Involvement / Public Awareness
- Study Scope & Project Schedule

2

Welcome

Project Overview

- Lealman Central Area
- Pinellas County
- Community Development Block Grant (CDBG)
- Limited Resources
- Maximize Opportunities
- Partner w/ Community



History in the Area

Community Visioning

- Began almost 11 years ago
 - Residents, Property Owners, Business Leaders working with the County
- Revitalization Plan for the Lealman Community
 - Adopted by BCC on July 16, 2001



Progress Update

- Community Identity
 - 9 Welcome Signs, I-275 Signage, FDOT Map Additions
- Community Design & Appearance
 - Over 825 tons of trash and debris over a 4-year period have been removed through volunteer efforts
 - Creation of Municipal Services Benefit Unit (MBSU) for Unified Trash Collection Service
 - Formation of Community Action Team (CAT)
 - Neighborhood Stabilization Program to address foreclosure issues
- Sense of Community
 - Events Sponsored by Family Center, Lealman Fire, PAL



5

Progress Update

- Community Recreation and Greenspace
 - Development Joe's Creek Greenway Park
 - Lealman Park Rededication and Improvements
 - Police Athletic League Connection Center
- Community Services
 - Lealman and Asian Neighborhood Family Center
- Community Infrastructure
 - Preliminary Engineering Study (ongoing)
 - Safe Routes To Schools Sidewalk Improvements
- Community Safety
 - 10 Street Lighting Districts, 44 Fire Hydrants



Current Study

- Community Development Block Grant (CDBG) Provides Funding For:
 - This Study
 - Priority Improvements
 - Annual Budget Allocation w/ Limits



Project Development Process



- Goals of a "Study"
- Identify & Evaluate Project Alternatives
- With Input from the Public & Stakeholders
- Identify an Improvement Plan to be Advanced
- Timing is Dependent on Available Funding

Public Involvement

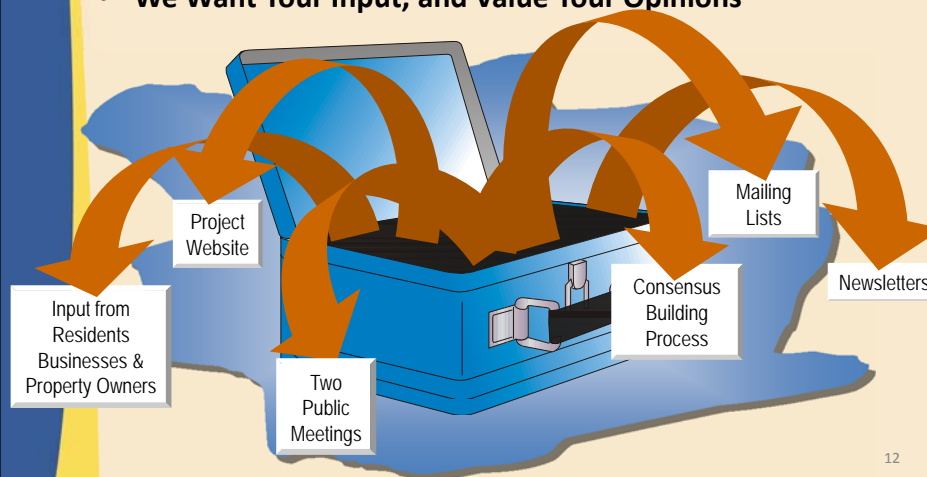
- Community Engagement
 - Residents, Businesses, Property Owners
- Two Public Meetings
 - April and June, 2012
- Engage the Community
 - Comment Forms
 - Project Website
 - E-mail Correspondence



11

Public Outreach Techniques

- **Consensus Building is Part of Public Involvement Process**
- **We Want Your Input, and Value Your Opinions**



12

Public Involvement

- Involve the Community
- Your Input is Valuable!!
- Comment Period Open Until April 16th
- Present Meeting Summary to County Staff
- Incorporate into the Study Process

13

Joe's Creek

- Greenway is a "Crown Jewel" of the Community
- Stormwater sends trash, debris, sediment, and pollutants into Joe's Creek and beyond



Public Awareness

Chain of Events



Trash Litter
Pet Litter
Fertilizers & Chemicals
Oil and Car Fluids



15

How Can I Get Involved?

Community Groups

- Lealman Community Association
- Lealman and Asian Family Center
- Police Athletic League
- Lealman Fire CERT Team



How Can I Get Involved?

Joe's Creek Cleanup in East Lealman

- Saturday, April 14th
- Meet at 78th Street N at 8:00 AM
 - Across from Wagon Wheel Flea Market
- Lunch Social & Raffle 11:30 to 12:30
- www.pinellascounty.org/volserv/Events.htm



Study Overview

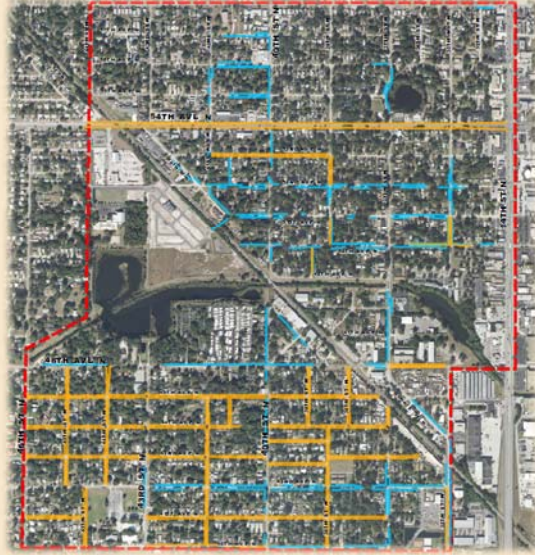
Preliminary Engineering Study

- Identify Issues Within the Study Area
 - Drainage and Flooding
 - Water Quality Issues
 - Safety Concerns
 - Ditch Depth / Maintenance
 - Fire Hydrant Spacing
 - Garbage Collection Challenges
 - Recycling Opportunities
 - Others w/ Input from Public
- Develop and Evaluate Potential Solutions
 - Engineering & Environmental Analysis
 - Drainage & Flooding
 - Safety Characteristics
 - Water Quality Issues
 - Public Involvement / Community Awareness
- Study Products
 - Preliminary Engineering Report
 - Identify Improvement Priorities / Budget Constraints
 - Continued Community Involvement & Participation



Existing Stormwater Systems

- Ditches in Blue
- Curb/Gutter with Underground Drainage Pipes in Orange
- Also Shown on Displays



Issues with Existing Ditches

- Erosion Affects Streets and Yards
- Bare Ditch Bottoms Send Sediment Downstream
- Challenging to Maintain (Residents Can't Mow)



Issues with Existing Ditches

- Trash and Debris Also Sent Downstream
- Ditches Take Up Space in Right-of-Way



21

Drainage Complaints

- On Display Here Tonight
- We Welcome Your Input



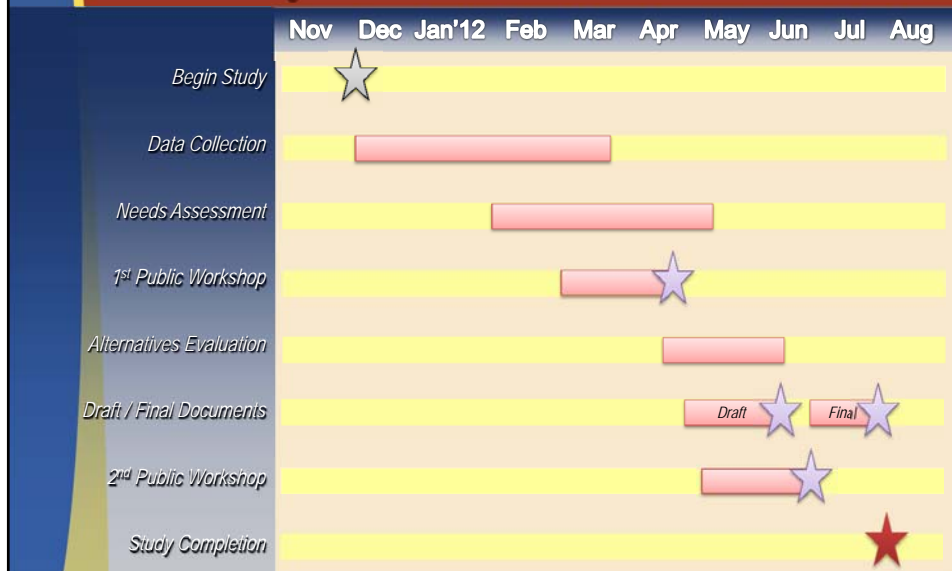
Water Quality Improvements

- Detention Ponds
- Pervious Pavement
- Stormwater Filtration Systems
- Grass Swales
- Vegetated Swales



23

Study Schedule Overview



Study Schedule Milestones

9 Months Overall

- Begin Study: Nov. 30, 2011
- Public Meeting No. 1: April 4, 2012
- Draft Study Report
 - Anticipated Mid May 2012
- Public Meeting No. 2: Early June 2012
- Final Study Report
 - Anticipated Mid July 2012

25

Contact Information

Armanda Lampley
Pinellas County
Community Development



727.464.8252

Contact Information

Scott Garth, PE



3816 W. Linebaugh Avenue, Suite 400
Tampa, FL 33618

813.265.9800

lealmanstudy@drmp.com

Lealman Central Area Improvements



Preliminary Engineering Study
Public Meeting No. 1
April 4, 2012