

Lealman Central Area Improvements Preliminary Engineering Study

April 2012
Newsletter #1

Study Overview

Almost 11 years ago, residents, property owners and businesses of Central Lealman came together to identify their “Vision” for Central Lealman. This “Vision” and recommended actions were documented in “A Revitalization Plan for the Lealman Community” that was approved by the Board of County Commissioners on July 16, 2001.

Much has been accomplished since this time through the County’s partnership with the Community including:

- Completion of 10 Street Lighting Districts in Central Lealman
- Addressing Annexation Issues by Amending Planning Area Boundaries to Reflect the Lealman Fire District Boundaries and Completion of an Incorporation Feasibility Study
- Installation of “Welcome to Lealman” Signs in 9 Locations
- Lealman Park Rededication and Improvements
- Lealman Area Placed on the Official Florida Department of Transportation Map and Signage on I-275
- Formation of County Action Team (CAT) to address problem properties
- Community Cleanups (Removed nearly 825 Tons of Trash and Debris over a 4-year period)
- Implementation of the Municipal Services Benefit Unit (MSBU) for a Unified Trash Collection Service (The only unified trash collection service in Unincorporated Pinellas County)
- Construction of the Lealman and Asian Family Center
- On-going Development of Joe’s Creek Greenway Park
- Installation of 44 Fire Hydrants in Lealman, including 13 in Central Lealman
- Construction of “PAL Connection Center” at Lealman Park
- Implementation of Senior Grant Program that assisted with home repairs
- Implementation of Neighborhood Stabilization Program (NSP) to address foreclosure

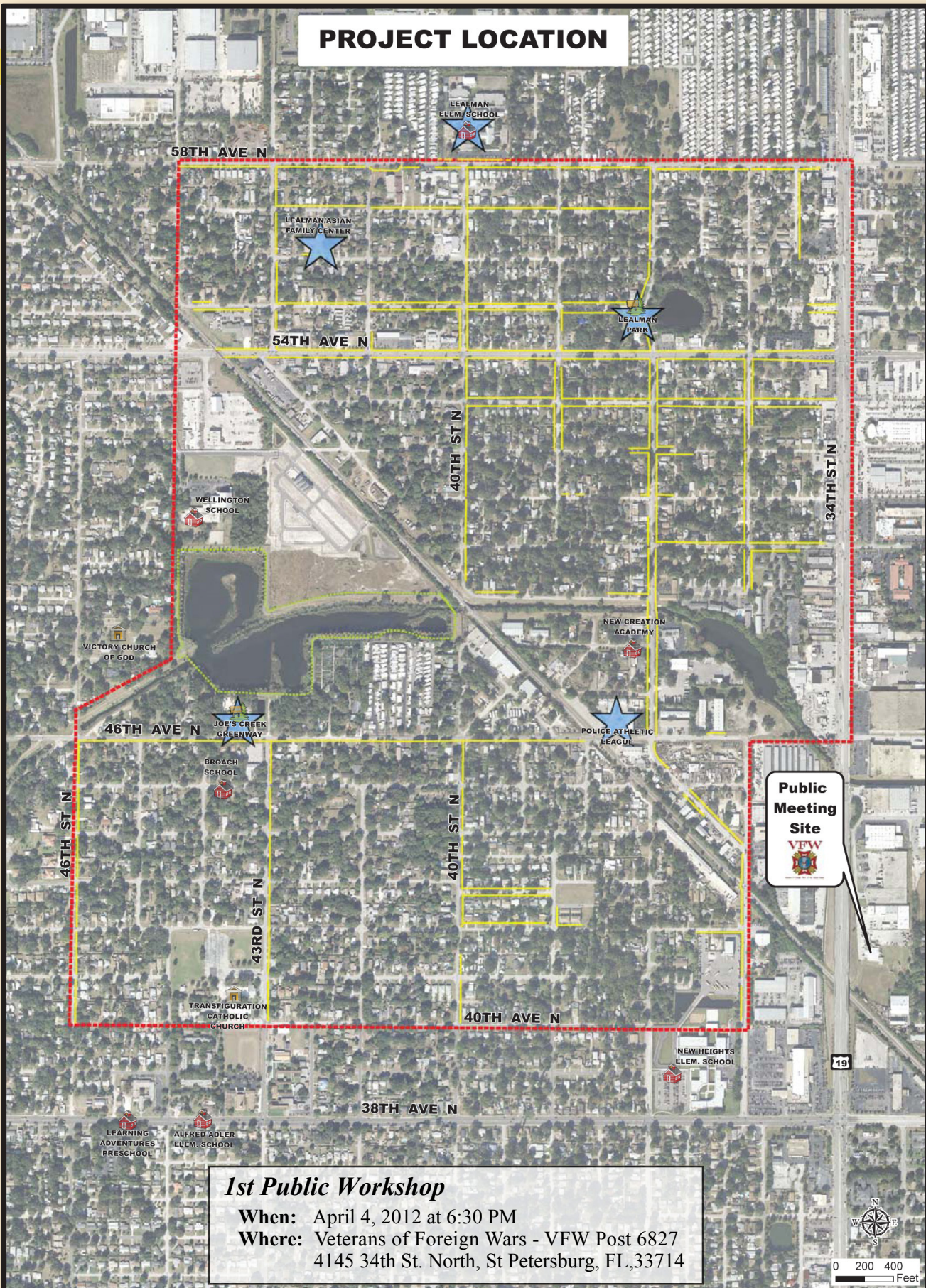
Continuing the partnership with the community, the County is conducting a study that is the first phase of planning for proposed public improvements to be constructed over an extended period of time that will address community safety, flooding and water quality in Joe’s Creek. The Creek serves as a stormwater pond as well as a passive recreation park with walking paths, educational kiosks and wildlife habitats for residents to enjoy. As identified in the Revitalization Plan, one of the study objectives is to address unknown flooding and stormwater concerns comprehensively and in a manner that will alleviate flooding and positively contribute to the appearance of the community.

Raising public awareness on how to keep the creek healthy through community efforts is also an important component of the study. Did you know that simply washing a car in the street can impact the water quality of Joe’s Creek? What else affects the water quality in the creek? *Any of these can have an impact:*

- Litter in yards or trash in gutters, ditches and streets
- Leaky oil from cars and trucks
- Not picking up after pets
- Tossing water bottles



PROJECT LOCATION



1st Public Workshop

When: April 4, 2012 at 6:30 PM

Where: Veterans of Foreign Wars - VFW Post 6827
4145 34th St. North, St Petersburg, FL, 33714



Lealman Central Area Improvements Preliminary Engineering Study

Legend

- Study Boundary
- Asphalt Trail
- Schools
- Parks
- Existing Sidewalks
- Proposed Bridge
- Churches
- Community Facilities