

Pinellas County Capital Improvement Program

**Proposed Six-Year Plan Development
FY08 through FY13**

**Board of County Commissioners
Budget Information Session
May 17, 2007**

FY08 to 13 CIP Development

- Overall CIP Goal – To Provide Physical Facilities that Are:
 - ❑ Responsive to the needs and demands of the public and County Government
 - ❑ Supportive of the long and short range economic, social, and environmental development policies of the County
 - ❑ Necessary to achieve levels of service identified in the County's Adopted Comprehensive Plan

FY08 to 13 CIP Development

- First year of adopted CIP must be balanced and funds legally appropriated
- Out years reflect a financial and production plan for future capital project needs
- CIP provides financial and management planning data for future operations and maintenance impacts

FY08 to 13 CIP Development

- Multi-year Penny for Pinellas Plan project commitments remain unchanged
- All projects/programs reviewed and updated as to schedules and costs
 - Details in Summary of Changes report
 - Concern noted that rising costs for projects continue to outpace revenue growth

FY08 to 13 CIP Development

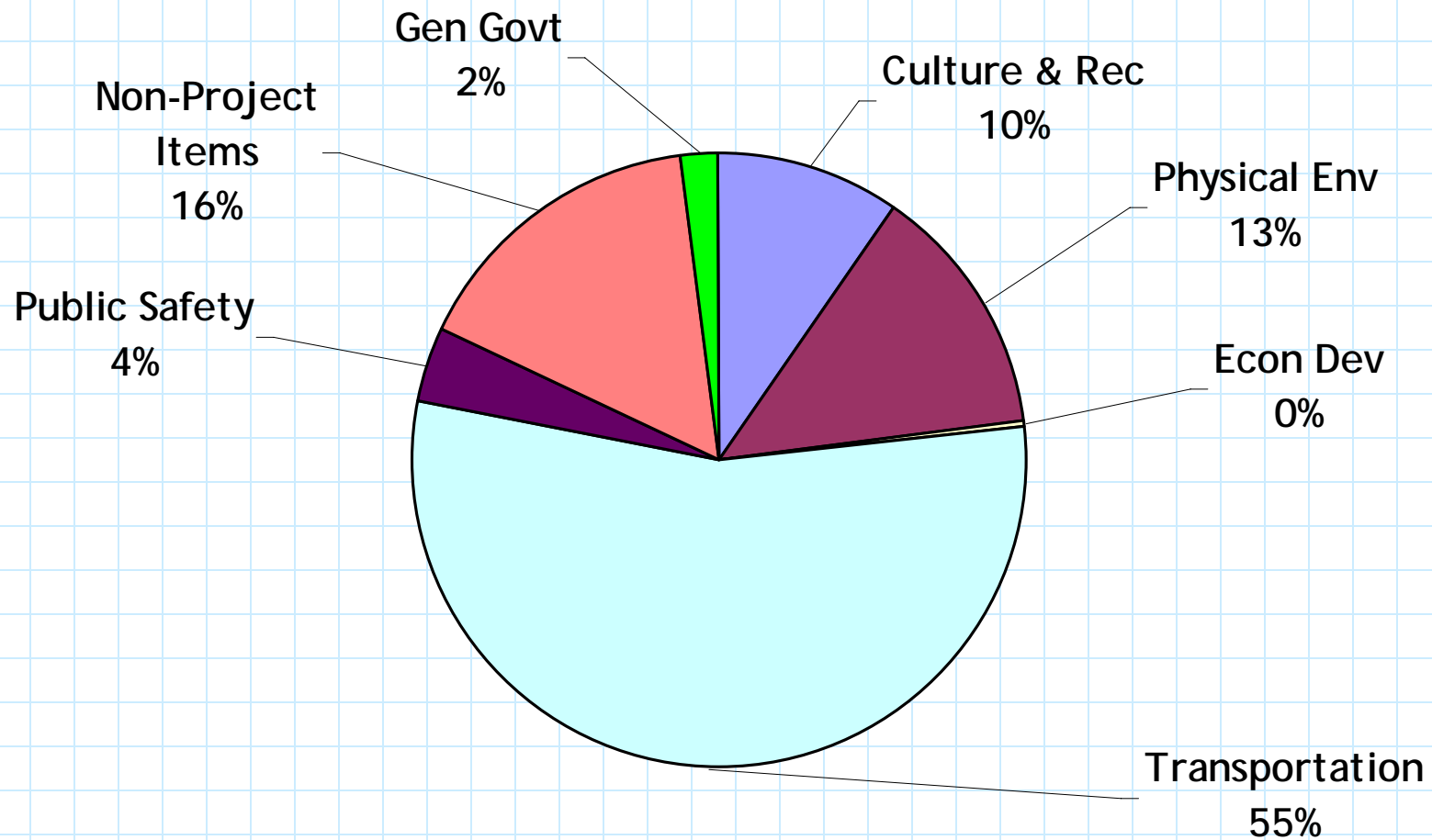
- Inflationary pressures impacting cost of current projects

(examples)

- ❑ Keystone Road (\$59.3M to \$86.3M)
- ❑ Haines Road (\$6.6M to \$13.4M)
- ❑ 46th Ave. Drainage (\$2.2M to \$5.4M)

FY08 CIP – Governmental

Total: \$244,826,290



FY08 CIP- Governmental

■ Highlights

- ❑ Belleair Causeway Bridge (Under Construction)
- ❑ Keystone-US19 to East Lake (Final Design)
- ❑ Starkey-84th Lane to Bryan Dairy (Final Design)
- ❑ Haines Road-US19 to I275 (Final Design)
- ❑ 22nd Ave. South-58th to 34th (Under Design)
- ❑ ITS/ATMS Signal System Upgrades (Underway)
- ❑ Progress Energy Trail (Under Construction)
- ❑ Eagle Lake Park (Final Design)

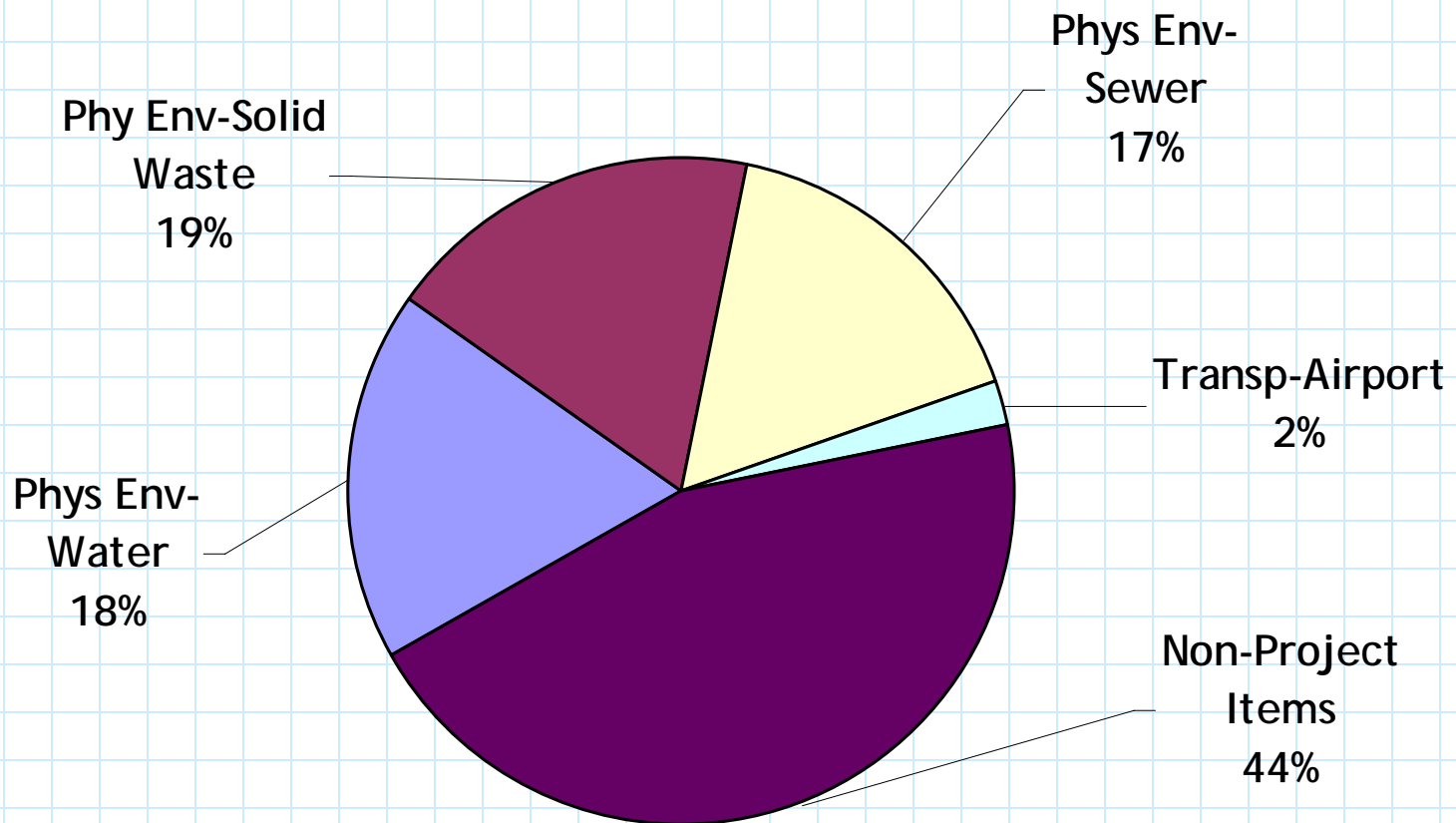
FY08 CIP- Governmental

- Highlights (Continued)

- ❑ Wall Springs/McMullen Tract (Under Design)
- ❑ Bee Branch Drainage Improvements (Under Design)
- ❑ Bear Creek Drainage Improvements (Under Design)
- ❑ Curlew Creek Channel A Phase III (Under Design)
- ❑ Tarpon Woods Drainage Improvement (Under Study)
- ❑ Alligator Creek Channel B Phase II (Under Construction)
- ❑ Joe's Creek Maintenance Dredging (Under Construction)
- ❑ Jail Campus Master Plan (Underway)
- ❑ Mobbly Bay Habitat Restoration (Underway)

FY08 CIP – Enterprise

Total: \$374,815,030



FY08 CIP- Enterprise

■ Highlights

- ❑ Airport - Commence Construction of Phase 1A of the Terminal.
- ❑ Water Blending Facility (Under Study)
- ❑ Belcher Road 48 Inch Main Replacement (Under Design)
- ❑ Galvanized Pipe/Backflow Device Replacements (Underway)
- ❑ Reclaimed Water Distribution System (Underway)
- ❑ Waste to Energy Facility Projects -Residue Processing/Storage Building, Furnace Improvements (Under Design)

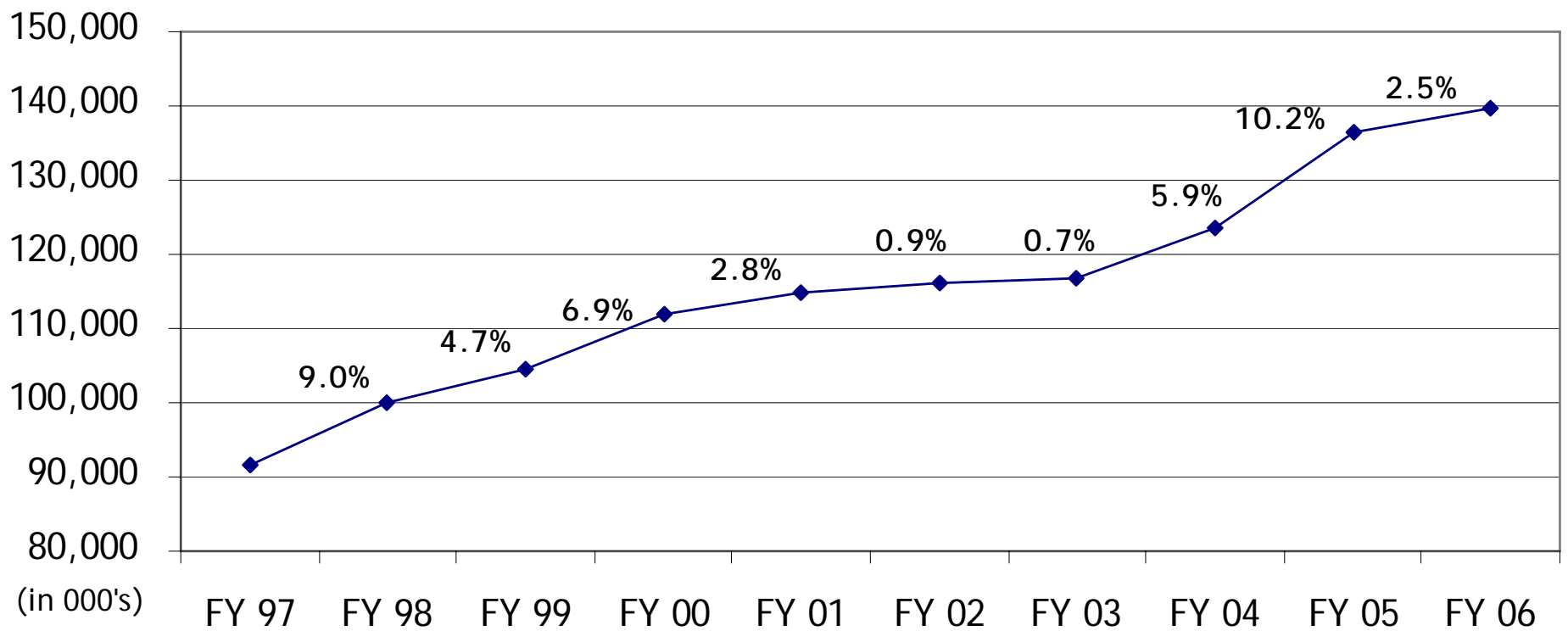
FY08 to 13 CIP Development

■ Major Revenue Sources

1. Penny for Pinellas Sales Tax
2. Transportation Impact Fees
3. Grants and Reimbursements
4. Tourist Development Tax ½ Cent
5. Enterprise Funds (Airport & Utilities)

■ Revenue projections on target but slowing

Penny Revenue 10 Year Percentage Growth



Capital Improvement Program Action Team

- New cross-functional team led by OMB to:
 - ❑ Expedite and report on progress of capital projects
 - ❑ Coordinate resolution of budget issues
 - ❑ Evaluate operating and maintenance costs associated with new projects
 - ❑ Account for Penny Promises in current and new Penny Program
 - ❑ Accelerate select projects from the newly approved Penny Program

Penny Promise Update

- Jail Phase II Project Being Completed
- Progress Energy Pinellas Trial Project Being Completed
- Belleair Causeway Bridge Under Construction
- Belcher Road-Alderman to Klosterman Construction Being Completed
- Mobbly Bay Preserve & Wall Springs Park Projects Progressing
- Twelve Future Roadway Segments Under Design
- Flood Reduction/Drainage Program Ongoing

New Penny Program Accelerated Projects

- Future Penny Projects Being Reviewed/Prioritized for Potential Acceleration
 - Are projects production ready?
 - Does cost/benefit of early production outstrip future inflation?
 - Is there value in immediate use?

(Projects such as)

- 118th Ave Expressway
- Jail Expansion & Court Improvements
- Public Safety Campus & Central Communications Center
- Public Works Emergency Responders Buildings

Question & Answer