



Enterprise Geographic Information Systems Update

Presented By

David James

Business Technology Services

Presented To

Business Technology Services Board

January 19th, 2012

The Importance of GIS

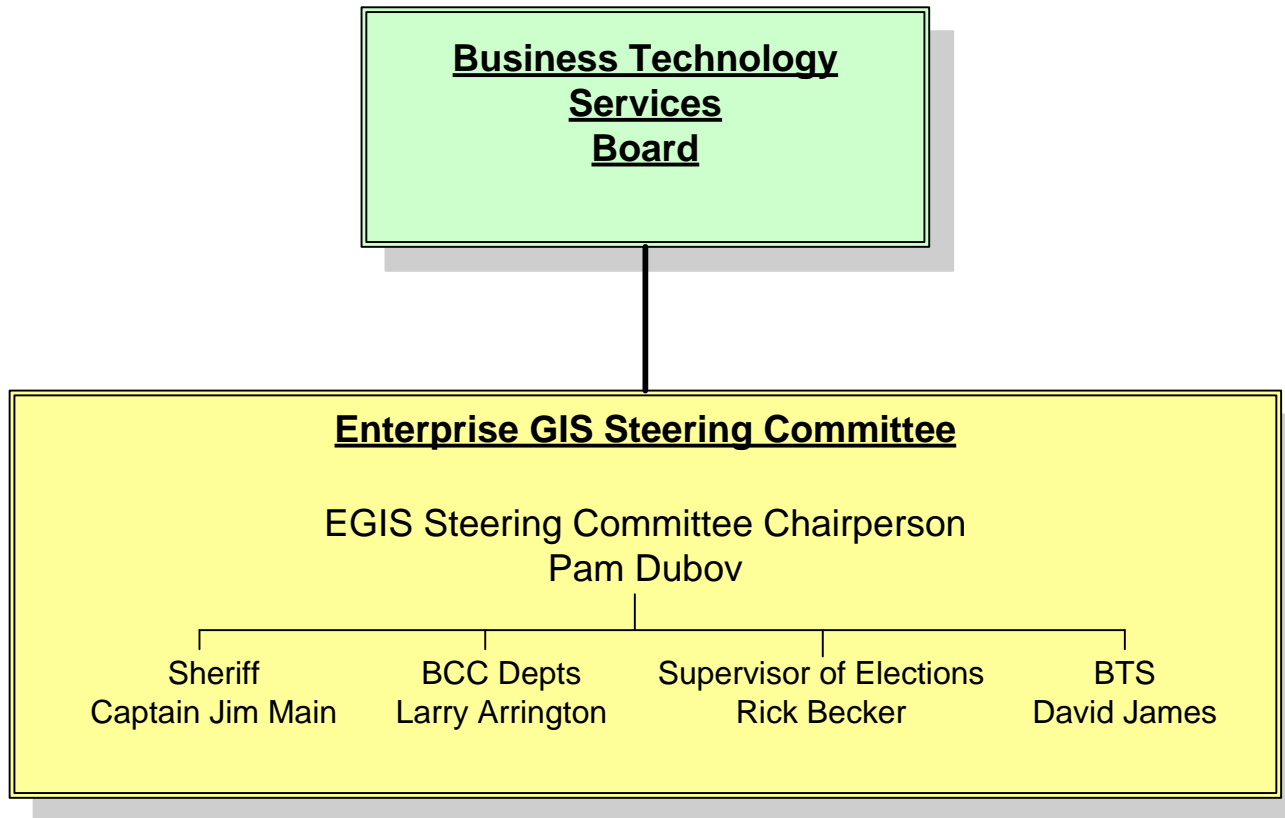
- GIS is a Critical Information Management, Data Analysis and Decision Support System:
- GIS Provides a Framework for Cross Functional Government Collaboration

Emergency Management	Land Planning & Development
Law Enforcement	Economic Development
Public Safety Services	Community Planning
Education	Public Health
Utilities	Highways
Property Appraisal	Elections

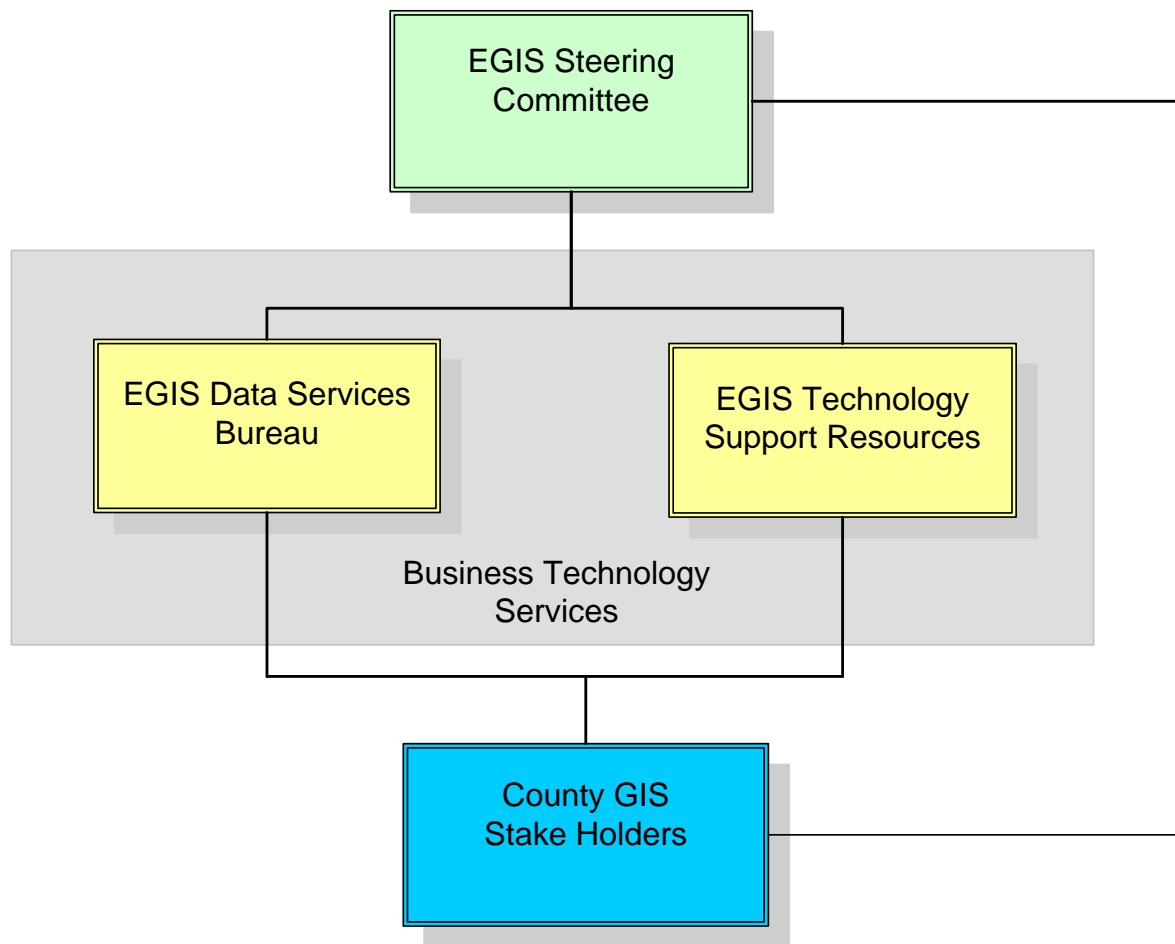
Pinellas County EGIS Vision

- Establish a common shared approach to the use and support of GIS
- Create a collaborative County wide GIS framework to support policy development and decision making and operational efficiency
- Leverage economies of scale to maximize investments and staff resources
- Protect and maintain critical GIS data resources that are essential to ensure citizen safety and welfare

EGIS Leadership



EGIS Data and Technology Support



EGIS Benchmark

Objectives:

- Establish EGIS Bureau
- Assess County GIS Issues
- Develop Initial Data Improvement and Maintenance Plan
- Assess New GIS Software Tools
- Develop Initial Upgraded GIS Technology Implementation Plan

EGIS Software Licensing

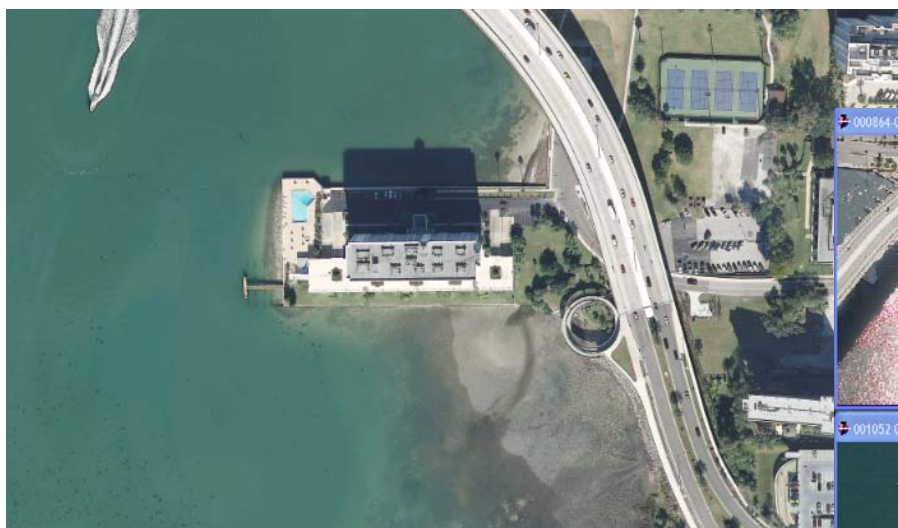
Objectives:

- Consolidate all County Departmental and Agency GIS licenses into a single agreement
- Negotiate Highly Discounted EGIS Agreement
- Extend Access to EGIS Licenses to All County Agencies and Partners
- Support Increased Citizen GIS Access

Aerial Imagery

Acquired County Wide HD Aerial Imagery

- Traditional and New Oblique Images



Ortho Image



Oblique Image

EGIS FY12 Budget

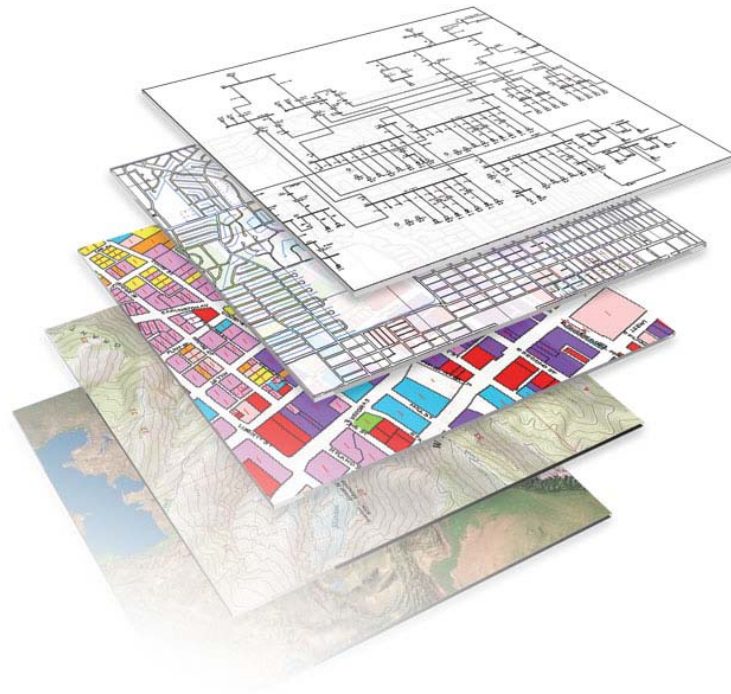
- EGIS Budget Controlled by EGIS Steering Committee:

Description	Budget
Oblique Aerial Imagery	\$90,000
EGIS Bureau Supervisor	\$105,000
PAO Bureau Staff Transfers	\$210,000
BTS Bureau Staff (in BTS budget)	\$0
EGIS Infrastructure	\$110,000
EGIS Software Licensing	\$300,000
EGIS Bureau/Developer Training	\$25,000
Street Level Imagery	\$480,000
Total:	\$1,320,000

Short Term Plans

- EGIS/Business Intelligence/Asset Management Vision Workshop & Strategy Development
- Formally Implement EGIS Bureau Data Support Services
- Establish Data Standards for Critical GIS Data
- Implement Upgraded EGIS Technology Foundation
- Complete EGIS Licensing Negotiations

Enterprise GIS Questions?



EGIS FY12 Budget

- EGIS Budget Controlled by EGIS Steering Committee:

Description	Budget
Oblique Aerial Imagery	\$90,000
EGIS Bureau Supervisor	\$105,000
PAO Bureau Staff Transfers	\$210,000
BTS Bureau Staff (in BTS budget)	\$0
EGIS Infrastructure	\$110,000
EGIS Software Licensing	\$300,000
EGIS Bureau/Developer Training	\$25,000
Street Level Imagery	\$480,000
Total:	\$1,320,000