



Enterprise GIS Update

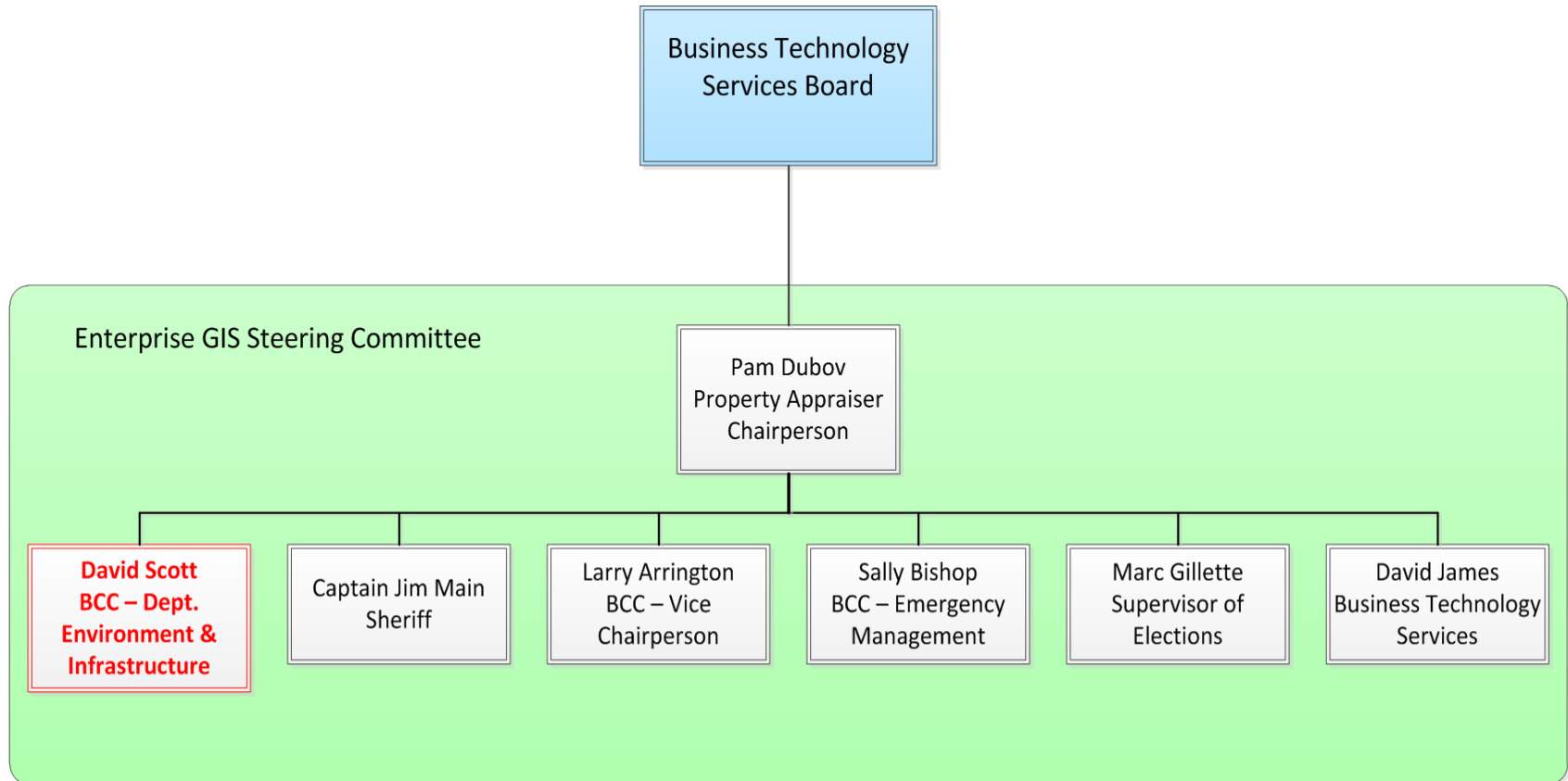
Business Technology Services Board Meeting

October 18th, 2012

Pam Dubov

Pinellas County Property Appraiser

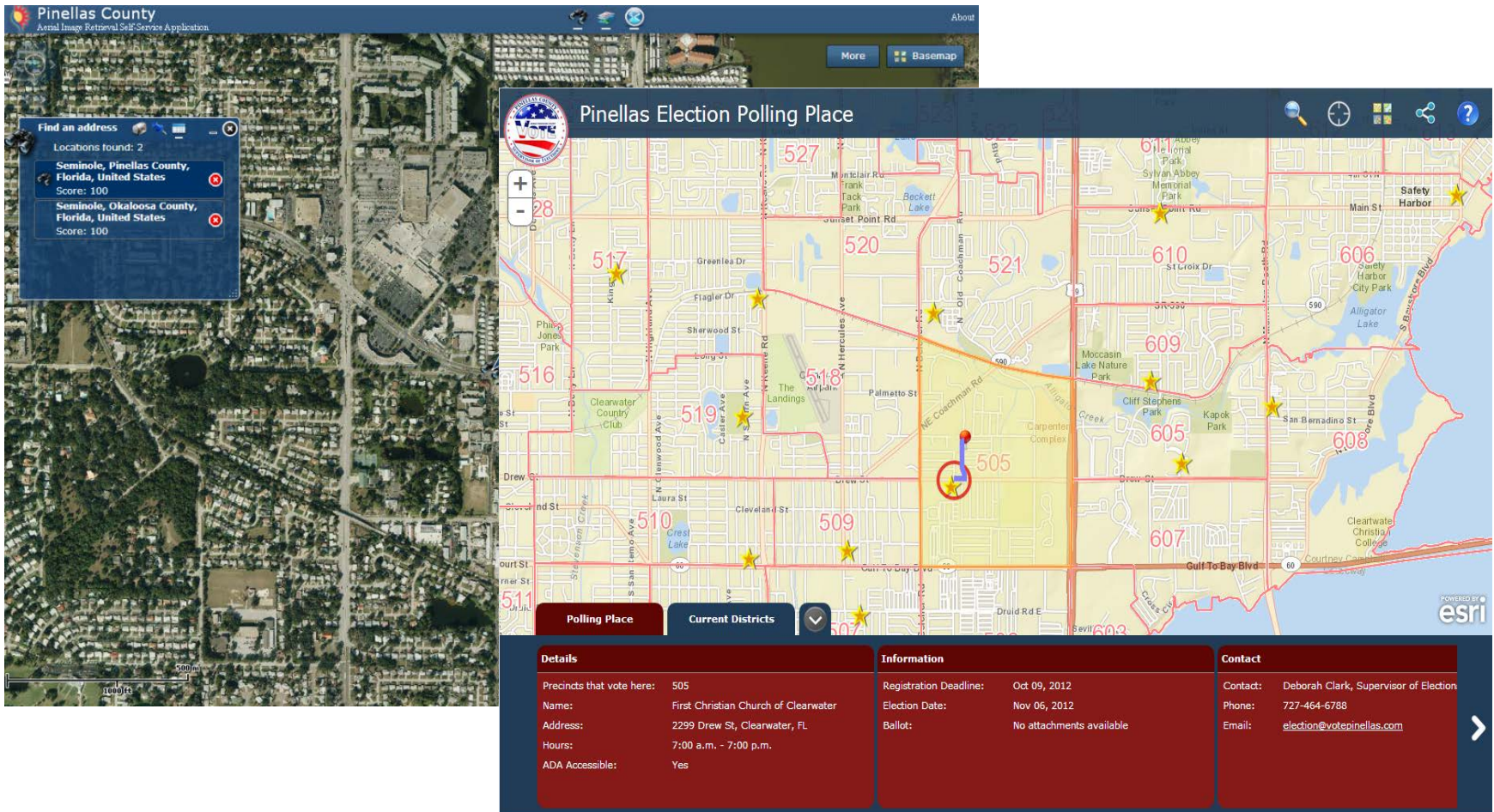
eGIS Recap – Steering Committee



eGIS Successes

- Enterprise GIS Bureau – 582-EGIS (3447)
- Overhauled Planning and Administrative data sets
- Aerial Images acquired in December 2010
- eGIS Server Infrastructure
- ESRI Enterprise Licensing Agreement
- New SOE and Aerial Imagery eGIS Applications

New eGIS Applications



Pinellas County
Aerial Image Retrieval Self-Service Application

Find an address
Locations found: 2
Seminole, Pinellas County, Florida, United States
Score: 100
Seminole, Okaloosa County, Florida, United States
Score: 100

Pinellas Election Polling Place

Details

Precincts that vote here:	505
Name:	First Christian Church of Clearwater
Address:	2299 Drew St, Clearwater, FL
Hours:	7:00 a.m. - 7:00 p.m.
ADA Accessible:	Yes

Information

Registration Deadline:	Oct 09, 2012
Election Date:	Nov 06, 2012
Ballot:	No attachments available

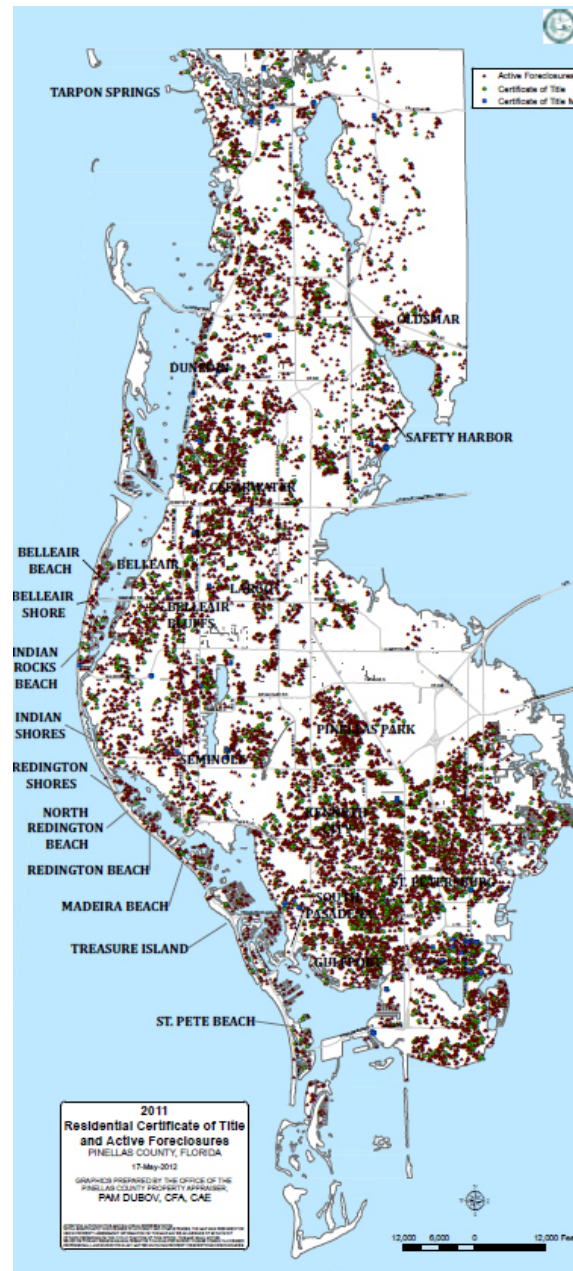
Contact

Contact:	Deborah Clark, Supervisor of Election
Phone:	727-464-6788
Email:	election@votepinellas.com

Challenges

- Maintaining data quality
- Determining business priorities
- Maximizing limited staff resources
- User training
- Leadership awareness of potential.....

Foreclosure Map



October 18th, 2012

Business Technology Services
Board

Future Activities

- Replacement of BCC legacy GIS
- Continuation of legacy data migration
- New eGIS Apps:
 - Tax Collector – Payment methods analysis
 - Emergency Management Damage Assessment
 - Citizen Information Center
 - Parks Finder
 - DEI Asset Management

Questions?

Contacts:

David James - 727.453-3626

Jason Graziano - 727.464-5109

eGIS Bureau - 727.582-3447

<http://www.pinellascounty.org/egis/default.htm>

<http://pinellas.sharepointsite.net/egis/default.aspx>