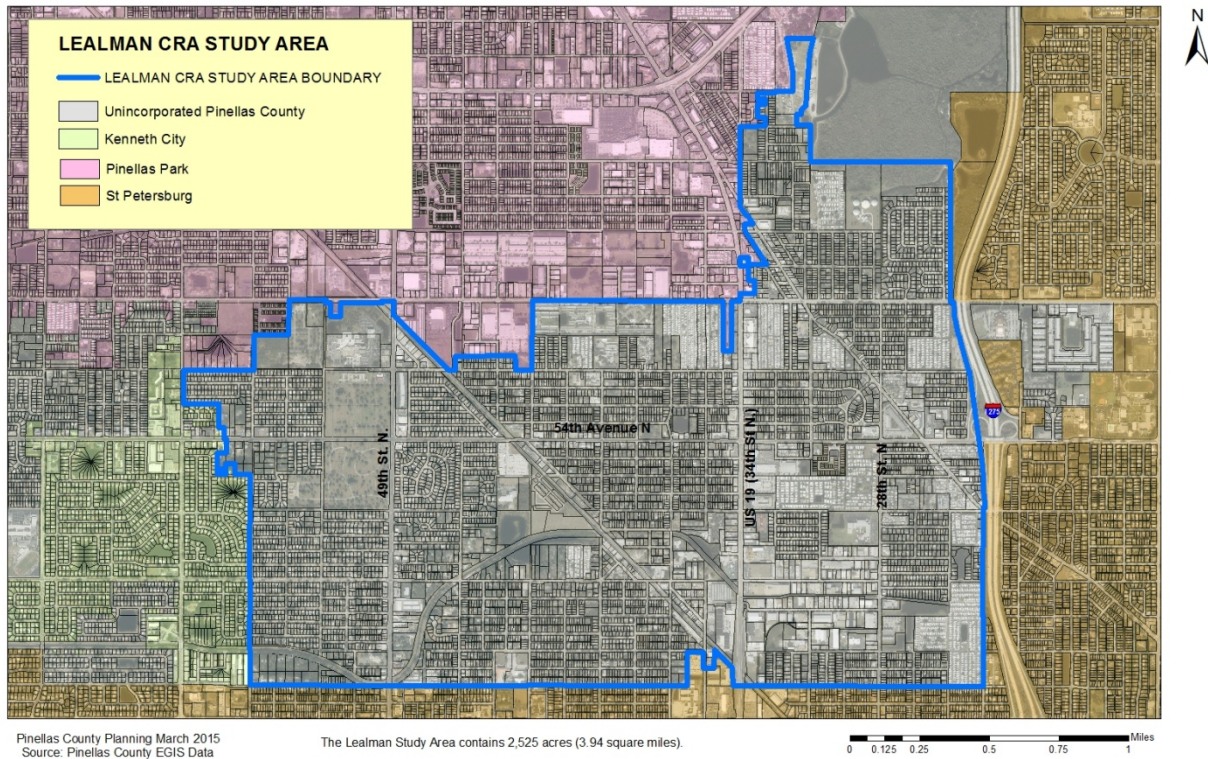


LEALMAN CRA MAP AND BOUNDARY DESCRIPTION



LEALMAN CRA BOUNDARY DESCRIPTION

An area of unincorporated Pinellas County, Florida, situated within Sections 26, 33, 34, and 35, Township 30 South, Range 16 East and Sections 2, 3, and 4, Township 31 South, Range 16 East, being described as follows:

Begin at the East Quarter Corner of Section 34, Township 30 South, Range 16 East,
 run N 00°01'W, for a distance of 150 feet more or less;
 thence S 89°47'E, for a distance of 274 feet more or less;
 thence N 00°25'E, for a distance of 240 feet more or less;
 thence N 89°46'W, for a distance of 126 feet more or less;
 thence N 00°05'W, for a distance of 274 feet more or less;
 thence N 89°59'W, for a distance of 150 feet more or less;
 thence N 00°02'W, for a distance of 165 feet more or less;
 thence S 90°00'E, for a distance of 150 feet more or less;
 thence S 00°08'E, for a distance of 139 feet more or less;
 thence N 89°59'E, for a distance of 345 feet more or less;
 thence N 32°20'W, for a distance of 709 feet more or less;
 thence N 28°25'W, for a distance of 73 feet more or less;
 thence N 00°03'E, for a distance of 111 feet more or less;
 thence S 89°50'E, for a distance of 162 feet more or less;
 thence N 31°49'W, for a distance of 186 feet more or less;

thence N 89°42'W, for a distance of 40 feet more or less;
 thence N 32°02'W, for a distance of 201 feet more or less;
 thence N 00°01'W, for a distance of 1515 feet more or less;
 thence S 89°48'E, for a distance of 333 feet more or less;
 thence N 00°04'E, for a distance of 18 feet more or less;
 thence S 89°47'E, for a distance of 137 feet more or less;
 thence N 00°04'E, for a distance of 150 feet more or less;
 thence N 89°47'W, for a distance of 137 feet more or less;
 thence N 00°04'E, for a distance of 250 feet more or less;
 thence S 89°47'E, for a distance of 137 feet more or less;
 thence N 00°04'E, for a distance of 100 feet more or less;
 thence N 89°47'W, for a distance of 137 feet more or less;
 thence N 00°04'E, for a distance of 114 feet more or less;
 thence S 89°50'E, for a distance of 333 feet more or less;
 thence N 00°04'E, for a distance of 30 feet more or less;
 thence S 89°50'E, for a distance of 329 feet more or less;
 thence N 00°38'E, for a distance of 372 feet more or less;
 thence N 10°41'W, for a distance of 640 feet more or less;
 thence S 89°52'E, for a distance of 503 feet more or less;
 thence S 14°07'W, for a distance of 285 feet more or less;
 thence S 04°07'W, for a distance of 1000 feet more or less;
 thence S 49°32'W, for a distance of 114 feet more or less;
 thence S 00°04'W, for a distance of 85 feet more or less;
 thence N 89°48'W, for a distance of 80 feet more or less;
 thence S 00°04'W, for a distance of 200 feet more or less;
 thence S 89°48'E, for a distance of 255 feet more or less;
 thence S 00°05'W, for a distance of 692 feet more or less;
 thence S 89°47'E, for a distance of 2657 feet more or less;
 thence S 00°00'E, for a distance of 2642 feet more or less;
 thence N 89°59'E, for a distance of 57 feet more or less;
 thence S 04°11'E, for a distance of 46 feet more or less to a Point on Curve, a radial to said point being S88°24'W;
 thence Southeasterly 711 feet more or less along the arc of a curve, concave to the east, having a radius of 2224 feet,
 through a central angle of 18°19', a chord bearing of S 10°46'E, 708 feet more or less to a Point of Non-Tangency;
 thence S 15°25'E, for a distance of 598 feet more or less to a Point on Curve, a radial to said point being N60°38'E;
 thence Southeasterly 32 feet more or less along the arc of a curve, concave to the west, having a radius of 56 feet,
 through a central angle of 33° 26', a chord bearing of S 12° 39'E, 32 feet more or less to a Point of Non-Tangency;
 thence S 07°49'E, for a distance of 1446 feet more or less;
 thence S 28°23'E, for a distance of 29 feet more or less;

thence S 10°21'E, for a distance of 78 feet more or less;
thence S 04°57'E, for a distance of 91 feet more or less;
thence S 05°09'E, for a distance of 341 feet more or less;
thence S 00°34'W, for a distance of 260 feet more or less;
thence S 06°25'E, for a distance of 247 feet more or less;
thence S 00°34'W, for a distance of 89 feet more or less;
thence N 56°42'W, for a distance of 36 feet more or less;
thence S 00°36'W, for a distance of 107 feet more or less;
thence S 00°34'W, for a distance of 1318 feet more or less;
thence S 89°52'E, for a distance of 5 feet more or less;
thence S 00°24'W, for a distance of 638 feet more or less;
thence S 89°51'E, for a distance of 25 feet more or less;
thence S 00°24'W, for a distance of 1326 feet more or less;
thence N 89°56'W, for a distance of 4739 feet more or less;
thence N 03°12'W, for a distance of 287 feet more or less;
thence N 03°00'E, for a distance of 49 feet more or less;
thence N 44°23'W, for a distance of 486 feet more or less;
thence S 00°25'W, for a distance of 340 feet more or less;
thence N 89°59'W, for a distance of 206 feet more or less;
thence N 00°19'E, for a distance of 295 feet more or less;
thence S 89°49'W, for a distance of 308 feet more or less;
thence S 00°35'W, for a distance of 631 feet more or less;
thence N 89°53'W, for a distance of 300 feet more or less;
thence S 87°15'W, for a distance of 56 feet more or less;
thence N 90°00'W, for a distance of 1932 feet more or less;
thence N 75°59'W, for a distance of 63 feet more or less;
thence N 89°51'W, for a distance of 670 feet more or less;
thence S 00°17'W, for a distance of 18 feet more or less;
thence N 89°28'W, for a distance of 609 feet more or less;
thence S 02°05'E, for a distance of 7 feet more or less;
thence N 89°52'W, for a distance of 1959 feet more or less;
thence N 89°38'W, for a distance of 2686 feet more or less;
thence N 00°35'E, for a distance of 591 feet more or less;
thence N 07°34'W, for a distance of 151 feet more or less;
thence N 00°46'E, for a distance of 1201 feet more or less;
thence N 06°34'W, for a distance of 131 feet more or less;
thence N 00°31'E, for a distance of 1914 feet more or less;
thence N 89°42'W, for a distance of 297 feet more or less;
thence N 00°24'E, for a distance of 199 feet more or less;
thence N 89°41'W, for a distance of 171 feet more or less;
thence S 00°24'W, for a distance of 199 feet more or less;
thence N 89°42'W, for a distance of 75 feet more or less;
thence N 00°24'E, for a distance of 94 feet more or less;
thence N 89°41'W, for a distance of 75 feet more or less;

thence S 00°24'W, for a distance of 94 feet more or less;
thence N 89°42'W, for a distance of 15 feet more or less;
thence N 00°23'E, for a distance of 399 feet more or less;
thence S 89°46'E, for a distance of 172 feet more or less;
thence N 00°31'E, for a distance of 214 feet more or less;
thence N 00°09'E, for a distance of 51 feet more or less;
thence N 89°56'W, for a distance of 37 feet more or less;
thence N 00°03'W, for a distance of 219 feet more or less;
thence N 89°44'W, for a distance of 100 feet more or less;
thence N 00°03'W, for a distance of 439 feet more or less;
thence N 89°47'W, for a distance of 670 feet more or less;
thence N 00°03'W, for a distance of 647 feet more or less;
thence S 89°57'E, for a distance of 1326 feet more or less;
thence N 00°21'E, for a distance of 667 feet more or less;
thence S 89°53'E, for a distance of 659 feet more or less;
thence N 00°33'E, for a distance of 660 feet more or less;
thence S 89°56'E, for a distance of 691 feet more or less;
thence S 00°37'W, for a distance of 50 feet more or less;
thence S 89°56'E, for a distance of 100 feet more or less;
thence S 00°44'W, for a distance of 265 feet more or less;
thence S 89°56'E, for a distance of 179 feet more or less;
thence N 00°44'E, for a distance of 265 feet more or less;
thence S 89°56'E, for a distance of 802 feet more or less;
thence N 43°56'W, for a distance of 34 feet more or less;
thence S 89°57'E, for a distance of 235 feet more or less;
thence S 00°27'W, for a distance of 238 feet more or less;
thence S 44°21'E, for a distance of 1434 feet more or less;
thence S 50°06'E, for a distance of 6 feet more or less;
thence S 43°00'E, for a distance of 41 feet more or less;
thence N 89°56'E, for a distance of 135 feet more or less;
thence N 00°10'E, for a distance of 259 feet more or less;
thence N 89°36'E, for a distance of 1126 feet more or less;
thence S 00°03'W, for a distance of 91 feet more or less;
thence N 90°00'E, for a distance of 15 feet more or less;
thence S 00°00'W, for a distance of 185 feet more or less;
thence N 89°58'E, for a distance of 312 feet more or less;
thence N 00°07'E, for a distance of 1325 feet more or less;
thence S 89°47'E, for a distance of 3613 feet more or less;
thence S 00°09'E, for a distance of 949 feet more or less;
thence S 89°47'E, for a distance of 164 feet more or less;
thence N 00°14'W, for a distance of 949 feet more or less;
thence S 89°52'E, for a distance of 164 feet more or less to the POINT OF BEGINNING.

Containing: 109,986,201 square feet or 2,524.936 acres more or less.