

Pinellas County Board of County Commissioners (BCC)
BCC Assembly Room
315 Court Street, 5th Floor
Clearwater, Florida 33756

August 13, 2013

WORK SESSION AGENDA

9:30 a.m.

1. [Cross Bar Ranch and Al Bar Ranch; Options for Disposition of Land](#)
2. [Fiscal Year 2014 Budget Discussion and Feedback](#)

Order of Items is Subject to Change. All Times are Approximate. Break May be Taken.

Citizens' Comments Will Follow Presentation

Any Person Wishing to Speak During the "Citizens' Comments" Portion of the Work Session Agenda Must Have a Blue Card Completed and Given to the Agenda Staff at the Staff Table. The Chairman Will Call the Speakers, One by One, to the Podium to be Heard. Each Speaker May Speak up to Three (3) Minutes.



Cross Bar/Al Bar Ranch

Preserving a Sustainable Habitat

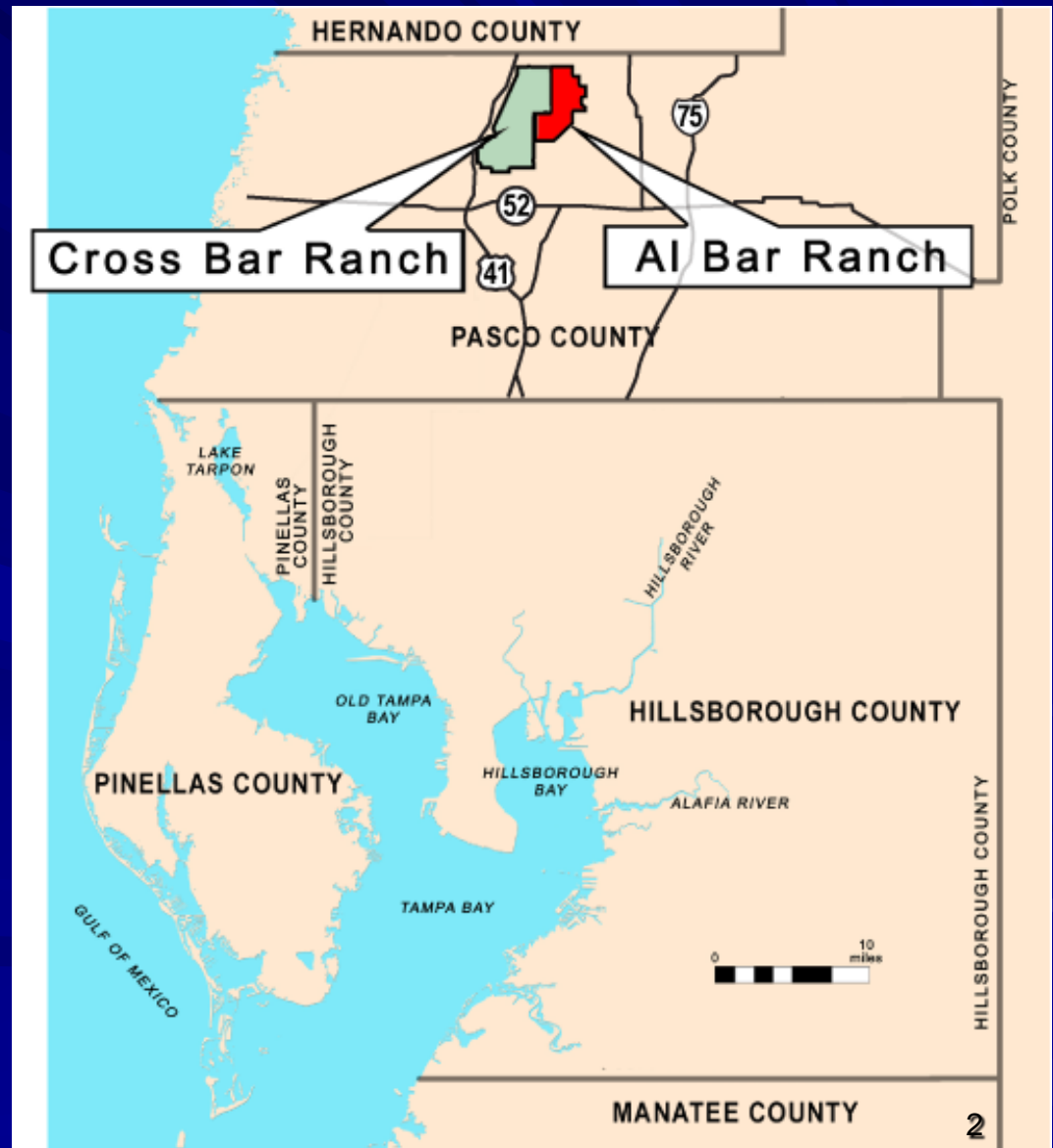


By

*David Scott, Executive Director
Pinellas County DEI
August 13, 2013*

Cross Bar/Al Bar Ranch

- Cross Bar purchased in 1976
- Al Bar purchased in 1990
- 12,400 acres located in north central Pasco County
- Purchased price of \$11.1 Million

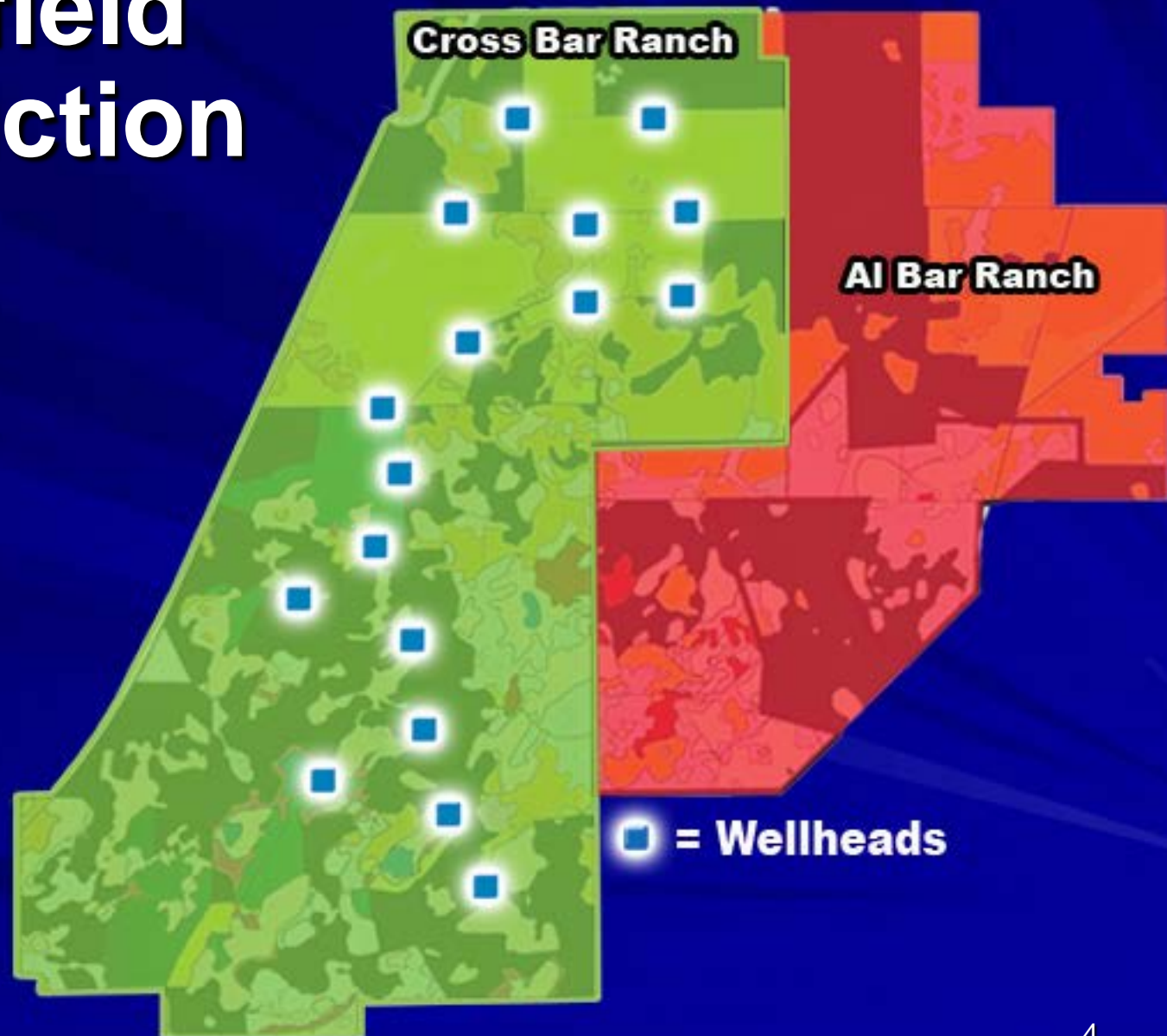


History & Background



- Cross Bar property previously utilized for cattle ranching and citrus groves
- Wellfield began production in 1980 on Cross Bar
- Total Ecosystem Management Program initiated in 1992

Wellfield Production



Environmental Sustainability



Management Plan

- Ecosystem management
 - forest & pine straw production
 - cattle ranching
 - habitat enhancement
- Florida Scrub Jay Management Program
- Educational outreach



A photograph of a forest with tall, thin trees and a dirt path. The trees are dark brown and have sparse foliage. The ground is covered in brown pine needles and some green grass. The background is slightly blurred, showing more trees and a hint of a building.

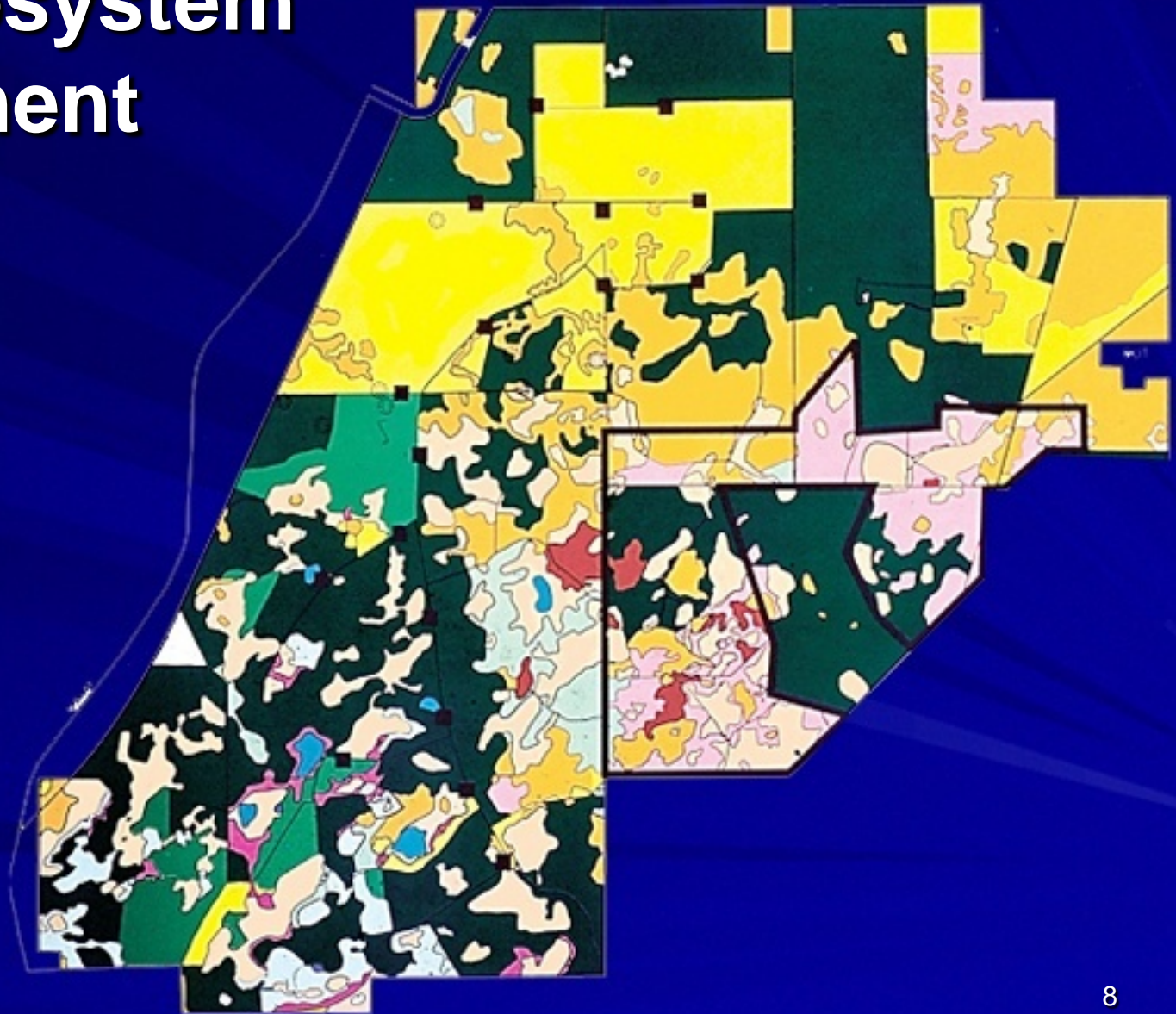
Ecosystem Management

- Land management stewardship team established in 1992
- Best land use was determined:
 - 1,500 acres of active agriculture production
 - 4,800 acres of forestry production
 - 6,100 acres of environmental wetlands, lakes, and wildlife habitats

Cross Bar/Al Bar Total Ecosystem Management Plan

MAP LEGEND

- Slash Pine Planting
- Longleaf Pine Planting
- Natural Pine
- Hardwood Hammocks
- Hardwood Scrub
- Cypress
- Native Range
- Wet Prairie
- Open water
- Myrtle Scrub
- Pasture



Wildlife Management

- Annual wildlife surveys and habitat enhancement program began in 1992
- In October 2000, Cross Bar/Al Bar Ranch recognized by Audubon as an “*Important Bird Area.*”
- 1,500 acres were designated as a “Significant Scrub-Jay Management Area”





Wildlife Management

- Nineteen listed species of concern
- Enhanced habitats for five keystone listed species: Florida sandhill crane, Florida burrowing owl, scrub jay, gopher tortoise and southern kestrel

Augmentation

- Augmentation helps mitigate impacts of drought and provide additional habitat areas



Augmentation

- More than 300 acres of lakes and wetlands are being augmented at 30 separate sites for wetland dependent species



Land Management

- Management in residence
- Ongoing active agricultural operations
- Services include security, fire control, environmental resource enhancement, monitoring, pine forest maintenance, pine replanting, and fence and road maintenance
- Long term residential management strategy greatly impacts quality of performance



Forestry Management

- 4,300 acres planted with 4.2 million slash pines
- 500 acres planted with long leaf pines
- Pine needle harvesting and timber sales generating \$6.2 million over past decade

Economic Sustainability



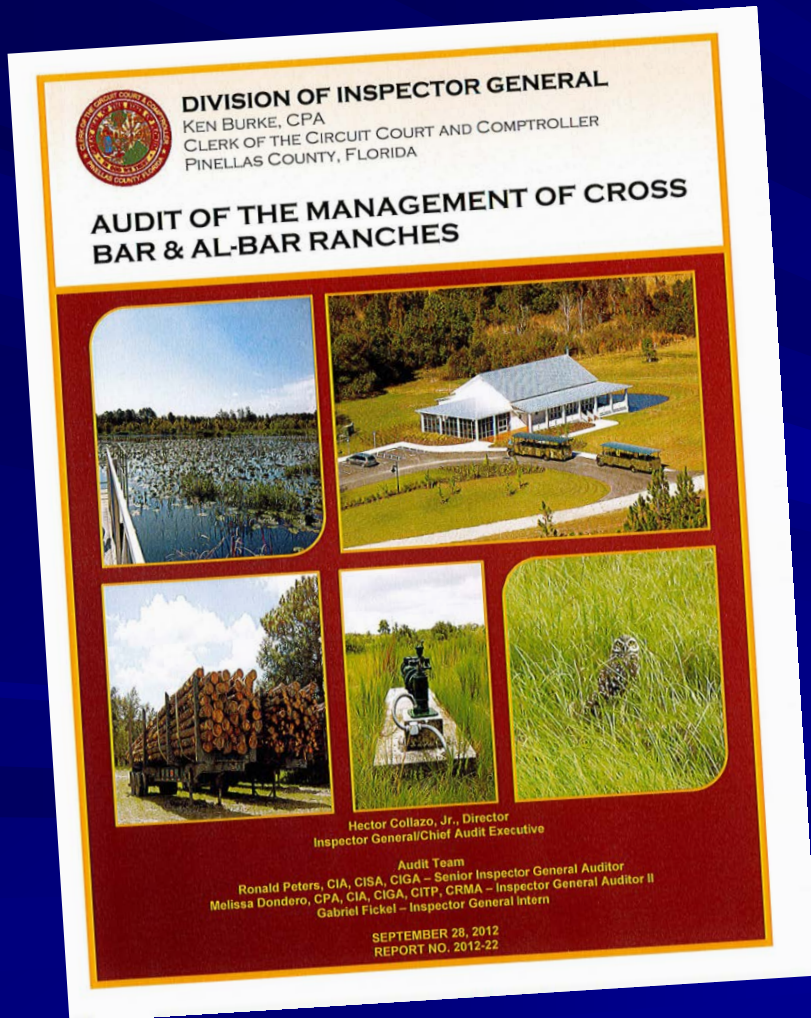


Economics

- 19 year cycle of timber production and sales generates revenues to offset long term expenses
- Pine straw revenues offset annual expenses

IG Audit Findings

Operations (2001 to 2012)



- Expenses: (\$7.99) million
- Revenue: \$6.86 million
- Profit/(Loss): (\$1.13) million



Financial Update

- Pine Timber harvesting is cyclical – now in a cycle of receiving revenue
- 2012 Profit = \$343,000
- 2013 Profit (YTD) = \$290,000
- Timber harvest for seven more years

Social Sustainability



Facilities

- On December 9, 2003, a Visitors Center was opened on the property
- Center is an outstanding vista for retreats and other meeting opportunities



The Visitor Center

- Multi-purpose/class room
- Teachers office
- Kitchen and lunch room
- Outdoor classroom gazebo



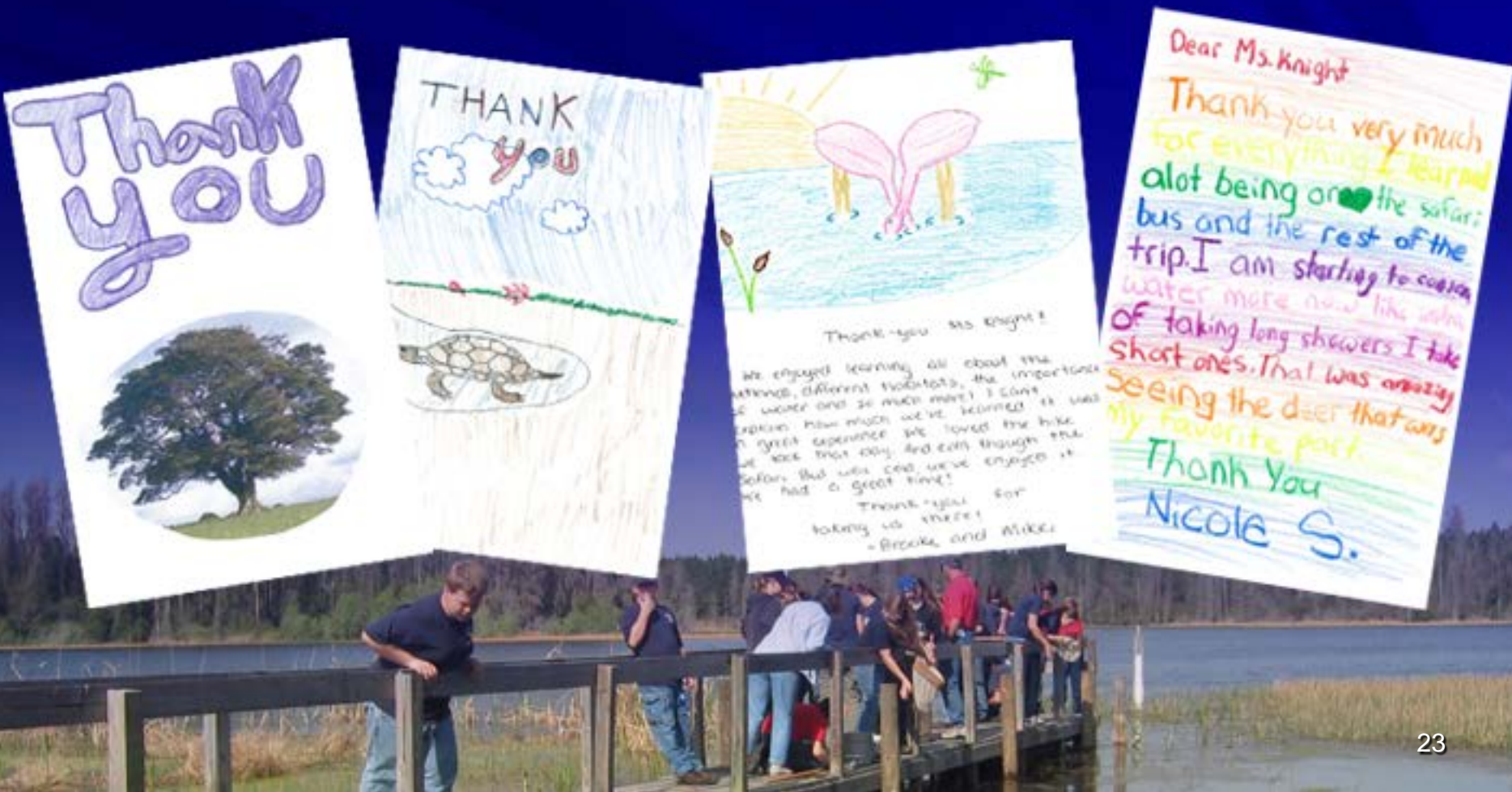
Education Programs

- Curriculum reaches out to 2,700 Pasco County 7th grade students annually who learn about aquifers, the hydrologic cycle, conservation, wildlife, water biology and watershed protection



Outreach Effectiveness

- The best testament of our success comes from the students themselves...*



Recognition and Awards

- Cross Bar/Al Bar Ranch was featured in an episode of Jack Hanna's *Animal Adventures*—a syndicated show appearing in 41 countries
- Jack Hanna refers to Cross Bar/Al Bar Ranch as a “*pristine parcel of land with an abundance of natural beauty and incredible wildlife.*”





Recognition and Awards

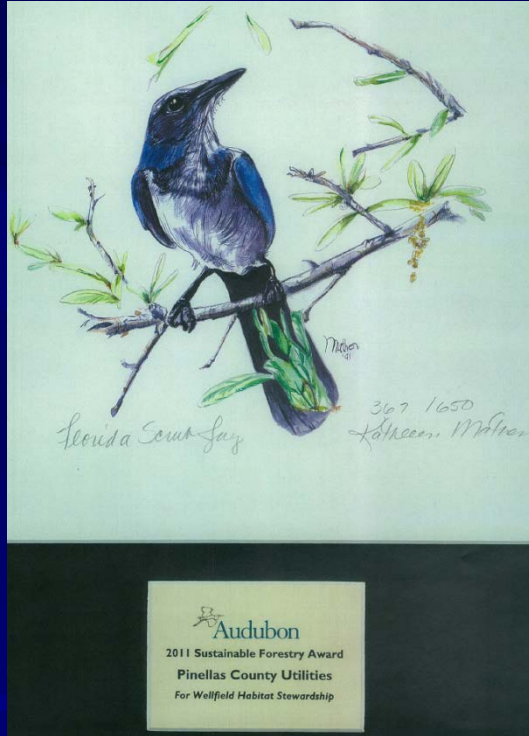
1997

- **Florida Academy of Sciences**
Ecosystem and Wildlife Management at the Cross Bar Wellfield
- **Tampa Bay Regional Planning Council**
Future of the Region Awards – Meritorious
Ecosystem and Wildlife Management Practices

2004

- **Recycle Florida Today, Inc.**
Outstanding Environmental Initiative Award
Cross Bar Ranch Educational Partnership with Pasco County School Board
- **MarCom Awards**
Gold Finalist Winner
(Video) Cross Bar Ranch

Recognition and Awards



2006

- League of American Communications Professionals
2006 Spotlight Awards
Bronze Award – Cross Bar Ranch brochure

2011

- Audubon Sustainable Forestry Award for
Wellfield Habitat Stewardship



Future Strategic Options

- Hire a consultant to develop a 20 year Master Plan and consider public-private partnerships for best use of the property
- Sell property to other public agencies for preservation
- Other

Work Session: August 13, 2013

Item No.: 2

NO SUPPORTING DOCUMENTATION