

Healthy Communities Tour Packet

Monday, May 7, 2012

South County

Monday, May 14, 2012

North County

The purpose of the tours is to gain a snapshot view of the condition of the natural and built environment of neighborhoods in distress and explore the challenges of

.....

- Housing, infrastructure, education, homelessness
- Public safety, recidivism, and victimization
- Access to health and substance abuse assistance
- Economic development and job creation
- Changeable regulatory environment and mandates

Healthy Communities Tours

Mondays, May 7 and 14th, 2012

TABLE OF CONTENTS

| | <u>Page</u> |
|--|-------------|
| SOUTH COUNTY | |
| Point B Pinellas County Health Department – St. Petersburg Center | 3 |
| Pont C Pinellas County Job Corp Center | 3 |
| Point D Johnnie Ruth Clark Health Center | 4 |
| Point E Sweetbay Supermarket | 4 |
| Point F Perkins Elementary Center for the Arts & International Studies | 5 |
| Point G James B. Sanderlin Elementary School | 5 |
| Point H Lakeview Fundamental Elementary School | 6 |
| Point I Academy Prep School | 6 |
| Point J Sanderlin Neighborhood Family Center | 7 |
| Point K Doug Jamerson Elementary School | 7 |
| Point L Head Start Child Development & Family Center | 8 |
| Point M Fairmount Park Elementary School | 8 |
| Point N Childs Park YMCA | 9 |
| Point O FL Dept. of Corrections Work Release Center | 9 |
| Point P HOWCO Oil Recovery | 10 |
| Point Q Childs Park Recreation Center | 10 |
| Point T Lealman and Asian Neighborhood Family Center | 11 |
| Other Point of Interest in Central Lealman | 12 |
| Point Y Pinellas County Health Department – Mid-County Center | 13 |
| NORTH COUNTY | |
| Point C Pinellas County Jail | 14 |
| Pinellas Public Safety Coordinating Council Indicators Report | 15-21 |
| Legend - Pinellas County Crime Viewer | 22 |
| Crime Map for Lealman Corridor | 23 |
| Crime Map for High Point | 24 |
| Crime Map for South St. Petersburg | 25 |
| Point C Pinellas Safe Harbor | 26 |
| Homeless Encampments Encountered by Pinellas County Code Enforcement Division and the Pinellas County Sheriff's Office | 27-30 |
| Former Pain Management Sites – Phoenix and Whitney Enterprise | 31-35 |
| Point E Agency for Community Treatment Service (ACTS) | 36 |
| Point F Union Academy Neighborhood Family Center | 36 |
| Point H Homeless Encampment Complaint on County-Owned Property | 37 |

Point B
Pinellas County Health Department
St. Petersburg Center



205 M.L. King Street N., St. Petersburg

Point C
Pinellas County Job Corp Center



500 22nd St S., St. Petersburg

Point D
Johnnie Ruth Clark Health Center



1344 22nd St. S., St. Petersburg

Point E
Sweetbay Supermarket



1794 22nd St. S., St. Petersburg

Point F
**Perkins Elementary Center
for the Arts & International Studies**



2205 18th Ave. S, St. Petersburg

Point G
James B. Sanderlin Elementary IB World School



2350 22nd Ave. S., St. Petersburg

Point H
Lakeview Fundamental Elementary School



2229 25th St. S., St. Petersburg

Point I
Academy Prep School



2301 22nd Ave. S., St. Petersburg

Point J
Sanderlin Neighborhood Family Center



2335 22nd Ave. S., St. Petersburg

Point K
Doug Jamerson Elementary School



1200 37th St. S., St. Petersburg

Point L
Head Start Child Development & Family Center



3600 Fairfield Ave. S., St. Petersburg

Point M
Fairmount Park Elementary School



575 41st St S., St. Petersburg

Point N
Childs Park YMCA



691 43rd St. S., St. Petersburg

Point O
FL Dept. of Corrections Work Release Center



4237 8th Ave. S., St. Petersburg

Point P HOWCO Oil Recovery



843 43rd St. S., St. Petersburg

Point Q Childs Park Recreation Center



4301 13th Ave. S., St. Petersburg

Point T
Lealman and Asian Neighborhood Family Center



4255 56th Ave. N., St. Petersburg

Other Points of Neighborhood Interest



Placement of 2nd Pedestrian Bridge
at Joe's Creek Greenway Park in Central Lealman

- ☐ Funds (\$247,500) secured by Parks through annual HUD appropriation
- ☐ Separate from CDBG entitlement funds received by Community Development
- ☐ August 30, 2011 - Bridge delivered to Joe's Creek Park
- ☐ September 30, 2011 – HUD appropriation grant deadline
- ☐ Bridge purchase/delivery preceded design, permitting and stabilization of site due to grant deadline
- ☐ April/May 2012 - Design and permitting completed
- ☐ June 2012 - Advertise and construction process
- ☐ May 2013 – Construction/placement of bridge completed

**Point Y
Pinellas County Health Department
Mid County Center**



8751 Ulmerton Rd., Suite 2000, Largo

Point C Pinellas County Jail



14400 49th St. N., Clearwater

- Located on 54 acres of land in central Pinellas County
- Statutory responsibility of BCC
- By Ordinance, the Sheriff is the Chief Corrections Officer
- In September 2006, after an average daily population spike of 3,762 inmates, the BCC approved a justice system process study to help address crowding concerns.
- In 2011, the jail saw just over 47,000 bookings.
- The March 2012 average daily population was 3,051 with a current jail capacity of 3,271 beds.

Pinellas Public Safety Coordinating Council Indicators Report



April 23, 2012

Pinellas County Jail

Average Daily Inmate Population

| Pinellas Average Daily Inmate Population | | | | | | | | |
|---|-------------|-------------|-------------|-------------|-------------|-------------|-------------|-------------|
| | <u>2005</u> | <u>2006</u> | <u>2007</u> | <u>2008</u> | <u>2009</u> | <u>2010</u> | <u>2011</u> | <u>2012</u> |
| | | | | | 2981 | 3172 | 3045 | 3084 |
| January | 3080 | 3422 | 3671 | 3637 | 2974 | 3126 | 3020 | 3083 |
| February | 3147 | 3477 | 3698 | 3529 | 3009 | 3128 | 2926 | 3051 |
| March | 3160 | 3585 | 3616 | 3412 | | | | |
| April | 3206 | 3536 | 3545 | 3551 | 3132 | 3163 | 2975 | |
| May | 3274 | 3650 | 3547 | 3596 | 3193 | 3151 | 3020 | |
| June | 3363 | 3687 | 3546 | 3501 | 3248 | 3194 | 3077 | |
| July | 3352 | 3673 | 3536 | 3355 | 3234 | 3253 | 3077 | |
| August | 3354 | 3705 | 3539 | 3336 | 3288 | 3242 | 3112 | |
| September | 3399 | 3762 | 3613 | 3267 | 3400 | 3245 | 3240 | |
| October | 3488 | 3736 | 3600 | 3202 | 3375 | 3197 | 3256 | |
| November | 3548 | 3674 | 3610 | 3112 | 3307 | 3120 | 3178 | |
| December | 3428 | 3552 | 3582 | 2924 | 3157 | 3050 | 3082 | |

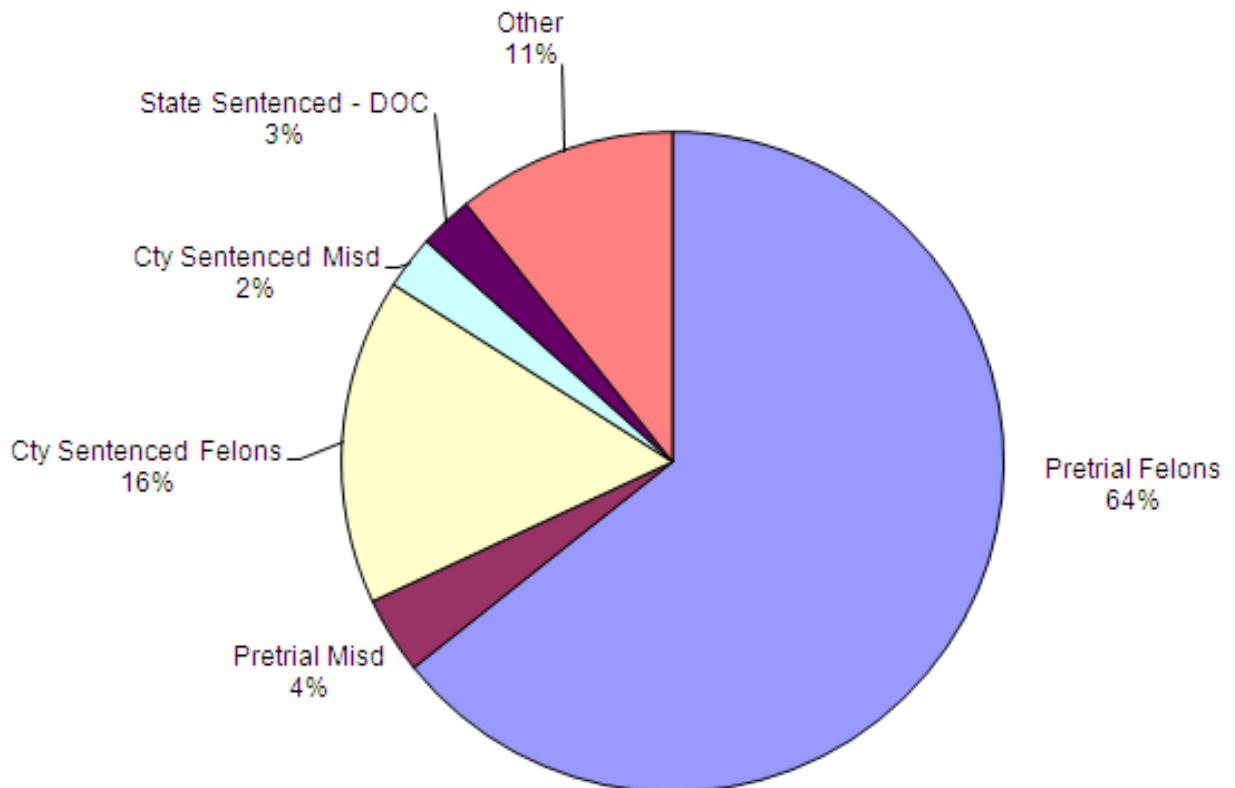
| Pinellas Percentage Change by Month | | | | | | | | |
|--|-------------|-------------|-------------|-------------|-------------|-------------|-------------|-------------|
| | <u>2005</u> | <u>2006</u> | <u>2007</u> | <u>2008</u> | <u>2009</u> | <u>2010</u> | <u>2011</u> | <u>2012</u> |
| January | | -0.2% | 3.4% | 1.5% | 1.9% | -0.5% | -0.2% | 0.1% |
| February | 2.2% | 1.6% | 0.7% | -3.0% | -0.2% | -1.5% | -0.8% | 0.0% |
| March | 0.4% | 3.1% | -2.2% | -3.3% | 1.2% | 0.1% | -3.1% | -1.0% |
| April | 1.5% | -1.4% | -2.0% | 4.1% | 4.1% | 1.2% | 1.7% | |
| May | 2.1% | 3.2% | 0.1% | 1.3% | 1.9% | -0.4% | 1.5% | |
| June | 2.7% | 1.0% | 0.0% | -2.6% | 1.7% | 1.3% | 1.9% | |
| July | -0.3% | -0.4% | -0.3% | -4.2% | -0.4% | 1.8% | 0.0% | |
| August | 0.1% | 0.9% | 0.1% | -0.6% | 1.7% | -0.3% | 1.1% | |
| September | 1.3% | 1.5% | 2.1% | -2.1% | 3.4% | 0.4% | 4.1% | |
| October | 2.6% | -0.7% | -0.4% | -2.0% | -0.7% | -1.8% | 0.5% | |
| November | 1.7% | -1.7% | 0.3% | -2.8% | -2.0% | -2.4% | -2.4% | |
| December | -3.4% | -3.3% | -0.8% | -6.0% | -4.5% | -2.2% | -3.0% | |

3 Month Jail Population Breakdown

| | Jan-12 | Feb-12 | Mar-12 |
|-----------------------|--------|--------|--------|
| Pretrial Felons | 1947 | 1933 | 1962 |
| Pretrial Misd | 129 | 124 | 115 |
| Cty Sentenced Felons | 478 | 497 | 486 |
| Cty Sentenced Misd | 72 | 79 | 80 |
| State Sentenced - DOC | 102 | 99 | 80 |
| Other | 356 | 351 | 328 |
| Ave Daily Population | 3084 | 3083 | 3051 |

DETENTION AND CORRECTIONS BUREAU Percentages of Average Daily Inmate Population

March 2012

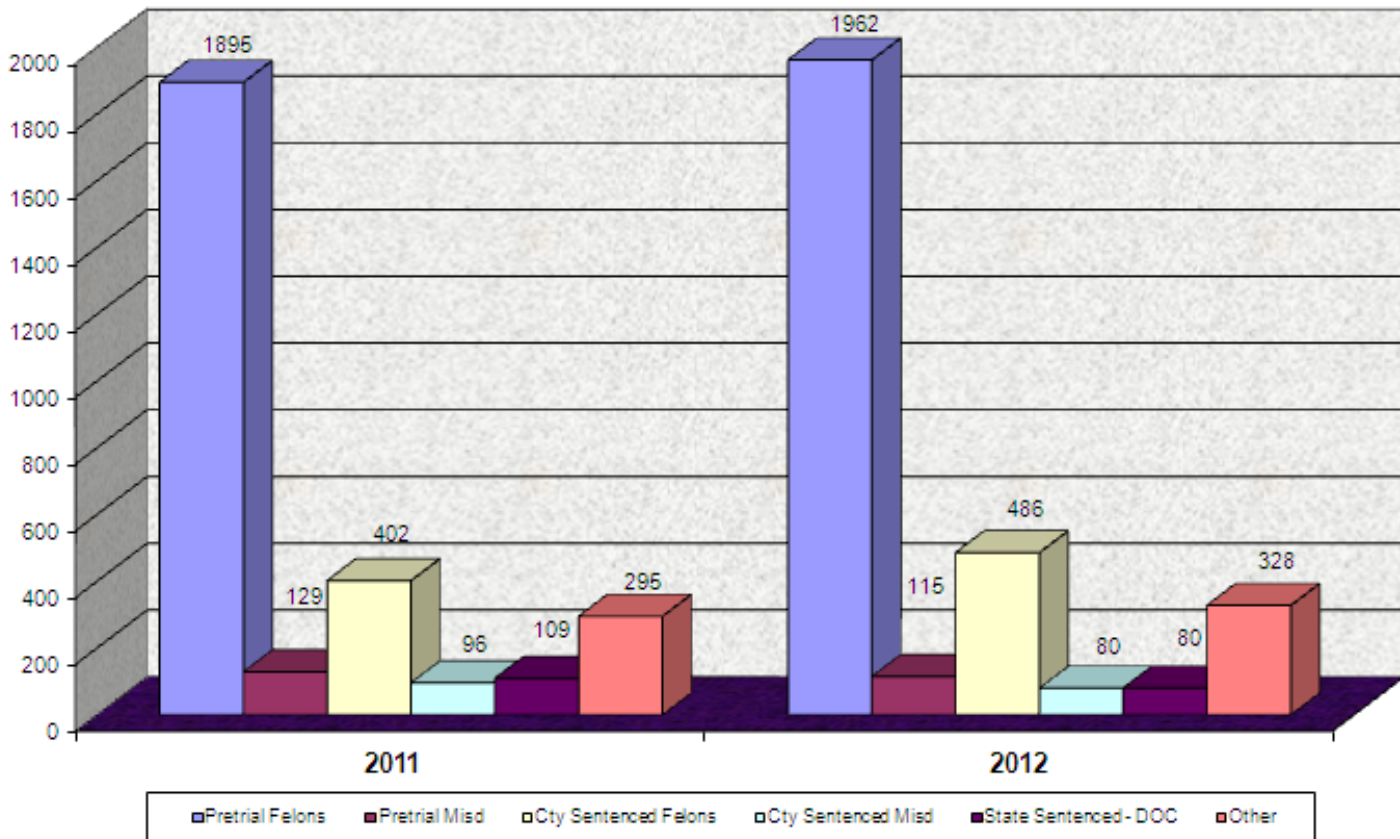


March 2011 and March 2012 ADP Comparison by Category

DETENTION AND CORRECTIONS BUREAU
Average Daily Inmate Population

ADP 2926

ADP 3051



Arrests by Agency

Arrests by Agency January - December 2011

| Agency | 1 st Qtr | 2 nd Qtr | 3 rd Qtr | 4 th Qtr | Total YTD |
|------------------|---------------------|---------------------|---------------------|---------------------|---------------|
| Bay Pines Police | 1 | 18 | 5 | 10 | 34 |
| Belleair | 7 | 4 | 8 | 11 | 30 |
| Campus Police | 3 | 3 | 1 | 2 | 9 |
| Clearwater | 1,126 | 1,023 | 1,170 | 965 | 4,284 |
| DOC Probation | 36 | 43 | 55 | 42 | 176 |
| EPA | 1 | 1 | 10 | 2 | 14 |
| FDLE | 1 | 1 | 0 | 0 | 2 |
| FHP | 75 | 89 | 69 | 65 | 298 |
| Fish & Wildlife | 9 | 11 | 13 | 8 | 41 |
| Marine Patrol | 0 | 0 | 0 | 0 | 0 |
| Gulfport | 75 | 81 | 103 | 85 | 344 |
| Indian Shores | 39 | 31 | 36 | 35 | 141 |
| Kenneth City | 45 | 43 | 39 | 49 | 176 |
| Largo | 819 | 870 | 888 | 736 | 3,313 |
| PCSO | 5,194 | 5,422 | 5,211 | 4,879 | 20,706 |
| Pinellas Park | 625 | 658 | 615 | 597 | 2,495 |
| St. Pete | 2,611 | 2,722 | 2,840 | 2,483 | 10,656 |
| St. Pete Bch | 121 | 134 | 112 | 103 | 470 |
| Tarpon Springs | 182 | 181 | 227 | 188 | 778 |
| Treasure Island | 134 | 237 | 135 | 117 | 623 |
| Other | 684 | 717 | 722 | 641 | 2,764 |
| USF Campus PD* | 2 | 3 | 1 | 4 | 10 |
| US Probation | 2 | 0 | 6 | 4 | 12 |
| Total | 11,792 | 12,292 | 12,266 | 11,026 | 47,376 |

Arrests by Agency January - December 2010

| Agency | 1 st Qtr | 2 nd Qtr | 3 rd Qtr | 4 th Qtr | Total YTD |
|------------------|---------------------|---------------------|---------------------|---------------------|---------------|
| Bay Pines Police | 15 | 9 | 10 | 6 | 40 |
| Belleair | 0 | 7 | 5 | 4 | 16 |
| Campus Police | 1 | 1 | 1 | 1 | 4 |
| Clearwater | 1,366 | 1,396 | 1,303 | 1,115 | 5,180 |
| DOC Probation | 0 | 3 | 42 | 50 | 95 |
| EPA | 0 | 1 | 3 | 2 | 6 |
| FDLE | 0 | 0 | 1 | 0 | 1 |
| FHP | 50 | 49 | 51 | 73 | 223 |
| Fish & Wildlife | 0 | 0 | 0 | 1 | 1 |
| Marine Patrol | 0 | 0 | 1 | 0 | 1 |
| Gulfport | 91 | 112 | 92 | 86 | 381 |
| Indian Shores | 26 | 41 | 31 | 24 | 122 |
| Kenneth City | 46 | 65 | 54 | 54 | 219 |
| Largo | 823 | 841 | 344 | 859 | 2,867 |
| PCSO | 5,413 | 5,183 | 5,356 | 4,917 | 20,869 |
| Pinellas Park | 510 | 621 | 653 | 560 | 2,344 |
| St. Pete | 2,728 | 3,007 | 3,109 | 2,809 | 11,653 |
| St. Pete Bch | 110 | 160 | 142 | 120 | 532 |
| Tarpon Springs | 260 | 303 | 257 | 245 | 1,065 |
| Treasure Island | 111 | 213 | 163 | 106 | 593 |
| Other | 858 | 847 | 1,251 | 632 | 3,588 |
| USF Campus PD* | 3 | 2 | 5 | 3 | 13 |
| US Probation | 0 | 1 | 4 | 2 | 7 |
| Total | 12,411 | 12,862 | 12,877 | 11,669 | 49,819 |

Violation of Probation Arrests

VOP Arrests January - December 2011

| | 1st Qtr | | 2nd Qtr | | 3rd Qtr | | 4th Qtr | | Totals | | |
|----------|---------|-------|---------|-------|---------|-------|---------|-------|--------|-------|---------|
| | 2011 | 2010 | 2011 | 2010 | 2011 | 2010 | 2011 | 2010 | 2011 | 2010 | % Chg |
| VOP Only | 769 | 757 | 805 | 778 | 726 | 825 | 672 | 809 | 2,972 | 3,169 | -6.22% |
| All VOP | 1,357 | 1,434 | 1,368 | 1,428 | 1,308 | 1,490 | 1,225 | 1,522 | 5,258 | 5,874 | -10.49% |

On View Ordinance Arrests

On View Ordinance Arrests January - December 2011

| Agency | 1 st Qtr | 2 nd Qtr | 3 rd Qtr | 4 th Qtr | Total YTD |
|---------------------|---------------------|---------------------|---------------------|---------------------|------------|
| Bay Pines VA Police | 0 | 0 | 0 | 0 | 0 |
| Belleair | 0 | 0 | 0 | 0 | 0 |
| Campus Police | 0 | 0 | 0 | 0 | 0 |
| Clearwater | 35 | 45 | 52 | 42 | 174 |
| EPA | 0 | 0 | 0 | 0 | 0 |
| FHP | 0 | 0 | 0 | 0 | 0 |
| Fish & Wildlife | 0 | 0 | 0 | 0 | 0 |
| Marine Patrol | 0 | 0 | 0 | 0 | 0 |
| Gulfport | 5 | 5 | 4 | 2 | 16 |
| Indian Shores | 0 | 0 | 0 | 0 | 0 |
| Kenneth City | 0 | 0 | 0 | 0 | 0 |
| Largo | 0 | 19 | 17 | 8 | 44 |
| PCSO | 4 | 17 | 4 | 12 | 37 |
| Pinellas Park | 51 | 64 | 50 | 31 | 196 |
| St. Petersburg | 53 | 66 | 103 | 67 | 289 |
| St. Pete Bch | 1 | 0 | 0 | 2 | 3 |
| Tarpon Springs | 4 | 4 | 8 | 0 | 16 |
| Treasure Island | 0 | 0 | 0 | 0 | 0 |
| USF Campus Police | 0 | 0 | 0 | 0 | 0 |
| Total | 153 | 220 | 238 | 164 | 775 |

FTA Ordinance Arrests

FTA Arrests January - December 2011

| Agency | 1 st Qtr | 2 nd Qtr | 3 rd Qtr | 4 th Qtr | Total YTD |
|---------------------|---------------------|---------------------|---------------------|---------------------|------------|
| Bay Pines VA Police | 0 | 0 | 0 | 0 | 0 |
| Belleair | 0 | 1 | 0 | 0 | 1 |
| Campus Police | 0 | 0 | 0 | 0 | 0 |
| Clearwater | 17 | 19 | 26 | 12 | 74 |
| EPA | 1 | 0 | 0 | 0 | 1 |
| FHP | 2 | 0 | 0 | 0 | 2 |
| Marine Patrol | 0 | 0 | 0 | 0 | 0 |
| Fish & Wildlife | 0 | 0 | 0 | 0 | 0 |
| Gulfport | 2 | 0 | 1 | 2 | 5 |
| Indian Shores | 1 | 0 | 1 | 0 | 2 |
| Kenneth City | 0 | 1 | 0 | 0 | 1 |
| Largo | 4 | 4 | 8 | 8 | 23 |
| PCSO | 28 | 34 | 31 | 36 | 129 |
| Pinellas Park | 7 | 6 | 10 | 16 | 39 |
| St. Petersburg | 85 | 64 | 63 | 56 | 268 |
| St. Pete Bch | 1 | 0 | 2 | 0 | 3 |
| Tarpon Springs | 1 | 3 | 1 | 4 | 9 |
| Treasure Island | 2 | 2 | 1 | 5 | 10 |
| USF Campus Police | 1 | 0 | 0 | 0 | 1 |
| Total | 152 | 134 | 143 | 139 | 568 |

On View Ordinance Arrests January - December 2010

| Agency | 1 st Qtr | 2 nd Qtr | 3 rd Qtr | 4 th Qtr | Total YTD |
|---------------------|---------------------|---------------------|---------------------|---------------------|------------|
| Bay Pines VA Police | 0 | 0 | 0 | 0 | 0 |
| Belleair | 0 | 0 | 0 | 0 | 0 |
| Campus Police | 0 | 0 | 0 | 0 | 0 |
| Clearwater | 41 | 65 | 59 | 46 | 211 |
| FHP | 0 | 0 | 0 | 0 | 0 |
| Marine Patrol | 0 | 0 | 0 | 0 | 0 |
| Gulfport | 2 | 0 | 1 | 1 | 4 |
| Indian Shores | 0 | 0 | 0 | 0 | 0 |
| Kenneth City | 0 | 0 | 0 | 0 | 0 |
| Largo | 0 | 0 | 2 | 2 | 4 |
| PCSO | 5 | 3 | 5 | 5 | 18 |
| Pinellas Park | 4 | 8 | 38 | 24 | 74 |
| St. Petersburg | 72 | 87 | 218 | 140 | 517 |
| St. Pete Bch | 1 | 0 | 2 | 1 | 4 |
| Tarpon Springs | 4 | 13 | 11 | 11 | 39 |
| Treasure Island | 0 | 0 | 0 | 1 | 1 |
| USF Campus Police | 0 | 0 | 0 | 0 | 0 |
| Total | 129 | 176 | 336 | 231 | 872 |

FTA Ordinance Arrests January - December 2010

| Agency | 1 st Qtr | 2 nd Qtr | 3 rd Qtr | 4 th Qtr | Total YTD |
|---------------------|---------------------|---------------------|---------------------|---------------------|------------|
| Bay Pines VA Police | 0 | 0 | 0 | 0 | 0 |
| Belleair | 0 | 0 | 0 | 1 | 1 |
| Campus Police | 0 | 1 | 0 | 0 | 1 |
| Clearwater | 22 | 26 | 30 | 23 | 101 |
| FHP | 2 | 0 | 1 | 1 | 4 |
| Marine Patrol | 0 | 0 | 0 | 0 | 0 |
| Gulfport | 5 | 0 | 2 | 1 | 8 |
| Fish & Wildlife | 0 | 0 | 0 | 2 | 2 |
| Indian Shores | 0 | 0 | 1 | 1 | 2 |
| Kenneth City | 0 | 1 | 2 | 0 | 3 |
| Largo | 6 | 7 | 7 | 5 | 25 |
| PCSO | 30 | 41 | 40 | 42 | 153 |
| Pinellas Park | 16 | 17 | 9 | 13 | 55 |
| St. Petersburg | 88 | 84 | 94 | 91 | 357 |
| St. Pete Bch | 1 | 2 | 1 | 4 | 8 |
| Tarpon Springs | 3 | 6 | 2 | 3 | 14 |
| Treasure Island | 1 | 6 | 4 | 4 | 15 |
| USF Campus Police | 0 | 0 | 3 | 0 | 3 |
| Total | 174 | 191 | 196 | 191 | 752 |

Disorderly Intox/Marchman

| | 1st Quarter 2011 | 2nd Quarter 2011 | 3rd Quarter 2011 | 4th Quarter 2011 | Total YTD |
|----------------------------|------------------------|------------------------|------------------------|------------------------|--------------|
| Number of Disorderly Intox | 313 | 245 | 265 | 215 | 1,038 |
| Number of Marchman | 425 | 512 | 510 | 427 | 1,874 |

Alternative Sentencing

| | 1st Quarter 2011 | 2nd Quarter 2011 | 3rd Quarter 2011 | 4th Quarter 2011 |
|---------------------------|------------------------|------------------------|------------------------|------------------------|
| Electronic Monitoring | | 171 | 138 | 153 |
| Day Reporting | | 159 | 167 | 135 |
| Total Average Daily Count | | 330 | 305 | 288 |

Misdemeanor Probation March 2012

Number of Offenders Being Supervised: 2859

Number of New Clients: 443

Jail Diversion: March 2012

42 new clients

1 Felony ITP

8 Misdemeanor ITP

Veterans in Jail

Veterans at Pinellas County Jail

May 2011 - March 2012 - 1307 - total arrests 1736

| | VETERANS | ARRESTS |
|----------------------|----------|---------|
| AIRFORCE: | 117 | 146 |
| AIFORCE RESERVES: | 1 | 1 |
| ARMY: | 635 | 836 |
| ARMY NATIONAL GUARD: | 2 | 2 |
| ARMY RESERVE: | 1 | 3 |
| COAST GUARD: | 25 | 27 |
| MARINES: | 223 | 286 |
| NATIONAL GUARD: | 25 | 48 |
| NAVY: | 278 | 387 |



Sex Offenders

Source: FDLE

CATEGORY



Offenders



Predators



Multiple Offenders

PROPERTY CRIMES

ALARM



Alarm

ARSON



Arson

ASSAULT



Assault

BATTERY



Simple Battery



Aggravated Battery



Sexual Battery

BURGLARY



Burglary Business



Burglary Residence



Burglary Structure



Burglary Vehicle

DRUG



Drug

HOMICIDE



Homicide

KIDNAPPING



Kidnapping

MISSING PERSON



Missing Person

ROBBERY



Armed Robbery



Carjacking



Home Invasion



Unarmed Robbery

THEFT



Stolen Vehicle Recovered



Stolen Vehicle



Grand Theft



Petit Theft



Purse Snatch



Shoplifting

TRAFFIC



Traffic Accident

TRESPASS



Trespass

VANDALISM



Vandalism

WEAPON



Weapon

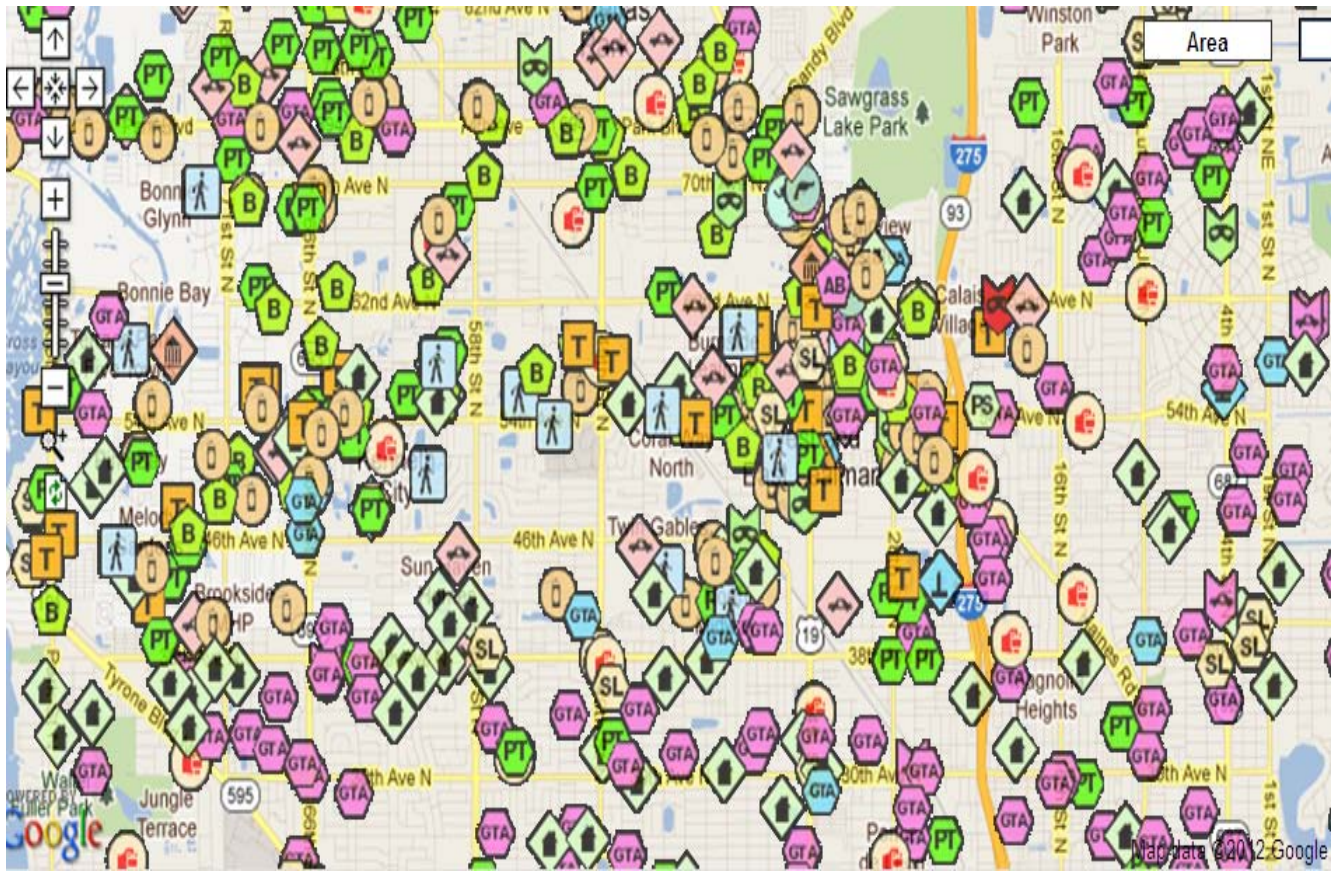
OTHER



Other

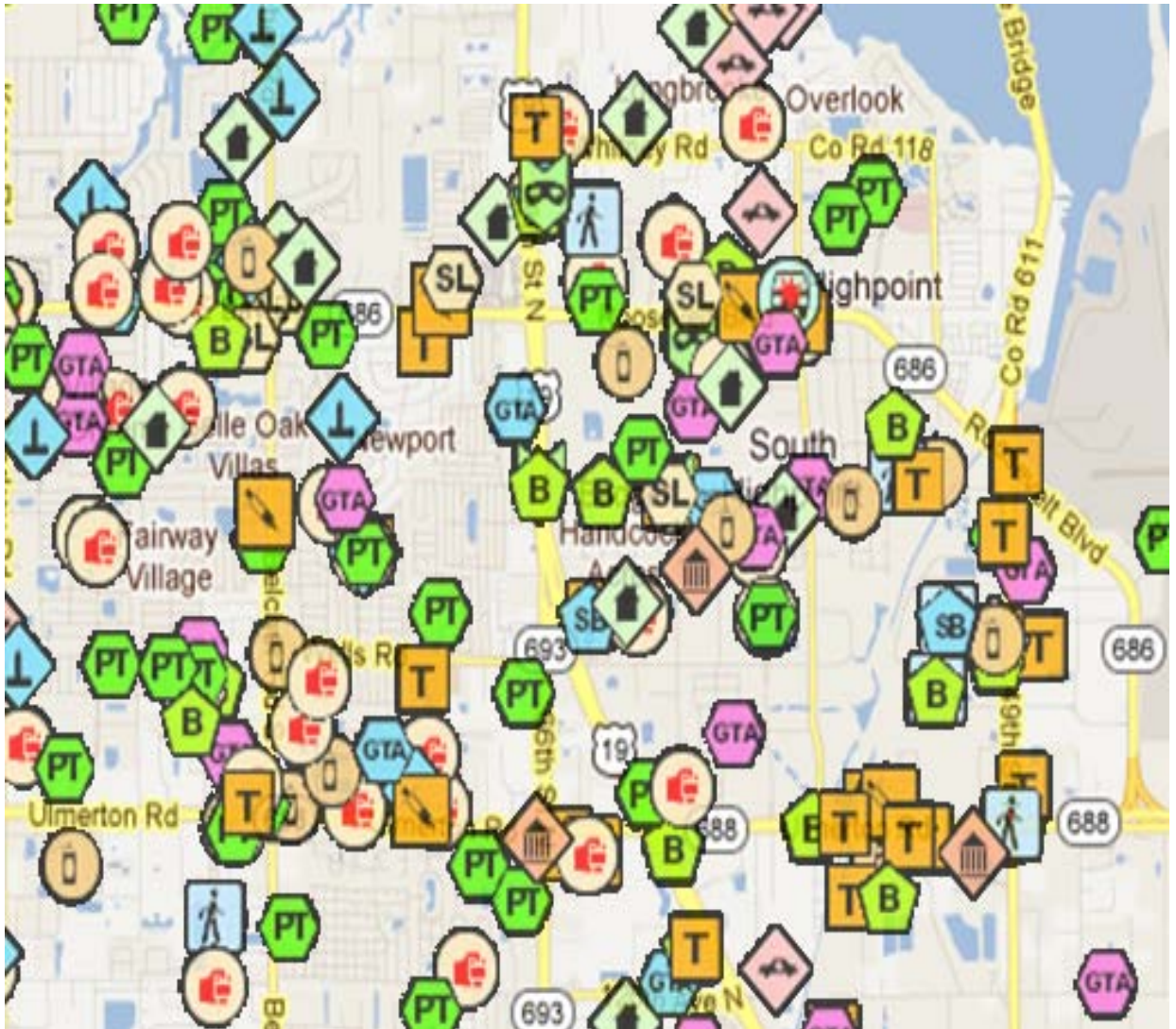
Lealman Corridor

March 1, 2012



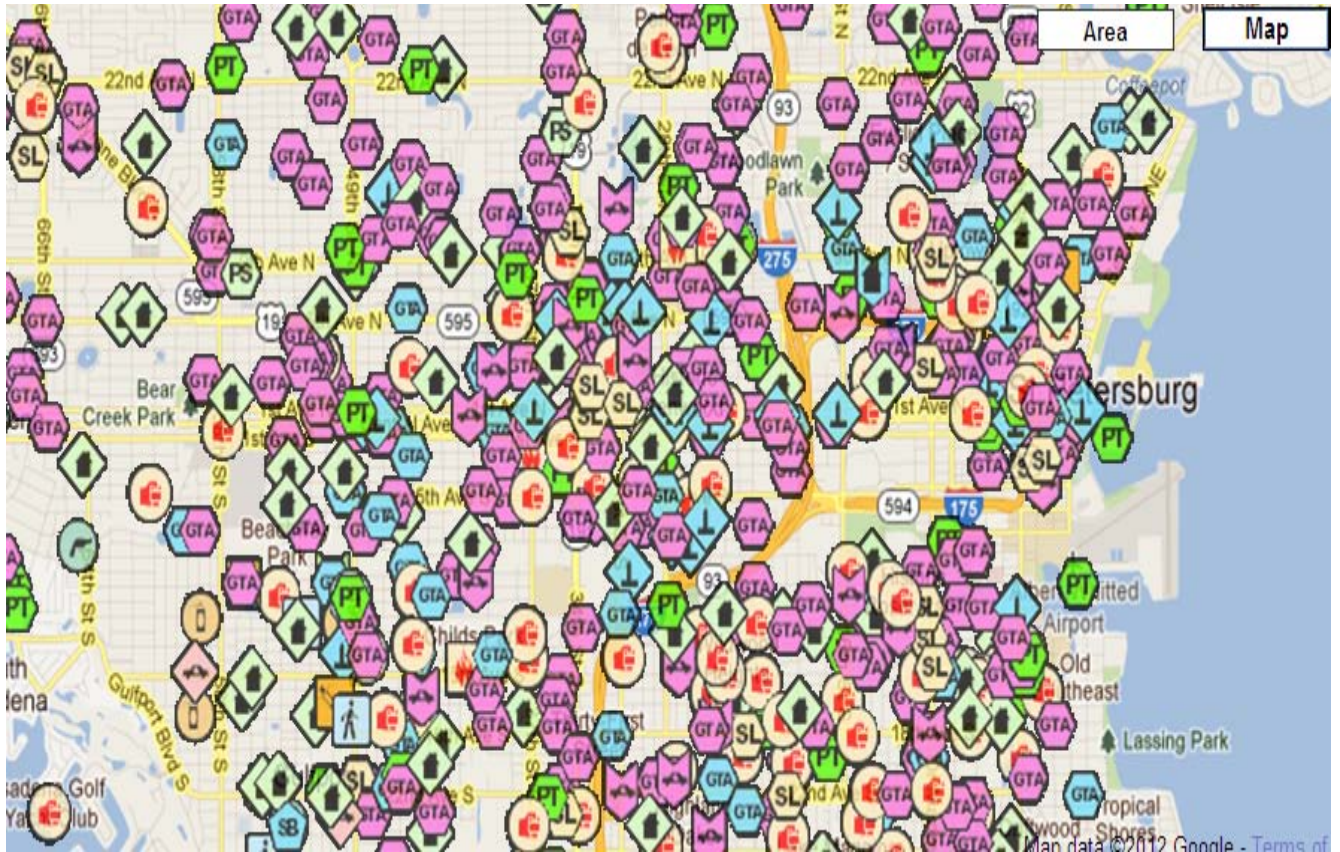
Highpoint

March 1 - 31, 2012



South St. Petersburg

March 1 - 31, 2012



Point C

Pinellas Safe Harbor



14840 49th St. N., Clearwater

Pinellas Safe Harbor is a homeless shelter designed to be a safe haven for those currently homeless and who require services to get back on their feet.

Participating agencies provide a variety of services:

- PERC (Pinellas Ex-Offender Re-Entry Coalition) – case management, life skills classes and re-entry services
- PAR, WestCare, Suncoast – Treatment services
- STARS/Strive Program – Employment readiness
- AA – 12 step meetings
- Literacy Council of St. Pete – Literacy tutoring
- Public Defender's Office Homeless Outreach – Services to have local ordinance violations dismissed
- PC Social Workers – Initial assessment/intake

Homeless Encampments Encountered by the Pinellas County Code Enforcement Division and the Pinellas County Sheriff's Office



Homeless Encampments



Homeless Encampments



Homeless Encampments





Profession: **Osteopathic Physician**
 Year Began Practicing: **Not Provided**
 Expiration Date: **3/31/2012**
 Status: **CLEAR/ACTIVE**

General Information Education and Training Academic Appointments Specialty Certification Financial Responsibility Proceedings and Actions Optional Information License Verification

Information in this profile has been verified by the practitioner.

Primary Practice Address

DAVID J. SASSANO
 36472 US HWY 19 N
 PALM HARBOR, FL 34682
 UNITED STATES

Medicaid

This practitioner does **not** participate in the Medicaid program.

Staff Privileges

This practitioner currently holds staff privileges at the following hospital/medical/health institutions:

| | |
|------------------|------------------------------|
| Institution Name | DOCTORS HOSPITAL OF SARASOTA |
| City | SARASOTA |
| State | FLORIDA |

E-Mail Address

Please contact at: dsassano5@verizon.net



Whitney Enterprises Sign Warning



ZONING NOTICE OF VIOLATION PINELLAS COUNTY CODE LAND DEVELOPMENT CODE

CASE #: CC10-02588

DATE: 8/24/10

BUSINESS NAME/ADDRESS

WHITNEY, LANCE

34911 US HIGHWAY 19 N SUITE 512 PALM HARBOR FL 34684

SIGNATOR: NONE

REC'D BY: HAND-DELIVERED

VIOLATION PROPERTY

Parcel ID# S 31/27/16/38967/000/0010

Address: 34911 US HIGHWAY 19 N PALM HARBOR, FL 34684

It has been brought to our attention, and confirmed by a field inspection conducted by this Department, that we have just and reasonable grounds to believe that there is a violation of the Pinellas County Land Development Code, as shown below:

Section 138-1334, (d), PROHIBITED SIGNS:

- (Y) 3. Off premises sign.
- (N) 5. Pennants, streamers, banners, cold air inflatable.
- (Y) 6. Portable sign (not permitted and permanently attached to ground/structure).
- (Y) 8. Sandwich board sign.
- (Y) 11. Sign erected over public right-of-way.
- (N) 14. Any sign that moves, revolves, twirls, rotates, or flashes, including animated signs.
- (Y) 16. Snipe sign (attached to any tree, pole, stake, wall or fence).
- (N) 18. Vehicle Signs as defined and portable trailer signs.
- (Y) 19. Any sign that is not specifically described or enumerated as permitted by this ordinance.
- (N) OTHER.

THE SIGN(S) DISPLAY THE FOLLOWING:

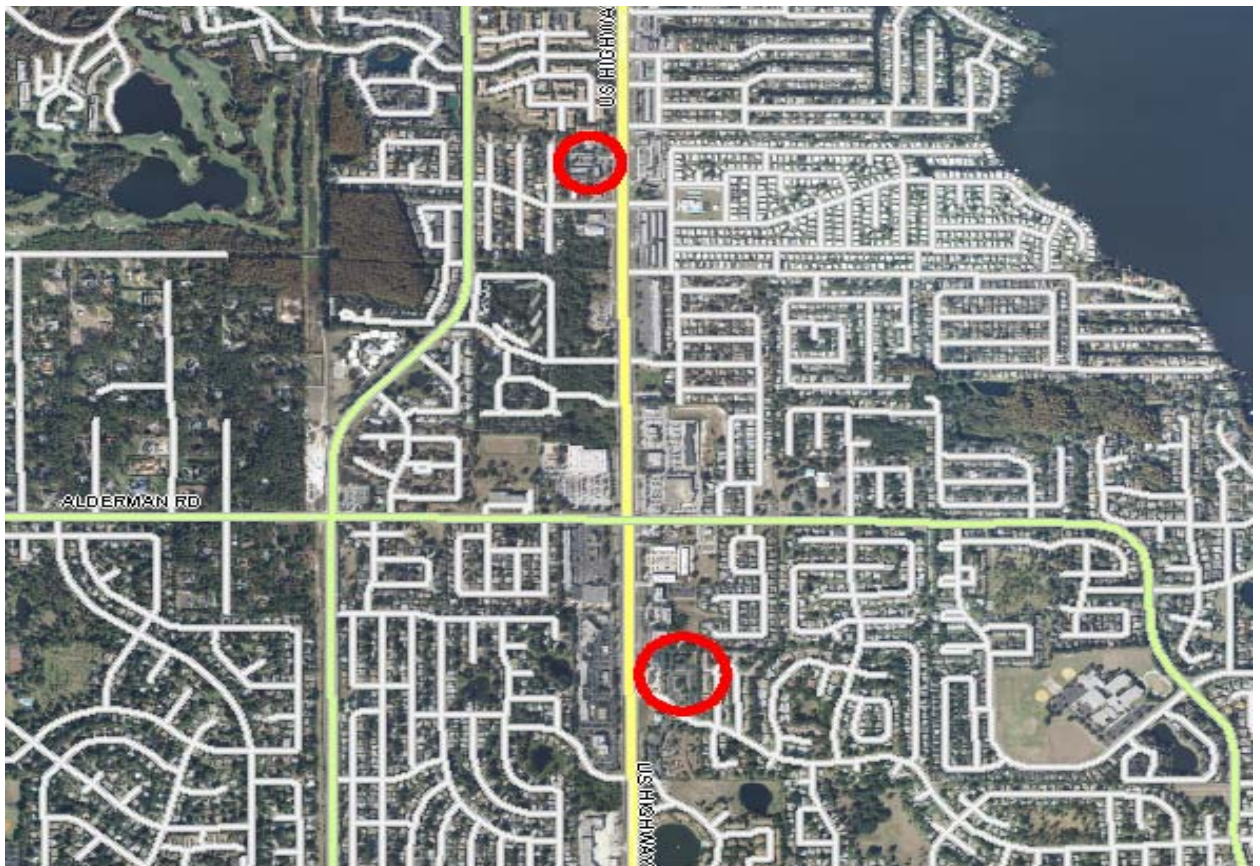
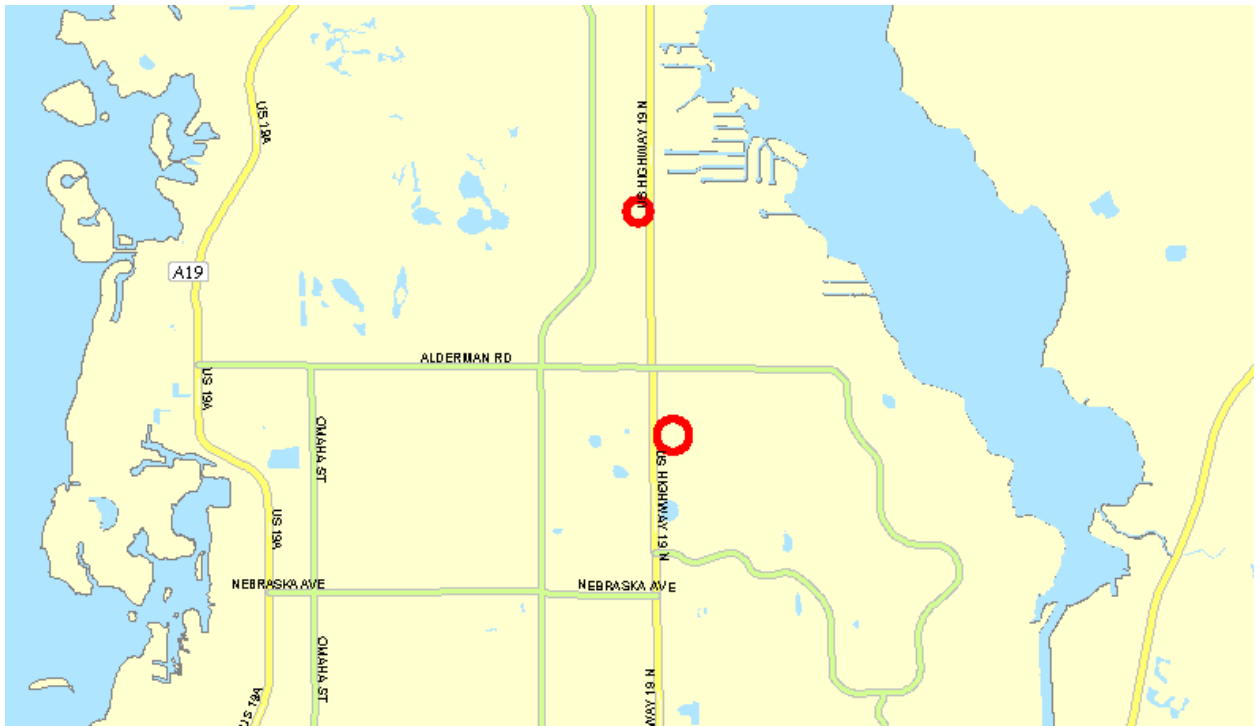
PAIN MANAGEMENT

(Y) PLEASE NOTE: If this is check marked, the sign appears to have been placed on public right-of-way and must be removed. The sign would constitute a continuing violation even if removed from the right-of-way and placed on private property as a permit would not be able to be obtained with the sign in its present form.

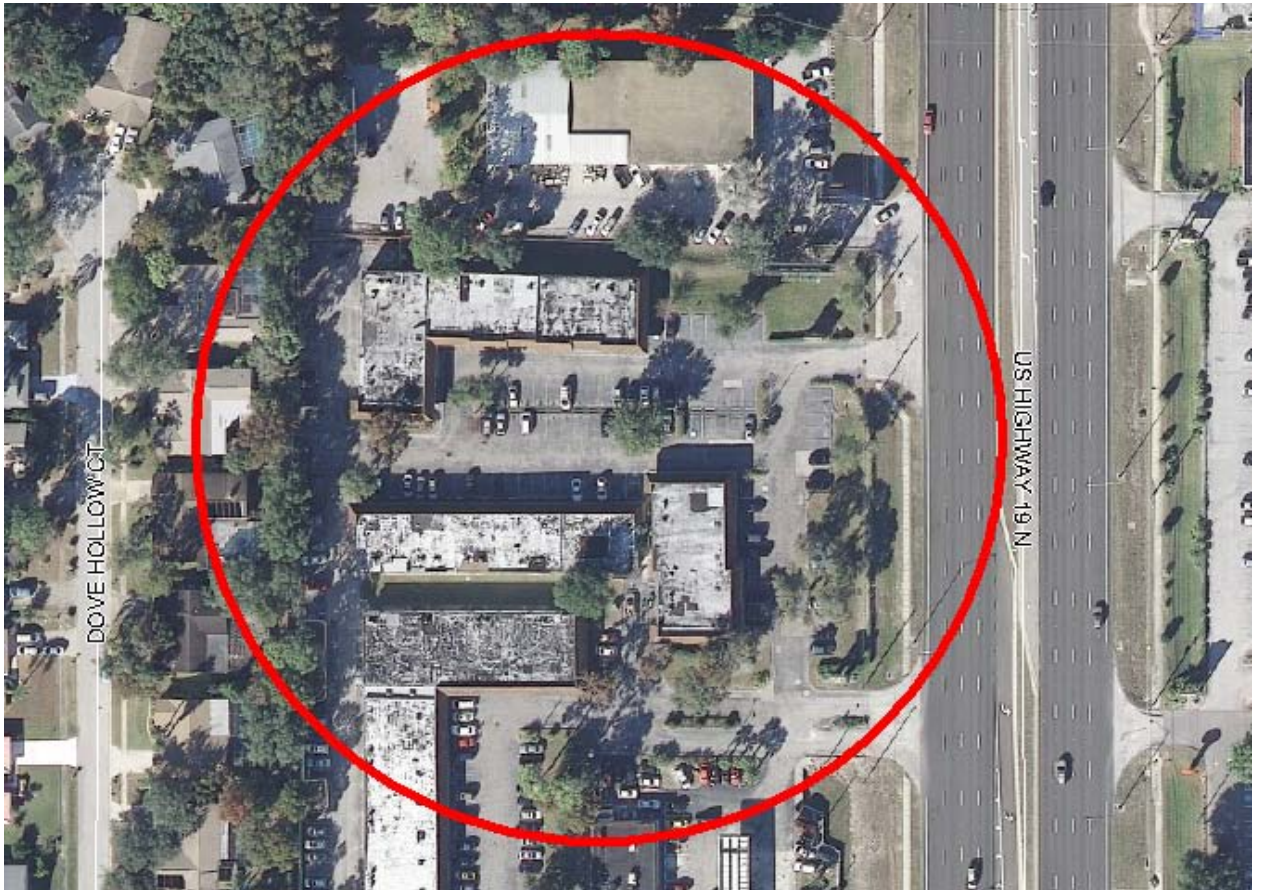
TO CORRECT THIS VIOLATION it will be necessary to: (Y) remove the sign from the property, and/or (N) obtain permit and reconstruct the sign to comply with the ordinance. We ask your cooperation in correcting this violation prior to 08/28/10. Another inspection will occur after that date to verify compliance. Failure to comply may result in a citation for a fine in County Court and/or notice for hearing before the Special Magistrate. The Special Magistrate has the authority to impose fines of up to \$1000.00 for each day the violation continues. If the violation is corrected and then repeated, or if the violation is not corrected by the above specified time, the case may be brought for hearing even if the violation is corrected prior to hearing. Subsequent violations of this same section of the Code may result in immediate imposition of fines without additional notice.

Please help us keep your neighborhood the best it can be. If you have any questions or don't understand this notice please contact me before 9 A.M. or after 2 P.M. at 464-3107. If I am not available, you may leave a message on my VOICEMAIL and I will return your call as soon as possible.

Initial Pain Clinic sites for Phoenix and Whitney Enterprises
Both sites are now closed



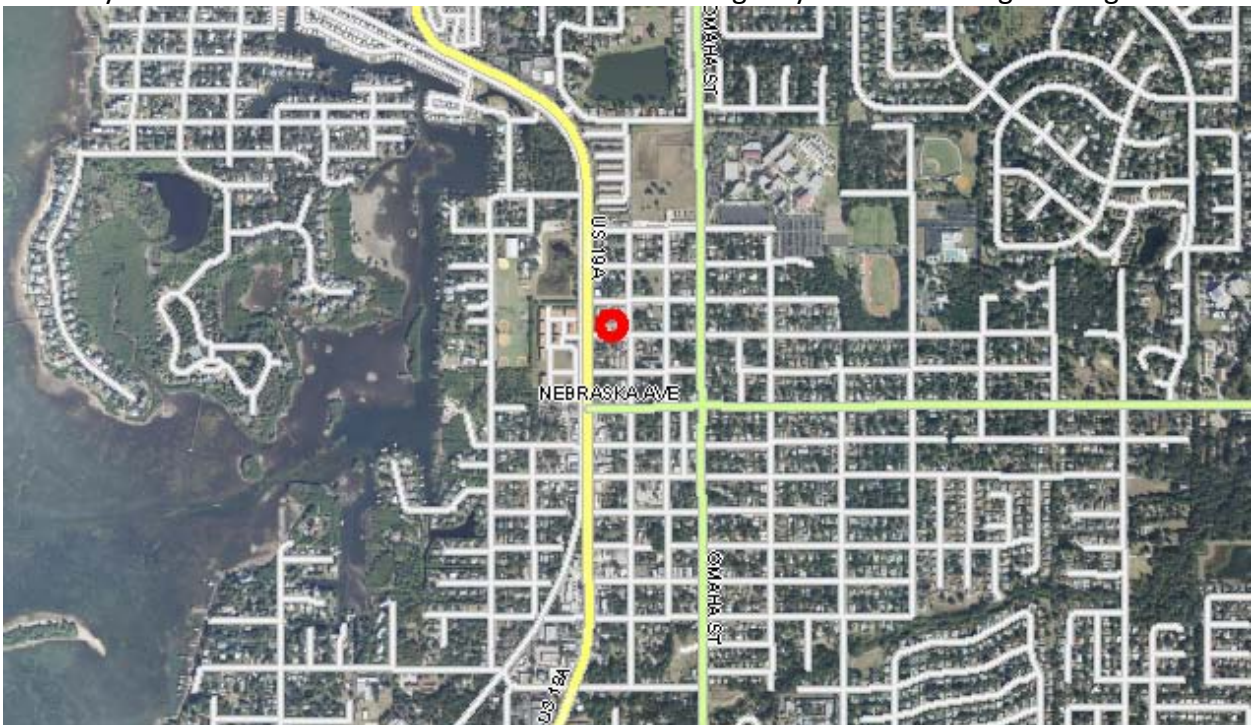
Phoenix Location



Whitney Enterprises' Initial Location



Whitney moved to Alternate 19 until closed under emergency order following investigations



Point E
Agency for Community Treatment Service (ACTS)



3575 Old Keystone Rd., Tarpon Springs

This is a residential program for male and female adults with mental health and substance abuse disorders. The property and facility belong to Pinellas County.

Point F
Citizens Alliance for Progress
Union Academy Neighborhood Family Center



401 E. Martin Luther King Dr., Tarpon Springs

Point H

Homeless Encampment Complaint on County-Owned Property

