

Healthy Communities Tour Packet

Monday, May 7, 2012

South County

Monday, May 14, 2012

North County

The purpose of the tours is to gain a snapshot view of the condition of the natural and built environment of neighborhoods in distress and explore the challenges of

.....

- Housing, infrastructure, education, homelessness
- Public safety, recidivism, and victimization
- Access to health and substance abuse assistance
- Economic development and job creation
- Changeable regulatory environment and mandates

Healthy Communities Tours

Mondays, May 7 and 14th, 2012

TABLE OF CONTENTS

	<u>Page</u>
SOUTH COUNTY	
Point B - Pinellas County Health Department – St. Petersburg Center	3
Pont C - Pinellas County Job Corp Center	3
Point D - Johnnie Ruth Clark Health Center	4
Point E - Sweetbay Supermarket	4
Point F - Perkins Elementary Center for the Arts & International Studies	5
Point G - James B. Sanderlin Elementary School	5
Point H - Lakeview Fundamental Elementary School	6
Point I - Academy Prep School	6
Point J - Sanderlin Neighborhood Family Center	7
Point K - Doug Jamerson Elementary School	7
Point L - Head Start Child Development & Family Center	8
Point M - Fairmount Park Elementary School	8
Point N - Childs Park YMCA	9
Point O - FL Dept. of Corrections Work Release Center	9
Point P - HOWCO Oil Recovery	10
Point Q - Childs Park Recreation Center	10
Point T - Lealman and Asian Neighborhood Family Center	11
Other Point of Interest in Central Lealman	12
Point Y - Pinellas County Health Department – Mid-County Center	13
NORTH COUNTY	
Point C - Pinellas County Jail	14
Pinellas Public Safety Coordinating Council Indicators Report	15-21
Legend - Pinellas County Crime Viewer	22
Crime Map for Lealman Corridor	23
Crime Map for High Point	24
Crime Map for South St. Petersburg	25
Point C - Pinellas Safe Harbor	26
Homeless Encampments Encountered by Pinellas County Code Enforcement and the Pinellas County Sheriff's Office	27-30
Point E - Agency for Community Treatment Service (ACTS)	31
Point F - Citizens Alliance for Progress – Union Academy Neighborhood Family Center	31

Point B
Pinellas County Health Department
St. Petersburg Center



205 M.L. King Street N., St. Petersburg

Point C
Pinellas County Job Corp Center



500 22nd St S., St. Petersburg

Point D
Johnnie Ruth Clark Health Center



1344 22nd St. S., St. Petersburg

Point E
Sweetbay Supermarket



1794 22nd St. S., St. Petersburg

Point F
**Perkins Elementary Center
for the Arts & International Studies**



2205 18th Ave. S, St. Petersburg

Point G
James B. Sanderlin Elementary IB World School



2350 22nd Ave. S., St. Petersburg

Point H
Lakeview Fundamental Elementary School



2229 25th St. S., St. Petersburg

Point I
Academy Prep School



2301 22nd St. S., St. Petersburg

Point J
Sanderlin Neighborhood Family Center



2335 22nd Ave. S., St. Petersburg

Point K
Doug Jamerson Elementary School



1200 37th St. S., St. Petersburg

Point L
Head Start Child Development & Family Center



3600 Fairfield Ave. S., St. Petersburg

Point M
Fairmount Park Elementary School



575 41st St S., St. Petersburg

Point N
Childs Park YMCA



691 43rd St. S., St. Petersburg

Point O
FL Dept. of Corrections Work Release Center



4237 8th Ave. S., St. Petersburg

Point P

HOWCO Oil Recovery



843 43rd St. S., St. Petersburg

Point Q

Childs Park Recreation Center



4301 13th Ave. S., St. Petersburg

Point T
Lealman and Asian Neighborhood Family Center



4255 56th Ave. N., St. Petersburg

Other Points of Neighborhood Interest



Placement of 2nd Pedestrian Bridge at Joe's Creek Greenway Park in Central Lealman

- ☐ Funds (\$247,500) secured by Parks through annual HUD appropriation
- ☐ Separate from CDBG entitlement funds received by Community Development
- ☐ August 30, 2011 - Bridge delivered to Joe's Creek Park
- ☐ September 30, 2011 – HUD appropriation grant deadline
- ☐ Bridge purchase/delivery preceded design, permitting and stabilization of site due to grant deadline
- ☐ April/May 2012 - Design and permitting completed
- ☐ June 2012 - Advertise and construction process
- ☐ May 2013 – Construction/placement of bridge completed

**Point Y
Pinellas County Health Department
Mid County Center**



8751 Ulmerton Rd., Suite 2000, Largo

Point C Pinellas County Jail



14400 49th St. N., Clearwater

- Located on 54 acres of land in central Pinellas County
- Statutory responsibility of BCC
- By Ordinance, the Sheriff is the Chief Corrections Officer
- In September 2006, after an average daily population spike of 3,762 inmates, the BCC approved a justice system process study to help address crowding concerns.
- In 2011, the jail saw just over 47,000 bookings.
- The March 2012 average daily population was 3,051 with a current jail capacity of 3,271 beds.

Pinellas Public Safety Coordinating Council Indicators Report



April 23, 2012

Pinellas County Jail

Average Daily Inmate Population

Pinellas Average Daily Inmate Population								
	<u>2005</u>	<u>2006</u>	<u>2007</u>	<u>2008</u>	<u>2009</u>	<u>2010</u>	<u>2011</u>	<u>2012</u>
					2981	3172	3045	3084
January	3080	3422	3671	3637	2974	3126	3020	3083
February	3147	3477	3698	3529	3009	3128	2926	3051
March	3160	3585	3616	3412				
April	3206	3536	3545	3551	3132	3163	2975	
May	3274	3650	3547	3596	3193	3151	3020	
June	3363	3687	3546	3501	3248	3194	3077	
July	3352	3673	3536	3355	3234	3253	3077	
August	3354	3705	3539	3336	3288	3242	3112	
September	3399	3762	3613	3267	3400	3245	3240	
October	3488	3736	3600	3202	3375	3197	3256	
November	3548	3674	3610	3112	3307	3120	3178	
December	3428	3552	3582	2924	3157	3050	3082	

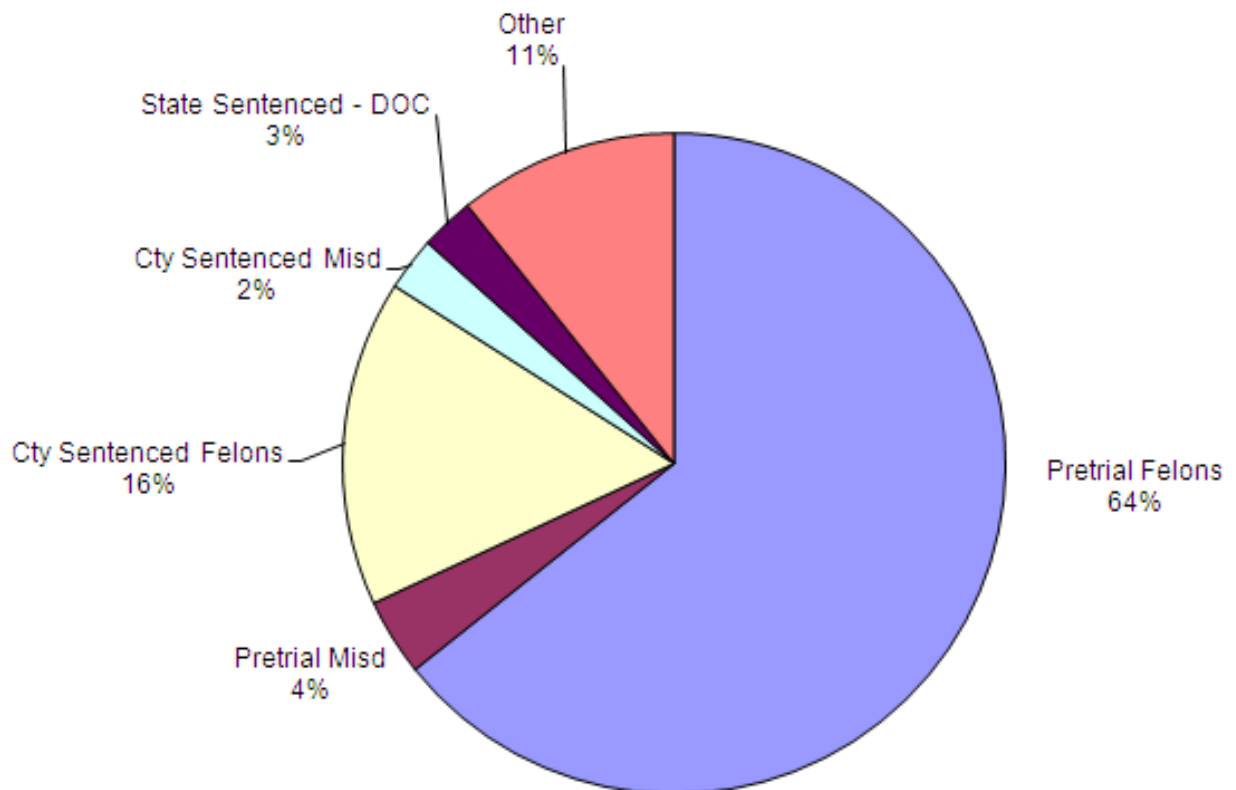
Pinellas Percentage Change by Month								
	<u>2005</u>	<u>2006</u>	<u>2007</u>	<u>2008</u>	<u>2009</u>	<u>2010</u>	<u>2011</u>	<u>2012</u>
January		-0.2%	3.4%	1.5%	1.9%	-0.5%	-0.2%	0.1%
February	2.2%	1.6%	0.7%	-3.0%	-0.2%	-1.5%	-0.8%	0.0%
March	0.4%	3.1%	-2.2%	-3.3%	1.2%	0.1%	-3.1%	-1.0%
April	1.5%	-1.4%	-2.0%	4.1%	4.1%	1.2%	1.7%	
May	2.1%	3.2%	0.1%	1.3%	1.9%	-0.4%	1.5%	
June	2.7%	1.0%	0.0%	-2.6%	1.7%	1.3%	1.9%	
July	-0.3%	-0.4%	-0.3%	-4.2%	-0.4%	1.8%	0.0%	
August	0.1%	0.9%	0.1%	-0.6%	1.7%	-0.3%	1.1%	
September	1.3%	1.5%	2.1%	-2.1%	3.4%	0.4%	4.1%	
October	2.6%	-0.7%	-0.4%	-2.0%	-0.7%	-1.8%	0.5%	
November	1.7%	-1.7%	0.3%	-2.8%	-2.0%	-2.4%	-2.4%	
December	-3.4%	-3.3%	-0.8%	-6.0%	-4.5%	-2.2%	-3.0%	

3 Month Jail Population Breakdown

	Jan-12	Feb-12	Mar-12
Pretrial Felons	1947	1933	1962
Pretrial Misd	129	124	115
Cty Sentenced Felons	478	497	486
Cty Sentenced Misd	72	79	80
State Sentenced - DOC	102	99	80
Other	356	351	328
Ave Daily Population	3084	3083	3051

DETENTION AND CORRECTIONS BUREAU Percentages of Average Daily Inmate Population

March 2012

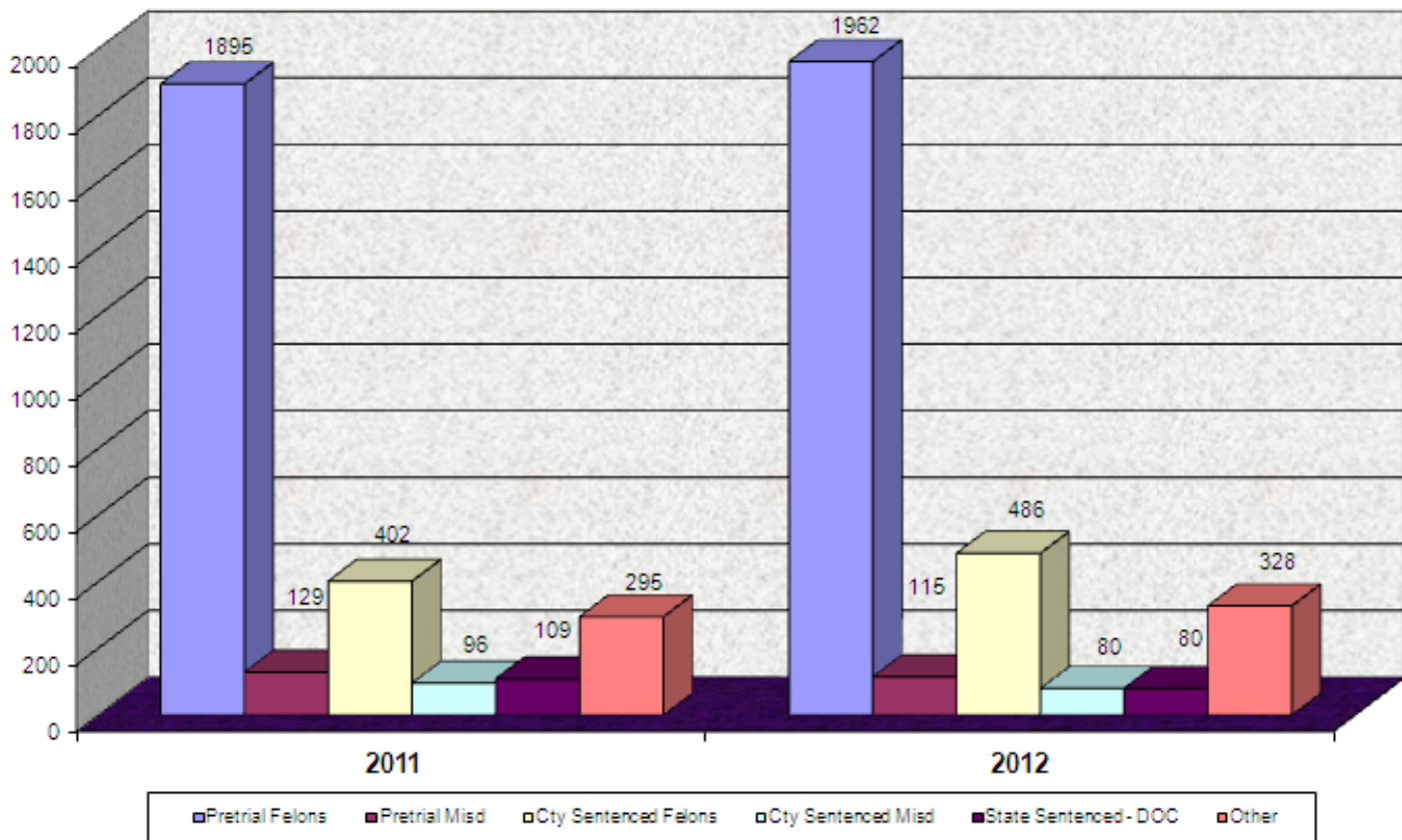


March 2011 and March 2012 ADP Comparison by Category

DETENTION AND CORRECTIONS BUREAU
Average Daily Inmate Population

ADP 2926

ADP 3051



Arrests by Agency

Arrests by Agency January - December 2011

Agency	1 st Qtr	2 nd Qtr	3 rd Qtr	4 th Qtr	Total YTD
Bay Pines Police	1	18	5	10	34
Belleair	7	4	8	11	30
Campus Police	3	3	1	2	9
Clearwater	1,126	1,023	1,170	965	4,284
DOC Probation	36	43	55	42	176
EPA	1	1	10	2	14
FDLE	1	1	0	0	2
FHP	75	89	69	65	298
Fish & Wildlife	9	11	13	8	41
Marine Patrol	0	0	0	0	0
Gulfport	75	81	103	85	344
Indian Shores	39	31	36	35	141
Kenneth City	45	43	39	49	176
Largo	819	870	888	736	3,313
PCSO	5,194	5,422	5,211	4,879	20,706
Pinellas Park	625	658	615	597	2,495
St. Pete	2,611	2,722	2,840	2,483	10,656
St. Pete Bch	121	134	112	103	470
Tarpon Springs	182	181	227	188	778
Treasure Island	134	237	135	117	623
Other	684	717	722	641	2,764
USF Campus PD*	2	3	1	4	10
US Probation	2	0	6	4	12
Total	11,792	12,292	12,266	11,026	47,376

Arrests by Agency January - December 2010

Agency	1 st Qtr	2 nd Qtr	3 rd Qtr	4 th Qtr	Total YTD
Bay Pines Police	15	9	10	6	40
Belleair	0	7	5	4	16
Campus Police	1	1	1	1	4
Clearwater	1,366	1,396	1,303	1,115	5,180
DOC Probation	0	3	42	50	95
EPA	0	1	3	2	6
FDLE	0	0	1	0	1
FHP	50	49	51	73	223
Fish & Wildlife	0	0	0	1	1
Marine Patrol	0	0	1	0	1
Gulfport	91	112	92	86	381
Indian Shores	26	41	31	24	122
Kenneth City	46	65	54	54	219
Largo	823	841	344	859	2,867
PCSO	5,413	5,183	5,356	4,917	20,869
Pinellas Park	510	621	653	560	2,344
St. Pete	2,728	3,007	3,109	2,809	11,653
St. Pete Bch	110	160	142	120	532
Tarpon Springs	260	303	257	245	1,065
Treasure Island	111	213	163	106	593
Other	858	847	1,251	632	3,588
USF Campus PD*	3	2	5	3	13
US Probation	0	1	4	2	7
Total	12,411	12,862	12,877	11,669	49,819

Violation of Probation Arrests

VOP Arrests January - December 2011

	1st Qtr		2nd Qtr		3rd Qtr		4th Qtr		Totals		
	2011	2010	2011	2010	2011	2010	2011	2010	2011	2010	% Chg
VOP Only	769	757	805	778	726	825	672	809	2,972	3,169	-6.22%
All VOP	1,357	1,434	1,368	1,428	1,308	1,490	1,225	1,522	5,258	5,874	-10.49%

On View Ordinance Arrests

On View Ordinance Arrests January - December 2011

Agency	1 st Qtr	2 nd Qtr	3 rd Qtr	4 th Qtr	Total YTD
Bay Pines VA Police	0	0	0	0	0
Belleair	0	0	0	0	0
Campus Police	0	0	0	0	0
Clearwater	35	45	52	42	174
EPA	0	0	0	0	0
FHP	0	0	0	0	0
Fish & Wildlife	0	0	0	0	0
Marine Patrol	0	0	0	0	0
Gulfport	5	5	4	2	16
Indian Shores	0	0	0	0	0
Kenneth City	0	0	0	0	0
Largo	0	19	17	8	44
PCSO	4	17	4	12	37
Pinellas Park	51	64	50	31	196
St. Petersburg	53	66	103	67	289
St. Pete Bch	1	0	0	2	3
Tarpon Springs	4	4	8	0	16
Treasure Island	0	0	0	0	0
USF Campus Police	0	0	0	0	0
Total	153	220	238	164	775

FTA Ordinance Arrests

FTA Arrests January - December 2011

Agency	1 st Qtr	2 nd Qtr	3 rd Qtr	4 th Qtr	Total YTD
Bay Pines VA Police	0	0	0	0	0
Belleair	0	1	0	0	1
Campus Police	0	0	0	0	0
Clearwater	17	19	26	12	74
EPA	1	0	0	0	1
FHP	2	0	0	0	2
Marine Patrol	0	0	0	0	0
Fish & Wildlife	0	0	0	0	0
Gulfport	2	0	1	2	5
Indian Shores	1	0	1	0	2
Kenneth City	0	1	0	0	1
Largo	4	4	8	8	23
PCSO	28	34	31	36	129
Pinellas Park	7	6	10	16	39
St. Petersburg	85	64	63	56	268
St. Pete Bch	1	0	2	0	3
Tarpon Springs	1	3	1	4	9
Treasure Island	2	2	1	5	10
USF Campus Police	1	0	0	0	1
Total	152	134	143	139	568

On View Ordinance Arrests January - December 2010

Agency	1 st Qtr	2 nd Qtr	3 rd Qtr	4 th Qtr	Total YTD
Bay Pines VA Police	0	0	0	0	0
Belleair	0	0	0	0	0
Campus Police	0	0	0	0	0
Clearwater	41	65	59	46	211
FHP	0	0	0	0	0
Marine Patrol	0	0	0	0	0
Gulfport	2	0	1	1	4
Indian Shores	0	0	0	0	0
Kenneth City	0	0	0	0	0
Largo	0	0	2	2	4
PCSO	5	3	5	5	18
Pinellas Park	4	8	38	24	74
St. Petersburg	72	87	218	140	517
St. Pete Bch	1	0	2	1	4
Tarpon Springs	4	13	11	11	39
Treasure Island	0	0	0	1	1
USF Campus Police	0	0	0	0	0
Total	129	176	336	231	872

FTA Ordinance Arrests January - December 2010

Agency	1 st Qtr	2 nd Qtr	3 rd Qtr	4 th Qtr	Total YTD
Bay Pines VA Police	0	0	0	0	0
Belleair	0	0	0	1	1
Campus Police	0	1	0	0	1
Clearwater	22	26	30	23	101
FHP	2	0	1	1	4
Marine Patrol	0	0	0	0	0
Gulfport	5	0	2	1	8
Fish & Wildlife	0	0	0	2	2
Indian Shores	0	0	1	1	2
Kenneth City	0	1	2	0	3
Largo	6	7	7	5	25
PCSO	30	41	40	42	153
Pinellas Park	16	17	9	13	55
St. Petersburg	88	84	94	91	357
St. Pete Bch	1	2	1	4	8
Tarpon Springs	3	6	2	3	14
Treasure Island	1	6	4	4	15
USF Campus Police	0	0	3	0	3
Total	174	191	196	191	752

Disorderly Intox/Marchman

	1st Quarter 2011	2nd Quarter 2011	3rd Quarter 2011	4th Quarter 2011	Total YTD
Number of Disorderly Intox	313	245	265	215	1,038
Number of Marchman	425	512	510	427	1,874

Alternative Sentencing

	1st Quarter 2011	2nd Quarter 2011	3rd Quarter 2011	4th Quarter 2011
Electronic Monitoring		171	138	153
Day Reporting		159	167	135
Total Average Daily Count		330	305	288

Misdemeanor Probation March 2012

Number of Offenders Being Supervised: 2859

Number of New Clients: 443

Jail Diversion: March 2012

42 new clients

1 Felony ITP

8 Misdemeanor ITP

Veterans in Jail

Veterans at Pinellas County Jail

May 2011 - March 2012 - 1307 - total arrests 1736

	VETERANS	ARRESTS
AIRFORCE:	117	146
AIFORCE RESERVES:	1	1
ARMY:	635	836
ARMY NATIONAL GUARD:	2	2
ARMY RESERVE:	1	3
COAST GUARD:	25	27
MARINES:	223	286
NATIONAL GUARD:	25	48
NAVY:	278	387



Sex Offenders

Source: FDLE

CATEGORY



Offenders



Predators



Multiple Offenders

PROPERTY CRIMES

ALARM



Alarm

ARSON



Arson

ASSAULT



Assault

BATTERY



Simple Battery



Aggravated Battery



Sexual Battery

BURGLARY



Burglary Business



Burglary Residence



Burglary Structure



Burglary Vehicle

DRUG



Drug

HOMICIDE



Homicide

KIDNAPPING



Kidnapping

MISSING PERSON



Missing Person

ROBBERY



Armed Robbery



Carjacking



Home Invasion



Unarmed Robbery

THEFT



Stolen Vehicle Recovered



Stolen Vehicle



Grand Theft



Petit Theft



Purse Snatch



Shoplifting

TRAFFIC



Traffic Accident

TRESPASS



Trespass

VANDALISM



Vandalism

WEAPON



Weapon

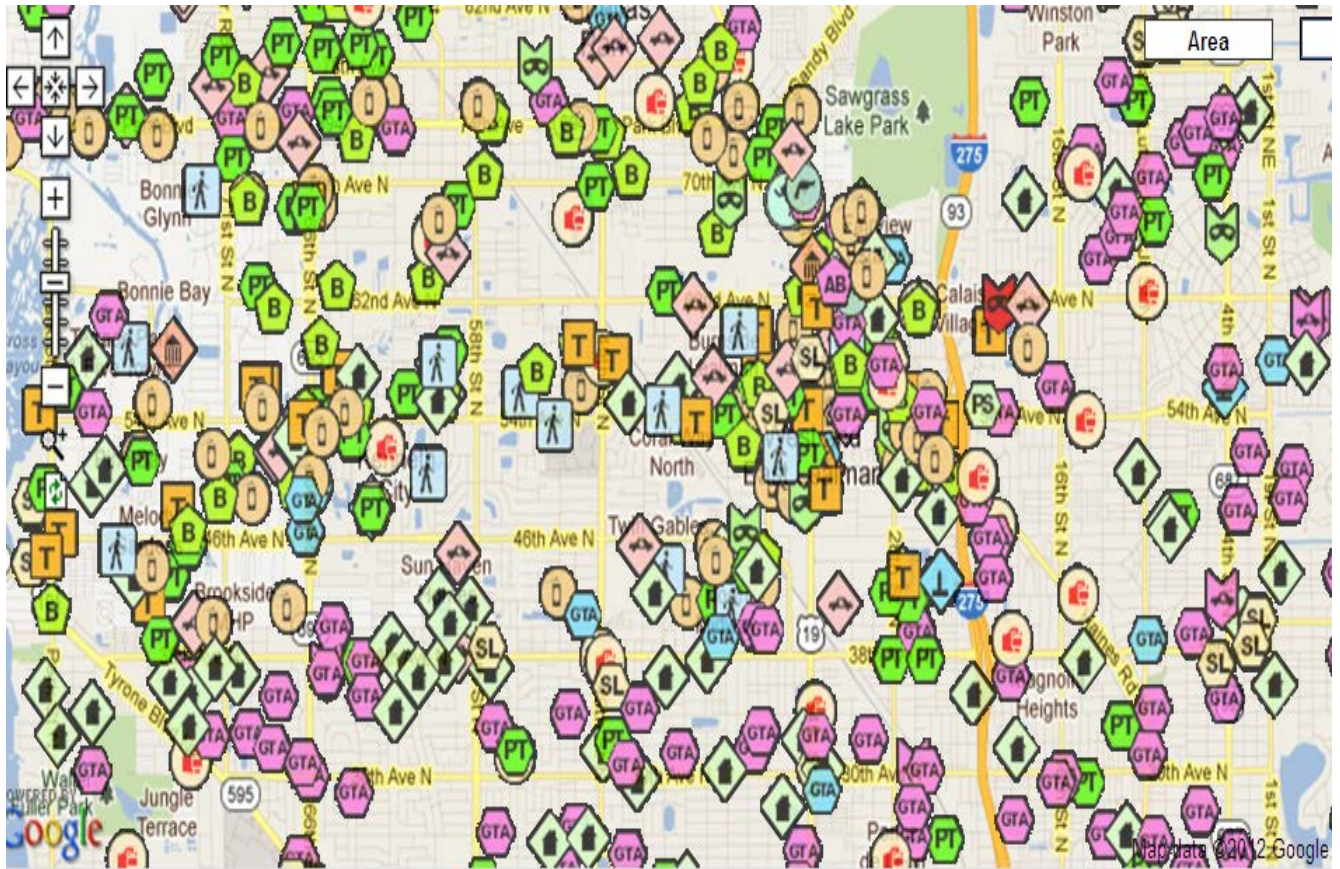
OTHER



Other

Lealman Corridor

March 1, 2012



Highpoint

March 1 - 31, 2012



Point C

Pinellas Safe Harbor



14840 49th St. N., Clearwater

Pinellas Safe Harbor is a homeless shelter designed to be a safe haven for those currently homeless and who require services to get back on their feet.

Participating agencies provide a variety of services:

- PERC (Pinellas Ex-Offender Re-Entry Coalition) – case management, life skills classes and re-entry services
- PAR, WestCare, Suncoast – Treatment services
- STARS/Strive Program – Employment readiness
- AA – 12 step meetings
- Literacy Council of St. Pete – Literacy tutoring
- Public Defender's Office Homeless Outreach – Services to have local ordinance violations dismissed
- PC Social Workers – Initial assessment/intake

Homeless Encampments Encountered by the Pinellas County Code Enforcement Division and the Pinellas County Sheriff's Office



Homeless Encampments



Homeless Encampments



Homeless Encampments



Point E
Agency for Community Treatment Service (ACTS)



3575 Old Keystone Rd., Tarpon Springs

This is a residential program for male and female adults with mental health and substance abuse disorders. The property and facility belong to Pinellas County.

Point F
Citizens Alliance for Progress
Union Academy Neighborhood Family Center



401 E. Martin Luther King Dr., Tarpon Springs