

4. REPORTS TO BE RECEIVED FOR FILING:

- a. Pinellas County Sheriff's Office Special-Purpose Financial Statements, September 30, 2013, with summarized financial information for the year ended September 30, 2012.
- b. City of Oldsmar Community Redevelopment Agency 2013/14 Annual Report.
- c. City of Safety Harbor Community Redevelopment Agency Fiscal Year 12/13 Annual Report.
- d. Southwest Florida Water Management District Comprehensive Annual Financial Report and Annual Financial Report for the Fiscal Year Ended September 30, 2013 (CD).
- e. Dock Fee Report for the month of March 2014.
- f. Quarterly Report of Routine Dock and Dredge/Fill Permits issued from January 1, 2014 to March 31, 2014.



City of Safety Harbor Florida

HOME OF ESPIRITU SANTO MINERAL SPRINGS

750 Main Street + Safety Harbor, Florida 34695

(727) 724-1555 + Fax (727) 724-1566

www.cityofsafetyharbor.com

March 28, 2014

Mr. Robert S. LaSala
County Administrator
315 Court Street
Clearwater, FL 33756

RECEIVED
BOARD OF
2014 MAR 31 PM 2:57
BOARD OF COUNTY
COMMISSIONERS
PINELLAS COUNTY FLORIDA

RE: Annual Report FY 12/13, Safety Harbor Community Redevelopment Agency

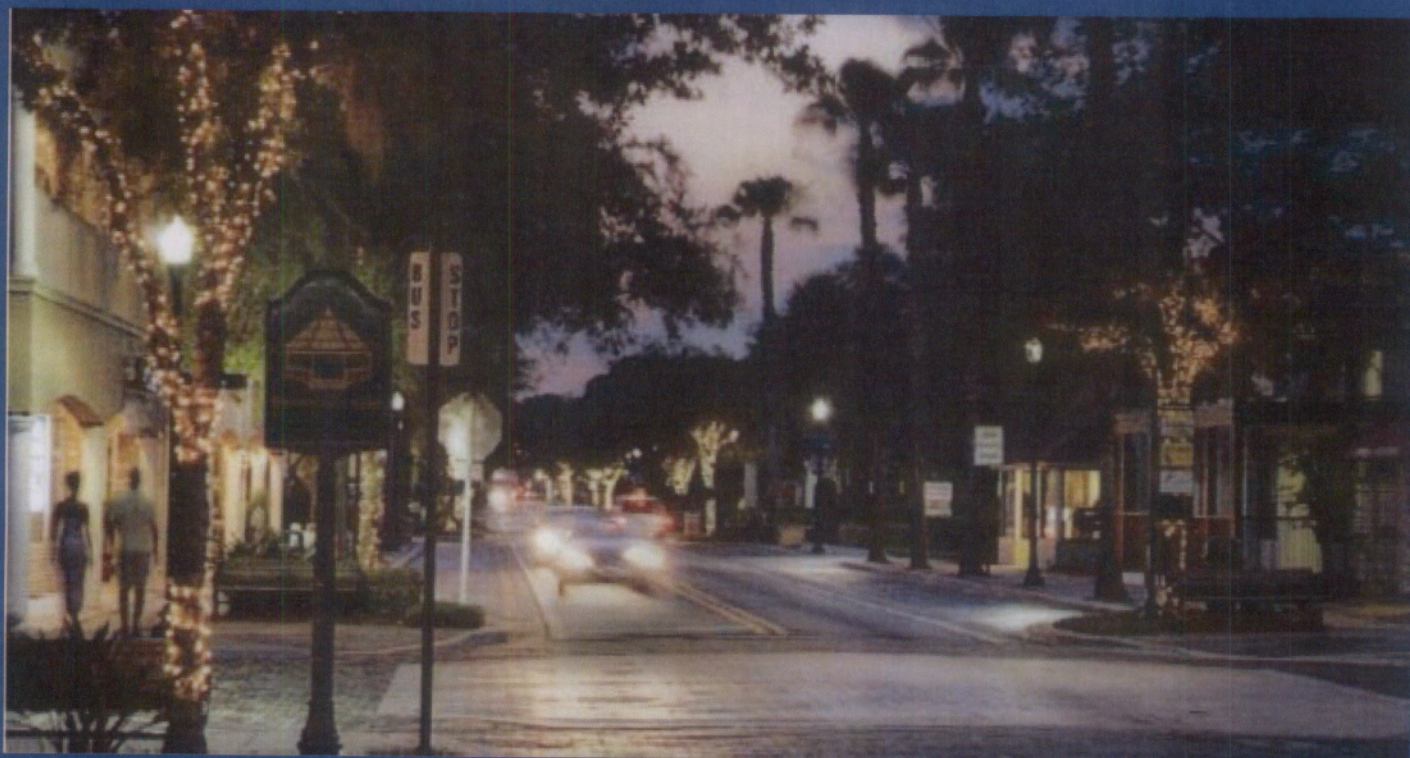
Dear Mr. LaSala:

Enclosed please find a copy of the FY 12-13 Annual Report for the City of Safety Harbor Community Redevelopment Agency. Audited copies of the CRA's financial statements will be included in the City's 2013 Comprehensive Annual Financial Report that is currently scheduled for City Commission presentation next month. Copies of this report will be available for public inspection at the City Clerk's office in City Hall and the Public Library.

Sincerely,

Matthew L. Spoor, City Manager

Cc: Ryan Brinson, Planner
Karen Sammons, City Clerk
June Solanes, Finance Director
Matt McLachlan, Assistant City Manager/Community Development Director
Lisa Kothe, Director, Safety Harbor Public Library



CITY OF SAFETY HARBOR COMMUNITY REDEVELOPMENT AGENCY

FY 12/13 Annual Report



PURPOSE

Pursuant to Section 163.356(3)(C) of Florida Statutes, the City of Safety Harbor Community Redevelopment Agency is required to:

...file with the governing body, on or before March 31 of each year, a report of its activities for the preceding fiscal year, which report shall include a complete financial statement setting forth its assets, liabilities, income and operating expenses as of the end of such fiscal year. At the time of the filing the report, the agency shall publish in a newspaper of general circulation in the community a notice to the effect that such report has been filed with the municipality and that the report is available for inspection during business hours in the office of the clerk of the city and in the office of the agency.

The purpose of this Annual Report is to satisfy the requirements of Section 153.356(3)(C) and to provide the public with useful information concerning the Community Redevelopment Area and Agency.

INTRODUCTION

The City's Community Redevelopment Agency (CRA) was created in 1992 to plan, promote, and carry-out downtown revitalization projects and initiatives targeted at removing real and perceived barriers to community redevelopment. Each year, the CRA produces an Annual Report of its activities for the preceding fiscal year to document its progress in achieving the goals, objectives and action strategies set forth in the adopted Community Redevelopment Plan. The CRA continues to focus on fixing the basics and making the downtown a better version of what it already is – a walkable town center framed by traditional neighborhoods. The CRA's strategic investments in infrastructure, public facilities and matching grants for private improvements have generated positive momentum in business and real estate activity that have made the downtown a more vital and vibrant activity center within Pinellas county.

In 2009, the City Commission approved an updated Downtown Master Plan that broadened the scope of community redevelopment efforts to include a 48-acre expansion area. The Master Plan was later adopted into the City's Comprehensive Plan as the Special Area Plan to the Community Redevelopment District. The City's Comprehensive Zoning and Land Development Code has been updated to incorporate new standards and regulations that will ensure historical development patterns remain in tact while providing necessary flexibility to accommodate desired infill and redevelopment. The plans and codes are fully compatible with the MPO's Model Livable Community Ordinance and readily adaptable to any new Countywide Transit-Oriented Design standards that are developed to support mass-transit.

The CRA will continue its track record of success by building upon existing assets, proactively facilitating private sector initiatives that align with community goals, sponsoring special events and marketing the downtown as a unique destination place in the region.



Safety Harbor Community Redevelopment Area

FINANCIAL STATEMENT

The City of Safety Harbor Community Redevelopment Agency Fiscal Year 2013 Annual Report covers all activities from October 1, 2012 to September 30, 2013. As required by Florida Statute 163.356(c), the report includes a complete financial statement of the CRA's assets, liabilities, income and operating expenses, amount of tax increment funds collected, and a record of CRA activities for the fiscal year. This information is also detailed in the Comprehensive Annual Financial Report for the City.

City Resolution 92-26 created the City of Safety Harbor Community Redevelopment Agency. This Resolution declares that the five (5) members of the City Commission shall constitute the Community Redevelopment Agency. Pinellas County, a charter county, delegated the powers and authority to the City by County Resolution 92-152. The City Manager acts as the Executive Director and the City Attorney provides the Agency with legal counsel.

City Ordinance 92-24 and County Ordinance 92-60 established the Redevelopment Trust Fund. The Tax Increment Finance District covers properties inside the Original CRA (approximately 108-acres). At this time, there are no plans to establish a tax increment finance district for the expansion area. The CRA is solely funded through tax increment finance revenues.

Capital projects and other operating expenses related to the downtown funded by the City of Safety Harbor are detailed in the Comprehensive Annual Financial Report for the City.



2013 CRA BOARD

Mayor Joseph Ayoub (Center)
Vice-Mayor Nina Bandoni (Seated Right)
Commissioner Richard Blake (Seated Left)
Commissioner Nancy Besore (Standing Left)
Commissioner Cliff Merz (Standing Right)

**CITY OF SAFETY HARBOR, FLORIDA
BALANCE SHEET – GOVERNMENTAL FUNDS
FOR THE YEAR ENDED SEPTEMBER 30, 2013**

	General	Community Redevelopment Agency	Capital Projects	Street Light Assessment	Other Non-major Governmental Funds	Total Governmental Funds
Assets						
Cash and cash equivalents	\$ 8,956,357	\$ 272,576	\$ 1,065,913	\$ 18,169	\$ 1,883,942	\$ 12,196,957
Receivables, net:						
Accounts receivable	372,673	639	2,499	34,788	7,433	418,032
Due from other funds - stormwater fund	72,000	-	-	-	-	72,000
Due from other governments	293,945	-	280,414	-	37,405	611,764
Inventories	78,308	-	-	-	-	78,308
Prepaid items	2,333	-	-	-	-	2,333
Total assets	\$ 9,775,616	\$ 273,215	\$ 1,348,826	\$ 52,957	\$ 1,928,780	\$ 13,379,394
Liabilities, Deferred Inflows of Resources and Fund Balances						
Liabilities:						
Accounts payable	\$ 107,370	\$ 7,224	\$ -	\$ 21,659	\$ 37,955	\$ 174,208
Accrued liabilities	304,783	1,586	-	-	568	306,937
Customer deposits	4,503	-	-	-	4,667	9,170
Total liabilities	416,656	8,810	-	21,659	43,190	490,315
Deferred Inflows of Resources:						
Proceeds from sale of future revenues	1,037,900	-	594	-	1,255	1,039,749
Fund Balances:						
Nonspendable:						
Inventories and prepaid items	34,784	-	-	-	-	34,784
Restricted for:						
General government	-	239,724	-	-	-	239,724
Fire protection	-	-	-	-	7,058	7,058
Physical environment	-	-	-	-	-	-
Transportation	-	-	-	31,298	405,961	437,259
Library	-	-	-	-	11,490	11,490
Parks and recreation	-	-	-	-	368,427	368,427
Debt service	-	-	-	-	141,495	141,495
Capital projects	-	-	1,331,319	-	-	1,331,319
Committed to:						
Emergency/disaster relief stabilization	2,580,409	-	-	-	-	2,580,409
Physical environment	-	-	-	-	267,150	267,150
Assigned to:						
General government	-	24,681	16,913	-	-	41,594
Fire protection	-	-	-	-	1,568	1,568
Physical environment	-	-	-	-	2,686	2,686
Transportation	-	-	-	-	362,599	362,599
Parks and recreation	-	-	-	-	315,901	315,901
Other	68,270	-	-	-	-	68,270
Unassigned:	5,637,597	-	-	-	-	5,637,597
Total fund balances	8,321,060	264,405	1,348,232	31,298	1,884,335	11,849,330
Total liabilities, deferred inflows of resources and fund balances	\$ 9,775,616	\$ 273,215	\$ 1,348,826	\$ 52,957	\$ 1,928,780	\$ 13,379,394

The notes to the basic financial statements are an integral part of this statement.

CITY OF SAFETY HARBOR, FLORIDA
RECONCILIATION OF THE BALANCE SHEET –
GOVERNMENTAL FUNDS TO THE STATEMENT OF NET POSITION
FOR THE YEAR ENDED SEPTEMBER 30, 2013

Fund balances - total governmental funds	\$ 11,849,330
--	---------------

Amounts reported for governmental activities in the statement
of net position are different because:

Capital assets used in governmental activities are not financial resources
and therefore are not reported in the governmental funds.

Governmental capital assets		
Non depreciable	\$ 6,747,367	
Depreciable	39,992,210	
Less, accumulated depreciation	<u>21,881,243</u>	24,858,334

The net pension asset related to governmental activities does not represent financial resources and is not reported in the funds.	477,520
--	---------

Long-term liabilities are not due and payable in the current period
and, therefore, are not reported in the governmental funds.

Revenue notes payable	(6,731,200)	
Capital lease payable	(245,000)	
Compensated absences	(811,386)	
Other post employment benefits	<u>(208,428)</u>	<u>(7,996,014)</u>

Net position of governmental activities	<u><u>\$ 29,189,170</u></u>
---	-----------------------------

The notes to the basic financial statements are an integral part of this statement.

CITY OF SAFETY HARBOR, FLORIDA
STATEMENT OF REVENUES, EXPENDITURES, AND CHANGES
IN FUND BALANCES – GOVERNMENTAL FUNDS
FOR THE YEAR ENDED SEPTEMBER 30, 2013

	General	Community Redevelopment Agency	Capital Projects	Street Light Assessment	Other Non-major Governmental Funds	Total Governmental Funds
Revenues						
Property taxes	\$ 2,951,352	\$ 264,264	\$ -	\$ -	\$ -	\$ 3,215,616
Utility taxes	2,386,797	-	-	-	-	2,386,797
Local business taxes	150,074	-	-	-	-	150,074
Local option taxes	138,063	-	1,429,225	-	230,995	1,798,283
Franchise fees	1,361,010	-	-	-	-	1,361,010
Licenses and permits	311,272	-	-	-	-	311,272
Impact fees	-	-	-	-	59,875	59,875
Special assessments	-	-	-	312,557	100	312,657
Sales tax	928,330	-	-	-	-	928,330
Intergovernmental	1,925,122	-	42,210	-	-	1,967,332
Charges for services	994,611	-	-	-	42,964	1,037,575
Fines and forfeitures	77,530	-	-	-	-	77,530
Interest income and net depreciation in fair value of investments	(29,840)	(1,618)	(3,203)	(349)	(9,627)	(44,637)
Other	956,685	5,175	-	-	-	961,860
Total revenues	12,151,006	267,821	1,468,232	312,208	324,307	14,523,574
Expenditures						
Current operating						
General government	2,477,840	106,920	-	-	-	2,584,760
Law enforcement	1,221,973	-	-	-	-	1,221,973
Fire protection	3,672,859	-	-	-	-	3,672,859
Building department	288,643	-	-	-	-	288,643
Physical environment	388,422	-	-	-	37,231	425,653
Transportation	697,550	-	-	280,910	72,993	1,051,453
Library	1,095,553	-	-	-	-	1,095,553
Parks and recreation	2,315,987	-	-	-	13,525	2,329,512
Capital outlay	107,587	295,365	915,793	-	103,989	1,422,734
Debt service	-	-	-	-	-	-
Principal payments	-	-	-	-	628,982	628,982
Interest and other fiscal charges	-	-	-	-	208,644	208,644
Total expenditures	12,266,414	402,285	915,793	280,910	1,065,364	14,930,766
Excess (deficiency) of revenues over (under) expenditures	(115,408)	(134,464)	552,439	31,298	(741,057)	(407,192)
Other financing sources (uses)						
Transfers in	-	-	80,990	-	1,023,840	1,104,830
Transfers out	-	-	(903,040)	-	(90,990)	(984,030)
Total other financing sources (uses)	-	-	(822,050)	-	932,850	120,800
Net change in fund balances	(115,408)	(134,464)	(269,611)	31,298	201,793	(286,392)
Fund balances, beginning of year	8,436,468	398,869	1,617,843	-	1,682,542	12,135,722
Fund balances, end of year	\$ 8,321,060	\$ 264,405	\$ 1,348,232	\$ 31,298	\$ 1,884,335	\$ 11,849,330

The notes to the basic financial statements are an integral part of this statement.

CITY OF SAFETY HARBOR, FLORIDA
RECONCILIATION TO THE STATEMENT OF REVENUES,
EXPENDITURES, AND CHANGES IN FUND BALANCES OF
GOVERNMENTAL FUNDS TO THE STATEMENT OF ACTIVITIES
FOR THE YEAR ENDED SEPTEMBER 30, 2013

Net change in fund balances - total governmental funds \$ (286,392)

Amounts reported for governmental activities in the statement
of activities are different because:

Governmental funds report capital outlays as expenditures. However, in
the statement of activities, the cost of those assets is allocated over their
estimated useful lives as depreciation expense.

Expenditure for capital assets	1,387,573	
Less, current year depreciation	<u>1,844,281</u>	(456,708)

Net pension asset is not a current financial resources and consequently is
not reported in the governmental funds. However, it is an asset in the
statement of net position.

Current year change in the pension asset	32,489
--	--------

Repayment of of long-term debt is reported as an expenditure in
governmental funds, but the repayment reduces long-term liabilities in the
statement of net position.

Capital lease	5,000
Principal payments	628,982

Some expenses reported in the statement of activities do not require the
use of current financial resources, and therefore, are not reported as
expenditures in governmental funds.

Compensated absences	73,704	
Other post employment benefits	<u>(45,033)</u>	<u>28,671</u>

Change in net position of governmental activities	<u>\$ (47,958)</u>
---	--------------------

The notes to the basic financial statements are an integral part of this statement.

CITY OF SAFETY HARBOR, FLORIDA
NOTES TO THE BASIC FINANCIAL STATEMENTS
SEPTEMBER 30, 2013

NOTE 10 – REDEVELOPMENT TRUST FUND

Pursuant to Florida Statute 163.387, the schedule below provides a summary of the sources of deposits into, and the amount and purpose of withdrawals from, the Redevelopment Trust Fund (Community Redevelopment Agency Fund) for the fiscal year ended September 30, 2013.

	<u>Deposits</u>	<u>Withdrawals</u>
Sources of deposits:		
Ad valorem taxes	\$ 105,325	\$ -
Ad valorem taxes from Pinellas County	158,939	-
Parking in lieu of fee	5,175	-
Interest and investment income	(1,618)	-
Purpose of withdrawals:		
Personal services	-	42,483
Brochures	-	545
District fees	-	175
Façade and partnership incentives	-	43,511
Decorative lighting	-	3,244
Streetscaping - benches, trash cans, planter, ballasts	-	696
Public Art Committee	-	15,832
Land lease - CSX	-	434
Mullet Creek Park	-	163,050
Mullet Creek Park playground equipment	-	50,000
Waterfront Park development	-	16,301
2nd Street parking phase II	-	17,817
Museum improvements	-	35,034
Baranoff Park improvements	-	13,163
Totals	<u>\$ 267,821</u>	<u>\$ 402,285</u>

NOTE 11 – RISK MANAGEMENT

The City is a member of Public Risk Management (PRM), a local government liability risk pool. PRM administers insurance activities relating to property, general, automobile and public officials' liability, employees' health and auto physical damage. PRM absorbs losses up to a specified amount annually and purchases excess and other specific coverages from third-party carriers. PRM assesses each member their pro rata share of the estimated amount required to meet current year losses and operating expenses. If total member assessments (premiums) do not produce sufficient funds to meet its obligations, PRM can make additional limited assessments. Losses, if any, in excess of PRM's ability to assess its members would revert back to the member that incurred the loss. No additional assessments were levied by PRM to the City for the fiscal year ended September 30, 2013. The City had no significant reductions in insurance coverage during the fiscal year ended September 30, 2013. In addition, there have been no settlements that exceeded the City's insurance coverage in any of the past three fiscal years.

The City is a defendant in various legal actions that, in the opinion of management, will not have a significant effect on the financial position or results of operations of the City.

PROGRESS REPORT ON CRA ACTION STRATEGY

Implementation of the Downtown Master Plan is motivated by the desire by the City to achieve its vision of becoming a vibrant destination city with a unique quality of life – a city successful in balancing responsible, innovative growth with careful preservation of its small town atmosphere, its quaint character, and its valued treasures. According to the citizen survey performed in tandem with the visioning process, the majority of residents feel that the City, in addition to ensuring public safety and protecting the environment, should concentrate its redevelopment efforts on: (1) addressing traffic safety and parking issues; (2) bringing in more dining and retail stores Downtown, (3) encouraging compatible economic development and diversification of the tax base; and (4) addressing the availability of affordable housing.

Community Parkland

In FY 12-13, the CRA completed the construction of Mullet Creek Park, a new neighborhood park, and funded the construction of a new children's playground in the park. The playground is nature themed, in keeping with the surrounding park setting and encourages creative natural play. The park was planned and designed by City Staff with extensive community involvement. The project was identified in the Downtown Master Plan as a needed enhancement to the northern gateway to the downtown.

Following an extensive public planning process to develop a master plan for a new waterfront park on Old Tampa Bay, this fiscal year the CRA began funding the implementation of this master plan. With the assistance of the CRA the Safety Harbor Waterfront Park was opened to the public as unimproved greenspace during a celebratory "roll back the fence" event. Since this grand opening the greenspace has been readily used by the community for special events (such as "The Best Damn Race" half marathon), festivals (such as the San Gennaro Festa), and passive recreation. Additionally, the CRA has begun funding the environmental studies needed in order to develop the future physical improvements of the master plan.

Arts, Preservation , Culture and Environment

The CRA also funded improvements to the newly renovated Safety Harbor Museum and Cultural Center. The Museum and Cultural Center offers a multitude of activities that celebrates the history of Safety Harbor while welcoming the growing arts community. Activities and classes include art and creative writing workshops, and historic exhibits and celebrations. Success in the transformative renovation of the museum has created a significant increase in public interest and use of the renovated facility. Thus, CRA funding was provided for the installation of additional cabinetry for exhibits, welcome desk, and storage, and a security alarm system.

PROGRESS REPORT ON CRA ACTION STRATEGY

Arts, Preservation , Culture and Environment Continued

The CRA continues to support opportunities for the display of public art. In its second year "Showcase: Safety Harbor", an annual rotating display for public art, exhibited "Save Dog Save" in front of City Hall, and "Rock-Et Man" at the Museum and Cultural Center. Additionally, the CRA funded the painting of a historic mural on the Chamber of Commerce building, supporting art in the community while at the same time aiding the chamber's visibility on Main Street.

The iconic 300 year old Baranoff Oak Tree is a staple attraction to the City's downtown. In an effort to provided long term preservation of this unique cultural and environmental treasure the CRA funded measures to improve the surrounding soils, irrigation and protection for the tree. Additional space for healthy future root growth was created by removing a portion of the adjacent plaza and filling with new soil, mulch, and irrigation. Maintenance pruning of dead branches was completed and a complete lightning protection system was installed.

Economic Development

The CRA continued its success with the Downtown Partnership Program awarding 12 grants totaling \$37,817 to leverage \$172,459 in matching private investment (1:4 public to private investment ratio) during the fiscal year. These grants included the funding of major renovations for small business owners along Main Street. A mixed-use retail/office space was created for a boutique jewelry store and financial services office. Another successful example of CRA support of small business includes the interior and exterior renovations of a bistro restaurant, called "The Sandwich on Main" right in the heart of downtown. This renovation included full upgrades for ADA accessibility and compliance for a business establishment of this nature.

PROGRESS REPORT – MULLET CREEK PARK CHILDREN'S PLAYGROUND



View of Mullet Creek Park
which forms the northern
gateway to Downtown and
New Children's Nature
Themed Playground



PROGRESS REPORT – SAFETY HARBOR WATERFRONT PARK

A Community Driven Master Plan. This master plan includes passive park improvements that will be implemented over time.

**SAFETY HARBOR
WATERFRONT PARK**

**A DESTINATION FOR PLAYING,
ENTERTAINMENT & RELAXATION**

On February 1, 2012, the City of Safety Harbor purchased thirteen acres of waterfront property from the Safety Harbor Resort and Spa for public recreational use and enjoyment. Shortly thereafter, the City Commission appointed a fifteen member Steering Committee to oversee the development of conceptual master plan alternatives for a passive park. Through several workshops and public outreach activities, the Steering Committee was able to reach a consensus on the preferred alternative. On January 7, 2013, the City Commission unanimously approved the Steering Committee's recommendation and stand word work on implementation strategy. On June 17, 2013, the City Commission approved \$2.25 million to be allocated over the next two fiscal years towards design, permitting, and construction of the first phase.

This master plan essentially proposes an interconnected green belt park that showcases the natural beauty of the waterfront. A quaint beach area, multi-use trails, and a boardwalk with views along the bay create the pedestrian infrastructure to support passive park amenities. Thus, the plan provides a variety of recreational opportunities for unstructured play, rest, and contemplation distinct from the intensive recreation found in other city parks. The heart of the park provides a venue for bringing the community together for special events such as musical performances, movies, art exhibitions and fireworks shows. Final phases of the plan include a new way to connect the waterfront in order to appeal to an increasingly wide range of Safety Harbor residents and visitors. More specifically, this includes a plaza with an interactive children's splash pad and seating which gently terraces down to the water. In addition, the plan preserves the potential for a future building to be sited on the Military Land. The location of this building is shown in the accompanying map. The location of this building is shown as a conceptually demonstrate how this improvement can function as a part of the greater park facility.

Phase One of this waterfront park will focus on the immediate improvements needed to allow for safe and enjoyable public access, as well as, establishing the infrastructure for the park. Phase One will include the following:

- Environmental studies and permitting;
- Removal of invasive exotic plant species;
- Engineering, grading and drainage;
- Public parking;
- Multi-use trail and shore front pedestrian trail, and
- Open greenspace lawn and irrigation

This phased approach to the development of the waterfront park will ensure an organized incorporation of future amenities, such as the children's splash pad, boardwalk system, and event/stage area as funding is made available. Together, all these elements will create a public realm that can be enjoyed by all ages and segments of the community for many years to come.



PROGRESS REPORT – SAFETY HARBOR WATERFRONT PARK

Waterfront Park property opens to the community as unimproved passive greenspace . Physical park improvements included in the master plan , such as trails, a boardwalk, public art, seating, landscaping, and parking are planned for the near future.



PROGRESS REPORT – SAFETY HARBOR MUSEUM & CULTURAL CENTER



Recent Façade Renovation



Interior Improvements



PROGRESS REPORT – PUBLIC ART



Showcase: Safety Harbor
An annual exhibition space for public art

Showcase: Safety Harbor

A TEMPORARY EXHIBITION FUNDED BY: THE COMMUNITY REDEVELOPMENT AGENCY

SAVE DOG SAVE!

BY: MITCH LEVIN

Artist Statement: "My inspiration for this sculpture was the tragic events of 911. My ties to New York were my stepfather who was from Brooklyn and was a hospital emergency room doctor. The sculpture's individual squares represent the broken pieces of our lives after that day... But put back together, they show our character and strength as Americans. The Sculpture is titled, Save Dog Save! His name is Brooklyn, and he is made from recycled, reused and repurposed steel elements. He is meant to honor the men and women who lost their lives as heroes on that day. The light-hearted imagery of Brooklyn is intended to bring hope, joy, love, and laughter back to all that live on."



SAFETYHARBORPUBLICART.COM

"Rocket- Et Man" at Museum
and Cultural Center



PROGRESS REPORT – BARANOFF OAK TREE PRESERVATION



New soil, irrigation, pruning and
cleaning of deadwood, and installation
of lightning protection system for the
City's iconic oak tree



PROGRESS REPORT – ECONOMIC DEVELOPMENT DOWNTOWN PARTNERSHIP PROGRAM

Exterior and interior renovations to create a mixed-use office/retail building on Main Street. The renovated building houses a new boutique jewelry store and financial services office.



Before



After

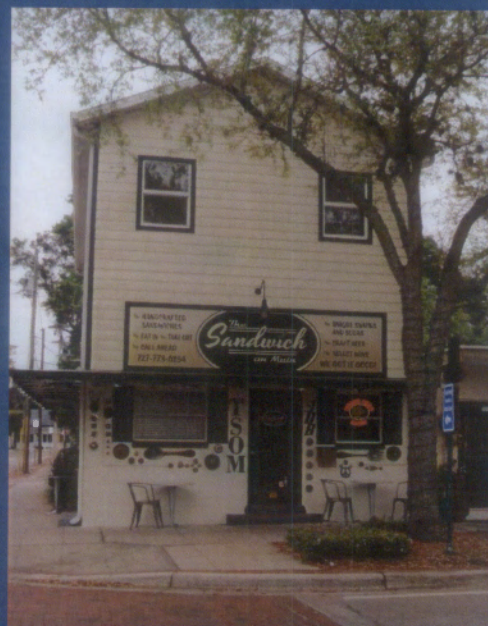
Exterior and Interior renovations to create a new bistro/restaurant, called
"The Sandwich On Main" on Main Street



Before



After



City Mission Statement:

"Safety Harbor will be a vibrant destination city with a unique quality of life – a city that is successful balancing responsible, innovative growth with careful preservation of its small-town atmosphere, its quaint character, and its valued treasures."



CONTACT US:

Matthew L. Spoor, CPRP
City Manager/Executive Director
Safety Harbor Community
Redevelopment Agency
750 Main Street
Safety Harbor, Florida 34695
(727) 724-1555
www.cityofsafetyharbor.com

