

4. REPORTS TO BE RECEIVED FOR FILING:

- a. Division of Inspector General, Audit Services, Clerk of the Circuit Court and Comptroller, Report No. 2014-05 dated February 13, 2014 – Follow-Up Audit of Fleet Allocations.
- b. Division of Inspector General, Audit Services, Clerk of the Circuit Court and Comptroller, Report No. 2014-06 dated February 20, 2014 – Audit of Service and Maintenance Contracts for Parks and Conservation Resources.
- c. Pinellas Planning Council Annual Report, Fiscal Year 2013, "Planning for the Pinellas Community."
- d. Dock Fee Report for the month of February 2014.
- e. Division of Inspector General, Audit Services, Clerk of the Circuit Court and Comptroller, Annual Report for the Year Ended December 31, 2013.



Annual Report

Fiscal Year 2013



Planning for the Pinellas Community

The Pinellas Planning Council



Chairman
Councilmember Jim Kennedy
City of St. Petersburg



Mayor
Dave Eggers
City of Dunedin



Vice-Chairman
Mayor David O. Archie
City of Tarpon Springs



Councilmember
Doreen Hock-DiPolito
City of Clearwater



Treasurer
Commissioner John Morroni
Pinellas County



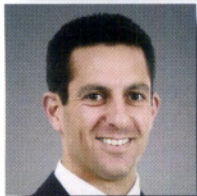
Vice-Mayor Joanne "Cookie" Kennedy
City of Indian Rocks Beach
Representing Group B Communities



Secretary
Mayor Samuel Henderson
City of Gulfport
Representing Group C Communities



Vice-Mayor
Jerry Mullins
City of Pinellas Park



Mayor
Joseph Ayoub
City of Safety Harbor



School Board Member
Peggy O'Shea
Pinellas County School District



Mayor
Doug Bevis
City of Oldsmar



Commissioner Marvin Shavlan
City of St. Pete Beach
Representing Group A Communities



Commissioner
Harriet K. Crozier
City of Largo

Group A
Communities:
Madeira Beach
St. Pete Beach
Treasure Island

Group B
Communities:
Belleair Shore
Belleair Beach
Indian Rocks Beach
Indian Shores
North Redington Beach
Redington Beach
Redington Shores

Group C
Communities:
Belleair
Belleair Bluffs
Gulfport
Kenneth City
Seminole
South Pasadena

Cover Photos (top to bottom, left to right)

- City Hall, St. Pete Beach
- Cleveland Street, Clearwater
- Central Avenue, St. Petersburg
- Epicenter, Largo
- Main Street, Safety Harbor

Chairman's Message

It's been another eventful year, one that we look back upon with pride in our accomplishments. The PPC is proceeding with the final steps of unification with the Pinellas County Metropolitan Planning Organization (MPO). Although both the PPC and MPO will continue to exist, they will have a unified board and a common executive director. This will result in a coordination of land use and transportation to allow for more efficient planning.

This year, prior to unification being fully completed, we worked in earnest towards the updating of the Countywide Plan and its full integration with countywide transportation planning. A truly collaborative process, the effort has included the input of planning staff from many local governments, as well as partner agencies including the MPO, Pinellas Suncoast Transit Authority (PSTA), Tampa Bay Area Regional Transportation Authority (TBARTA), and Pinellas County Economic Development Department. We are on track to adopt an updated plan in the spring of 2014.

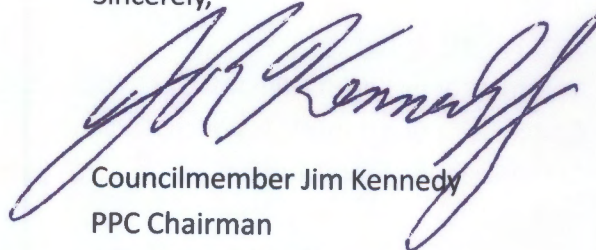
As part of this integration, the PPC has been closely involved in the Long Range Transportation Plan update of the MPO, and the planning efforts of the Advisory Committee for Pinellas Transportation (ACPT), a committee of elected officials also representing the MPO, PSTA, and TBARTA. The ACPT is charged with ensuring that the various countywide and regional transportation and land use planning efforts are coordinated with one

another, particularly with regards to Greenlight Pinellas, a transformative plan for high-quality bus and rail transit enhancements throughout the county. The PPC has unanimously endorsed Greenlight Pinellas.

The PPC has accomplished many other tasks this year as well, in efforts that you will read further about in the pages of this annual report. We continue to be a leader in adopting Geographic Information System (GIS) technology; we've provided successful grantwriting assistance to local governments; and we've reached out to the community to educate and inform them about our countywide planning efforts.

Above all, it's been my honor to serve as the PPC Chairman. I would like to thank my fellow Council members and the PPC staff for all of their hard work and thoughtful contributions during the past year. The next year will bring many changes, but I have no doubt that we will continue to fulfill our countywide mission with the same standard of excellence we've always striven to attain.

Sincerely,



Councilmember Jim Kennedy
PPC Chairman
City of St. Petersburg

Countywide Planning Authority

The Board of County Commissioners serves as the Countywide Planning Authority (CPA) for Pinellas County, as provided for in the Special Act and the County Charter governing the countywide planning process. The seven elected county commissioners, in their capacity as the CPA, serve as the final decision-making body in the administration

of the Countywide Plan for Pinellas County. County Commissioner John Morroni served as the Pinellas County representative on the PPC this year. He has been an effective liaison between the PPC and the CPA, helping to stimulate thoughtful discussions regarding many countywide planning issues.



The Countywide Planning Authority

Seated, left to right:

Commissioner Karen Williams Seel, Vice-Chair
Commissioner Kenneth T. Welch, Chair
Commissioner John Morroni

Standing, left to right:

Commissioner Charlie Justice
Commissioner Susan Latvala
Commissioner Janet Long
Commissioner Norm Roche

Planners Advisory Committee

The Planners Advisory Committee (PAC) provides technical input and makes recommendations on matters that come before the PPC. The committee is made up of directors of local government planning departments or their selected representatives,

as well as a representative from the Pinellas County School District staff. Lauren Matzke of Clearwater and Marie Dauphinais served, respectively, as Chair and Vice-Chair of the PAC for FY 2013.



The Planners Advisory Committee

Seated, left to right:

Lauren Matzke, Clearwater (Chair); Gordon Beardslee, Pinellas County; Marie Dauphinais, Oldsmar (Vice-Chair); Chelsey Welden, St. Pete Beach

Standing, left to right:

Marshall Touchton, Pinellas County School District; Matt McLachlan, Safety Harbor; Greg Rice, Dunedin; Fred Metcalf, Gulfport; Jan Norsoph, Seminole; Robert Klute, Largo; Dean Neal, Pinellas Park; Danny Taylor, Indian Rocks Beach

Not present for picture:

Sharon Cornetet, Indian Shores; Lynn Rosetti, Madeira Beach; Mary Palmer, Redington Shores; Derek Kilborn, St. Petersburg; Renea Vincent, Tarpon Springs; Michelle Orton, Treasure Island

The Countywide Planning Process

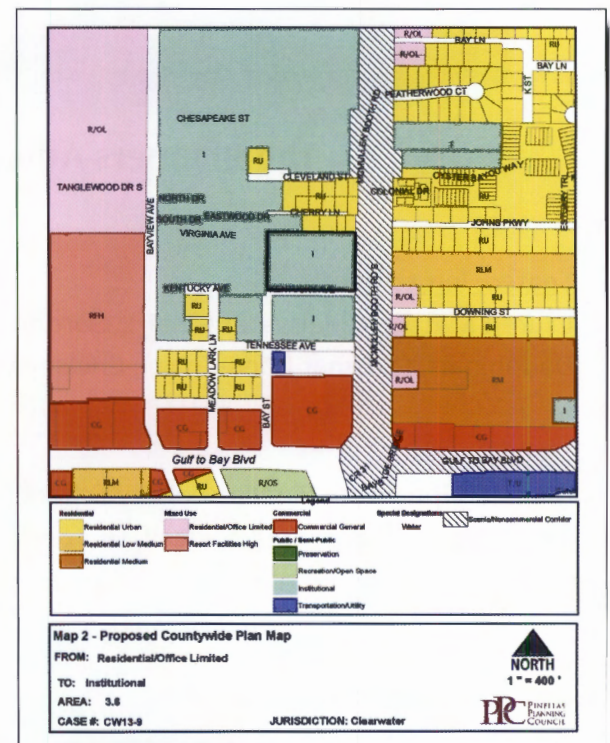
As set forth in Chapter 88-464, Laws of Florida (also known as the Special Act), the PPC is made up of representatives of the county's twenty-five local governments and the Pinellas County School District. The PPC provides planning advice and recommendations to the Board of County Commissioners, which is authorized by the county charter to act as the Countywide Planning Authority (CPA).

Since 1989, the PPC has played an innovative planning role in the affairs of the county. Actions of the Council have formalized countywide land use plan consistency, placing Pinellas County in a very small group of jurisdictions that have achieved that level of planning coordination.

The mission of the PPC, as the advisory body to the CPA, is to maintain and enhance a representative forum for countywide planning that provides for overall policy direction, plan consistency, interagency coordination, and technical assistance in furtherance of a coherent, efficient, and effective countywide planning process.

Countywide Plan Map Amendments

The Special Act establishes the authority of the Countywide Plan, including the Countywide Plan Map and Countywide Rules, with which all Pinellas County local government comprehensive plans must be consistent. Any local government choosing to amend its future land use map must submit the proposed amendment to the PPC and CPA for review and approval. This arrangement provides for commonality among local plans, but also respects the unique character of each community.



Countywide Plan Map Amendment

Major Countywide Future Land Use Category	Change in Acres
Residential	-10.8
Mixed-Use	-2.2
Commercial	+2.9
Industrial	+0.9
Public/Semi-Public	+49.6
Planned Redevelopment	+0.7
Special Designations	+1.0
Other	-40.1

planning in a built-out environment. One of the cases approved by the PPC was subsequently denied by the CPA. The applicant appealed the case to the State of Florida Division of Administrative Hearings, where it was ultimately remanded back to the CPA for reconsideration in FY 2014.

The table to the left shows the changes in land use acreage by major category approved by the CPA in FY 2013.

In addition to providing technical reviews of proposed Countywide Plan Map amendments, PPC staff are available to work informally with local government staff before amendments are submitted for consideration. These preapplication conferences help identify any potential issues or conflicts in advance, and ensure that the formal review process is as efficient as possible.

During this fiscal year, the PPC reviewed seventeen applications for Countywide Plan Map amendments. All were recommended for approval by the Council, but five of those were subject to additional conditions or recommendations, reflecting the innovative approach that is needed when

Annexations

For informational purposes and to help maintain a countywide perspective on annexation, the PPC continues to track voluntary annexations in the county. This fiscal year, the PPC received and tracked 84 voluntary annexation petitions by seven local governments.



The Planners Advisory Committee in Action



PINELLAS PLANNING COUNCIL

600 Cleveland Street, Suite 150, Clearwater, FL 33755-4160
Phone: 727.464.8250 Fax: 727.464.8212

Truth in Annexation Worksheet (continued)

2. What is the COUNTY TAXABLE VALUE of your property? \$

Where can I find this info?

3. Do you have a homestead exemption?

☐ Yes

☐ No

Where can I find this info?

4. What taxing district is your property in?

- ☐ Belleair Bluffs Fire District (BTF)
- ☐ Clearwater Fire District (CTF)
- ☐ Dunedin Fire District (DTF)
- ☐ Eastlake Fire District (ETF)
- ☐ Feather Sound Comm. Svc. District (FSMT)
- ☐ Gandy Fire District (GF)
- ☐ High Point Fire District (HPTF)
- ☐ Safety Harbor Fire District (HTF)
- ☐ Lealman Fire District (LETF)
- ☐ Largo Fire District (LTF)

Online Truth in Annexation Worksheet

Together, the annexations totaled 134 acres, approximately 34 of which reduced or eliminated unincorporated enclaves.

The PPC also tracks involuntary/referendum annexations pursuant to Pinellas County Resolution No. 03-128; however, no referendum annexations occurred this year.

Any annexation of ten or more acres, whether voluntary or involuntary, receives an "ability to serve" review. These reviews are primarily for the purpose of determining if the annexing municipality has the ability to provide the proposed annexation area with urban services, but are also used to identify any other potential issues. Three annexations for the City of Clearwater were large enough to be reviewed this year. All received positive determina-

tions for the ability to serve. Lastly, in a continuing effort to provide assistance to property owners who may be contemplating voluntary annexation, the PPC maintains an online worksheet called "Truth in Annexation," which allows users to estimate how their taxes, fees, and service charges would change following annexation into a given municipality.

Consistency Process

This fiscal year, the PPC continued the process of ensuring that local plans and codes are consistent with the Countywide Plan Map and Rules. Staff conducted 21 consistency reviews of local amendments to comprehensive plans, special area plans, and land development codes, and worked closely with several jurisdictions to address identified inconsistencies. All communities have been issued formal "Determinations of Consistency" contingent upon the local jurisdictions resolving identified issues.

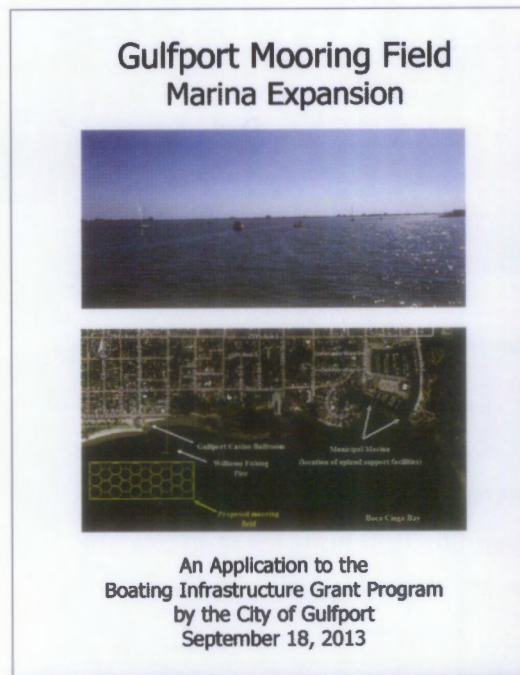
Local Assistance

Planning at the local government level can require large investments of staff time and financial resources, and smaller communities with limited resources often require assistance. The PPC has continued to provide vital

planning assistance to its member local governments.

PPC staff provide several different types of local assistance. Routine technical help is available to local government staff who have questions about, or need help navigating their way through, the countywide planning process. The PPC also tracks state legislation that affects local comprehensive planning and land development regulation, and makes this information available to local government officials and staff.

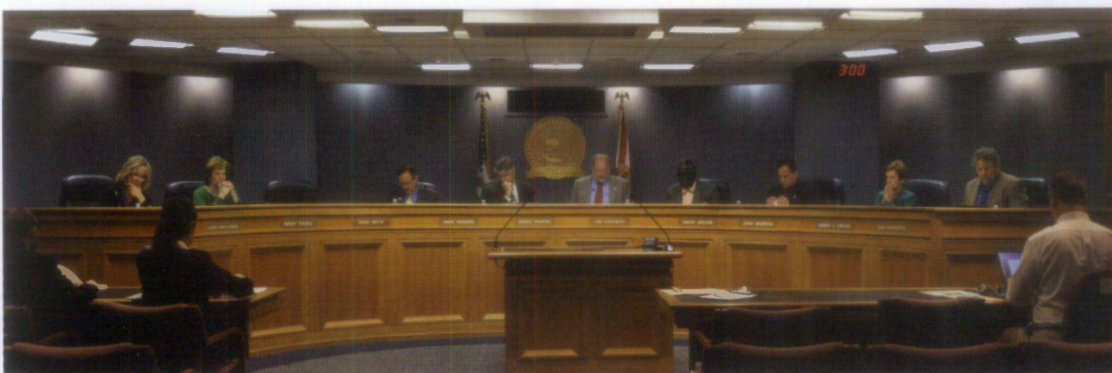
In addition, staff provides assistance to local governments in need of maps, property data, and other geographic information. Nine jurisdictions have agreements with the PPC to maintain their zoning maps, and general mapping assistance is available to all twenty-five local governments upon request. The PPC has been a leading agency in the Pinellas County Enterprise Geographic Information Systems (eGIS) Bureau, an effort to bring improved GIS capability to



Local Grantwriting Assistance

county departments, independent agencies, and local governments.

Assistance of a more hands-on nature is also offered to local governments on a contract basis. This year, grantwriting assistance was provided to the cities of Madeira Beach and Gulfport as they requested funds for enhancement of municipal boating facilities. The PPC has helped local governments bring in \$1.9 million in grant awards since 1996.



The Pinellas Planning Council in Action

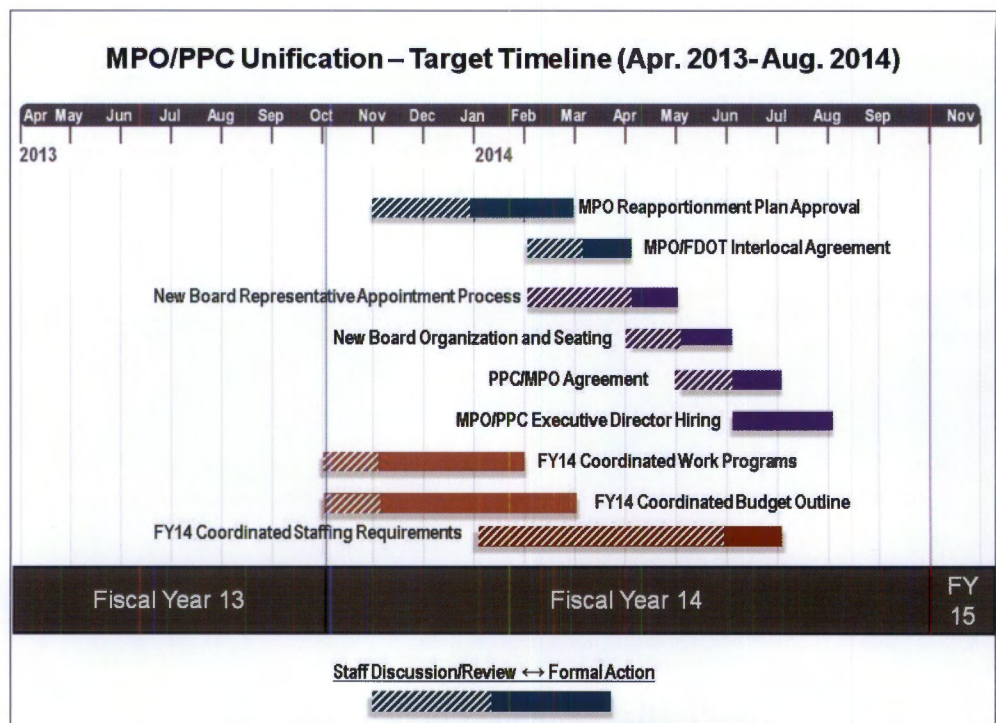
Unifying Land Use and Transportation

Times change, and in our built-out county of twenty-five local governments, it has become increasingly clear that countywide planning functions for land use and transportation need to be more fully coordinated. To that end, during the past three years, the members of the PPC and the Pinellas County Metropolitan Planning Organization (MPO) have been working toward unification of the two agencies.

The result will be a single board with countywide representation, which will oversee countywide planning for both land use and transportation. The effort

has received broad support from the members of the PPC and MPO, other local government representatives, staff leadership from both agencies, and the Pinellas County Legislative Delegation.

In order to accomplish this goal, the Special Act that created the PPC and governs its operations had to be amended by the State Legislature with language enabling unification. While HB 0869 was approved and signed into law during FY 2012, it will only take effect once the MPO is reapportioned to add two new members, one representing the ten beach communities and one representing six smaller inland communities that have not previously had MPO representation.

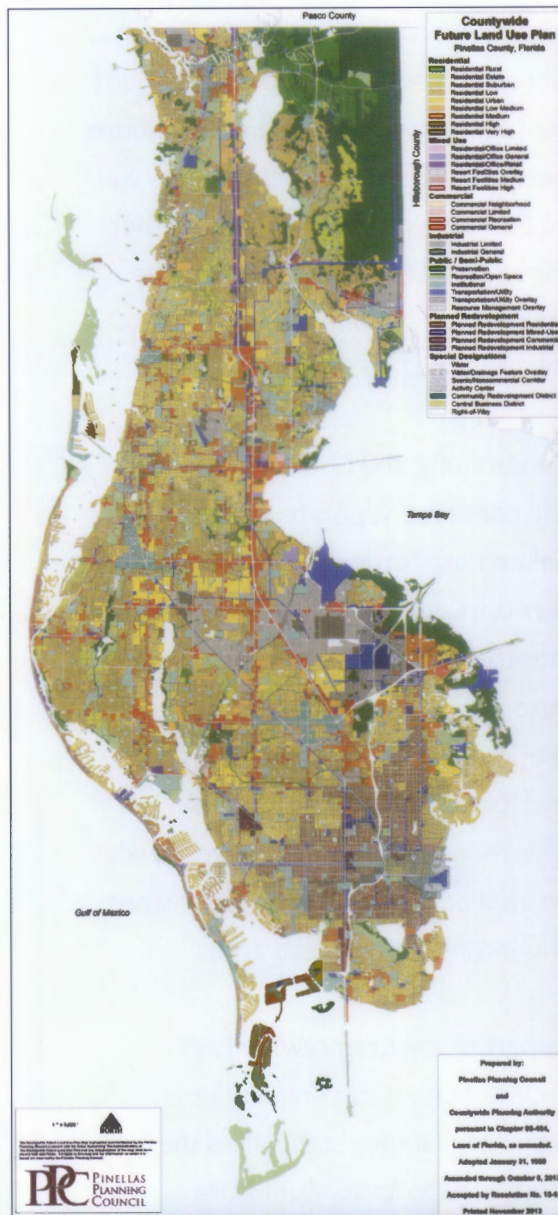


The updated MPO reapportionment plan was submitted to the Florida Department of Transportation (FDOT) and underwent a lengthy review process during FY 2013. FDOT has since forwarded the reapportionment plan to the Governor's office with a recommendation for final approval, which is expected in early 2014. The new combined PPC-MPO board is expected to be seated in early to mid-2014.

In the interim, a Joint Executive Committee made up of three members each from the PPC and MPO has been meeting regularly to address the practical aspects of the merger, such as how an executive director will be selected and how the operational functions of the two agencies will be coordinated. Both agencies have also been reaching out to the local governments who have not previously had MPO representation to provide technical assistance with appointing a member to the new board.

Countywide Plan Update

While the effort to merge the countywide land use and transportation planning functions of the PPC and MPO continues to move forward, PPC staff have been working toward a major component of that process, the creation of a new Countywide Plan that will integrate land use and transportation planning efforts within a single document. This update



The Countywide Plan Map

comprised a significant portion of the PPC work program during FY 2013.

The plan will include a new Countywide Plan Map that is broader and more future-oriented than the current map, and is better integrated with countywide transportation planning. This framework will include fewer future land use categories and a more streamlined process that requires fewer public hearings for

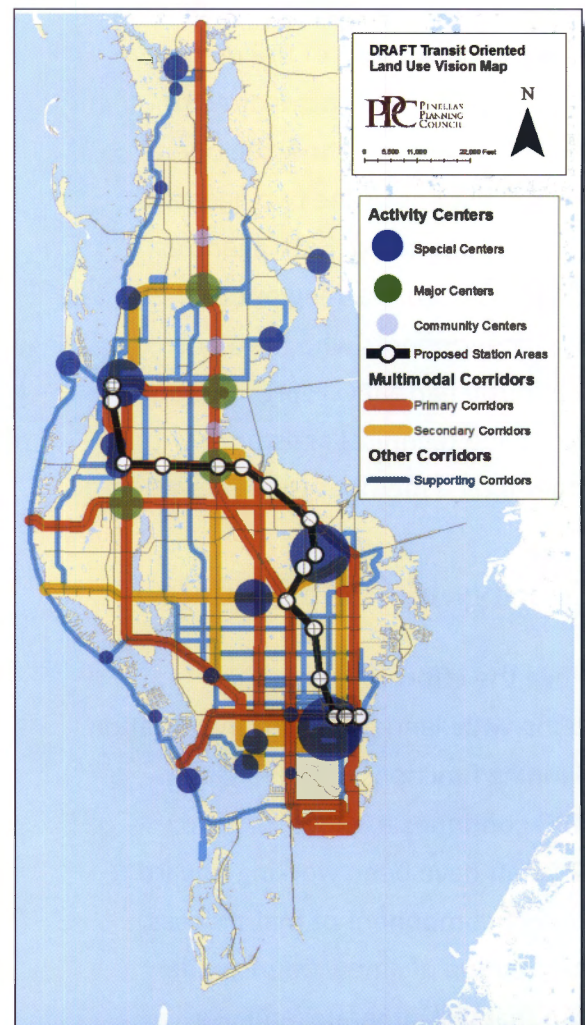
some types of amendments. The map will also include “target employment centers” where land use designations needed by high-wage employers will be limited from conversion to other uses and intensity bonuses will be granted for specified employment-related uses.

Additionally, the Countywide Plan will contain a separate Vision Map delineating future centers and corridors where higher densities and intensities are anticipated or desired based on a combination of land use, real estate, and economic data and local government input. A streamlined regulatory process will be applied to direct higher densities and intensities in these areas.

As part of the Countywide Plan update process, an ongoing peer group of planning staff called the Joint Transportation/Land Use Working Group met throughout FY 2013. In addition to eleven local governments, the group represented other planning agencies including the MPO, Pinellas Suncoast Transit Authority, and Pinellas County Economic Development. The group met on a monthly basis to discuss and deliberate issues pertaining to the new Countywide Plan, and to provide local input and perspective into PPC work products. The group anticipates producing a set of final summary conclusions in early FY 2014, after which time the

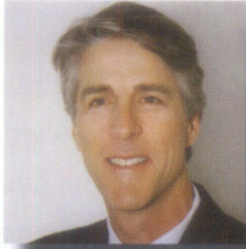
Planners Advisory Committee will proceed with the formal review of draft Countywide Plan and Rule amendments. Adoption of the new plan package by the PPC and CPA is anticipated to occur by Spring 2014.

While formal unification is still a few months in the future, the preparations being made today are ensuring that the process of unifying planning for land use and transportation will be a smooth one, and that gains in planning efficiency and quality will be significant.



**Draft Transit-Oriented
Land Use Vision Map**

Pinellas Planning Council Staff



Michael C. Crawford, AICP
Interim Executive Director



Christopher Mettler
Program Planner



Linda Fisher, AICP
Principal Planner



Michael Schoderbock, AICP
Program Planner



Joann Jacobs
Accounting Services
Coordinator



Carolyn Shoemaker
Administrative Secretary



Katherine Holt
Office Specialist

Year-End Financial Statement

The PPC operating budget, funded primarily by a countywide ad valorem tax, is prepared annually by the Executive Director and adopted by the Council, with the corresponding millage levy authorized by the Board

of County Commissioners. The FY 2013 millage rate was 0.0125. Copies of the proposed and adopted budget are forwarded to each local government. The Council's year-end financial statement is shown below.

	FY 2013	FY 2012
FUND BALANCE, BEGINNING OF FISCAL YEAR (OCTOBER 1)	\$656,025	\$760,951
REVENUES:		
Pinellas County Property Taxes	\$663,751	\$677,222
Contract Services	\$3,442	\$11,696
Net Investment Activity	\$1,392	\$2,493
Other	\$56,960	\$8,795
Total Revenues	\$725,545	\$700,206
EXPENDITURES:		
Payroll, Taxes, and Benefits	\$582,400	\$547,296
Contractual Support Services	\$74,615	\$79,872
Legal Services	\$1,576	—
Office Rent	\$98,645	\$100,906
Equipment and Furnishings	\$4,384	\$4,820
Telephone	\$2,909	\$2,860
Mail	\$2,077	\$1,723
Advertising Notice	\$17,484	\$20,505
Printing and Reproduction	\$7,895	\$8,090
Office Supplies and Materials	\$3,207	\$2,894
Property Appraiser and Tax Collector Commissions	\$19,176	\$18,779
Travel	\$2,691	\$425
Reference and Education	\$2,758	\$2,696
Accounting and Audit	\$12,063	\$12,200
Miscellaneous	\$20,133	\$2,066
Total Expenditures	\$834,364	\$805,132
REVENUES OVER (UNDER) EXPENDITURES	(\$108,819)	(\$104,926)
FUND BALANCE, END OF FISCAL YEAR (SEPTEMBER 30)	\$547,205	\$656,025

A Look Ahead to Fiscal Year 2014

As the previous pages demonstrate, the PPC has been actively engaged in countywide planning during the past year, and has accomplished a great deal. Looking ahead to next year, the PPC will continue to build upon the progress made during the past twelve months.

The annual (FY 2014) and five-year (FY 2014 through FY 2018) work programs identify tasks performed by the PPC on a routine basis, as well as special projects consistent with its mission statement and strategic plan. Some of the key tasks to be undertaken during the next year include:

- Completion of the required administrative and financial steps needed to implement unification of the PPC and MPO;
- Adoption of the new Countywide Plan, inclusive of the Countywide Plan Map and Countywide Rules, based on final input from the Joint Transportation/Land Use Working Group;

- Maintenance of the new Countywide Plan Map through the map amendment process and administration of the Countywide Rules;
- Assistance to local governments in maintaining consistency with the new Countywide Plan Map and Rules;
- Ongoing review and reporting of voluntary and referendum annexations; and
- Ongoing assistance to local governments.

2014 Schedule of Public Hearings and Meetings

PAC Meeting Date	PPC Hearing Date	CPA Hearing Date
December 30, 2013	January 8, 2014	February 11, 2014
February 3, 2014	February 12, 2014	March 18, 2014
March 3, 2014	March 12, 2014	April 1, 2014
March 31, 2014	April 9, 2014	May 6, 2014
May 5, 2014	May 14, 2014	June 3, 2014
June 2, 2014	June 11, 2014	July 15, 2014
June 30, 2014	July 9, 2014	August 5, 2014
August 4, 2014	August 13, 2014	September 11, 2014
September 2, 2014	September 10, 2014	October 7, 2014
September 29, 2014	October 8, 2014	November 18, 2014
November 3, 2014	November 12, 2014	December 2, 2014
December 1, 2014	December 10, 2014	January 2015 TBD

RECEIVED
BOARD OF

2014 MAR -6 PM 1:45

BOARD OF COUNTY
COMMISSIONERS
PINELLAS COUNTY FLORIDA



310 Court Street • Clearwater, Florida 33756
Telephone 727.464.8250 • Fax 727.464.8212 • www.pinellasplanningcouncil.org