

BOARD OF COUNTY COMMISSIONERS

DATE: October 8, 2013

AGENDA ITEM NO. 18

Consent Agenda



Regular Agenda



Public Hearing



County Administrator's Signature:

[Signature]
for RSV

Subject:

Countywide Plan Map - 2013 Annual Plan Map Adjustments- Official Acceptance

Department:

Strategic Planning and Initiatives

Staff Member Responsible:

Larry Arrington, Executive Director

Recommended Action:

IT IS RECOMMENDED THE BOARD OF COUNTY COMMISSIONERS (BOARD), SITTING AS THE COUNTYWIDE PLANNING AUTHORITY (CPA), OFFICIALLY ACCEPT THE PROPOSED COUNTYWIDE PLAN MAP BOUNDARY ADJUSTMENTS SUBMITTED BY PINELLAS COUNTY AND BY THE CITY OF CLEARWATER.

Summary Explanation/Background:

The Pinellas Planning Council (PPC or Council) reviewed submittals by Pinellas County and by the City of Clearwater that are consistent with the provisions of Sections 6.3.8.3, 6.3.8.5 and 6.3.8.6 of the Countywide Rules. These provisions allow for adjustments in the Water/Drainage Feature, Preservation, and Recreation/Open Space categories based on approved site plans and/or agency jurisdictional survey details and provide a procedure for local governments within Pinellas County to submit minor requests for Countywide Plan Map boundary adjustments.

The submittal by Pinellas County for a map adjustment includes an adjustment from Preservation with the Water/Drainage Feature Overlay to Residential Low for an approximately 1.0 acre vacant residential property located on the north side of Pennsylvania Avenue, to the east of Betmor Lane, in Palm Harbor. This adjustment will recognize the way that the property has been used in the past and will also coincide with the property's wetland buffer line based on the Southwest Florida Water Management District criteria.

The submittal by the City of Clearwater includes an adjustment from Water to Residential Suburban with the Water/Drainage Feature Overlay for an approximately 0.3 acre residential property located at 2995 Union Street. This adjustment recognizes that the property does not contain any wetlands but does, however, contain a pond that is less than 3.0 acres in size.

County staff concurs with the PPC recommendation to officially accept the two Countywide Plan Map adjustments.

Fiscal Impact/Cost/Revenue Summary:


N/A

Exhibits/Attachments Attached:

Council Documentation

TO: The Honorable Chairman and Members of the Board of County Commissioners, in Your Capacity as the Countywide Planning Authority

THROUGH: Robert S. LaSala, County Administrator

FROM: Michael C. Crawford, Interim Executive Director
Pinellas Planning Council 

SUBJECT: October 8, 2013 Countywide Planning Authority Agenda
Part IV – Regular Agenda Re: 2013 Annual Plan Map Adjustments – Official Acceptance

DATE: October 8, 2013

RECOMMENDATION: THE PINELLAS PLANNING COUNCIL RECOMMENDS THE BOARD, IN YOUR CAPACITY AS THE COUNTYWIDE PLANNING AUTHORITY, OFFICIALLY ACCEPT THE ACCOMPANYING PLAN MAP ADJUSTMENTS AS OUTLINED BELOW:

DISCUSSION: The Board, in your capacity as the Countywide Planning Authority, has received a recommendation from the Pinellas Planning Council to accept two (2) Countywide Future Land Use Plan Map adjustments.

The staff report includes two (2) plan map adjustments submitted consistent with the provisions of Section 6.3.8.6 of the Countywide Rules, which allow for adjustments in the Water/Drainage Feature, Preservation, and Recreation/Open Space Plan categories based on an approved site plan and/or agency jurisdictional survey details. The map adjustment process allows for these corrections of plan category boundaries without going through the full plan amendment process.

The two (2) map adjustments, submitted by the City of Clearwater, and by Pinellas County, are consistent with the Countywide Rules, were recommended for approval by the Pinellas Planning Council, and are being forwarded to the CPA for official acceptance. Upon approval by the CPA, these map adjustments will be reflected on the Countywide Future Land Use Plan Map. The location and description of these adjustments are set forth in the attached PPC agenda memorandum and accompanying maps.

The Planning Council reviewed the Plan Map adjustments and by a vote of 12-0 recommended that these Plan Map adjustments be officially accepted by the Countywide Planning Authority and depicted on the Countywide Plan Map.

Countywide Plan Map Adjustments
Official Acceptance

PINELLAS PLANNING COUNCIL AGENDA MEMORANDUM

AGENDA ITEM: IV B.

MEETING DATE: September 11, 2013

SUBJECT:

Countywide Plan Map Adjustments – Official Acceptance

RECOMMENDATION:

Council Recommend To The Countywide Planning Authority That The Proposed Countywide Plan Map Boundary Adjustments Be Officially Accepted.

I. BACKGROUND

The Rules Concerning the Administration of the Countywide Future Land Use Plan (Countywide Rules) include a procedure allowing local governments within Pinellas County to submit for Countywide Plan Map boundary adjustments that are minor in nature and include only the following categories: Water/Drainage Feature, Preservation, and Recreation/Open Space.

These categories are often generalized on the Countywide Plan Map and after site plan review at the local level, or other action such as completion of a wetland jurisdictional determination, a more specific area can be delineated. To qualify for this process, the Countywide Rules require submission of one of the following: a letter of determination with accompanying legal description; a wetland jurisdictional survey; or final site plan.

More specifically, as per subsection 6.3.8.6 of the Countywide Rules adjustments can be:

- Related to and consistent with a jurisdictional boundary determination under state agency rules; or
- Related to and consistent with an approved site plan or project plan for a body of water or drainage feature; or
- Related to and consistent with the purpose and characteristics of the particular plan category being adjusted and, absent a determination by the Interim Executive Director to the contrary, based upon a finding by the local government with jurisdiction or its designee that such adjustment is diminimus in extent and effect.

PINELLAS PLANNING COUNCIL ACTION:

The Council received/accepted/recommended transmittal to the Countywide Planning Authority for official acceptance (vote 12-0).

COUNTYWIDE PLANNING AUTHORITY ACTION:

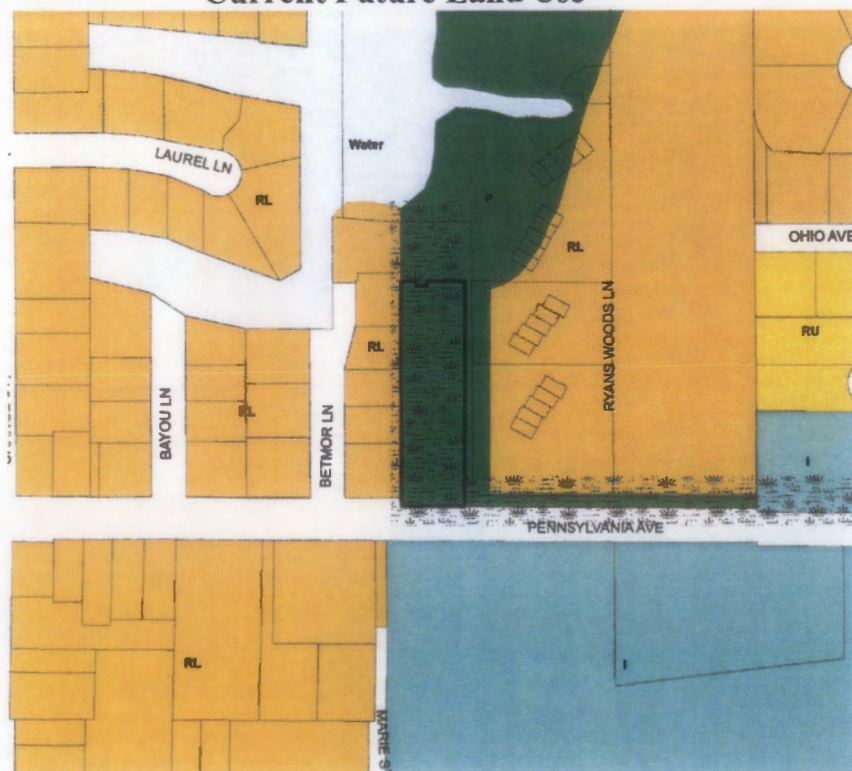
SUBJECT: Countywide Plan Map Adjustments – Official Acceptance

The following proposed adjustments to the Countywide Plan Map has been submitted to the Council for official acceptance consistent with the provisions of subsections 6.3.8.3, 6.3.8.5, and 6.3.8.6 of the Countywide Rules.

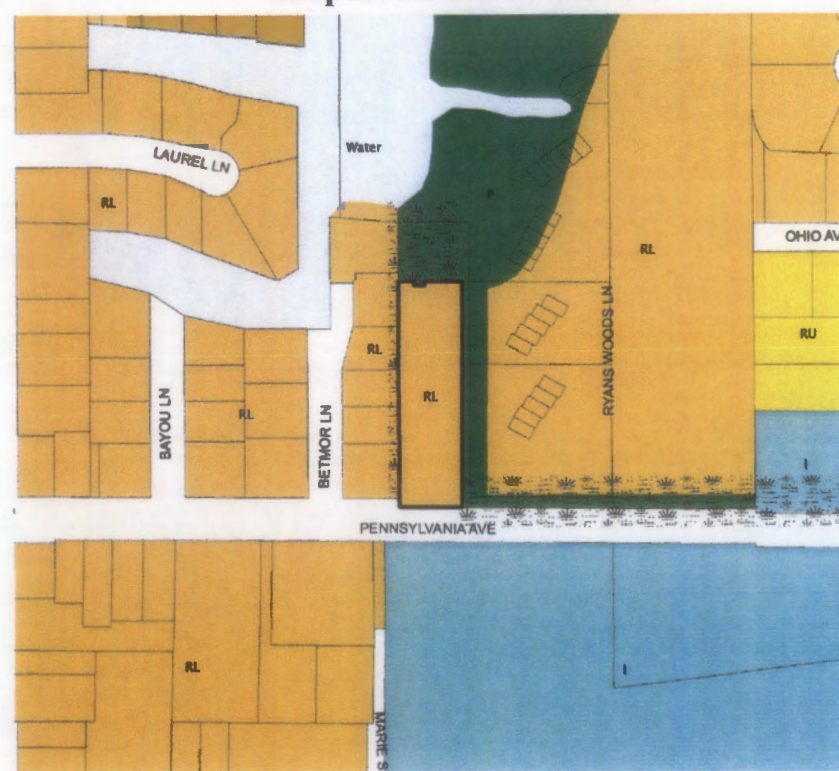
Pinellas County – Area 1

This area involves a portion of a vacant residential parcel. This will include approximately 1.0 acre and involve adjustment from Preservation with Water/Drainage Feature Overlay to Residential Low. This adjustment is based on a jurisdictional wetland survey and recognizes the historical land usage on the property. The area is located in Palm Harbor, on the north side of Pennsylvania Ave. just to the east of Betmor Ln.

Current Future Land Use



Proposed Future Land Use

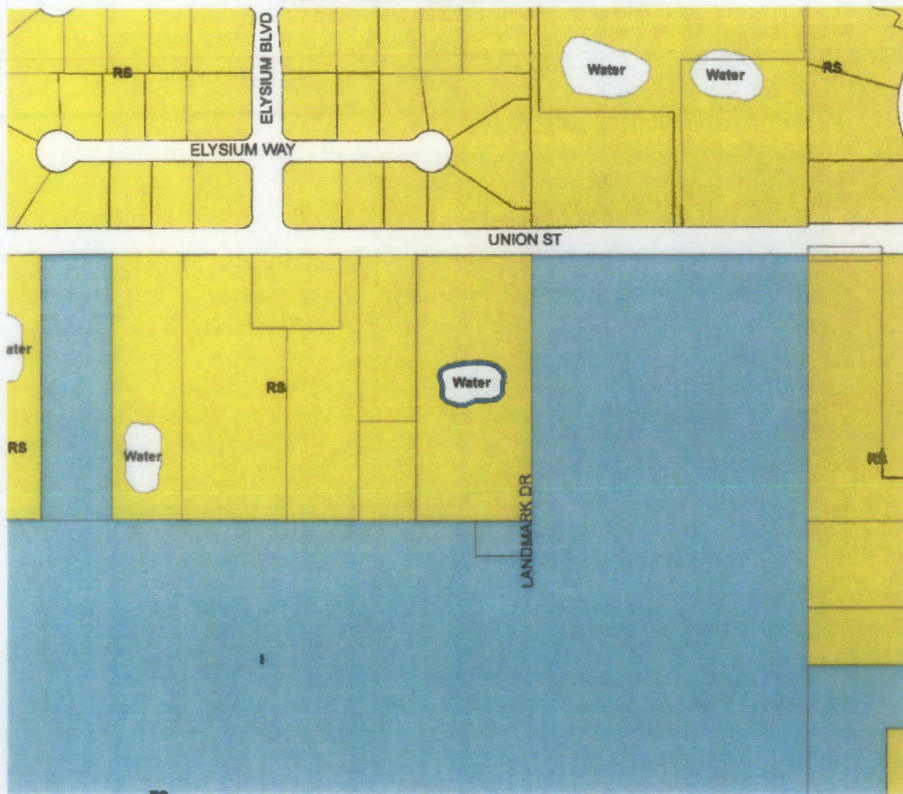


SUBJECT: Countywide Plan Map Adjustments – Official Acceptance

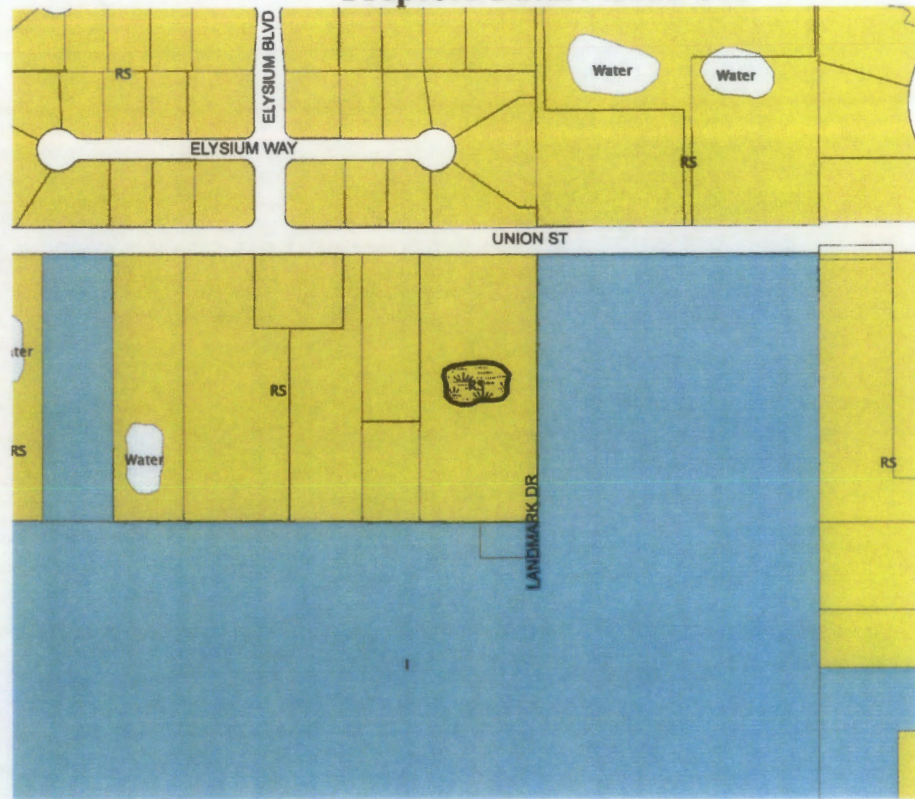
Clearwater – Area 1

This area involves a portion of a residential parcel. This will include approximately 0.3 acres and involve adjustment from Water to Residential Suburban with Water/Drainage Feature Overlay. This adjustment is based on a survey and recognizes that the pond on site is under three acres in size (Section 2.3.3.9.1 of the Countywide Rules) and not containing any wetlands. The area is located in Clearwater at 2995 Union St.

Current Future Land Use



Proposed Future Land Use



SUBJECT: Countywide Plan Map Adjustments – Official Acceptance

Planners Advisory Committee (PAC)

The PAC members discussed this item at their September 3, 2013 meeting and recommended approval (vote 10-0).

ATTACHMENTS:

Attachment 1 Draft PAC Summary Actions Sheet

F. <u>Countywide Plan Map Adjustments – Official Acceptance</u>	<u>Recommended Official Acceptance</u> Motion: Gordon Beardslee Second: Marie Dauphinais	10-0
G. <u>PPC/MPO Unification Update</u>	Mr. Crawford presented the update noting that the Reapportionment Plan was sent to the Governor this past week; that there is no deadline for the Governor's signature; and that 60 days after signature, the new Board must be seated. Mr. MacAulay of the MPO is preparing a letter to the six Inland Communities outlining the process they will be asked to follow with regard to the new Board appointment process. He noted there is also an interlocal agreement process that once the Governor gives his approval the FDOT will modify the existing interlocal agreement that created the MPO; and that because each local government in the County will all have a seat, all are now required to sign the Interlocal Agreement within that 60 day window. <u>No Action – Information Only</u>	
H. <u>Countywide Plan and Transportation Update – Greenlight Pinellas Coordination</u>	PAC discussed and provided input noting that the Transportation and Land Use Working Group will meet and discuss further on Friday September 6. <u>Recommended approval of concept of brochure subject to further refining as suggested during the meeting.</u> Motion: Renea Vincent Second: Bob Klute	10-0